

WAUPACA COUNTY TORNADO GUIDE (1950-2024)

Updated: 1/1/25

Event #	Date			Time (CST)	Start / End Location	F/EF Rank	Width (Yards)	Path (Miles)
1	9	18	1950	14:30	2 N Waupaca - Weyauwega	3	N/A	N/A
2	9	26	1951	15:45-16:08	9 SSW Amherst - 2 SW Bear Creek	4	100	22.3
3	5	28	1955	15:05	3 W Clintonville	1	75	2.7
4	4	6	1956	13:45	Ogdensburg - Symco	2	100	7.0
5	5	6	1959	03:20	Symco - Clintonville	2	1,000	7.2
6	5	8	1964	17:00	Iola - 1 W Clintonville	2	200	3.0
7	7	2	1969	16:00	Symco	0	100	4.3
8	7	14	1970	12:30	Marion	1	35	0.5
9	12	1	1970	10:30	4 NW Iola - Pella	2	200	32.0
10	6	14	1980	12:30	5 NW Manawa - Manawa	1	50	5.0
11	4	27	1984	14:55-15:40	Union - Legend Lake	3	440	32.0
12	5	16	1992	18:30	2.5 NE Northland	1	100	1.5
13	7	4	1994	16:49	4 W Fremont	0	25	0.1
14	6	23	2004	18:56-19:06	9 W Waupaca - 2 SW Lind Center	2	125	11.0
15	6	10	2005	15:10	2 W Clintonville	0	20	0.1
16	8	18	2005	18:38-18:41	4 SSW - 3.4 SW New London	0	40	1.2
17	4	10	2011	18:06-18:43	1 SW Saxeville - 1 SE Hortonville	1	200	27.6
18	8	6	2013	23:22-23:33	4 NNE Partridge - 0.8 WSW Hortonville	1	125	9.8
19	8	6	2013	23:24-23:33	1.2 W New London - 0.4 WSW Greenville	2	175	13.1
20	5	17	2015	14:31-14:40	3.4 W Marion - 2.7 W Marion	1	75	0.8
21	6	26	2016	01:30-01:35	4.2 ESE Symco - 6.4 NNE Northport	1	100	2.7
22	7	20	2019	09:55-10:03	1.4 SSE Waupaca - 2.1 ESE White Lake	1	80	7.6
23	7	20	2019	10:00-10:02	0.6 SSW Weyauwega - 1.1 E Weyauwega	0	50	1.4
24	7	20	2019	10:09-10:20	1.8 SSW New London - 2.9 SW Shiocton	0	75	1.3
25	6	15	2022	16:52-16:56	1 W Manawa - 2 SSE Symco	1	120	3.1

TORNADO REFERENCE GUIDE – WAUPACA COUNTY

Event 1: September 18, 1950

The F3 tornado touched down 2 miles north of Waupaca around 2:30 PM CST. The tornado traveled to Weyauwega before dissipating. Storm data was not available at this time and I could not find any additional newspaper articles on this tornado event.

Event 2: September 26, 1951

The F4 tornado touched down 9 miles south southwest of Amherst in Portage County around 3:45 PM CST. The tornado then cut through the towns of Waupaca and Lebanon in Waupaca County. The tornado traveled 22.3 miles and reached a maximum width of 400 yards before dissipating 2 miles southwest of Bear Creek in Waupaca County around 4:08 PM CST. A family of five was killed near Waupaca; while a 40 year old woman was killed near New London when a farm home was flattened.

Event 3: May 28, 1955

The F1 tornado touched down 3 miles west of Clintonville around 3:05 PM CST. The tornado traveled 2.7 miles and reached a maximum width of 75 yards before dissipating. The tornado ripped through a farm injuring two persons and knocking down trees and utility poles. Robert Malaueg, 13, and Leroy Ashauer, 23, were hurt and taken to Clintonville Community Hospital.

Event 4: April 6, 1956

The F2 tornado developed near Ogdensburg around 1:45 PM CST. The tornado traveled 7 miles to Symco before dissipating around 1:53 PM CST. The tornado reached a maximum width of 100 yards.

Event 5: May 6, 1959

The F2 tornado developed near Symco and traveled a little over 7 miles to three miles southeast of Clintonville in Outagamie County around 3:20 AM CST. A second tornado hit Outagamie County later that afternoon.

Event 6: May 8, 1964

Several tornadoes were noted across the state on this date. In north central and northeast Wisconsin, the F2 tornado touched down from about five miles north of Iola around 5 PM CST. The tornado traveled a little over 3 miles to one mile west of Clintonville. The tornado had a maximum width of 200 yards. At least five barns were reported down in the Clintonville area. Another tornado was noted across Marathon County from seven miles east southeast of Knowlton to five miles west of Elderon around 5:50 PM CST.

Event 7: July 2, 1969

The F0 tornado touched down in Symco around 4 PM CST. The tornado was 100 yards wide and traveled 4.3 miles before dissipating. The tornado produced extensive damage to buildings on the Howard Winter farm between Manawa and Big Falls. Utility wires were also damaged along Highway 22 near Symco.

Event 8: July 14, 1970

The F1 tornado briefly touched down in Marion around 12:30 PM CST. The tornado was less than 50 yards wide and traveled approximately a half mile. The tornado ripped a door off a factory, flipping over a car and damaging trucks and signs in Marion.

Event 9: December 1, 1970

Four rare and only December tornadoes were reported on this date across north central and northeast Wisconsin. The F2 tornado touched down with severe damage around 9:45 AM CST on the Heschke farm 4 miles northwest of Iola. The tornado moved east for over 30 miles across Waupaca County into Shawano County before dissipating in Pella around 10:30 AM CST. The maximum width of the tornado was 200 yards. Additional damage occurred in the Marion and Pella areas. A lady and her three small children escaped injury when their mobile home was lifted by the tornado and exploded with debris scattered over the field.

TORNADO REFERENCE GUIDE – WAUPACA COUNTY

Event 10: June 14, 1980

The F1 tornado developed about 5 miles northwest of Manawa at Highway 161 near County Highway E around 12:30 PM CST. The tornado crossed Highway 161 and then turned eastward and dissipated near Manawa. The tornado was 50 yards wide and traveled five miles before dissipating. Several residents in the area took several spectacular photographs of the twister.

Event 11: April 27, 1984

The F3 tornado touched down on April 27th in Union township around 2:55 PM CST. The tornado skipped north northeast to Legend Lake in Menominee County where the tornado dissipated around 3:40 PM CST. The tornado traveled 32 miles and reached a maximum width of 440 yards. Damage occurred to 41 homes and cabins, 5 barns, 19 garages and sheds as well as several hundred acres of forest. The hardest hit areas were around Marion in Waupaca County, the town of Pella in Shawano County, and the South Branch-Legend Lake areas of Menominee County. Overall, there were six tornadoes on this date across north central and northeast Wisconsin. The strongest tornado (F4) occurred across Winnebago and Outagamie Counties around the same time these two tornadoes occurred. Across the state of Wisconsin, there were ten tornadoes reported on this date.

Event 12: May 16, 1992

In Waupaca County, the F1 tornado touched down two and a half miles northeast of Northland around 6:30 PM CST. The tornado was 100 yards wide and was on the ground for a mile and a half. Many trees and three homes were damaged by the tornado.

Event 13: July 4, 1994

The F0 tornado touched down 4 miles west of Fremont around 4:49 PM CST. The tornado was 25 yards wide and was on the ground for a tenth of a mile. The tornado did not produce any significant damage.

Event 14: June 23, 2004

The F2 tornado originally touched down in southeast Portage County. The tornado then strengthened as it moved into southwest Waupaca County 9 miles west of Waupaca around 6:56 PM CST. The tornado was 125 yards wide and traveled 11 miles before dissipating 2 miles southwest of Lind Center at 7:06 PM CST. The tornado scoured asphalt off a road, destroyed a barn, sheared off the top 50 feet of a silo crushing 3 calves, damaged a sheet metal outbuilding, and killed 3 sheep. The tornado tore the roof from a house and destroyed the garage, overturned a semi-trailer and moved it 50 feet. Many trees were snapped off or uprooted. Some of the debris from this tornado landed several miles to the east in the Fremont area of Waupaca County.

Event 15: June 10, 2005

The F0 tornado touched down 2 miles west of Clintonville at 3:10 PM CST. The tornado was 20 yards wide and was on the ground a tenth of a mile.

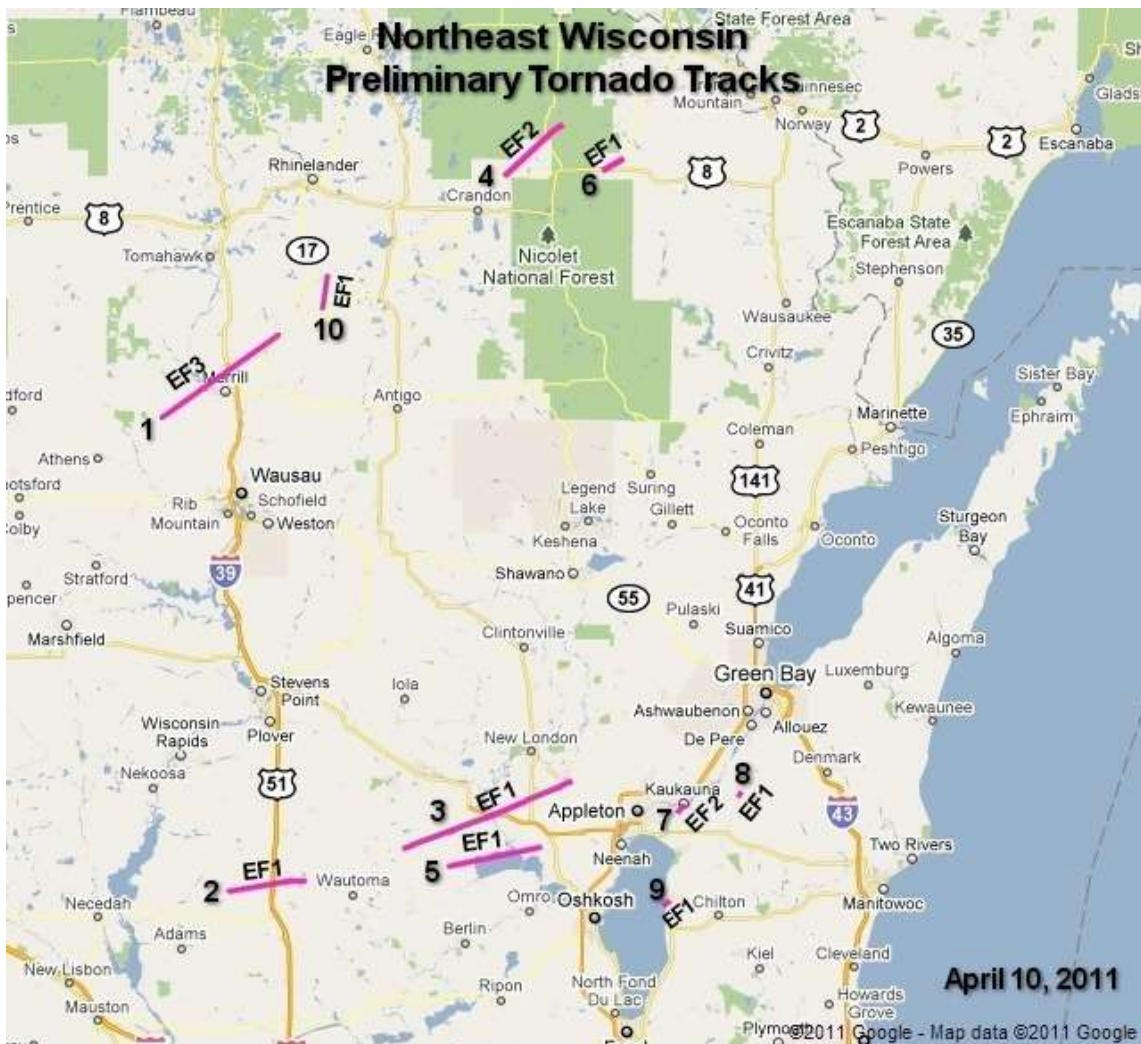
Event 16: August 18, 2005

The F0 tornado touched down 4 miles south southwest of New London at 6:38 PM CST. The tornado was 40 yards wide and was on the ground for 1.2 miles before dissipating 3.4 miles southwest of New London at 6:41 PM CST. The tornado snapped large trees and a few buildings in its path. The tornado shifted a large barn, destroyed a small metal shed and threw it about a quarter of a mile. An outbuilding was overturned and thrown 30 to 40 feet into a stand of trees.

TORNADO REFERENCE GUIDE – WAUPACA COUNTY

Event 17: April 10, 2011

The EF1 tornado developed at approximately 6:06 PM CST one mile southwest of Saxeville in Waushara County and moved east-northeast across east-central Wisconsin. Numerous pine trees were snapped or uprooted near the initial point of contact. As the tornado moved into West Bloomfield, several farm buildings were heavily damaged, including a barn that collapsed. The tornado had an average width of 100 yards, but it was not on the ground continuously. The tornado entered Waupaca County at 6:20 PM CST southwest of Fremont. Several farm buildings were impacted by the tornado in addition to many trees. Near Readfield, a barn was lifted and rolled off its foundation. A poorly anchored house roof, which overhung the house walls was completely removed with the debris strewn nearly a quarter of a mile to the northeast. The average width of the tornado was 100 yards. The tornado moved into Outagamie County at 6:32 PM CST. The tornado, which was not on the ground the entire time, damaged a couple of farm buildings just south of Hortonville before it dissipated. One of the buildings lost part of its roof. The average width was 100 yards.



TORNADO REFERENCE GUIDE – WAUPACA COUNTY

Rare Late Evening / Early Morning Tornadoes on August 6-7, 2013



Event 18: August 6, 2013

The first of six late night tornadoes to strike Northeast Wisconsin on this date, The EF0 tornado touched down four miles north northeast of Partridge Lake in Waupaca County at 11:22 PM CST. The tornado was traveling at a rate of 60 to 70 mph. The tornado hit a campground, blowing several camper trailers over. Two people sustained minor injuries at the campground. Over one hundred trees were snapped or uprooted along the path in Waupaca County. The tornado moved into Outagamie County about 3.1 miles south of New London at 11:26 PM CST. The tornado damaged or uprooted trees as it moved across Outagamie County. Based on radar analysis, the circulation of this tornado may have merged with the other tornado that was occurring concurrently in the county near Hortonville. The tornado traveled 9.8 miles before dissipating eight tenths of a mile west southwest of Hortonville at 11:30 PM CST. The maximum width of the tornado in Outagamie and Waupaca Counties was 125 yards, with an average width of 75 yards in both counties.

Event 19: August 6, 2013

The second of six late night tornadoes to strike Northeast Wisconsin on this date, the EF2 tornado touched down 1.2 miles west of New London in Waupaca County at 11:24 PM CST. The tornado was traveling at a rate of 60 to 70 mph. The tornado struck a church (figure 1 next page), causing severe damage. A large portion of the roof collapsed, causing failure to two walls. A wall on the new portion of the church was pushed in. In addition, hundreds of trees were snapped or uprooted. Several homes along the path sustained damage, mainly from fallen trees. The average path width in Waupaca County was 100 yards with a maximum width of 175 yards. The tornado now an EF1 entered Outagamie County at 11:25 PM CST a little over a mile southeast of New London, damaging or uprooting hundreds of trees along the path. Several homes in a two-block area of Hortonville were damaged (roof and siding) by falling trees. The average path width was 100 yards with a maximum width of 175 yards in Outagamie County. The tornado traveled 13.1 miles before dissipating four tenths of a mile west southwest of Greenville.

TORNADO REFERENCE GUIDE – WAUPACA COUNTY

Event 20: July 6, 2015

The EF0 tornado touched down at 2:31 PM CST 3.4 miles west of Marion (see map below) in Waupaca County. The tornado traveled three quarters of a mile and had a maximum width of 75 yards wide before dissipating 2.7 miles west of Marion at 2:40 PM CST. The tornado heavily damaged a barn and adjacent garage. The roof of a nearby house was damaged and winds of another home were broken. At least two dozen trees were uprooted or snapped. The average path width was 50 yards.

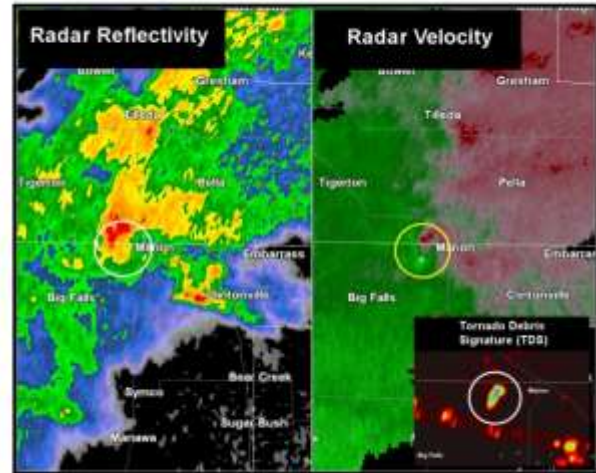
This was one of three tornadoes that touched down in northeast Wisconsin on this date. What was unusual about this event was there was no thunder noted with the tornadoes (very rare!). The radar image shows in the intense rotation west of Marion.



Preliminary Tornado Map (above). Red triangles denote approximate location of brief tornado touchdowns. Inset above denotes the location of the EF1 tornado west of Marion, Wisconsin.

Tornado	Begin	End	Path
Marion EF1	4:30 PM, 3 W Marion	4:40 PM, 2 E W Marion	Length: 0.4 mi Width: 75 yards
Pella EF0	5:03 PM, 2 E Pella	5:03 PM, 2 E Pella	Length: 0.1 mi Width: 25 yards
Gilbert EF1	5:50 PM, 2 E Gilbert	6:03 PM, 3 ENE Gilbert	Length: 2.2 mi Width: 50 yards

The first tornado developed just ahead of the main line of showers over northern Waupaca County. This storm quickly attained supercell characteristics and generated a brief EF1 tornado about three miles west of Marion in extreme northern Waupaca County (see map inset above and radar images below).



Radar reflectivity (above left) and radar velocity (above right) around time of the EF1 tornado west of Marion. Inset in the above image is the dual polarization correlation coefficient (CC) product denoting the location of debris produced by the tornado.

TORNADO REFERENCE GUIDE – WAUPACA COUNTY

Event 20: July 6, 2015 continued

Here are some damage photos from the Marion tornado:



Event 21: June 26, 2016

The EF1 tornado touched down 4.2 east southeast of Symco in Waupaca County around 1:30 AM CST. The tornado was 100 yards wide and traveled just over two and a half miles before dissipating 6.4 miles north northeast of Northport around 1:35 AM CST. At least half dozen trees were snapped along the path and several trees were uprooted. Several farm buildings were heavy damaged, with metal from the buildings strewn downwind hundreds of yards. A manufactured home was pushed off its block foundation.

TORNADO REFERENCE GUIDE – WAUPACA COUNTY

Event 22: July 20, 2019



Tornado Tracks

The EF1 tornado touched down near one and a half miles south-southeast of Waupaca in Waupaca County around 9:55 AM CST. The tornado formed south of Waupaca and moved east-northeast to near White Lake. The tornado damaged siding and shingles on six homes and an apartment in a new subdivision near the Waupaca Airport. The garage door of a newer home was blown completely in, causing damage to the roof of the house. Another house had a small part of its roof heavily damaged. Numerous trees were also damaged along the path. Peak winds were estimated around 90 mph. The tornado was 80 yards wide and traveled about seven and a half miles before dissipating at 10:03 AM CST two miles east-southeast of White Lake.

Event 23: July 20, 2019

The EF0 tornado touched down just over a half mile south-southwest of Weyauwega in Waupaca County around 10 AM CST, damaging several trees on the south side of Weyauwega. Peak winds were estimated at 75 mph. The tornado was 50 yards wide and traveled just short of a mile and a half before dissipating around 10:02 AM CST one mile east of Weyauwega.

Event 24: July 20, 2019

The EF0 tornado touched down nearly two miles south-southwest of New London in Waupaca County at 10:09 AM CST. The tornado damaged a few trees before entering Outagamie County at 11:10 AM CST about 1.4 miles south of New London. In Outagamie County, the tornado continued northeast and destroyed a storage shed, heavily damaged trees and ripped shingles and siding off a house. A power pole also fell onto a car. Peak winds were estimated around 90 mph. The maximum width of the tornado was 90 yards and traveled seven and a half miles before dissipating around 10:20 AM CST nearly three miles southwest of Shiocton.

Event 25: June 15, 2022

The EF1 tornado formed at 4:52 PM CST near Manawa in central Waupaca County. The tornado continued northeast before dissipating at 4:56 PM CST near Symco. The total path length was estimated to be 3.1 miles long with a maximum width of 120 yards. The peak wind was estimated to be around 90 mph.