

WAUSHARA COUNTY TORNADO GUIDE (1950-2024)

Updated: 1/1/25

Event #	Date			Time (CST)	Start / End Location	F/EF Rank	Width (Yards)	Path (Miles)
	Month	Day	Year					
1	4	15	1954	15:00	2 NE Neshkoro - Redgranite	2	30	6.0
2	4	3	1956	13:45-13:53	Berlin - Rural Winnebago County	4	440	11.5
3	4	19	1957	16:00-16:15	3 W Wautoma - 2 NW West Bloomfield	2	50	22.8
4	7	10	1966	22:00	Plainfield - Wautoma	1	100	15.5
5	5	18	1971	16:40-17:04	Adams - Friendship - Hancock	1	100	15.0
6	7	4	1985	17:03-17:17	1 N Redgranite - 1 SW Pine River	0	50	5.0
7	8	12	1985	19:30-19:45	1 N Richford	0	100	0.5
8	5	8	1988	17:06-17:12	2 SE Wautoma - 1 S Mount Morris	1	100	5.0
9	9	19	1988	16:05	1 E Plainfield	0	25	0.1
10	8	29	1992	19:10-19:55	1 N Wautoma - 3 SE Poy Sippi	3	800	28.0
11	10	8	1992	16:48	5 NE Wild Rose	1	400	1.0
12	6	8	1993	18:38-18:55	2.5 S Spring Lake - 2 W Auroraville	0	25	8.0
13	6	8	1993	19:15-19:35	0.5 E Dakota - 2 S Redgranite	0	35	12.0
14	6	8	1993	19:35-19:45	5 SE Redgranite - 3 SE Auroraville	0	25	6.0
15	8	27	1994	21:07	Hancock	1	75	1.5
16	7	16	1997	16:41-16:42	Hancock	0	10	0.1
17	6	16	1998	15:00	3 WNW Coloma	0	20	0.1
18	6	4	2005	13:54	1 E - 1.1 ENE Auroraville	0	75	0.2
19	6	4	2005	14:05	2 NW Borth	0	50	0.1
20	8	18	2005	17:32-17:36	6 WSW - 3.7 SW Wautoma	0	80	2.0
21	4	10	2011	17:35-17:42	2 NW Coloma - 4 ESE Hancock	1	140	7.9
22	4	10	2011	18:06-18:43	1 SW Saxeville - 1 SE Hortonville	1	200	27.6
23	4	10	2011	18:53-19:04	0.3 N Poy Sippi - 2.3 WSW Winchester	1	150	14.9
24	6	14	2017	13:49-13:52	2.4 ENE Wild Rose - 3.2 NW Saxeville	1	100	2.8
25	7	20	2018	11:55-11:56	1.4 NW Silver Lake	0	10	0.1
26	7	16	2019	16:35-16:36	3.2 NNE Hancock - 3.1 NNE Hancock	0	10	0.2
27	7	28	2021	22:06-22:08	1.9 W - 1.8 WSW Borth	0	33	0.5
28	8	8	2021	14:52-14:58	3.7 SSW - 1.1 W Coloma	1	350	3.5
29	6	15	2022	16:41-16:47	1.4 WNW Brushville - 1.4 NE West Bloomfield	1	100	4.8

TORNADO REFERENCE GUIDE - WAUSHARA COUNTY

Event 1: April 15, 1954

The F2 tornado struck around 3 PM CST two miles northeast of Neshkoro in Waushara County. The tornado traveled approximately six miles and reached a maximum width of 30 yards before dissipating at Redgranite. Widespread damage was reported at Redgranite, Lohrville and Spring Lake. Numerous small buildings and trees were damaged. The greatest single property damage occurred at the St. Marks Catholic Church in Redgranite. The frame structure was badly shaken by the storm, resulting in jammed doors and dislodged staircases and shattered walls. In the Spring Lake-Lohrville area, the greatest damage was in the town of Marion where a large barn was leveled. The wind scattered the tin roof for hundreds of yards in several directions.

Event 2: April 3, 1956

Unseasonably warm air ahead of a strong cold front triggered showers and thunderstorms across the state. The F4 tornado developed near Berlin in Green Lake County around 1:45 PM CST and traveled 11.5 miles across rural areas of southeast Waushara County near the town of Aurora; then dissipated around 1:53 PM CST two miles west of Omro in Winnebago County. The tornado was 440 yards wide. Berlin was hit the hardest with six killed and 50 injured. Severe storms killed eight people across the state on this day.

Event 3: April 19, 1957

The F2 tornado developed 3 miles west of Wautoma in Waushara County around 4 PM CST. The tornado traveled nearly 23 miles and reached a maximum width of 50 yards before dissipating two miles northwest of West Bloomfield around 4:15 PM CST. No fatalities were reported at a farmhouse that was leveled in rural Wild Rose. The farm of Reuben Anderson, Route 2 Wild Rose was the principal destruction point in Waushara County. The tornado destroyed a 34 by 56 feet barn, a 10 by 30 feet wood silo, a chicken coop, a milk house and woodshed.

Event 4: July 10, 1966

The F1 tornado was first reported to touch down in Plainfield in Waushara County around 10 PM CST. The tornado was 100 yards wide and traveled approximately fifteen and a half miles before dissipating at Wautoma.

Event 5: May 18, 1971

The F1 tornado was first sighted northeast of Adams and Friendship in Adams County around 4:40 PM CST. The tornado traveled 15 miles as it moved across Highway 21 and then to Hancock in western Waushara County before dissipating around 5:04 PM CST. The tornado reached a maximum width of 100 yards. After crossing Highway 21, the tornado destroyed two house trailers injuring five people and smashed a barn. In Hancock, a large metal warehouse was severely damaged with sheet metal scattered a half mile downwind.

Event 6: July 4, 1985:

The F0 tornado touched down one mile north of Redgranite in Waushara County around 5:03 PM CST. The tornado was 50 yards wide and skipped along for 5 miles before dissipating one mile southwest of Pine River around 5:17 PM CST. The tornado damaged a house one mile southwest of Pine River. The storm also produced hail up to three and a half inches in the Richford and Hancock areas. The large hail dented 47 new cars at a dealership in Coloma.

Event 7: August 12, 1985

The F0 tornado touched down one mile north of Richford in Waushara County around 7:30 PM CST. The tornado was 100 yards wide and traveled a half mile before dissipating. The tornado flattened 2 barns, damaged 5 homes and leveled many trees. Several sheds in Richford were destroyed and extensive window and roof damaged occurred.

Event 8: May 8, 1988

In Waushara County, the F1 tornado traveled 5 miles from one mile south of Mount Morris to 3 miles northeast of Wild Rose between 5:06 and 5:12 PM CST. The tornado was 100 yards wide. Damage to structures and trees were reported along Silver Lake.

TORNADO REFERENCE GUIDE - WAUSHARA COUNTY

Event 9: September 19, 1988

The brief F0 tornado developed one mile east of Plainfield in Waushara County at 4:05 PM CST. The tornado was 25 yards wide and only traveled a tenth of a mile. Little damage noted in the monthly storm report.

Event 10: August 29, 1992

The F3 tornado touched down east of Big Flats in Adams County around 7 PM CST. The tornado skipped along a five miles path, toppling trees, and downing a 24 by 30 feet building. The killer tornado traveled a 28 miles path across Adams and Waushara Counties. The tornado was noted north of Coloma 7:10 PM just CST. The tornado then moved to Wautoma to just north of Redgranite and then to three miles southeast of Poy Sippi before dissipating around 7:55 PM CST. The hardest hit area was just south of Wautoma where a woman was killed when her mobile home was hurled several hundred feet into a parking lot. In addition, 30 people were injured, several critically. The tornado caused over ten million dollars in damage. Forty-eight homes were destroyed, and ninety-five other structures sustained major damage, 289 received minor damage. 950 acres of trees were toppled by the tornadic winds.

Event 11: October 8, 1992

The F1 tornado touched down in the Gilbert Lakes area about 5 miles northeast of Wild Rose in Waushara County around 4:48 PM CST. The tornado was 400 yards wide and was on the ground for a mile. Fifteen homes and buildings were damaged. 500 oak and pine trees were also damaged.

Event 12: June 8, 1993

Three weak tornadoes touched down across Waushara County during the evening. The F0 tornado developed two and a half miles south of Spring Lake around 6:38 PM CST. The tornado was 25 yards wide and traveled 8 miles before dissipating around 6:55 PM CST two miles west of Auroraville. Only minor damage was noted.

Event 13: June 8, 1993

Three weak tornadoes touched down across Waushara County during the evening. The F0 tornado developed a half mile east of Dakota around 7:15 PM CST. The tornado was 35 yards wide and traveled 12 miles before dissipating around 7:35 PM CST two miles south of Redgranite. Only minor damage was noted.

Event 14: June 8, 1993

Three weak tornadoes touched down across Waushara County during the evening. The F0 tornado touched down 5 miles southeast of Redgranite around 7:35 PM CST. The tornado was 25 yards wide and traveled 6 miles before dissipating at 7:45 PM three miles southeast of Auroraville. Only minor damage was noted.

Event 15: August 27, 1994

The F1 tornado formed in Hancock in Waushara County around 9:07 PM CST. The tornado was 75 yards wide and was on the ground for a mile and a half.

Event 16: July 16, 1997

The F0 tornado touched down in Hancock in Waushara County at 4:41 PM CST. The tornado was 10 yards wide and traveled a tenth of a mile before dissipating at 4:42 PM CST. The tornado touched down in an open field in Hancock.

Event 17: June 16, 1998

The F0 was designated a landspout in the monthly storm report. The tornado touched down 3 miles west northwest of Coloma in Waushara County at 3 PM CST. The tornado was 20 yards wide and was on the ground for a tenth of a mile. No damage was reported.

TORNADO REFERENCE GUIDE - WAUSHARA COUNTY

Event 18: June 4, 2005

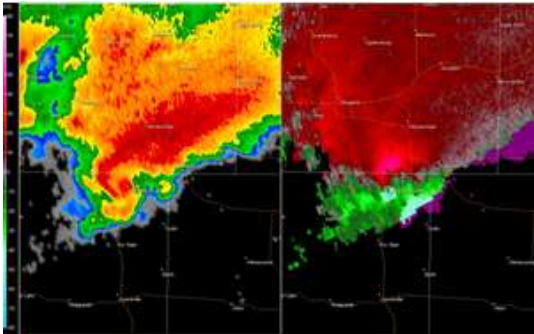
The F0 touched down one mile east of Auroraville in Waushara County at 1:54 PM CST. The tornado was 75 yards wide and was on the ground for two tenths of a mile. No significant damage was noted from this tornado.

Event 19: June 4, 2005

The F0 touched down 2 miles northwest of Borth in Waushara County at 2:05 PM CST. The tornado was 50 yards wide and was on the ground for a tenth of a mile. No significant damage was noted from this tornado.

Event 20: August 18, 2005

The F0 tornado touched down 6 miles west southwest of Wautoma in Waushara County at 5:32 PM CST. The tornado was 80 yards wide and was on the ground for two miles before dissipating 3.7 miles south of Wautoma at 5:36 PM CST. The tornado snapped off or uprooted many trees and caused damage to a few buildings and some farm equipment. A tree fell onto a large pole building, causing major damage to one of its sides. A porch at a residence was destroyed by a fallen tree limb while a portion of the metal roof of a barn was torn from it and thrown about 200 feet. An irrigation system was also damaged.



Event 21: April 10, 2011

The EF1 tornado moved out of Adams County and entered Waushara County at 5:35 PM CST about 1.8 miles northwest of Coloma. The worst damage occurred just inside the Waushara County line. A mobile home roof was torn off and roof damage was noted to several homes. The average width of the tornado was about 80 yards. The tornado dissipated 2.3 miles west southwest of Winchester around 5:42 PM CST.

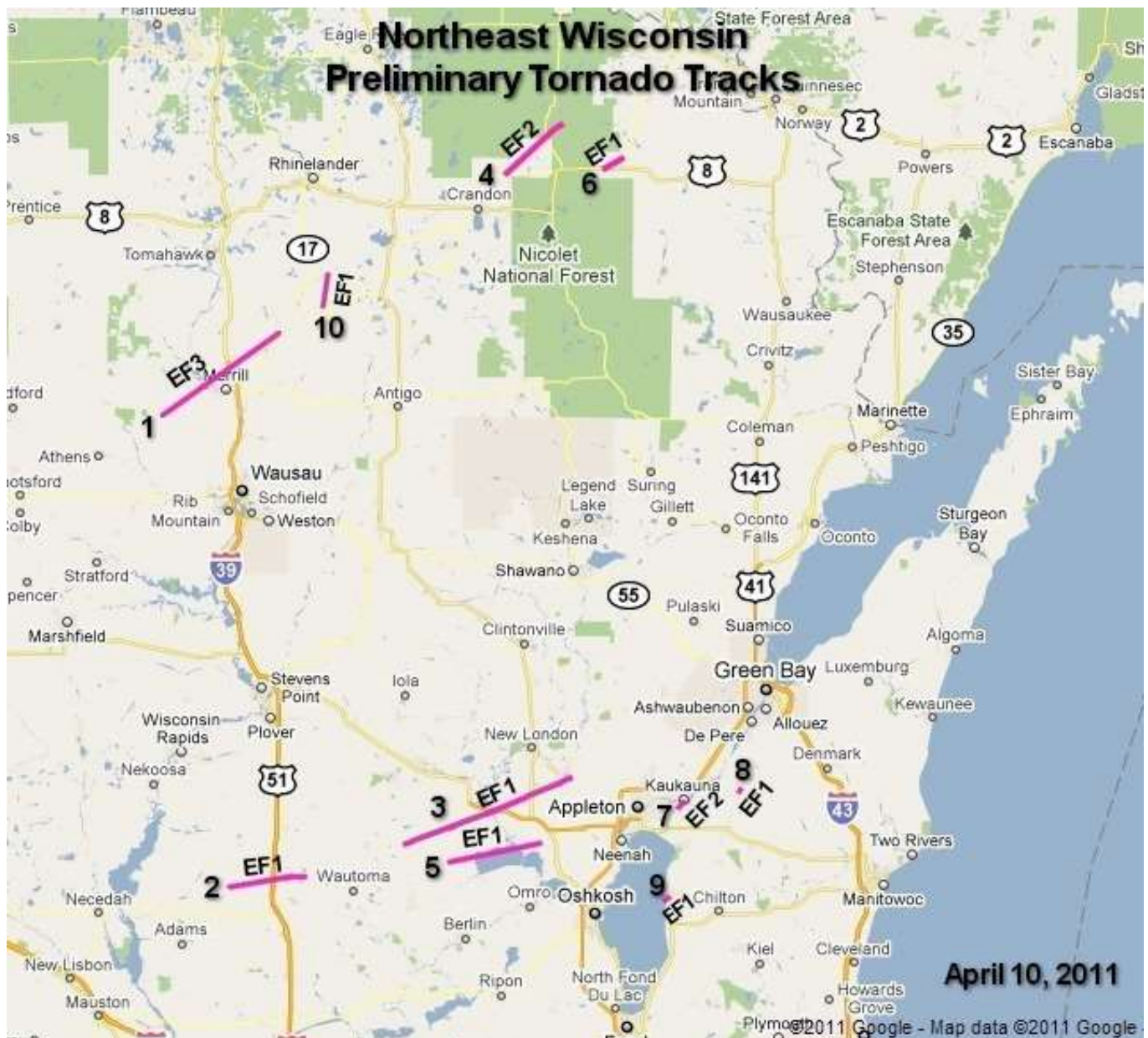
Event 22: April 10, 2011

The EF1 tornado developed at approximately 6:06 PM CST one mile southwest of Saxeville in Waushara County and moved east-northeast across east-central Wisconsin. Numerous pine trees were snapped or uprooted near the initial point of contact. As the tornado moved into West Bloomfield, several farm buildings were heavily damaged, including a barn that collapsed. The tornado had an average width of 100 yards, but it was not on the ground continuously. The tornado entered Waupaca County at 6:20 PM CST southwest of Fremont. Several farm buildings were impacted by the tornado in addition to many trees. Near Readfield, a barn was lifted and rolled off its foundation. A poorly anchored house roof, which overhung the house walls was completely removed with the debris strewn nearly a quarter of a mile to the northeast. The average width of the tornado was 100 yards. The tornado moved into Outagamie County at 6:32 PM CST. The tornado, which was not on the ground the entire time, damaged a couple of farm buildings just south of Hortonville before it dissipated. One of the buildings lost part of its roof. The average width was 100 yards.

TORNADO REFERENCE GUIDE - WAUSHARA COUNTY

Event 23: April 10, 2011

The EF1 tornado developed 0.3 miles northwest of Poy Sippi around 6:53 PM CST, then moved east-northeast over the north shore of Lake Poygan. The tornado then entered Winnebago County at 7:04 PM CST. In Waushara County, the tornado damaged a house and destroyed a barn in the Poy Sippi area. Another barn was flattened near the north shore of Lake Poygan. Many pine trees were uprooted or snapped along the path of the storm. The average path width in Waushara County was 100 yards. In Winnebago County, the tornado moved along the north shore of Lake Poygan, causing most of the damage near Boom Bay on the northeast shore of Lake Poygan. Two homes were heavily damaged as portions of their roofs were partially ripped off. Several other houses sustained lesser damage in this area. In addition, two small mobile homes were rolled on their side and many trees were uprooted or snapped. The tornado dissipated about 2 miles west of Winchester, although damage occurred east and southeast of this location from straight-line thunderstorm winds. The average path width in Winnebago County was 100 yards.



TORNADO REFERENCE GUIDE - WAUSHARA COUNTY

Event 24: June 14, 2017

The EF1 tornado touched down over two miles east-northeast of Wild Rose in Waushara County around 1:49 PM CST. As the tornado moved northeast, it uprooted or snapped 100 pines trees while several houses sustained significant roof damage from fallen trees. The tornado was 100 yards wide and traveled nearly three miles before dissipating just over three miles northwest of Saxeville.

Event 25: July 20, 2018

The EF0 tornado touched down around 11:55 AM CST nearly a mile and a half northwest of Silver Lake, or near Highway 21 about mile southeast of Wautoma in Waushara County. Several witnesses observed the tornado on the ground for 10 to 15 seconds. A few white pine branches were broken. The tornado was 10 yards wide and traveled a tenth of a mile before dissipating at 11:56 AM CST.

Event 26: July 16, 2019

The brief but weak EF0 tornado touched down in an open field between Plainfield and Hancock in Waushara County around 4:35 PM CST. No damage was reported, but dust and a few small branches were lofted in the air by the funnel. The tornado was 10 yards wide and traveled nearly two tenths of a mile before dissipating at 4:36 PM CST.

Event 27: July 28, 2021

The brief EF0 tornado touched down nearly 2 miles west of Borth in Waushara County at 10:06 PM CST. The tornado damaged an outbuilding. The tornado path length was estimated at nearly a half mile, with a width of 33 yards. Peak winds were estimated at 80 mph. The tornado dissipated 1.8 miles west-southwest of Borth around 10:08 PM CST.

Event 28: August 8, 2021

The brief EF1 tornado touched down at 2:52 PM CST in Pleasant Lake, or 3.7 miles south-southwest of Coloma in Waushara County. The tornado moved north for nearly 3.5 miles before dissipating 2:58 PM CST just over a mile west of Coloma. The tornado produced damage to trees and houses. The total path length was estimated nearly 3.5 miles long with a maximum width of 350 yards. Peak winds were estimated at 90 to 95 mph.

Event 29: June 15, 2022

The EF1 tornado formed at 4:41 PM CST near West Bloomfield in northeast Waushara County. The tornado continued northeast before dissipating at 4:47 PM CST. The total path length was estimated at 4.8 miles long with a maximum width of 100 yards. The peak wind was estimated to be around 95 mph.

