

WINNEBAGO COUNTY TORNADO GUIDE (1950-2024)

Updated: 1/1/25

Event	Date			Time		F/EF	Width	Path
#	Month	Day	Year	(CST)	Start / End Location	Rank	(Yards)	(Miles)
1	4	3	1956	13:45-13:53	8 SW Eureka - 2 W Omro	4	400	11.5
2	5	28	1959	15:15	6 N - 9 NE Oshkosh	1	N/A	9
3	5	21	1960	17:30	15 W Oshkosh	1	N/A	N/A
4	5	8	1964	18:30-19:06	Winneconne - Wrightstown	2	100	35.0
5	6	6	1971	23:15	5 SW Oshkosh	1	50	3.8
6	6	13	1971	16:30	8 NW Oshkosh	1	50	0.3
7	7	30	1971	07:00	4 E Oshkosh (waterspout)	0	N/A	0.1
8	4	21	1974	14:40-15:08	5 S Ripon - Oshkosh	4	200	26.0
9	6	20	1979	13:45	3 S Oshkosh	1	N/A	N/A
10	4	27	1984	15:20-15:40	1 NE Winneconne - Freedom	4	600	27.5
11	7	26	1984	13:00-13:10	5 E Oshkosh (waterspout)	0	25	0.1
12	8	14	1987	17:40-17:43	1 W Menasha	1	100	0.3
13	5	24	1989	20:10-20:15	3 S Oshkosh	1	50	1.2
14	6	8	1993	17:35	1 E Pickett	0	25	0.1
15	7	18	1996	17:45	5 NE Oshkosh (waterspout)	0	N/A	0.1
16	8	23	1998	15:22	Menasha	0	10	0.1
17	5	6	2002	16:30-16:40	5 NW - 2.5 N Winneconne	0	50	4.0
18	5	6	2002	17:02	8 N Oshkosh - Wittman Field	0	20	0.1
19	6	8	2003	11:40	4 W Oshkosh - Wittman Field	0	15	0.1
20	6	8	2003	12:20-12:26	5 E - 5.5 ESE Oshkosh Wittman Field	0	40	0.5
21	5	6	2005	15:24-15:25	7 ESE - 7.8 ESE Oshkosh - Wittman Field	0	50	0.8
22	6	9	2005	17:40-17:50	5 SE - 5 E Oshkosh	0	40	3.0
23	6	10	2005	15:05	1 N Winneconne	0	20	0.1
24	6	10	2005	19:10	4 ESE Oshkosh	0	20	0.1
25	6	10	2005	19:22	3 E Oshkosh	0	20	0.1
26	6	10	2005	19:48	3 E Oshkosh	0	20	0.1
27	8	18	2005	18:40-18:48	4.5 W - 2.6 NW Neenah	0	50	4.0
28	7	19	2008	21:44-21:45	3.8 WNW - 3.4 WNW Menasha	1	40	0.5
29	5	4	2010	18:10-18:12	2.7 SE Zittau - 2.7 W Winchester	1	100	0.7
30	5	4	2010	18:13-18:17	2.2 SSW Winchester - 0.8 NNW Larsen	0	100	3.4
31	4	10	2011	18:53-19:04	0.3 NW Poy Sippi - 2.3 WSW Winchester	1	150	14.9
32	7	27	2014	18:05	3.5 SE Oshkosh Wittman Field (waterspout)	0	10	0.1
33	8	18	2014	15:23-15:25	3.3 NE Winchester - 4.0 NNE Larsen	0	50	2.1
34	6	14	2017	15:28-15:29	2.6 SSW Appleton - 1.7 NNW Little Chute	1	50	8.4
35	6	20	2020	16:01-16:02	0.7 N - 0.9 N Butte des Morts	0	50	0.2
36	6	20	2020	16:23-16:27	1.1 SSW - 0.5 SE Butte des Morts	0	75	1.1
37	6	20	2020	16:35-16:41	6.2 SE Oshkosh Wittman Field	0	75	3.4

TORNADO REFERENCE GUIDE – WINNEBAGO COUNTY

Event 1: April 3, 1956

Unseasonably warm air ahead of a strong cold front triggered showers and thunderstorms across the state. The F4 tornado developed near Berlin in Green Lake County around 1:45 PM CST and traveled 11.5 miles across rural areas of southeast Waushara County near the town of Aurora; then dissipated around 1:53 PM CST two miles west of Omro in Winnebago County. The tornado was 440 yards wide. Berlin was hit the hardest with six killed and 50 injured. Severe storms killed eight people across the state on this day.

Event 2: May 28, 1959

The F1 tornado struck 6 miles north of Oshkosh around 3:15 PM CST. The tornado traveled nine miles before dissipating 9 miles northeast of Oshkosh.

Event 3: May 21, 1960

The F1 tornado touched down fifteen miles west of Oshkosh around 5:30 PM CST.

Event 4: May 8, 1964

A long tracked F2 tornado was noted on this date across northeast Wisconsin. The tornado developed near Winneconne around 6:30 PM CST. The tornado traveled northeast across Menasha, striking the John Strange Paper Company. The tornado continued into Neenah, near the Fox Point Shopping Center. The Fox Point Shopping Center suffered extensive damage where windows were blown in, and sections of the roof were blown off. The tornado continued into the southeast corner of Appleton near the Calumet Street power substation. The tornado finally dissipated in Wrightstown around 7:06 PM. At least ten barns were destroyed near Kaukauna.

Event 5: June 6, 1971

The F1 tornado was reported 5 miles southwest of Oshkosh around 11:15 PM CST. The tornado was 50 yards wide and traveled nearly 4 miles before it dissipated. The tornado demolished one barn and damaged several others on highway 26 about five miles southwest of Oshkosh.

Event 6: June 13, 1971

The public reported the F1 tornado 8 miles northwest of Oshkosh around 4:30 PM CST. The tornado was 50 yards wide and only traveled a quarter of a mile. Many trees were down in small grove eight miles northwest of Oshkosh.

Event 7: July 30, 1971

Numerous F0 waterspouts were reported about 4 miles east of Oshkosh around 7 AM CST. The waterspouts formed east of Oshkosh as cold air with large cyclonic vorticity moved over the warm lake according to the monthly storm report.

Event 8: April 21, 1974

The F4 tornado first touched down 5 miles south of Ripon in Fond Du Lac County at about 2:40 PM CST. The tornado destroyed or severely damaged buildings on about 30 farms before approaching southwest Oshkosh at 2:58 PM CST. The tornado lifted 10 minutes later over northwest Oshkosh. The tornado traveled 26 miles and reached a maximum width of 200 yards. At Oshkosh, the tornado damaged 400 homes and business with 33 of the houses completely destroyed. Damage was estimated at 4.2 million dollars. In Oshkosh, thirty-five people were treated for injuries with only ten people injured seriously enough to be hospitalized.

Event 9: June 20, 1979

The F1 tornado touched down 3 miles south of Oshkosh around 1:45 PM CST. The tornado on this date followed almost the same path as another more destructive twister that hit the city in April 1974. The tornado destroyed two mobile homes and severely damaged five others. Four people were hospitalized due to the injuries they suffered from the tornado.

TORNADO REFERENCE GUIDE – WINNEBAGO COUNTY

Event 11: July 26, 1984

The F0 waterspout was noted 5 miles east of Oshkosh on Lake Winnebago between 1 PM and 1:10 PM CST.

Event 12: August 14, 1987

Considerable damage from the F1 tornado occurred one mile west of Menasha between 5:40 and 5:43 PM CST. The tornado was 100 yards wide and traveled a quarter of a mile. Most of the damage occurred at a warehouse where siding and a roof were twisted and ripped away. Two 100 square foot cement slabs were also torn from the building. Trees and power lines were downed as well.

Event 13: May 24, 1989

The F1 tornado touched down 3 miles south of Oshkosh between 8:10 and 8:15 PM CST. The tornado was 50 yards wide and traveled 1.2 miles before dissipating.

Event 14: June 8, 1993

The F0 small tornado briefly touched down in an open field one mile east of Pickett around 5:35 PM CST. The tornado was 25 yards wide and traveled a tenth of a mile.

Event 15: July 18, 1996

The F0 waterspout was spotted 5 miles east of Oshkosh over Lake Winnebago around 5:45 PM CST.

Event 16: August 23, 1998

The brief F0 tornado touched down near Menasha in Winnebago County at 3:22 PM CST. The tornado was 10 yards wide and traveled a tenth of a mile before dissipating. No damage was noted on the monthly storm report.

Event 17: May 6, 2002

The F0 tornado touched down 5 miles northwest of Winneconne around 4:30 PM CST. The tornado was 50 yards wide and traveled four miles on the ground before dissipating 2.5 miles north of Winneconne around 4:40 PM CST. The tornado moved across Lake Winneconne.

Event 18: May 6, 2002

The brief F0 tornado touched down 8 miles north of Wittman Field in Oshkosh at 5:02 PM CST. The tornado was 20 yards wide and was only on the ground for a tenth of a mile. No damage was noted with the tornado.

Event 19: June 8, 2003

The brief F0 tornado touched down 4 miles west of Oshkosh at 11:40 AM CST. The tornado was 15 yards wide and traveled a tenth of a mile before dissipating.

Event 20: June 8, 2003

The F0 waterspout was photographed about 5 miles east of Oshkosh Wittman Field at 12:20 PM CST. The waterspout was 40 yards wide and traveled a half mile before dissipating 5.5 miles east southeast of Oshkosh Wittman Field. The waterspout was observed by numerous participants of a fishing tournament that was taking place on the lake.

Photo by Troy Peterson



TORNADO REFERENCE GUIDE – WINNEBAGO COUNTY

Event 21: May 6, 2005

The F0 waterspout touched down 7 miles east southeast of Oshkosh Wittman Field at 3:24 PM CST. The waterspout was 50 yards wide and was on the ground for eight tenths of a mile before dissipating 7.8 miles east southeast of Oshkosh Wittman Field at 3:25 PM CST.

Event 22: June 9, 2005

The F0 waterspout touched down 5 miles southeast of Oshkosh on Lake Winnebago at 5:40 PM CST. The waterspout was 40 yards wide and traveled 3 miles before dissipating 5 miles east of Oshkosh at 5:50 PM CST.

Event 23: June 10, 2005

The F0 tornado touched down one mile north of Winneconne at 3:05 PM CST. The tornado was 20 yards wide and was on the ground a tenth of a mile.

Event 24: June 10, 2005

The F0 waterspout was reported 4 miles east southeast of Oshkosh on Lake Winnebago at 7:10 PM CST. The waterspout was 20 yards wide and was on the water a tenth of a mile. This was one of 3 waterspouts reported on Lake Winnebago on this evening.

Event 25: June 10, 2005

The F0 waterspout was reported 3 miles east southeast of Oshkosh on Lake Winnebago at 7:22 PM CST. The waterspout was 20 yards wide and was on the water a tenth of a mile. This was one of 3 waterspouts reported on Lake Winnebago on this evening.

Event 26: June 10, 2005

The F0 waterspout was reported 3 miles east southeast of Oshkosh on Lake Winnebago at 7:48 PM CST. The waterspout was 20 yards wide and was on the water a tenth of a mile. This was one of 3 waterspouts reported on Lake Winnebago on this evening.

Event 27: August 18, 2005

The F0 tornado touched down four and a half miles west of Neenah at 6:40 PM CST. The tornado was 50 yards wide and was on the ground for four miles before dissipating 2.6 miles northwest of Neenah at 6:48 PM CST. The tornado downed trees, stripping some siding from a home and destroying a corn crib.

Event 28: July 19, 2008

The brief EF1 tornado touched down 3.8 miles west northwest of Menasha around 10:44 PM CST. The tornado was 40 yards wide and traveled a half a mile before it dissipated 3.4 miles west northwest of Menasha at 10:45 PM CST. The tornado produced sporadic damage along a narrow path almost a half a mile long. An apartment complex sustained the heaviest damage. Four buildings were affected, two of which lost parts of their roofs.

Event 29: May 4, 2010

The EF1 tornado touched down 2.7 miles southeast of Zittau around 6:10 PM CST. The tornado was 100 yards wide and traveled seven tenths of a mile before it dissipated 2.7 miles west of Winchester at 6:12 PM CST. The tornado snapped numerous pine trees in a wooded area and threw a gazebo into the side of a house. The tornado also destroyed a 100 year old barn.

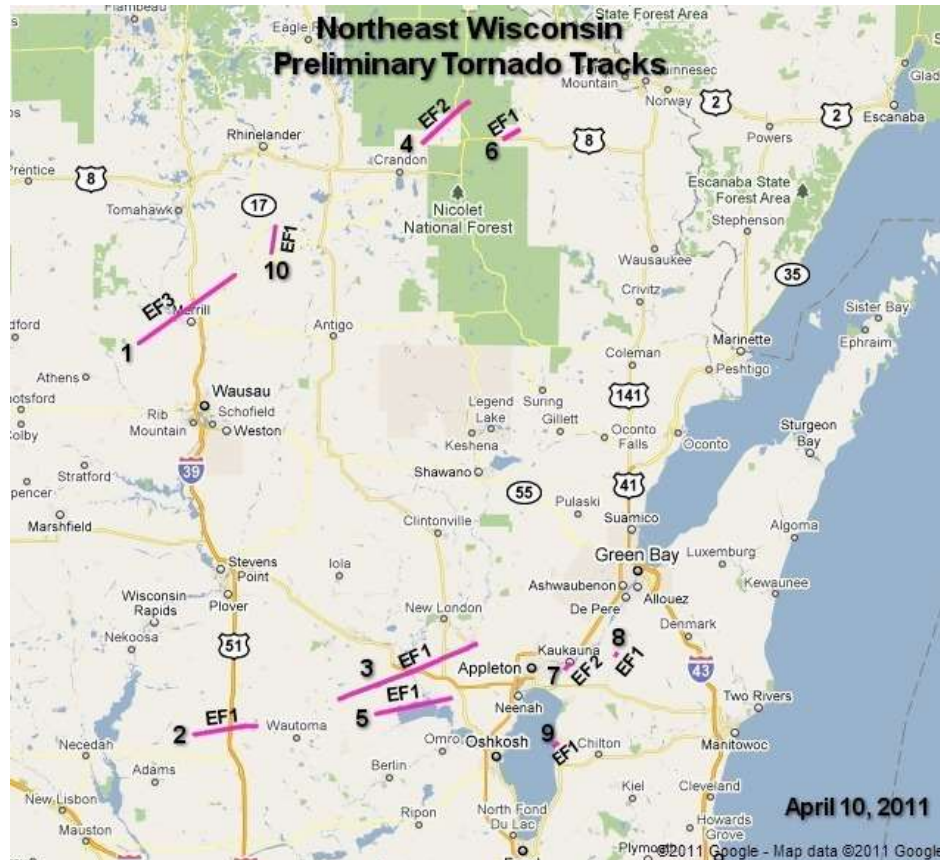
Event 30: May 4, 2010

The EF0 tornado touched down 2.2 miles south southwest of Winchester at 6:13 PM CST. The tornado was 100 yards wide and traveled 3.4 miles before dissipating 0.8 miles north northwest of Larsen at 6:17 PM CST. The tornado damaged several structures. It destroyed a shed, swirling 2 by 4's in the air. The 2 by 4's struck a house, damaging the roof. The tornado threw a trailer about 200 yards into a field and ripped siding off a garage. A small camper was knocked over.

TORNADO REFERENCE GUIDE – WINNEBAGO COUNTY

Event 31: April 10, 2011

The EF1 tornado developed 0.3 miles northwest of Poy Sippi, then moved east-northeast over the north shore of Lake Poygan. The tornado then entered Winnebago County at 7:04 PM CST. In Waushara County, the tornado damaged a house and destroyed a barn in the Poy Sippi area. Another barn was flattened near the north shore of Lake Poygan. Many pine trees were uprooted or snapped along the path of the storm. The average path width in Waushara County was 100 yards. In Winnebago County, the tornado moved along the north shore of Lake Poygan, causing most of the damage near Boom Bay on the northeast shore of Lake Poygan. Two homes were heavily damaged as portions of their roofs were partially ripped off. Several other houses sustained lesser damage in this area. In addition, two small mobile homes were rolled on their side and many trees were uprooted or snapped. The tornado dissipated about 2 miles west of Winchester, although damage occurred east and southeast of this location from straight-line thunderstorm winds. The average path width in Winnebago County was 100 yards.



TORNADO REFERENCE GUIDE – WINNEBAGO COUNTY

Event 32: July 27, 2014

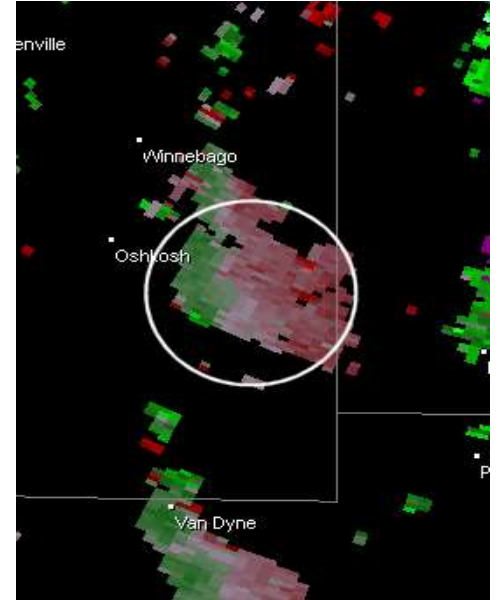
A very weak and brief EF0 waterspout formed around 6:05 PM CST under a rain shower over southern Lake Winnebago, about 5 miles southeast of Oshkosh. The waterspout (photo below) was on the water for a just a few seconds and then dissipated. The parent funnel was seen by hundreds of people across the area. No damage occurred.



Photograph submitted to NWS.



Radar image: Green Bay radar.



Velocity image: Green Bay radar.

Event 33: August 18, 2014

The EF0 tornado developed around 3:23 PM CST, causing minor damage as it moved east near Shady Lane a little over three miles northeast of Winchester in northern Winnebago County. The weak tornado caused two single wood power poles to partially lean in saturated soil and knocked over a few trees and limbs. Swirl marks could be seen in a field of tall grass. The tornado was not in contact with the ground during the entire path length (a little over two miles). The maximum width of the tornado was 50 yards with estimated winds of 65 to 75 mph before dissipating around 3:25 PM CST.

Event 34: June 14, 2017

The EF1 tornado touched down just over two and a half miles southwest of Appleton in far northeastern Winnebago County near the village of Fox Crossing around 2:28 PM CST. In Winnebago County, the tornado damaged nearly two dozen trees and uprooted several others. One house sustained roof damage by a fallen tree. The tornado then moved into Outagamie county about 1.8 miles south of Appleton at 2:29 PM CST. The tornado continued into Outagamie County as an EF0 tornado. In Outagamie County, the tornado uprooted or snapped several dozen trees, some of which fell on houses along its path across the southeast side of Appleton. Two large industrial buildings suffered damage on Appleton's east side. One building's large HVAC system was blown off its roof and another large building had several overhead doors blow in and lost portions of its roof and a wall. A self-service car wash lost its roof in Kimberly. In Little Chute, a building had an HVAC unit damaged and a couple of trees were knocked down. The tornado dissipated at 2:37 PM CST after crossing I-41 north of Kaukauna.

TORNADO REFERENCE GUIDE – WINNEBAGO COUNTY

Event 35: June 20, 2020

The brief EF0 tornado touchdown was witnessed by the Oshkosh Fire Department around 4:01 PM CST near Highway 45 near Butte des Morts. No damage was reported. The tornado was 50 yards wide and traveled a quarter of a mile before dissipating at 4:02 PM CST.

Event 36: June 20, 2020

A storm chaser and the public reported the EF0 tornado (waterspout) over Lake Butte des Morts near County S around 4:23 PM CST. The tornado traveled just over a mile and was 75 yards wide, dissipating before reaching shore around 4:27 PM CST.

Event 37: June 20, 2020

Multiple eyewitness reported the EF0 tornado (waterspout) over Lake Winnebago 5 to 6 miles southeast around 4:35 PM CST. The tornado was 75 yards wide and traveled nearly 3.4 miles before dissipating around 4:41 PM CST.



Event 36: EF0 near Butte des Morts
Photo by Hunter Bolssen



Event 37: EF0 over Lake Winnebago
Video / Still Image by Nate Laudolff