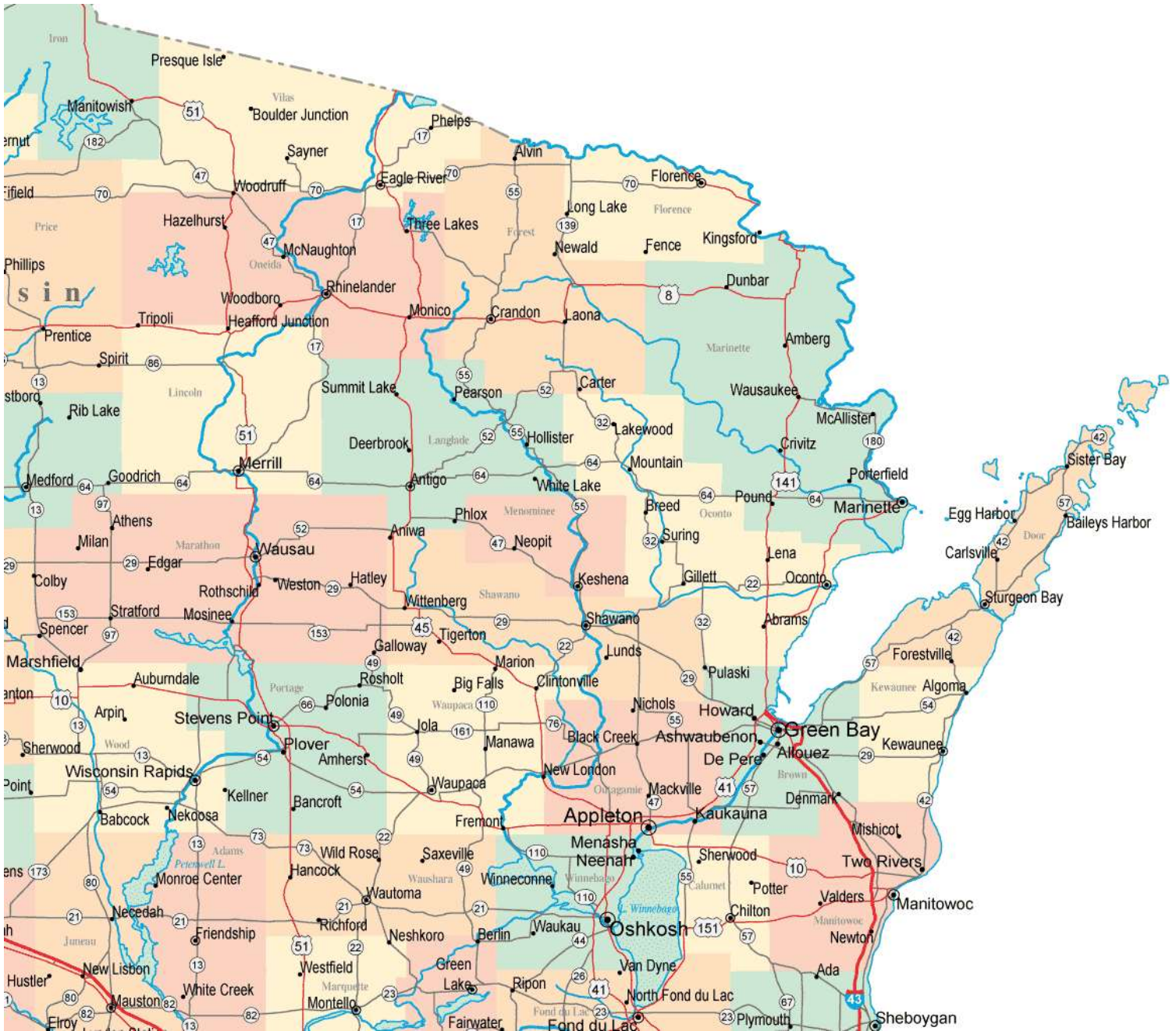


APRIL TORNADO / WATERSPOUT GUIDE (1950-2024) FOR NORTH CENTRAL AND NORTHEAST WISCONSIN

Updated: 1/1/25



APRIL TORNADO / WATERSPOUT GUIDE (1950-2024)

FOR NORTH CENTRAL AND NORTHEAST WISCONSIN

APRIL

BROWN

MENOMINEE

CALUMET

OCONTO

DOOR

ONEIDA

FOREST

OUTAGAMIE

FLORENCE

PORTAGE

KEWAUNEE

SHAWANO

LANGLADE

VILAS

LINCOLN

WAUPACA

MANITOWOC

WAUSHARA

MARATHON

WINNEBAGO

MARINETTE

WOOD

APRIL TORNADO / WATERSPOUT GUIDE

Event	F/EF	Date			Time		TOR in GRB Service Area
#	Rank	Month	Day	Year	(CST)	Start / End Location	County or Counties
1	2	4	15	1954	15:00	2 NE Neshkoro - Redgranite	Waushara
2	2	4	3	1956	12:50	3 S Bancroft - 2 NW Amherst	Portage
3	4	4	3	1956	13:45-13:53	Berlin - 2 W Omro	Waushara - Winnebago
4	2	4	6	1956	13:45-13:53	Ogdensburg - Symco	Waupaca
5	2	4	19	1957	16:00-16:15	3 W Wautoma - 2 NW West Bloomfield	Waushara
6	1	4	19	1957	16:00	Coddington - Bancroft	Portage
7	1	4	24	1960	16:00	7 SW Valders	Manitowoc
8	2	4	22	1970	20:40	Ashwaubenon - Green Bay north side	Brown
9	2	4	22	1970	21:00	De Pere - Green Bay	Brown
10	2	4	22	1970	21:00-21:10	1 N Casco - Rio Creek	Door - Kewaunee
11	2	4	22	1970	21:20-21:30	7 SE Maplewood	Door
12	2	4	22	1970	21:20	Algoma - 6 NE Algoma	Kewaunee
13	1	4	22	1970	21:10	2 NE Poland - 4 SE Luxemburg	Brown - Kewaunee
14	0	4	22	1971	17:30	4 SW Hilbert	Calumet
15	2	4	12	1974	14:05	5 W Athens	Marathon
16	2	4	12	1974	14:15	Wittenberg - Bowler	Shawano
17	4	4	21	1974	14:40-15:08	5 S Ripon - Oshkosh	Winnebago
18	2	4	21	1974	15:25	4 NNW Crivitz	Marinette
19	2	4	4	1981	00:35	4 W Kiel	Calumet
20	0	4	27	1984	04:05	Saratoga	Wood
21	2	4	27	1984	14:50	4 NW Antigo	Langlade
22	3	4	27	1984	14:37-15:07	Fawn Lake - Star Lake	Oneida - Vilas
23	3	4	27	1984	14:55-15:40	Union (Waupaca Co) - Legend Lake	Menominee - Shawano - Waupaca
24	4	4	27	1984	15:20-15:40	1 NE Winneconne - Freedom	Winnebago - Outagamie
25	2	4	27	1984	14:15	0.5 S Plover	Portage
26	1	4	20	1992	16:00-16:20	2 SW Arpin - Bakerville	Wood
27	0	4	24	1994	15:25	3 S Luxemburg	Kewaunee
28	1	4	26	1994	14:55-15:05	1.5 N Conover - 3 SE Land O'Lakes	Vilas
29	0	4	25	1996	17:55-17:57	2 W Pensaukee	Oconto
30	0	4	23	2001	13:26-13:46	12 NW - 9 NW Sturgeon Bay (waterspout)	Door
31	0	4	18	2002	15:49	2 W Bradley	Lincoln
32	0	4	18	2002	15:57	6 SW Woodboro	Oneida
33	0	4	18	2002	16:33	4 E Rhineland	Oneida
34	1	4	18	2002	18:13-18:27	3 SE Stratford - 6 NW Mosinee	Marathon
35	0	4	18	2002	18:32	6 SSW Wausau Airport	Marathon

APRIL TORNADO / WATERSPOUT GUIDE

Event	F/EF	Date			Time		TOR in GRB Service Area
#	Rank	Month	Day	Year	(CST)	Direction / Location	County or Counties
36	3	4	10	2011	17:08-17:41	2 N Hamburg - 1 SW Bloomville	Marathon - Lincoln
37	1	4	10	2011	17:35-17:42	2 NW Coloma - 4 ESE Hancock	Waushara
38	1	4	10	2011	17:50-17:58	5 S Parrish	Langlade
39	1	4	10	2011	18:06-18:43	1 SW Saxeville - 1 SE Hortonville	Waushara - Waupaca - Outagamie
40	2	4	10	2011	18:30-18:46	3 SE Argonne - 6 SE Long Lake	Forest - Florence
41	1	4	10	2011	18:53-19:04	0.3 NW Poy Sippi - 2.3 WSW Winchester	Waushara - Winnebago
42	1	4	10	2011	19:03-19:08	4.2 WNW - 3.2 N Armstrong Creek	Forest
43	2	4	10	2011	19:43-19:46	1.2 SW Kaukauna - 0.3 S Little Chute	Outagamie
44	1	4	10	2011	19:53-19:55	1.2 NNE Askeaton - 1.4 S Greenleaf	Brown
45	1	4	10	2011	19:59-20:01	1.6 NW Quinney - 1.5 SSE Stockbridge	Calumet
46	1	4	9	2017	23:54-23:55	5.0 SSW Taegesville - 4.9 S Taegesville	Marathon

APRIL TORNADO / WATERSPOUT GUIDE

Event 1: April 15, 1954

The F2 tornado struck around 3 PM CST two miles northeast of Neshkoro in Waushara County. The tornado traveled approximately six miles and reached a maximum width of 30 yards before dissipating at Redgranite. Widespread damage was reported at Redgranite, Lohrville and Spring Lake. Numerous small buildings and trees were damaged. The greatest single property damage occurred at the St. Marks Catholic Church in Redgranite. The frame structure was badly shaken by the storm, resulting in jammed doors and dislodged staircases and shattered walls. In the Spring Lake-Lohrville area, the greatest damage was in the town of Marion where a large barn was leveled. The wind scattered the tin roof for hundreds of yards in several directions.

Event 2: April 3, 1956

A strong spring storm killed 43 people nationwide, including eight in Wisconsin on this date. The F2 tornado developed 3 miles south of Bancroft in Portage County around 12:50 PM CST. The tornado traveled 18.2 miles to two miles northwest of Amherst before dissipating. The tornado reached a maximum width of 100 yards. Two fatalities were reported in Portage County.

Event 3: April 3, 1956

Unseasonably warm air ahead of a strong cold front triggered showers and thunderstorms across the state. The F4 tornado developed near Berlin in Green Lake County around 1:45 PM CST and traveled 11.5 miles across rural areas of southeast Waushara County near the town of Aurora; then dissipated around 1:53 PM CST two miles west of Omro in Winnebago County. The tornado was 440 yards wide. Berlin was hit the hardest with six killed and 50 injured. Severe storms killed eight people across the state on this day.

Event 4: April 6, 1956

The F2 tornado developed near Ogdensburg in Waupaca County around 1:45 PM CST. The tornado traveled 7 miles to Symco before dissipating around 1:53 PM CST. The tornado reached a maximum width of 100 yards.

Event 5: April 19, 1957

The F2 tornado developed 3 miles west of Wautoma in Waushara County around 4 PM CST. The tornado traveled nearly 23 miles and reached a maximum width of 50 yards before dissipating two miles northwest of West Bloomfield around 4:15 PM CST. No fatalities were reported at a farmhouse that was leveled in rural Wild Rose. The farm of Reuben Anderson, Route 2 Wild Rose was the principal destruction point in Waushara County. The tornado destroyed a 34 by 56 feet barn, a 10 by 30 feet wood silo, a chicken coop, a milk house, and woodshed.

Event 6: April 19, 1957

The F1 tornado touched down in Coddington, 12 miles southwest of Bancroft, in Portage County around 4 PM CST. The tornado traveled about 12 miles and reached a maximum width of less than 50 yards before dissipating in Bancroft.

Event 7: April 24, 1960

The F1 tornado touched down 7 miles southwest of Valders in Manitowoc County around 4 PM CST. The tornado was less than 50 yards wide and traveled about a mile before dissipating.

APRIL TORNADO / WATERSPOUT GUIDE

Event 8: April 22, 1970

Several tornadoes were reported across north-central and northeast Wisconsin on this date. The F2 tornado touched down around 8:40 PM CST in Ashwaubenon and moved northeast about four miles to the north side of Green Bay. Maximum width of the tornado was 800 yards. Much of the damage was concentrated in the Lambeau Field area. Among the most seriously damaged businesses were the Midway Motor Lodge motel and the nearby Forum Supper Club as well as property at Nanco Corporation. There were reports of damage to tunnels connecting the Brown County Arena to an annex. Several cars in the area parking lot were damaged by flying debris. Roofs of a several houses were damaged, and garages and barns were reported destroyed. Meanwhile, snow was occurring across northwest Wisconsin. Superior reported six inches of snow on the ground during the evening of the 22nd.

Event 9: April 22, 1970

Several tornadoes were reported across north-central and northeast Wisconsin on this date. The F2 tornado touched down around 9 PM CST in De Pere and traveled northeast for 7 miles through Allouez and then into the southeast side of Green Bay. The maximum width of the tornado was 800 yards. A church steeple was toppled in De Pere. Damage was reported at a lumber yard and canning company at Baird and Main Streets in Green Bay. Meanwhile, snow was occurring across northwest Wisconsin. Superior reported six inches of snow on the ground during the evening of the 22nd.

Event 10: April 22, 1970

Several tornadoes were reported across north-central and northeast Wisconsin on this date. The F2 tornado touched down around 9 PM CST one mile north of Casco in Kewaunee County. The tornado moved northeast for 11 miles before dissipating near Rio Creek in southern Door County around 9:10 PM CST. The tornado reached a maximum width of 500 yards. Fifteen barns near Casco and Rio Creek were destroyed. Two persons were injured when their house trailer was upended south of Forestville. Meanwhile, snow was occurring across northwest Wisconsin. Superior reported six inches of snow on the ground during the evening of the 22nd.

Event 11: April 22, 1970

Several tornadoes were reported across north central and northeast Wisconsin on this date. The F2 tornado touched down around 9:20 PM CST seven miles southeast of Maplewood in Door County. This may be the same tornado that tore through eastern Kewaunee County from Algoma to 6 miles northeast of Algoma. The tornado traveled about four miles and reached 500 yards in width in Door County before dissipating.

Event 12: April 22, 1970

Several tornadoes were reported across north-central and northeast Wisconsin on this date. The F2 tornado touched down around 9:20 PM CST from Algoma to 6 miles northeast of Algoma in Kewaunee County. The tornado traveled about five miles and reached a maximum width of 500 yards. Extensive damage was reported near Algoma northeast along the Lake Michigan shoreline. Among the buildings destroyed were a warehouse and a church steeple. Meanwhile, snow was occurring across northwest Wisconsin. Superior reported six inches of snow on the ground during the evening of the 22nd.

Event 13: April 22, 1970

The F2 tornado developed 2 miles northeast of Poland in extreme eastern Brown County around 9:10 PM CST. The tornado was 500 yards wide and traveled just over 7 miles to near Luxemburg in Kewaunee County before dissipating. Several farms were damaged and leveled the Kewaunee County Fair Grandstand at Luxemburg.

Event 14: April 22, 1971

The F0 tornado touched down briefly 4 miles southwest of Hilbert in Calumet County around 5:30 PM CST. The tornado was 25 yards wide and traveled three tenths of a mile.

APRIL TORNADO / WATERSPOUT GUIDE

Event 15: April 12, 1974

The F2 tornado briefly touched down 5 miles west of Athens in Marathon County around 2:05 PM CST. The tornado traveled 2 miles and reached a maximum width of 150 yards before dissipating. One barn was destroyed and wires down. Two horses in the field were rolled over by the tornado.

Event 16: April 12, 1974

The F2 tornado touched down in Wittenberg in Shawano County around 2:15 PM CST. The tornado traveled nearly 11 miles and reached a maximum width of 150 yards before dissipating near Bowler. Several farms between Wittenberg and Bowler were destroyed. The Wendler farm in the town of Morris and the Watters and Hintz farms in the town of Seneca sustained severe damage. One injury was reported when Mr. Hintz was injured when he was struck by a flying board.

Event 17: April 21, 1974

The F4 tornado first touched down 5 miles south of Ripon in Fond Du Lac County at about 2:40 PM CST. The tornado destroyed or severely damaged buildings on about 30 farms before approaching southwest Oshkosh at 2:58 PM CST. The tornado lifted 10 minutes later over northwest Oshkosh. The tornado traveled 26 miles and reached a maximum width of 200 yards. At Oshkosh, the tornado damaged 400 homes and business with 33 of the houses destroyed. Damage was estimated at 4.2 million dollars. In Oshkosh, thirty-five people were treated for injuries with only ten people injured seriously enough to be hospitalized.

Event 18: April 21, 1974

The F2 tornado touched down 4 miles north northwest of Crivitz in Marinette County around 3:25 PM CST. The tornado was 200 yards wide and traveled four miles before dissipating.

Event 19: April 4, 1981

The brief F2 tornado touched down around 12:35 AM CST 4 miles west of Kiel in Calumet County. The tornado was only 25 yards wide and traveled about a quarter of a mile. Six trailers in a line in the Country Aire Trailer Court were destroyed. One trailer was lifted into the air and deposited upside down.

Event 20 April 27, 1984:

The F0 tornado briefly touched down in the township of Saratoga in Wood County around 4:05 AM CST. The tornado was 50 yards wide and traveled a mile before dissipating. Numerous trees were downed, and some residential damage occurred. Hail the size of three quarters of an inch also fell during the storm.

Event 21: April 27, 1984

There were ten tornadoes on this date across the entire state. The F2 tornado touched 4 miles northwest of Antigo in Langlade County around 2:50 PM CST. The tornado was 20 yards wide and traveled 7.5 miles across Langlade County. One home and three barns were demolished, and twenty-five head of dairy cows were crushed to death in one barn.

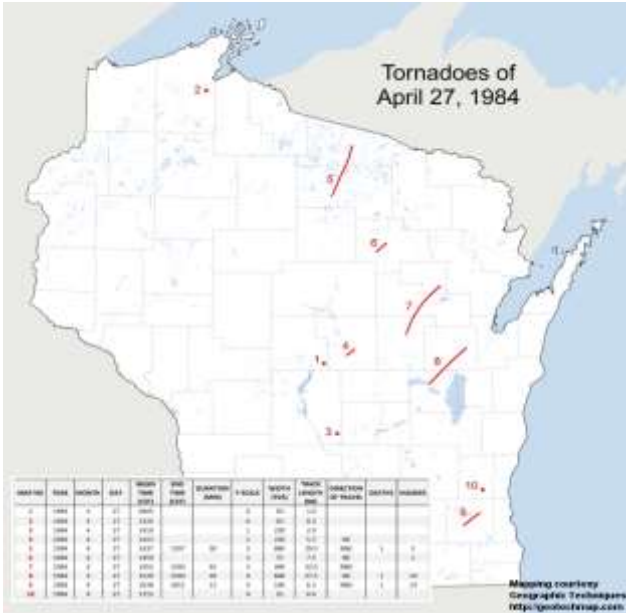
Event 22: April 27, 1984

The F3 tornado developed near Fawn Lake in Oneida County around 2:37 PM CST. The tornado traveled to near Star Lake in Vilas County before dissipating around 3:07 PM CST. The tornado leveled several thousand acres of forest, destroyed or damaged 80 homes and cabins, ripped up docks and tossed boats in the air or wrapped them around trees. A Fawn Lake man was killed after getting his family to safety. The hardest hit areas were Fawn Lake, Two Lakes, Hasbrook and Gilmore Lakes in Oneida County. In Vilas County, the hardest hit areas were St. Germain Lake, Lost Lake and Star Lake. The tornado traveled 29 miles and reached a maximum width of 880 yards.

APRIL TORNADO / WATERSPOUT GUIDE

Event 23: April 27, 1984

Another F3 tornado touched down on April 27th in Union township in Waupaca County around 2:55 PM CST. The tornado skipped north northeast to Legend Lake in Menominee County where the tornado dissipated around 3:40 PM CST. The tornado traveled 32 miles and reached a maximum width of 440 yards. Damage occurred to 41 homes and cabins, 5 barns, 19 garages and sheds as well as several hundred acres of forest. The hardest hit areas were around Marion in Waupaca County, the town of Pella in Shawano County, and the South Branch-Legend Lake areas of Menominee County. Overall, there were six tornadoes on this date across north central and northeast Wisconsin. The strongest tornado (F4) occurred across Winnebago and Outagamie Counties around the same time these two tornadoes occurred. Across the state of Wisconsin, there were ten tornadoes reported on this date.



Event 24: April 27, 1984

The article for this date was written by Scott Cultice, forecaster at the National Weather Service in Green Bay. During the late afternoon of April 27, 1984, multiple super cell thunderstorms developed ahead of a strong cold front that moved across Wisconsin. Ten tornadoes were reported across the state, including three killer tornadoes: Tornadoes were reported in northern Wisconsin near St. Germain, one west of Appleton, and the third in southeast Wisconsin in Waukesha County. This outbreak of killer tornadoes was one of the bigger outbreaks in northeast Wisconsin since accurate tornado records began in 1950. Around 3:20 PM CST, a tornado formed near the town of Butte des Morts in northern Winnebago County and quickly intensified into a destructive tornado. The violent storm moved northeast across the town of Clayton, killing one person, and destroying many houses. The tornado continued to track northeast toward the northwest side of the city of Appleton. By about 3:40 PM CST, the tornado wreaked havoc across the western edge of the Outagamie County Airport and near the town of Greenville. The tornado finally dissipated near Freedom.

An estimated two dozen homes were destroyed and many more were damaged across the Fox Valley that afternoon. The storm killed one person and injured 19 more. Total cost of the destruction over the Fox Valley was \$2.5 million (\$15 million in today's dollars). The tornado traveled on the ground at about 40 mph and, for a short time, was over one quarter mile wide. The twister was on the ground for over 27 miles. It was classified as an F4 tornado, now referred to as an EF4 on today's Enhanced Fujita Scale (wind speeds of 166-200 mph). In addition to the Fox Valley tornado, five other tornadoes were reported across central and northeast Wisconsin that day. A F3 tornado, with winds estimated near 140 mph, tore through Oneida and Vilas counties, killing one person south of St. Germain and injuring eight others. Another F3 tornado was reported across Waupaca, Shawano, and Menominee counties causing considerable damage. Other tornadoes were observed over Wood, Portage, and Langlade counties.



APRIL TORNADO / WATERSPOUT GUIDE

Event 25: April 27, 1984

There were ten tornadoes on this date across the entire state. The F2 tornado touched down a half mile south of Plover in Portage County around 2:15 PM CST. The tornado was 220 yards wide and traveled five and a half miles before dissipating. At least nine homes and numerous sheds and barns were destroyed. A bun feeder wagon was thrown 150 yards which snapped a sixty-five feet cement silo. Ping pong size hail accompanied the storm.

Event 26: April 20, 1992:

The F1 tornado formed 2 miles southwest of Arpin in Wood County around 4 PM CST. The tornado was 25 yards wide and traveled 9.5 miles before dissipating a half mile south of Bethel or near Bakerville around 4:20 PM CST. Damage included: a shed was knocked down near Arpin, a mobile home was picked up and twisted around near Bethel and some roof damage was reported at Bakerville.

Event 27: April 24, 1994

The F0 tornado touched down 3 miles south of Luxemburg in Kewaunee County around 3:25 PM CST. The tornado was 25 yards wide and was on the ground for a tenth of a mile. No damage was reported with this storm.

Event 28: April 26, 1994

The F1 tornado touched down a mile and a half north of Conover in Vilas County around 2:55 PM CST. The tornado was 150 yards wide and traveled four and a half miles before dissipating 3 miles southeast of Land O' Lakes around 3:05 PM CST. The tornado damaged a house just north of Conover and leveled hundreds of trees along its four and a half miles path into the Nicolet National Forest.

Event 29: April 25, 1996

A cold-core F0 tornado briefly touched down 2 miles west of Pensaukee in Oconto County around 5:55 PM CST. The tornado was 40 yards wide and traveled a tenth of a mile before dissipating at 5:57 PM CST. Several 6 to 8 inches diameter birch trees were knocked down.

Event 30: April 23, 2001

The F0 waterspout developed 6 miles west southwest of Fairland in Door County around 1:26 PM CST. The waterspout moved north along the shoreline before it dissipated 9 miles northwest of Sturgeon Bay.

Event 31: April 18, 2002

The brief F0 tornado touched down 2 miles west of Bradley in Lincoln County at 3:49 PM CST. The tornado was 25 yards wide and was on the ground for a tenth of a mile. The tornado snapped several trees.

Event 32: April 18, 2002

The brief F0 tornado touched down 6 miles southwest of Woodboro in Oneida County at 3:57 PM CST. The tornado was 25 yards wide and was on the ground for a tenth of a mile. The tornado snapped several trees.

Event 33: April 18, 2002

The brief F0 tornado touched down 4 miles east of Rhinelander in Oneida County at 4:33 PM CST. The tornado was 25 yards wide and was on the ground for a tenth of a mile. The tornado snapped several trees.

Event 34: April 18, 2002

The F1 tornado formed 3 miles southeast of Stratford in Marathon County around 6:13 PM CST. The tornado was 100 yards wide and traveled 14 miles before dissipating 6 miles northwest of Mosinee around 6:27 PM CST. The tornado downed hundreds of trees, while numerous barns and farm sheds were destroyed by a combination of the tornado and straight-line winds. Plows had to be used to clear trees from some of the roads.

APRIL TORNADO / WATERSPOUT GUIDE

Event 35: April 18, 2002

The brief F0 tornado touched down 6 miles south southwest of the Wausau Airport in Marathon County around 6:32 PM CST. The tornado was 25 yards wide and was on the ground for a tenth of a mile. The tornado snapped several trees.

Event 36: April 10, 2011

The EF3 tornado developed about 2 miles north of Hamburg at 5:08 CST PM and moved northeast into Lincoln County at 5:10 PM CST. Pine trees were uprooted, and large branches were broken in the path of the storm. One house sustained damage to its siding and several barns were blown down or lost their roofs in Marathon County. The tornado was rated an EF0 in Marathon County. The average width of the tornado in Marathon County was 100 yards. The tornado reached EF3 intensity on the north side of Merrill in Lincoln County at approximately 5:22 PM CST where 22 homes and 7 businesses were destroyed. Several homes lost nearly all exterior and some interior walls. In addition, 22 homes and one business sustained major damage, and 20 homes and four businesses sustained minor damage. A 67 year old male was thrown over 200 feet from his bedroom and suffered broken ribs, a ruptured spleen and a bruised lung. Another person sustained minor injuries. The tornado tore a path over 20 miles long in Lincoln County before dissipating. The maximum width of the tornado was six tenths of a mile (1,050 yards) wide. The average width was about 400 yards.



Photo by Julia Berg



Photo by: Samual Hall

Event 37: April 10, 2011

The EF1 tornado moved out of Adams County and entered Waushara County at 5:35 PM CST about 1.8 miles northwest of Coloma. The worst damage occurred just inside the Waushara County line. A mobile home roof was torn off and roof damage was noted to several homes. The average width of the tornado was about 80 yards.

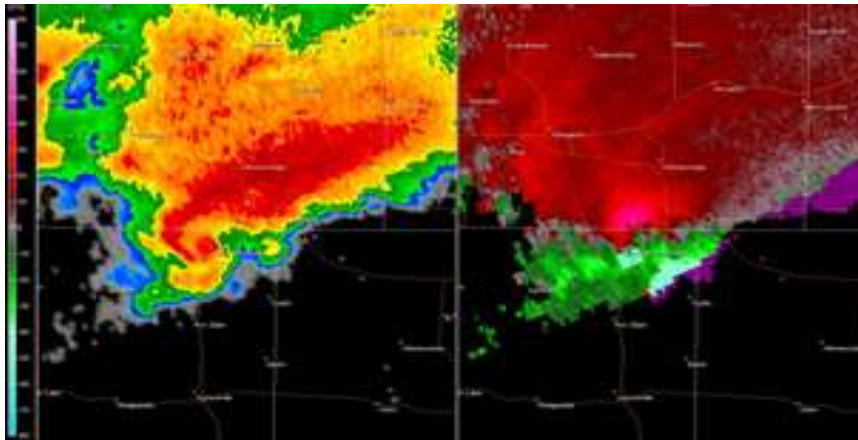
Event 38: April 10, 2011

The EF1 tornado formed about 5 miles south of Parrish around 5:50 PM CST and moved just east of north for a little over five miles. The tornado affected about 1600 acres of hardwood and softwood trees. It was estimated that over one million trees were snapped, uprooted, or suffered serious damage. The loss to timber alone is estimated at over one million dollars. One cabin was destroyed by fallen trees. The tornado was seen by a storm chaser at 5:55 PM CST. The average width of the tornado was 250 yards.

APRIL TORNADO / WATERSPOUT GUIDE

Event 39: April 10, 2011

The EF1 tornado developed at approximately 6:06 PM CST one mile southwest of Saxeville in Waushara County and moved east-northeast across east-central Wisconsin. Numerous pine trees were snapped or uprooted near the initial point of contact. As the tornado moved into West Bloomfield, several farm buildings were heavily damaged, including a barn that collapsed. The tornado had an average width of 100 yards, but it was not on the ground continuously. The tornado entered Waupaca County at 6:20 PM CST southwest of Fremont. Several farm buildings were impacted by the tornado in addition to many trees. Near Readfield, a barn was lifted and rolled off its foundation. A poorly anchored house roof, which overhung the house walls was completely removed with the debris strewn nearly a quarter of a mile to the northeast. The average width of the tornado was 100 yards. The tornado moved into Outagamie County at 6:32 PM CST. The tornado, which was not on the ground the entire time, damaged a couple of farm buildings just south of Hortonville before it dissipated. One of the buildings lost part of its roof. The average width was 100 yards.



Note: Radar image from NWS Green Bay

Event 40: April 10, 2011

The EF2 tornado developed 3.5 miles southeast of Argonne and moved northeast across Forest County. The tornado uprooted and snapped hundreds of trees, some of which fell on vacation cabins along the path of the tornado. The hardest hit area was several miles east Argonne shortly after the tornado developed. A large part of the roof of a house was removed. The tornado continued northeast in Florence County 6:46 PM CST. The average width of the tornado was 250 yards in Forest County. In Florence County, several large tree branches were broken before the tornado dissipated. The average path width of the tornado in Florence County was 75 yards.

Event 41: April 10, 2011

The EF1 tornado developed 0.3 miles northwest of Poy Sippi, then moved east-northeast over the north shore of Lake Poygan. The tornado then entered Winnebago County at 7:04 PM CST. In Waushara County, the tornado damaged a house and destroyed a barn in the Poy Sippi area. Another barn was flattened near the north shore of Lake Poygan. Many pine trees were uprooted or snapped along the path of the storm. The average path width in Waushara County was 100 yards. In Winnebago County, the tornado moved along the north shore of Lake Poygan, causing most of the damage near Boom Bay on the northeast shore of Lake Poygan. Two homes were heavily damaged as portions of their roofs were partially ripped off. Several other houses sustained lesser damage in this area. In addition, two small mobile homes were rolled on their side and many trees were uprooted or snapped. The tornado dissipated about 2 miles west of Winchester, although damage occurred east and southeast of this location from straight-line thunderstorm winds. The average path width in Winnebago County was 100 yards.

APRIL TORNADO / WATERSPOUT GUIDE

Event 42: April 10, 2011

The EF1 tornado (2nd tornado on this day) formed in Forest County about four miles west of Armstrong Creek at 7:03 PM CST. The tornado snapped and uprooted trees and damaged two houses. One of the houses sustained significant roof damage as the tornado moved across the area. The average width of the tornado was 125 yards.

Event 43: April 10, 2011

The EF2 tornado touched down in the southwest side of Kaukauna near County Road CE at 7:43 PM CST. The tornado cut through the center of a subdivision as it moved north-northeast to near the Fox River before lifting off the ground. Seven homes were destroyed, 24 homes and four businesses sustained major damage and 160 other homes sustained minor damage. Several houses lost large sections of their roofs in the hardest hit area of the city. The average path width was 125 yards.

Event 44: April 10, 2011

The brief EF1 tornado touched down about a mile and a half south of Greenleaf. The tornado damaged the tops of two silos and then ripped the roof off a barn. Average width of the tornado was 75 yards.

Event 45: April 10, 2011

The brief EF1 tornado moved off Lake Winnebago and onshore south of Stockbridge just before 8 PM CST. The waterspout was seen moving onshore, damaging two homes. A three-season room on one of the houses was ripped off the structure. The tornado moved northeast and tore a section off the roof of a large outbuilding. The tops of trees were snapped in two areas along the path of the tornado. The average width of the tornado was 75 yards.



APRIL TORNADO / WATERSPOUT GUIDE

Event 46: April 9, 2017

The EF1 tornado touched about five miles south southwest of Taegesville (just west of Wausau) in Marathon County around 11:54 PM CST. The brief tornado developed in association with a small line of severe thunderstorms (straight line wind damage also reported) in Marathon County. Two structures sustained significant storm damage, with one building had its windows blown out along with roofing material ripped off the building. The other structure had a garage door blown off. Several other houses had minor damage. Around 100 mature pine trees were snapped. The tornado was approximately 100 yards wide and traveled just under a half of a mile before dissipating at 11:55 PM CST.