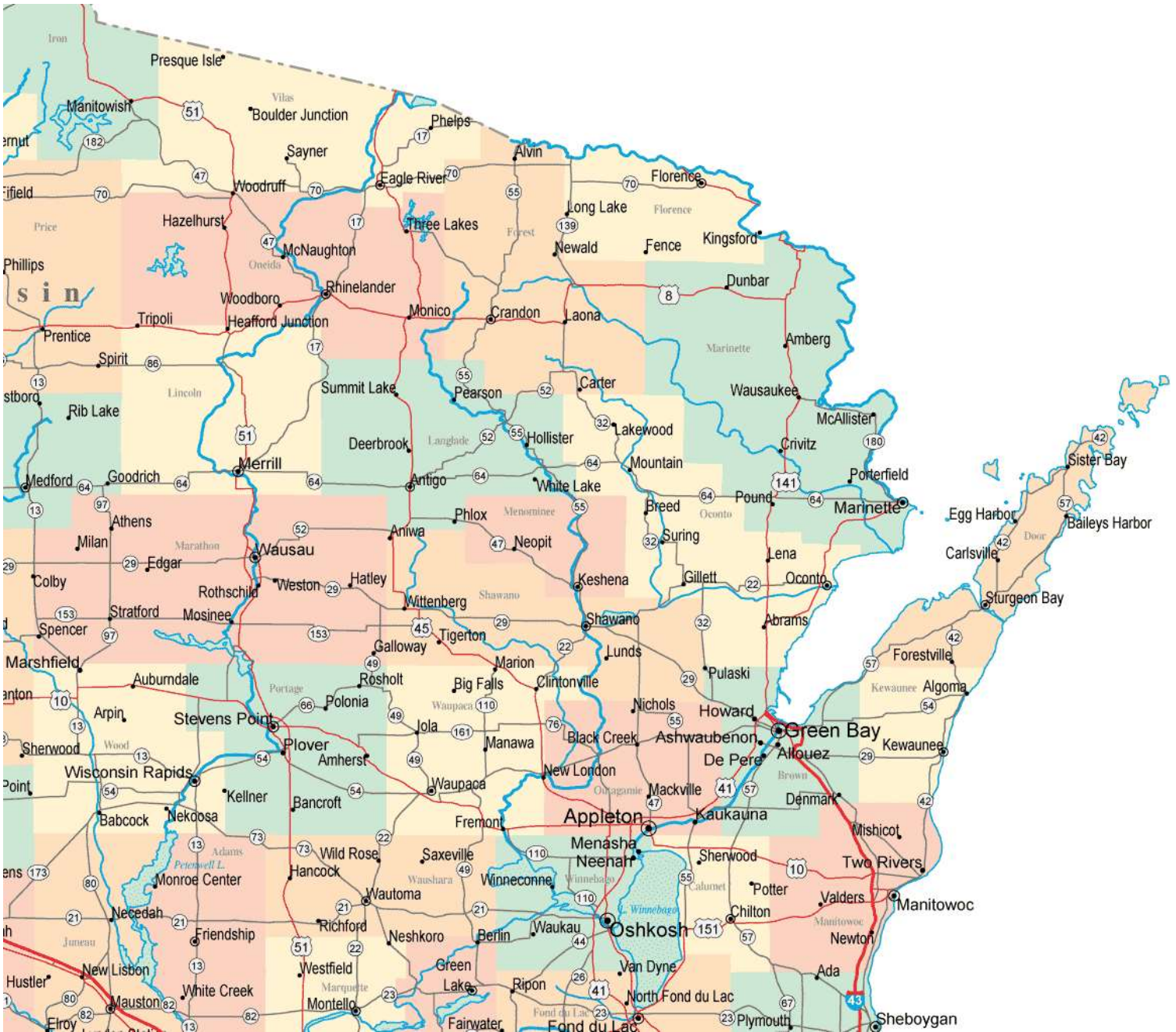


AUGUST TORNADO / WATERSPOUT GUIDE (1950-2024) FOR NORTH CENTRAL AND NORTHEAST WISCONSIN

Updated: 1/1/25



AUGUST TORNADO / WATERSPOUT GUIDE (1950-24)
FOR NORTH CENTRAL AND NORTHEAST WISCONSIN

BROWN

MENOMINEE

CALUMET

OCONTO

DOOR

ONEIDA

FOREST

OUTAGAMIE

FLORENCE

PORTAGE

KEWAUNEE

SHAWANO

LANGLADE

VILAS

LINCOLN

WAUPACA

MANITOWOC

WAUSHARA

MARATHON

WINNEBAGO

MARINETTE

WOOD

AUGUST TORNADO / WATERSPOUT GUIDE

Event	F/EF	Date			Time		TOR in GRB Service Area
#	Rank	Month	Day	Year	(CST)	Start / End Location	County or Counties
1	1	8	30	1958	15:26	6 SE Wausaukee	Marinette
2	2	8	28	1959	14:04	3 N Appleton	Outagamie
3	2	8	22	1964	14:00	6 W Bancroft - Grant	Portage
4	1	8	5	1968	14:00	3 NW Seymour	Outagamie
5	2	8	16	1968	12:30	Kaukauna	Outagamie
6	2	8	16	1968	21:20	5 SE Hofa Park - 4 S Pulaski	Brown
7	4	8	19	1968	16:10	3 SW Pound - Marinette	Marinette
8	2	8	19	1968	17:30	4 W - 11 E Fenwood	Marathon
9	1	8	21	1972	15:10	Goodwin - Two Rivers	Manitowoc
10	3	8	31	1977	18:15	1 SW Stratford - Wausau	Marathon
11	1	8	4	1979	10:00	Manitowoc	Manitowoc
12	2	8	9	1979	18:20	Rockland Beach	Calumet
13	1	8	9	1979	18:56	Green Bay - northeast	Brown
14	2	8	12	1985	18:13-18:30	6 S Marshfield - Auburndale	Wood
15	0	8	12	1985	19:30-19:45	1 N Richford	Waushara
16	1	8	14	1987	17:40-17:43	1 W Menasha	Winnebago
17	1	8	1	1988	18:52	1 W Saint Germain	Vilas
18	0	8	1	1988	18:20	3 S Hazlehurst	Oneida
19	0	8	1	1988	19:22	2 SE Eagle River	Vilas
20	1	8	4	1988	14:35-14:45	1 E Reedsville - 2 N Cato	Manitowoc
21	3	8	29	1992	19:10-19:55	1 N Wautoma - 3 SE Poy Sippi	Waushara
22	0	8	9	1993	20:15	1 N Tripoli	Oneida
23	1	8	27	1994	21:07	Hancock	Waushara
24	1	8	27	1994	21:41-21:50	1.5 S Wausaukee - 3 SE Wausaukee	Marinette
25	2	8	7	1996	01:45-01:49	6.5 N Stratford - 2.5 NNW Fernwood	Marathon
26	1	8	7	1996	01:46-01:47	1 N - 1.2 NE Stratford	Marathon
27	1	8	7	1996	02:19-02:21	0.4 SW Shantytown - Shantytown	Marathon
28	0	8	23	1998	15:22	Menasha	Winnebago
29	3	8	23	1998	17:30-17:44	3 SW Egg Harbor - 5 SE Egg Harbor	Door
30	0	8	3	1999	17:45	3 W Pittsville	Wood
31	0	8	4	1999	16:05-16:15	21 ESE Sturgeon Bay (waterspout)	Door
32	0	8	14	2000	19:10	Lake Tomahawk	Oneida
33	1	8	3	2003	13:59-14:03	0.3 W - 0.2 ENE Potter	Calumet
34	0	8	18	2005	17:32	6 WSW - 3.7 SW Wautoma	Waushara
35	0	8	18	2005	18:38-18:41	4 SSW - 3.4 SW New London	Waupaca
36	0	8	18	2005	18:40-18:48	4.5 W - 2.6 NW Neenah	Winnebago
37	1	8	18	2005	19:45-19:49	6 ENE - 6.8 ENE Wrightstown	Brown
38	1	8	18	2005	20:35	6.5 SSW - 5.7 S Manitowoc	Manitowoc
39	1	8	20	2010	15:20-15:22	2 SE - 2.7 ESE Greenleaf	Brown
40	1	8	19	2011	15:45-15:56	2.9 NW - 5.2 ESE Wausaukee	Marinette
41	0	8	23	2011	16:58	0.3 NW Arpin	Wood

AUGUST TORNADO / WATERSPOUT GUIDE

Event	F/EF	Date			Time		TOR in GRB Service Area
#	Rank	Month	Date	Year	(CST)	Start / End Location	County or Counties
42	0	8	23	2011	17:56-17:57	0.9 - 1.1 SE Briarton	Shawano
43	0	8	23	2011	20:05-20:06	0.8 ENE - 1.3 E Sherwood	Calumet
44	0	8	9	2012	12:10-12:20	6 S Kewaunee (waterspout)	Kewaunee
45	0	8	9	2012	12:25-12:35	6 S Kewaunee (waterspout)	Kewaunee
46	1	8	6	2013	23:22-23:33	4 NNE Partridge - 0.8 WSW Hortonville	Waupaca - Outagamie
47	2	8	6	2013	23:24-23:33	1.2 W New London - 0.4 WSW Greenville	Waupaca - Outagamie
48	1	8	6	2013	23:38-23:53	0.4 SE Mackville - 2.7 W Morrison	Outagamie - Brown
49	1	8	6	2013	23:38-23:52	3.5 E Greenville - 2.6 NNE Brillion	Outagamie, Brown - Calumet
50	1	8	6	2013	23:40-00:10	2.7 ENE Mackville - 1.1 NNE Larrabee	Outagamie - Brown - Manitowoc
51	1	8	6	2013	00:05-00:10	0.5 SSE Henrysville - 1 NE Stangelville	Brown - Calumet - Kewaunee
52	0	8	18	2014	15:23-15:25	3.3 NE Winchester - 4.0 NNE Larsen	Winnebago
53	1	8	4	2016	10:20-10:26	1.3 NNE Cherokee - 4.4 SSW Stratford	Marathon
54	0	8	20	2016	09:03-09:06	1.1 W - 0.8 NW Kewaunee	Kewaunee
55	1	8	28	2018	15:34-15:35	2.2 NNW - 2.1 N Kiel	Manitowoc
56	0	8	7	2019	16:48-16:57	2.3 SE Green Bay - 1.9 N Pine Grove	Brown
57	1	8	8	2021	14:52-14:58	3.7 SSW - 1.1 W Coloma	Waushara
58	1	8	10	2021	16:58-17:11	1.3 SE Stinson - 2.4 SW Drephal	Outagamie
59	0	8	11	2021	13:08-13:09	1 SW - 0.8 SSW Angelica	Shawano
60	0	8	11	2021	13:14-13:22	0.8 WNW - 1.5 E Pulaski	Brown

AUGUST TORNADO / WATERSPOUT GUIDE

Event 1: August 30, 1958

The F1 tornado was reported 6 miles southeast of Wausaukee in Marinette County around 3:26 PM CST. The tornado was 100 yards wide and traveled a mile before dissipating.

Event 2: August 28, 1959

Several funnel clouds were reported near the Outagamie County Airport by a pilot, and several other funnel clouds were noted by the Kimberly, Little Chute and Kaukauna police. The F2 tornado touched down about 3 miles north of Appleton around 2:04 PM CST. The tornado traveled approximately a mile before dissipating and had a maximum width of 35 yards.

Event 3: August 22, 1964

The F2 tornado touched down six miles west of Bancroft and traveled approximately 7 miles to the town of Grant around 3 PM CST in Portage County. The tornado had a maximum width of 300 yards.

Event 4: August 5, 1968

The F1 tornado touched down 3 miles northwest of Seymour in Outagamie County around 2 PM CST. The tornado was 150 yards wide and was on the ground for two miles before dissipating. Nine barns and farm buildings were destroyed.

Event 5: August 16, 1968

The F2 tornado touched down near Kaukauna in Outagamie County and traveled 2 miles before dissipating around 12:30 PM CST. The maximum width of the tornado was 100 yards. The Mueleman farm near Kaukauna experienced severe damage. A barn was destroyed along with many trees. His home also suffered damage as the roof was torn off and windows were knocked out.

Event 6: August 16, 1968

The F2 tornado first formed about 5 miles southeast of Hofa Park in extreme western Brown County on the Brown - Shawano County line. The tornado moved east about a mile and dissipated four miles south of Pulaski around 9:20 PM CST. The tornado reached a maximum width of 100 yards. A 40 year old dance hall on Highway 29 at the Shawano - Brown County line was destroyed. The building exploded and debris was scattered over nearby fields. The 73 year old owner was hospitalized.

Event 7: August 19, 1968

The funnel was first observed at about 4 PM CST near Breed but remained aloft until three miles southwest of Pound in Marinette County. The F4 tornado developed 3 miles southwest of Pound around 4:10 PM CST and traveled nearly 22 miles before dissipating in Marinette. The tornado moved east about 3 miles south of Highway 53, destroying farms near Pound and again just south of Marinette. Large hail three inches in diameter fell north of the tornado track. Two elderly brothers, John and Cecil Maloney were fatally injured as their farmhouse near Pound blew apart. A third brother James, who was in bed when the winds struck was found on some bed springs in a nearby cornfield. He was hospitalized in satisfactory condition. Two more people were injured at Marinette when the tornado struck near the airport. Nearly twenty counties were included in a series of thunderstorm warnings issued by the Weather Bureau.

Event 8: August 19, 1968

The F2 tornado form about 4 miles east of Fenwood in Marathon County near County Trunk P just west of Highway 97 around 5:30 PM CST. The tornado traveled just over fourteen miles to the east before dissipating about eleven miles east of Fenwood. The maximum width of the tornado was 75 yards. Twenty-five barns mostly on the north side of County Trunk P were flattened. Damage was estimated at more than one million dollars.

AUGUST TORNADO / WATERSPOUT GUIDE

Event 9: August 21, 1972

The F1 tornado touched down near Goodwin in Manitowoc County around 3:10 PM CST. The tornado was 50 yards wide and traveled approximately 12 miles to Two Rivers. The tornado struck the Van Koevering residence, uprooting five large trees in the yard. Tree and wire damage occurred along Highway 147 one mile south of Mishicot and near Highway 42 and near Shambeau Road near Two Rivers. The tornado moved eastward out over Lake Michigan.

Event 10: August 31, 1977

On the evening of the 31st, a devastating F3 tornado spun out a 27 miles path of destruction across Marathon County around 6:15 PM CST. The first sighting of the tornado came seven miles southwest of Fenwood. The funnel base was described as reaching tree top levels as it downed barns in the area. The tornado continued to near Marathon City where more barns were destroyed. The tornado caused extensive damage to Ginseng crops in the area. In Rib Mountain, 15 homes were demolished, and 30 others were severely damaged. The storm moved into southwest Wausau damaging a mill and lumber yard. As the funnel cloud moved across the southern end of Wausau, brief touchdowns were noted at Grand Avenue and at Tenth and Manson Streets. The funnel lifted and moved eastward out of the city limits of Wausau, touching down for a final time on Linden Street. Barns and sheds were destroyed on Linden. The tornado reached a maximum width of a thousand yards. Property damage was close to two million dollars.

Event 11: August 4, 1979

The F1 tornado struck near Manitowoc in Manitowoc County around 10 AM CST. Several buildings on a farm were destroyed. There was no documentation on path length or width of the tornado.

Event 12: August 9, 1979

The F2 tornado touched down near Rockland Beach in Calumet County around 6:20 PM CST. The strong tornado only traveled about a mile and was fifty yards wide. One death was attributed to the tornado. A Rockland Beach woman died after the winds demolished the family home. She was crushed as the family's first floor fireplace fell through to the basement. The husband and three children were not hurt.

Event 13: August 9, 1979

The northeast side of Green Bay in Brown County was struck by the F1 tornado around 6:56 PM CST. There was no documentation on path length or width of the tornado.

Event 14: August 12, 1985

A large F2 tornado touched down around 6:13 PM CST six miles south of Marshfield in Wood County along highway B. The tornado traveled northeast across Highway EE and then slammed Auburndale. The tornado was on the ground for ten miles before the tornado dissipated in Auburndale around 6:30 PM CST. At its peak, the tornado was a massive 880 yards wide. Damage was estimated at \$5.5 million dollars. Fifty-eight dwellings and forty farms suffered damage. The Apache Gardens subdivision and the Wishkershen Trailer Park in Auburndale received substantial damage.

Event 15: August 12, 1985

The F0 tornado touched down one mile north of Richford in Waushara County around 7:30 PM CST. The tornado was 100 yards wide and traveled a half mile before dissipating. The tornado flattened 2 barns, damaged 5 homes and leveled many trees. Several sheds in Richford were destroyed and extensive window and roof damaged occurred.

Event 16: August 14, 1987

Considerable damage from the F1 tornado occurred one mile west of Menasha in Winnebago County between 5:40 and 5:43 PM CST. The tornado was 100 yards wide and traveled a quarter of a mile. Most of the damage occurred at a warehouse where siding and a roof were twisted and ripped away. Two 100 square foot cement slabs were also torn from the building. Trees and power lines were downed as well.

AUGUST TORNADO / WATERSPOUT GUIDE

Event 17: August 1, 1988

The F1 tornado touched one mile west of St. Germain in Vilas County around 6:52 PM CST. The tornado was 50 yards wide and traveled one mile. The tornado caused falling trees to damage cars and buildings one mile west of St. Germain. Another tornado (F0) was reported at 7:22 PM CST two miles southeast of Eagle River.

Event 18: August 1, 1988

The brief F0 tornado occurred 3 miles south of Hazelhurst in Oneida County around 6:20 PM CST. The tornado was 25 yards wide and only traveled a tenth of a mile. The tornado damaged some trees.

Event 19: August 1, 1988

The brief F0 tornado occurred 2 miles southeast of Eagle River in Vilas County around 7:22 PM CST. The tornado was 25 yards wide and traveled three tenths of a mile. The tornado damaged some trees.

Event 20: August 4, 1988

The F1 tornado developed one mile east of Reedsville in Manitowoc County around 2:35 PM CST. The tornado was 25 yards wide and traveled 4 miles before dissipating two miles north of Cato around 2:45 PM CST. Two barns, one shed and several trees were damaged by the tornado.

Event 21: August 29, 1992

The F3 tornado touched down east of Big Flats in Adams County around 7 PM CST. The tornado skipped along a five miles path, toppling trees and downing a 24 by 30-foot building. The killer tornado traveled a 28 miles path across Adams and Waushara Counties. The tornado was noted north of Coloma 7:10 PM just CST. The tornado then moved to Wautoma to just north of Redgranite and then to three miles southeast of Poy Sippi before dissipating around 7:55 PM CST. The hardest hit area was just south of Wautoma where a woman was killed when her mobile home was hurled several hundred feet into a parking lot. In addition, 30 people were injured, several critically. The tornado caused over ten million dollars in damage. All-together, forty-eight homes were destroyed, and ninety-five other structures sustained major damage, 289 received minor damage. 950 acres of trees were toppled by the tornadic winds.

Event 22: August 9, 1993

The F0 tornado touched down one mile north of Tripoli in Oneida County around 8:15 PM CST. The tornado was 50 yards wide and traveled three tenths of a mile. Little damaged was noted with this tornado.

Event 23: August 27, 1994

The F1 tornado formed in Hancock in Waushara County around 9:07 PM CST. The tornado was 75 yards wide and was on the ground for a mile and a half.

Event 24: August 27, 1994

The F1 tornado developed a mile and half south of Wausaukee in Marinette County around 9:41 PM CST. The tornado was 75 yards wide and was on the ground for 4 miles before dissipating three miles southeast of Wausaukee around 9:50 PM CST.

Event 25: August 7, 1996

The F2 tornado touched down six and a half miles north of Stratford in Marathon County around 1:45 AM CST, tearing the top portion of a home off, flattened a garage, and snapped off several large trees. The tornado continued east northeast for two and a half miles and reached a maximum width of 200 yards before dissipating two and a half miles north northwest of Fenwood around 1:49 AM CST. As the storm moved east, there was damage to a storage shed and thirty trees on a farm. A dozen of Ginseng shelters were thrown about. The tornado was not on the ground for the entire path.

AUGUST TORNADO / WATERSPOUT GUIDE

Event 26: August 7, 1996

The brief F1 tornado touched down one mile north of Stratford in Marathon County around 1:46 AM CST. The tornado was 100 yards wide and only traveled two tenths of a mile before dissipating 1.2 miles northeast of Stratford around 1:47 AM CST. The tornado snapped off numerous large trees, some of which fell on the top of homes. In addition: a barn was flattened while a semi-trailer was flipped over, and a car moved 75 feet.

Event 27: August 7, 1996

The F1 tornado touched down four tenths of a mile southwest of Shantytown in Manitowoc County around 2:19 AM CST. The tornado was 100 yards wide and traveled nearly a half mile to Shantytown before dissipating around 2:21 AM CST. The tornado tore a 100 yards swath through a cornfield. In Shantytown, the tornado tore the roof and garage off a home. Pieces of the roof were found one-quarter of a mile away from the home.

Event 28: August 23, 1998

A brief F0 tornado touched down near Menasha in Winnebago County at 3:22 PM CST. The tornado was 10 yards wide and traveled a tenth of a mile before dissipating. No damage was noted on the monthly storm report.

Event 29: August 23, 1998

Article written by National Weather Service Green Bay Staff

The F3 tornado struck a rural section of central Door County in Northeast Wisconsin during the evening of August 23, 1998. The multiple-vortex tornado was on the ground for nearly 14 minutes and carved a path of damage 5.1 miles long and 1/4 to over 1/2 mile wide at times. Damage was estimated at nearly \$7 million. The tornado, which moved off the waters of Green Bay, moved on shore three miles southwest of Egg Harbor at 5:30 PM CST, near Horseshoe Bay. Thousands of trees were snapped or uprooted as the tornado moved across the heavily wooded area in Murphy Park. The width of the damage path just after it came on shore was nearly one-half mile! The tornado then crossed Highway 42 at about 5:34 PM CST, severely damaging several houses and businesses. Damage in this area was rated F2 on the Fujita Scale of F0 to F5. About three minutes later the tornado ripped a two-story farmhouse off its foundation, dropping it 20 yards away. Based on the house's construction, damage in this area was rated F3. Nearby, a campground was hit, causing considerable damage there to trees and campers. Amazingly, only two people were injured. The tornado weakened shortly thereafter, lifting off the ground three miles west-northwest of Jacksonport at around 5:44 PM CST.

AUGUST TORNADO / WATERSPOUT GUIDE

AUGUST 23, 1998 DOOR COUNTY EF3 TORNADO



This photo was taken about the time the super cell thunderstorm was entering the Bay of Green Bay, off the Menominee, Michigan coast around 5:05 PM CST. The picture was taken 75 miles south of the storm. (Photograph © 1998 Michael Schardt)



This picture was taken around 5:15 PM CST, about the Time the supercell was producing a waterspout on the bay. The picture was taken 25 miles south of the storm. (Photograph © 1998 Ray Fulwiler)

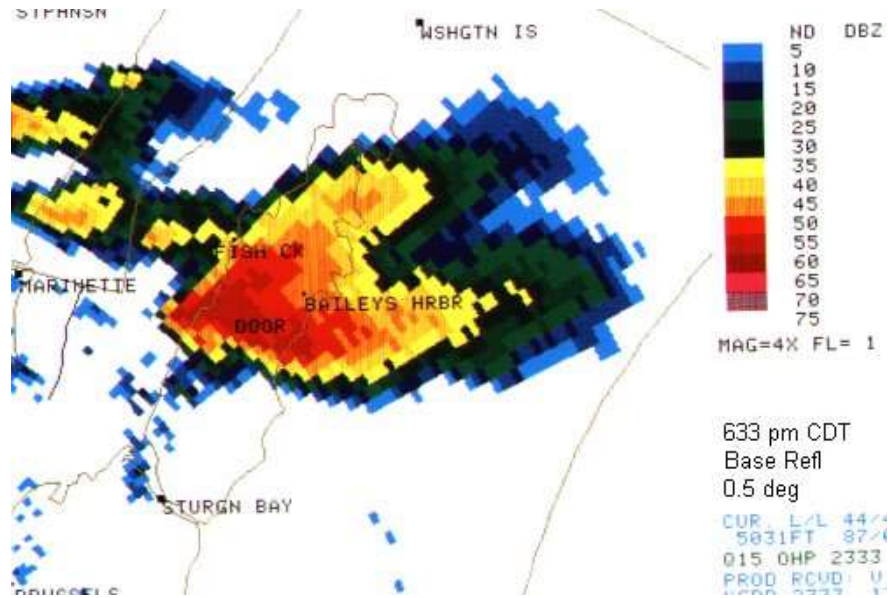


These photos were taken by Tom Janssen II at Murphy Park, which was hit by the tornado. The two on the left show the waterspout just after it developed, around 5:15 PM CST. The third picture was taken a little after 5:20 PM CST. The tornado was off the Door county shore over the Bay of Green Bay.

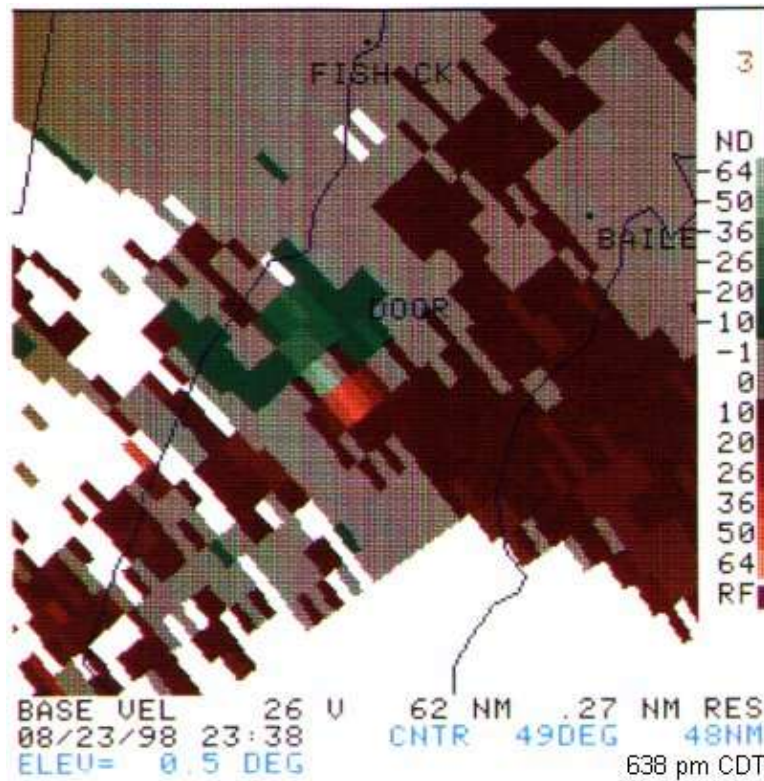


These pictures were taken by Gary Gridley, from Egg Harbor. The photo on the left was taken at 5:25 PM CST. The picture on the right was taken around 5:30 PM CST, as the tornado was coming onshore at Murphy Park.

AUGUST TORNADO / WATERSPOUT GUIDE



This image shows the supercell thunderstorm as viewed by the radar. The image was taken at 5:33 PM CST.



The second image shows the tornado vortex signature 9 minutes later (5:38 PM CST) near the time it was producing F3 damage. At this point, the radar measured 94 knot (108 mph) winds (ground relative) at about 4,100 feet above the ground.

AUGUST TORNADO / WATERSPOUT GUIDE

Door County Tornado

Damage



Here is a panoramic view looking east on Hwy 42. The damage width (which goes off the picture on both sides) was over ¼ mile wide as it passed over Hwy 42. (Photograph by Jeff Last)



This building (left picture) was on the south side of the tornado as it passed over Hwy 42 (Photograph by Jill Last, NWS Green Bay). There used to be a farmhouse and barn here (picture on right).

AUGUST TORNADO / WATERSPOUT GUIDE

Event 30: August 3, 1999

The F0 tornado briefly touched down 3 miles west of Pittsville in Wood County at 5:45 PM CST. The tornado was 10 yards wide and was on the ground for a tenth of a mile. The tornado knocked down trees 3 miles west of Pittsville.

Event 31: August 4, 1999

The F0 waterspout was reported by a vessel on the lake 21 miles east southeast of Sturgeon Bay in Door County at 4:05 PM CST. The crew of the vessel observed two other waterspouts about 21 miles east southeast of Sturgeon Bay. The U.S. Coast Guard relayed the report they received from the vessel on the lake.

Event 32: August 14, 2000

The brief F0 tornado touched down at Lake Tomahawk in Oneida County at 7:10 PM CST. The tornado was 25 yards wide and was on the ground a tenth of a mile. The tornado damaged trees in the Lake Tomahawk area.

Event 33: August 3, 2003

The F1 tornado touched down three tenths of a mile west of Potter in Calumet County around 1:59 PM CST. The tornado was 75 yards wide and was on the ground for nearly a half mile before dissipating two tenths of a mile east northeast of Potter around 2:03 PM CST. The tornado damaged several houses, outbuildings and trees around Potter.

Event 34: August 18, 2005

The F0 tornado touched down 6 miles west southwest of Wautoma in Waushara County at 5:32 PM CST. The tornado was 80 yards wide and was on the ground for two miles before dissipating 3.7 miles south of Wautoma at 5:36 PM CST. The tornado snapped off or uprooted many trees and caused damage to a few buildings and some farm equipment. A tree fell onto a large pole building, causing major damage to one of its sides. A porch at a residence was destroyed by a fallen tree limb while a portion of the metal roof of a barn was torn from it and thrown about 200 feet. An irrigation system was also damaged.

Event 35: August 18, 2005

The F0 tornado touched down 4 miles south southwest of New London in Waupaca County at 6:38 PM CST. The tornado was 40 yards wide and was on the ground for 1.2 miles before dissipating 3.4 miles southwest of New London at 6:41 PM CST. The tornado snapped large trees and a few buildings in its path. The tornado shifted a large barn, destroyed a small metal shed and threw it about a quarter of a mile. An outbuilding was overturned and thrown 30 to 40 feet into a stand of trees.

Event 36: August 18, 2005

The F0 tornado touched down four and a half miles west of Neenah in Winnebago County at 6:40 PM CST. The tornado was 50 yards wide and was on the ground for four miles before dissipating 2.6 miles northwest of Neenah at 6:48 PM CST. The tornado downed trees, stripping some siding from a home and destroying a corn crib.

Event 37: August 18, 2005

The F1 tornado developed 6 miles east northeast of Wrightstown in Brown County around 7:45 PM CST. The tornado was 100 yards wide and traveled one mile before dissipating 6.8 miles east northeast of Wrightstown at 7:49 PM CST. About 75 trees were downed or snapped and several structures along its path were destroyed. Two wooden garages were destroyed, and debris scattered for several hundred feet. The walls of a house that were under construction were blown down. A part of a steel roof of a commercial building was damaged. A heavy wooden bench was picked up from the front porch and thrown several hundred feet away behind the house. The tornado was part of a record tornado outbreak in Wisconsin.

AUGUST TORNADO / WATERSPOUT GUIDE

Event 38: August 18, 2005

The F1 tornado developed six and a half miles south southwest of Manitowoc in Manitowoc County at 8:35 PM CST. The tornado was 100 yards wide and traveled one and a half miles before dissipating 5.7 miles south of Manitowoc at 8:39 PM CST. The tornado damaged a farm, snapped, or uprooted around 50 large trees while several hay wagons and trailers were overturned. A concrete silo was destroyed and another damaged. The roof of a barn sustained extensive damage. Part of the barn and silo were found in trees a third of a mile away. The tornado was part of a record tornado outbreak in Wisconsin.

Event 39: August 20, 2010

The EF1 tornado touched down 2 miles southeast of Greenleaf in Brown County at 3:20 PM CST. The tornado traveled just over 1.25 miles and was 75 yards wide before dissipating 2.7 ESE of Greenleaf at 3:22 PM CST. When the tornado initially touched down, several trees were snapped and uprooted. The tornado then destroyed a relatively new barn constructed of metal wall panels and roof. Pieces of the roof and wall were strewn over 100 yards from the site. About 50 to 100 yards on either side of the damaged barn small outbuildings and trees were untouched. The tornado continued east-northeast to another farm and heavily damaged a metal building which contained hay bales. Large parts of the metal roof were thrown over 200 yards. Numerous trees along the patch were snapped or uprooted. Estimated maximum winds were 90 mph. The tornado dissipated just north of the Holland State Wildlife Area.

Event 40: August 19, 2011

The EF1 tornado quickly developed northwest of the city of Wausaukee during the late afternoon and moved southeast for nearly eight miles before dissipating. The twister touched down near Long Lake, snapping or uprooting hundreds of trees as it moved towards Wausaukee. A mobile home near Long Lake was heavily damaged by fallen trees, but the occupants escaped without injury. As the tornado moved into Wausaukee, it leveled another mobile home killing a 46 year old male. Two additional buildings on the property sustained damage including a house that lost part of its roof. Two semi-trailers on the property were blown over. The tornado continued southeast, damaging a baseball field and hundreds of additional trees on the east side of Wausaukee. The tornado reached the Menominee River and briefly crossed into Upper Michigan before moving back into Wisconsin and dissipating near Highway 180. One tree fell on a home near Deer Lane Road.

Event 41: August 23, 2011

The EF0 tornado was witnessed by local law enforcement. The tornado touched down for less than 10 seconds in a corn field. A couple of stalks of corn were thrown in the air, but no damage was reported. The EF0 tornado was estimated to have winds around 60 mph.

Event 42: August 23, 2011

The EF0 tornado touched down near Briarton shortly before 6 PM CST along Shady Road in Shawano County just north of the Outagamie County line. Tall grass and a hay field were flattened in a cyclonic pattern. In addition, about a dozen trees had snapped limbed. Peak winds were estimated at 65 to 70 mph. The average path width was 50 yards.

Event 43: August 23, 2011

The EF0 tornado touched down less than a mile northeast of Sherwood at 8:05 PM CST. The EF0 tornado toppled two trees that damaged the roof of a house and snapped or uprooted six pine trees near Highway M. The tornado continued east-southeast moving over a swamp. Swirl marks were seen in the thick swamp grass. The tornado then hit a farm on Kesler Road. Two old barns were heavily damaged. Peak winds were estimated at 85 mph with an average width of 75 yards.

Event 44: August 9, 2012

The EF0 waterspout was reported by a trained spotter over Lake Michigan six miles south of Kewaunee between 12:10 PM and 12:20 PM CST. An upper-level trough of low pressure rotated through Wisconsin, resulting in numerous showers and thunderstorms. Cold air aloft associated with the trough, coupled with the warm waters of Lake Michigan provided favorable conditions for the development of waterspouts.

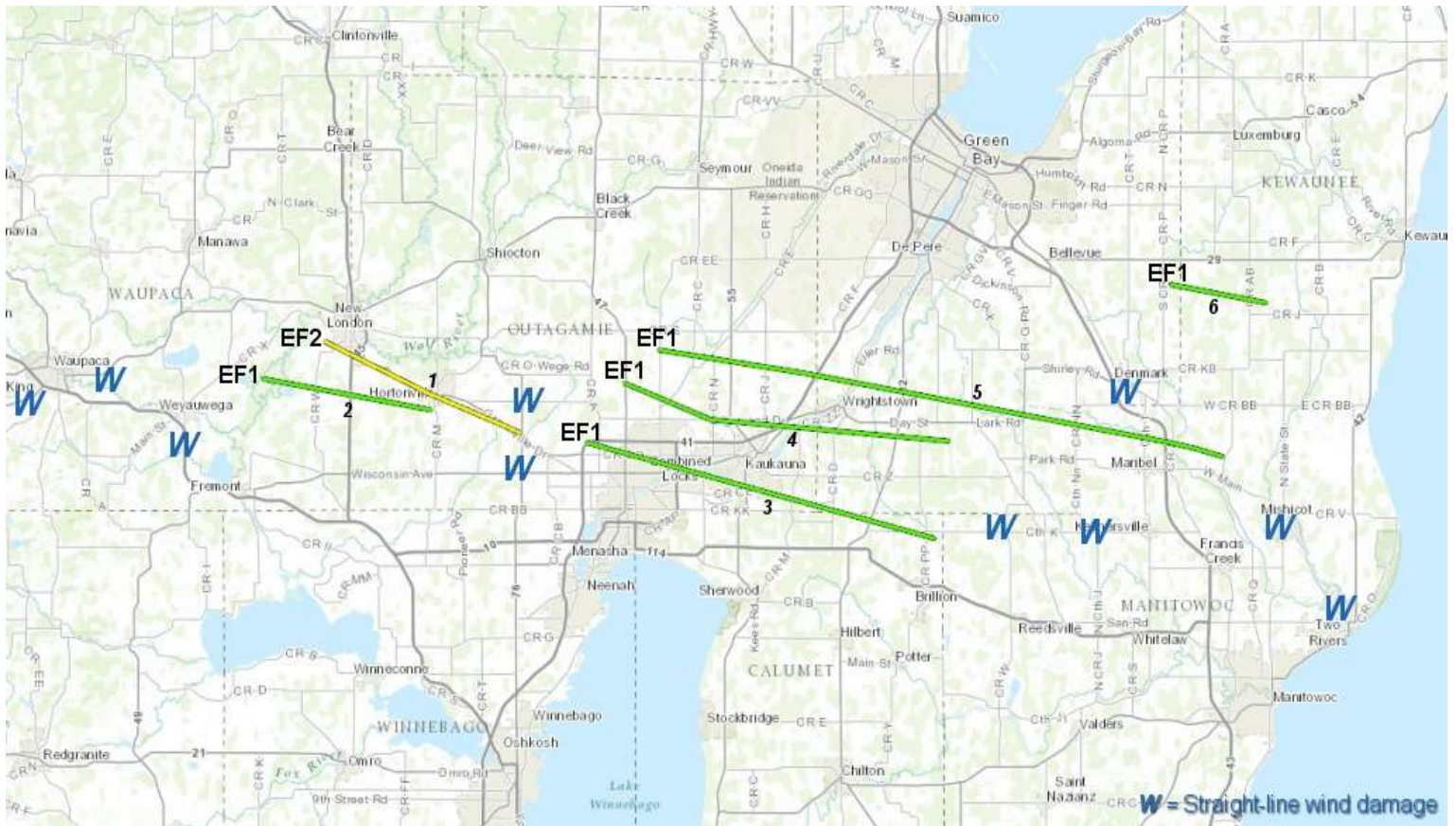
AUGUST TORNADO / WATERSPOUT GUIDE

Event 45: August 9, 2012

The EF0 waterspout was reported by a trained spotter over Lake Michigan six miles south of Kewaunee between 12:25 PM and 12:35 PM CST. An upper-level trough of low pressure rotated through Wisconsin, resulting in numerous showers and thunderstorms. Cold air aloft associated with the trough, coupled with the warm waters of Lake Michigan provided favorable conditions for the development of waterspouts.

Event 46-51: August 6-7, 2013

Rare Late Evening / Early Morning Tornadoes on August 6-7, 2013



AUGUST TORNADO / WATERSPOUT GUIDE

Event 46: August 6, 2013

The first of six late night tornadoes to strike Northeast Wisconsin on this date, The EF0 tornado touched down four miles north northeast of Partridge Lake in Waupaca County at 11:22 PM CST. The tornado was traveling at a rate of 60 to 70 mph. The tornado hit a campground, blowing several camper trailers over. Two people sustained minor injuries at the campground. Over one hundred trees were snapped or uprooted along the path in Waupaca County. The tornado moved into Outagamie County about 3.1 miles south of New London at 11:26 PM CST. The tornado damaged or uprooted trees as it moved across Outagamie County. Based on radar analysis, the circulation of this tornado may have merged with the other tornado that was occurring concurrently in the county near Hortonville. The tornado traveled 9.8 miles before dissipating eight tenths of a mile west southwest of Hortonville at 11:30 PM CST. The maximum width of the tornado in Outagamie and Waupaca Counties was 125 yards, with an average width of 75 yards in both counties.

Event 47: August 6, 2013

The second of six late night tornadoes to strike Northeast Wisconsin on this date, the EF2 tornado touched down 1.2 miles west of New London in Waupaca County at 11:24 PM CST. The tornado was traveling at a rate of 60 to 70 mph. The tornado struck a church (figure 1 below), causing severe damage. A large portion of the roof collapsed, causing failure to two walls. A wall on the new portion of the church was pushed in. In addition, hundreds of trees were snapped or uprooted. Several homes along the path sustained damage, mainly from fallen trees. The average path width in Waupaca County was 100 yards with a maximum width of 175 yards. The tornado now an EF1 entered Outagamie County at 11:25 PM CST a little over a mile southeast of New London, damaging or uprooting hundreds of trees along the path. Several homes in a two-block area of Hortonville were damaged (roof and siding) by falling trees. The average path width was 100 yards with a maximum width of 175 in Outagamie County. The tornado traveled 13.1 miles before dissipating four tenths of a mile west southwest of Greenville.



Figure 1: Church (southeast New London) damaged by a tornado. Peak winds were estimated at 115 to 120 mph.

AUGUST TORNADO / WATERSPOUT GUIDE

Event 48: August 6, 2013

The third of six late night tornadoes to strike Northeast Wisconsin on this date, the EF1 tornado touched down four tenths of a mile west of Mackville in Outagamie County at 11:38 PM CST. The tornado was traveling at a rate of 60 to 70 mph. The tornado caused a barn to collapse, and heavily damaged a boat showroom in Little Chute. Another barn lost part of its roof northwest of Kaukauna. Damage to trees was sporadic as it moved through Outagamie County. The maximum width of the tornado in Outagamie County 175 yards, with an average width of one hundred yards. The tornado moved into southern Brown County, about two miles southwest of Wrightstown around 11:48 PM CST. In Brown County, the tornado uprooted or snapped dozens of trees as it moved east, just south of Greenleaf. A house lost an attached garage when winds blew in the garage door and caused a large portion of the garage roof to lift off. The walls of a nearby building collapsed. The maximum width of the tornado in Brown County was 175 yards and average width was 125 yards. The tornado traveled 19.2 miles before dissipating 2.7 miles west of Morrison at 11:53 PM CST.

Event 49: August 6, 2013

The fourth of six late night tornadoes to strike Northeast Wisconsin on this date, the EF1 tornado touched down three and a half miles east of Greenville in Outagamie County at 11:38 PM CST. The tornado was traveling at a rate of 60 to 70 mph as it moved across northern portions of Appleton, Kimberly, and Kaukauna. The tornado caused some roof damage to the Northland Mall and caused roof and window damage to two small retail buildings. The storm then knocked over four wood electrical poles and uprooted or heavily damaged hundreds of trees in a nearby neighborhood. Although houses in the area sustained relatively minor wind directly, fallen trees caused considerable collateral damage to roofs, siding and vehicles. The maximum width of the tornado in Outagamie County was 150 yards, with an average width of 125 yards. The EF1 tornado entered Brown County a little over a mile west of Holland around 11:49 PM CST. A few trees were knocked over by the tornado. The average path width in Brown County was 150 yards. The EF1 tornado moved into Calumet County 1.6 miles northwest of Forest Junction around 11:50 PM CST. In Calumet County, the tornado damaged about three dozen trees. Two metal truss towers collapsed under the weight of several high voltage power lines which were likely moving in unison as their resonance frequency was reached. Engineers inspected the damaged estimated winds around 100 mph. The maximum width in Calumet County was 175 yards with an average width of 125 yards. The tornado traveled 20.7 miles before dissipating a little over two and a half miles north northeast of Brillion around 11:52 PM CST.

Event 50: August 6, 2013

The fifth of six late night tornadoes to strike Northeast Wisconsin on this date, the EF1 tornado touched down 2.7 miles east northeast of Mackville in Outagamie County at 11:40 PM CST. The tornado was traveling at a rate of 60 to 70 mph as it moved across the Fox Valley. The tornado caused significant damage to several outbuildings and barns and flattened sections of mature corn fields. The roof of a power substation was damaged. The maximum path width was 200 yards, with an average width of 150 yards. The tornado now an EF0 moved into Brown County just under two miles northwest of Wrightstown near Highway 41 around 11:48 PM CST. The tornado first hit the Apple Creek Campground, snapping fifty trees, and knocking over two camping trailers. As the tornado moved across southern Brown County, at least seventy homes sustained at least minor damage, many from fallen trees. A large free-standing garage was heavily damaged when the tornadic winds blew in two garage doors, causing the roof to be ripped off. The maximum width of the tornado in Brown County was 250 yards, with an average width of 175 yards. The tornado moved into Manitowoc County 4.1 miles northwest of Rosencrans around 12:01 AM CST. The tornado strengthened to an EF1 in Manitowoc County. The tornado damaged several outbuildings and a roof of a barn. A 110 year old stone structure at the Maribel Caves County Park was knocked over by the strong winds. The damage survey revealed the tornado ended a couple miles east of Maribel, but straight-line wind damaged continued into the east part of the county. The tornado in Manitowoc County has a maximum width of 250 yards and average width of 125 yards. The tornado traveled thirty-three miles across three counties before dissipating.

AUGUST TORNADO / WATERSPOUT GUIDE

Event 51: August 7, 2013

The last tornado of the night to strike Northeast Wisconsin on this date, the EF1 tornado touched down a half mile south southeast of Henrysville in Brown County around 12:05 AM CST. The tornado was traveling at a rate of 60 to 70 mph as it moved across the region. A couple dozen trees were damaged or uprooted. In Brown County, the maximum width of the tornado was one hundred yards with an average width of seventy-five yards. The EF1 tornado moved into Kewaunee County about three miles southwest of Pilsen around 12:06 AM CST. The tornado caused the walls and roof of a barn to collapse and damaged two silos. The tornado also uprooted several dozen trees along its path. In Kewaunee County, the maximum width of the tornado was 100 yards with an average width of seventy-five yards. The tornado traveled 5.6 miles before dissipating one mile northeast of Stangelville around 12:10 AM CST.

Event 52: August 18, 2014

The EF0 tornado developed around 3:23 PM CST, causing minor damage as it moved east near Shady Lane a little over three miles northeast of Winchester in northern Winnebago County. The weak tornado caused two single wood power poles to partially lean in saturated soil and knocked over a few trees and limbs. Swirl marks could be seen in a field of tall grass. The tornado was not in contact with the ground during the entire path length (a little over two miles) before ending around 3:25 PM CST. The maximum width of the tornado was 50 yards with estimated winds of 65 to 75 mph.

Event 53: August 4, 2016

The EF1 tornado touched down a little over five miles of Colby (1.3 NNE Cherokee) in Marathon County around 10:20 AM CST. The tornado was 250 yards wide and affected sixteen homesteads and farms. One barn collapsed and three others sustained at least minor damage. Five homes sustained roof damage and several sheds were damaged or destroyed. A church steeple was damaged, and several dozen trees were snapped or uprooted. The average path wide was 125 yards with a maximum width of 250 yards. The tornado traveled just under four and a half miles before dissipating 4.4 miles south southwest of Stratford around 10:26 AM CST.

Event 54: August 20, 2016

The EF0 tornado touched down on the west side of Kewaunee in Kewaunee County around 9:03 AM CST. The tornado was 125 yards wide with about 100 trees sustaining some damage. Several trees were uprooted to the saturated ground. Several homes on the west side of Kewaunee had shingle or siding damage. Also, a baseball dugout at a school was blown down. The tornado traveled seven tenths of a mile before dissipating 1.1 miles west of downtown Kewaunee around 9:06 AM CST.

Event 55: August 28, 2018

The EF1 tornado touched down around 3:34 PM CST just over two miles north-northwest of Kiel in Manitowoc County. The tornado developed near the Manitowoc/Calumet County line near Meggers Road which destroyed a barn and produced sporadic tree damage. The tornado was 75 yards wide and traveled near a mile before dissipating at 3:35 PM CST just over two miles north of Kiel.

Event 56: August 7, 2019

The EF0 tornado touched down around 4:48 PM CST just over two miles southeast of downtown Green Bay in Brown County. Three power poles sustained damage and a business sign was heavily damaged in Green Bay. The tornado continued southeast and damaged at least 100 trees along the path. A poorly constructed carport lost part of its metal roof at an apartment building and a nearby house lost a couple of shingles. The tornado was 90 yards wide and traveled just over six miles before dissipating around 4:57 PM CST nearly two miles north of Pine Grove.

Event 57: August 8, 2021

The brief EF1 tornado touched down at 2:52 PM CST in Pleasant Lake, or 3.7 miles south-southwest of Coloma in Waushara County. The tornado moved north for nearly 3.5 miles before dissipating 2:58 PM CST just over a mile west of Coloma. The tornado produced damage to trees and houses. The total path length was estimated nearly 3.5 miles long with a maximum width of 350 yards. Peak winds were estimated at 90 to 95 mph.

AUGUST TORNADO / WATERSPOUT GUIDE

Event 58: August 10, 2021

The EF1 tornado touched down at 4:58 PM CST northwest of Black Creek, or 1.3 miles southeast of Stinson in Outagamie County. The tornado continued southeast, damaging trees and to the siding and roof of a house before dissipating at 5:11 PM CST. The total path length was estimated just over 2 miles with a maximum width of 40 yards. Peak winds were estimated to be around 90 mph.

Event 59: August 11, 2021

The EF0 tornado touched down at 1:08 PM CST one miles southwest of Angelica in Shawano County. The tornado uprooted trees and damaged an outbuilding before moving east and dissipating in a nearby field at 1:09 PM CST. The total path length was estimated at nearly four tenths of a mile and was 41 yards wide. Peak winds were estimated at 68 mph.

Event 60: August 11, 2021

The EF0 tornado touched down at 1:14 PM CST nearly one mile northwest of Pulaski in Brown County. The tornado moved east across the north side of Pulaski then dissipated about a mile and a half east of Pulaski around 1:22 PM CST. The tornado damaged trees. The total path length was estimated to be near 2.3 miles long with a maximum width of 75 yards. Peak winds were estimated around 70 mph.

