

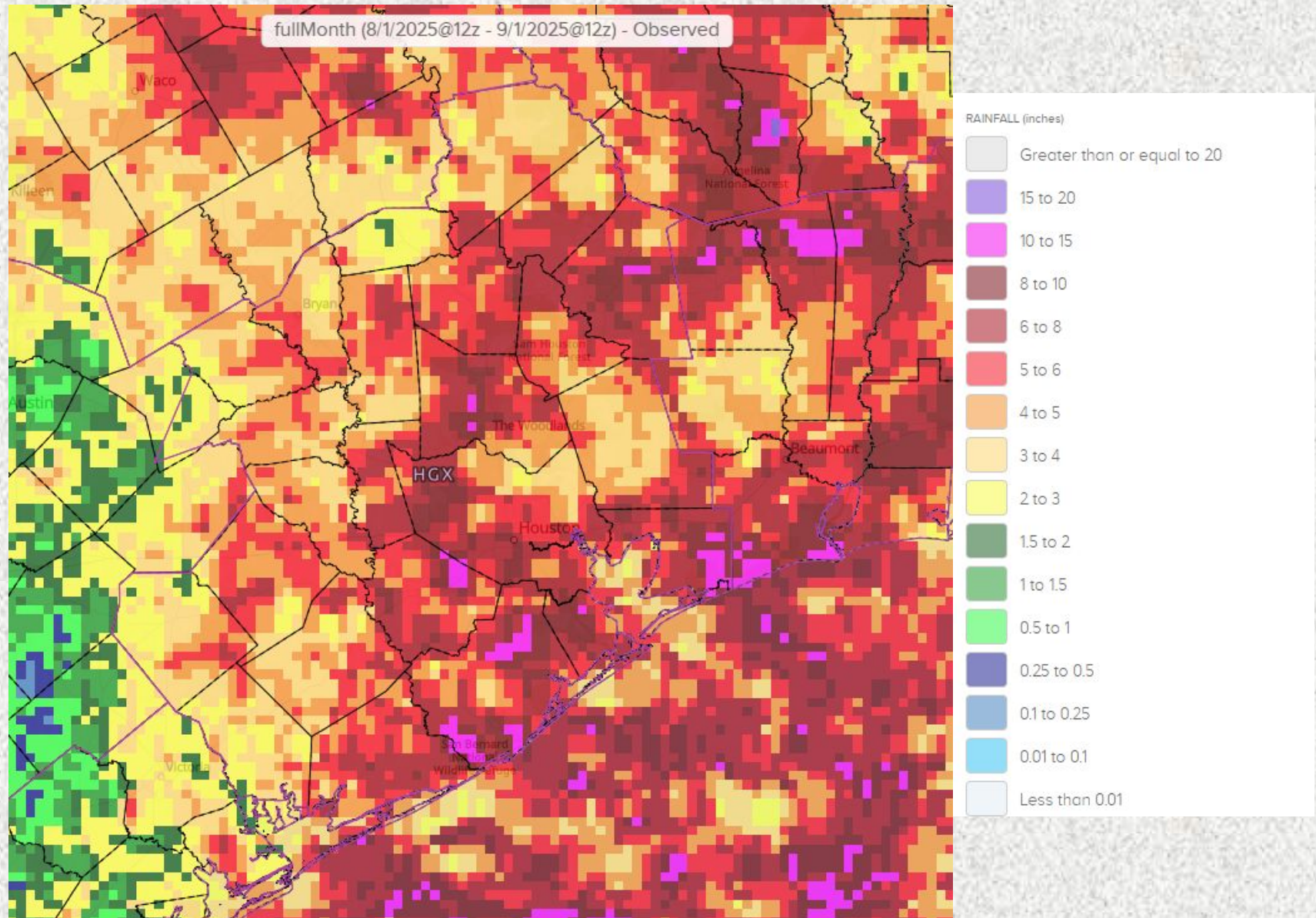
# NWS Houston/Galveston Monthly Hydrologic Report August 2025

**Produced by: Cameron Batiste**

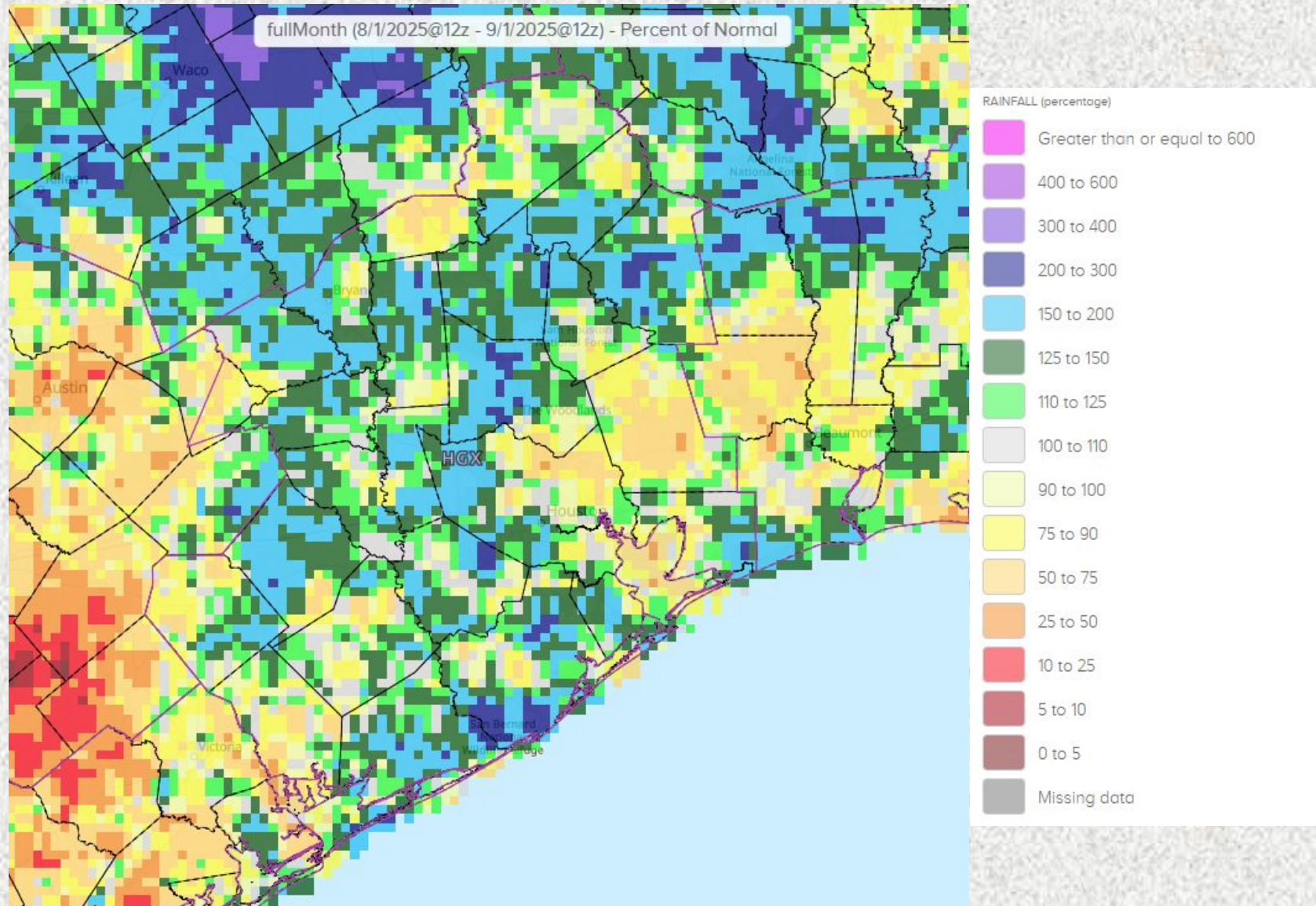
**Date: 9/4/2025**

August was another month where Southeast Texas continued to receive numerous rounds of beneficial rainfall, which led to bouts of street flooding at times. Most of the area received 3-6" with locally higher totals. Majority of the month was drought free for the area, but towards the end of the month a small area of D0 (abnormally dry) conditions popped up in the Piney Woods region.

# Monthly Precipitation

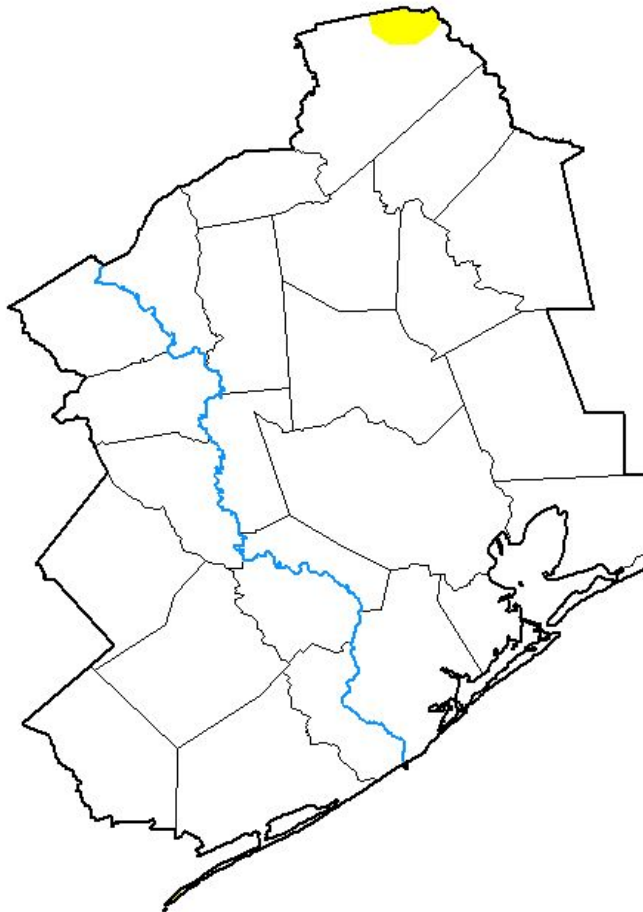


# Monthly Percent of Normal Precipitation



# U.S. Drought Monitor

## U.S. Drought Monitor Houston/Galveston, TX WFO



**August 26, 2025**

*(Released Thursday, Aug. 28, 2025)*

Valid 8 a.m. EDT

*Drought Conditions (Percent Area)*

	None	D0-D4	D1-D4	D2-D4	D3-D4	D4
<b>Current</b>	99.38	0.62	0.00	0.00	0.00	0.00
<b>Last Week</b> <i>08-19-2025</i>	99.98	0.02	0.00	0.00	0.00	0.00
<b>3 Months Ago</b> <i>05-27-2025</i>	84.35	15.65	7.46	0.92	0.00	0.00
<b>Start of Calendar Year</b> <i>01-07-2025</i>	28.59	71.41	37.60	0.00	0.00	0.00
<b>Start of Water Year</b> <i>10-01-2024</i>	10.34	89.66	5.13	0.00	0.00	0.00
<b>One Year Ago</b> <i>08-27-2024</i>	80.95	19.05	0.00	0.00	0.00	0.00

Intensity:

None	D2 Severe Drought
D0 Abnormally Dry	D3 Extreme Drought
D1 Moderate Drought	D4 Exceptional Drought

*The Drought Monitor focuses on broad-scale conditions. Local conditions may vary. For more information on the Drought Monitor, go to <https://droughtmonitor.unl.edu/About.aspx>*

Author:

Brad Rippey  
U.S. Department of Agriculture

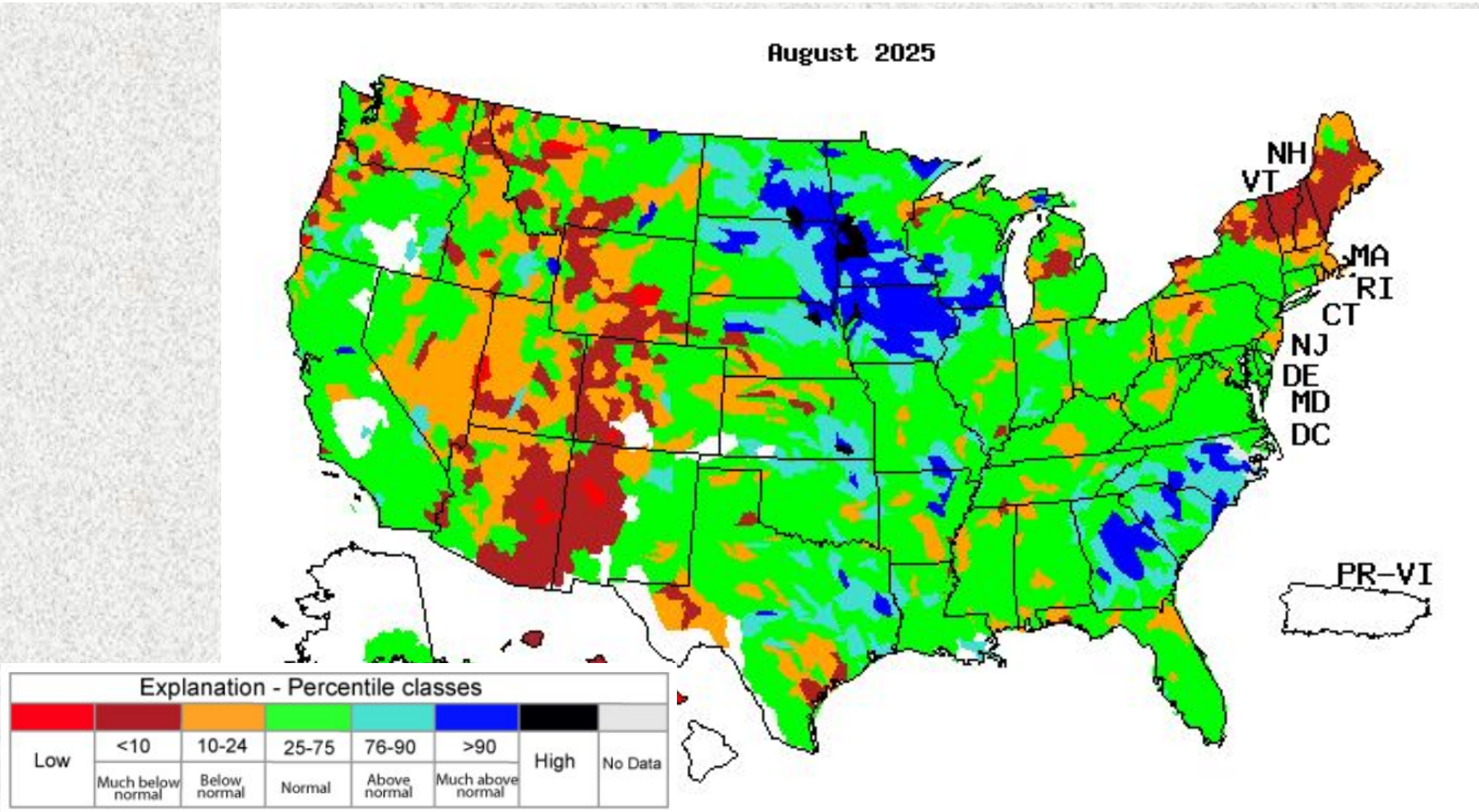


[droughtmonitor.unl.edu](https://droughtmonitor.unl.edu)

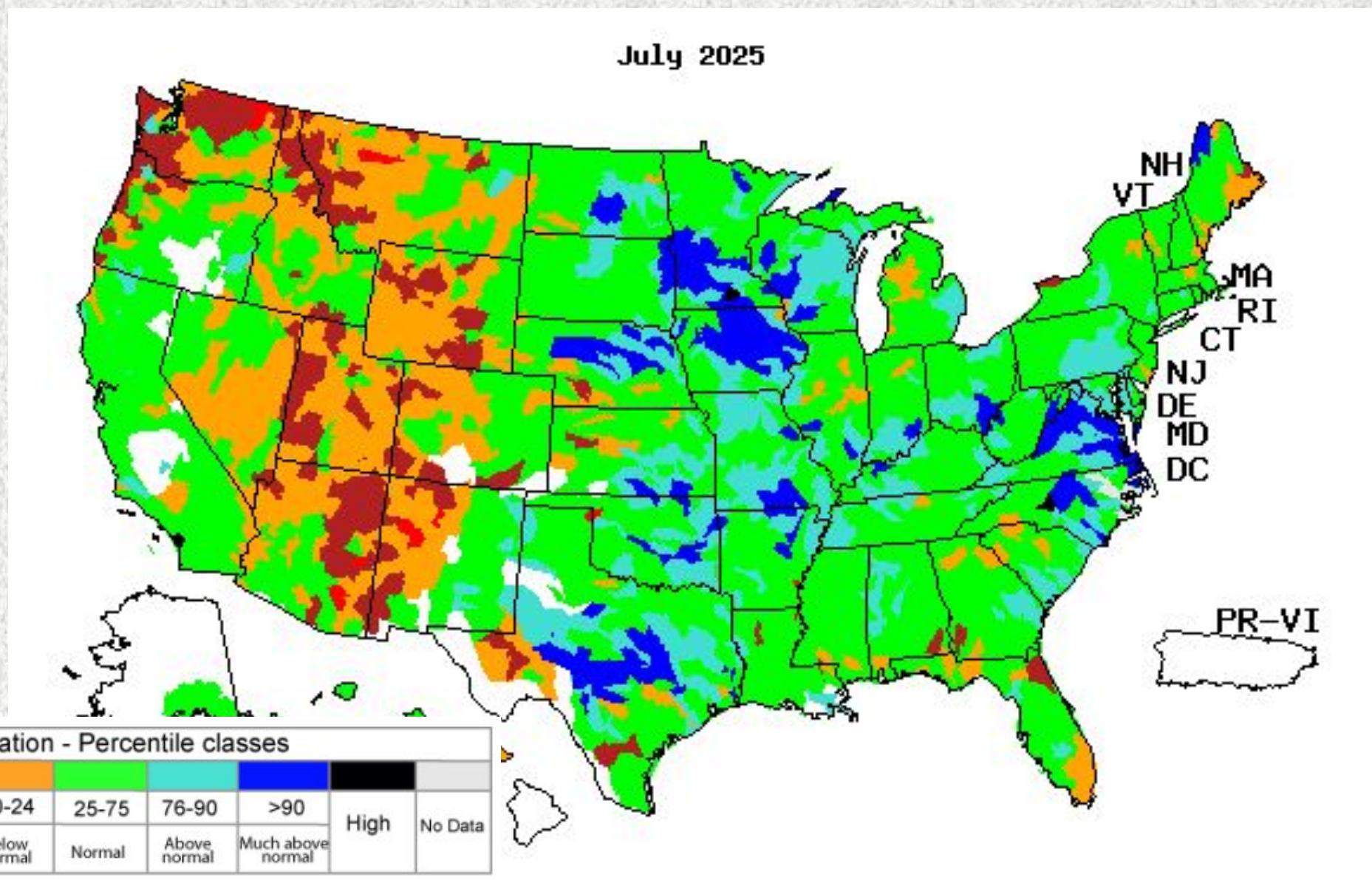
# River Flooding

River and Station	Flood Stage (feet)	Crest Stage (feet)	Crest Date
None			

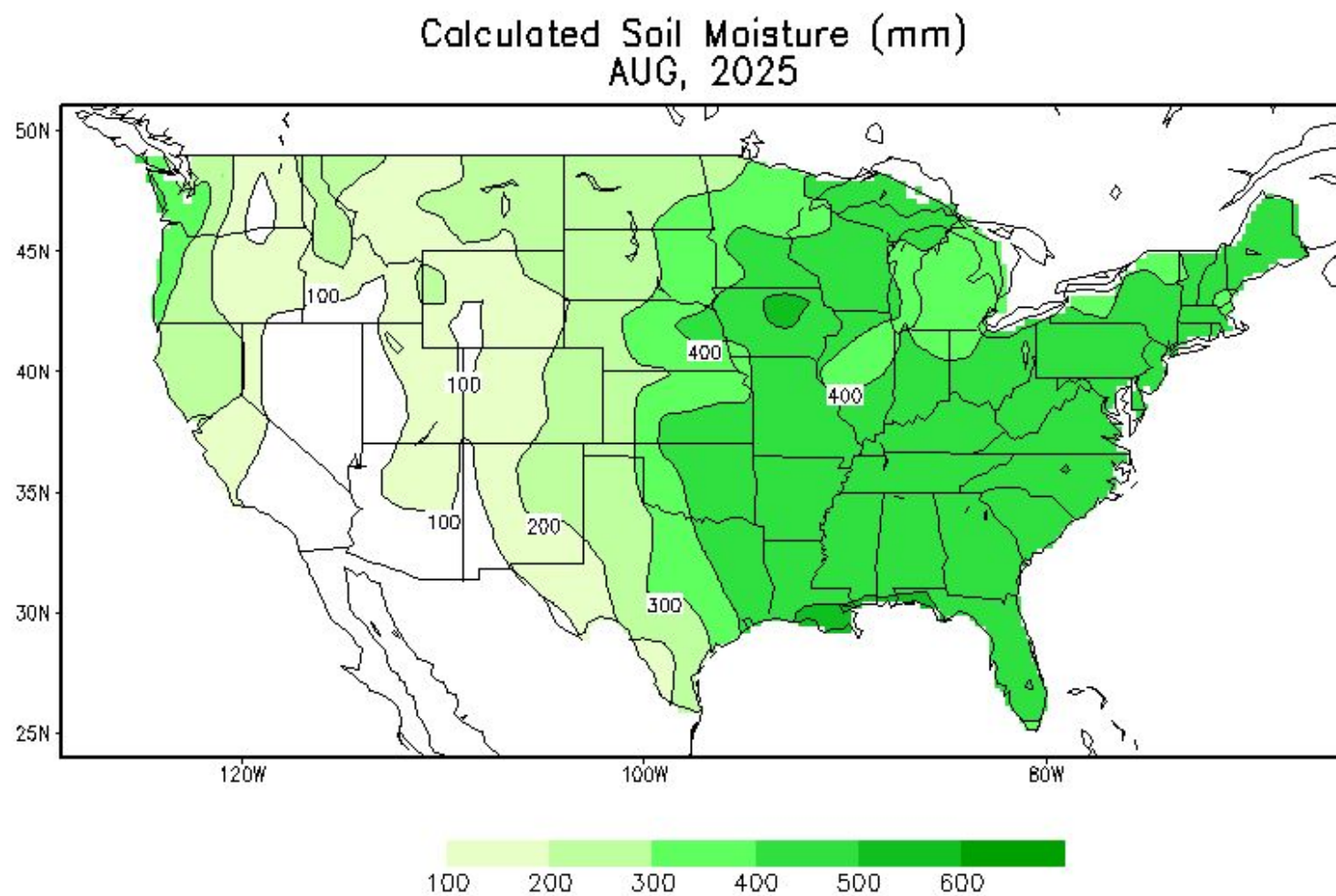
# Monthly Average Streamflow



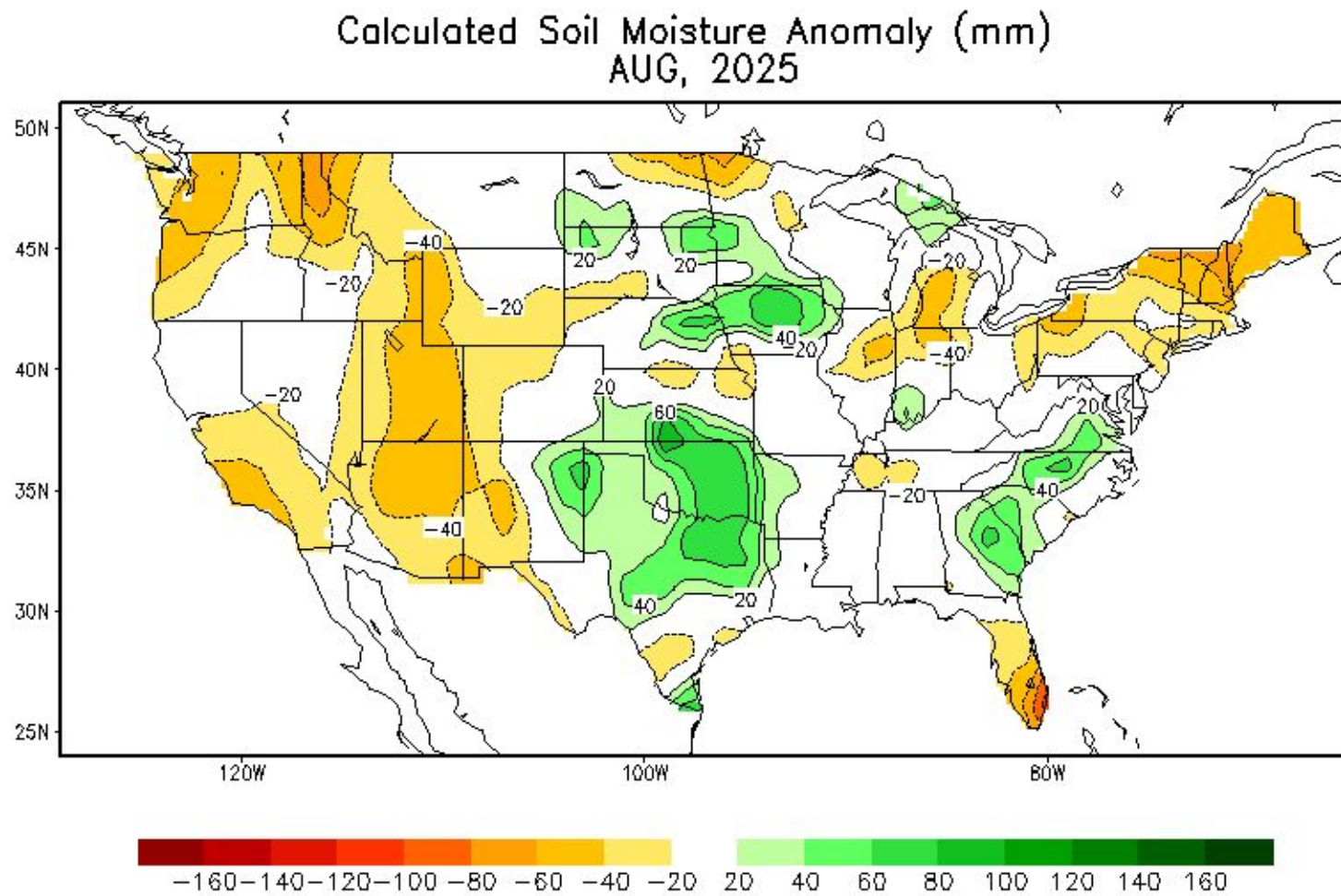
# Previous Monthly Average Streamflow



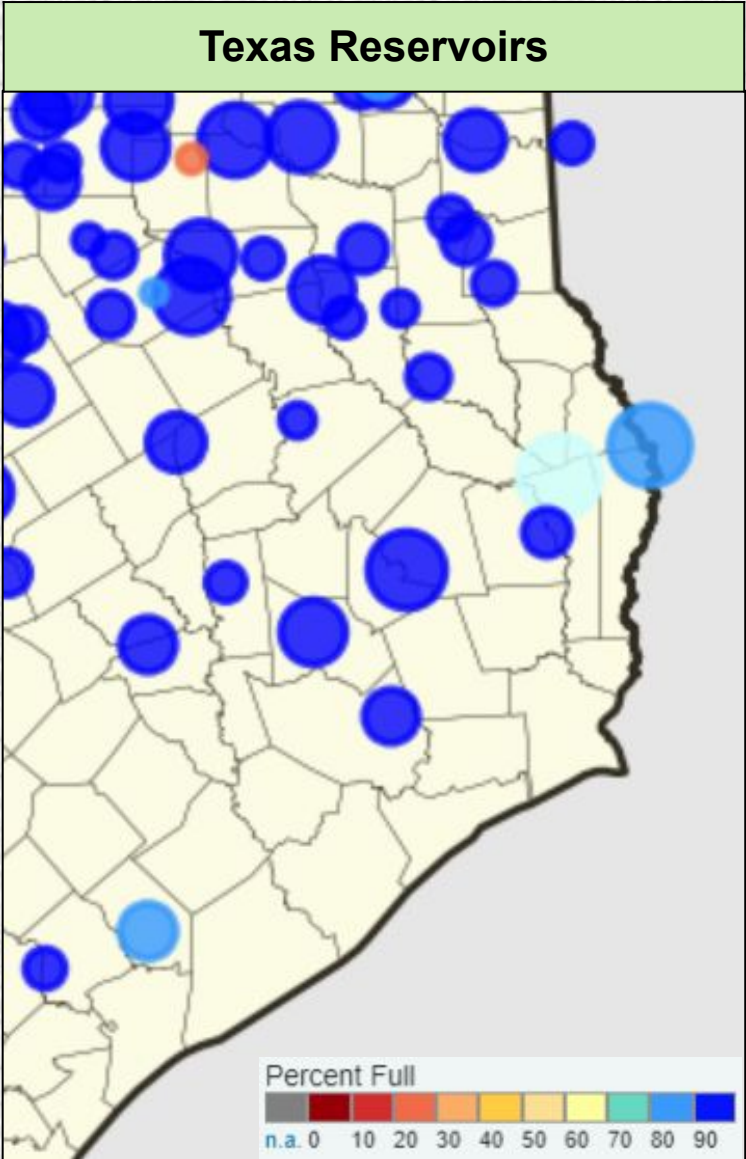
# Soil Moisture



# Soil Moisture Anomaly



# Reservoir Status



Reservoir	Percent Full Conservation Storage
Houston County Lake	100.0%
Lake Livingston	100.0%
Lake Conroe	100.0%
Lake Houston	100.0%
Gibbons Creek Reservoir	100.0%
Lake Somerville	97.2%
Lake Texana	87.0%

*Data added on: September 4, 2025 at 3:00 pm CDT*

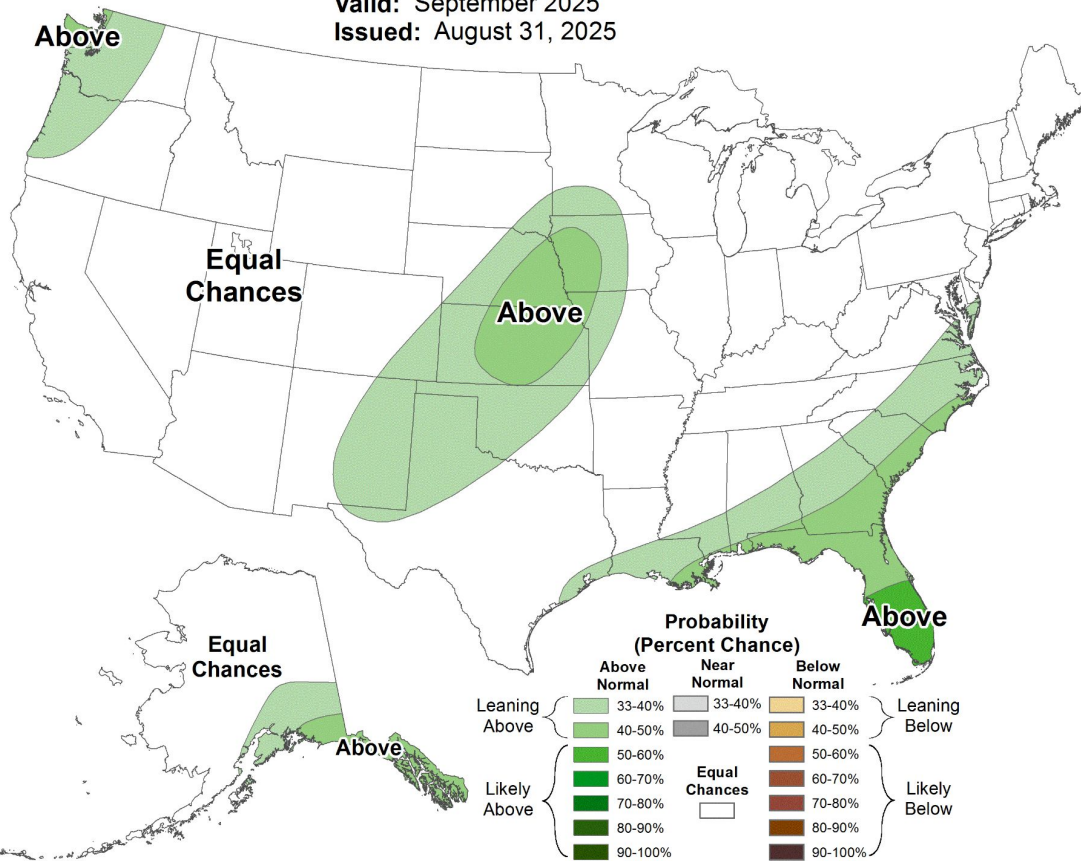
# Precipitation Outlooks



## Monthly Precipitation Outlook



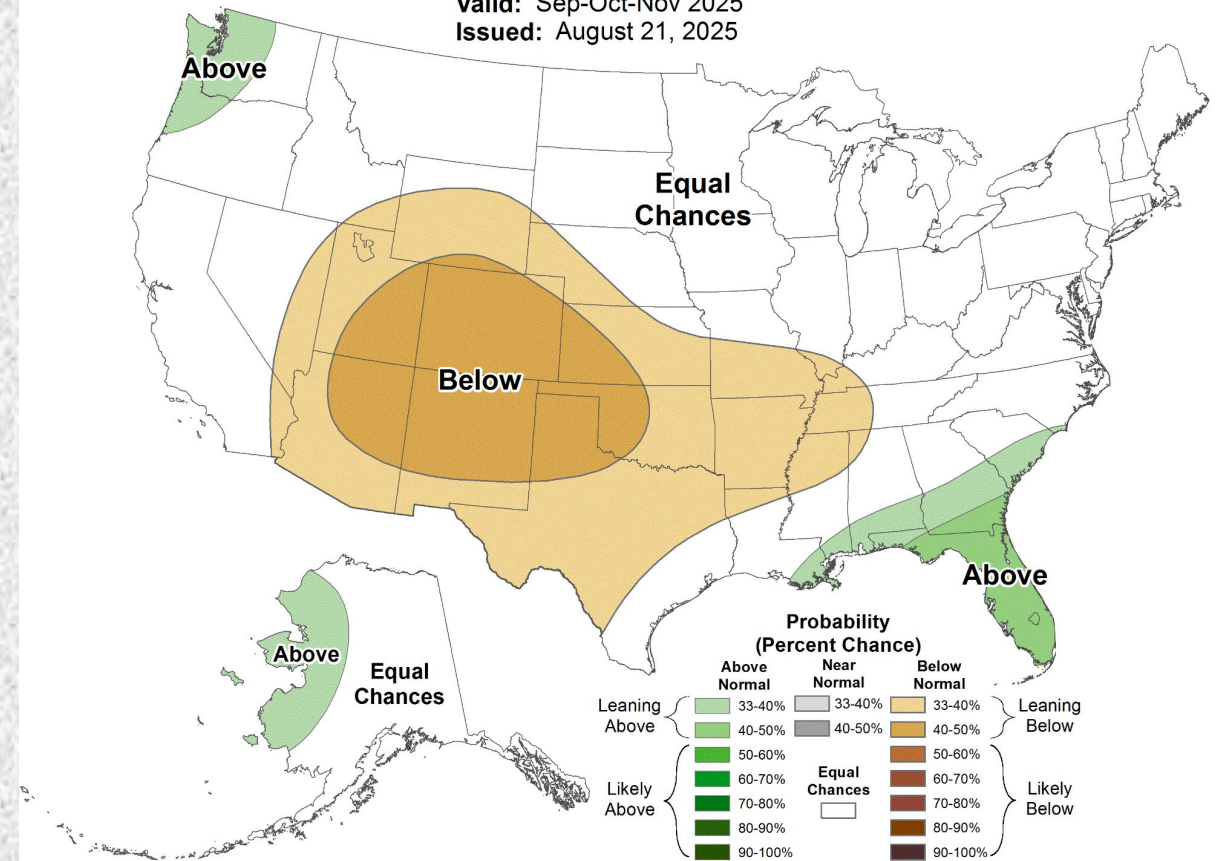
Valid: September 2025  
Issued: August 31, 2025



## Seasonal Precipitation Outlook



Valid: Sep-Oct-Nov 2025  
Issued: August 21, 2025



# Flood Products Issued

Product	Number Issued
Flash Flood Watch (FFA)	0
Flash Flood Warning (FFW)	1 (ETN: 013)
Flash Flood Statement (FFS)	1 (ETN: 013)
Areal Flood Warning	0
River Flood Warnings (FLW)	0
River Flood Statements	7
Flood Advisories (FLS)	23 (ETN: 090-112)
Probabilistic Hydrologic Outlook (ESF)	6