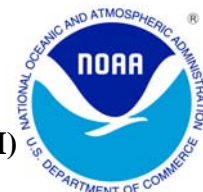




# JULY 2006 LOCAL CLIMATOLOGICAL DATA

## NOAA, National Climatic Data Center

**HOUSTON, TX**  
**G BUSH INTERCONTINENTAL AP/HOUSTON AP (KIAH)**  
 Lat:29° 59'N Long: 95° 21'W Elev (Ground) 94 Feet  
 Time Zone : CENTRAL WBAN: 12960 ISSN#: 0198-5094



Date 1	Temperature °F						Deg Days BASE 65°		WEATHER 10	SNOW/ICE ON GND(IN)		PRECIPITATION ON GND(IN)		PRESSURE (INCHES OF HG)		WIND SPEED = MPH DIR = TENS OF DEGREES								Date 24
	MAXIMUM 2	MINIMUM 3	AVERAGE 4	DEP FROM NORMAL 5	AVERAGE DEW PT 6	AVERAGE WET BULB 7	HEATING 8	COOLING 9		0600 LST 11	1200 LST 12	2400 LST 13	2400 LST 14	AVERAGE STATION 15	AVERAGE SEA LEVEL 16	RESULTANT SPEED 17	RES DIR 18	AVERAGE SPEED 19	MAXIMUM					
																			5-SEC 20		2-MIN 22			
01	88	74	81	-2	73	75	0	16	TSRA RA BR HZ	0		0.0	0.04	29.97	30.09	1.7	07	3.8	18	14	17	15	01	
02	86	74	80	-3	71	74	0	15	TS BR	0		0.0	0.00	29.99	30.11	6.0	11	7.3	22	13	17	14	02	
03	82	75	79	-4	72	74	0	14	TS RA BR	0		0.0	0.68	29.96	30.08	5.5	11	6.7	18	12	16	11	03	
04	85	74	80	-3	74	75	0	15	TS TSRA RA FG BR	0		0.0	0.16	29.89	30.02	4.7	12	5.9	38	16	30	17	04	
05	86	75	81	-2	74	75	0	16	TS TSRA RA BR	0		0.0	0.88	29.85	29.96	4.0	12	5.9	16	13	14	13	05	
06	90	74	82	-1	73	76	0	17	TSRA RA FG+ BR	0		0.0	0.53	29.91	30.01	5.7	07	8.0	29	05	25	05	06	
07	90	76	83	0	72	75	0	18		0		0.0	0.00	29.96	30.07	7.5	05	7.8	17	06	15	06	07	
08	91	76	84	1	73	76	0	19	TS RA BR HZ	0		0.0	T	29.93	30.05	2.7	08	5.2	26	12	23	12	08	
09	90	75	83	0	74	76	0	18	TS RA	0		0.0	T	29.88	29.99	3.9	16	4.8	21	15	16	14	09	
10	93	76	85	2	73	76	0	20	RA	0		0.0	T	29.86	29.97	6.6	18	6.9	21	15	18	16	10	
11	94	76	85	2	73	77	0	20		0		0.0	0.00	29.91	30.01	7.9	17	7.9	18	16	15	16	11	
12	94	74	84	1	73	77	0	19	BR	0		0.0	0.00	29.91	30.03	5.5	17	6.3	20	13	16	13	12	
13	95	75	85	2	73	77	0	20		0		0.0	0.00	29.89	30.01	5.1	17	5.8	24	15	21	15	13	
14	91	76	84	1	73	76	0	19	RA	0		0.0	T	29.91	30.02	4.3	17	5.0	18	17	15	15	14	
15	94	76	85	1	72	76	0	20		0		0.0	0.00	29.96	30.07	2.2	17	3.7	15	12	13	11	15	
16	96	77	87	3	73	77	0	22		0		0.0	0.00	29.93	30.04	1.7	19	3.9	14	13	10	14	16	
17	97	80	89*	5	73	78	0	24		0		0.0	0.00	29.86	29.98	2.3	20	5.2	20	06	17	05	17	
18	92	77	85	1	73	76	0	20	RA	0		0.0	T	29.86	29.97	3.5	20	5.9	24	17	22	15	18	
19	96	74	85	1	71	76	0	20	MIFG	0		0.0	0.00	29.89	30.00	3.3	17	4.2	22	04	18	05	19	
20	96	73	85	1	70	75	0	20		0		0.0	0.00	29.92	30.03	3.2	16	5.8	24	16	20	16	20	
21	97	75	86	2	72	76	0	21	TSRA RA	0		0.0	0.23	29.88	30.00	3.6	17	4.8	32	09	23	09	21	
22	97*	75	86	2	72	75	0	21	TS TSRA RA	0		0.0	0.10	29.82	29.94	2.0	26	3.5	26	10	22	10	22	
23	93	74	84	0	71	74	0	19	TSRA RA	0		0.0	T	29.80	29.91	2.7	12	5.1	20	11	17	16	23	
24	88	73	81	-3	72	75	0	16	TS TSRA RA BR	0		0.0	1.67	29.83	29.94	3.5	15	5.7	39*	28	30	26	24	
25	87	73*	80	-4	72	74	0	15	TSRA RA FG BR	0		0.0	1.41	29.85	29.96	6.5	12	7.3	36	14	31*	15	25	
26	79	75	77*	-7	73	75	0	12	TS TSRA RA FG BR	0		0.0	2.08	29.77	29.89	7.1	15	8.6	29	14	25	14	26	
27	89	77	83	-1	74	77	0	18	RA BR	0		0.0	0.01	29.85	29.95	8.2	17	8.3	22	16	18	17	27	
28	94	77	86	2	74	77	0	21	HZ	0		0.0	0.00	29.94	30.04	7.5	16	7.7	23	17	18	15	28	
29	93	77	85	1	75	77	0	20	TS RA	0		0.0	0.02	29.93	30.05	4.9	15	5.8	18	23	15	13	29	
30	93	76	85	1	74	77	0	20		0		0.0	0.00	29.85	29.96	4.9	15	5.7	22	13	20	13	30	
31	92	76	84	0	73	76	0	19	RA	0		0.0	0.04	29.82	29.94	6.5	17	6.7	22	17	18	17	31	

91.2	75.3	83.3	☼	72.7	75.8	0.0	18.5	< MONTHLY AVERAGES   TOTALS >				0.0	7.85	29.89	30.00	3.7	15	6.0	< MONTHLY AVERAGES			
-2.4	1.8	-0.3		-----DEPARTURE FROM NORMAL -----								4.67	SUNSHINE, CLOUD, & VISIBILITY TABLES ON PAGE 3									

<b>DEGREE DAYS</b>				<b>GREATEST 24-HR PRECIPITATION :</b> 2.78 <b>DATE :</b> 25-26				<b>SEA LEVEL PRESSURE</b>									
<b>MONTHLY</b>		<b>SEASON TO DATE</b>		<b>GREATEST 24-HR SNOWFALL :</b> 0.0 <b>DATE :</b>				<b>MAXIMUM :</b> 30.15		<b>DATE</b> 02		<b>TIME</b> 0853					
<b>TOTAL DEPARTURE</b>		<b>TOTAL DEPARTURE</b>		<b>GREATEST SNOW DEPTH :</b> 0 <b>DATE :</b>				<b>MINIMUM :</b> 29.85		<b>DATE</b> 26		<b>TIME</b> 1953					
<b>HEATING :</b>	0	0	0	0	<b>NUMBER OF -&gt; DAYS WITH</b>				<b>MAXIMUM TEMP &gt;= 90 :</b> 22		<b>MINIMUM TEMP &lt;= 32 :</b> 0		<b>PRECIPITATION &gt;= 0.01 INCH :</b> 13				
<b>COOLING :</b>	574	1	1864	232					<b>MAXIMUM TEMP &lt;= 32 :</b> 0		<b>MINIMUM TEMP &lt;= 0 :</b> 0		<b>PRECIPITATION &gt;= 0.10 INCH :</b> 9				
												<b>THUNDERSTORMS :</b> 15		<b>HEAVY FOG :</b> 1		<b>SNOWFALL &gt;= 1.0 INCH :</b> 0	

**JULY 2006  
HOUSTON, TX**

# HOURLY PRECIPITATION

(WATER EQUIVALENT IN INCHES)

HOUSTON, TX (KIAH)  
JULY 2006

WBAN # 12960

Date	FOR HOUR (LST) ENDING AT												Date	FOR HOUR (LST) ENDING AT												Date	Sum of Hourly Data	2400 LST Water Equiv.
	1	2	3	4	5	6	7	8	9	10	11	12		13	14	15	16	17	18	19	20	21	22	23	24			
01													01	T	0.01	0.02	0.01	T	T	T					01	0.04	0.04	
02													02												02	0.00	0.00	
03	T	0.53			0.15								03	T	T				T	T					03	0.68	0.68	
04													04	0.09	0.01			T	0.03	0.01	0.01	T	0.01		04	0.16	0.16	
05	0.01	T		T	0.01	0.04	0.06	0.04					05												05	0.88	0.88	
06													06						0.52	0.01		T			06	0.53	0.53	
07													07												07	0.00	0.00	
08													08		T		T								08	T	T	
09													09							T	T				09	T	T	
10													10												10	T	T	
11													11												11	0.00	0.00	
12													12												12	0.00	0.00	
13													13												13	0.00	0.00	
14													14		T										14	T	T	
15													15												15	0.00	0.00	
16													16												16	0.00	0.00	
17													17												17	0.00	0.00	
18													18	T											18	T	T	
19													19												19	0.00	0.00	
20													20												20	0.00	0.00	
21													21				0.22	0.01							21	0.23	0.23	
22													22				0.09	0.01							22	0.10	0.10	
23													23					T							23	T	T	
24													24							T					24	1.67	1.67	
25													25	0.05	0.06	T						0.01	0.03	T	25	1.41	1.41	
26	T		0.01	T	0.05	0.24	0.14	0.27	0.59	0.58	0.07	0.03	26	0.08		T	0.01	0.01							26	2.08	2.08	
27				T		T	0.01	T					27												27	0.01	0.01	
28													28												28	0.00	0.00	
29													29			0.02									29	0.02	0.02	
30													30												30	0.00	0.00	
31													31	0.04											31	0.04	0.04	

\* Indicates sum of Hourly and Daily disagree.

### MAXIMUM SHORT DURATION PRECIPITATION (See Note)

Time Period (Minutes)	5	10	15	20	30	45	60	80	100	120	150	180
Precipitation (Inches)												
Ending Date												
Ending Time (Hr/Min)												

Note : The hourly and daily precipitation totals are printed in the last 2 columns and hi-lighted in red when they disagree. NWS does not edit ASOS hourly values but may edit daily and monthly totals. Hourly, daily, and monthly totals are printed as reported by the ASOS site.

Date and time are not entered for TRACE amounts.

# REFERENCE NOTES & SUPPLEMENTAL SUMMARIES

\* = Extreme for the month (last occurrence if more than one).

T = Trace precipitation amount.

+ = also occurs on earlier date.

FG+ = Heavy fog, visibility .25 miles or less.

BLANK entries denote missing or unreported data.

Resultant wind is the vector sum of the wind speeds and directions divided by the number of observations.

Wind direction is recorded in tens of degrees (2 digits) clockwise from true north. '00' = calm, 'VR' = variable.

Precipitation is for the 24-hour period ending at the time indicated in the column heading.

Water Equivalent of snow on the ground is reported only when the depth is 2 or more inches.

NORMALS ARE FOR THE YEARS 1971-2000

## WEATHER NOTATIONS

QUALIFIER	WEATHER PHENOMENA		
DESCRIPTOR	PRECIPITATION	OBSCURATION	OTHER
BC Patches	DZ Drizzle	BR Mist	DS Duststorm
BL Blowing	GR Hail	DU Widespread Dust	FC Funnel Cloud
DR Low Drifting	GS Small Hail and/or Snow Pellets	FG Fog	+FC Tornado Waterspout
FZ Freezing	IC Ice Crystals	FU Smoke	PO Well-Developed Dust/Sand Whirls
MI Shallow	PL Ice Pellets	HZ Haze	
PR Partial	RA Rain	PY Spray	SQ Squalls
SH Shower(s)	SG Snow Grains	SA Sand	SS Sandstorm
TS Thunderstorm	SN Snow	VA Volcanic Ash	GL Glaze
VC In the Vicinity	UP Unkown Precipitation		

Intensity (as indicated on pages 4 to 6):  
'+' = Heavy    '' = Moderate    '-' = Light

# HOUSTON, TX JULY 2006

Ceilometer (30-second) data are used to derive cloudiness at or below 12,000 feet. This cloudiness is the mean cloud cover detected during sunrise to sunset (SR-SS), or midnight to midnight (MN-MN).

Satellite data are used to derive cloudiness above 12,000 feet. Effective Cloud Amount is based on the cloud cover and the transparency of the clouds within the satellite field of view (approx. 31x31 miles).

Sky Condition is based on the sum (not to exceed 8) of the sunrise to sunset cloud cover below and above 12,000 feet. Both ceilometer and satellite data must be present to compute Sky Condition. Clear = 0-2 oktas, Partly Cloudy = 3-6 oktas, Cloudy = 7-8 oktas.

A Heating (Cooling) Degree Day is the difference between the average daily temperature and 65 degrees F. The HDD season begins July 1, the CDD season begins January 1.

Dew Point is the temperature to which the air must be cooled to achieve 100% relative humidity. Wet Bulb is the temperature the air would have if cooled to saturation at constant pressure by evaporation of water into it.

Snow Depth, Snowfall, and Sunshine data may come from nearby sites that the National Weather Service deems Climatologically representative of this site.

## ADDITIONAL NOTES:

Date	SUNSHINE		CLOUDINESS (OKTAS)				VISIBILITY (MILES)		RESERVED
	TOTAL MINUTES	PERCENT POSSIBLE	SR-SS		MN-MN		MINIMUM	MAXIMUM	
			Sky Cover	Satellite	Sky Cover	Satellite			
01							1.00	8.00	
02							4.00	10.00	
03							1.00	10.00	
04							1.00	10.00	
05							4.00	10.00	
06							0.25	10.00	
07							7.00	10.00	
08							6.00	10.00	
09							9.00	10.00	
10							8.00	10.00	
11							7.00	10.00	
12							6.00	10.00	
13							9.00	10.00	
14							10.00	10.00	
15							10.00	10.00	
16							10.00	10.00	
17							10.00	10.00	
18							10.00	10.00	
19							10.00	10.00	
20							9.00	10.00	
21							10.00	10.00	
22							5.00	10.00	
23							7.00	10.00	
24							1.00	10.00	
25							0.75	10.00	
26							1.25	10.00	
27							6.00	10.00	
28							5.00	10.00	
29							8.00	10.00	
30							9.00	10.00	
31							10.00	10.00	
MONTHLY AVGS							6.30	9.94	
<b>SUNSHINE (Minutes)</b>									
Total :					Possible :				
Percent Possible :									
<b>NUMBER OF DAYS WITH :</b>									
SKY CONDITION									
Clear		Partly CLDY			Cloudy			Missing	
<b>MINIMUM VISIBILITY (MILES)</b>									
<= .25		<= 3.0			>= 7.0				
1		7			17				

## OBSERVATIONS AT 3-HOURLY INTERVALS

HOUSTON, TX  
JULY 2006

KIAH

WBAN # 12960

HOUR (LST)	SKY COVER	CEILING 100's of FT.	SATELLITE		WEATHER	TEMPERATURE °F			WIND RELATIVE HUMIDITY (PCT)	WIND SPEED (MPH) DIRECTION Tens of Deg	PRESSURE (INCHES, HG)		HOUR (LST)	SKY COVER	CEILING 100's of FT.	SATELLITE		WEATHER	TEMPERATURE °F			WIND RELATIVE HUMIDITY (PCT)	WIND SPEED (MPH) DIRECTION Tens of Deg	PRESSURE (INCHES, HG)				
			Observation Time (LST)	Eff Cld Amt Oktas		VISIBILITY (MILES)	DRY BULB	DEW POINT			WET BULB	STATION				SEA LEVEL	Observation Time (LST)		Eff Cld Amt Oktas	VISIBILITY (MILES)	DRY BULB			DEW POINT	WET BULB	STATION	SEA LEVEL	
SUNRISE: 0523      JUL 01      SUNSET: 1925													SUNRISE: 0525      JUL 07      SUNSET: 1925															
03	BKN	250			6.00	BR	75	72	73	90	0	00	29.95	30.06	03	OVC	095			10.00	76	73	74	90	7	06	29.94	30.04
06	BKN	250			3.00	BR	75	72	73	90	3	34	29.96	30.07	06	OVC	130			7.00	77	72	74	85	8	04	29.97	30.08
09	OVC	250			6.00	HZ	80	74	76	82	7	05	30.01	30.12	09	BKN	250			10.00	81	70	74	69	7	07	30.00	30.11
12	OVC	250			7.00		85	72	76	65	9	10	29.98	30.09	12	BKN	250			10.00	86	72	76	63	9	07	29.98	30.10
15	OVC	100			4.00	-RA BR	77	73	74	88	3	26	30.00	30.10	15	BKN	250			10.00	89	72	77	57	8	04	29.95	30.06
18	OVC	130			2.00	BR	78	74	75	88	5	VR	29.97	30.08	18	BKN	250			10.00	88	72	77	59	12	06	29.93	30.03
21	OVC	250			2.00	BR	77	74	75	91	3	VR	29.97	30.08	21	BKN	250			10.00	80	73	75	79	8	05	29.95	30.06
24	BKN	250			6.00	BR	76	73	74	90	3	12	29.98	30.09	24	BKN	250			9.00	79	73	75	82	3	03	29.97	30.08
SUNRISE: 0523      JUL 02      SUNSET: 1925													SUNRISE: 0526      JUL 08      SUNSET: 1925															
03	BKN	250			6.00	BR	74	72	73	94	3	04	29.98	30.09	03	BKN	250			8.00	78	72	74	82	7	03	29.95	30.06
06	OVC	250			5.00	BR	75	72	73	90	7	03	30.02	30.13	06	BKN	250			7.00	76	71	73	85	8	04	29.97	30.07
09	OVC	110			10.00		79	71	74	77	7	12	30.03	30.15	09	SCT	250			7.00	82	72	75	72	7	13	29.98	30.10
12	OVC	250			10.00		83	72	75	70	12	11	30.02	30.13	12	BKN	250			10.00	89	74	78	61	5	VR	29.97	30.07
15	OVC	250			10.00		82	70	74	67	15	14	29.98	30.10	15	BKN	250			10.00	90	72	77	56	12	09	29.90	30.01
18	OVC	250			10.00		80	71	74	74	9	11	29.97	30.08	18	BKN	250			10.00	84	75	78	74	3	20	29.89	30.00
21	BKN	250			10.00		77	72	74	85	8	12	30.00	30.11	21	BKN	250			10.00	80	75	77	85	3	17	29.90	30.01
24	SCT	250			10.00		76	72	73	87	3	11	29.98	30.10	24	BKN	250			10.00	79	74	76	85	0	00	29.91	30.01
SUNRISE: 0524      JUL 03      SUNSET: 1925													SUNRISE: 0526      JUL 09      SUNSET: 1924															
03	SCT	021			10.00	TS	76	73	74	90	3	33	29.97	30.08	03	SCT	250			10.00	76	74	75	94	0	00	29.90	30.00
06	OVC	055			1.00	BR	75	73	74	94	7	07	30.00	30.10	06	BKN	250			9.00	76	73	74	90	0	00	29.91	30.02
09	BKN	075			3.00		77	73	74	88	8	11	30.00	30.11	09	BKN	250			10.00	85	75	78	72	5	15	29.93	30.03
12	BKN	045			10.00	-RA	78	72	74	82	14	11	30.01	30.11	12	BKN	250			10.00	86	75	78	70	15	14	29.91	30.01
15	OVC	050			10.00		79	72	74	79	8	12	29.95	30.06	15	BKN	140			10.00	89	74	78	61	9	17	29.86	29.97
18	BKN	250			10.00		80	72	75	77	7	14	29.93	30.04	18	SCT	090			10.00	84	75	78	74	0	00	29.84	29.95
21	BKN	120			10.00		77	73	74	88	7	13	29.95	30.06	21	SCT	250			10.00	81	73	75	77	6	17	29.85	29.96
24	BKN	250			9.00		75	72	73	90	3	11	29.95	30.06	24	SCT	250			10.00	80	74	76	82	5	18	29.87	29.97
SUNRISE: 0524      JUL 04      SUNSET: 1925													SUNRISE: 0527      JUL 10      SUNSET: 1924															
03	OVC	250			7.00		75	73	74	94	0	00	29.94	30.04	03	FEW	250			10.00	76	74	75	94	0	00	29.85	29.96
06	BKN	250			6.00	BR	75	73	74	94	6	10	29.94	30.04	06	SCT	250			8.00	76	74	75	94	0	00	29.89	29.99
09	OVC	250			10.00		81	75	77	82	5	VR	29.97	30.07	09	BKN	250			10.00	86	75	78	70	7	18	29.91	30.02
12	OVC	060			1.00	-TSRA BR	76	72	73	87	22	17	29.95	30.06	12	SCT	250			10.00	91	72	78	54	7	18	29.89	30.00
15	SCT	080			10.00		83	73	76	72	8	13	29.87	29.98	15	BKN	250			10.00	91	74	79	58	8	17	29.84	29.94
18	BKN	130			10.00		80	74	76	82	5	16	29.85	29.96	18	BKN	250			8.00	89	72	77	57	13	17	29.83	29.93
21	OVC	065			10.00	-RA	77	74	75	91	6	10	29.89	30.00	21	SCT	250			9.00	83	73	76	72	7	17	29.86	29.96
24	BKN	070			6.00	BR	77	74	75	91	8	14	29.86	29.96	24	BKN	250			9.00	81	74	76	79	7	17	29.88	29.98
SUNRISE: 0525      JUL 05      SUNSET: 1925													SUNRISE: 0527      JUL 11      SUNSET: 1924															
03	OVC	250			6.00	BR	78	75	76	91	0	00	29.83	29.94	03	BKN	250			9.00	79	73	75	82	5	18	29.89	29.99
06	SCT	070			10.00		77	73	74	88	0	00	29.85	29.96	06	SCT	250			7.00	76	73	74	90	5	17	29.92	30.02
09	SCT	130			10.00		81	73	75	77	7	06	29.88	29.99	09	SCT	025			10.00	86	74	78	68	10	17	29.94	30.05
12	BKN	037			8.00	-RA	77	74	75	91	6	11	29.90	30.00	12	BKN	045			10.00	91	73	78	56	9	17	29.93	30.03
15	BKN	130			10.00		85	74	77	70	10	11	29.81	29.92	15	BKN	050			10.00	92	71	77	50	8	19	29.90	30.00
18	BKN	090			10.00		82	74	76	77	8	12	29.80	29.91	18	SCT	250			10.00	90	72	77	56	12	16	29.87	29.97
21	OVC	250			10.00		78	74	75	88	8	11	29.85	29.96	21	FEW	250			10.00	84	72	76	67	10	17	29.91	30.02
24	BKN	250			10.00		76	73	74	90	6	11	29.87	29.97	24	CLR	NC			8.00	81	73	75	77	7	18	29.93	30.04
SUNRISE: 0525      JUL 06      SUNSET: 1925													SUNRISE: 0528      JUL 12      SUNSET: 1924															
03	SCT	250			10.00		75	73	74	94	3	01	29.85	29.96	03	CLR	NC			7.00	78	73	75	85	3	17	29.92	30.02
06	OVC	020			0.25	BR	75	72	73	90	5	05	29.88	29.99	06	CLR	NC			6.00	74	72	73	94	3	17	29.93	30.04
09	BKN	250			10.00		83	73	76	72	10	06	29.93	30.03	09	SCT	024			10.00	86	73	77	65	7	21	29.98	30.09
12	BKN	250			10.00		86	74	78	68	9	09	29.93	30.03	12	BKN	039			10.00	92	72	78	52	3	VR	29.96	30.07
15	BKN	250			10.00		89	73	78	59	8	10	29.89	29.99	15	SCT	250			10.00	92	74	79	56	13	13	29.91	30.02
18	SCT	035			0.75	TSRA BR	77	74	75	91	3	05	29.90	30.01	18	SCT	250			10.00	90	74	79	59	9	17	29.86	29.97
21	BKN	130			10.00		79	74	76	85	8	03	29.94	30.05	21	FEW	250			10.00	84	73	76	70	8	18	29.89	30.00
24	BKN	060			10.00		78	74	75	88	7	02	29.96	30.06	24	CLR	NC			10.00	81	74	76	79	6	17	29.93	30.04

## OBSERVATIONS AT 3-HOURLY INTERVALS

HOUSTON, TX  
JULY 2006

KIAH

WBAN # 12960

HOUR (LST)	SKY COVER	CEILING 100's of FT.	SATELLITE		WEATHER	TEMPERATURE °F			WIND SPEED (MPH) DIRECTION Tens of Deg	PRESSURE (INCHES, HG)		HOUR (LST)	SKY COVER	CEILING 100's of FT.	SATELLITE		WEATHER	TEMPERATURE °F			WIND SPEED (MPH) DIRECTION Tens of Deg	PRESSURE (INCHES, HG)							
			Observation Time (LST)	Eff Cld Amt Oktas		DRY BULB	DEW POINT	WET BULB		RELATIVE HUMIDITY (PCT)	STATION				SEA LEVEL	Observation Time (LST)		Eff Cld Amt Oktas	DRY BULB	DEW POINT		WET BULB	RELATIVE HUMIDITY (PCT)	STATION	SEA LEVEL				
			Visibility (MILES)	Visibility (MILES)		Visibility (MILES)	Visibility (MILES)	Visibility (MILES)		Visibility (MILES)	Visibility (MILES)				Visibility (MILES)														
SUNRISE: 0528						JUL 13						SUNSET: 1923																	
03	FEW	250				77	74	75	91	0	00	29.90	30.01	03	CLR	NC				76	72	73	87	0	00	29.87	29.97		
06	SCT	250				76	73	74	90	0	00	29.91	30.02	06	SCT	250			MIFG	75	72	73	90	0	00	29.90	30.01		
09	SCT	021				86	74	78	68	7	22	29.94	30.05	09	BKN	021				86	73	77	65	5	VR	29.94	30.04		
12	BKN	040				91	71	77	52	3	16	29.93	30.04	12	BKN	250				90	70	76	52	0	00	29.92	30.03		
15	BKN	250				90	73	78	57	13	18	29.90	30.00	15	SCT	250				94	67	75	41	7	24	29.86	29.97		
18	SCT	250				89	74	78	61	13	15	29.86	29.97	18	SCT	250				91	72	78	54	13	15	29.84	29.95		
21	SCT	250				84	72	76	67	8	16	29.86	29.97	21	FEW	250				85	70	75	61	7	18	29.90	30.00		
24	SCT	250				81	74	76	79	6	16	29.88	29.98	24	BKN	250				79	71	74	77	3	15	29.93	30.03		
SUNRISE: 0529						JUL 14						SUNRISE: 0532						JUL 19						SUNSET: 1921					
03	FEW	250				78	74	75	88	0	00	29.88	29.98	03	SCT	250				76	69	71	79	5	35	29.90	30.00		
06	SCT	250				76	73	74	90	3	17	29.89	30.00	06	BKN	250				75	69	71	82	5	32	29.94	30.04		
09	BKN	250				86	73	77	65	6	17	29.94	30.04	09	SCT	250				86	72	76	63	3	VR	29.97	30.08		
12	BKN	250				91	71	77	52	3	26	29.94	30.04	12	BKN	040				91	69	76	49	0	00	29.96	30.06		
15	SCT	130				89	72	77	57	8	18	29.91	30.02	15	BKN	250				88	70	76	55	15	18	29.92	30.02		
18	BKN	250				90	71	77	54	8	12	29.88	29.98	18	FEW	045				90	69	76	50	10	15	29.89	30.00		
21	SCT	250				83	73	76	72	7	16	29.92	30.02	21	SCT	250				84	72	76	67	5	17	29.92	30.02		
24	SCT	250				82	73	76	74	0	00	29.95	30.06	24	FEW	250				81	72	75	74	5	20	29.92	30.02		
SUNRISE: 0529						JUL 15						SUNRISE: 0533						JUL 20						SUNSET: 1921					
03	FEW	250				79	73	75	82	3	20	29.94	30.04	03	SCT	250				77	72	74	85	3	20	29.89	29.99		
06	SCT	250				77	73	74	88	0	00	29.98	30.09	06	SCT	250				75	72	73	90	0	00	29.91	30.02		
09	SCT	250				86	74	78	68	0	00	30.03	30.14	09	BKN	021				84	73	76	70	6	29	29.95	30.05		
12	SCT	250				92	71	77	50	0	00	30.01	30.11	12	BKN	250				90	69	76	50	5	VR	29.93	30.03		
15	BKN	250				92	70	77	49	5	24	29.95	30.06	15	BKN	250				94	67	75	41	8	15	29.87	29.97		
18	BKN	250				90	72	77	56	9	14	29.93	30.03	18	BKN	250				89	73	78	59	10	17	29.84	29.95		
21	FEW	250				84	74	77	72	5	18	29.96	30.07	21	SCT	250				85	72	76	65	8	18	29.86	29.97		
24	FEW	250				82	73	76	74	3	VR	29.96	30.06	24	CLR	NC				81	72	75	74	5	19	29.87	29.98		
SUNRISE: 0530						JUL 16						SUNRISE: 0533						JUL 21						SUNSET: 1920					
03	FEW	250				77	73	74	88	0	00	29.97	30.07	03	CLR	NC				78	73	75	85	0	00	29.84	29.95		
06	SCT	250				78	74	75	88	0	00	29.98	30.09	06	FEW	250				76	73	74	90	0	00	29.86	29.97		
09	SCT	250				87	74	78	65	6	30	30.01	30.11	09	SCT	250				86	75	78	70	7	24	29.88	29.98		
12	BKN	250				92	72	78	52	6	28	29.97	30.07	12	SCT	250				93	71	78	49	5	29	29.85	29.96		
15	BKN	250				95	71	78	46	5	VR	29.90	30.00	15	BKN	250				95	70	77	44	9	02	29.77	29.87		
18	SCT	250				94	70	77	46	6	17	29.86	29.97	18	OVC	250				78	72	74	82	8	19	29.78	29.89		
21	CLR	NC				87	74	78	65	7	18	29.90	30.00	21	BKN	250				77	73	74	88	0	00	29.81	29.92		
24	CLR	NC				83	73	76	72	3	20	29.90	30.01	24	BKN	250				77	72	74	85	5	01	29.82	29.92		
SUNRISE: 0531						JUL 17						SUNRISE: 0534						JUL 22						SUNSET: 1920					
03	CLR	NC				81	74	76	79	3	23	29.89	30.00	03	BKN	250				76	72	73	87	3	36	29.79	29.90		
06	SCT	250				80	74	76	82	0	00	29.90	30.01	06	BKN	250				74	71	72	90	3	06	29.82	29.93		
09	SCT	250				87	74	78	65	9	26	29.92	30.03	09	SCT	250				83	72	75	70	6	14	29.82	29.93		
12	FEW	030				93	71	78	49	3	36	29.90	30.00	12	BKN	250				90	69	76	50	5	05	29.81	29.92		
15	SCT	250				97	71	79	43	6	27	29.83	29.94	15	BKN	250				90	72	77	56	8	12	29.75	29.85		
18	BKN	250				94	73	79	51	13	13	29.82	29.93	18	BKN	250				79	70	73	74	6	11	29.77	29.88		
21	SCT	250				85	78	80	80	5	14	29.84	29.95	21	BKN	080				77	72	74	85	6	08	29.82	29.92		
24	BKN	250				83	75	77	77	3	23	29.85	29.95	24	BKN	250				77	72	74	85	6	34	29.82	29.93		
SUNRISE: 0531						JUL 18						SUNRISE: 0535						JUL 23						SUNSET: 1919					
03	SCT	250				82	74	76	77	5	24	29.86	29.96	03	CLR	NC				75	72	73	90	0	00	29.80	29.91		
06	BKN	250				80	74	76	82	5	26	29.87	29.97	06	BKN	250				75	71	72	87	5	05	29.82	29.93		
09	BKN	250				86	72	76	63	7	28	29.90	30.01	09	SCT	055				84	74	77	72	8	15	29.86	29.96		
12	BKN	250				83	73	76	72	21	16	29.90	30.00	12	SCT	120				78	72	74	82	0	00	29.85	29.96		
15	BKN	250				90	72	77	56	6	15	29.85	29.95	15	BKN	250				86	74	78	68	0	00	29.82	29.93		
18	SCT	250				88	70	76	55	9	18	29.83	29.94	18	BKN	250				86	71	76	61	5	18	29.81	29.91		
21	FEW	250				83	71	75	67	6	17	29.86	29.96	21	BKN	250				79	71	74	77	6	17	29.85	29.95		
24	CLR	NC				79	72	74	79	5	17	29.87	29.97	24	BKN	250				79	70	73	74	7	17	29.85	29.96		

# OBSERVATIONS AT 3-HOURLY INTERVALS

HOUSTON, TX  
JULY 2006

KIAH

WBAN # 12960

HOUR (LST)	SKY COVER	CEILING 100's of FT.	SATELLITE		WEATHER	TEMPERATURE °F			WIND		PRESSURE (INCHES, HG)								
			Observation Time (LST)	Eff Cl'd Amt Oktas		VISIBILITY (MILES)	DRY BULB	DEW POINT	WET BULB	RELATIVE HUMIDITY (PCT)	SPEED (MPH)	DIRECTION Tens of Deg	STATION	SEA LEVEL					
															WEATHER	DRY BULB	DEW POINT	WET BULB	RELATIVE HUMIDITY (PCT)
<b>SUNRISE: 0535 JUL 25 SUNSET: 1918</b>						03	BKN	250			10.00	74	71	72	90	0	00	29.85	29.96
06	BKN	250				10.00	74	71	72	90	0	00	29.86	29.96					
09	BKN	250				10.00	85	73	77	67	7	12	29.87	29.98					
12	BKN	035			-RA BR	6.00	77	74	75	91	9	06	29.90	30.00					
15	OVC	130				10.00	77	73	74	88	12	11	29.85	29.96					
18	OVC	021				10.00	78	74	75	88	10	07	29.82	29.93					
21	BKN	250				10.00	76	73	74	90	6	12	29.83	29.94					
24	OVC	080			-RA BR	6.00	75	72	73	90	7	10	29.84	29.94					
<b>SUNRISE: 0536 JUL 26 SUNSET: 1918</b>						03	OVC	080			7.00	76	73	74	90	9	12	29.80	29.91
06	OVC	070			+RA BR	5.00	76	73	74	90	7	08	29.78	29.88					
09	OVC	040			TS+RA BR	1.25	76	74	75	94	23	14	29.80	29.91					
12	OVC	050			-RA BR	4.00	77	73	74	88	10	17	29.78	29.89					
15	OVC	020			-RA	10.00	78	74	75	88	9	18	29.77	29.88					
18	BKN	130				10.00	79	74	76	85	14	18	29.74	29.85					
21	BKN	250				10.00	78	73	75	85	6	17	29.77	29.88					
24	OVC	250				10.00	77	72	74	85	6	15	29.79	29.89					
<b>SUNRISE: 0536 JUL 27 SUNSET: 1917</b>						03	BKN	250			7.00	79	75	76	88	7	16	29.78	29.88
06	BKN	120			-RA	6.00	81	76	77	85	5	19	29.82	29.93					
09	OVC	250				7.00	83	76	78	80	8	19	29.87	29.97					
12	OVC	250				8.00	87	74	78	65	10	18	29.87	29.98					
15	OVC	250				10.00	88	72	77	59	13	17	29.86	29.97					
18	BKN	250				10.00	87	73	77	63	12	17	29.83	29.94					
21	BKN	250				10.00	82	75	77	79	6	17	29.87	29.97					
24	OVC	250				10.00	81	76	77	85	5	17	29.91	30.01					
<b>SUNRISE: 0537 JUL 28 SUNSET: 1917</b>						03	BKN	250			8.00	78	75	76	91	0	00	29.90	30.01
06	BKN	250				7.00	78	75	76	91	3	17	29.92	30.02					
09	BKN	250				10.00	87	75	78	68	9	18	29.97	30.07					
12	BKN	250				10.00	92	70	77	49	8	18	29.97	30.08					
15	BKN	250				10.00	93	73	79	52	13	18	29.94	30.05					
18	SCT	250				10.00	88	75	79	65	18	15	29.92	30.03					
21	FEW	250				10.00	83	74	77	74	8	16	29.95	30.06					
24	FEW	250				10.00	78	74	75	88	0	00	29.97	30.08					
<b>SUNRISE: 0537 JUL 29 SUNSET: 1916</b>						03	SCT	250			10.00	79	75	76	88	5	16	29.95	30.06
06	BKN	250				8.00	77	75	76	94	0	00	29.97	30.07					
09	BKN	250				10.00	87	75	78	68	9	19	29.98	30.09					
12	SCT	250				10.00	92	73	78	54	8	15	29.98	30.09					
15	BKN	250			TS	10.00	85	73	77	67	3	26	29.95	30.05					
18	BKN	250				10.00	90	73	78	57	9	17	29.89	29.99					
21	FEW	250				10.00	82	74	76	77	7	16	29.90	30.01					
24	CLR	NC				10.00	79	75	76	88	0	00	29.91	30.02					
<b>SUNRISE: 0538 JUL 30 SUNSET: 1915</b>						03	SCT	250			10.00	78	74	75	88	0	00	29.89	30.00
06	SCT	250				10.00	76	74	75	94	0	00	29.90	30.01					
09	SCT	250				10.00	86	75	78	70	7	15	29.91	30.01					
12	BKN	037				10.00	90	73	78	57	6	15	29.88	29.98					
15	SCT	250				10.00	92	74	79	56	14	15	29.82	29.92					
18	SCT	250				10.00	89	71	76	55	12	17	29.79	29.90					
21	CLR	NC				10.00	83	72	75	70	6	17	29.80	29.91					
24	FEW	030				10.00	78	73	75	85	0	00	29.84	29.94					

HOUR (LST)	SKY COVER	CEILING 100's of FT.	SATELLITE		WEATHER	TEMPERATURE °F			WIND		PRESSURE (INCHES, HG)								
			Observation Time (LST)	Eff Cl'd Amt Oktas		VISIBILITY (MILES)	DRY BULB	DEW POINT	WET BULB	RELATIVE HUMIDITY (PCT)	SPEED (MPH)	DIRECTION Tens of Deg	STATION	SEA LEVEL					
															WEATHER	DRY BULB	DEW POINT	WET BULB	RELATIVE HUMIDITY (PCT)
<b>SUNRISE: 0539 JUL 31 SUNSET: 1915</b>						03	SCT	250			10.00	77	74	75	91	0	00	29.82	29.92
06	SCT	150				10.00	76	74	75	94	0	00	29.83	29.94					
09	BKN	250				10.00	86	74	78	68	13	17	29.85	29.95					
12	BKN	250				10.00	92	71	77	50	7	18	29.83	29.93					
15	BKN	250				10.00	89	72	77	57	8	18	29.82	29.92					
18	SCT	250				10.00	90	70	76	52	9	17	29.80	29.90					
21	SCT	250				10.00	83	74	77	74	9	17	29.84	29.94					
24	SCT	250				10.00	81	75	77	82	6	17	29.85	29.96					

## 3-HOURLY OBSERVATION NOTES

Sky Cover is the amount of the sky obscured. CLR or SKC = 0, FEW = 1/8-2/8, SCT = 3/8-4/8, BKN = 5/8-7/8, OVC = 8/8, W = Vertical Visibility = 8/8

Ceiling is reported in hundreds of feet above ground level for clouds at or below 12,000 feet. NC = No Ceiling detected.

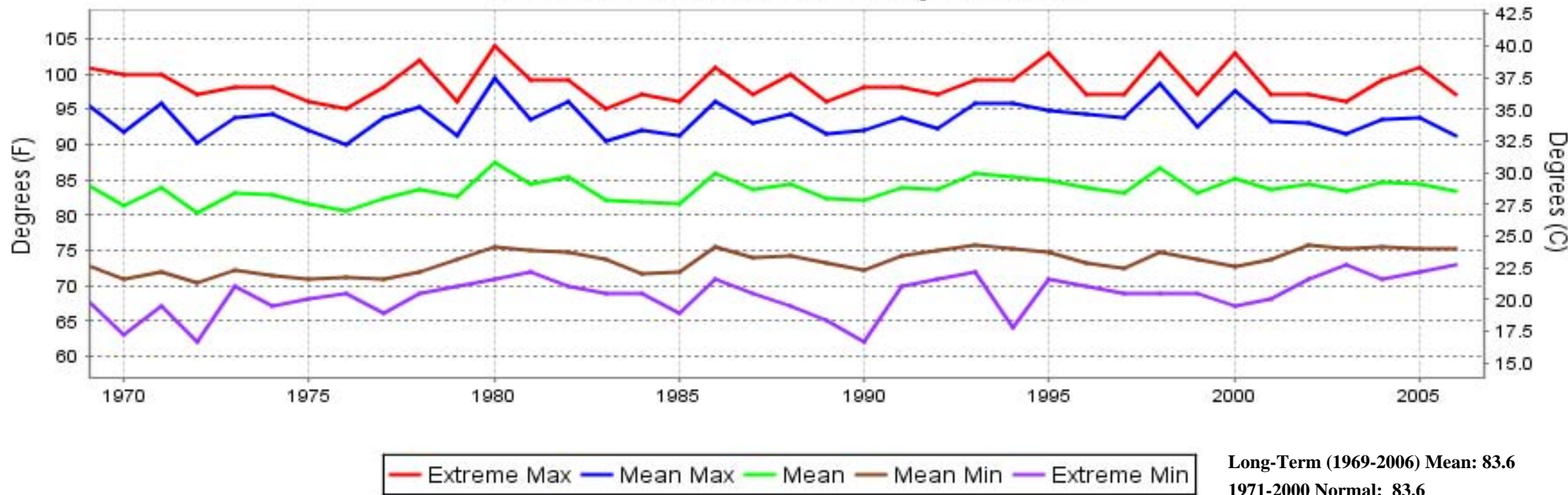
& = Original observation contained additional weather elements.

See page 3 for additional notes.

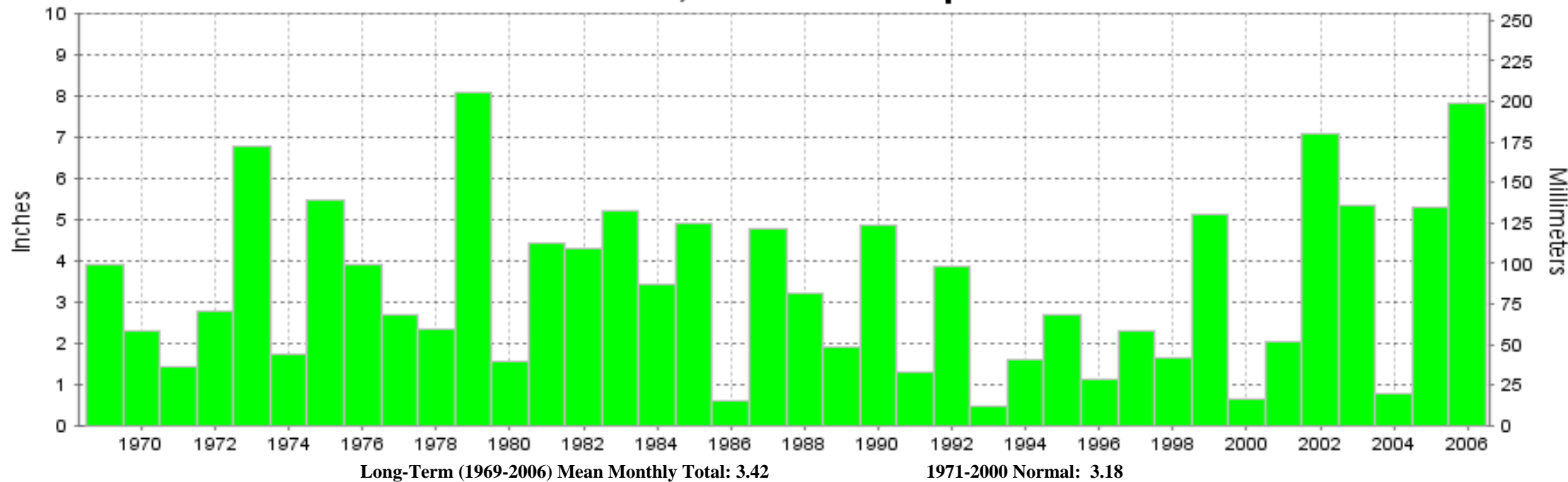
## SUMMARY BY HOUR

HOUR (LST)	AVERAGES										RESULTANT WIND (MPH)	
	CEILOMETER	EFF CLD AMT	DRY BULB	DEW POINT	WET BULB	RELATIVE HUMIDITY	PRESSURE (Inches, HG)		VISIBILITY (Miles)	WIND SPEED (MPH)	SPEED	DIRECTION
							STATION	SEA LEVEL				
01			78	73	75	84	29.90	30.00	9.40	3	4	16
02			78	73	75	86	29.89	29.99	9.19	2	5	16
03			77	73	74	88	29.89	29.99	8.97	2	4	17
04			77	73	74	88	29.89	30.00	8.77	2	4	17
05			76	73	74	89	29.90	30.00	8.40	2	5	16
06			76	73	74	89	29.91	30.01	7.75	3	4	15
07			79	74	75	85	29.92	30.03	8.13	5	3	15
08			82	74	76	78	29.93	30.03	9.00	6	3	14
09			84	74	77	71	29.93	30.04	9.10	8	3	15
10			85	72	76	66	29.93	30.04	9.15	7	3	14
11			87	72	77	64	29.93	30.04	9.05	7	3	14
12			87	72	77	62	29.92	30.03	9.16	7	4	13
13			88	72	77	61	29.91	30.01	9.52	8	4	13
14			89	72	77	60	29.89	30.00	9.81	8	5	13
15			88	72	77	60	29.88	29.98	9.81	9	4	13
16			87	72	77	62	29.87	29.97	9.55	9	4	13
17			87	72	77	63	29.86	29.97	9.68	10	4	12
18			86	72	77	66	29.86	29.96	9.38	9	4	12
19			84	73	76	70	29.86	29.97	9.68	9	4	13
20			82	73	76	74	29.87	29.98	9.74	8	4	12
21			81	73	76	77	29.88	29.99	9.71	6	3	13
22			81	73	75	78	29.90	30.00	9.23	6	3	13
23			80	73	75	81	29.90	30.00	9.39	5	3	15
24			79	73	75	82	29.90	30.00	9.42	4	3	15

# HOUSTON, TX JULY Temperatures



# HOUSTON, TX JULY Precipitation







**JULY 2006  
HOUSTON, TX**

**LOCAL CLIMATOLOGICAL DATA  
NOAA, National Climatic Data Center**

*I certify that this is an official publication of the National Oceanic and Atmospheric Administration (NOAA). It is compiled using information from weather observing sites operated by NOAA-National Weather Service / Department Of Transportation-Federal Aviation Administration and received at the National Climatic Data Center (NCDC), Asheville, North Carolina 28801.*

*Thomas R. Karl*  
**DIRECTOR**

NCDC now offers an annual online subscription for the **Edited Local Climatological Data Publication**. When you purchase this subscription service, you will have **immediate online access** to all previous publications back to July 1996 and all publications thereafter until the expiration of the subscription. Your subscription is valid for one year after purchase. **The total cost for online delivery (including back issues) is significantly less than the cost for offline delivery.** To order this and other subscriptions online with your credit card, go to: **www.ncdc.noaa.gov** and choose subscriptions.

We welcome your questions or comments, please contact us at:

Toll Free Number (866) 742-3322 (voice)

Fax Number : (304) 726-4409

TDD : (828) 271-4010

or Email : [ncdc.info@noaa.gov](mailto:ncdc.info@noaa.gov)

Local Climatological Data is available at [www.ncdc.noaa.gov](http://www.ncdc.noaa.gov)

United States  
Department of Commerce

National Oceanic and  
Atmospheric Administration

National Environmental Satellite  
and Atmospheric Administration

For address correction, please return a photocopy of this page to Subscription Services indicating changes

NCDC Subscription Services Center  
310 State Route 956 Building 300  
Rocket Center, WV 26726

OFFICIAL BUSINESS, PENALTY FOR PRIVATE USE \$300

FIRST CLASS  
POSTAGE AND FEES PAID  
NOAA  
PERMIT G-19