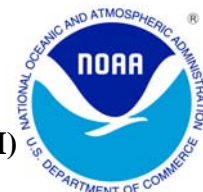




MAY 2007 LOCAL CLIMATOLOGICAL DATA

NOAA, National Climatic Data Center

HOUSTON, TX
G BUSH INTERCONTINENTAL AP/HOUSTON AP (KIAH)
 Lat:29° 59'N Long: 95° 21'W Elev (Ground) 94 Feet
 Time Zone : CENTRAL WBAN: 12960 ISSN#: 0198-5094



Date 1	Temperature °F						Deg Days BASE 65°		WEATHER 10	SNOW/ICE ON GND(IN)		PRECIPITATION ON GND(IN)		PRESSURE (INCHES OF HG)		WIND SPEED = MPH DIR = TENS OF DEGREES								Date 24
	MAXIMUM 2	MINIMUM 3	AVERAGE 4	DEP FROM NORMAL 5	AVERAGE DEW PT 6	AVERAGE WET BULB 7	HEATING 8	COOLING 9		0600 LST 11	1200 LST 12	2400 LST 13	2400 LST 14	AVERAGE STATION 15	AVERAGE SEA LEVEL 16	RESULTANT SPEED 17	RES DIR 18	AVERAGE SPEED 19	MAXIMUM					
																			5-SEC		2-MIN			
01	83	65	74	2	67	70	0	9	RA BR	0		0.0	T	29.79	29.91	10.2	15	10.2	28	14	22	15	01	
02	85	71	78	5	68	71	0	13	RA	0		0.0	0.02	29.74	29.86	8.5	13	11.5	25	34	22	34	02	
03	83	65	74	1	66	68	0	9	TS TSRA RA FG BR	0		0.0	2.28	29.70	29.83	7.1	12	8.8	26	09	24	09	03	
04	85	70	78	5	72	74	0	13	BR HZ	0		0.0	0.00	29.71	29.83	6.4	14	6.9	21	14	18	13	04	
05	86	76	81	8	72	74	0	16	RA	0		0.0	T	29.67	29.79	14.4	14	14.7	30	14	24	14	05	
06	85	76	81	7	72	74	0	16		0		0.0	0.00	29.78	29.87	16.5	13	16.6	30	13	25	13	06	
07	88	71	80	6	70	73	0	15		0		0.0	0.00	29.92	30.01	10.8	12	11.1	23	13	22	14	07	
08	87	69	78	4	69	72	0	13	BR HZ	0		0.0	0.00	29.91	30.02	7.2	14	7.9	20	13	16	12	08	
09	85	69	77	3	62	68	0	12	BR	0		0.0	0.00	29.88	30.00	4.1	17	5.0	17	13	15	16	09	
10	86	63	75	0	62	66	0	10	TSRA RA BR	0		0.0	2.25	29.80	29.93	1.8	18	6.3	44*	25	33*	23	10	
11	82	64	73	-2	63	67	0	8	RA BR	0		0.0	0.01	29.85	29.96	2.6	06	4.4	18	04	17	05	11	
12	90	65	78	3	64	68	0	13		0		0.0	0.00	29.89	30.00	1.8	01	3.8	14	05	12	05	12	
13	93*	69	81	6	66	70	0	16	TS TSRA RA BR HZ	0		0.0	T	29.92	30.03	0.6	33	3.2	24	21	17	21	13	
14	92	69	81*	6	66	70	0	16	TS TSRA RA BR HZ	0		0.0	0.12	29.91	30.03	1.6	10	4.0	23	15	20	14	14	
15	91	67	79	3	66	70	0	14	TSRA RA BR HZ	0		0.0	0.78	29.91		1.7	18	3.1	23	27	20	27	15	
16	85	67	76	0	66	69	0	11	BR	0		0.0	0.00	29.95	30.06	6.6	36	8.7	22	03	16	36	16	
17	82	62	72	-5	53	61	0	7		0		0.0	0.00	30.03	30.14	7.9	04	8.2	24	04	20	07	17	
18	82	61	72	-5	51	60	0	7		0		0.0	0.00	30.04	30.15	6.0	06	7.2	24	11	17	10	18	
19	83	58*	71*	-6	52	60	0	6		0		0.0	0.00	30.03	30.15	3.9	06	5.9	20	02	15	04	19	
20	83	61	72	-5	58	63	0	7		0		0.0	0.00	29.95	30.07	5.3	12	6.4	20	13	16	14	20	
21	83	63	73	-4	65	68	0	8	TSRA RA BR HZ	0		0.0	0.11	29.86	29.99	7.3	14	8.4	24	13	20	14	21	
22	80	66	73	-4	65	68	0	8	TSRA RA FG BR HZ	0		0.0	1.29	29.83	29.95	8.6	12	10.3	23	12	20	12	22	
23	86	70	78	1	70	73	0	13	BR	0		0.0	0.00	29.89	29.99	11.1	13	11.9	26	14	24	14	23	
24	87	72	80	3	69	72	0	15		0		0.0	0.00	29.98	30.08	11.3	13	11.6	26	14	22	15	24	
25	85	71	78	0	67	71	0	13	RA	0		0.0	T	29.96	30.08	12.6	11	13.2	26	14	24	14	25	
26	78	70	74	-4	69	70	0	9	TSRA RA BR	0		0.0	1.36	29.92	30.04	6.0	12	6.9	26	14	23	14	26	
27	84	69	77	-1	68	70	0	12	TS TSRA RA BR	0		0.0	0.16	29.88	30.01	2.6	13	4.9	30	26	24	26	27	
28	78	69	74	-4	69	70	0	9	TSRA RA FG+ BR	0		0.0	1.47	29.86	29.98	7.7	10	8.3	28	14	22	14	28	
29	88	69	79	1	70	72	0	14	TS RA FG+ BR HZ	0		0.0	0.03	29.82	29.94	3.9	11	6.2	18	12	15	13	29	
30	89	70	80	1	69	72	0	15	TS TSRA RA	0		0.0	T	29.85	29.94	4.5	12	6.1	25	06	21	06	30	
31	89	66	78	-1	67	71	0	13		0		0.0	0.00	29.85	29.97	5.1	12	6.3	22	14	18	14	31	

85.3			67.5			76.4			☼	65.6			69.2			0.0		11.6		< MONTHLY AVERAGES TOTALS >				0.0		9.88		29.87		29.99		5.5		12		8.0		< MONTHLY AVERAGES			
-0.2			1.4			0.6				<----- DEPARTURE FROM NORMAL ----->												4.73		SUNSHINE, CLOUD, & VISIBILITY TABLES ON PAGE 3																	
DEGREE DAYS										GREATEST 24-HR PRECIPITATION : 2.30 DATE : 02-03										SEA LEVEL PRESSURE				DATE TIME																	
MONTHLY					SEASON TO DATE					GREATEST 24-HR SNOWFALL : 0.0 DATE :					MAXIMUM : 30.21				19 0953																						
TOTAL DEPARTURE					TOTAL DEPARTURE					GREATEST SNOW DEPTH : 0 DATE :					MINIMUM : 29.74				03 1553																						
HEATING :		0		-2		1341		-184		NUMBER OF -> DAYS WITH		MAXIMUM TEMP >= 90 :		4		MINIMUM TEMP <= 32 :		0		PRECIPITATION >= 0.01 INCH :		12																			
COOLING :		360		32		621		47		MAXIMUM TEMP <= 32 :		0		MINIMUM TEMP <= 0 :		0		PRECIPITATION >= 0.10 INCH :		9																					
										THUNDERSTORMS :		12		HEAVY FOG :		2		SNOWFALL >= 1.0 INCH :		0																					

MAY 2007
HOUSTON, TX

HOURLY PRECIPITATION

(WATER EQUIVALENT IN INCHES)

HOUSTON, TX (KIAH)
MAY 2007

WBAN # 12960

Date	FOR HOUR (LST) ENDING AT												Date	FOR HOUR (LST) ENDING AT												Date	Sum of Hourly Data	2400 LST Water Equiv.
	1	2	3	4	5	6	7	8	9	10	11	12		13	14	15	16	17	18	19	20	21	22	23	24			
01													01												01	T	T	
02													02												02	T	0.02	0.02
03	T	T	0.35	0.03									03			T	0.01	1.05	0.71	0.13				03	T	2.28	2.28	
04													04											04	T	0.00	0.00	
05		T											05											05	T		T	
06													06											06	T	0.00	0.00	
07													07											07	T	0.00	0.00	
08													08											08	T	0.00	0.00	
09													09											09	T	0.00	0.00	
10													10						0.39	0.44	0.64	0.35	0.41	0.02	10	T	2.25	2.25
11													11											11	T	0.01	0.01	
12													12											12	T	0.00	0.00	
13													13											13	T		T	
14													14			0.11	0.01		T					14	T	0.12	0.12	
15													15						0.18	0.60				15	T	0.78	0.78	
16													16											16	T	0.00	0.00	
17													17											17	T	0.00	0.00	
18													18											18	T	0.00	0.00	
19													19											19	T	0.00	0.00	
20													20											20	T	0.00	0.00	
21													21			0.07	0.04		T					21	T	0.11	0.11	
22					0.02	T	0.50	0.55	0.02	0.01	0.18	0.01	22											22	T	1.29	1.29	
23													23											23	T	0.00	0.00	
24													24											24	T	0.00	0.00	
25									T	T	T		25											25	T		T	
26								0.04	T	T	0.04		26	0.05	0.72	0.37	0.06	0.04	0.04					26	T	1.36	1.36	
27													27	0.05	0.06	0.05		T						27	T	0.16	0.16	
28												0.98	28	0.11	0.06	0.05	0.14		0.13					28	T	1.47	1.47	
29	0.03												29											29	T	0.03	0.03	
30													30											30	T		T	
31													31											31	T	0.00	0.00	

* Indicates sum of Hourly and Daily disagree.

MAXIMUM SHORT DURATION PRECIPITATION (See Note)

Time Period (Minutes)	5	10	15	20	30	45	60	80	100	120	150	180
Precipitation (Inches)												
Ending Date												
Ending Time (Hr/Min)												

Note : The hourly and daily precipitation totals are printed in the last 2 columns and hi-lighted in red when they disagree. NWS does not edit ASOS hourly values but may edit daily and monthly totals. Hourly, daily, and monthly totals are printed as reported by the ASOS site.

Date and time are not entered for TRACE amounts.

REFERENCE NOTES & SUPPLEMENTAL SUMMARIES

* = Extreme for the month (last occurrence if more than one).

T = Trace precipitation amount.

+ = also occurs on earlier date.

FG+ = Heavy fog, visibility .25 miles or less.

BLANK entries denote missing or unreported data.

Resultant wind is the vector sum of the wind speeds and directions divided by the number of observations.

Wind direction is recorded in tens of degrees (2 digits) clockwise from true north. '00' = calm, 'VR' = variable.

Precipitation is for the 24-hour period ending at the time indicated in the column heading.

Water Equivalent of snow on the ground is reported only when the depth is 2 or more inches.

NORMALS ARE FOR THE YEARS 1971-2000

WEATHER NOTATIONS

QUALIFIER	WEATHER PHENOMENA		
DESCRIPTOR	PRECIPITATION	OBSCURATION	OTHER
BC Patches	DZ Drizzle	BR Mist	DS Duststorm
BL Blowing	GR Hail	DU Widespread Dust	FC Funnel Cloud
DR Low Drifting	GS Small Hail and/or Snow Pellets	FG Fog	+FC Tornado Waterspout
FZ Freezing	IC Ice Crystals	FU Smoke	PO Well-Developed Dust/Sand Whirls
MI Shallow	PL Ice Pellets	HZ Haze	
PR Partial	RA Rain	PY Spray	SQ Squalls
SH Shower(s)	SG Snow Grains	SA Sand	SS Sandstorm
TS Thunderstorm	SN Snow	VA Volcanic Ash	GL Glaze
VC In the Vicinity	UP Unkown Precipitation		

Intensity (as indicated on pages 4 to 6):
'+' = Heavy '' = Moderate '-' = Light

HOUSTON, TX MAY 2007

Ceilometer (30-second) data are used to derive cloudiness at or below 12,000 feet. This cloudiness is the mean cloud cover detected during sunrise to sunset (SR-SS), or midnight to midnight (MN-MN).

Satellite data are used to derive cloudiness above 12,000 feet. Effective Cloud Amount is based on the cloud cover and the transparency of the clouds within the satellite field of view (approx. 31x31 miles).

Sky Condition is based on the sum (not to exceed 8) of the sunrise to sunset cloud cover below and above 12,000 feet. Both ceilometer and satellite data must be present to compute Sky Condition. Clear = 0-2 oktas, Partly Cloudy = 3-6 oktas, Cloudy = 7-8 oktas.

A Heating (Cooling) Degree Day is the difference between the average daily temperature and 65 degrees F. The HDD season begins July 1, the CDD season begins January 1.

Dew Point is the temperature to which the air must be cooled to achieve 100% relative humidity. Wet Bulb is the temperature the air would have if cooled to saturation at constant pressure by evaporation of water into it.

Snow Depth, Snowfall, and Sunshine data may come from nearby sites that the National Weather Service deems Climatologically representative of this site.

ADDITIONAL NOTES:

Date	SUNSHINE		CLOUDINESS (OKTAS)				VISIBILITY (MILES)		RESERVED
	TOTAL MINUTES	PERCENT POSSIBLE	SR-SS		MN-MN		MINIMUM	MAXIMUM	
			Sky Cover	Satellite	Sky Cover	Satellite			
01							6.00	10.00	
02							7.00	10.00	
03							0.50	10.00	
04							1.50	10.00	
05							5.00	10.00	
06							8.00	10.00	
07							8.00	10.00	
08							2.50	10.00	
09							4.00	10.00	
10							1.25	10.00	
11							6.00	10.00	
12							7.00	10.00	
13							5.00	10.00	
14							5.00	10.00	
15							3.00	10.00	
16							6.00	10.00	
17							7.00	10.00	
18							10.00	10.00	
19							10.00	10.00	
20							8.00	10.00	
21							3.00	10.00	
22							1.50	10.00	
23							4.00	10.00	
24							7.00	10.00	
25							7.00	10.00	
26							4.00	10.00	
27							6.00	10.00	
28							4.00	10.00	
29							0.25	10.00	
30							7.00	10.00	
31							10.00	10.00	
MONTHLY AVGS							5.31	10.00	
SUNSHINE (Minutes)									
Total : 0					Possible : 25401				
Percent Possible : 0									
NUMBER OF DAYS WITH : SKY CONDITION									
Clear		Partly CLDY		Cloudy		Missing			
MINIMUM VISIBILITY (MILES)									
<= .25		<= 3.0				>= 7.0			
1		8				12			

OBSERVATIONS AT 3-HOURLY INTERVALS

HOUSTON, TX
MAY 2007

KIAH

WBAN # 12960

HOUR (LST)	SKY COVER	CEILING 100's of FT.	SATELLITE		WEATHER	TEMPERATURE °F			WIND		PRESSURE (INCHES, HG)		HOUR (LST)	SKY COVER	CEILING 100's of FT.	SATELLITE		WEATHER	TEMPERATURE °F			WIND		PRESSURE (INCHES, HG)											
			Observation Time (LST)	Eff Cld Amt Oktas		VISIBILITY (MILES)	DRY BULB	DEW POINT	WET BULB	RELATIVE HUMIDITY (PCT)	SPEED (MPH)	DIRECTION Tens of Deg				STATION	SEA LEVEL		Observation Time (LST)	Eff Cld Amt Oktas	VISIBILITY (MILES)	DRY BULB	DEW POINT	WET BULB	RELATIVE HUMIDITY (PCT)	SPEED (MPH)	DIRECTION Tens of Deg	STATION	SEA LEVEL						
SUNRISE: 0539						MAY 01						SUNSET: 1858						SUNRISE: 0534						MAY 07						SUNSET: 1902					
03	BKN	250					68	66	67	93	8	13	29.80	29.91	03	BKN	030					76	71	73	85	11	12	29.85	29.96						
06	BKN	080			BR		71	68	69	90	6	17	29.81	29.92	06	BKN	250					75	71	72	87	9	11	29.88	29.98						
09	OVC	030					76	69	71	79	11	17	29.85	29.96	09	SCT	250					81	70	74	69	15	14	29.90	30.01						
12	OVC	043					79	68	72	69	10	15	29.84	29.95	12	BKN	250					86	70	75	59	13	11	29.95	30.06						
15	BKN	250					82	65	71	56	22	15	29.76	29.87	15	BKN	250					86	69	74	57	13	12	29.92	30.02						
18	OVC	250					76	64	68	67	13	15	29.77	29.88	18	SCT	250					82	69	73	65	14	12	29.90	30.01						
21	OVC	250					73	67	69	82	11	11	29.79	29.90	21	FEW	250					74	69	71	84	7	14	29.95	30.06						
24	OVC	250					73	67	69	82	11	16	29.76	29.86	24	SCT	250					73	69	70	87	3	17	29.98	30.10						
SUNRISE: 0538						MAY 02						SUNRISE: 1859						SUNRISE: 0533						MAY 08						SUNSET: 1903					
03	OVC	250					73	68	70	84	5	18	29.75	29.85	03	BKN	250					73	69	70	87	3	22	29.94	30.05						
06	OVC	250					72	68	69	87	8	16	29.73	29.84	06	BKN	250			BR		69	68	68	97	0	00	29.95	30.06						
09	OVC	025					76	68	71	76	7	17	29.78	29.88	09	BKN	250					80	71	74	74	10	15	29.96	30.06						
12	BKN	250					83	66	72	57	11	16	29.75	29.86	12	BKN	240					85	69	74	59	14	14	29.95	30.06						
15	BKN	045					80	69	73	69	21	11	29.72	29.83	15	BKN	250					86	65	72	50	15	12	29.87	29.98						
18	BKN	250					78	67	71	69	21	13	29.68	29.79	18	BKN	250					82	68	73	63	11	14	29.85	29.96						
21	BKN	250					73	68	70	84	11	12	29.74	29.84	21	FEW	250					74	69	71	84	7	11	29.90	30.01						
24	OVC	075			-RA		73	69	70	87	21	34	29.83	29.94	24	SCT	250					73	68	70	84	3	21	29.92	30.02						
SUNRISE: 0537						MAY 03						SUNRISE: 1859						SUNRISE: 0532						MAY 09						SUNSET: 1903					
03	OVC	039			TS+RA BR		65	63	64	93	9	10	29.79	29.90	03	BKN	250			BR		71	68	69	90	0	00	29.91	30.01						
06	OVC	250					65	63	64	93	8	11	29.71	29.82	06	BKN	250			BR		70	68	69	93	0	00	29.90	30.01						
09	OVC	250					70	64	66	81	9	11	29.76	29.86	09	BKN	250					77	67	70	71	0	00	29.93	30.04						
12	BKN	250					80	69	73	69	13	12	29.70	29.81	12	OVC	250					81	64	70	56	7	19	29.93	30.04						
15	BKN	250					81	70	74	69	11	15	29.67	29.78	15	BKN	250					84	59	68	43	10	12	29.84	29.95						
18	OVC	060			TS+RA FG		71	69	70	93	9	02	29.69	29.80	18	SCT	250					82	57	67	43	7	16	29.81	29.92						
21	OVC	250					70	68	69	93	9	12	29.73	29.84	21	FEW	250					75	55	63	50	5	18	29.86	29.97						
24	BKN	250			BR		70	68	69	93	0	00	29.70	29.81	24	BKN	250					71	58	63	64	7	23	29.89	30.00						
SUNRISE: 0536						MAY 04						SUNRISE: 1900						SUNRISE: 0532						MAY 10						SUNSET: 1904					
03	BKN	032			BR		71	70	70	97	3	15	29.70	29.81	03	BKN	250					65	60	62	84	0	00	29.83	29.94						
06	OVC	027			BR		73	71	72	93	0	00	29.73	29.84	06	BKN	250					68	61	64	78	0	00	29.81	29.92						
09	OVC	033			BR		78	74	75	88	5	17	29.76	29.86	09	SCT	250					76	62	67	62	0	00	29.89	29.99						
12	OVC	100			HZ		81	73	75	77	6	18	29.75	29.85	12	SCT	250					81	57	66	44	7	VR	29.84	29.95						
15	BKN	090					85	74	77	70	9	16	29.71	29.82	15	BKN	250					84	60	69	44	6	20	29.79	29.90						
18	BKN	250					80	72	75	77	14	11	29.68	29.78	18	BKN	250					79	65	70	62	15	11	29.74	29.85						
21	BKN	250					76	72	73	87	13	12	29.72	29.83	21	OVC	060			-TSRA		64	60	62	87	5	13	29.81	29.92						
24	OVC	250					77	73	74	88	13	13	29.71	29.82	24	OVC	100					65	63	64	93	6	06	29.83	29.94						
SUNRISE: 0536						MAY 05						SUNRISE: 1901						SUNRISE: 0531						MAY 11						SUNSET: 1905					
03	OVC	033					76	73	74	90	9	15	29.67	29.77	03	BKN	130					64	62	63	93	6	06	29.80	29.90						
06	OVC	030					77	73	74	88	11	14	29.68	29.79	06	SCT	250					64	62	63	93	0	00	29.83	29.94						
09	BKN	250					80	70	73	72	18	15	29.70	29.81	09	BKN	250					71	63	66	76	3	VR	29.88	29.99						
12	BKN	250					85	72	76	65	21	14	29.68	29.78	12	BKN	065					76	64	68	67	3	09	29.88	29.99						
15	BKN	250					84	72	76	67	18	15	29.65	29.76	15	BKN	250					81	60	68	49	6	VR	29.84	29.95						
18	OVC	023					79	73	75	82	13	12	29.65	29.76	18	SCT	250					80	57	66	45	0	00	29.83	29.94						
21	OVC	025					79	72	74	79	15	14	29.68	29.79	21	BKN	250					70	68	69	93	5	12	29.89	30.00						
24	OVC	035					78	72	74	82	8	16	29.73	29.83	24	SCT	250					68	66	67	93	0	00	29.89	30.00						
SUNRISE: 0535						MAY 06						SUNRISE: 1901						SUNRISE: 0530						MAY 12						SUNSET: 1905					
03	BKN	250					76	71	73	85	8	12	29.72	29.82	03	SCT	250					67	64	65	90	3	34	29.87	29.98						
06	BKN	075					77	71	73	82	13	12	29.74	29.85	06	FEW	250					65	63	64	93	0	00	29.89	30.00						
09	BKN	250					81	71	74	72	18	13	29.75	29.85	09	CLR	NC					77	66	70	69	6	VR	29.94	30.05						
12	BKN	250					83	73	76	72	21	11	29.78	29.88	12	SCT	050					86	63	71	46	8	04	29.92	30.03						
15	OVC	030					82	73	76	74	21	12	29.77	29.88	15	FEW	060					86	61	70	43	7	03	29.87	29.98						
18	OVC	026					80	73	75	79	21	13	29.76	29.87	18	SCT	250					86	60	69	42	5	03	29.86	29.97						
21	OVC	030					78	73	75	85	15	12	29.81	29.92	21	SCT	250					74	67	69	79	0	00	29.91	30.01						
24	SCT	031					77	72	74	85	11	12	29.85	29.96	24	SCT	250					75	65	69	71	6	25	29.91	30.02						

OBSERVATIONS AT 3-HOURLY INTERVALS

HOUSTON, TX
MAY 2007

KIAH

WBAN # 12960

HOUR (LST)	SKY COVER	CEILING 100's of FT.	SATELLITE		WEATHER	TEMPERATURE °F			WIND SPEED (MPH) DIRECTION Tens of Deg	PRESSURE (INCHES, HG)		HOUR (LST)	SKY COVER	CEILING 100's of FT.	SATELLITE		WEATHER	TEMPERATURE °F			WIND SPEED (MPH) DIRECTION Tens of Deg	PRESSURE (INCHES, HG)							
			Observation Time (LST)	Eff Cld Amt Oktas		VISIBILITY (MILES)	DRY BULB	DEW POINT		WET BULB	RELATIVE HUMIDITY (PCT)				STATION	SEA LEVEL		Observation Time (LST)	Eff Cld Amt Oktas	VISIBILITY (MILES)		DRY BULB	DEW POINT	WET BULB	RELATIVE HUMIDITY (PCT)	STATION	SEA LEVEL		
SUNRISE: 0530						MAY 13						SUNSET: 1906																	
03	CLR	NC			9.00	BR	71	65	67	81	0	00	29.91	30.02	03	FEW	250			10.00	61	54	57	78	5	01	30.03	30.15	
06	FEW	250			5.00		70	66	67	87	0	00	29.94	30.05	06	FEW	250			10.00	58	52	55	81	6	02	30.06	30.16	
09	CLR	NC			9.00		81	68	72	65	0	00	29.97	30.08	09	FEW	250			10.00	72	50	60	46	10	09	30.10	30.21	
12	SCT	049			10.00		89	65	73	45	3	VR	29.95	30.05	12	FEW	250			10.00	79	52	63	39	5	04	30.06	30.18	
15	SCT	060			10.00		92	63	73	38	7	02	29.88	29.99	15	CLR	NC			10.00	82	49	63	32	10	04	30.01	30.12	
18	BKN	250			10.00		79	66	71	65	6	12	29.90	30.01	18	FEW	250			10.00	78	49	61	36	8	05	29.98	30.09	
21	FEW	250			9.00		73	68	70	84	0	00	29.92	30.03	21	FEW	250			10.00	67	55	60	66	7	13	30.01	30.12	
24	SCT	250			9.00		71	67	68	87	0	00	29.93	30.04	24	SCT	250			10.00	64	58	61	81	0	00	30.02	30.12	
SUNRISE: 0529						MAY 14						SUNRISE: 0526						MAY 19						SUNSET: 1910					
03	FEW	250			7.00	BR	72	67	69	84	0	00	29.91	30.01	03	FEW	250			10.00	62	57	59	84	0	00	29.98	30.10	
06	CLR	NC			6.00		69	67	68	93	0	00	29.92	30.03	06	SCT	250			8.00	61	57	59	87	5	05	30.01	30.12	
09	CLR	NC			10.00		83	66	72	57	5	25	29.95	30.06	09	SCT	250			10.00	75	59	65	58	6	10	30.02	30.13	
12	SCT	050			10.00		90	65	73	44	0	00	29.94	30.05	12	SCT	250			10.00	79	58	66	49	11	09	29.98	30.10	
15	BKN	055			10.00		91	64	73	41	0	00	29.89	30.00	15	BKN	250			10.00	80	57	66	45	11	14	29.94	30.05	
18	BKN	250			10.00		79	68	72	69	9	08	29.88	29.99	18	BKN	250			10.00	77	58	65	52	11	12	29.91	30.02	
21	FEW	250			10.00		73	69	70	87	7	VR	29.92	30.03	21	BKN	250			10.00	70	58	63	66	6	16	29.91	30.01	
24	FEW	250			10.00		71	66	68	84	6	11	29.93	30.03	24	SCT	110			10.00	64	59	61	84	0	00	29.91	30.02	
SUNRISE: 0528						MAY 15						SUNRISE: 0525						MAY 20						SUNSET: 1910					
03	SCT	250			8.00	BR	70	66	67	87	0	00	29.91		03	BKN	250			9.00	64	60	62	87	0	00	29.88	29.98	
06	SCT	250			4.00		68	66	67	93	0	00	29.93	30.04	06	SCT	250		BR	6.00	64	61	62	90	5	02	29.90	30.01	
09	CLR	NC			8.00		80	70	73	72	3	VR	29.96	30.07	09	BKN	250			8.00	77	66	70	69	6	VR	29.92	30.03	
12	SCT	250			10.00		87	63	71	45	5	VR	29.95		12	BKN	100			8.00	79	68	72	69	11	12	29.90	30.01	
15	BKN	250			10.00		89	63	72	42	0	00	29.89		15	BKN	037		-TSRA	5.00	74	69	71	84	9	13	29.84	29.95	
18	BKN	250			10.00		84	67	73	57	16	16	29.86		18	BKN	250			7.00	77	68	71	74	14	13	29.84	29.94	
21	SCT	110			8.00		72	70	71	93	0	00	29.92		21	BKN	250			8.00	75	67	70	76	8	15	29.85	29.96	
24	CLR	NC			7.00		71	69	70	93	0	00	29.93	30.04	24	OVC	250		HZ	6.00	75	68	70	79	10	15	29.84	29.95	
SUNRISE: 0528						MAY 16						SUNRISE: 0525						MAY 21						SUNSET: 1911					
03	SCT	250			7.00	BR	73	69	70	87	6	23	29.93	30.04	03	BKN	250		HZ	6.00	74	68	70	82	8	14	29.79	29.90	
06	BKN	250			6.00		72	68	69	87	6	28	29.94	30.05	06	OVC	100		-RA	4.00	73	68	70	84	7	13	29.81	29.91	
09	OVC	012			10.00		73	67	69	82	14	34	29.98	30.09	09	BKN	100		-RA	8.00	68	65	66	90	8	10	29.85	29.96	
12	BKN	250			10.00		79	67	71	67	9	01	29.98	30.10	12	BKN	060			10.00	73	66	69	79	14	11	29.88	29.99	
15	BKN	250			10.00		84	67	73	57	8	35	29.93	30.04	15	BKN	075			10.00	79	64	69	60	17	11	29.84	29.95	
18	BKN	250			10.00		79	64	69	60	15	03	29.92	30.03	18	SCT	250			10.00	78	63	68	60	14	11	29.83	29.93	
21	FEW	250			10.00		71	62	65	73	7	02	29.97	30.08	21	FEW	250			10.00	72	65	68	79	8	12	29.86	29.96	
24	BKN	250			10.00		67	60	63	78	3	VR	29.98	30.09	24	BKN	035			7.00	72	69	70	90	7	10	29.85	29.96	
SUNRISE: 0527						MAY 17						SUNRISE: 0524						MAY 22						SUNSET: 1912					
03	SCT	250			10.00		64	58	61	81	3	02	30.00	30.11	03	SCT	250		BR	6.00	71	69	70	93	5	08	29.83	29.94	
06	BKN	250			10.00		63	56	59	78	7	05	30.03	30.14	06	SCT	050		BR	4.00	71	69	70	93	0	00	29.87	29.98	
09	SCT	250			10.00		73	49	60	43	15	05	30.06	30.18	09	SCT	035			10.00	81	71	74	72	15	13	29.91	30.02	
12	SCT	250			10.00		77	48	61	36	14	04	30.06	30.16	12	BKN	250			10.00	84	71	75	65	17	14	29.90	30.01	
15	SCT	250			10.00		80	51	63	37	9	36	30.02	30.13	15	BKN	130			10.00	85	71	75	63	17	12	29.88	29.98	
18	SCT	250			10.00		78	48	61	35	11	03	30.00	30.11	18	BKN	130			10.00	81	71	74	72	18	15	29.89	29.99	
21	BKN	250			10.00		71	52	60	51	6	02	30.03	30.14	21	FEW	021			10.00	77	71	73	82	14	13	29.92	30.03	
24	SCT	250			10.00		65	55	59	70	3	05	30.06	30.17	24	BKN	035			10.00	76	70	72	82	13	14	29.93	30.03	
SUNRISE: 0527						MAY 18						SUNRISE: 0524						MAY 23						SUNSET: 1913					
03	BKN	250			10.00		62	53	57	73	0	00	30.03	30.14	03	SCT	250			10.00	75	70	72	85	10	13	29.92	30.03	
06	BKN	250			10.00		63	52	57	68	8	01	30.03	30.15	06	BKN	250			7.00	73	70	71	90	8	10	29.96	30.07	
09	SCT	250			10.00		75	50	61	42	13	09	30.08	30.19	09	BKN	250			10.00	80	70	73	72	8	15	29.98	30.10	
12	SCT	250			10.00		80	50	63	35	14	06	30.08	30.19	12	BKN	250			10.00	86	69	74	57	18	12	30.00	30.10	
15	SCT	250			10.00		81	49	63	33	9	36	30.02	30.13	15	BKN	250			10.00	85	66	72	53	16	14	29.96	30.07	
18	SCT	250			10.00		79	49	62	35	7	03	30.01	30.12	18	BKN	250			10.00	81	68	72	65	15	13	29.96	30.06	
21	SCT	250			10.00		68	53	59	59	5	03	30.03	30.15	21	SCT	250			10.00	75	68	70	79	8	11	30.01	30.12	
24	FEW	250			10.00		66	54	59	65	0	00	30.05	30.16	24	BKN	250			10.00	74	70	71	87	5	13	30.02	30.13	

OBSERVATIONS AT 3-HOURLY INTERVALS

HOUSTON, TX
MAY 2007

KIAH

WBAN # 12960

HOUR (LST)	SKY COVER	CEILING 100's of FT.	SATELLITE		WEATHER	TEMPERATURE °F			WIND		PRESSURE (INCHES, HG)																																																																																																				
			Observation Time (LST)	Eff Cl'd Amt Oktas		VISIBILITY (MILES)	DRY BULB	DEW POINT	WET BULB	RELATIVE HUMIDITY (PCT)	SPEED (MPH)	DIRECTION Tens of Deg	STATION	SEA LEVEL																																																																																																	
SUNRISE: 0523						MAY 25						SUNSET: 1913																																																																																																			
03	BKN	250				72	69	70	90	8	09	29.98	30.09	06	BKN	250				72	69	70	90	10	09	29.98	30.09	09	BKN	110			-RA	76	70	72	82	11	11	30.01	30.12	12	BKN	250				85	67	73	55	18	12	29.98	30.09	15	BKN	070				81	65	71	58	17	12	29.96	30.07	18	BKN	250				79	66	71	65	18	13	29.95	30.05	21	BKN	250				75	67	70	76	13	11	29.94	30.05	24	OVC	250				75	67	70	76	9	12	29.95	30.06
SUNRISE: 0523						MAY 26						SUNSET: 1914																																																																																																			
03	BKN	250				72	68	69	87	5	11	29.93	30.04	06	BKN	250				73	69	70	87	13	10	29.93	30.03	09	OVC	070				75	70	72	85	11	14	29.96	30.07	12	OVC	070				76	68	71	76	18	14	29.96	30.06	15	OVC	030			TSRA BR	70	68	69	93	3	14	29.94	30.05	18	BKN	130			-RA	71	69	70	93	6	12	29.90	30.01	21	OVC	250				71	69	70	93	0	00	29.90	30.01	24	BKN	250			BR	71	68	69	90	0	00	29.94	30.04
SUNRISE: 0523						MAY 27						SUNSET: 1915																																																																																																			
03	BKN	250				70	68	69	93	0	00	29.90	30.01	06	SCT	250			BR	70	68	69	93	0	00	29.90	30.01	09	SCT	250				79	70	73	74	10	14	29.92	30.03	12	BKN	250				83	67	72	59	13	11	29.92	30.03	15	OVC	100			-RA	70	66	67	87	0	00	29.93	30.04	18	BKN	250				77	67	70	71	10	12	29.84	29.95	21	SCT	250				73	69	70	87	0	00	29.90	30.00	24	BKN	250				71	68	69	90	3	VR	29.90	30.01
SUNRISE: 0522						MAY 28						SUNSET: 1915																																																																																																			
03	BKN	250				70	68	69	93	3	11	29.88	29.99	06	BKN	120				70	68	69	93	8	09	29.88	29.98	09	OVC	250				73	66	69	79	8	12	29.91	30.01	12	OVC	017			TSRA BR	72	69	70	90	11	14	29.90	30.01	15	OVC	080			RA BR	72	70	71	93	8	10	29.88	29.98	18	OVC	025				72	69	70	90	9	11	29.84	29.95	21	BKN	250				72	68	69	87	7	11	29.85	29.96	24	OVC	016				72	69	70	90	7	02	29.86	29.97
SUNRISE: 0522						MAY 29						SUNSET: 1916																																																																																																			
03	OVC	011				70	68	69	93	6	03	29.82	29.93	06	BKN	003			BR	70	68	69	93	3	02	29.83	29.94	09	OVC	250			HZ	76	71	73	85	3	35	29.87	29.98	12	BKN	250				82	69	73	65	6	27	29.86	29.96	15	BKN	250				85	71	75	63	6	15	29.80	29.91	18	SCT	250				83	70	74	65	9	11	29.78	29.89	21	FEW	250				75	72	73	90	10	13	29.80	29.91	24	SCT	250				74	71	72	90	3	12	29.82	29.93
SUNRISE: 0522						MAY 30						SUNSET: 1916																																																																																																			
03	SCT	250				72	70	71	93	0	00	29.81	29.92	06	SCT	015				71	69	70	93	0	00	29.83	29.93	09	BKN	250				81	71	74	72	9	16	29.84	29.95	12	BKN	250				86	68	74	55	8	16	29.85	29.96	15	BKN	070				89	72	77	57	13	12	29.80	29.91	18	BKN	130				73	67	69	82	16	10	29.84	29.95	21	BKN	250				74	67	69	79	0	00	29.83	29.94	24	BKN	250				70	67	68	90	9	04	29.89	30.00

HOUR (LST)	SKY COVER	CEILING 100's of FT.	SATELLITE		WEATHER	TEMPERATURE °F			WIND		PRESSURE (INCHES, HG)																																																																																																				
			Observation Time (LST)	Eff Cl'd Amt Oktas		VISIBILITY (MILES)	DRY BULB	DEW POINT	WET BULB	RELATIVE HUMIDITY (PCT)	SPEED (MPH)	DIRECTION Tens of Deg	STATION	SEA LEVEL																																																																																																	
SUNRISE: 0521						MAY 31						SUNSET: 1917																																																																																																			
03	SCT	250				69	64	66	84	0	00	29.88	29.98	06	BKN	250				68	64	66	87	0	00	29.90	30.01	09	BKN	250				80	68	72	67	0	00	29.90	30.01	12	BKN	250				86	67	73	53	7	14	29.88	29.99	15	BKN	250				87	66	73	50	7	13	29.83	29.94	18	BKN	250				85	70	75	61	15	13	29.82	29.93	21	SCT	250				77	70	72	79	8	15	29.85	29.96	24	SCT	250				75	71	72	87	5	16	29.84	29.95

3-HOURLY OBSERVATION NOTES

Sky Cover is the amount of the sky obscured. CLR or SKC = 0, FEW = 1/8-2/8, SCT = 3/8-4/8, BKN = 5/8-7/8, OVC = 8/8, W = Vertical Visibility = 8/8

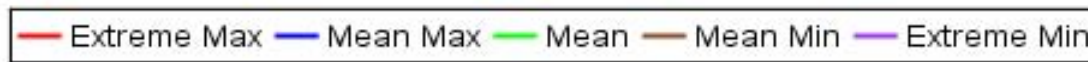
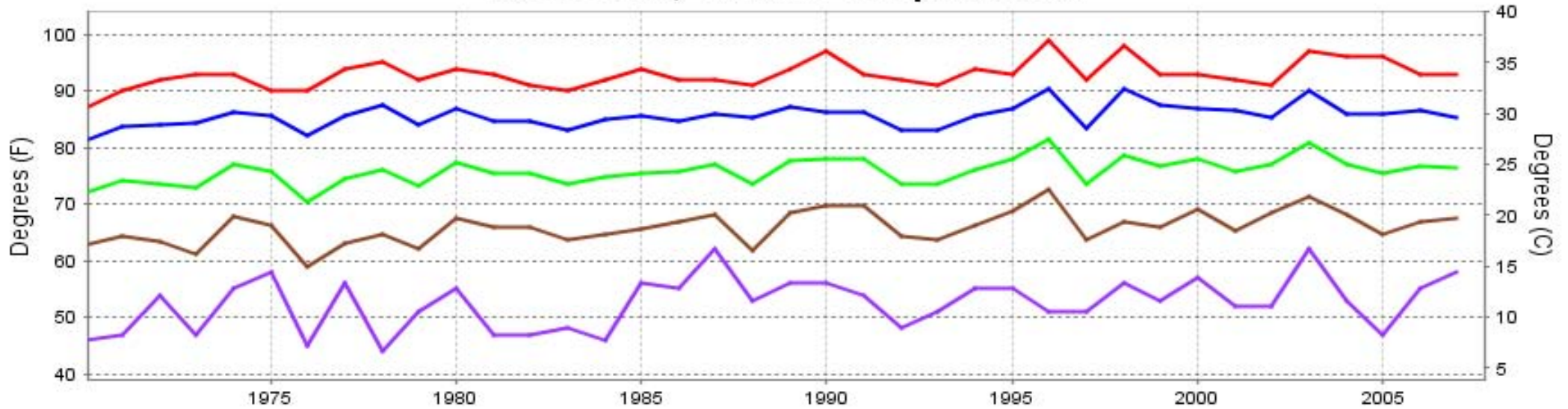
Ceiling is reported in hundreds of feet above ground level for clouds at or below 12,000 feet. NC = No Ceiling detected.

& = Original observation contained additional weather elements. See page 3 for additional notes.

SUMMARY BY HOUR

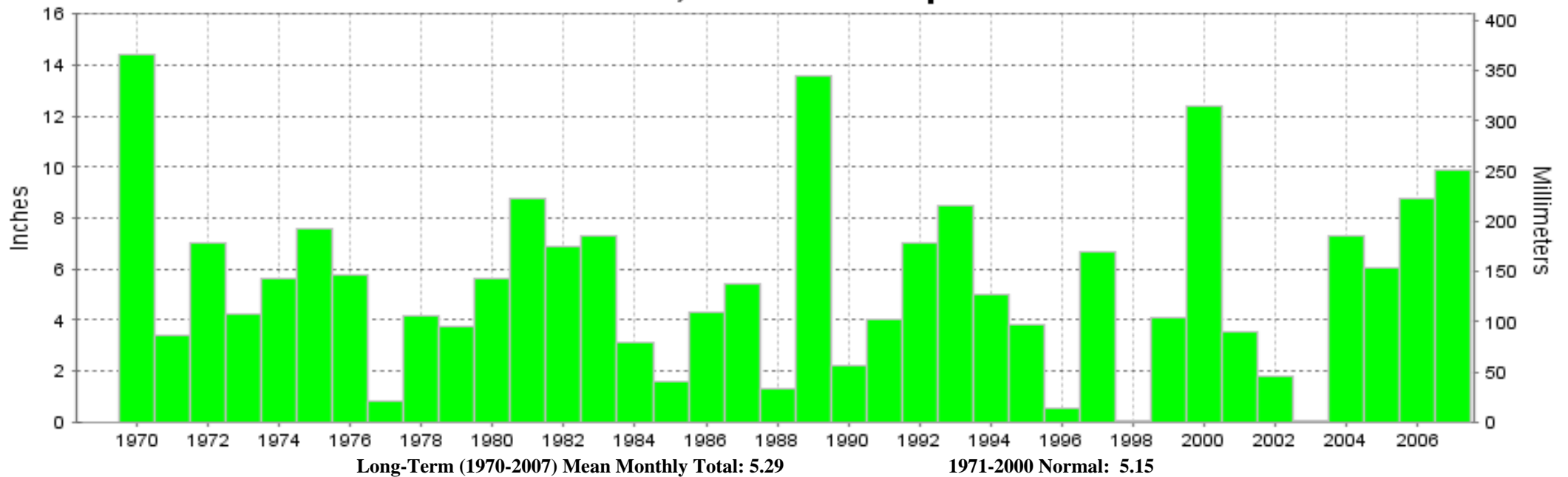
HOUR (LST)	AVERAGES										RESULTANT WIND (MPH)	
	CEILOMETER	EFF CLD AMT	DRY BULB	DEW POINT	WET BULB	RELATIVE HUMIDITY	PRESSURE (Inches, HG)		VISIBILITY (Miles)	WIND SPEED (MPH)	SPEED	DIRECTION
							STATION	SEA LEVEL				
01			71	66	68	85	29.88	29.99	8.77	5	4	12
02			70	66	68	86	29.87	29.98	8.68	5	3	12
03			70	66	67	87	29.87	29.98	8.19	4	4	12
04			69	66	67	88	29.87	29.97	8.15	4	3	12
05			69	66	67	88	29.87	29.98	8.13	4	4	12
06			69	66	67	88	29.88	29.99	6.86	5	5	11
07			72	66	68	84	29.90	30.01	7.31	7	4	11
08			74	66	69	78	29.91	30.02	8.03	8	6	11
09			77	66	70	71	29.91	30.02	9.13	8	6	11
10			79	66	70	65	29.91	30.02	9.68	10	6	11
11			81	65	71	61	29.91	30.02	9.45	10	7	10
12			82	65	71	59	29.90	30.01	9.45	11	8	10
13			83	65	71	57	29.89	30.00	9.26	11	7	10
14			83	65	71	57	29.88	29.98	9.32	10	7	10
15			82	65	71	57	29.86	29.97	9.35	11	8	10
16			82	65	71	59	29.85	29.95	9.32	12	8	10
17			80	65	70	62	29.84	29.95	9.35	12	8	10
18			79	65	70	64	29.84	29.95	9.44	12	9	10
19			76	66	69	71	29.85	29.96	8.98	10	6	10
20			74	66	69	77	29.86	29.97	9.39	9	6	10
21			73	66	69	80	29.88	29.99	9.55	7	6	11
22			72	66	69	81	29.89	30.00	9.10	7	6	11
23			72	66	68	82	29.89	30.00	9.03	7	4	11
24			72	66	68	84	29.89	30.00	8.90	6	3	12

HOUSTON, TX MAY Temperatures



Long-Term (1970-2007) Mean: 75.8
1971-2000 Normal: 75.8

HOUSTON, TX MAY Precipitation



Long-Term (1970-2007) Mean Monthly Total: 5.29

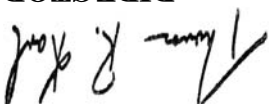
1971-2000 Normal: 5.15



MAY 2007
HOUSTON, TX

LOCAL CLIMATOLOGICAL DATA NOAA, National Climatic Data Center

I certify that this is an official publication of the National Oceanic and Atmospheric Administration (NOAA). It is compiled using information from weather observing sites operated by NOAA-National Weather Service / Department Of Transportation-Federal Aviation Administration and received at the National Climatic Data Center (NCDC), Asheville, North Carolina 28801.


DIRECTOR

NCDC now offers an annual online subscription for the **Edited Local Climatological Data Publication**. When you purchase this subscription service, you will have **immediate online access** to all previous publications back to July 1996 and all publications thereafter until the expiration of the subscription. Your subscription is valid for one year after purchase. **The total cost for online delivery (including back issues) is significantly less than the cost for offline delivery.** To order this and other subscriptions online with your credit card, go to: www.ncdc.noaa.gov and choose subscriptions.

We welcome your questions or comments, please contact us at:

Toll Free Number (866) 742-3322 (voice)

Fax Number : (304) 726-4409

TDD : (828) 271-4010

or Email : ncdc.info@noaa.gov

Local Climatological Data is available at www.ncdc.noaa.gov

United States
Department of Commerce

National Oceanic and
Atmospheric Administration

National Environmental Satellite
Atmospheric Administration

For address correction, please return a photocopy of this page to Subscription Services indicating changes

NCDC Subscription Services Center
310 State Route 956 Building 300
Rocket Center, WV 26726

OFFICIAL BUSINESS, PENALTY FOR PRIVATE USE \$300

FIRST CLASS
POSTAGE AND FEES PAID
NOAA
PERMIT G-19