



JUNE 2007 LOCAL CLIMATOLOGICAL DATA NOAA, National Climatic Data Center

HOUSTON, TX
G BUSH INTERCONTINENTAL AP/HOUSTON AP (KIAH)
 Lat:29° 59'N Long: 95° 21'W Elev (Ground) 94 Feet
 Time Zone : CENTRAL WBAN: 12960 ISSN#: 0198-5094



Date 1	Temperature °F						Deg Days BASE 65°		WEATHER 10	SNOW/ICE ON GND(IN)		PRECIPITATION ON GND(IN)		PRESSURE (INCHES OF HG)		WIND SPEED = MPH DIR = TENS OF DEGREES								Date 24
	MAXIMUM 2	MINIMUM 3	AVERAGE 4	DEP FROM NORMAL 5	AVERAGE DEW PT 6	AVERAGE WET BULB 7	HEATING 8	COOLING 9		0600 LST 11	1200 LST 12	2400 LST 13	2400 LST 14	AVERAGE STATION 15	AVERAGE SEA LEVEL 16	RESULTANT SPEED 17	RES DIR 18	AVERAGE SPEED 19	MAXIMUM					
																			5-SEC		2-MIN			
01	88	70	79	0	69	72	0	14	BR	0		0.0	0.00	29.77	29.89	7.5	14	7.6	20	13	17	13	01	
02	89	71	80	0	70	73	0	15	RA BR HZ	0		0.0	T	29.75	29.87	1.8	14	4.0	18	15	15	15	02	
03	92	74	83	3	71	74	0	18	TSRA RA	0		0.0	0.02	29.73	29.84	4.1	25	5.9	18	25	14	24	03	
04	92	72	82	2	67	72	0	17	RA	0		0.0	0.06	29.71	29.83	2.8	29	5.0	16	28	14	29	04	
05	90	70	80	0	68	72	0	15		0		0.0	0.00	29.75	29.86	2.0	18	3.4	13	15	10	16	05	
06	92	69*	81	1	69	73	0	16		0		0.0	0.00	29.69	29.82	8.3	17	8.6	21	15	17	15	06	
07	93	79	86	6	74	77	0	21		0		0.0	0.00	29.68	29.78	14.2	17	14.4	26	19	21	14	07	
08	92	79	86	6	76	78	0	21	RA	0		0.0	T	29.86	29.95	9.7	15	10.4	24	18	18	14	08	
09	93	77	85	5	74	77	0	20	BR	0		0.0	0.00	29.90	30.01	5.4	14	6.1	18	11	14	14	09	
10	95	74	85	4	72	75	0	20	RA BR	0		0.0	T	29.83	29.94	1.4	19	3.1	17	18	15	14	10	
11	94	72	83	2	71	75	0	18		0		0.0	0.00	29.82	29.93	3.3	16	4.3	20	13	16	12	11	
12	96*	73	85	4	72	75	0	20	RA	0		0.0	T	29.83	29.94	2.0	22	3.3	15	29	13	29	12	
13	94	75	85	4	72	75	0	20	TS RA	0		0.0	T	29.75	29.87	0.9	21	5.5	33	04	28	04	13	
14	91	72	82	1	71	74	0	17	TS TSRA RA BR	0		0.0	0.61	29.73	29.85	0.4	09	4.9	28	10	24	10	14	
15	92	72	82	1	72	74	0	17	TSRA RA BR	0		0.0	0.34	29.75	29.86	3.9	11	6.2	22	14	17	16	15	
16	87	73	80	-1	73	74	0	15	TS TSRA RA BR	0		0.0	0.29	29.83	29.93	5.6	10	6.8	24	14	21	14	16	
17	82	73	78*	-4	73	74	0	13	RA BR HZ	0		0.0	0.65	29.82	29.93	6.5	11	7.3	37	14	32	14	17	
18	94	75	85	3	74	77	0	20	MIFG	0		0.0	0.00	29.78	29.88	8.4	17	8.6	22	19	17	17	18	
19	94	78	86*	4	76	79	0	21		0		0.0	0.00	29.88	29.98	8.2	17	8.9	23	17	17	17	19	
20	89	77	83	1	74	77	0	18	TS TSRA RA	0		0.0	0.05	29.96	30.06	5.4	15	6.4	23	11	18	11	20	
21	89	76	83	1	74	76	0	18	TS TSRA RA	0		0.0	0.06	29.95	30.06	3.4	11	5.1	23	19	17	13	21	
22	87	75	81	-1	73	75	0	16	TS TSRA RA BR	0		0.0	0.25	29.88	30.01	2.8	11	4.7	15	21	12	22	22	
23	88	72	80	-2	72	74	0	15	TSRA RA BR	0		0.0	0.18	29.83	29.94	1.0	15	3.6	25	22	18	17	23	
24	90	73	82	0	70	73	0	17	RA	0		0.0	0.02	29.84	29.95	6.3	12	8.1	26	14	18	13	24	
25	87	74	81	-1	72	74	0	16	TS TSRA RA BR	0		0.0	0.06	29.93	30.03	7.4	13	8.1	33	14	30	14	25	
26	91	75	83	1	75	78	0	18	TS TSRA RA BR	0		0.0	0.05	29.95	30.06	10.0	16	10.2	26	16	23	14	26	
27	92	78	85	2	73	76	0	20		0		0.0	0.00	29.91	30.02	10.6	16	10.7	29	14	24	14	27	
28	91	75	83	0	72	75	0	18	TS TSRA RA BR SQ	0		0.0	0.06	29.85	29.97	4.7	15	6.4	51*	10	40*	10	28	
29	92	73	83	0	73	76	0	18	RA	0		0.0	0.13	29.86	29.98	6.3	14	6.8	23	16	20	15	29	
30	90	75	83	0	73	76	0	18	TS TSRA RA	0		0.0	0.24	29.86	29.98	3.3	18	4.1	22	21	17	22	30	

90.9			74.0			82.5			☼	72.2	75.0	0.0	17.7	< MONTHLY AVERAGES TOTALS >				0.0	3.07	29.82	29.94	4.5	15	6.6	< MONTHLY AVERAGES					
0.2			2.2			1.2				-----DEPARTURE FROM NORMAL -----										-2.28		SUNSHINE, CLOUD, & VISIBILITY TABLES ON PAGE 3								
DEGREE DAYS												GREATEST 24-HR PRECIPITATION : 0.75 DATE : 16-17				SEA LEVEL PRESSURE				DATE TIME										
MONTHLY						SEASON TO DATE						GREATEST 24-HR SNOWFALL : 0.0 DATE :				MAXIMUM : 30.12 26 1158														
TOTAL DEPARTURE						TOTAL DEPARTURE						GREATEST SNOW DEPTH : 0 DATE :				MINIMUM : 29.73 07 0304														
HEATING :		0		0		1341		-184		NUMBER OF -> DAYS WITH				MAXIMUM TEMP >= 90 : 21		MINIMUM TEMP <= 32 : 0		PRECIPITATION >= 0.01 INCH : 16												
COOLING :		530		45		1151		92		MAXIMUM TEMP <= 32 : 0		MINIMUM TEMP <= 0 : 0		PRECIPITATION >= 0.10 INCH : 8																
										THUNDERSTORMS : 13		HEAVY FOG : 0		SNOWFALL >= 1.0 INCH : 0																

**JUNE 2007
HOUSTON, TX**

HOURLY PRECIPITATION

(WATER EQUIVALENT IN INCHES)

HOUSTON, TX (KIAH)
JUNE 2007

WBAN # 12960

Date	FOR HOUR (LST) ENDING AT												Date	FOR HOUR (LST) ENDING AT												Date	Sum of Hourly Data	2400 LST Water Equiv.	
	1	2	3	4	5	6	7	8	9	10	11	12		13	14	15	16	17	18	19	20	21	22	23	24				
01													01												01	0.00	0.00		
02													02												02	T	T		
03													03												03	0.02	0.02		
04	0.06	T											04											T	0.02	0.06			
05													05												05	0.00	0.00		
06													06												06	0.00	0.00		
07													07												07	0.00	0.00		
08				T		T							08												08	T	T		
09													09												09	0.00	0.00		
10													10												10	T	T		
11													11												11	0.00	0.00		
12													12				T								12	T	T		
13													13												13	T	T		
14											0.30		14	0.13	0.01	T								T	0.02	0.07	0.02	0.02	0.04
15	T												15		0.12	0.19	0.03								15	0.34	0.34		
16													16	0.16	0.03		0.03	0.06	0.01						16	0.29	0.29		
17													17	0.14	0.03	0.03	T								17	0.65	0.65		
18													18												18	0.00	0.00		
19													19												19	0.00	0.00		
20		0.01	T	0.02	T	T	0.01	0.01					20												20	0.05	0.05		
21													21	0.02	0.02	0.01									21	0.06	0.06		
22								0.01	T				22												22	0.25	0.25		
23		T											23	T	T	T	0.10	0.08						T	0.23	0.02	T		
24			T	0.01	0.01								24												T		T		
25				T	0.01						0.05	T	25	T												25	0.06	0.06	
26												0.01	26	0.03	T		0.01								26	0.05	0.05		
27													27												27	0.00	0.00		
28													28	0.05	T	0.01									28	0.06	0.06		
29					0.01	0.02					0.02	T	29											0.01	0.01	0.04	0.02	0.13	0.13
30	0.01	0.01			0.03	0.01						0.12	30	T										0.01	0.02	0.02	0.01	0.24	0.24

* Indicates sum of Hourly and Daily disagree.

MAXIMUM SHORT DURATION PRECIPITATION (See Note)

Time Period (Minutes)	5	10	15	20	30	45	60	80	100	120	150	180
Precipitation (Inches)	0.26	0.35	0.36	0.36	0.36	0.36	0.39	0.44	0.44	0.44	0.44	0.44
Ending Date	17	17	17	17	17	17	14	17	17	17	17	17
Ending Time (Hr/Min)	0938	0943	0944	0944	0944	0944	1237	0944	0944	0944	0944	0944

Note : The hourly and daily precipitation totals are printed in the last 2 columns and hi-lighted in red when they disagree. NWS does not edit ASOS hourly values but may edit daily and monthly totals. Hourly, daily, and monthly totals are printed as reported by the ASOS site.

Date and time are not entered for TRACE amounts.

REFERENCE NOTES & SUPPLEMENTAL SUMMARIES

* = Extreme for the month (last occurrence if more than one).

T = Trace precipitation amount.

+ = also occurs on earlier date.

FG+ = Heavy fog, visibility .25 miles or less.

BLANK entries denote missing or unreported data.

Resultant wind is the vector sum of the wind speeds and directions divided by the number of observations.

Wind direction is recorded in tens of degrees (2 digits) clockwise from true north. '00' = calm, 'VR' = variable.

Precipitation is for the 24-hour period ending at the time indicated in the column heading.

Water Equivalent of snow on the ground is reported only when the depth is 2 or more inches.

NORMALS ARE FOR THE YEARS 1971-2000

WEATHER NOTATIONS

QUALIFIER	WEATHER PHENOMENA		
DESCRIPTOR	PRECIPITATION	OBSCURATION	OTHER
BC Patches	DZ Drizzle	BR Mist	DS Duststorm
BL Blowing	GR Hail	DU Widespread Dust	FC Funnel Cloud
DR Low Drifting	GS Small Hail and/or Snow Pellets	FG Fog	+FC Tornado Waterspout
FZ Freezing	IC Ice Crystals	FU Smoke	PO Well-Developed Dust/Sand Whirls
MI Shallow	PL Ice Pellets	HZ Haze	
PR Partial	RA Rain	PY Spray	SQ Squalls
SH Shower(s)	SG Snow Grains	SA Sand	SS Sandstorm
TS Thunderstorm	SN Snow	VA Volcanic Ash	GL Glaze
VC In the Vicinity	UP Unkown Precipitation		

Intensity (as indicated on pages 4 to 6):
'+' = Heavy '' = Moderate '-' = Light

HOUSTON, TX JUNE 2007

Ceilometer (30-second) data are used to derive cloudiness at or below 12,000 feet. This cloudiness is the mean cloud cover detected during sunrise to sunset (SR-SS), or midnight to midnight (MN-MN).

Satellite data are used to derive cloudiness above 12,000 feet. Effective Cloud Amount is based on the cloud cover and the transparency of the clouds within the satellite field of view (approx. 31x31 miles).

Sky Condition is based on the sum (not to exceed 8) of the sunrise to sunset cloud cover below and above 12,000 feet. Both ceilometer and satellite data must be present to compute Sky Condition. Clear = 0-2 oktas, Partly Cloudy = 3-6 oktas, Cloudy = 7-8 oktas.

A Heating (Cooling) Degree Day is the difference between the average daily temperature and 65 degrees F. The HDD season begins July 1, the CDD season begins January 1.

Dew Point is the temperature to which the air must be cooled to achieve 100% relative humidity. Wet Bulb is the temperature the air would have if cooled to saturation at constant pressure by evaporation of water into it.

Snow Depth, Snowfall, and Sunshine data may come from nearby sites that the National Weather Service deems Climatologically representative of this site.

ADDITIONAL NOTES:

Date	SUNSHINE		CLOUDINESS (OKTAS)				VISIBILITY (MILES)		RESERVED
	TOTAL MINUTES	PERCENT POSSIBLE	SR-SS		MN-MN		MINIMUM	MAXIMUM	
			Sky Cover	Satellite	Sky Cover	Satellite			
01							6.00	10.00	
02							4.00	10.00	
03							7.00	10.00	
04							10.00	10.00	
05							9.00	10.00	
06							10.00	10.00	
07							8.00	10.00	
08							8.00	10.00	
09							5.00	10.00	
10							3.00	10.00	
11							9.00	10.00	
12							9.00	10.00	
13							10.00	10.00	
14							0.75	10.00	
15							3.00	10.00	
16							4.00	10.00	
17							2.00	10.00	
18							7.00	10.00	
19							8.00	10.00	
20							7.00	10.00	
21							8.00	10.00	
22							5.00	10.00	
23							4.00	10.00	
24							6.00	10.00	
25							8.00	10.00	
26							6.00	10.00	
27							7.00	10.00	
28							7.00	10.00	
29							9.00	10.00	
30							5.00	10.00	
MONTHLY AVGS							6.49	10.00	
SUNSHINE (Minutes)									
Total : 0					Possible : 25261				
Percent Possible : 0									
NUMBER OF DAYS WITH : SKY CONDITION									
Clear		Partly CLDY		Cloudy		Missing			
MINIMUM VISIBILITY (MILES)									
<= .25		<= 3.0				>= 7.0			
0		4				17			

OBSERVATIONS AT 3-HOURLY INTERVALS

HOUSTON, TX
JUNE 2007

KIAH

WBAN # 12960

HOUR (LST)	SKY COVER	CEILING 100's of FT.	SATELLITE		WEATHER	TEMPERATURE °F			WIND		PRESSURE (INCHES, HG)		HOUR (LST)	SKY COVER	CEILING 100's of FT.	SATELLITE		WEATHER	TEMPERATURE °F			WIND		PRESSURE (INCHES, HG)						
			Observation Time (LST)	Eff Cld Amt Oktas		VISIBILITY (MILES)	DRY BULB	DEW POINT	WET BULB	RELATIVE HUMIDITY (PCT)	SPEED (MPH)	DIRECTION Tens of Deg				STATION	SEA LEVEL		Observation Time (LST)	Eff Cld Amt Oktas	VISIBILITY (MILES)	DRY BULB	DEW POINT	WET BULB	RELATIVE HUMIDITY (PCT)	SPEED (MPH)	DIRECTION Tens of Deg	STATION	SEA LEVEL	
																														Observation Time (LST)
SUNRISE: 0521 JUN 01						SUNSET: 1917						SUNRISE: 0520 JUN 07						SUNSET: 1920												
03	BKN	250			8.00	BR	73	70	71	90	3	18	29.80	29.91	03	BKN	250			10.00			79	73	75	82	13	17	29.63	29.73
06	BKN	250			6.00		71	69	70	93	5	11	29.80	29.91	06	BKN	250			10.00			81	74	76	79	15	17	29.66	29.76
09	BKN	250			10.00		81	70	74	69	9	13	29.83	29.94	09	BKN	250			10.00			86	74	78	68	17	19	29.69	29.79
12	BKN	037			10.00		86	67	73	53	10	12	29.80	29.91	12	BKN	250			10.00			90	74	79	59	18	16	29.68	29.79
15	BKN	250			10.00		87	68	74	53	11	12	29.75	29.86	15	BKN	250			10.00			92	73	78	54	14	17	29.66	29.76
18	SCT	250			10.00		83	65	71	55	14	14	29.72	29.83	18	SCT	250			10.00			88	74	78	63	14	15	29.67	29.77
21	SCT	250			8.00		76	69	71	79	7	15	29.74	29.85	21	BKN	250			10.00			84	75	78	74	13	16	29.72	29.82
24	BKN	250			8.00		73	70	71	90	5	13	29.77	29.88	24	BKN	250			10.00			83	75	77	77	8	16	29.75	29.86
SUNRISE: 0521 JUN 02						SUNSET: 1918						SUNRISE: 0520 JUN 08						SUNSET: 1921												
03	BKN	250			7.00	BR	72	69	70	90	3	33	29.76	29.87	03	OVC	050			10.00			83	75	77	77	7	18	29.79	29.90
06	BKN	250			4.00		72	69	70	90	5	03	29.76	29.87	06	SCT	250			9.00			81	75	77	82	5	17	29.83	29.93
09	BKN	250			7.00		80	71	74	74	0	00	29.80	29.91	09	BKN	250			10.00			87	75	78	68	11	15	29.86	29.96
12	BKN	046			10.00		87	68	74	53	0	00	29.77	29.88	12	BKN	039			10.00			90	76	80	64	10	16	29.88	29.99
15	BKN	055			9.00		86	69	74	57	3	16	29.73	29.84	15	BKN	060			10.00			91	76	80	62	15	13	29.86	29.97
18	BKN	250			10.00		81	71	74	72	8	17	29.71	29.82	18	SCT	050			8.00			86	77	80	75	11	11	29.85	29.96
21	SCT	250			10.00		77	70	72	79	5	17	29.75	29.85	21	SCT	250			8.00			82	77	78	85	7	15	29.87	29.98
24	BKN	250			10.00		77	72	74	85	6	19	29.76	29.86	24	SCT	250			8.00			80	76	77	88	5	19	29.91	30.01
SUNRISE: 0521 JUN 03						SUNSET: 1918						SUNRISE: 0520 JUN 09						SUNSET: 1921												
03	SCT	250			10.00		75	71	72	87	0	00	29.73	29.83	03	SCT	020			7.00			80	76	77	88	3	14	29.91	30.01
06	FEW	040			9.00		75	72	73	90	5	23	29.75	29.85	06	SCT	250			5.00	BR		78	76	77	94	0	00	29.93	30.03
09	SCT	250			10.00		82	71	74	69	8	26	29.77	29.88	09	SCT	250			9.00			84	74	77	72	5	13	29.97	30.08
12	BKN	032			10.00		88	71	76	57	9	28	29.76	29.86	12	OVC	250			9.00			90	71	77	54	10	10	29.96	30.06
15	BKN	250			10.00		91	70	76	50	9	22	29.70	29.80	15	BKN	250			9.00			92	72	78	52	11	11	29.89	30.00
18	SCT	250			10.00		89	67	74	48	6	24	29.65	29.76	18	SCT	250			10.00			89	73	78	59	13	12	29.85	29.95
21	BKN	250			10.00		81	74	76	79	3	36	29.72	29.82	21	FEW	250			10.00			83	73	76	72	5	17	29.88	29.99
24	OVC	120			7.00	-TSRA	77	72	74	85	6	VR	29.79	29.90	24	FEW	250			9.00			79	74	76	85	5	17	29.89	30.00
SUNRISE: 0520 JUN 04						SUNSET: 1919						SUNRISE: 0520 JUN 10						SUNSET: 1922												
03	OVC	250			10.00		73	71	72	93	0	00	29.70	29.80	03	SCT	250			9.00			77	73	74	88	5	23	29.83	29.93
06	BKN	250			10.00		74	70	71	87	5	33	29.70	29.80	06	BKN	250			3.00	BR		75	73	74	94	0	00	29.86	29.96
09	SCT	250			10.00		84	68	73	59	0	00	29.77	29.88	09	SCT	021			9.00			83	72	75	70	6	25	29.89	30.00
12	BKN	250			10.00		88	61	71	40	7	27	29.76	29.86	12	SCT	039			10.00			90	70	76	52	0	00	29.87	29.98
15	SCT	250			10.00		91	66	74	44	10	24	29.68	29.78	15	SCT	250			10.00			93	67	75	43	9	15	29.81	29.92
18	BKN	250			10.00		85	66	72	53	0	00	29.65	29.76	18	BKN	250			10.00			88	71	76	57	9	17	29.77	29.88
21	SCT	250			10.00		78	68	71	71	5	05	29.75	29.85	21	SCT	250			10.00			80	74	76	82	5	05	29.81	29.91
24	SCT	250			10.00		72	69	70	90	0	00	29.76	29.87	24	SCT	250			10.00			75	71	72	87	0	00	29.83	29.93
SUNRISE: 0520 JUN 05						SUNSET: 1919						SUNRISE: 0520 JUN 11						SUNSET: 1922												
03	FEW	250			9.00		71	68	69	90	0	00	29.76	29.86	03	SCT	250			10.00			75	71	72	87	0	00	29.81	29.91
06	FEW	250			10.00		71	69	70	93	0	00	29.77	29.88	06	FEW	250			10.00			74	71	72	90	0	00	29.84	29.94
09	BKN	250			10.00		84	68	73	59	3	23	29.79	29.90	09	BKN	250			10.00			85	71	75	63	0	00	29.86	29.96
12	OVC	250			10.00		87	63	71	45	7	17	29.79	29.90	12	BKN	250			10.00			89	70	76	54	0	00	29.84	29.95
15	OVC	250			10.00		87	67	74	52	6	17	29.76	29.87	15	SCT	250			10.00			92	68	75	45	5	VR	29.80	29.90
18	OVC	250			10.00		85	66	72	53	6	17	29.71	29.82	18	SCT	250			10.00			89	72	77	57	14	15	29.77	29.88
21	BKN	250			10.00		78	68	71	71	5	17	29.74	29.84	21	FEW	250			10.00			83	71	75	67	5	18	29.82	29.93
24	BKN	250			10.00		73	69	70	87	0	00	29.75	29.85	24	FEW	250			10.00			80	72	75	77	5	19	29.83	29.93
SUNRISE: 0520 JUN 06						SUNSET: 1920						SUNRISE: 0520 JUN 12						SUNSET: 1922												
03	SCT	250			10.00		72	68	69	87	3	20	29.75	29.85	03	SCT	250			10.00			75	71	72	87	0	00	29.84	29.94
06	FEW	250			10.00		70	67	68	90	0	00	29.77	29.87	06	SCT	250			9.00			74	71	72	90	0	00	29.88	29.98
09	SCT	250			10.00		82	69	73	65	13	16	29.78	29.88	09	BKN	250			10.00			86	73	77	65	5	24	29.89	29.99
12	BKN	250			10.00		88	66	73	48	10	15	29.74	29.85	12	BKN	250			10.00			90	70	76	52	5	VR	29.87	29.97
15	BKN	250			10.00		89	68	75	50	13	17	29.68	29.78	15	BKN	250			10.00			94	69	77	44	5	16	29.81	29.91
18	SCT	250			10.00		88	70	76	55	11	16	29.64	29.75	18	BKN	250			10.00			85	72	76	65	9	28	29.78	29.89
21	SCT	250			10.00		80	71	74	74	13	15	29.65	29.76	21	BKN	250			10.00			80	74	76	82	3	23	29.81	29.92
24	SCT	020			10.00		79	72	74	79	13	15	29.65	29.75	24	BKN	250			10.00			81	73	75	77	5	23	29.80	29.91

OBSERVATIONS AT 3-HOURLY INTERVALS

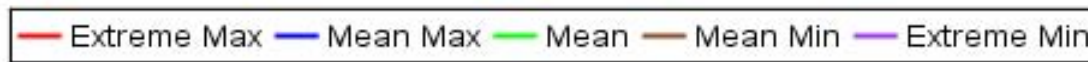
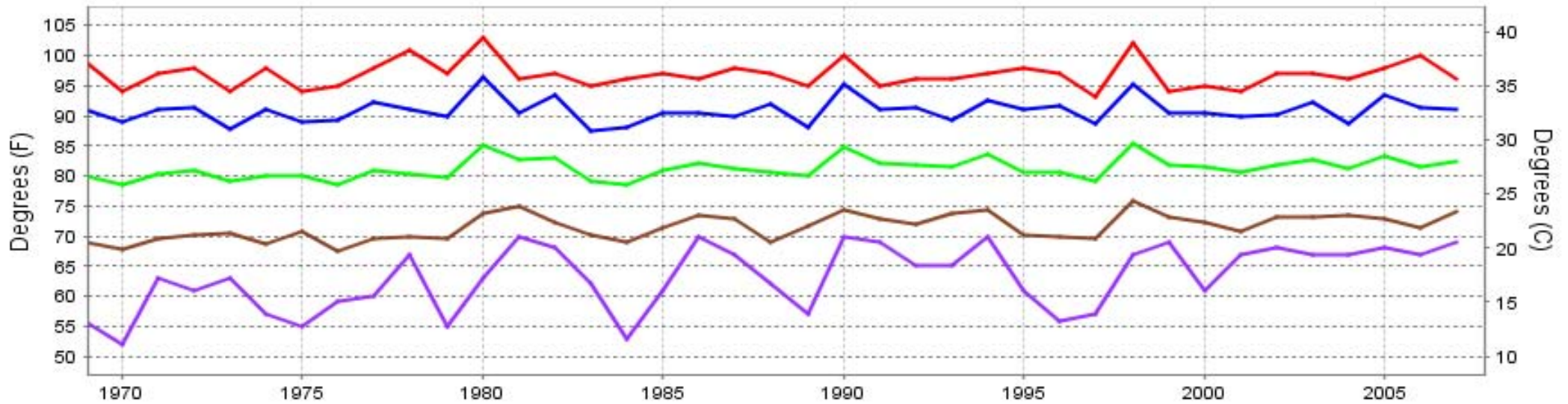
HOUSTON, TX
JUNE 2007

KIAH

WBAN # 12960

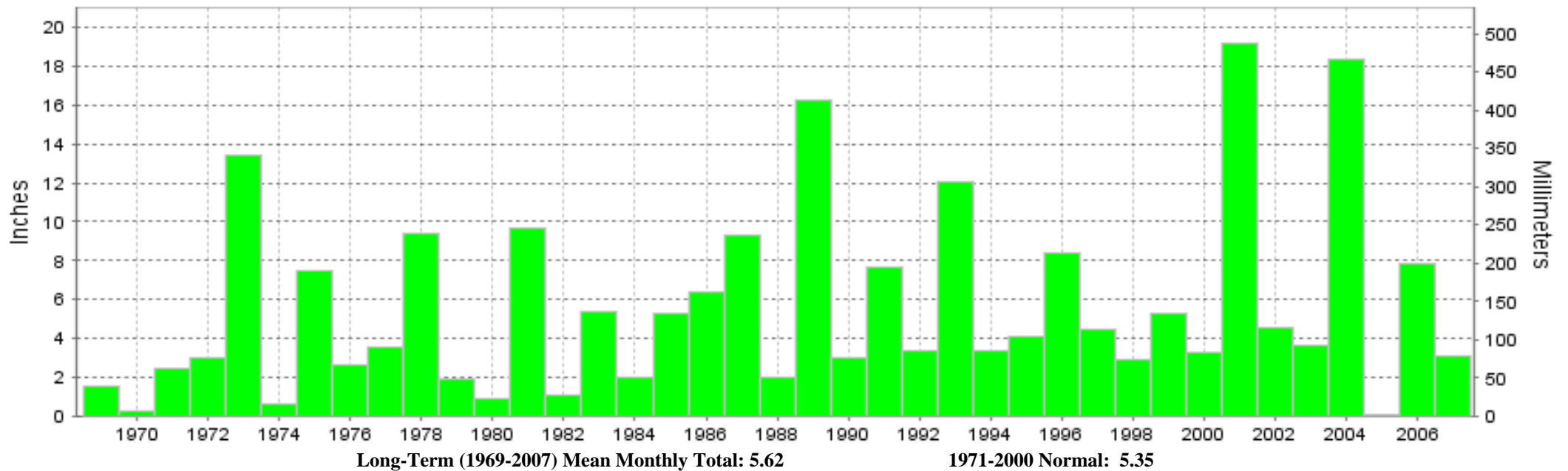
HOUR (LST)	SKY COVER	CEILING 100's of FT.	SATELLITE		WEATHER	TEMPERATURE °F			WIND SPEED (MPH) DIRECTION Tens of Deg	PRESSURE (INCHES, HG)		HOUR (LST)	SKY COVER	CEILING 100's of FT.	SATELLITE		WEATHER	TEMPERATURE °F			WIND SPEED (MPH) DIRECTION Tens of Deg	PRESSURE (INCHES, HG)							
			Observation Time (LST)	Eff Cld Amt Oktas		VISIBILITY (MILES)	DRY BULB	DEW POINT		WET BULB	RELATIVE HUMIDITY (PCT)				STATION	SEA LEVEL		Observation Time (LST)	Eff Cld Amt Oktas	VISIBILITY (MILES)		DRY BULB	DEW POINT	WET BULB	RELATIVE HUMIDITY (PCT)	STATION	SEA LEVEL		
																												WEATHER	WEATHER
SUNRISE: 0520						JUN 13						SUNSET: 1923																	
03	SCT	250				79	72	74	79	6	25	29.80	29.90	03	SCT	250				81	76	77	85	5	17	29.82	29.93		
06	SCT	250				78	73	75	85	5	30	29.80	29.91	06	BKN	250				81	78	79	91	5	18	29.85	29.96		
09	BKN	250				85	73	77	67	6	27	29.80	29.90	09	BKN	130				88	77	80	70	11	18	29.90	30.00		
12	BKN	250				91	70	76	50	5	VR	29.77	29.88	12	BKN	250				92	75	80	58	9	19	29.90	30.01		
15	BKN	250				89	72	77	57	10	16	29.71	29.81	15	BKN	250				93	76	81	58	10	17	29.87	29.97		
18	BKN	085			TS	79	73	75	82	15	04	29.73	29.84	18	BKN	130				89	76	80	66	11	16	29.85	29.96		
21	BKN	250				76	71	73	85	3	32	29.76	29.86	21	BKN	250				85	77	79	77	6	17	29.94	30.05		
24	BKN	250				75	72	73	90	5	11	29.74	29.84	24	OVC	250				83	77	79	82	7	15	29.94	30.04		
SUNRISE: 0520						JUN 14						SUNRISE: 0521						JUN 19						SUNSET: 1925					
03	SCT	250				74	71	72	90	0	00	29.73	29.83	03	BKN	044				77	71	73	82	11	16	29.96	30.06		
06	SCT	250			BR	73	71	72	93	6	01	29.76	29.87	06	BKN	250				77	74	75	91	6	04	29.98	30.10		
09	SCT	250				85	74	77	70	0	00	29.76	29.87	09	OVC	250				82	73	76	74	0	00	29.96	30.07		
12	BKN	250			TSRA	83	74	77	74	5	VR	29.76	29.87	12	OVC	250				87	73	77	63	5	14	29.98	30.08		
15	BKN	120				85	71	75	63	5	VR	29.70	29.81	15	OVC	250				89	74	78	61	9	14	29.94	30.04		
18	BKN	250			TS	80	67	71	65	14	17	29.69	29.80	18	BKN	250				87	72	77	61	9	17	29.94	30.04		
21	BKN	050			TSRA BR	75	72	73	90	5	28	29.76	29.86	21	BKN	250				81	75	77	82	6	16	29.97	30.07		
24	BKN	100			-RA	74	72	73	94	5	16	29.77	29.88	24	BKN	250				78	75	76	91	3	14	29.98	30.08		
SUNRISE: 0520						JUN 15						SUNRISE: 0521						JUN 20						SUNSET: 1925					
03	SCT	120				73	71	72	93	6	11	29.73	29.84	03	OVC	250				77	75	76	94	7	10	29.93	30.04		
06	SCT	250				73	71	72	93	0	00	29.76	29.87	06	BKN	250				77	74	75	91	0	00	29.95	30.06		
09	SCT	130				83	74	77	74	7	17	29.77	29.88	09	SCT	035				84	74	77	72	5	08	29.98	30.08		
12	BKN	250				88	70	76	55	5	22	29.76	29.87	12	BKN	100				79	70	73	74	6	21	29.98	30.08		
15	BKN	250			TS+RA BR	74	70	71	87	6	15	29.74	29.85	15	BKN	130				85	74	77	70	6	06	29.94	30.05		
18	SCT	250				82	72	75	72	9	10	29.73	29.83	18	OVC	250				83	73	76	72	8	07	29.93	30.04		
21	SCT	250				76	72	73	87	10	08	29.76	29.87	21	OVC	250				78	74	75	88	3	12	29.95	30.05		
24	SCT	250				76	73	74	90	6	11	29.77	29.88	24	OVC	250				78	73	75	85	0	00	29.95	30.06		
SUNRISE: 0520						JUN 16						SUNRISE: 0521						JUN 21						SUNSET: 1925					
03	SCT	250				74	72	73	94	0	00	29.77	29.88	03	OVC	250				77	75	76	94	7	10	29.93	30.04		
06	BKN	250			BR	75	73	74	94	0	00	29.79	29.90	06	OVC	250				76	73	74	90	6	04	29.94	30.05		
09	BKN	250				85	75	78	72	7	11	29.82	29.92	09	OVC	250				81	74	76	79	3	VR	29.95	30.06		
12	BKN	250				85	73	77	67	18	13	29.84	29.95	12	BKN	130				85	73	77	67	6	08	29.94	30.04		
15	BKN	250				79	73	75	82	9	11	29.85	29.96	15	OVC	250				86	71	76	61	8	11	29.87	29.98		
18	OVC	250			-RA	76	72	73	87	10	07	29.84	29.95	18	OVC	250				83	74	77	74	9	11	29.83	29.94		
21	BKN	250				75	73	74	94	8	10	29.84	29.95	21	BKN	060				76	72	73	87	6	24	29.86	29.96		
24	BKN	250				75	72	73	90	6	09	29.87	29.98	24	OVC	250				77	75	76	94	0	00	29.86	29.96		
SUNRISE: 0520						JUN 17						SUNRISE: 0521						JUN 22						SUNSET: 1926					
03	BKN	250				74	72	73	94	3	07	29.84	29.95	03	BKN	250				77	74	75	91	0	00	29.82	29.93		
06	BKN	250				75	72	73	90	6	04	29.85	29.95	06	BKN	250				77	74	75	91	0	00	29.86	29.97		
09	OVC	055				78	74	75	88	10	10	29.86	29.97	09	OVC	250				80	76	77	88	0	00	29.87	29.98		
12	BKN	020				77	74	75	91	10	11	29.88	29.99	12	OVC	250				84	75	78	74	8	16	29.84	29.95		
15	BKN	080			-RA	76	73	74	90	8	13	29.84	29.94	15	BKN	100				82	72	75	72	9	17	29.83	29.94		
18	BKN	250				79	74	76	85	9	13	29.77	29.88	18	OVC	250				74	66	69	76	0	00	29.81	29.92		
21	FEW	250				76	73	74	90	8	11	29.79	29.90	21	OVC	250				73	69	70	87	5	27	29.80	29.91		
24	SCT	250				77	74	75	91	0	00	29.80	29.91	24	OVC	100				73	69	70	87	3	04	29.81	29.91		
SUNRISE: 0520						JUN 18						SUNRISE: 0522						JUN 23						SUNSET: 1926					
03	SCT	250				78	74	75	88	6	16	29.78	29.89	03	OVC	090				73	68	70	84	5	36	29.81	29.92		
06	SCT	250			MIFG	75	73	74	94	0	00	29.80	29.91	06	BKN	250				73	69	70	87	5	07	29.83	29.94		
09	BKN	250				85	74	77	70	10	17	29.80	29.91	09	SCT	120				81	71	74	72	8	09	29.87	29.97		
12	BKN	250				91	72	78	54	10	18	29.78	29.89	12	BKN	250				87	72	77	61	14	13	29.85	29.96		
15	SCT	250				92	72	78	52	14	17	29.73	29.84	15	SCT	250				90	68	75	48	18	13	29.82	29.92		
18	SCT	040				90	73	78	57	8	18	29.72	29.83	18	BKN	250				85	71	75	63	13	13	29.82	29.93		
21	SCT	130				84	76	78	77	10	16	29.76	29.87	21	BKN	250				81	72	75	74	6	15	29.86	29.96		
24	SCT	130				80	76	77	88	6	16	29.82	29.93	24	BKN	250				75	71	72	87	0	00	29.88	29.99		

HOUSTON, TX JUNE Temperatures



Long-Term (1969-2007) Mean: 81.2
 1971-2000 Normal: 81.3

HOUSTON, TX JUNE Precipitation



Long-Term (1969-2007) Mean Monthly Total: 5.62

1971-2000 Normal: 5.35



**JUNE 2007
HOUSTON, TX**

**LOCAL CLIMATOLOGICAL DATA
NOAA, National Climatic Data Center**

I certify that this is an official publication of the National Oceanic and Atmospheric Administration (NOAA). It is compiled using information from weather observing sites operated by NOAA-National Weather Service / Department Of Transportation-Federal Aviation Administration and received at the National Climatic Data Center (NCDC), Asheville, North Carolina 28801.

Thomas R. Karl
DIRECTOR

NCDC now offers an annual online subscription for the **Edited Local Climatological Data Publication**. When you purchase this subscription service, you will have **immediate online access** to all previous publications back to July 1996 and all publications thereafter until the expiration of the subscription. Your subscription is valid for one year after purchase. **The total cost for online delivery (including back issues) is significantly less than the cost for offline delivery.** To order this and other subscriptions online with your credit card, go to: **www.ncdc.noaa.gov** and choose subscriptions.

We welcome your questions or comments, please contact us at:

Toll Free Number (866) 742-3322 (voice)

Fax Number : (304) 726-4409

TDD : (828) 271-4010

or Email : ncdc.info@noaa.gov

Local Climatological Data is available at www.ncdc.noaa.gov

United States
Department of Commerce

National Oceanic and
Atmospheric Administration

National Environmental Satellite
Atmospheric Administration

For address correction, please return a photocopy of this page to Subscription Services indicating changes

NCDC Subscription Services Center
310 State Route 956 Building 300
Rocket Center, WV 26726

OFFICIAL BUSINESS, PENALTY FOR PRIVATE USE \$300

FIRST CLASS
POSTAGE AND FEES PAID
NOAA
PERMIT G-19