



JULY 2008

LOCAL CLIMATOLOGICAL DATA

NOAA, National Climatic Data Center

HOUSTON, TX
G BUSH INTERCONTINENTAL AP/HOUSTON AP (KIAH)
 Lat:29° 59'N Long: 95° 21'W Elev (Ground) 94 Feet
 Time Zone : CENTRAL WBAN: 12960 ISSN#: 0198-5094



Date	Temperature °F						Deg Days BASE 65°		WEATHER	SNOW/ICE ON GND(IN)		PRECIPITATION ON GND(IN)		PRESSURE (INCHES OF HG)		WIND SPEED = MPH DIR = TENS OF DEGREES								Date
	MAXIMUM	MINIMUM	AVERAGE	DEP FROM NORMAL	AVERAGE DEW PT	AVERAGE WET BULB	HEATING	COOLING		0600 LST	1200 LST	2400 LST	2400 LST	AVERAGE STATION	AVERAGE SEA LEVEL	RESULTANT SPEED	RES DIR	AVERAGE SPEED	MAXIMUM					
																			3-SEC		2-MIN			
1	2	3	4	5	6	7	8	9	10	11	12	13	14	15	16	17	18	19	20	21	22	23	24	
01	92	71	82	-1	65	71	0	17		0		0.0	0.00	29.91	30.02	3.2	10	5.8	21	13	16	10	01	
02	92	72	82	-1	69	73	0	17	TS TSRA RA BR	0		0.0	0.11	29.86	29.98	2.9	15	5.0	28	14	24	14	02	
03	94	69*	82	-1	68	73	0	17		0		0.0	0.00	29.90	30.00	4.4	15	5.5	25	13	18	15	03	
04	93	72	83	0	70	73	0	18	TS TSRA RA HZ	0		0.0	0.08	29.93	30.04	4.4	18	5.3	28	23	21	18	04	
05	91	71	81	-2	70	73	0	16	TS	0		0.0	0.00	29.90	30.02	2.6	16	4.8	31	13	28	13	05	
06	95	73	84	1	70	74	0	19		0		0.0	0.00	29.88	29.99	5.7	13	6.9	20	14	16	14	06	
07	95	73	84	1	70	75	0	19		0		0.0	0.00	29.88	30.00	7.9	13	8.5	30	12	21	11	07	
08	96	75	86	3	73	76	0	21	TS RA	0		0.0	T	29.88	29.99	3.3	12	5.7	26	14	21	14	08	
09	96	73	85	2	72	75	0	20	TS TSRA RA	0		0.0	T	29.91	30.02	2.4	18	3.4	22	14	18	16	09	
10	94	73	84	1	70	75	0	19	RA	0		0.0	T	29.95	30.06	5.1	17	5.8	23	17	16	18	10	
11	98	75	87	4	71	75	0	22		0		0.0	0.00	29.96	30.07	7.5	18	8.4	24	15	21	15	11	
12	98	76	87	4	71	75	0	22		0		0.0	0.00	29.93	30.05	7.0	18	7.4	21	14	16	16	12	
13	95	74	85	2	70	75	0	20		0		0.0	0.00	29.84	29.97	5.5	21	6.1	17	23	14	24	13	
14	100*	78	89	6	71	76	0	24	RA	0		0.0	T	29.83	29.93	0.7	21	7.7	20	02	16	02	14	
15	97	76	87	3	71	76	0	22		0		0.0	0.00	29.88	29.99	3.1	15	5.0	22	13	20	12	15	
16	99	75	87	3	70	75	0	22		0		0.0	0.00	29.92	30.02	4.0	15	5.8	21	16	16	16	16	
17	98	72	85	1	68	74	0	20		0		0.0	0.00	29.90	30.01	5.4	14	6.0	21	14	17	12	17	
18	95	71	83	-1	69	73	0	18	TS RA	0		0.0	T	29.86	29.97	4.2	14	5.2	30	16	25	16	18	
19	96	73	85	1	70	74	0	20		0		0.0	0.00	29.89	30.00	5.1	14	6.3	24	13	18	13	19	
20	98	74	86	2	69	75	0	21		0		0.0	0.00	29.93	30.04	2.8	18	4.7	20	18	17	16	20	
21	99	76	88	4	67	74	0	23		0		0.0	0.00	29.85	29.98	3.0	14	6.8	23	13	18	13	21	
22	97	75	86	2	71	75	0	21	RA	0		0.0	T	29.80	29.92	9.4	09	10.9	29	12	25	12	22	
23	91	75	83	-1	73	76	0	18	TS TSRA RA	0		0.0	0.18	29.80	29.91	10.1	09	11.6	36*	09	28*	09	23	
24	85	75	80*	-4	74	75	0	15	TS TSRA RA BR	0		0.0	0.72	29.88	29.98	6.1	09	7.2	21	11	15	06	24	
25	95	74	85	1	72	76	0	20	MIFG BR	0		0.0	0.00	29.97	30.07	5.8	17	6.0	17	17	13	16	25	
26	97	78	88	4	69	75	0	23		0		0.0	0.00	29.93	30.05	5.0	22	5.6	13	23	9	22	26	
27	98	74	86	2	67	73	0	21		0		0.0	0.00	29.82	29.95	5.0	22	6.6	15	15	12	18	27	
28	98	76	87	3	71	75	0	22		0		0.0	0.00	29.78	29.89	5.5	19	7.3	21	12	17	16	28	
29	97	74	86	2	70	75	0	21		0		0.0	0.00	29.77	29.88	6.9	18	7.6	22	16	18	16	29	
30	97	78	88	4	71	76	0	23		0		0.0	0.00	29.72	29.84	6.8	20	7.7	22	18	17	17	30	
31	99	78	89*	5	72	76	0	24		0		0.0	0.00	29.72	29.84	6.7	21	7.9	20	19	14	18	31	

95.6			74.2			84.9			☼	70.1			74.6			0.0		20.2		< MONTHLY AVERAGES TOTALS >				0.0		1.09		29.87		29.98		3.9		16		6.6		< MONTHLY AVERAGES			
2.0			0.7			1.3				<----- DEPARTURE FROM NORMAL ----->												-2.09		SUNSHINE, CLOUD, & VISIBILITY TABLES ON PAGE 3																	
DEGREE DAYS									GREATEST 24-HR PRECIPITATION : 0.83 DATE : 23-24									SEA LEVEL PRESSURE						DATE TIME																	
MONTHLY									SEASON TO DATE									GREATEST 24-HR SNOWFALL : 0.0 DATE :						MAXIMUM : 30.13 26 1017																	
TOTAL DEPARTURE									TOTAL DEPARTURE									GREATEST SNOW DEPTH : 0 DATE :						MINIMUM : 29.75 30 1826																	
HEATING :			0			0			0			0			NUMBER OF ->						MAXIMUM TEMP >= 90 : 30			MINIMUM TEMP <= 32 : 0			PRECIPITATION >= 0.01 INCH: 4														
COOLING :			625			52			1930			298			THUNDERSTORMS : 8						MAXIMUM TEMP <= 32 : 0			MINIMUM TEMP <= 0 : 0			PRECIPITATION >= 0.10 INCH: 3														
																								SNOWFALL >= 1.0 INCH : 0																	

JULY 2008
HOUSTON, TX

HOURLY PRECIPITATION

(WATER EQUIVALENT IN INCHES)

HOUSTON, TX (KIAH)
JULY 2008

WBAN # 12960

Date	FOR HOUR (LST) ENDING AT												Date	FOR HOUR (LST) ENDING AT												Date	Sum of Hourly Data	2400 LST Water Equiv.
	1	2	3	4	5	6	7	8	9	10	11	12		13	14	15	16	17	18	19	20	21	22	23	24			
01													01												01	0.00	0.00	
02													02	0.10	0.01										02	0.11	0.11	
03													03												03	0.00	0.00	
04													04	0.01	0.07										04	0.08	0.08	
05													05												05	0.00	0.00	
06													06												06	0.00	0.00	
07													07												07	0.00	0.00	
08													08												08	T	T	
09												T	09		T	T									09	T	T	
10												T	10												10	T	T	
11													11												11	0.00	0.00	
12													12												12	0.00	0.00	
13													13												13	0.00	0.00	
14													14						T	T	T				14	T	T	
15													15												15	0.00	0.00	
16													16												16	0.00	0.00	
17													17												17	0.00	0.00	
18													18		T										18	T	T	
19													19												19	0.00	0.00	
20													20												20	0.00	0.00	
21													21												21	0.00	0.00	
22													22				T								22	T	T	
23					0.01	0.03							23	0.05			0.01	0.02		T		0.05	0.01		23	0.18	0.18	
24		0.19	0.02	0.02	0.02	0.14	0.01	0.08	0.10	0.06	0.05		24		T	T	0.03		T					24	0.72	0.72		
25													25												25	0.00	0.00	
26													26												26	0.00	0.00	
27													27												27	0.00	0.00	
28													28												28	0.00	0.00	
29													29												29	0.00	0.00	
30													30												30	0.00	0.00	
31													31												31	0.00	0.00	

* Indicates sum of Hourly and Daily disagree.

MAXIMUM SHORT DURATION PRECIPITATION (See Note)

Time Period (Minutes)	5	10	15	20	30	45	60	80	100	120	150	180
Precipitation (Inches)	0.07	0.12	0.14	0.14	0.15	0.19	0.20	0.21	0.21	0.21	0.23	0.26
Ending Date	24	24	24	24	24	24	24	24	24	24	24	24
Ending Time (Hr/Min)	0503	0508	0512	0512	0146	0146	0201	0219	0219	0219	1007	1007

Note : The hourly and daily precipitation totals are printed in the last 2 columns and hi-lighted in red when they disagree. NWS does not edit ASOS hourly values but may edit daily and monthly totals. Hourly, daily, and monthly totals are printed as reported by the ASOS site.

Date and time are not entered for TRACE amounts.

OBSERVATIONS AT 3-HOURLY INTERVALS

HOUSTON, TX
JULY 2008

KIAH

WBAN # 12960

HOUR (LST)	SKY COVER	CEILING 100's of FT.	SATELLITE		WEATHER	TEMPERATURE °F			WIND SPEED (MPH) DIRECTION Tens of Deg	PRESSURE (INCHES, HG)		HOUR (LST)	SKY COVER	CEILING 100's of FT.	SATELLITE		WEATHER	TEMPERATURE °F			WIND SPEED (MPH) DIRECTION Tens of Deg	PRESSURE (INCHES, HG)					
			Observation Time (LST)	Eff Cld Amt Oktas		VISIBILITY (MILES)	DRY BULB	DEW POINT		WET BULB	RELATIVE HUMIDITY (PCT)				STATION	SEA LEVEL		Observation Time (LST)	Eff Cld Amt Oktas	VISIBILITY (MILES)		DRY BULB	DEW POINT	WET BULB	RELATIVE HUMIDITY (PCT)	STATION	SEA LEVEL
SUNRISE: 0524						JUL 01						SUNSET: 1927															
03	SCT	250			10.00	74	67	69	79	5	33	29.92	30.03	03	FEW	250			10.00	74	72	73	94	0	00	29.89	30.00
06	SCT	250			10.00	72	66	68	82	3	02	29.94	30.04	06	SCT	250			8.00	73	72	72	97	0	00	29.91	30.01
09	BKN	250			10.00	82	62	69	51	8	09	29.97	30.07	09	SCT	250			10.00	86	73	77	65	8	12	29.92	30.02
12	BKN	250			10.00	87	63	71	45	5	VR	29.95	30.05	12	SCT	250			10.00	92	65	74	41	17	11	29.91	30.02
15	BKN	250			10.00	91	59	70	34	10	09	29.88	29.99	15	SCT	250			10.00	93	69	76	46	17	14	29.88	29.99
18	BKN	250			9.00	87	67	74	52	9	12	29.87	29.98	18	SCT	250			10.00	88	70	76	55	13	14	29.87	29.98
21	BKN	250			10.00	79	68	72	69	5	17	29.90	30.00	21	SCT	250			10.00	78	71	73	79	6	15	29.86	29.97
24	BKN	250			10.00	76	70	72	82	0	00	29.89	30.00	24	SCT	250			10.00	78	73	75	85	6	12	29.88	29.99
SUNRISE: 0524						JUL 02						SUNSET: 1927															
03	BKN	250			7.00	73	70	71	90	0	00	29.88	29.99	03	SCT	250			10.00	76	74	75	94	0	00	29.87	29.97
06	BKN	250			6.00	73	71	72	93	5	VR	29.89	30.00	06	SCT	250			10.00	76	74	75	94	3	11	29.90	30.00
09	FEW	033			10.00	84	72	76	67	3	VR	29.91	30.02	09	SCT	250			10.00	88	74	78	63	9	11	29.92	30.02
12	SCT	049			10.00	91	69	76	49	5	VR	29.88	29.99	12	BKN	250			10.00	94	70	77	46	9	11	29.91	30.01
15	BKN	250			10.00	83	71	75	67	7	18	29.86	29.97	15	BKN	250			10.00	93	70	77	47	20	14	29.87	29.97
18	BKN	250			10.00	86	70	75	59	8	10	29.84	29.95	18	BKN	250			10.00	85	73	77	67	3	VR	29.85	29.96
21	FEW	250			10.00	82	68	73	63	7	18	29.86	29.96	21	BKN	250			10.00	80	74	76	82	5	06	29.88	29.99
24	FEW	250			10.00	76	68	71	76	5	17	29.86	29.96	24	SCT	250			10.00	77	73	74	88	0	00	29.91	30.02
SUNRISE: 0525						JUL 03						SUNSET: 1926															
03	SCT	250			10.00	72	68	69	87	0	00	29.87	29.98	03	SCT	250			10.00	74	72	73	94	0	00	29.91	30.01
06	SCT	250			10.00	71	69	70	93	5	35	29.92	30.03	06	SCT	250			9.00	75	73	74	94	0	00	29.92	30.03
09	SCT	250			10.00	85	69	74	59	0	00	29.94	30.04	09	SCT	250			10.00	86	73	77	65	0	00	29.95	30.06
12	BKN	250			10.00	90	67	74	47	10	11	29.91	30.02	12	SCT	250			10.00	93	71	78	49	7	VR	29.93	30.03
15	SCT	250			10.00	93	68	76	44	14	13	29.87	29.98	15	BKN	250			10.00	86	69	74	57	8	20	29.91	30.02
18	SCT	250			10.00	88	66	73	48	11	17	29.86	29.96	18	BKN	250			10.00	85	72	76	65	3	21	29.89	30.00
21	SCT	250			10.00	82	69	73	65	7	17	29.90	30.01	21	BKN	250			10.00	80	72	75	77	3	17	29.92	30.02
24	FEW	250			10.00	76	70	72	82	0	00	29.92	30.03	24	SCT	250			10.00	79	73	75	82	3	18	29.94	30.05
SUNRISE: 0525						JUL 04						SUNSET: 1926															
03	FEW	250			10.00	75	70	72	85	0	00	29.91	30.01	03	SCT	250			10.00	75	72	73	90	0	00	29.92	30.03
06	SCT	250			10.00	72	70	71	93	0	00	29.94	30.05	06	SCT	250			10.00	74	72	73	94	0	00	29.95	30.06
09	SCT	250			10.00	83	71	75	67	5	VR	29.98	30.09	09	BKN	250			10.00	84	72	76	67	7	VR	29.98	30.10
12	SCT	250			10.00	92	66	74	42	10	19	29.95	30.05	12	BKN	250			10.00	85	67	73	55	7	18	30.00	30.11
15	BKN	130			10.00	80	72	75	77	7	17	29.96	30.07	15	BKN	250			10.00	93	65	74	40	9	16	29.94	30.05
18	BKN	250			10.00	84	68	73	59	6	19	29.92	30.03	18	SCT	250			10.00	88	69	75	53	11	15	29.92	30.02
21	SCT	250			10.00	77	69	72	76	6	16	29.93	30.04	21	SCT	250			10.00	83	70	74	65	7	17	29.94	30.04
24	SCT	250			9.00	76	68	71	76	5	18	29.93	30.03	24	FEW	250			10.00	79	72	74	79	6	16	29.96	30.07
SUNRISE: 0526						JUL 05						SUNSET: 1926															
03	SCT	130			10.00	72	68	69	87	0	00	29.91	30.02	03	FEW	250			10.00	77	73	74	88	5	19	29.96	30.06
06	OVC	250			9.00	73	69	70	87	3	35	29.93	30.04	06	BKN	250			10.00	76	72	73	87	0	00	29.98	30.09
09	OVC	250			10.00	81	70	74	69	3	VR	29.96	30.06	09	BKN	250			10.00	85	71	75	63	11	20	30.01	30.11
12	OVC	250			9.00	86	73	77	65	3	VR	29.94	30.04	12	BKN	250			10.00	93	69	76	46	8	21	29.98	30.09
15	OVC	250			10.00	83	65	71	55	0	00	29.91	30.02	15	BKN	250			10.00	97	66	76	36	8	18	29.93	30.03
18	BKN	250			10.00	87	66	73	50	8	18	29.87	29.98	18	SCT	250			10.00	91	70	76	50	17	16	29.92	30.02
21	FEW	250			10.00	78	71	73	79	5	16	29.87	29.98	21	FEW	250			10.00	84	70	74	63	11	19	29.95	30.05
24	SCT	250			10.00	74	72	73	94	5	24	29.88	29.98	24	BKN	250			10.00	74	72	74	79	7	18	29.98	30.09
SUNRISE: 0526						JUL 06						SUNSET: 1926															
03	BKN	250			10.00	73	70	71	90	0	00	29.87	29.98	03	SCT	250			10.00	79	74	76	85	5	20	29.97	30.07
06	BKN	250			10.00	74	70	71	87	5	03	29.89	29.99	06	FEW	250			10.00	76	74	75	94	5	17	29.98	30.09
09	OVC	120			9.00	82	73	76	74	3	VR	29.93	30.03	09	SCT	250			10.00	87	71	76	59	8	17	30.00	30.10
12	SCT	140			10.00	91	69	76	49	6	10	29.92	30.02	12	SCT	250			10.00	93	68	76	44	8	16	29.96	30.07
15	SCT	250			10.00	94	70	77	46	13	13	29.86	29.97	15	SCT	250			10.00	96	67	76	39	9	17	29.91	30.02
18	SCT	250			10.00	89	68	75	50	15	13	29.84	29.94	18	SCT	250			10.00	92	68	76	45	13	17	29.89	29.99
21	SCT	250			10.00	82	72	75	72	10	15	29.88	29.99	21	FEW	250			10.00	84	69	74	61	7	17	29.88	29.99
24	FEW	250			10.00	80	73	75	79	3	14	29.89	29.99	24	SCT	250			10.00	79	72	74	79	6	19	29.93	30.03
SUNRISE: 0527						JUL 07						SUNSET: 1926															
03	FEW	250			10.00	74	72	73	94	0	00	29.89	30.00	03	FEW	250			10.00	74	72	73	94	0	00	29.89	30.00
06	SCT	250			8.00	73	72	72	97	0	00	29.91	30.01	06	SCT	250			8.00	73	72	72	97	0	00	29.91	30.01
09	SCT	250			10.00	86	73	77	65	8	12	29.92	30.02	09	SCT	250			10.00	86	73	77	65	8	12	29.92	30.02
12	SCT	250			10.00	92	65	74	41	17	11	29.91	30.02	12	SCT	250			10.00	92	65	74	41	17	11	29.91	30.02
15	SCT	250			10.00	93	69	76	46	17	14	29.88	29.99	15	SCT	250			10.00	93	69	76	46	17	14	29.88	29.99
18	SCT	250		</																							

OBSERVATIONS AT 3-HOURLY INTERVALS

HOUSTON, TX
JULY 2008

KIAH

WBAN # 12960

HOUR (LST)	SKY COVER	CEILING 100's of FT.	SATELLITE		VISIBILITY (MILES)	WEATHER	TEMPERATURE °F			WIND SPEED (MPH) DIRECTION Tens of Deg	PRESSURE (INCHES, HG)		HOUR (LST)	SKY COVER	CEILING 100's of FT.	SATELLITE		VISIBILITY (MILES)	WEATHER	TEMPERATURE °F			WIND SPEED (MPH) DIRECTION Tens of Deg	PRESSURE (INCHES, HG)					
			Observation Time (LST)	Eff Cld Amt Oktas			DRY BULB	DEW POINT	WET BULB		RELATIVE HUMIDITY (PCT)	STATION				SEA LEVEL	Observation Time (LST)			Eff Cld Amt Oktas	DRY BULB	DEW POINT		WET BULB	RELATIVE HUMIDITY (PCT)	STATION	SEA LEVEL		
SUNRISE: 0529 JUL 13							SUNSET: 1925						SUNRISE: 0533 JUL 19							SUNSET: 1923									
03	CLR	NC			10.00	JUL 13	77	72	74	85	6	21	29.89	30.00	03	FEW	025			10.00	JUL 19	75	71	72	87	0	00	29.87	29.98
06	SCT	250			10.00		74	71	72	90	0	00	29.90	30.00	06	SCT	130			7.00		74	71	72	90	5	01	29.90	30.00
09	SCT	250			10.00		86	71	76	61	7	24	29.92	30.03	09	SCT	250			10.00		86	72	76	63	5	VR	29.92	30.02
12	BKN	250			10.00		93	69	76	46	9	25	29.89	30.00	12	SCT	250			10.00		93	69	76	46	10	15	29.91	30.02
15	BKN	250			10.00		94	68	76	43	6	25	29.82	29.93	15	BKN	250			10.00		92	69	76	47	15	12	29.87	29.98
18	BKN	250			10.00		93	65	74	40	8	16	29.78	29.88	18	SCT	250			10.00		89	70	76	54	11	12	29.85	29.96
21	SCT	250			10.00		85	72	76	65	9	18	29.81	29.91	21	FEW	250			10.00		84	67	73	57	8	16	29.90	30.00
24	FEW	250			10.00		81	73	75	77	6	22	29.82	29.92	24	FEW	250			10.00		81	71	74	72	5	21	29.93	30.03
SUNRISE: 0530 JUL 14							SUNSET: 1925						SUNRISE: 0533 JUL 20							SUNSET: 1922									
03	SCT	250			10.00	JUL 14	79	73	75	82	5	24	29.81	29.91	03	FEW	250			10.00	JUL 20	77	71	73	82	3	19	29.92	30.02
06	BKN	250			10.00		78	73	75	85	5	25	29.85	29.95	06	SCT	250			8.00		74	72	73	94	0	00	29.96	30.06
09	SCT	250			10.00		85	71	75	63	6	26	29.86	29.97	09	SCT	250			10.00		86	72	76	63	7	25	30.02	
12	SCT	250			10.00		93	66	75	41	9	30	29.85	29.95	12	SCT	250			10.00		93	66	75	41	5	VR	30.00	30.10
15	BKN	250			10.00		98	64	75	33	10	13	29.77	29.88	15	SCT	250			10.00		97	65	75	35	7	VR	29.92	30.03
18	BKN	250			10.00		86	73	77	65	11	04	29.80	29.90	18	SCT	250			10.00		93	70	77	47	11	14	29.89	29.99
21	BKN	250			10.00		80	75	77	85	6	12	29.83	29.93	21	FEW	250			10.00		86	70	75	59	7	18	29.92	30.02
24	SCT	250			10.00		81	71	74	72	5	19	29.85	29.95	24	FEW	250			10.00		83	70	74	65	5	22	29.93	30.04
SUNRISE: 0531 JUL 15							SUNSET: 1924						SUNRISE: 0534 JUL 21							SUNSET: 1922									
03	SCT	250			10.00	JUL 15	79	73	75	82	0	00	29.85	29.95	03	SCT	250			10.00	JUL 21	80	72	75	77	3	24	29.91	30.02
06	BKN	250			10.00		76	73	74	90	0	00	29.87	29.98	06	FEW	250			10.00		78	73	75	85	0	00	29.92	30.03
09	SCT	250			10.00		86	73	77	65	8	28	29.91	30.02	09	BKN	250			10.00		88	68	74	52	7	32	29.93	30.04
12	BKN	250			10.00		95	68	76	41	3	24	29.92	30.02	12	BKN	250			10.00		96	63	74	34	5	VR	29.88	29.99
15	BKN	250			10.00		95	64	74	36	10	13	29.86	29.97	15	BKN	250			10.00		99	64	75	32	10	10	29.82	29.93
18	BKN	250			10.00		87	72	77	61	14	14	29.87	29.98	18	FEW	070			10.00		94	69	77	44	15	12	29.80	29.90
21	BKN	250			10.00		84	72	76	67	5	19	29.91	30.01	21	SCT	250			10.00		85	65	72	51	7	16	29.84	29.95
24	BKN	250			10.00		82	72	75	72	0	00	29.92	30.02	24	SCT	250			10.00		78	68	71	71	0	00	29.83	29.94
SUNRISE: 0531 JUL 16							SUNSET: 1924						SUNRISE: 0534 JUL 22							SUNSET: 1921									
03	OVC	250			10.00	JUL 16	78	71	73	79	0	00	29.91	30.02	03	BKN	250			10.00	JUL 22	76	69	71	79	0	00	29.81	29.91
06	SCT	250			10.00		76	72	73	87	3	35	29.94	30.05	06	BKN	250			9.00		77	71	73	82	6	04	29.83	29.93
09	BKN	250			10.00		87	72	77	61	6	VR	29.97	30.08	09	BKN	250			10.00		89	73	78	59	9	06	29.82	29.93
12	SCT	250			10.00		95	68	76	41	8	16	29.95	30.06	12	BKN	250			10.00		96	68	77	40	17	10	29.81	29.91
15	BKN	250			10.00		97	65	75	35	9	11	29.89	30.00	15	BKN	250			10.00		91	70	76	50	17	12	29.79	29.89
18	SCT	250			10.00		91	70	76	50	13	17	29.88	29.98	18	BKN	250			10.00		87	70	75	57	13	12	29.78	29.89
21	SCT	250			10.00		85	70	75	61	7	17	29.91	30.01	21	BKN	250			10.00		83	72	75	70	11	06	29.78	29.89
24	FEW	250			10.00		80	72	75	77	0	00	29.93	30.03	24	SCT	250			10.00		79	74	76	85	13	08	29.80	29.91
SUNRISE: 0532 JUL 17							SUNSET: 1924						SUNRISE: 0535 JUL 23							SUNSET: 1921									
03	CLR	NC			10.00	JUL 17	74	71	72	90	0	00	29.92	30.02	03	BKN	250			10.00	JUL 23	79	73	75	82	9	03	29.79	29.89
06	FEW	025			10.00		73	71	72	93	0	00	29.94	30.04	06	BKN	250			10.00		75	72	73	90	9	04	29.82	29.92
09	FEW	026			10.00		87	70	75	57	7	12	29.96	30.06	09	BKN	250			10.00		83	73	76	72	11	08	29.83	29.93
12	BKN	065			10.00		93	64	74	38	8	11	29.94	30.05	12	BKN	130			10.00		87	71	76	59	18	10	29.82	29.93
15	SCT	065			10.00		95	64	74	36	11	11	29.88	29.98	15	SCT	130			10.00		88	71	76	57	22	10	29.78	29.89
18	FEW	060			10.00		91	65	74	42	15	12	29.84	29.95	18	BKN	130			10.00		81	75	77	82	10	11	29.78	29.89
21	CLR	NC			10.00		84	68	73	59	7	18	29.86	29.96	21	SCT	110			10.00		77	74	75	91	9	09	29.80	29.91
24	CLR	NC			10.00		79	70	73	74	3	17	29.88	29.98	24	OVC	250			10.00		77	74	75	91	11	09	29.82	29.92
SUNRISE: 0532 JUL 18							SUNSET: 1923						SUNRISE: 0536 JUL 24							SUNSET: 1920									
03	CLR	NC			10.00	JUL 18	72	70	71	93	0	00	29.86	29.97	03	BKN	250			10.00	JUL 24	76	74	75	94	7	09	29.81	29.91
06	SCT	250			10.00		73	70	71	90	0	00	29.89	29.99	06	BKN	060			7.00		77	74	75	91	5	13	29.85	29.96
09	SCT	250			10.00		86	70	75	59	3	19	29.90	30.00	09	BKN	060			3.00	-RA RA BR	75	73	74	94	8	13	29.90	30.01
12	SCT	050			10.00		94	65	74	38	9	12	29.88	29.98	12	BKN	100			10.00		79	74	76	85	9	07	29.90	30.01
15	SCT	100			10.00		82	64	70	55	10	18	29.85	29.96	15	OVC	130			10.00		80	73	75	79	8	10	29.89	30.00
18	SCT	250			10.00		89	68	75	50	15	13	29.81	29.91	18	OVC	250			10.00		76	73	74	90	3	11	29.89	30.00
21	CLR	NC			10.00		81	70	74	69	5	16	29.84	29.94	21	BKN	250			10.00		76	74	75	94	6	12	29.90	30.00
24	CLR	NC			10.00		77	71	73	82	0	00	29.88	29.99	24	SCT	250			7.00		77	75	76	94	3	03	29.92	30.03

OBSERVATIONS AT 3-HOURLY INTERVALS

HOUSTON, TX
JULY 2008

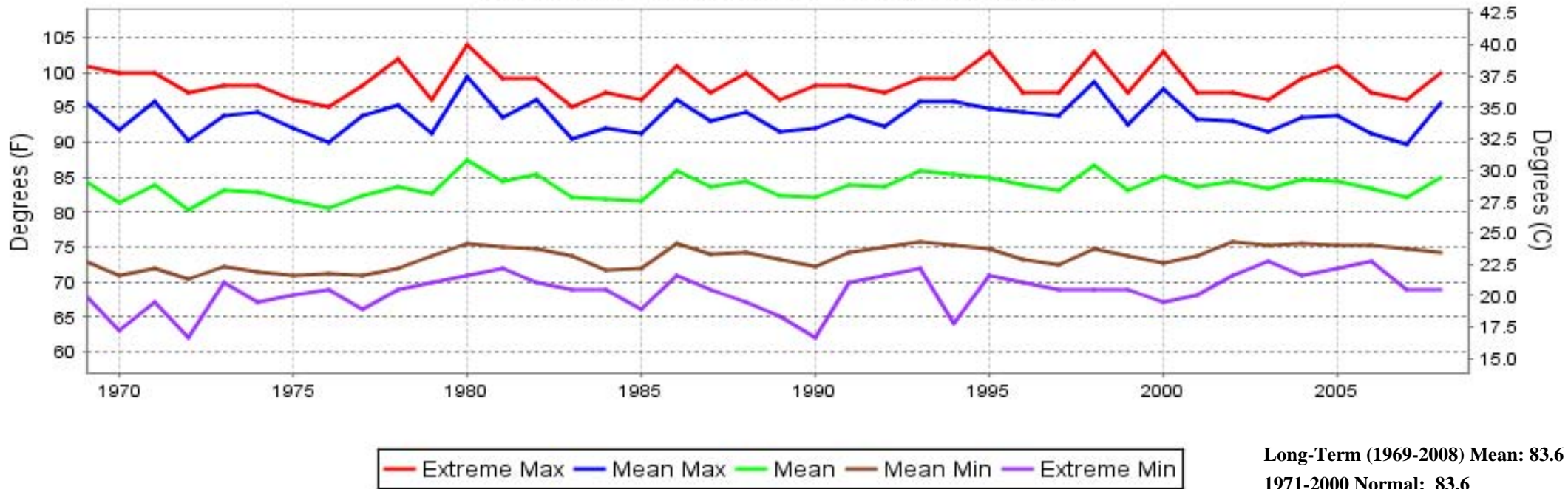
KIAH

WBAN # 12960

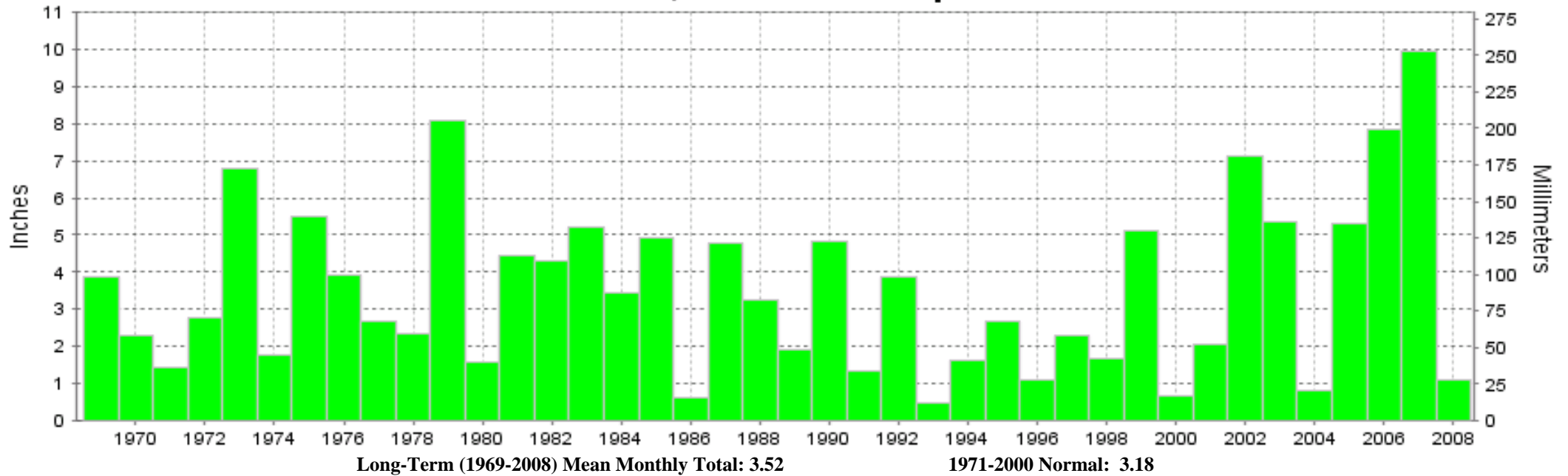
HOUR (LST)	SKY COVER	CEILING 100's of FT.	SATELLITE		WEATHER	TEMPERATURE °F			WIND SPEED (MPH) DIRECTION Tens of Deg	PRESSURE (INCHES, HG)																						
			Observation Time (LST)	Eff Cl'd Amt Oktas		VISIBILITY (MILES)	DRY BULB	DEW POINT		WET BULB	RELATIVE HUMIDITY (PCT)	STATION	SEA LEVEL																			
														WEATHER																		
SUNRISE: 0536						JUL 25						SUNSET: 1920																				
03	SCT	250			7.00	MIFG	76	75	75	97	0	00	29.93	30.03	03	SCT	250			10.00	BR	74	73	73	97	0	00	29.97	30.08			
06	SCT	250			5.00	BR	74	73	73	97	0	00	29.97	30.08	06	SCT	250			10.00		84	74	77	72	10	18	30.01	30.12			
09	SCT	250			10.00		84	74	77	72	10	18	30.01	30.12	09	SCT	250			10.00		93	69	76	46	8	21	30.01	30.11			
12	BKN	250			10.00		93	69	76	46	8	21	30.01	30.11	12	BKN	250			10.00		93	70	77	47	10	15	29.98	30.08			
15	BKN	250			10.00		93	70	77	47	10	15	29.98	30.08	15	BKN	250			10.00		91	71	77	52	11	16	29.94	30.04			
18	BKN	250			10.00		91	71	77	52	11	16	29.94	30.04	18	BKN	250			10.00		84	74	77	72	8	18	29.96	30.06			
21	BKN	250			10.00		84	74	77	72	8	18	29.96	30.06	21	BKN	250			10.00		81	75	77	82	5	19	30.00	30.10			
24	FEW	250			10.00		81	75	77	82	5	19	30.00	30.10	SUNRISE: 0537						JUL 26						SUNSET: 1919					
03	SCT	250			9.00		79	75	76	88	3	20	29.98	30.10	03	SCT	250			7.00		79	75	76	88	0	00	30.01	30.11			
06	FEW	250			7.00		79	75	76	88	0	00	30.01	30.11	06	FEW	250			10.00		85	73	77	67	8	22	30.03	30.13			
09	SCT	250			10.00		85	73	77	67	8	22	30.03	30.13	09	SCT	250			10.00		92	66	74	42	6	VR	29.98	30.09			
12	SCT	250			10.00		92	66	74	42	6	VR	29.98	30.09	12	SCT	250			10.00		96	62	73	32	6	24	29.91	30.02			
15	FEW	250			10.00		96	62	73	32	6	24	29.91	30.02	15	FEW	250			10.00		94	65	74	38	6	18	29.86	29.97			
18	CLR	NC			10.00		94	65	74	38	6	18	29.86	29.97	18	CLR	NC			10.00		87	65	72	48	7	21	29.86	29.97			
21	CLR	NC			10.00		87	65	72	48	7	21	29.86	29.97	21	CLR	NC			10.00		81	66	71	60	6	23	29.90	30.01			
24	CLR	NC			10.00		81	66	71	60	6	23	29.90	30.01	SUNRISE: 0537						JUL 27						SUNSET: 1919					
03	FEW	250			10.00		78	72	74	82	6	24	29.88	29.99	03	FEW	250			7.00		75	72	73	90	5	24	29.87	29.98			
06	FEW	250			7.00		75	72	73	90	5	24	29.87	29.98	06	FEW	250			10.00		84	68	73	59	8	25	29.89	30.00			
09	FEW	250			10.00		84	68	73	59	8	25	29.89	30.00	09	FEW	250			10.00		93	63	73	37	0	00	29.86	29.96			
12	FEW	250			10.00		93	63	73	37	0	00	29.86	29.96	12	FEW	250			10.00		97	55	70	24	10	16	29.80	29.90			
15	FEW	250			10.00		97	55	70	24	10	16	29.80	29.90	15	FEW	250			10.00		96	60	72	30	9	17	29.76	29.86			
18	FEW	250			10.00		96	60	72	30	9	17	29.76	29.86	18	FEW	250			10.00		86	70	75	59	9	18	29.80	29.90			
21	FEW	250			10.00		86	70	75	59	9	18	29.80	29.90	21	FEW	250			10.00		80	72	75	77	6	22	29.80	29.90			
24	CLR	NC			10.00		80	72	75	77	6	22	29.80	29.90	SUNRISE: 0538						JUL 28						SUNSET: 1918					
03	CLR	NC			10.00		77	73	74	88	5	21	29.79	29.89	03	CLR	NC			10.00		77	73	74	88	5	21	29.79	29.89			
06	BKN	250			7.00		77	73	74	88	3	VR	29.79	29.90	06	BKN	250			7.00		77	73	74	88	3	VR	29.79	29.90			
09	SCT	250			10.00		84	72	76	67	8	24	29.82	29.92	09	SCT	250			10.00		84	72	76	67	8	24	29.82	29.92			
12	SCT	250			10.00		91	69	76	49	3	VR	29.80	29.91	12	SCT	250			10.00		91	69	76	49	3	VR	29.80	29.91			
15	SCT	250			10.00		97	67	76	38	7	19	29.75	29.85	15	SCT	250			10.00		97	67	76	38	7	19	29.75	29.85			
18	SCT	250			10.00		92	72	78	52	13	17	29.74	29.85	18	SCT	250			10.00		92	72	78	52	13	17	29.74	29.85			
21	FEW	250			10.00		83	71	75	67	8	17	29.78	29.88	21	FEW	250			10.00		83	71	75	67	8	17	29.78	29.88			
24	CLR	NC			10.00		80	72	75	77	5	19	29.80	29.91	24	CLR	NC			10.00		80	72	75	77	5	19	29.80	29.91			
SUNRISE: 0539						JUL 29						SUNSET: 1917																				
03	SCT	250			10.00		77	72	74	85	3	19	29.78	29.89	03	SCT	250			10.00		77	72	74	85	3	19	29.78	29.89			
06	SCT	250			10.00		74	72	73	94	0	00	29.79	29.89	06	SCT	250			10.00		74	72	73	94	0	00	29.79	29.89			
09	SCT	250			10.00		85	70	75	61	7	VR	29.82	29.93	09	SCT	250			10.00		85	70	75	61	7	VR	29.82	29.93			
12	SCT	250			10.00		92	68	75	45	8	17	29.80	29.91	12	SCT	250			10.00		92	68	75	45	8	17	29.80	29.91			
15	SCT	250			10.00		96	68	77	40	15	16	29.73	29.83	15	SCT	250			10.00		96	68	77	40	15	16	29.73	29.83			
18	SCT	250			10.00		92	68	75	45	15	17	29.72	29.83	18	SCT	250			10.00		92	68	75	45	15	17	29.72	29.83			
21	FEW	250			10.00		84	72	76	67	6	18	29.76	29.86	21	FEW	250			10.00		84	72	76	67	6	18	29.76	29.86			
24	FEW	250			10.00		81	72	75	74	7	18	29.79	29.90	24	FEW	250			10.00		81	72	75	74	7	18	29.79	29.90			
SUNRISE: 0539						JUL 30						SUNSET: 1917																				
03	FEW	250			10.00		79	73	75	82	3	16	29.77	29.88	03	FEW	250			10.00		79	73	75	82	3	16	29.77	29.88			
06	FEW	250			10.00		78	73	75	85	3	19	29.76	29.86	06	FEW	250			10.00		78	73	75	85	3	19	29.76	29.86			
09	BKN	250			10.00		86	73	77	65	8	22	29.78	29.88	09	BKN	250			10.00		86	73	77	65	8	22	29.78	29.88			
12	SCT	250			10.00		93	69	76	46	8	25	29.77	29.87	12	SCT	250			10.00		93	69	76	46	8	25	29.77	29.87			
15	BKN	250			10.00		97	66	76	36	6	20	29.70	29.81	15	BKN	250			10.00		97	66	76	36	6	20	29.70	29.81			
18	SCT	250			10.00		94	68	76	43	11	19	29.65	29.75	18	SCT	250			10.00		94	68	76	43	11	19	29.65	29.75			
21	FEW	250			10.00		85	71	75	63	8	20	29.72	29.82	21	FEW	250			10.00		85	71	75	63	8	20	29.72	29.82			
24	SCT	250			10.00		82	73	76	74	8	19	29.75	29.86	24	SCT	250			10.00		82	73	76	74	8	19	29.75	29.86			

HOUR (LST)	SKY COVER	CEILING 100's of FT.	SATELLITE		WEATHER	TEMPERATURE °F			WIND SPEED (MPH) DIRECTION Tens of Deg	PRESSURE (INCHES, HG)																			
			Observation Time (LST)	Eff Cl'd Amt Oktas		VISIBILITY (MILES)	DRY BULB	DEW POINT		WET BULB	RELATIVE HUMIDITY (PCT)	STATION	SEA LEVEL																
														WEATHER															
SUNRISE: 0540						JUL 31						SUNSET: 1916																	
03	SCT	250			10.00		80	75	77	85	3	19	29.74	29.85	03	SCT	250			10.00		78	74	75	88	5	18	29.75	29.86
06	BKN	250			10.00		78	74	75	88	5	18	29.75	29.86	06	BKN	250			10.00		85	74	77	70	11	22	29.77	29.88
09	BKN	250			10.00		85	74	77	70	11	22	29.77	29.88	09	BKN	250			10.00		94	69	77	44	9	26	29.75	29.85
12	SCT	043			10.00		94	69	77	44	9	26	29.75	29.85	12	SCT	043			10.00		98	67	76	36	8	27	29.69	29.79
15	SCT	060			10.00		98	67	76																				

HOUSTON, TX JULY Temperatures



HOUSTON, TX JULY Precipitation





**JULY 2008
HOUSTON, TX**

**LOCAL CLIMATOLOGICAL DATA
NOAA, National Climatic Data Center**

I certify that this is an official publication of the National Oceanic and Atmospheric Administration (NOAA). It is compiled using information from weather observing sites operated by NOAA-National Weather Service / Department Of Transportation-Federal Aviation Administration and received at the National Climatic Data Center (NCDC), Asheville, North Carolina 28801.

DIRECTOR

NCDC now offers an annual online subscription for the **Edited Local Climatological Data Publication**. When you purchase this subscription service, you will have **immediate online access** to all previous publications back to July 1996 and all publications thereafter until the expiration of the subscription. Your subscription is valid for one year after purchase. **The total cost for online delivery (including back issues) is significantly less than the cost for offline delivery.** To order this and other subscriptions online with your credit card, go to: **www.ncdc.noaa.gov** and choose subscriptions.

We welcome your questions or comments, please contact us at:

Toll Free Number (866) 742-3322 (voice)

Fax Number : (304) 726-4409

TDD : (828) 271-4010

or Email : ncdc.info@noaa.gov

Local Climatological Data is available at www.ncdc.noaa.gov

United States
Department of Commerce

National Oceanic and
Atmospheric Administration

National Environmental Satellite
Atmospheric Administration

For address correction, please return a photocopy of this page to Subscription Services indicating changes

NCDC Subscription Services Center
310 State Route 956 Building 300
Rocket Center, WV 26726

OFFICIAL BUSINESS, PENALTY FOR PRIVATE USE \$300

FIRST CLASS
POSTAGE AND FEES PAID
NOAA
PERMIT G-19