



JULY 2009

LOCAL CLIMATOLOGICAL DATA

NOAA, National Climatic Data Center

HOUSTON, TX
G BUSH INTERCONTINENTAL AP/HOUSTON AP (KIAH)
 Lat:29° 59'N Long: 95° 21'W Elev (Ground) 94 Feet
 Time Zone : CENTRAL WBAN: 12960 ISSN#: 0198-5094



Date	Temperature °F						Deg Days BASE 65°		WEATHER	SNOW/ICE ON GND(IN)		PRECIPITATION ON GND(IN)		PRESSURE (INCHES OF HG)		WIND SPEED = MPH DIR = TENS OF DEGREES								Date
	MAXIMUM	MINIMUM	AVERAGE	DEP FROM NORMAL	AVERAGE DEW PT	AVERAGE WET BULB	HEATING	COOLING		0600 LST	1200 LST	2400 LST	2400 LST	AVERAGE STATION	AVERAGE SEA LEVEL	RESULTANT SPEED	RES DIR	AVERAGE SPEED	MAXIMUM					
																			3-SEC		2-MIN			
1	2	3	4	5	6	7	8	9	10	11	12	13	14	15	16	17	18	19	20	21	22	23	24	
01	98	77	88	5	68	74	0	23		0		0.0	0.00	29.74	29.84	2.4	01	4.6	20	01	15	03	01	
02	101	76	89	6	70	76	0	24		0		0.0	0.00	29.84	29.94	3.8	15	5.4	21	14	14	15	02	
03	100	75	88	5	74	78	0	23		0		0.0	0.00	29.90	30.01	5.5	15	6.6	22	12	17	12	03	
04	101	81	91	8	73	78	0	26		0		0.0	0.00	29.85	29.96	8.0	20	8.8	24	17	20	16	04	
05	102*	80	91	8	72	77	0	26		0		0.0	0.00	29.78	29.90	7.4	21	8.0	26	19	21	17	05	
06	98	81	90	7	72	77	0	25		0		0.0	0.00	29.73	29.86	3.7	23	6.0	23	25	15	16	06	
07	91	73	82	-1	75	77	0	17	TS TSRA RA FG BR	0		0.0	1.48	29.72	29.85	3.6	18	6.7	36	02	30	03	07	
08	98	80	89	6	75	79	0	24	BR	0		0.0	0.00	29.75	29.85	4.4	18	5.6	21	12	16	13	08	
09	99	80	90	7	75	79	0	25	BR	0		0.0	0.00	29.85	29.94	5.7	17	7.4	23	14	21	14	09	
10	98	81	90	7	74	78	0	25		0		0.0	0.00	29.95	30.05	6.1	16	7.2	21	14	18	14	10	
11	98	78	88	5	73	77	0	23		0		0.0	0.00	29.99	30.10	4.2	18	5.0	22	16	17	15	11	
12	98	77	88	5	73	77	0	23		0		0.0	0.00	29.96	30.08	3.3	19	4.6	20	16	16	15	12	
13	98	80	89	6	72	77	0	24		0		0.0	0.00	29.87	29.99	4.1	19	6.0	21	16	18	14	13	
14	98	80	89	6	73	77	0	24		0		0.0	0.00	29.86	29.98	6.4	19	8.0	25	15	22	15	14	
15	99	79	89	5	74	78	0	24		0		0.0	0.00	29.91	30.02	5.4	17	6.2	22	13	18	14	15	
16	98	79	89	5	74	78	0	24		0		0.0	0.00	29.88	29.99	4.8	16	6.9	32	14	28	15	16	
17	92	77	85	1	72	76	0	20		0		0.0	0.00	29.89	30.01	3.5	02	7.0	30	36	26	36	17	
18	98	74	86	2	72	75	0	21	RA BR	0		0.0	0.27	29.96	30.05	0.8	16	4.3	35	36	29	01	18	
19	93	71*	82	-2	72	75	0	17	BR	0		0.0	0.00	29.94	30.06	4.0	14	6.9	24	15	21	16	19	
20	94	77	86	2	74	77	0	21	TS RA	0		0.0	0.01	29.83	29.96	7.0	17	7.8	29	17	25	15	20	
21	96	81	89	5	74	77	0	24	TS	0		0.0	0.00	29.78	29.89	9.2	19	9.8	25	19	18	17	21	
22	96	74	85	1	73	77	0	20	TS TSRA RA	0		0.0	0.44	29.82	29.92	4.0	24	6.4	28	25	20	34	22	
23	97	75	86	2	73	76	0	21	TS TSRA RA BR	0		0.0	0.17	29.86	29.97	2.2	23	4.8	44*	35	38*	35	23	
24	91	75	83	-1	72	76	0	18	RA	0		0.0	T	29.88	29.99	1.1	18	2.5	13	04	9	06	24	
25	97	76	87	3	73	77	0	22		0		0.0	0.00	29.86	29.98	5.1	18	5.7	23	15	18	15	25	
26	97	79	88	4	74	77	0	23	TS	0		0.0	0.00	29.87	29.99	5.0	18	6.8	26	14	22	15	26	
27	94	78	86	2	75	78	0	21	TS RA	0		0.0	0.11	29.83	29.96	7.6	19	8.3	28	23	20	22	27	
28	97	81	89	5	73	78	0	24		0		0.0	0.00	29.77	29.88	9.8	19	10.2	28	16	20	16	28	
29	97	81	89	5	75	78	0	24		0		0.0	0.00	29.77	29.87	10.9	18	11.2	30	15	22	16	29	
30	99	83	91*	7	75	79	0	26	RA	0		0.0	0.02	29.80	29.90	6.3	18	8.3	24	36	20	01	30	
31	87	77	82*	-2	78	79	0	17	TS TSRA RA BR	0		0.0	0.34	29.90	30.01	2.8	14	5.8	20	11	17	04	31	

96.8	77.9	87.4	☼	73.3	77.2	0.0	22.5	< MONTHLY AVERAGES TOTALS >				0.0	2.84	29.85	29.96	4.4	18	6.7	< MONTHLY AVERAGES			
3.2	4.4	3.8		-----DEPARTURE FROM NORMAL ----->										-0.34	SUNSHINE, CLOUD, & VISIBILITY TABLES ON PAGE 3							

DEGREE DAYS				GREATEST 24-HR PRECIPITATION : 1.48 DATE : 07				SEA LEVEL PRESSURE			
MONTHLY				GREATEST 24-HR SNOWFALL : 0.0 DATE :				MAXIMUM : 30.15 11 1130			
TOTAL DEPARTURE				GREATEST SNOW DEPTH : 0 DATE :				MINIMUM : 29.78 06 1853			
SEASON TO DATE				NUMBER OF -> DAYS WITH				PRECIPITATION >= 0.01 INCH: 8			
HEATING : 0 0 0 0				MAXIMUM TEMP >= 90 : 30				MINIMUM TEMP <= 32 : 0			
COOLING : 699 126 2049 417				MAXIMUM TEMP <= 32 : 0				PRECIPITATION >= 0.10 INCH: 6			
				THUNDERSTORMS : 8				HEAVY FOG : 0			

JULY 2009
HOUSTON, TX

HOURLY PRECIPITATION

(WATER EQUIVALENT IN INCHES)

HOUSTON, TX (KIAH)
JULY 2009

WBAN # 12960

Date	FOR HOUR (LST) ENDING AT												Date	FOR HOUR (LST) ENDING AT												Date	Sum of Hourly Data	2400 LST Water Equiv.
	1	2	3	4	5	6	7	8	9	10	11	12		13	14	15	16	17	18	19	20	21	22	23	24			
01													01												01	0.00	0.00	
02													02												02	0.00	0.00	
03													03												03	0.00	0.00	
04													04												04	0.00	0.00	
05													05												05	0.00	0.00	
06													06												06	0.00	0.00	
07						0.71	0.03	0.54	0.09	0.05	0.02	0.04	07												07	1.48	1.48	
08													08												08	0.00	0.00	
09													09												09	0.00	0.00	
10													10												10	0.00	0.00	
11													11												11	0.00	0.00	
12													12												12	0.00	0.00	
13													13												13	0.00	0.00	
14													14												14	0.00	0.00	
15													15												15	0.00	0.00	
16													16												16	0.00	0.00	
17													17						T						17	0.00	0.00	
18													18					T	0.26	0.01					18	0.27	0.27	
19													19												19	0.00	0.00	
20													20			0.01	T								20	0.01	0.01	
21													21												21	0.00	0.00	
22													22							T	0.44				22	0.44	0.44	
23													23			0.17				T					23	0.17	0.17	
24				T							T		24							T					24	T	T	
25					T								25												25	0.00	0.00	
26													26												26	0.00	0.00	
27													27	0.11	T	T	T								27	0.11	0.11	
28													28												28	0.00	0.00	
29													29												29	0.00	0.00	
30												0.02	30												30	0.02	0.02	
31												T	31	0.19	0.10	0.04	0.01								31	0.34	0.34	

* Indicates sum of Hourly and Daily disagree.

MAXIMUM SHORT DURATION PRECIPITATION (See Note)

Time Period (Minutes)	5	10	15	20	30	45	60	80	100	120	150	180
Precipitation (Inches)	0.29	0.47	0.63	0.70	0.71	0.72	0.73	0.73	0.97	1.20	1.30	1.35
Ending Date	07	07	07	07	07	07	07	07	07	07	07	07
Ending Time (Hr/Min)	0556	0555	0558	0558	0559	0613	0626	0626	0723	0737	0803	0828

Note : The hourly and daily precipitation totals are printed in the last 2 columns and hi-lighted in red when they disagree. NWS does not edit ASOS hourly values but may edit daily and monthly totals. Hourly, daily, and monthly totals are printed as reported by the ASOS site.

Date and time are not entered for TRACE amounts.

OBSERVATIONS AT 3-HOURLY INTERVALS

HOUSTON, TX
JULY 2009

KIAH

WBAN # 12960

HOUR (LST)	SKY COVER	CEILING 100's of FT.	SATELLITE		WEATHER	TEMPERATURE °F			WIND SPEED (MPH) DIRECTION Tens of Deg	PRESSURE (INCHES, HG)		HOUR (LST)	SKY COVER	CEILING 100's of FT.	SATELLITE		WEATHER	TEMPERATURE °F			WIND SPEED (MPH) DIRECTION Tens of Deg	PRESSURE (INCHES, HG)							
			Observation Time (LST)	Eff Cld Amt Oktas		VISIBILITY (MILES)	DRY BULB	DEW POINT		WET BULB	RELATIVE HUMIDITY (PCT)				STATION	SEA LEVEL		Observation Time (LST)	Eff Cld Amt Oktas	VISIBILITY (MILES)		DRY BULB	DEW POINT	WET BULB	RELATIVE HUMIDITY (PCT)	STATION	SEA LEVEL		
																												Observation Time (LST)	Eff Cld Amt Oktas
SUNRISE: 0524						JUL 01						SUNSET: 1927																	
03	BKN	250			10.00	JUL 01	78	72	74	82	0	00	29.69	29.80	03	BKN	250			10.00	JUL 07	83	76	78	80	5	20	29.73	29.83
06	BKN	250			8.00		78	73	75	85	0	00	29.73	29.84	06	OVC	018			6.50	TS+RA FG	74	74	74	100	23	04	29.75	29.85
09	BKN	250			10.00		90	73	78	57	5	31	29.75	29.86	09	OVC	250			6.00	RA BR	76	75	75	97	5	24	29.79	29.90
12	OVC	130			10.00		91	70	76	50	3	27	29.77	29.87	12	OVC	250			10.00		79	75	76	88	3	35	29.77	29.88
15	BKN	250			10.00		95	67	76	40	11	03	29.73	29.83	15	SCT	250			10.00		90	73	78	57	8	16	29.72	29.82
18	SCT	250			10.00		94	58	71	30	8	03	29.71	29.81	18	SCT	250			10.00		88	72	77	59	10	21	29.68	29.79
21	BKN	250			10.00		84	63	70	49	5	14	29.75	29.85	21	SCT	250			10.00		83	76	78	80	3	18	29.72	29.83
24	SCT	250			10.00		81	72	75	74	0	00	29.78	29.88	24	SCT	250			7.00		81	78	79	91	5	16	29.73	29.84
SUNRISE: 0524						JUL 02						SUNRISE: 0527						JUL 08											
03	BKN	250			10.00		77	73	74	88	0	00	29.79	29.89	03	SCT	250			6.00	BR	81	78	79	91	3	19	29.72	29.83
06	SCT	250			10.00		78	74	75	88	0	00	29.82	29.93	06	FEW	250			7.00		80	78	79	94	0	00	29.75	29.86
09	FEW	250			10.00		88	73	77	61	5	32	29.87	29.97	09	SCT	045			10.00		87	76	79	70	6	24	29.77	29.88
12	SCT	130			10.00		98	68	77	38	14	12	29.86	29.97	12	SCT	045			10.00		94	73	79	51	6	20	29.76	29.87
15	FEW	060			10.00		101	65	76	31	8	15	29.83	29.93	15	SCT	055			10.00		96	72	79	46	7	VR	29.72	29.82
18	SCT	250			10.00		97	59	72	28	11	14	29.82	29.93	18	SCT	250			10.00		94	76	81	56	14	14	29.71	29.81
21	CLR	NC			10.00		87	72	77	61	6	17	29.84	29.95	21	FEW	250			10.00		87	74	78	65	3	18	29.75	29.85
24	CLR	NC			10.00		82	75	77	79	3	19	29.88	29.98	24	SCT	250			9.00		83	77	79	82	6	19	29.78	29.89
SUNRISE: 0525						JUL 03						SUNRISE: 0527						JUL 09											
03	CLR	NC			10.00		78	74	75	88	0	00	29.89	29.99	03	SCT	250			7.00		81	77	78	88	3	18	29.79	29.90
06	FEW	250			10.00		76	74	75	94	0	00	29.93	30.04	06	SCT	250			6.00	BR	81	77	78	88	5	19	29.82	29.92
09	SCT	250			10.00		89	75	79	63	5	14	29.97	30.07	09	SCT	250			10.00		88	75	79	65	9	22	29.88	29.99
12	SCT	047			10.00		94	70	77	46	10	18	29.95	30.05	12	FEW	040			10.00		94	73	79	51	6	14	29.88	29.98
15	SCT	060			10.00		99	72	80	42	14	15	29.89	29.99	15	FEW	055			10.00		99	69	78	38	9	16	29.82	29.93
18	SCT	250			10.00		95	73	79	49	13	12	29.86	29.97	18	SCT	250			10.00		94	76	81	56	16	13	29.81	29.91
21	FEW	250			10.00		87	74	78	65	7	16	29.89	30.00	21	CLR	NC			10.00		88	75	79	65	6	17	29.86	29.97
24	CLR	NC			10.00		83	77	79	82	6	18	29.90	30.00	24	CLR	NC			10.00		84	76	78	77	6	18	29.90	30.01
SUNRISE: 0525						JUL 04						SUNRISE: 0528						JUL 10											
03	CLR	NC			10.00		82	76	78	82	0	00	29.90	30.01	03	CLR	NC			10.00		81	77	78	88	0	00	29.91	30.01
06	FEW	030			10.00		81	76	77	85	3	19	29.92	30.03	06	FEW	016			9.00		81	78	79	91	0	00	29.95	30.05
09	SCT	250			10.00		89	74	78	61	10	24	29.93	30.03	09	SCT	026			10.00		88	73	77	61	7	24	29.96	30.07
12	BKN	250			10.00		97	70	78	42	8	24	29.90	30.01	12	FEW	042			10.00		95	70	77	44	5	12	29.97	30.07
15	SCT	250			10.00		100	67	77	34	9	17	29.82	29.92	15	SCT	065			10.00		96	72	79	46	10	16	29.92	30.03
18	SCT	250			10.00		98	69	78	39	8	18	29.75	29.85	18	SCT	250			10.00		94	70	77	46	16	13	29.92	30.03
21	SCT	250			10.00		87	74	78	65	14	17	29.79	29.90	21	CLR	NC			10.00		86	73	77	65	9	17	29.97	30.07
24	SCT	250			10.00		83	75	77	77	13	19	29.84	29.94	24	CLR	NC			10.00		83	76	78	80	5	19	30.00	30.10
SUNRISE: 0526						JUL 05						SUNRISE: 0528						JUL 11											
03	SCT	250			10.00		82	75	77	79	6	19	29.81	29.91	03	CLR	NC			10.00		81	76	77	85	0	00	29.98	30.09
06	BKN	250			10.00		80	75	77	85	6	18	29.83	29.93	06	CLR	NC			10.00		79	76	77	91	0	00	30.00	30.10
09	OVC	250			10.00		86	75	78	70	14	22	29.83	29.94	09	SCT	021			10.00		87	73	77	63	5	25	30.03	30.15
12	BKN	250			10.00		96	71	78	44	8	21	29.82	29.92	12	SCT	050			10.00		93	70	77	47	3	VR	30.03	30.14
15	SCT	250			10.00		100	66	76	33	10	20	29.75	29.86	15	SCT	250			10.00		95	69	77	43	3	VR	29.98	30.08
18	SCT	250			10.00		97	68	77	39	15	18	29.71	29.81	18	SCT	250			10.00		93	72	78	51	9	18	29.96	30.06
21	SCT	250			10.00		87	73	77	63	11	19	29.75	29.86	21	SCT	250			10.00		87	72	77	61	8	17	29.98	30.09
24	BKN	250			10.00		83	75	77	77	6	19	29.80	29.90	24	CLR	NC			10.00		83	74	77	74	5	18	30.00	30.11
SUNRISE: 0526						JUL 06						SUNRISE: 0529						JUL 12											
03	BKN	250			10.00		81	74	76	79	0	00	29.77	29.88	03	CLR	NC			10.00		81	75	77	82	0	00	29.98	30.09
06	BKN	250			10.00		82	75	77	79	3	23	29.79	29.89	06	SCT	250			10.00		78	76	77	94	0	00	30.00	30.11
09	BKN	250			10.00		87	73	77	63	10	24	29.82	29.92	09	SCT	030			10.00		87	75	78	68	5	28	30.03	30.14
12	BKN	250			10.00		95	70	77	44	10	26	29.77	29.88	12	SCT	045			10.00		93	70	77	47	5	VR	30.01	30.12
15	OVC	250			10.00		96	68	77	40	5	29	29.72	29.82	15	FEW	060			10.00		96	69	77	42	5	VR	29.94	30.05
18	BKN	250			10.00		96	67	76	39	6	03	29.67	29.78	18	FEW	060			10.00		93	73	79	52	13	17	29.91	30.01
21	BKN	250			10.00		88	69	75	53	8	23	29.72	29.83	21	FEW	250			10.00		87	71	76	59	9	17	29.95	30.06
24	OVC	250			9.00		85	75	78	72	8	20	29.75	29.86	24	CLR	NC			10.00		83	75	77	77	8	19	29.96	30.06

OBSERVATIONS AT 3-HOURLY INTERVALS

HOUSTON, TX
JULY 2009

KIAH

WBAN # 12960

HOUR (LST)	SKY COVER	CEILING 100's of FT.	SATELLITE		WEATHER	TEMPERATURE °F			WIND		PRESSURE (INCHES, HG)		HOUR (LST)	SKY COVER	CEILING 100's of FT.	SATELLITE		WEATHER	TEMPERATURE °F			WIND		PRESSURE (INCHES, HG)											
			Observation Time (LST)	Eff Cld Amt Oktas		VISIBILITY (MILES)	DRY BULB	DEW POINT	WET BULB	RELATIVE HUMIDITY (PCT)	SPEED (MPH)	DIRECTION Tens of Deg				STATION	SEA LEVEL		Observation Time (LST)	Eff Cld Amt Oktas	VISIBILITY (MILES)	DRY BULB	DEW POINT	WET BULB	RELATIVE HUMIDITY (PCT)	SPEED (MPH)	DIRECTION Tens of Deg	STATION	SEA LEVEL						
SUNRISE: 0529						JUL 13						SUNSET: 1925						SUNRISE: 0533						JUL 19						SUNSET: 1923					
03	CLR	NC			10.00		81	75	77	82	5	20	29.92	30.02	03	SCT	250			7.00		72	71	71	97	6	01	29.97	30.07						
06	SCT	250			9.00		80	76	77	88	5	23	29.90	30.01	06	BKN	250			10.00		71	70	70	97	5	05	29.98	30.10						
09	SCT	025			10.00		86	73	77	65	10	26	29.93	30.03	09	BKN	250			10.00		80	74	76	82	5	11	30.02	30.13						
12	SCT	047			10.00		92	70	77	49	0	00	29.90	30.01	12	BKN	250			10.00		90	73	78	57	8	31	29.98	30.09						
15	SCT	250			10.00		98	68	77	38	6	06	29.85	29.95	15	BKN	250			10.00		87	70	75	57	13	16	29.92	30.03						
18	SCT	250			10.00		94	74	80	52	16	14	29.82	29.92	18	OVC	250			10.00		86	69	74	57	16	14	29.89	30.00						
21	CLR	NC			10.00		87	68	74	53	9	19	29.85	29.96	21	OVC	250			10.00		82	73	76	74	10	16	29.92	30.03						
24	CLR	NC			10.00		83	72	75	70	3	20	29.88	29.98	24	BKN	250			10.00		79	75	76	88	3	17	29.92	30.03						
SUNRISE: 0530						JUL 14						SUNSET: 1925						SUNRISE: 0533						JUL 20						SUNSET: 1922					
03	SCT	017			10.00		81	76	77	85	3	VR	29.86	29.96	03	SCT	250			10.00		79	75	76	88	0	00	29.89	29.99						
06	CLR	NC			10.00		80	75	77	85	6	24	29.89	30.00	06	OVC	250			10.00		78	76	77	94	8	10	29.90	30.01						
09	SCT	026			10.00		87	73	77	63	8	24	29.92	30.02	09	OVC	250			10.00		84	75	78	74	6	22	29.90	30.01						
12	FEW	050			10.00		93	69	76	46	9	22	29.88	29.98	12	SCT	130			10.00		90	72	77	56	3	VR	29.87	29.98						
15	FEW	060			10.00		97	69	77	40	3	VR	29.83	29.93	15	BKN	070			7.00		80	70	73	72	10	19	29.84	29.95						
18	SCT	250			10.00		93	73	79	52	17	17	29.82	29.93	18	BKN	250			10.00		87	73	77	63	11	17	29.79	29.89						
21	CLR	NC			10.00		85	73	77	67	9	17	29.89	29.99	21	OVC	250			10.00		83	75	77	77	9	17	29.82	29.92						
24	CLR	NC			10.00		82	75	77	79	6	19	29.90	30.01	24	OVC	250			10.00		82	76	78	82	9	16	29.79	29.90						
SUNRISE: 0531						JUL 15						SUNSET: 1924						SUNRISE: 0534						JUL 21						SUNSET: 1922					
03	CLR	NC			10.00		81	75	77	82	3	18	29.91	30.01	03	OVC	250			10.00		82	76	78	82	8	18	29.78	29.89						
06	SCT	100			10.00		80	76	77	88	0	00	29.94	30.05	06	BKN	250			10.00		81	76	77	85	7	17	29.81	29.92						
09	SCT	150			10.00		88	74	78	63	9	19	29.96	30.06	09	OVC	250			10.00		86	75	78	70	10	21	29.82	29.92						
12	SCT	048			10.00		95	70	77	44	5	21	29.95	30.06	12	BKN	250			10.00		92	71	77	50	9	24	29.80	29.90						
15	SCT	060			10.00		98	70	78	40	7	12	29.89	29.99	15	BKN	250			10.00		91	77	81	64	14	21	29.73	29.84						
18	FEW	055			10.00		94	74	80	52	14	16	29.88	29.98	18	BKN	250			10.00		91	73	78	56	17	17	29.72	29.83						
21	CLR	NC			10.00		87	72	77	61	8	17	29.90	30.01	21	BKN	250			10.00		84	74	77	72	9	17	29.76	29.87						
24	FEW	023			10.00		83	76	78	80	7	18	29.93	30.03	24	SCT	250			10.00		82	77	78	85	7	19	29.79	29.90						
SUNRISE: 0531						JUL 16						SUNSET: 1924						SUNRISE: 0534						JUL 22						SUNSET: 1921					
03	FEW	018			10.00		82	76	78	82	6	19	29.92	30.03	03	SCT	250			10.00		81	76	77	85	6	20	29.79	29.89						
06	SCT	250			10.00		80	76	77	88	0	00	29.93	30.03	06	BKN	250			9.00		81	76	77	85	5	24	29.82	29.93						
09	SCT	250			10.00		88	75	79	65	7	27	29.94	30.04	09	BKN	080			10.00		85	75	78	72	10	29	29.86	29.96						
12	SCT	250			10.00		93	70	77	47	6	VR	29.90	30.01	12	OVC	250			10.00		91	71	77	52	11	22	29.85	29.96						
15	SCT	070			10.00		92	74	79	56	15	13	29.85	29.96	15	OVC	250			10.00		96	69	77	42	7	21	29.80	29.91						
18	SCT	250			10.00		89	72	77	57	14	15	29.82	29.92	18	BKN	250			10.00		95	70	77	44	9	14	29.77	29.87						
21	SCT	250			10.00		86	71	76	61	8	18	29.85	29.96	21	BKN	250			10.00		79	72	74	79	6	28	29.84	29.94						
24	CLR	NC			10.00		83	75	77	77	5	19	29.89	29.99	24	BKN	250			10.00		77	74	75	91	0	00	29.85	29.95						
SUNRISE: 0532						JUL 17						SUNSET: 1924						SUNRISE: 0535						JUL 23						SUNSET: 1921					
03	CLR	NC			10.00		81	75	77	82	3	18	29.88	29.98	03	BKN	250			10.00		75	73	74	94	0	00	29.85	29.96						
06	SCT	250			10.00		77	75	76	94	0	00	29.89	29.99	06	BKN	250			10.00		78	75	76	91	0	00	29.87	29.98						
09	BKN	250			10.00		85	74	77	70	14	30	29.96	30.07	09	OVC	250			10.00		85	73	77	67	6	25	29.90	30.01						
12	BKN	130			10.00		87	69	75	55	13	02	29.92	30.03	12	BKN	250			10.00		92	72	78	52	10	30	29.88	29.99						
15	BKN	250			10.00		90	70	76	52	15	01	29.87	29.97	15	BKN	120			10.00		81	72	75	74	8	21	29.84	29.95						
18	SCT	250			10.00		90	69	76	50	14	04	29.84	29.95	18	BKN	130			10.00		81	71	74	72	13	03	29.87	29.98						
21	BKN	250			10.00		86	72	76	63	6	19	29.92	30.02	21	BKN	250			10.00		79	73	75	82	5	17	29.85	29.96						
24	SCT	250			10.00		81	73	75	77	0	00	29.94	30.04	24	SCT	250			9.00		76	73	74	90	0	00	29.87	29.98						
SUNRISE: 0532						JUL 18						SUNSET: 1923						SUNRISE: 0536						JUL 24						SUNSET: 1920					
03	SCT	250			10.00		78	72	74	82	0	00	29.92	30.02	03	OVC	250			10.00		76	74	75	94	0	00	29.86	29.97						
06	SCT	250			10.00		74	72	73	94	0	00	29.96	30.06	06	BKN	250			8.00		77	74	75	91	0	00	29.89	30.00						
09	SCT	250			10.00		87	74	78	65	9	25	29.98	30.09	09	BKN	130			10.00		82	75	77	79	0	00	29.92	30.02						
12	SCT	250			10.00		93	70	77	47	5	32	29.96	30.06	12	OVC	250			10.00		87	75	78	68	3	VR	29.92	30.03						
15	SCT	250			10.00		96	68	77	40	5	VR	29.88	29.99	15	BKN	250			10.00		91	70	76	50	5	02	29.87	29.98						
18	OVC	044			2.00	+RA BR	74	73	73	97	9	07	29.96	30.07	18	BKN	250			10.00		89	68	75	50	5	14	29.85	29.96						
21	FEW	009			10.00		75	73	74	94	10	14	29.98	30.09	21	SCT	250			10.00		83	70	74	65	6	20	29.86	29.96						
24	SCT	250			10.00		75	72	73	90	0	00	29.97	30.08	24	CLR	NC			10.00		79	70	73	74	0	00	29.87	29.97						

OBSERVATIONS AT 3-HOURLY INTERVALS

HOUSTON, TX
JULY 2009

KIAH

WBAN # 12960

HOUR (LST)	SKY COVER	CEILING 100's of FT.	SATELLITE		WEATHER	TEMPERATURE °F			WIND SPEED (MPH) DIRECTION Tens of Deg	PRESSURE (INCHES, HG)													
			Observation Time (LST)	Eff Cl'd Amt Oktas		VISIBILITY (MILES)	DRY BULB	DEW POINT		WET BULB	RELATIVE HUMIDITY (PCT)	STATION	SEA LEVEL										
														WEATHER									
SUNRISE: 0536						JUL 25						SUNSET: 1920											
03	SCT	250				78	74	75	88	0	00	29.87	29.97										
06	BKN	250				78	75	76	91	0	00	29.89	29.99										
09	SCT	250				86	76	79	72	6	22	29.90	30.01										
12	BKN	250				93	71	78	49	5	21	29.88	29.99										
15	OVC	250				95	69	77	43	3	14	29.84	29.94										
18	BKN	250				92	74	79	56	20	15	29.83	29.93										
21	BKN	250				85	74	77	70	7	18	29.86	29.97										
24	SCT	250				82	75	77	79	7	18	29.89	29.99										
SUNRISE: 0537						JUL 26						SUNSET: 1919											
03	CLR	NC				80	75	77	85	0	00	29.89	29.99										
06	BKN	250				80	76	77	88	3	20	29.90	30.01										
09	SCT	250				86	75	78	70	10	23	29.92	30.02										
12	BKN	250				92	71	77	50	8	25	29.91	30.01										
15	BKN	250				96	69	77	42	7	VR	29.86	29.96										
18	BKN	250				90	75	79	61	16	12	29.83	29.93										
21	SCT	250				85	75	78	72	11	17	29.87	29.98										
24	BKN	250				82	77	78	85	8	19	29.87	29.98										
SUNRISE: 0537						JUL 27						SUNSET: 1919											
03	BKN	250				81	77	78	88	5	19	29.86	29.97										
06	BKN	250				78	76	77	94	0	00	29.89	29.99										
09	BKN	250				85	76	79	75	8	20	29.90	30.01										
12	BKN	250				93	73	79	52	8	26	29.88	29.98										
15	SCT	130				86	73	77	65	9	18	29.85	29.95										
18	BKN	250				91	74	79	58	11	18	29.79	29.89										
21	BKN	250				85	73	77	67	11	17	29.82	29.93										
24	SCT	250				83	76	78	80	10	17	29.81	29.92										
SUNRISE: 0538						JUL 28						SUNSET: 1918											
03	BKN	250				82	77	78	85	8	19	29.79	29.89										
06	BKN	250				81	76	77	85	6	18	29.79	29.90										
09	BKN	250				87	74	78	65	9	19	29.81	29.92										
12	BKN	130				94	69	77	44	13	21	29.80	29.90										
15	SCT	130				96	69	77	42	16	17	29.74	29.84										
18	BKN	250				92	72	78	52	11	17	29.72	29.83										
21	FEW	250				85	74	77	70	10	19	29.75	29.86										
24	SCT	250				83	76	78	80	6	19	29.77	29.88										
SUNRISE: 0539						JUL 29						SUNSET: 1917											
03	BKN	250				82	77	78	85	8	18	29.74	29.84										
06	OVC	250			8.00	82	78	79	88	6	19	29.79	29.89										
09	BKN	250				88	76	79	68	10	21	29.80	29.91										
12	BKN	250				95	72	79	47	11	17	29.79	29.90										
15	BKN	250				96	72	79	46	14	18	29.73	29.84										
18	BKN	250				91	71	77	52	16	18	29.73	29.83										
21	BKN	250				85	75	78	72	13	17	29.77	29.87										
24	BKN	250				83	77	79	82	10	17	29.78	29.88										
SUNRISE: 0539						JUL 30						SUNSET: 1917											
03	BKN	250				83	78	79	85	7	17	29.77	29.87										
06	BKN	250				83	79	80	88	9	18	29.79	29.90										
09	BKN	250				88	77	80	70	6	VR	29.85	29.95										
12	OVC	250				93	73	79	52	8	18	29.82	29.92										
15	BKN	250				93	76	81	58	9	10	29.75	29.86										
18	BKN	250				95	70	77	44	11	20	29.74	29.84										
21	BKN	250				86	75	78	70	10	18	29.81	29.92										
24	BKN	250				85	77	79	77	0	00	29.88	29.99										

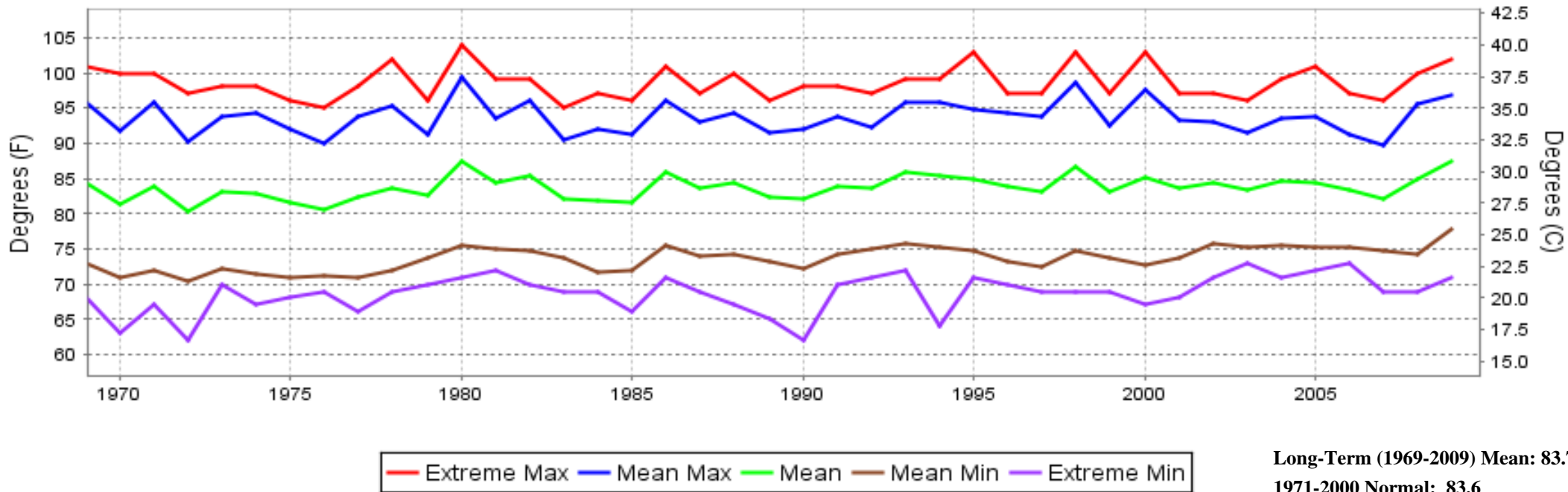
HOUR (LST)	SKY COVER	CEILING 100's of FT.	SATELLITE		WEATHER	TEMPERATURE °F			WIND SPEED (MPH) DIRECTION Tens of Deg	PRESSURE (INCHES, HG)													
			Observation Time (LST)	Eff Cl'd Amt Oktas		VISIBILITY (MILES)	DRY BULB	DEW POINT		WET BULB	RELATIVE HUMIDITY (PCT)	STATION	SEA LEVEL										
														WEATHER									
SUNRISE: 0540						JUL 31						SUNSET: 1916											
03	BKN	250				84	79	80	85	3	18	29.87	29.97										
06	BKN	250				83	79	80	88	3	20	29.90	30.01										
09	OVC	250				86	78	80	77	0	00	29.94	30.05										
12	SCT	030				80	75	77	85	10	12	29.96	30.07										
15	OVC	100				78	76	77	94	5	11	29.91	30.02										
18	BKN	250				82	78	79	88	11	11	29.86	29.96										
21	SCT	250				82	78	79	88	7	16	29.91	30.02										
24	SCT	250				82	79	80	91	5	17	29.91	30.01										

3-HOURLY OBSERVATION NOTES
 Sky Cover is the amount of the sky obscured. CLR or SKC = 0, FEW = 1/8-2/8, SCT = 3/8-4/8, BKN = 5/8-7/8, OVC = 8/8, W = Vertical Visibility = 8/8
 Ceiling is reported in hundreds of feet above ground level for clouds at or below 12,000 feet.
 NC = No Ceiling detected.
 & = Original observation contained additional weather elements.
 See page 3 for additional notes.

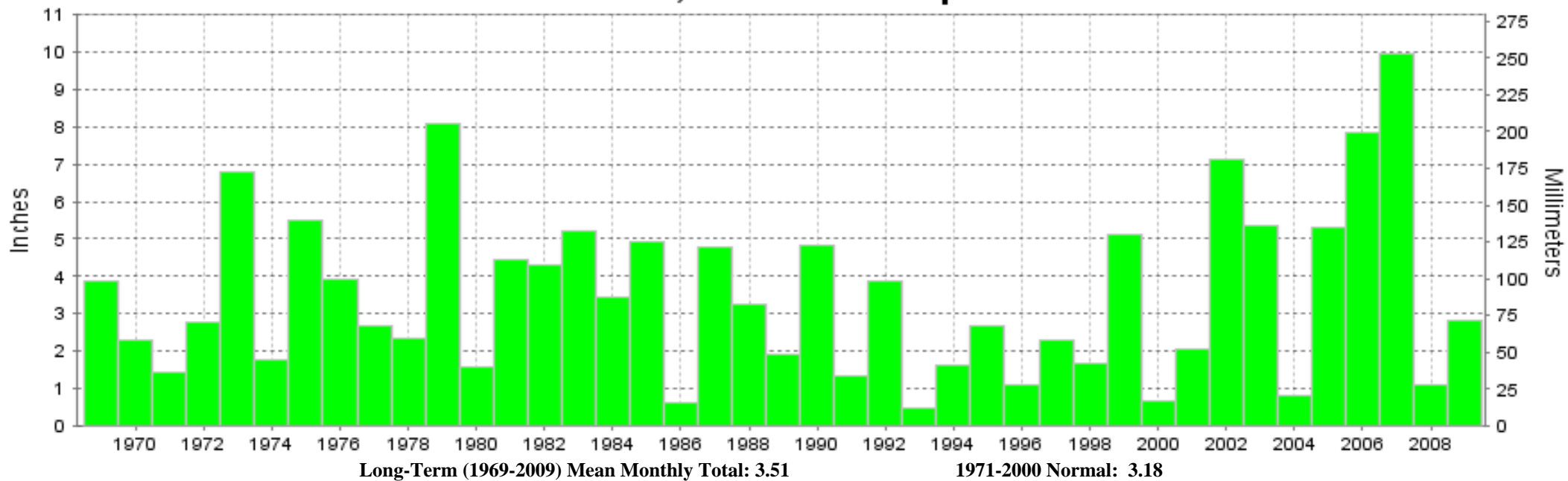
SUMMARY BY HOUR

HOUR (LST)	AVERAGES										RESULTANT WIND (MPH)	
	CEILOMETER	EFF CLD AMT	DRY BULB	DEW POINT	WET BULB	RELATIVE HUMIDITY	PRESSURE (Inches, HG)		VISIBILITY (Miles)	WIND SPEED (MPH)	SPEED	DIRECTION
							STATION	SEA LEVEL				
01			81	75	77	82	29.85	29.96	9.73	4	7	19
02			81	75	77	84	29.85	29.96	9.52	4	7	19
03			80	75	77	85	29.85	29.95	9.68	3	9	18
04			80	75	77	87	29.85	29.96	9.71	3	9	19
05			79	75	77	88	29.86	29.96	9.71	3	9	19
06			79	76	77	90	29.87	29.98	9.11	3	9	18
07			81	76	78	84	29.89	29.99	9.16	4	7	19
08			84	76	78	78	29.90	30.00	9.71	7	6	21
09			86	75	78	69	29.90	30.00	9.87	7	7	22
10			88	73	77	62	29.90	30.01	9.97	8	7	22
11			90	72	77	57	29.90	30.00	10.00	7	7	20
12			92	71	77	51	29.88	29.99	9.94	7	6	20
13			93	71	77	50	29.86	29.97	9.94	6	7	19
14			94	70	77	46	29.84	29.95	9.87	7	6	19
15			94	70	77	49	29.83	29.93	9.90	9	6	16
16			94	70	77	47	29.81	29.92	10.00	10	7	15
17			93	70	77	50	29.81	29.91	10.00	10	7	15
18			91	71	77	53	29.81	29.91	9.74	13	7	13
19			89	72	77	58	29.82	29.93	10.00	11	6	14
20			86	72	76	64	29.83	29.94	10.00	9	6	15
21			85	73	76	68	29.85	29.95	10.00	8	5	17
22			84	74	77	73	29.86	29.97	9.94	7	5	17
23			82	75	77	77	29.87	29.97	9.94	6	5	18
24			82	75	77	81	29.87	29.97	9.77	5	6	18

HOUSTON, TX JULY Temperatures



HOUSTON, TX JULY Precipitation





JULY 2009
HOUSTON, TX

LOCAL CLIMATOLOGICAL DATA NOAA, National Climatic Data Center

I certify that this is an official publication of the National Oceanic and Atmospheric Administration (NOAA). It is compiled using information from weather observing sites operated by NOAA-National Weather Service / Department Of Transportation-Federal Aviation Administration and received at the National Climatic Data Center (NCDC), Asheville, North Carolina 28801.

DIRECTOR

NCDC now offers an annual online subscription for the **Edited Local Climatological Data Publication**. When you purchase this subscription service, you will have **immediate online access** to all previous publications back to July 1996 and all publications thereafter until the expiration of the subscription. Your subscription is valid for one year after purchase. **The total cost for online delivery (including back issues) is significantly less than the cost for offline delivery.**

To order this and other subscriptions online with your credit card, go to: www.ncdc.noaa.gov and choose subscriptions.

We welcome your questions or comments, please contact us at:

Toll Free Number (866) 742-3322 (voice)

Fax Number : (304) 726-4409

TDD : (828) 271-4010

or Email : ncdc.info@noaa.gov

Local Climatological Data is available at www.ncdc.noaa.gov

NCDC Subscription Services Center
310 State Route 956 Building 300
Rocket Center, WV 26726
OFFICIAL BUSINESS, PENALTY FOR PRIVATE USE \$300

FIRST CLASS
POSTAGE AND FEES PAID
NOAA
PERMIT G-19

For address correction, please return a photocopy of this page to Subscription Services indicating changes