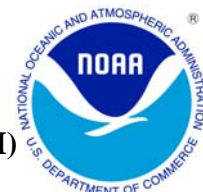




AUGUST 2009 LOCAL CLIMATOLOGICAL DATA

NOAA, National Climatic Data Center

HOUSTON, TX
G BUSH INTERCONTINENTAL AP/HOUSTON AP (KIAH)
Lat:29° 59'N Long: 95° 21'W Elev (Ground) 94 Feet
Time Zone : CENTRAL WBAN: 12960 ISSN#: 0198-5094



Date 1	Temperature °F						Deg Days BASE 65°		WEATHER 10	SNOW/ICE ON GND(IN)		PRECIPITATION ON GND(IN)		PRESSURE (INCHES OF HG)		WIND SPEED = MPH DIR = TENS OF DEGREES								Date 24
	MAXIMUM 2	MINIMUM 3	AVERAGE 4	DEP FROM NORMAL 5	AVERAGE DEW PT 6	AVERAGE WET BULB 7	HEATING 8	COOLING 9		0600 LST 11	1200 LST 12	2400 LST 13	2400 LST 14	AVERAGE STATION 15	AVERAGE SEA LEVEL 16	RESULTANT SPEED 17	RES DIR 18	AVERAGE SPEED 19	MAXIMUM					
																			3-SEC		2-MIN			
20	21	22	23	24																				
01	98	81	90	6	74	78	0	25		0		0.0	0.00	29.90	30.00	8.1	18	8.0	23	18	16	19	01	
02	96	82	89	5	74	78	0	24		0		0.0	0.00	29.91	30.01	4.7	20	7.2	21	15	17	15	02	
03	100	78	89	5	73	77	0	24		0		0.0	0.00	29.90	30.01	7.0	17	8.1	23	12	20	12	03	
04	97	75	86	2	74	78	0	21		0		0.0	0.00	29.90	30.01	5.9	16	6.8	22	15	18	15	04	
05	100	78	89	5	74	78	0	24		0		0.0	0.00	29.89	30.00	3.0	17	4.2	18	15	14	15	05	
06	100	80	90*	6	73	78	0	25		0		0.0	0.00	29.88	29.99	3.5	18	5.6	18	14	16	14	06	
07	99	77	88	4	72	77	0	23		0		0.0	0.00	29.90	30.00	5.3	18	5.8	26	16	22	16	07	
08	96	76	86	2	73	77	0	21		0		0.0	0.00	29.91	30.01	7.2	15	7.7	30	12	22	14	08	
09	93	77	85	1	75	78	0	20	TS TSRA RA	0		0.0	0.19	29.95	30.06	4.8	15	5.9	23	18	18	18	09	
10	96	77	87	3	76	78	0	22	TS RA	0		0.0	T	29.96	30.08	4.1	17	4.7	24	12	21	12	10	
11	99	76	88	4	74	78	0	23	MIFG	0		0.0	0.00	29.93	30.04	2.9	18	4.5	18	14	15	14	11	
12	101*	76	89	5	72	76	0	24	TS TSRA RA	0		0.0	0.65	29.90	30.01	1.5	28	4.3	70*	32	48*	31	12	
13	97	75	86	2	73	76	0	21	TS RA	0		0.0	T	29.86	29.98	0.4	12	4.2	30	02	25	02	13	
14	96	74	85	1	72	76	0	20		0		0.0	0.00	29.86	29.98	4.0	14	5.3	21	14	17	14	14	
15	96	75	86	2	73	76	0	21		0		0.0	0.00	29.83	29.94	4.7	13	5.0	23	12	18	12	15	
16	96	75	86	3	73	76	0	21		0		0.0	0.00	29.83	29.94	5.7	13	6.4	25	12	22	13	16	
17	97	76	87	4	73	77	0	22	RA	0		0.0	T	29.86	29.97	4.5	17	5.1	23	17	18	15	17	
18	95	76	86	3	74	77	0	21	TS RA	0		0.0	0.02	29.86	29.98	3.8	13	4.7	21	12	17	11	18	
19	95	76	86	3	75	77	0	21	TS	0		0.0	0.00	29.79	29.91	5.2	14	6.5	23	13	20	11	19	
20	100	77	89	6	75	78	0	24	TS TSRA RA	0		0.0	T	29.78	29.89	5.6	17	7.5	28	13	23	13	20	
21	100	73	87	4	75	77	0	22	TS TSRA RA BR	0		0.0	0.73	29.85	29.96	2.8	19	5.7	38	06	32	06	21	
22	98	74	86	3	72	76	0	21		0		0.0	0.00	29.86	29.98	0.6	14	4.8	21	05	17	11	22	
23	96	76	86	3	75	78	0	21	TS	0		0.0	0.00	29.85	29.97	3.5	15	4.8	20	11	16	12	23	
24	96	77	87	4	75	77	0	22	TS RA	0		0.0	T	29.88	29.99	2.8	14	3.8	28	10	22	14	24	
25	96	75	86	4	74	77	0	21		0		0.0	0.00	29.87	29.98	3.3	14	4.4	31	12	21	10	25	
26	92	78	85	3	72	76	0	20	RA	0		0.0	T	29.86	29.98	4.3	18	6.2	20	12	16	13	26	
27	93	74	84	2	70	74	0	19	RA	0		0.0	T	29.84	29.95	1.4	15	3.5	17	13	14	14	27	
28	95	73	84	2	71	74	0	19	TS TSRA RA FG+ FG BR	0		0.0	0.52	29.80	29.91	1.0	24	3.5	33	35	30	34	28	
29	93	73	83	1	70	74	0	18		0		0.0	0.00	29.78	29.90	2.9	35	4.4	15	35	13	01	29	
30	94	75	85	3	68	73	0	20		0		0.0	0.00	29.84	29.95	5.7	36	6.5	21	34	14	02	30	
31	87	73*	80*	-2	70	73	0	15		0		0.0	0.00	29.93	30.04	2.9	07	4.0	17	11	14	09	31	
96.4		76.1	86.3	Σ	73.0	76.5	0.0	21.5	< MONTHLY AVERAGES TOTALS >		0.0	2.11	29.87	29.98	3.0	16	5.5	< MONTHLY AVERAGES						
2.9		3.1	3.0		<-----DEPARTURE FROM NORMAL ----->							-1.72	SUNSHINE, CLOUD, & VISIBILITY TABLES ON PAGE 3											
DEGREE DAYS									GREATEST 24-HR PRECIPITATION : 0.73 DATE : 21				SEA LEVEL PRESSURE				DATE TIME							
MONTHLY				SEASON TO DATE					GREATEST 24-HR SNOWFALL : 0.0 DATE :				MAXIMUM : 30.13		10 1050									
TOTAL DEPARTURE				TOTAL DEPARTURE					GREATEST SNOW DEPTH : 0 DATE :				MINIMUM : 29.83		29 1653									
HEATING :		0 0		0 0		0 0		NUMBER OF ->		MAXIMUM TEMP >= 90 : 30		MINIMUM TEMP <= 32 : 0		PRECIPITATION >= 0.01 INCH: 5										
COOLING :		665 102		2714 519		THUNDERSTORMS : 11		MAXIMUM TEMP <= 32 : 0		MINIMUM TEMP <= 0 : 0		PRECIPITATION >= 0.10 INCH: 4												
								HEAVY FOG : 1		SNOWFALL >= 1.0 INCH : 0														

AUGUST 2009
HOUSTON, TX

HOURLY PRECIPITATION

(WATER EQUIVALENT IN INCHES)

HOUSTON, TX (KIAH)
AUGUST 2009

WBAN # 12960

Date	FOR HOUR (LST) ENDING AT												Date	FOR HOUR (LST) ENDING AT												Date	Sum of Hourly Data	2400 LST Water Equiv.
	1	2	3	4	5	6	7	8	9	10	11	12		13	14	15	16	17	18	19	20	21	22	23	24			
01													01												01	0.00	0.00	
02													02												02	0.00	0.00	
03													03												03	0.00	0.00	
04													04												04	0.00	0.00	
05													05												05	0.00	0.00	
06													06												06	0.00	0.00	
07													07												07	0.00	0.00	
08													08												08	0.00	0.00	
09												T	09				0.19	T							09	0.19	0.19	
10													10	T	T										10	T	T	
11													11												11	0.00	0.00	
12													12				0.61	T	T	0.04	T			12	0.65	0.65		
13													13			T		T						13	T	T		
14													14											14	0.00	0.00		
15													15											15	0.00	0.00		
16													16											16	0.00	0.00		
17													17								T			17	T	T		
18													18				0.02	T						18	0.02	0.02		
19													19											19	0.00	0.00		
20													20								T			20	T	T		
21													21					0.71	T	0.02	T			21	0.73	0.73		
22													22											22	0.00	0.00		
23													23											23	0.00	0.00		
24													24			T		T						24	T	T		
25													25											25	0.00	0.00		
26													26		T									26	T	T		
27													27	T										27	T	T		
28					0.02	T							28						0.50	T				28	0.52	0.52		
29									T	T			29											29	0.00	0.00		
30													30											30	0.00	0.00		
31													31											31	0.00	0.00		

* Indicates sum of Hourly and Daily disagree.

MAXIMUM SHORT DURATION PRECIPITATION (See Note)

Time Period (Minutes)	5	10	15	20	30	45	60	80	100	120	150	180
Precipitation (Inches)	0.30	0.43	0.50	0.57	0.68	0.71	0.71	0.71	0.71	0.71	0.72	0.73
Ending Date	28	28	12	21	21	21	21	21	21	21	21	21
Ending Time (Hr/Min)	1842	1842	1544	1741	1750	1755	1755	1755	1755	1755	1945	1952

Note : The hourly and daily precipitation totals are printed in the last 2 columns and hi-lighted in red when they disagree. NWS does not edit ASOS hourly values but may edit daily and monthly totals. Hourly, daily, and monthly totals are printed as reported by the ASOS site.

Date and time are not entered for TRACE amounts.

OBSERVATIONS AT 3-HOURLY INTERVALS

HOUSTON, TX
AUGUST 2009

KIAH

WBAN # 12960

HOUR (LST)	SKY COVER	CEILING 100's of FT.	SATELLITE		WEATHER	TEMPERATURE °F			WIND SPEED (MPH) DIRECTION Tens of Deg	PRESSURE (INCHES, HG)		HOUR (LST)	SKY COVER	CEILING 100's of FT.	SATELLITE		WEATHER	TEMPERATURE °F			WIND SPEED (MPH) DIRECTION Tens of Deg	PRESSURE (INCHES, HG)																																																																																																																																																																																																									
			Observation Time (LST)	Eff Cld Amt Oktas		VISIBILITY (MILES)	DRY BULB	DEW POINT		WET BULB	RELATIVE HUMIDITY (PCT)				STATION	SEA LEVEL		Observation Time (LST)	Eff Cld Amt Oktas	VISIBILITY (MILES)		DRY BULB	DEW POINT	WET BULB	RELATIVE HUMIDITY (PCT)	STATION	SEA LEVEL																																																																																																																																																																																																				
																												WEATHER	WEATHER																																																																																																																																																																																																		
SUNRISE: 0540						AUG 01						SUNSET: 1915						SUNRISE: 0544						AUG 07						SUNSET: 1911																																																																																																																																																																																																	
03	BKN	014			8.00	82	79	80	91	7	18	29.89	29.99	03	SCT	250			10.00	81	75	77	82	5	18	29.88	29.99	06	OVC	250			8.00	82	78	79	88	3	18	29.92	30.02	06	SCT	250			10.00	77	74	75	91	0	00	29.92	30.03	09	BKN	120			10.00	85	74	77	70	9	20	29.94	30.04	09	BKN	250			10.00	87	74	78	65	8	25	29.94	30.05	12	BKN	250			10.00	91	74	79	58	10	18	29.94	30.04	12	SCT	050			10.00	95	68	76	41	0	00	29.92	30.02	15	SCT	250			10.00	97	67	76	38	10	19	29.86	29.96	15	SCT	140			10.00	96	71	78	44	17	17	29.87	29.98	18	SCT	250			10.00	93	71	78	49	10	17	29.82	29.93	18	SCT	250			10.00	93	70	77	47	10	18	29.84	29.95	21	BKN	250			10.00	86	73	77	65	9	18	29.89	30.00	21	SCT	250			10.00	86	73	77	65	8	18	29.89	29.99	24	BKN	250			10.00	83	76	78	80	0	00	29.94	30.04	24	FEW	250			10.00	82	76	78	82	5	17	29.93	30.03
SUNRISE: 0541						AUG 02						SUNRISE: 0545						AUG 08						SUNSET: 1910																																																																																																																																																																																																							
03	BKN	250			8.00	82	77	78	85	5	20	29.88	29.98	03	FEW	250			10.00	81	75	77	82	0	00	29.92	30.02	06	BKN	040			9.00	83	77	79	82	3	26	29.92	30.03	06	SCT	250			10.00	77	74	75	91	0	00	29.93	30.03	09	BKN	250			9.00	85	75	78	72	7	25	29.96	30.06	09	SCT	026			10.00	87	74	78	65	9	15	29.94	30.04	12	BKN	250			10.00	91	71	77	52	8	24	29.95	30.05	12	SCT	250			10.00	94	70	77	46	9	13	29.92	30.03	15	BKN	250			10.00	95	67	76	40	3	27	29.88	29.99	15	BKN	250			10.00	93	73	79	52	18	12	29.88	29.98	18	BKN	250			10.00	90	74	79	59	14	14	29.87	29.97	18	BKN	250			10.00	92	70	77	49	11	17	29.87	29.97	21	BKN	250			10.00	85	73	77	67	10	18	29.89	30.00	21	SCT	250			10.00	85	73	77	67	9	16	29.91	30.02	24	BKN	250			10.00	83	74	77	74	9	18	29.92	30.02	24	SCT	250			10.00	82	75	77	79	5	19	29.93	30.03
SUNRISE: 0542						AUG 03						SUNRISE: 0545						AUG 09						SUNSET: 1909																																																																																																																																																																																																							
03	BKN	250			10.00	81	75	77	82	7	19	29.89	30.00	03	FEW	250			10.00	79	75	76	88	3	17	29.93	30.03	06	BKN	250			7.00	79	75	76	88	0	00	29.92	30.02	06	SCT	130			10.00	77	75	76	94	0	00	29.95	30.06	09	BKN	250			10.00	88	74	78	63	9	21	29.95	30.05	09	SCT	250			10.00	89	75	79	63	9	17	29.98	30.09	12	BKN	130			10.00	92	69	76	47	5	VR	29.93	30.04	12	BKN	250			10.00	92	69	76	47	5	VR	29.93	30.04	15	SCT	250			10.00	99	61	74	29	13	15	29.87	29.98	15	BKN	250			10.00	99	61	74	29	13	15	29.87	29.98	18	SCT	250			10.00	93	71	78	49	14	16	29.86	29.96	18	BKN	250			10.00	93	71	78	49	14	16	29.86	29.96	21	CLR	NC			10.00	84	75	78	74	14	17	29.90	30.01	21	SCT	250			10.00	84	75	78	74	14	17	29.90	30.01	24	FEW	020			10.00	82	76	78	82	5	17	29.91	30.01	24	SCT	250			10.00	82	76	78	82	5	17	29.91	30.01
SUNRISE: 0542						AUG 04						SUNRISE: 0546						AUG 10						SUNSET: 1908																																																																																																																																																																																																							
03	FEW	016			10.00	80	76	77	88	3	17	29.90	30.01	03	SCT	250			10.00	78	76	77	94	0	00	30.00	30.10	06	SCT	150			8.00	76	75	75	97	0	00	29.93	30.03	06	BKN	250			10.00	78	76	77	94	0	00	30.01	30.12	09	BKN	032			10.00	87	75	78	68	6	18	29.95	30.05	09	BKN	250			10.00	86	77	80	75	5	20	30.02	30.12	12	BKN	250			10.00	94	72	78	49	3	VR	29.93	30.03	12	BKN	250			10.00	94	74	80	52	6	VR	30.00	30.10	15	BKN	250			10.00	96	73	79	48	13	15	29.86	29.97	15	SCT	055			10.00	89	75	79	63	9	16	29.96	30.06	18	SCT	250			10.00	92	72	78	52	16	15	29.84	29.95	18	OVC	250			10.00	88	76	79	68	10	15	29.92	30.03	21	SCT	250			10.00	86	74	78	68	10	16	29.89	30.00	21	BKN	250			10.00	85	75	78	72	8	17	29.94	30.05	24	SCT	250			10.00	83	77	79	82	5	18	29.91	30.02	24	SCT	250			10.00	82	77	78	85	0	00	29.97	30.08
SUNRISE: 0543						AUG 05						SUNRISE: 0546						AUG 11						SUNSET: 1907																																																																																																																																																																																																							
03	FEW	250			10.00	80	77	78	91	3	18	29.90	30.00	03	BKN	250			10.00	80	77	78	91	0	00	29.94	30.05	06	BKN	022			10.00	78	77	77	97	0	00	29.92	30.02	06	SCT	250			10.00	77	76	76	97	0	00	29.97	30.08	09	SCT	022			10.00	87	74	78	65	5	VR	29.96	30.07	09	BKN	250			10.00	86	76	79	72	10	23	30.00	30.11	12	SCT	250			10.00	94	71	78	47	3	VR	29.94	30.05	12	SCT	250			10.00	93	71	78	49	0	00	29.97	30.08	15	SCT	250			10.00	98	68	77	38	5	12	29.87	29.97	15	SCT	250			10.00	99	68	77	38	5	12	29.87	29.97	18	SCT	250			10.00	95	73	79	49	9	11	29.83	29.94	18	BKN	250			10.00	95	73	79	49	9	11	29.83	29.94	21	SCT	250			10.00	88	72	77	59	7	16	29.88	29.98	21	SCT	250			10.00	88	72	77	59	7	16	29.88	29.98	24	SCT	250			10.00	84	74	77	72	7	19	29.90	30.00	24	BKN	250			10.00	84	74	77	72	7	19	29.90	30.00
SUNRISE: 0543						AUG 06						SUNRISE: 0547						AUG 12						SUNSET: 1906																																																																																																																																																																																																							
03	SCT	250			10.00	81	75	77	82	5	19	29.88	29.98	03	SCT	250			10.00	80	75	77	85	0	00	29.90	30.01	06	BKN	250			10.00	81	77	78	88	0	00	29.92	30.02	06	SCT	250			10.00	79	74	76	85	0	00	29.93	30.03	09	BKN	250			10.00	87	74	78	65	9	25	29.93	30.04	09	SCT	250			10.00	88	73	77	61	10	30	29.95	30.05	12	SCT	250			10.00	93	71	78	49	7	23	29.92	30.03	12	SCT	250			10.00	96	67	76	39	3	VR	29.92	30.03	15	SCT	250			10.00	99	70	78	39	7	10	29.85	29.95	15	SCT	250			10.00	97	67	76	38	6	14	29.83	29.94	18	BKN	250			10.00	96	71	78	44	10	13	29.81	29.92	18	BKN	130			10.00	84	74	77	72	11	34	29.85	29.96	21	BKN	250			10.00	88	73	77	61	7	18	29.86	29.96	21	BKN	250			10.00	81	74	76	79	3	22	29.89	30.00	24	BKN	250			10.00	84	75	78	74	3	19	29.89	29.99	24	BKN	250			10.00	84	75	78	74	3	19	29.89	29.99

OBSERVATIONS AT 3-HOURLY INTERVALS

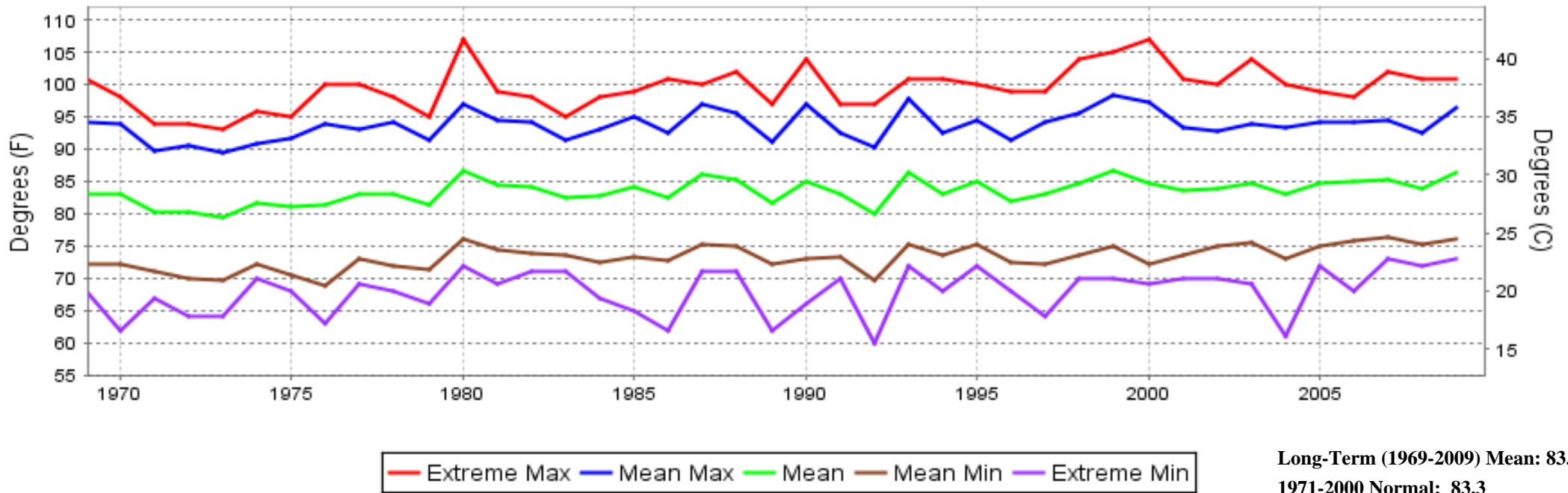
HOUSTON, TX
AUGUST 2009

KIAH

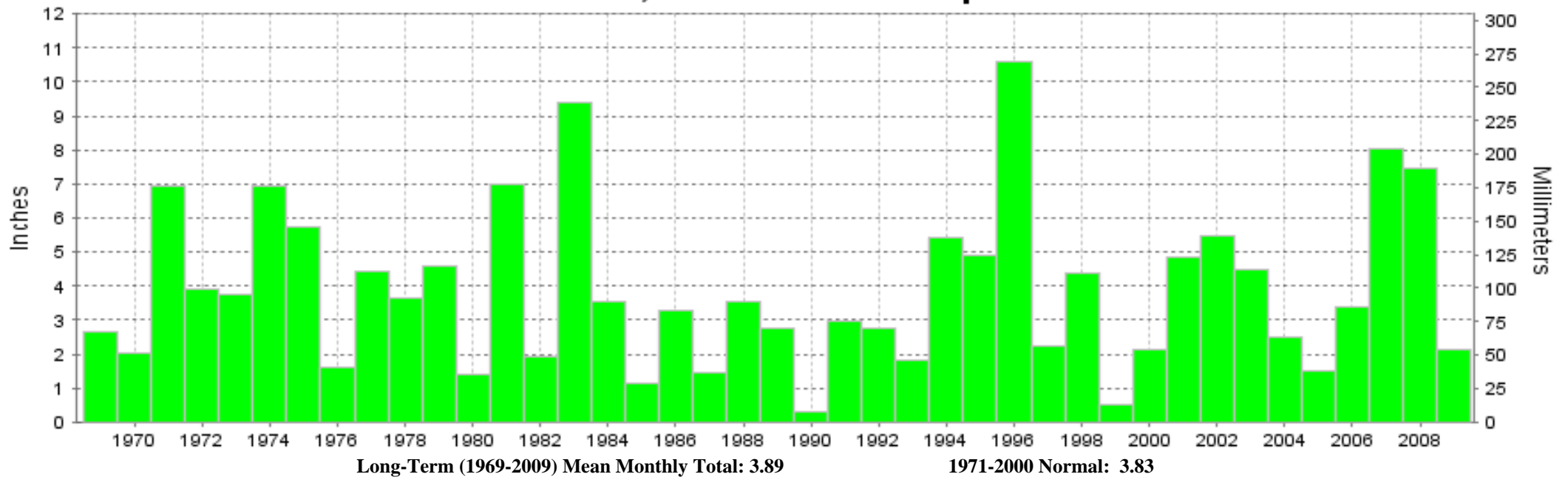
WBAN # 12960

HOUR (LST)	SKY COVER	CEILING 100's of FT.	SATELLITE		WEATHER	TEMPERATURE °F			WIND SPEED (MPH) DIRECTION Tens of Deg	PRESSURE (INCHES, HG)		HOUR (LST)	SKY COVER	CEILING 100's of FT.	SATELLITE		WEATHER	TEMPERATURE °F			WIND SPEED (MPH) DIRECTION Tens of Deg	PRESSURE (INCHES, HG)					
			Observation Time (LST)	Eff Cld Amt Oktas		VISIBILITY (MILES)	DRY BULB	DEW POINT		WET BULB	RELATIVE HUMIDITY (PCT)				STATION	SEA LEVEL		Observation Time (LST)	Eff Cld Amt Oktas	VISIBILITY (MILES)		DRY BULB	DEW POINT	WET BULB	RELATIVE HUMIDITY (PCT)	STATION	SEA LEVEL
SUNRISE: 0547						AUG 13						SUNSET: 1906															
03	BKN	250			10.00	77	72	74	85	0	00	29.87	29.97	03	SCT	130			10.00	77	75	76	94	3	18	29.83	29.93
06	BKN	250			10.00	76	73	74	90	0	00	29.89	29.99	06	SCT	250			10.00	76	75	75	97	3	03	29.84	29.95
09	SCT	250			10.00	84	74	77	72	0	00	29.91	30.01	09	BKN	250			10.00	87	74	78	65	6	21	29.85	29.96
12	BKN	250			10.00	95	73	79	49	0	00	29.89	30.00	12	OVC	250			10.00	94	71	78	47	5	15	29.82	29.92
15	BKN	090			10.00	87	69	75	55	15	01	29.85	29.95	15	SCT	070			10.00	87	75	78	68	14	13	29.77	29.87
18	BKN	250			10.00	80	72	75	77	5	17	29.84	29.95	18	BKN	130			10.00	83	77	79	82	8	12	29.76	29.87
21	BKN	250			10.00	77	74	75	91	3	17	29.86	29.97	21	BKN	250			10.00	82	76	78	82	9	15	29.78	29.89
24	BKN	250			10.00	75	74	74	97	0	00	29.87	29.98	24	BKN	250			10.00	82	76	78	82	6	17	29.77	29.88
SUNRISE: 0548						AUG 14						SUNSET: 1905															
03	SCT	250			8.00	75	74	74	97	3	01	29.88	29.98	03	BKN	250			10.00	81	75	77	82	5	18	29.76	29.86
06	BKN	250			7.00	75	73	74	94	5	03	29.90	30.00	06	SCT	250			10.00	78	76	77	94	0	00	29.78	29.89
09	SCT	250			10.00	85	78	80	80	3	19	29.91	30.02	09	SCT	250			10.00	88	75	79	65	11	19	29.81	29.92
12	BKN	250			10.00	92	71	77	50	0	00	29.90	30.00	12	BKN	250			10.00	92	73	78	54	3	VR	29.80	29.91
15	SCT	250			10.00	96	68	77	40	7	14	29.84	29.94	15	SCT	250			10.00	99	70	78	39	3	VR	29.74	29.84
18	BKN	250			10.00	90	71	77	54	13	13	29.83	29.93	18	SCT	032			10.00	86	78	80	77	13	11	29.76	29.86
21	FEW	250			10.00	83	70	74	65	8	15	29.84	29.94	21	SCT	250			10.00	86	76	79	72	11	17	29.81	29.91
24	FEW	250			10.00	79	73	75	82	3	21	29.87	29.97	24	SCT	250			10.00	84	77	79	80	3	19	29.83	29.93
SUNRISE: 0549						AUG 15						SUNSET: 1904															
03	FEW	250			10.00	76	73	74	90	0	00	29.84	29.94	03	SCT	250			10.00	80	78	79	94	3	18	29.85	29.95
06	SCT	250			9.00	76	74	75	94	0	00	29.85	29.95	06	BKN	250			10.00	80	78	79	94	0	00	29.88	29.98
09	SCT	250			10.00	87	75	78	68	3	14	29.88	29.99	09	BKN	250			10.00	88	76	79	68	8	25	29.91	30.01
12	SCT	250			10.00	92	72	78	52	0	00	29.85	29.96	12	BKN	250			10.00	94	72	78	49	7	VR	29.86	29.96
15	SCT	250			10.00	95	70	77	44	8	12	29.79	29.89	15	BKN	250			10.00	98	71	79	42	6	VR	29.78	29.89
18	SCT	250			10.00	90	71	77	54	15	12	29.79	29.89	18	OVC	060		TS+RA BR	2.00	74	71	72	90	22	17	29.82	29.92
21	SCT	250			10.00	82	72	75	72	6	16	29.82	29.92	21	OVC	250			10.00	75	74	74	97	0	00	29.88	29.99
24	FEW	250			10.00	78	73	75	85	0	00	29.84	29.94	24	BKN	250			10.00	76	74	75	94	0	00	29.90	30.01
SUNRISE: 0549						AUG 16						SUNSET: 1903															
03	SCT	250			10.00	76	73	74	90	0	00	29.82	29.92	03	SCT	250			10.00	75	71	72	87	3	34	29.88	29.98
06	SCT	250			10.00	75	73	74	94	0	00	29.84	29.95	06	SCT	250			10.00	75	72	73	90	0	00	29.90	30.01
09					10.00	87	75	78	68	8	12	29.87	29.98	09	SCT	250			10.00	84	73	76	70	7	VR	29.92	30.03
12	BKN	250			10.00	92	69	76	47	3	VR	29.85	29.95	12	SCT	250			10.00	93	70	77	47	5	34	29.90	30.01
15	BKN	250			10.00	95	70	77	44	11	14	29.78	29.89	15	SCT	060			10.00	97	70	78	42	0	00	29.83	29.94
18	SCT	250			10.00	90	72	77	56	15	12	29.79	29.89	18	SCT	250			10.00	89	70	76	54	16	11	29.82	29.92
21	SCT	250			10.00	84	73	76	70	9	14	29.83	29.94	21	SCT	250			10.00	83	76	78	80	3	17	29.85	29.96
24	SCT	250			10.00	82	75	77	79	6	19	29.86	29.96	24	SCT	250			10.00	83	76	78	80	5	19	29.86	29.96
SUNRISE: 0550						AUG 17						SUNSET: 1902															
03	FEW	250			10.00	78	75	76	91	0	00	29.85	29.95	03	SCT	250			10.00	78	75	76	91	0	00	29.86	29.96
06	SCT	250			10.00	76	74	75	94	3	10	29.86	29.97	06	SCT	250			10.00	76	75	75	97	5	05	29.88	29.98
09	SCT	250			10.00	89	72	77	57	6	18	29.91	30.01	09	BKN	025			10.00	85	77	79	77	5	35	29.91	30.01
12	BKN	250			10.00	93	71	78	49	5	24	29.90	30.00	12	SCT	060			10.00	91	72	78	54	5	11	29.89	29.99
15	BKN	110			10.00	89	72	77	57	18	17	29.85	29.96	15	BKN	250			10.00	95	75	80	53	11	14	29.83	29.93
18	BKN	250			10.00	91	71	77	52	8	18	29.84	29.94	18	BKN	250			10.00	90	74	79	59	8	15	29.82	29.93
21	FEW	250			10.00	85	74	77	70	5	16	29.88	29.98	21	BKN	250			10.00	85	75	78	72	8	16	29.85	29.95
24	SCT	250			10.00	80	76	77	88	0	00	29.89	29.99	24	BKN	250			10.00	83	76	78	80	3	18	29.87	29.97
SUNRISE: 0550						AUG 18						SUNSET: 1901															
03	SCT	250			10.00	78	75	76	91	0	00	29.88	29.98	03	BKN	250			10.00	80	76	77	88	3	11	29.87	29.98
06	SCT	250			10.00	76	75	75	97	0	00	29.89	30.00	06	BKN	250			10.00	78	76	77	94	0	00	29.89	29.99
09	SCT	250			10.00	87	75	78	68	5	13	29.92	30.02	09	BKN	250			10.00	87	77	80	72	0	00	29.92	30.03
12	SCT	050			10.00	90	74	79	59	7	17	29.89	30.00	12	SCT	250			10.00	93	72	78	51	6	20	29.91	30.01
15	BKN	130			10.00	90	74	79	59	8	13	29.87	29.98	15	BKN	250			10.00	86	72	76	63	20	11	29.87	29.98
18	BKN	140			10.00	84	75	78	74	13	12	29.85	29.96	18	BKN	250			10.00	81	73	75	77	7	14	29.87	29.98
21	SCT	250			10.00	78	74	75	88	8	12	29.85	29.96	21	BKN	250			10.00	79	76	77	91	5	14	29.90	30.00
24	SCT	250			10.00	76	75	75	97	5	11	29.86	29.96	24	SCT	250			10.00	78	75	76	91	0	00	29.89	30.00

HOUSTON, TX AUGUST Temperatures



HOUSTON, TX AUGUST Precipitation





**AUGUST 2009
HOUSTON, TX**

LOCAL CLIMATOLOGICAL DATA

NOAA, National Climatic Data Center

I certify that this is an official publication of the National Oceanic and Atmospheric Administration (NOAA). It is compiled using information from weather observing sites operated by NOAA-National Weather Service / Department Of Transportation-Federal Aviation Administration and received at the National Climatic Data Center (NCDC), Asheville, North Carolina 28801.

DIRECTOR

NCDC now offers an annual online subscription for the **Edited Local Climatological Data Publication**. When you purchase this subscription service, you will have **immediate online access** to all previous publications back to July 1996 and all publications thereafter until the expiration of the subscription. Your subscription is valid for one year after purchase. **The total cost for online delivery (including back issues) is significantly less than the cost for offline delivery.**

To order this and other subscriptions online with your credit card, go to: **www.ncdc.noaa.gov** and choose subscriptions.

We welcome your questions or comments, please contact us at:

Toll Free Number (866) 742-3322 (voice)

Fax Number : (304) 726-4409

TDD : (828) 271-4010

or Email : ncdc.info@noaa.gov

Local Climatological Data is available at www.ncdc.noaa.gov

NCDC Subscription Services Center
310 State Route 956 Building 300
Rocket Center, WV 26726
OFFICIAL BUSINESS, PENALTY FOR PRIVATE USE \$300

FIRST CLASS
POSTAGE AND FEES PAID
NOAA
PERMIT G-19

For address correction, please return a photocopy of this page to Subscription Services indicating changes