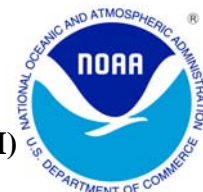




# AUGUST 2010 LOCAL CLIMATOLOGICAL DATA

NOAA, National Climatic Data Center

HOUSTON, TX  
G BUSH INTERCONTINENTAL AP/HOUSTON AP (KIAH)  
Lat:29° 59'N Long: 95° 21'W Elev (Ground) 94 Feet  
Time Zone : CENTRAL WBAN: 12960 ISSN#: 0198-5094



Date 1	Temperature °F						Deg Days BASE 65°		WEATHER 10	SNOW/ICE ON GND(IN)		PRECIPITATION ON GND(IN)		PRESSURE (INCHES OF HG)		WIND SPEED = MPH DIR = TENS OF DEGREES								Date 24
	MAXIMUM 2	MINIMUM 3	AVERAGE 4	DEP FROM NORMAL 5	AVERAGE DEW PT 6	AVERAGE WET BULB 7	HEATING 8	COOLING 9		0600 LST 11	1200 LST 12	2400 LST 13	2400 LST 14	AVERAGE STATION 15	AVERAGE SEA LEVEL 16	RESULTANT SPEED 17	RES DIR 18	AVERAGE SPEED 19	MAXIMUM					
																			3-SEC		2-MIN			
01	99	76	88	4	71	76	0	23		0		0.0	0.00	29.78	29.89	2.6	22	4.1	17	04	12	13	01	
02	98	76	87	3	71	76	0	22		0		0.0	0.00	29.85	29.96	2.9	14	4.3	20	11	14	11	02	
03	97	77	87	3	76	79	0	22		0		0.0	0.00	29.90	30.00	3.2	15	3.9	17	15	14	15	03	
04	98	80	89	5	75	79	0	24		0		0.0	0.00	29.84	29.96	2.4	18	3.4	17	16	14	14	04	
05	95	81	88	4	76	79	0	23		0		0.0	0.00	29.78	29.90	3.2	19	4.9	31	25	15	15	05	
06	97	79	88	4	75	78	0	23		0		0.0	0.00	29.78	29.89	3.6	18	5.6	23	14	16	14	06	
07	98	81	90	6	75	79	0	25		0		0.0	0.00	29.78	29.89	3.1	19	4.7	21	17	17	16	07	
08	98	77	88	4	75	78	0	23	TS TSRA RA	0		0.0	T	29.78	29.90	3.7	17	5.2	22	14	17	12	08	
09	98	76	87	3	75	79	0	22		0		0.0	0.00	29.81	29.93	3.1	16	4.5	23	14	20	13	09	
10	99	77	88	4	75	79	0	23		0		0.0	0.00	29.80	29.91	1.5	16	3.1	15	14	13	14	10	
11	99	79	89	5	73	78	0	24		0		0.0	0.00	29.75	29.87	2.6	17	4.1	15	11	10	19	11	
12	96	83	90	6	75	79	0	25		0		0.0	0.00	29.72	29.83	3.2	20	3.8	13	19	10	18	12	
13	98	78	88	4	74	78	0	23		0		0.0	0.00	29.72	29.82	3.8	21	5.1	18	19	13	18	13	
14	99	79	89	5	76	80	0	24	RA	0		0.0	T	29.80	29.89	4.4	19	5.6	15	18	12	14	14	
15	100	80	90	6	76	80	0	25		0		0.0	0.00	29.83	29.94	2.6	20	3.4	15	15	13	15	15	
16	101	77	89	6	76	79	0	24	TS TSRA RA BR	0		0.0	0.32	29.80	29.92	2.4	29	6.1	43*	06	36*	07	16	
17	98	78	88	5	76	79	0	23	BR	0		0.0	0.00	29.77	29.88	0.8	25	3.4	10	20	8	20	17	
18	97	83	90	7	76	79	0	25		0		0.0	0.00	29.80	29.92	4.1	22	5.7	18	16	15	16	18	
19	95	79	87	4	75	78	0	22	RA	0		0.0	T	29.78	29.90	3.6	20	5.0	21	17	14	23	19	
20	96	78	87	4	76	79	0	22	RA	0		0.0	T	29.77	29.88	5.9	18	6.8	23	22	16	22	20	
21	98	78	88	5	75	78	0	23		0		0.0	0.00	29.85	29.95	5.2	20	5.8	20	20	14	21	21	
22	99	79	89	6	73	78	0	24		0		0.0	0.00	29.83	29.95	4.3	24	4.6	21	24	15	24	22	
23	102*	79	91*	8	73	77	0	26		0		0.0	0.00	29.75	29.87	3.8	25	5.5	23	30	18	28	23	
24	99	76	88	5	72	77	0	23	RA	0		0.0	T	29.75	29.85	0.8	35	3.1	23	36	20	36	24	
25	99	74	87	5	67	73	0	22		0		0.0	0.00	29.85	29.94	7.4	03	7.8	29	01	20	05	25	
26	98	76	87	5	64	71	0	22		0		0.0	0.00	29.88		7.2	04	7.6	24	06	20	06	26	
27	97	72*	85	3	61	69	0	20		0		0.0	0.00	29.80	29.92	3.4	05	4.8	29	02	17	01	27	
28	97	73	85	3	70	75	0	20		0		0.0	0.00	29.74	29.86	3.6	07	6.2	21	06	15	10	28	
29	97	77	87	5	74	77	0	22	RA	0		0.0	0.01	29.80	29.90	5.3	13	6.9	24	13	22	14	29	
30	92	79	86	4	77	79	0	21	TS TSRA RA BR	0		0.0	0.02	29.91	30.00	7.4	12	7.9	23	15	20	15	30	
31	91	78	85*	3	77	79	0	20	TS TSRA RA BR	0		0.0	0.67	29.87	29.99	4.4	11	4.9	22	09	17	09	31	

97.6			77.9			87.8			☼	73.5			77.5			0.0		22.9		< MONTHLY AVERAGES   TOTALS >				0.0		1.02		29.80		29.91		1.8		17		5.1		< MONTHLY AVERAGES			
4.1			4.9			4.5				<-----DEPARTURE FROM NORMAL----->												-2.81		SUNSHINE, CLOUD, & VISIBILITY TABLES ON PAGE 3																	
<b>DEGREE DAYS</b>										GREATEST 24-HR PRECIPITATION : 0.67 DATE : 31										SEA LEVEL PRESSURE				DATE TIME																	
MONTHLY					SEASON TO DATE					GREATEST 24-HR SNOWFALL : 0.0 DATE :					MAXIMUM : 30.06				30 1153																						
TOTAL DEPARTURE					TOTAL DEPARTURE					GREATEST SNOW DEPTH : 0 DATE :					MINIMUM : 29.78				13 1853																						
HEATING :		0		0		0		0		NUMBER OF		MAXIMUM TEMP >= 90 :		31		MINIMUM TEMP <= 32 :		0		PRECIPITATION >= 0.01 INCH :		4																			
COOLING :		710		147		2554		359		->		MAXIMUM TEMP <= 32 :		0		MINIMUM TEMP <= 0 :		0		PRECIPITATION >= 0.10 INCH :		2																			
										DAYS WITH		THUNDERSTORMS :		4		HEAVY FOG		:		SNOWFALL >= 1.0 INCH :		0																			

AUGUST 2010  
HOUSTON, TX

# HOURLY PRECIPITATION

(WATER EQUIVALENT IN INCHES)

HOUSTON, TX (KIAH)  
AUGUST 2010

WBAN # 12960

Date	FOR HOUR (LST) ENDING AT												Date	FOR HOUR (LST) ENDING AT												Date	Sum of Hourly Data	2400 LST Water Equiv.
	1	2	3	4	5	6	7	8	9	10	11	12		13	14	15	16	17	18	19	20	21	22	23	24			
01													01												01	0.00	0.00	
02													02												02	0.00	0.00	
03													03												03	0.00	0.00	
04													04												04	0.00	0.00	
05													05												05	0.00	0.00	
06													06												06	0.00	0.00	
07													07												07	0.00	0.00	
08													08			T	T								08	T	T	
09													09												09	0.00	0.00	
10													10												10	0.00	0.00	
11													11												11	0.00	0.00	
12													12												12	0.00	0.00	
13													13												13	0.00	0.00	
14												T	14	T										14	T	T		
15													15											15	0.00	0.00		
16													16			T	0.29	0.03	T	T				16	0.32	0.32		
17													17											17	0.00	0.00		
18													18											18	0.00	0.00		
19													19	T										19	T	T		
20													20		T									20	T	T		
21													21											21	0.00	0.00		
22													22											22	0.00	0.00		
23													23											23	0.00	0.00		
24											T		24			T	T							24	T	T		
25													25											25	0.00	0.00		
26													26											26	0.00	0.00		
27													27											27	0.00	0.00		
28													28											28	0.00	0.00		
29													29											29	0.01	0.01		
30												T	30			T		0.01						30	0.02	0.02		
31	T	T										0.02	31	0.01	0.01									31	0.67	0.67		

\* Indicates sum of Hourly and Daily disagree.

### MAXIMUM SHORT DURATION PRECIPITATION (See Note)

Time Period (Minutes)	5	10	15	20	30	45	60	80	100	120	150	180
Precipitation (Inches)	0.24	0.42	0.49	0.59	0.64	0.65	0.66	0.66	0.66	0.66	0.67	0.67
Ending Date	31	31	31	31	31	31	31	31	31	31	31	31
Ending Time (Hr/Min)	1131	1134	1139	1143	1145	1149	1204	1204	1204	1204	1323	1323

Note : The hourly and daily precipitation totals are printed in the last 2 columns and hi-lighted in red when they disagree. NWS does not edit ASOS hourly values but may edit daily and monthly totals. Hourly, daily, and monthly totals are printed as reported by the ASOS site.

Date and time are not entered for TRACE amounts.

# REFERENCE NOTES & SUPPLEMENTAL SUMMARIES

\* = Extreme for the month (last occurrence if more than one).

T = Trace precipitation amount.

+ = also occurs on earlier date.

FG+ = Heavy fog, visibility .25 miles or less.

BLANK entries denote missing or unreported data.

Resultant wind is the vector sum of the wind speeds and directions divided by the number of observations.

Wind direction is recorded in tens of degrees (2 digits) clockwise from true north. '00' = calm, 'VR' = variable.

Precipitation is for the 24-hour period ending at the time indicated in the column heading.

Water Equivalent of snow on the ground is reported only when the depth is 2 or more inches.

NORMALS ARE FOR THE YEARS 1971-2000

## WEATHER NOTATIONS

QUALIFIER	WEATHER PHENOMENA		
DESCRIPTOR	PRECIPITATION	OBSCURATION	OTHER
BC Patches	DZ Drizzle	BR Mist	DS Duststorm
BL Blowing	GR Hail	DU Widespread Dust	FC Funnel Cloud
DR Low Drifting	GS Small Hail and/or Snow Pellets	FG Fog	+FC Tornado Waterspout
FZ Freezing	IC Ice Crystals	FU Smoke	PO Well-Developed Dust/Sand Whirls
MI Shallow	PL Ice Pellets	HZ Haze	
PR Partial	RA Rain	PY Spray	SQ Squalls
SH Shower(s)	SG Snow Grains	SA Sand	SS Sandstorm
TS Thunderstorm	SN Snow	VA Volcanic Ash	GL Glaze
VC In the Vicinity	UP Unkown Precipitation		

Intensity (as indicated on pages 4 to 6):  
'+' = Heavy    '' = Moderate    '-' = Light

# HOUSTON, TX AUGUST 2010

Ceilometer (30-second) data are used to derive cloudiness at or below 12,000 feet. This cloudiness is the mean cloud cover detected during sunrise to sunset (SR-SS), or midnight to midnight (MN-MN).

Satellite data are used to derive cloudiness above 12,000 feet. Effective Cloud Amount is based on the cloud cover and the transparency of the clouds within the satellite field of view (approx. 31x31 miles).

Sky Condition is based on the sum (not to exceed 8) of the sunrise to sunset cloud cover below and above 12,000 feet. Both ceilometer and satellite data must be present to compute Sky Condition. Clear = 0-2 oktas, Partly Cloudy = 3-6 oktas, Cloudy = 7-8 oktas.

A Heating (Cooling) Degree Day is the difference between the average daily temperature and 65 degrees F. The HDD season begins July 1, the CDD season begins January 1.

Dew Point is the temperature to which the air must be cooled to achieve 100% relative humidity. Wet Bulb is the temperature the air would have if cooled to saturation at constant pressure by evaporation of water into it.

Snow Depth, Snowfall, and Sunshine data may come from nearby sites that the National Weather Service deems Climatologically representative of this site.

## ADDITIONAL NOTES:

Date	SUNSHINE		CLOUDINESS (OKTAS)				VISIBILITY (MILES)		RESERVED
	TOTAL MINUTES	PERCENT POSSIBLE	SR-SS		MN-MN		MINIMUM	MAXIMUM	
			Sky Cover	Satellite	Sky Cover	Satellite			
01							10.00	10.00	
02							10.00	10.00	
03							10.00	10.00	
04							8.00	10.00	
05							10.00	10.00	
06							10.00	10.00	
07							10.00	10.00	
08							10.00	10.00	
09							10.00	10.00	
10							10.00	10.00	
11							10.00	10.00	
12							8.00	10.00	
13							10.00	10.00	
14							10.00	10.00	
15							10.00	10.00	
16							6.00	10.00	
17							5.00	10.00	
18							7.00	10.00	
19							10.00	10.00	
20							10.00	10.00	
21							10.00	10.00	
22							10.00	10.00	
23							10.00	10.00	
24							10.00	10.00	
25							8.00	10.00	
26							8.00	10.00	
27							10.00	10.00	
28							10.00	10.00	
29							10.00	10.00	
30							4.00	10.00	
31							7.00	10.00	
MONTHLY AVGS							9.06	10.00	
<b>SUNSHINE (Minutes)</b>									
Total : 0					Possible : 24560				
Percent Possible : 0									
<b>NUMBER OF DAYS WITH : SKY CONDITION</b>									
Clear		Partly CLDY			Cloudy			Missing	
<b>MINIMUM VISIBILITY (MILES)</b>									
<= .25			<= 3.0				>= 7.0		
0			0				28		

# OBSERVATIONS AT 3-HOURLY INTERVALS

**HOUSTON, TX**  
AUGUST 2010

KIAH

WBAN # 12960

HOUR (LST)	SKY COVER	CEILING 100's of FT.	SATELLITE		VISIBILITY (MILES)	WEATHER	TEMPERATURE °F			WIND SPEED (MPH) DIRECTION Tens of Deg	PRESSURE (INCHES, HG)		HOUR (LST)	SKY COVER	CEILING 100's of FT.	SATELLITE		VISIBILITY (MILES)	WEATHER	TEMPERATURE °F			WIND SPEED (MPH) DIRECTION Tens of Deg	PRESSURE (INCHES, HG)					
			Observation Time (LST)	Eff Cld Amt Oktas			DRY BULB	DEW POINT	WET BULB		RELATIVE HUMIDITY (PCT)	STATION				SEA LEVEL	Observation Time (LST)			Eff Cld Amt Oktas	DRY BULB	DEW POINT		WET BULB	RELATIVE HUMIDITY (PCT)	STATION	SEA LEVEL		
			<b>SUNRISE: 0540</b>								<b>AUG 01</b>									<b>SUNSET: 1915</b>									
03	CLR	NC			10.00		79	74	76	85	3	24	29.77	29.88	03	SCT	250			10.00		82	76	78	82	0	00	29.77	29.87
06	FEW	130			10.00		76	74	75	94	3	28	29.79	29.90	06	BKN	250			10.00		82	76	78	82	0	00	29.80	29.90
09	CLR	NC			10.00		86	72	76	63	8	28	29.82	29.92	09	BKN	250			10.00		88	77	80	70	5	28	29.82	29.92
12	FEW	250			10.00		94	70	77	46	0	00	29.80	29.91	12	SCT	250			10.00		92	75	80	58	6	31	29.80	29.91
15	SCT	250			10.00		97	64	75	34	0	00	29.77	29.87	15	SCT	250			10.00		94	75	80	54	13	15	29.75	29.85
18	SCT	250			10.00		95	69	77	43	10	13	29.74	29.84	18	SCT	250			10.00		91	75	79	60	7	19	29.74	29.84
21	FEW	250			10.00		88	71	76	57	5	21	29.78	29.89	21	SCT	250			10.00		86	74	78	68	5	17	29.78	29.88
24	CLR	NC			10.00		83	73	76	72	3	22	29.80	29.90	24	CLR	NC			10.00		84	76	78	77	3	19	29.80	29.91
<b>SUNRISE: 0541</b>							<b>AUG 02</b>							<b>SUNSET: 1915</b>															
03	CLR	NC			10.00		80	71	74	74	0	00	29.82	29.93	03	FEW	250			10.00		82	76	78	82	0	00	29.79	29.89
06	FEW	250			10.00		77	72	74	85	0	00	29.86	29.96	06	FEW	250			10.00		77	75	76	94	0	00	29.80	29.91
09	CLR	NC			10.00		87	72	77	61	5	VR	29.88	29.98	09	SCT	024			10.00		87	76	79	70	5	VR	29.83	29.94
12	CLR	NC			10.00		95	70	77	44	5	15	29.87	29.97	12	SCT	043			10.00		93	73			7	VR		
15	CLR	NC			10.00		97	70	78	42	9	13	29.83	29.94	15	BKN	250			10.00	-RA	93	74	79	54	6	24	29.77	29.88
18	FEW	060			10.00		93	68	76	44	11	12	29.83	29.94	18	SCT	250			10.00		90	75	79	61	9	13	29.75	29.85
21	FEW	250			10.00		87	74	78	65	6	19	29.88	29.98	21	SCT	250			10.00		86	76	79	72	8	17	29.80	29.91
24	CLR	NC			10.00		83	75	77	77	3	20	29.89	29.99	24	CLR	NC			10.00		83	75	77	77	3	20	29.81	29.92
<b>SUNRISE: 0542</b>							<b>AUG 03</b>							<b>SUNSET: 1914</b>															
03	CLR	NC			10.00		80	75	77	85	0	00	29.89	30.00	03	FEW	250			10.00		80	76	77	88	0	00	29.80	29.91
06	FEW	250			10.00		78	76	77	94	0	00	29.92	30.02	06	SCT	250			10.00		77	75	76	94	0	00	29.83	29.93
09	SCT	250			10.00		88	76	79	68	3	VR	29.95	30.05	09	BKN	250			10.00		87	77	80	72	6	27	29.87	29.97
12	SCT	250			10.00		94	73	79	51	6	16	29.94	30.04	12	BKN	040			10.00		93	74	79	54	3	28	29.85	29.95
15	OVC	250			10.00		95	76	81	54	10	15	29.89	29.99	15	SCT	055			10.00		97	72	79	45	8	11	29.79	29.90
18	OVC	250			10.00		91	77	81	64	11	13	29.86	29.96	18	SCT	250			10.00		91	77	81	64	18	13	29.77	29.88
21	BKN	250			10.00		87	77	80	72	5	18	29.89	29.99	21	CLR	NC			10.00		86	74	78	68	6	18	29.83	29.93
24	BKN	250			10.00		84	78	80	82	3	20	29.89	29.99	24	FEW	250			10.00		83	76	78	80	0	00	29.82	29.93
<b>SUNRISE: 0542</b>							<b>AUG 04</b>							<b>SUNSET: 1913</b>															
03	BKN	250			10.00		82	78	79	88	0	00	29.87	29.97	03	FEW	250			10.00		78	76	77	94	0	00	29.80	29.91
06	BKN	250			8.00		80	78	79	94	0	00	29.89	29.99	06	SCT	250			10.00		78	76	77	94	0	00	29.82	29.93
09	BKN	250			10.00		88	76	79	68	3	VR	29.93	30.03	09	BKN	018			10.00		88	77	80	70	0	00	29.86	29.97
12	BKN	250			10.00		93	73	79	52	7	VR	29.90	30.00	12	SCT	250			10.00		95	74	80	51	0	00	29.85	29.96
15	BKN	250			10.00		96	73	79	48	5	23	29.83	29.93	15	BKN	250			10.00		98	72	79	43	7	VR	29.78	29.88
18	BKN	250			10.00		95	74	80	51	3	20	29.78	29.89	18	BKN	250			10.00		96	73	79	48	6	13	29.74	29.85
21	BKN	250			10.00		89	76	80	66	6	19	29.81	29.92	21	BKN	250			10.00		88	73	77	61	5	20	29.79	29.90
24	SCT	250			10.00		85	76	79	75	0	00	29.83	29.94	24	BKN	250			10.00		84	77	79	80	3	15	29.80	29.90
<b>SUNRISE: 0543</b>							<b>AUG 05</b>							<b>SUNSET: 1912</b>															
03	FEW	250			10.00		82	76	78	82	3	24	29.82	29.92	03	BKN	250			10.00		81	77	78	88	0	00	29.78	29.88
06	SCT	250			10.00		81	76	77	85	0	00	29.82	29.93	06	SCT	250			10.00		80	77	78	91	0	00	29.80	29.90
09	SCT	250			10.00		87	76	79	70	7	26	29.84	29.95	09	SCT	250			10.00		89	76	80	66	5	25	29.82	29.93
12	OVC	250			10.00		93	73	79	52	0	00	29.82	29.93	12	SCT	250			10.00		96	69	77	42	9	09	29.80	29.90
15	OVC	250			10.00		95	75	80	53	7	13	29.77	29.87	15	BKN	250			10.00		98	68	77	38	6	13	29.74	29.84
18	OVC	250			10.00		90	78	81	68	11	12	29.75	29.85	18	OVC	250			10.00		94	72	78	49	3	20	29.70	29.80
21	BKN	250			10.00		87	76	79	70	7	17	29.76	29.86	21	OVC	200			10.00		90	72	77	56	6	19	29.74	29.84
24	BKN	250			10.00		85	75	78	72	3	19	29.77	29.88	24	BKN	200			10.00		87	74	78	65	3	19	29.74	29.85
<b>SUNRISE: 0543</b>							<b>AUG 06</b>							<b>SUNSET: 1912</b>															
03	SCT	250			10.00		82	75	77	79	3	20	29.76	29.87	03	BKN	250			10.00		85	75	78	72	5	24	29.73	29.84
06	BKN	250			10.00		81	76	77	85	0	00	29.80	29.91	06	BKN	250			8.00		83	76	78	80	0	00	29.75	29.85
09	BKN	250			10.00		87	76	79	70	9	26	29.84	29.94	09	BKN	250			10.00		88	76	79	68	5	26	29.78	29.88
12	BKN	250			10.00		93	72	78	51	6	VR	29.82	29.92	12	OVC	250			10.00		93	74	79	54	0	00	29.76	29.87
15	BKN	250			10.00		95	72	79	47	0	00	29.75	29.86	15	OVC	250			10.00		88	77	80	70	7	18	29.72	29.82
18	BKN	250			10.00		91	77	81	64	11	12	29.75	29.85	18	BKN	250			10.00		90	75	79	61	6	18	29.67	29.78
21	BKN	250			10.00		87	75	78	68	6	17	29.78	29.89	21	BKN	250			10.00		86	74	78	68	5	19	29.70	29.80
24	SCT	250			10.00		84	74	77	72	3	19	29.77	29.88	24	BKN	250			10.00		83	75	77	77	3	20	29.71	29.81

# OBSERVATIONS AT 3-HOURLY INTERVALS

**HOUSTON, TX**  
AUGUST 2010

KIAH

WBAN # 12960

HOUR (LST)	SKY COVER	CEILING 100's of FT.	SATELLITE		WEATHER	TEMPERATURE °F			WIND SPEED (MPH) DIRECTION Tens of Deg	PRESSURE (INCHES, HG)		HOUR (LST)	SKY COVER	CEILING 100's of FT.	SATELLITE		WEATHER	TEMPERATURE °F			WIND SPEED (MPH) DIRECTION Tens of Deg	PRESSURE (INCHES, HG)					
			Observation Time (LST)	Eff Cld Amt Oktas		VISIBILITY (MILES)	DRY BULB	DEW POINT		WET BULB	RELATIVE HUMIDITY (PCT)				STATION	SEA LEVEL		Observation Time (LST)	Eff Cld Amt Oktas	VISIBILITY (MILES)		DRY BULB	DEW POINT	WET BULB	RELATIVE HUMIDITY (PCT)	STATION	SEA LEVEL
<b>SUNRISE: 0547</b>						<b>AUG 13</b>						<b>SUNSET: 1906</b>															
03	SCT	250				81	75	77	82	0	00	29.71	29.81	03	BKN	250				82	76	78	82	0	00	29.79	29.89
06	SCT	250				79	75	76	88	0	00	29.74	29.85	06	BKN	250				79	76	77	91	0	00	29.82	29.92
09	FEW	021				88	76	79	68	9	27	29.76	29.86	09	BKN	250				87	77	80	72	7	VR	29.85	29.96
12	SCT	250				94	72	78	49	8	25	29.73	29.84	12	BKN	250				95	75	80	53	6	28	29.82	29.93
15	SCT	250				96	71	78	44	7	21	29.69	29.80	15	BKN	130				93	74	79	54	7	20	29.78	29.88
18	BKN	250				92	72	78	52	8	19	29.68	29.78	18	BKN	250				87	72	77	61	7	18	29.76	29.86
21	SCT	250				87	76	79	70	7	19	29.70	29.81	21	BKN	200				83	74	77	74	5	18	29.78	29.88
24	SCT	250				84	76	78	77	9	19	29.73	29.83	24	BKN	250				82	76	78	82	6	17	29.78	29.88
<b>SUNRISE: 0548</b>						<b>AUG 14</b>						<b>SUNSET: 1905</b>															
03	FEW	250				82	77	78	85	3	19	29.76	29.86	03	BKN	250				82	78	79	88	5	19	29.76	29.86
06	SCT	250				79	76	77	91	0	00	29.79	29.89	06	BKN	250				83	77	79	82	8	20	29.77	29.88
09	BKN	032				88	78	81	72	5	25	29.82	29.92	09	BKN	150				88	77	80	70	9	19	29.83	29.93
12	BKN	065			RA	85	76	79	75	7	19	29.82	29.92	12	BKN	150				94	75	80	54	9	21	29.81	29.91
15	BKN	250				97	74	80	48	8	17	29.77	29.88	15	BKN	250				88	77	80	70	9	13	29.76	29.86
18	BKN	250				96	73	79	48	6	18	29.76	29.86	18	BKN	250				89	78	81	70	5	17	29.73	29.83
21	SCT	250				89	76	80	66	8	19	29.81	29.91	21	FEW	250				85	74	77	70	6	17	29.78	29.89
24	FEW	250				85	78	80	80	7	18	29.84	29.94	24	FEW	250				82	76	78	82	3	19	29.79	29.90
<b>SUNRISE: 0549</b>						<b>AUG 15</b>						<b>SUNSET: 1904</b>															
03	FEW	250				83	78	79	85	0	00	29.84	29.95	03	SCT	250				79	76	77	91	3	18	29.81	29.91
06	FEW	250				81	78	79	91	0	00	29.87	29.97	06	SCT	130				78	77	77	97	0	00	29.84	29.94
09	SCT	250				89	77	80	68	0	00	29.90	30.01	09	SCT	250				89	76	80	66	7	VR	29.89	29.99
12	SCT	046				95	75	80	53	3	31	29.87	29.98	12	SCT	250				94	71	78	47	8	22	29.88	29.98
15	SCT	250				99	73	80	43	0	00	29.82	29.92	15	SCT	250				97	71	79	43	7	22	29.83	29.93
18	SCT	250				96	76	81	53	6	16	29.77	29.88	18	BKN	250				95	73	79	49	9	18	29.81	29.91
21	FEW	250				90	78	81	68	6	17	29.80	29.91	21	SCT	250				87	74	78	65	9	19	29.87	29.97
24	FEW	250				86	76	79	72	6	24	29.82	29.93	24	CLR	NC				83	76	78	80	6	21	29.88	29.99
<b>SUNRISE: 0549</b>						<b>AUG 16</b>						<b>SUNSET: 1903</b>															
03	SCT	250				84	77	79	80	5	23	29.82	29.93	03	CLR	NC				81	76	77	85	0	00	29.86	29.96
06	BKN	250				83	77	79	82	5	24	29.83	29.94	06	FEW	250				79	75	76	88	6	24	29.89	30.00
09	OVC	250				87	76	79	70	10	29	29.86	29.96	09	SCT	021				87	76	79	70	11	23	29.94	30.04
12	BKN	250				97	74	80	48	6	33	29.81	29.91	12	FEW	039				93	73	79	52	9	23	29.90	30.00
15	BKN	120				81	75	77	82	24	04	29.83	29.93	15	FEW	060				96	71	78	44	7	24	29.83	29.93
18	OVC	250			-RA	80	77	78	91	3	23	29.81	29.91	18	CLR	NC				96	69	77	42	7	24	29.78	29.88
21	OVC	250				79	77	78	94	6	36	29.80	29.90	21	CLR	NC				89	73	78	59	7	22	29.81	29.91
24	BKN	250				79	77	78	94	5	35	29.80	29.91	24	CLR	NC				85	71	75	63	6	23	29.80	29.91
<b>SUNRISE: 0550</b>						<b>AUG 17</b>						<b>SUNSET: 1902</b>															
03	BKN	250				78	76	77	94	6	30	29.78	29.89	03	CLR	NC				82	75	77	79	6	23	29.78	29.89
06	BKN	250			BR	78	76	77	94	5	32	29.80	29.91	06	SCT	250				80	75	77	85	5	27	29.80	29.90
09	SCT	250				86	76	79	72	6	03	29.81	29.91	09	SCT	250				88	74	78	63	7	VR	29.82	29.93
12	SCT	250				91	76	80	62	0	00	29.80	29.91	12	BKN	250				97	72	79	45	7	28	29.79	29.89
15	SCT	250				96	74	80	49	0	00	29.73	29.84	15	BKN	250				99	72	80	42	5	17	29.72	29.82
18	BKN	250				94	76	81	56	7	19	29.71	29.81	18	BKN	250				85	73	77	67	8	20	29.72	29.82
21	OVC	250				87	76	79	70	6	18	29.78	29.88	21	BKN	250				82	72	75	72	7	19	29.75	29.85
24	BKN	250				86	78	80	77	6	20	29.78	29.88	24	BKN	250				79	72	74	79	0	00	29.72	29.83
<b>SUNRISE: 0550</b>						<b>AUG 18</b>						<b>SUNSET: 1901</b>															
03	BKN	250				84	77	79	80	3	23	29.80	29.91	03	SCT	250				78	73	75	85	0	00	29.72	29.82
06	BKN	250				83	78	79	85	3	23	29.83	29.93	06	SCT	250				76	73	74	90	0	00	29.75	29.85
09	BKN	250				88	77	80	70	7	28	29.85	29.96	09	BKN	250				88	73	77	61	5	03	29.78	29.88
12	BKN	250				94	74	80	52	6	19	29.84	29.95	12	SCT	130				96	70	78	43	3	VR	29.77	29.88
15	BKN	250				96	73	79	48	3	VR	29.78	29.88	15	BKN	120				94	66	75	40	10	31	29.71	29.81
18	BKN	250				92	77	81	62	9	19	29.77	29.88	18	BKN	250			-RA	90	71	77	54	5	18	29.69	29.80
21	BKN	250				87	76	79	70	3	21	29.81	29.92	21	BKN	250				84	73	76	70	0	00	29.77	29.87
24	BKN	250				85	75	78	72	3	19	29.81	29.91	24	SCT	250				79	73	75	82	5	32	29.80	29.90

# OBSERVATIONS AT 3-HOURLY INTERVALS

HOUSTON, TX  
AUGUST 2010

KIAH

WBAN # 12960

HOUR (LST)	SKY COVER	CEILING 100's of FT.	SATELLITE		WEATHER	TEMPERATURE °F			WIND SPEED (MPH) DIRECTION Tens of Deg	PRESSURE (INCHES, HG)													
			Observation Time (LST)	Eff Cl'd Amt Oktas		VISIBILITY (MILES)	DRY BULB	DEW POINT		WET BULB	RELATIVE HUMIDITY (PCT)	STATION	SEA LEVEL										
<b>SUNRISE: 0554</b>						<b>AUG 25</b>						<b>SUNSET: 1853</b>											
03	SCT	250				77	73	74	88	0	00	29.80	29.91										
06	FEW	250				77	74	75	91	5	35	29.84	29.94										
09	FEW	250				85	70	75	61	9	05	29.87	29.98										
12	FEW	250				96	65	75	36	11	03	29.86	29.97										
15	SCT	250				99	62	74	30	16	04	29.81	29.92										
18	SCT	250				94	61	72	33	13	04	29.81	29.92										
21	FEW	250				84	65	71	53	7	06	29.86	29.97										
24	SCT	250				80	64	70	58	3	35	29.89	30.00										
<b>SUNRISE: 0555</b>						<b>AUG 26</b>						<b>SUNSET: 1852</b>											
03	SCT	250				77	64	69	64	3	35	29.89	29.99										
06	SCT	250				76	66	70	71	6	01	29.90	30.01										
09	FEW	250				86	66	73	51	9	06	29.93	30.03										
12	FEW	050				93	63	73	37	10	07	29.91											
15	BKN	095				94	62	73	35	11	03	29.85											
18	SCT	250				92	60	71	34	8	05	29.83											
21	SCT	250				82	64	70	55	5	06	29.86											
24	FEW	250				77	65	69	67	3	05	29.87											
<b>SUNRISE: 0555</b>						<b>AUG 27</b>						<b>SUNSET: 1851</b>											
03	FEW	250				74	64	68	71	0	00	29.86	29.96										
06	FEW	250				72	62	66	71	3	01	29.87	29.97										
09	CLR	NC				84	59	68	43	8	04	29.89	29.99										
12	FEW	045				94	56	70	28	9	06	29.84	29.95										
15	FEW	050				97	56	71	25	3	VR	29.77	29.88										
18	FEW	250				91	61	71	37	9	10	29.75	29.85										
21	CLR	NC				80	65	70	60	0	00	29.77	29.87										
24	CLR	NC				76	66	70	71	0	00	29.77	29.87										
<b>SUNRISE: 0556</b>						<b>AUG 28</b>						<b>SUNSET: 1850</b>											
03	SCT	065				76	65	69	69	5	31	29.75	29.86										
06	CLR	NC				74	63	67	69	3	32	29.77	29.88										
09	CLR	NC				83	70	74	65	5	05	29.79	29.90										
12	BKN	041				94	72	78	49	9	04	29.76	29.87										
15	SCT	050				97	70	78	42	8	05	29.70	29.81										
18	SCT	049				91	72	78	54	11	11	29.69	29.80										
21	SCT	036				84	76	78	77	7	14	29.73	29.83										
24	SCT	032				82	76	78	82	7	11	29.76	29.86										
<b>SUNRISE: 0557</b>						<b>AUG 29</b>						<b>SUNSET: 1849</b>											
03	SCT	035				78	75	76	91	5	12	29.76	29.86										
06	SCT	030				77	74	75	91	3	03	29.79	29.89										
09	FEW	025				86	76	79	72	6	05	29.82	29.93										
12	SCT	042				94	71	78	47	5	VR	29.81	29.91										
15	SCT	085				93	75	80	56	11	17	29.77	29.87										
18	SCT	110				87	77	80	72	10	14	29.78	29.89										
21	SCT	035				83	76	78	80	5	16	29.82	29.93										
24	SCT	250				82	76	78	82	3	17	29.85	29.95										
<b>SUNRISE: 0557</b>						<b>AUG 30</b>						<b>SUNSET: 1848</b>											
03	SCT	023				79	76	77	91	5	11	29.86	29.97										
06	SCT	250				79	77	78	94	8	09	29.90	30.01										
09	SCT	250				88	78	81	72	8	11	29.93	30.03										
12	SCT	060				79	77	78	94	9	10	29.95	30.06										
15	BKN	100				87	79	81	77	10	11	29.91	30.01										
18	BKN	140				86	78	80	77	9	13	29.89	29.99										
21	BKN	250				82	78	79	88	9	11	29.90	30.01										
24	BKN	250				81	78	79	91	6	12	29.91	30.01										

HOUR (LST)	SKY COVER	CEILING 100's of FT.	SATELLITE		WEATHER	TEMPERATURE °F			WIND SPEED (MPH) DIRECTION Tens of Deg	PRESSURE (INCHES, HG)													
			Observation Time (LST)	Eff Cl'd Amt Oktas		VISIBILITY (MILES)	DRY BULB	DEW POINT		WET BULB	RELATIVE HUMIDITY (PCT)	STATION	SEA LEVEL										
<b>SUNRISE: 0558</b>						<b>AUG 31</b>						<b>SUNSET: 1846</b>											
03	SCT	250				79	77	78	94	0	00	29.89	30.00										
06	SCT	250				78	77	77	97	0	00	29.90	30.01										
09	SCT	250				86	79	81	80	7	08	29.94	30.04										
12	BKN	047				86	77	80	75	0	00	29.92	30.02										
15	SCT	110				83	78	79	85	8	13	29.88	29.98										
18	BKN	250				84	77	79	80	8	11	29.86	29.96										
21	BKN	250				80	77	78	91	6	12	29.86	29.97										
24	FEW	250				79	77	78	94	0	00	29.84	29.94										

## 3-HOURLY OBSERVATION NOTES

Sky Cover is the amount of the sky obscured. CLR or SKC = 0, FEW = 1/8-2/8, SCT = 3/8-4/8, BKN = 5/8-7/8, OVC = 8/8, W = Vertical Visibility = 8/8

Ceiling is reported in hundreds of feet above ground level for clouds at or below 12,000 feet. NC = No Ceiling detected.

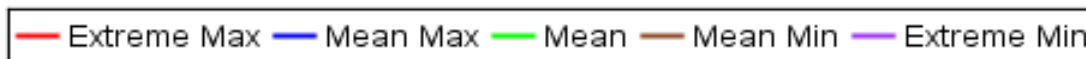
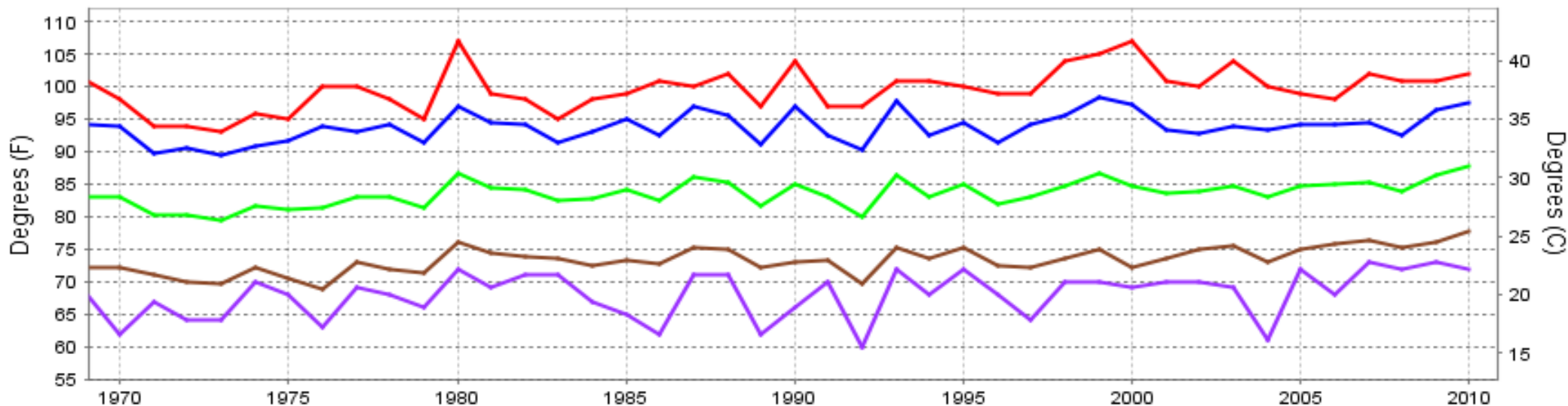
& = Original observation contained additional weather elements.

See page 3 for additional notes.

## SUMMARY BY HOUR

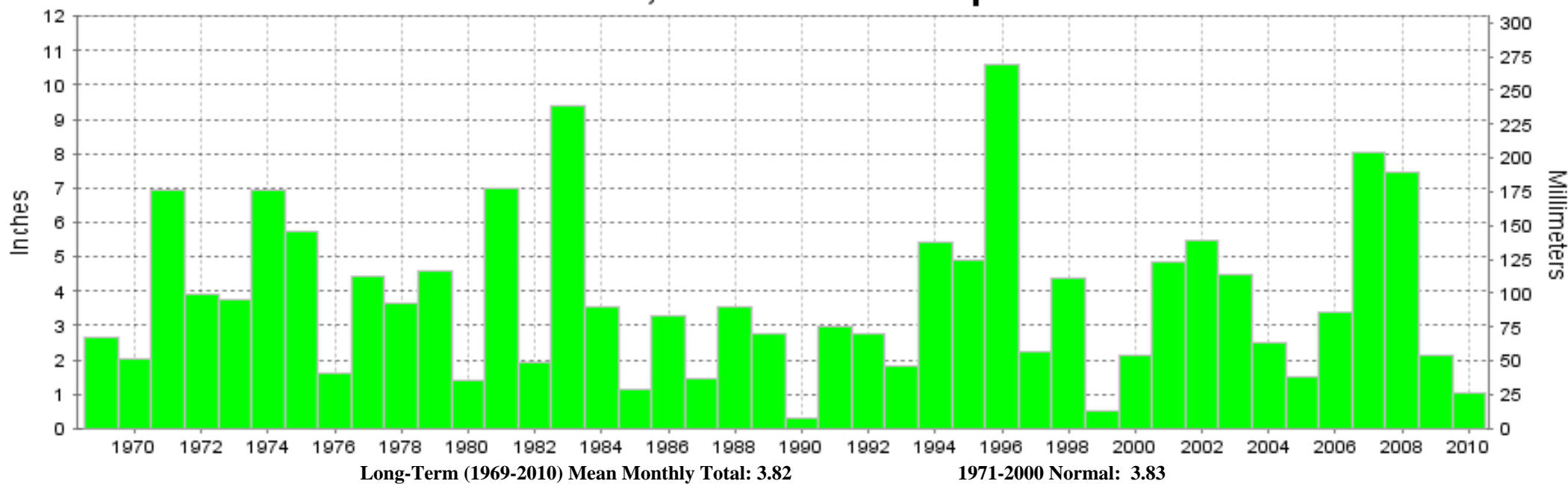
HOUR (LST)	AVERAGES										RESULTANT WIND (MPH)	
	CEILOMETER	EFF CLD AMT	DRY BULB	DEW POINT	WET BULB	RELATIVE HUMIDITY	PRESSURE (Inches, HG)		VISIBILITY (Miles)	WIND SPEED (MPH)	SPEED	DIRECTION
							STATION	SEA LEVEL				
01			82	74	77	78	29.80	29.91	9.90	4	3	21
02			81	75	77	82	29.80	29.91	9.90	2	4	20
03			80	75	76	83	29.80	29.91	9.90	2	4	20
04			80	75	76	85	29.81	29.91	9.81	2	4	19
05			79	75	76	87	29.81	29.92	9.77	2	6	19
06			79	75	76	88	29.83	29.93	9.61	2	5	19
07			81	75	77	83	29.84	29.94	9.68	3	3	19
08			84	75	78	75	29.85	29.95	9.94	5	3	22
09			87	75	78	67	29.86	29.96	10.00	6	3	21
10			90	74	79	60	29.86	29.96	10.00	6	3	20
11			92	73	78	55	29.85	29.96	9.81	6	3	19
12			93	72	78	52	29.84	29.94	9.90	6	3	18
13			94	72	78	49	29.82	29.92	10.00	6	3	17
14			95	71	78	48	29.80	29.90	10.00	6	4	15
15			94	72	78	50	29.78	29.89	9.94	7	4	14
16			94	72	78	51	29.77	29.87	10.00	9	3	13
17			93	72	78	53	29.77	29.87	9.87	8	5	12
18			91	73	78	57	29.76	29.87	9.90	8	4	12
19			89	73	78	62	29.77	29.87	9.87	7	3	13
20			87	74	78	66	29.78	29.89	9.97	6	3	15
21			86	74	77	69	29.80	29.90	9.97	6	2	17
22			84	74	77	72	29.81	29.91	9.94	5	2	17
23			84	75	77	75	29.81	29.91	9.90	4	2	18
24			83	75	77	77	29.81	29.91	9.90	4	3	19

## HOUSTON, TX AUGUST Temperatures



Long-Term (1969-2010) Mean: 83.6  
1971-2000 Normal: 83.3

## HOUSTON, TX AUGUST Precipitation



Long-Term (1969-2010) Mean Monthly Total: 3.82

1971-2000 Normal: 3.83



**AUGUST 2010  
HOUSTON, TX**

# **LOCAL CLIMATOLOGICAL DATA**

## **NOAA, National Climatic Data Center**

*I certify that this is an official publication of the National Oceanic and Atmospheric Administration (NOAA). It is compiled using information from weather observing sites operated by NOAA-National Weather Service / Department Of Transportation-Federal Aviation Administration and received at the National Climatic Data Center (NCDC), Asheville, North Carolina 28801.*

**DIRECTOR**

NCDC now offers an annual online subscription for the **Edited Local Climatological Data Publication**. When you purchase this subscription service, you will have **immediate online access** to all previous publications back to July 1996 and all publications thereafter until the expiration of the subscription. Your subscription is valid for one year after purchase. **The total cost for online delivery (including back issues) is significantly less than the cost for offline delivery.**

To order this and other subscriptions online with your credit card, go to: **[www.ncdc.noaa.gov](http://www.ncdc.noaa.gov)** and choose subscriptions.

We welcome your questions or comments, please contact us at:

Toll Free Number (866) 742-3322 (voice)

Fax Number : (304) 726-4409

TDD : (828) 271-4010

or Email : [ncdc.info@noaa.gov](mailto:ncdc.info@noaa.gov)

Local Climatological Data is available at [www.ncdc.noaa.gov](http://www.ncdc.noaa.gov)

NCDC Subscription Services Center  
310 State Route 956 Building 300  
Rocket Center, WV 26726  
OFFICIAL BUSINESS, PENALTY FOR PRIVATE USE \$300

FIRST CLASS  
POSTAGE AND FEES PAID  
NOAA  
PERMIT G-19

For address correction, please return a photocopy of this page to Subscription Services indicating changes