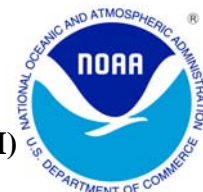




AUGUST 2012 LOCAL CLIMATOLOGICAL DATA

NOAA, National Climatic Data Center

HOUSTON, TX
G BUSH INTERCONTINENTAL AP/HOUSTON AP (KIAH)
Lat:29° 58'N Long: 95° 21'W Elev (Ground) 95 Feet
Time Zone : CENTRAL WBAN: 12960 ISSN#: 0198-5094



Date 1	Temperature °F						Deg Days BASE 65°		WEATHER 10	SNOW/ICE ON GND(IN)		PRECIPITATION ON GND(IN)		PRESSURE (INCHES OF HG)		WIND SPEED = MPH DIR = TENS OF DEGREES								Date 24
	MAXIMUM 2	MINIMUM 3	AVERAGE 4	DEP FROM NORMAL 5	AVERAGE DEW PT 6	AVERAGE WET BULB 7	HEATING 8	COOLING 9		0600 LST 11	1200 LST 12	2400 LST 13	2400 LST 14	AVERAGE STATION 15	AVERAGE SEA LEVEL 16	RESULTANT SPEED 17	RES DIR 18	AVERAGE SPEED 19	MAXIMUM					
																			3-SEC		2-MIN			
20	21	22	23	24																				
01	96	79	88	4	72	77	0	23		0		0.0	0.00	29.83	29.95	5.7	20	6.6	22	31	13	19	01	
02	95	79	87	3	73	77	0	22		0		0.0	0.00	29.78	29.90	5.6	20	6.9	20	15	15	16	02	
03	97	80	89	5	73	77	0	24		0		0.0	0.00	29.79	29.90	6.4	18	6.8	20	18	16	16	03	
04	96	78	87	3	73	77	0	22		0		0.0	0.00	29.86	29.96	4.0	16	5.1	22	14	18	16	04	
05	94	76	85	1	74	76	0	20	TS TSRA RA	0		0.0	0.04	29.95	30.05	0.3	27	3.1	24	11	21	11	05	
06	97	75	86	2	73	77	0	21	RA	0		0.0	T	29.90	30.02	1.5	11	4.6	24	11	21	11	06	
07	97	76	87	3	73	77	0	22		0		0.0	0.00	29.83	29.94	2.0	18	3.0	18	11	13	13	07	
08	96	75	86	2	73	77	0	21		0		0.0	0.00	29.83	29.95	3.2	17	5.0	23	16	20	15	08	
09	97	77	87	3	73	77	0	22		0		0.0	0.00	29.80	29.92	4.1	22	4.9	26	30	13	24	09	
10	98	79	89	5	74	77	0	24	TS RA	0		0.0	T	29.75	29.87	4.8	23	5.7	24	28	17	27	10	
11	98	78	88	4	74	78	0	23		0		0.0	0.00	29.78	29.90	2.9	20	4.5	20	14	16	14	11	
12	97	77	87	3	74	78	0	22		0		0.0	0.00	29.84	29.94	5.3	19	6.3	26	15	21	15	12	
13	98	80	89	5	73	78	0	24		0		0.0	0.00	29.85	29.96	6.0	21	6.9	20	28	14	23	13	
14	98	80	89	5	74	78	0	24		0		0.0	0.00	29.82	29.93	6.9	20	7.7	21	18	14	18	14	
15	98	79	89	5	73	77	0	24		0		0.0	0.00	29.81	29.92	6.5	19	6.9	21	17	16	16	15	
16	98	78	88	5	74	78	0	23		0		0.0	0.00	29.85	29.97	5.3	17	5.9	18	18	14	17	16	
17	97	78	88	5	75	78	0	23		0		0.0	0.00	29.83	29.95	4.8	20	5.7	22	15	17	17	17	
18	94	73	84	1	75	76	0	19	TS TSRA RA BR	0		0.0	1.44	29.78	29.90	1.0	28	5.3	38*	14	35*	14	18	
19	90	73	82	-1	73	75	0	17	TS TSRA RA BR	0		0.0	1.68	29.78	29.90	1.5	15	4.9	23	31	18	31	19	
20	96	75	86	3	70	74	0	21		0		0.0	0.00	29.78	29.89	0.6	05	4.7	16	09	14	09	20	
21	91	72*	82	-1	70	73	0	17	RA	0		0.0	T	29.86	29.97	6.1	05	6.6	18	04	15	05	21	
22	91	75	83	0	70	73	0	18	RA	0		0.0	0.01	29.90	30.00	6.8	09	7.8	25	11	22	09	22	
23	90	74	82	-1	73	75	0	17	RA	0		0.0	0.50	29.85	29.98	6.2	09	7.3	28	11	23	11	23	
24	88	75	82*	-1	74	76	0	17	RA	0		0.0	0.20	29.80	29.92	4.9	15	6.5	22	16	17	15	24	
25	91	75	83	1	74	76	0	18	TS RA	0		0.0	0.01	29.82	29.92	7.7	14	8.2	31	13	26	12	25	
26	92	75	84	2	73	76	0	19		0		0.0	0.00	29.88	29.98	6.1	13	6.6	20	14	16	15	26	
27	96	74	85	3	72	75	0	20		0		0.0	0.00	29.83	29.95	2.8	01	3.5	17	35	14	35	27	
28	97	78	88	6	71	76	0	23		0		0.0	0.00	29.69	29.82	8.4	36	8.8	28	03	20	01	28	
29	98	80	89	7	68	74	0	24		0		0.0	0.00	29.57	29.69	11.6	35	12.5	30	02	24	01	29	
30	99*	78	89	7	69	75	0	24		0		0.0	0.00	29.59	29.69	4.9	32	8.8	23	33	17	32	30	
31	96	81	89*	7	76	79	0	24		0		0.0	0.00	29.83	29.92	8.8	18	9.2	24	14	21	15	31	
95.4		76.8	86.1	☼	72.8	76.4	0.0	21.4	< MONTHLY AVERAGES TOTALS >		0.0	3.88	29.81	29.92	2.0	17	6.3	< MONTHLY AVERAGES						
0.9		2.0	1.5		-----DEPARTURE FROM NORMAL ----->								0.12	SUNSHINE, CLOUD, & VISIBILITY TABLES ON PAGE 3										
DEGREE DAYS									GREATEST 24-HR PRECIPITATION : 3.10 DATE : 18-19				SEA LEVEL PRESSURE				DATE		TIME					
MONTHLY				SEASON TO DATE					GREATEST 24-HR SNOWFALL : 0.0 DATE :				MAXIMUM :				06		0753					
TOTAL DEPARTURE				TOTAL DEPARTURE					GREATEST SNOW DEPTH : 0 DATE :				MINIMUM :				29		1553					
HEATING :		0		0		0		0		NUMBER OF ->		MAXIMUM TEMP >= 90 : 30		MINIMUM TEMP <= 32 : 0		PRECIPITATION >= 0.01 INCH:		7						
COOLING :		662		53		2751		369		THUNDERSTORMS : 5		MAXIMUM TEMP <= 32 : 0		MINIMUM TEMP <= 0 : 0		PRECIPITATION >= 0.10 INCH:		4						
												HEAVY FOG : 0				SNOWFALL >= 1.0 INCH :		0						

AUGUST 2012
HOUSTON, TX

HOURLY PRECIPITATION

(WATER EQUIVALENT IN INCHES)

HOUSTON, TX (KIAH)
AUGUST 2012

WBAN # 12960

Date	FOR HOUR (LST) ENDING AT												Date	FOR HOUR (LST) ENDING AT												Date	Sum of Hourly Data	2400 LST Water Equiv.
	1	2	3	4	5	6	7	8	9	10	11	12		13	14	15	16	17	18	19	20	21	22	23	24			
01													01												01	0.00	0.00	
02													02												02	0.00	0.00	
03													03												03	0.00	0.00	
04													04												04	0.00	0.00	
05													05			T	0.04	T							05	0.04	0.04	
06													06												06	T	T	
07													07												07	0.00	0.00	
08													08												08	0.00	0.00	
09													09												09	0.00	0.00	
10													10					T						10	T	T		
11													11												11	0.00	0.00	
12													12												12	0.00	0.00	
13													13												13	0.00	0.00	
14													14												14	0.00	0.00	
15													15												15	0.00	0.00	
16													16												16	0.00	0.00	
17													17												17	0.00	0.00	
18													18												18	1.44	1.44	
19	0.21	0.02	1.08	0.03	T	0.07	0.02	0.04	0.13	0.06	0.05		19			0.02	0.95	0.04		0.14	0.24			19	1.68	1.68		
20											T		20												20	0.00	0.00	
21													21												21	T	T	
22													22												22	0.01	0.01	
23				0.01									23												23	0.50	0.50	
24					T	0.01							24			0.05	0.35	0.09		T	T			24	0.20	0.20		
25											0.04		25			0.15	T							25	0.01	0.01		
26													26			0.01								26	0.00	0.00		
27													27											27	0.00	0.00		
28													28											28	0.00	0.00		
29													29											29	0.00	0.00		
30													30											30	0.00	0.00		
31													31											31	0.00	0.00		

* Indicates sum of Hourly and Daily disagree.

MAXIMUM SHORT DURATION PRECIPITATION (See Note)

Time Period (Minutes)	5	10	15	20	30	45	60	80	100	120	150	180
Precipitation (Inches)	0.40	0.65	0.86	0.91	0.95	0.99	1.09	1.11	1.12	1.12	1.13	1.31
Ending Date	18	18	18	18	18	18	19	19	19	19	19	19
Ending Time (Hr/Min)	1446	1445	1446	1448	1457	1502	0258	0317	0329	0329	0329	0305

Note : The hourly and daily precipitation totals are printed in the last 2 columns and hi-lighted in red when they disagree. NWS does not edit ASOS hourly values but may edit daily and monthly totals. Hourly, daily, and monthly totals are printed as reported by the ASOS site.

Date and time are not entered for TRACE amounts.

REFERENCE NOTES & SUPPLEMENTAL SUMMARIES

* = Extreme for the month (last occurrence if more than one).

T = Trace precipitation amount.

+ = also occurs on earlier date.

FG+ = Heavy fog, visibility .25 miles or less.

BLANK entries denote missing or unreported data.

Resultant wind is the vector sum of the wind speeds and directions divided by the number of observations.

Wind direction is recorded in tens of degrees (2 digits) clockwise from true north. '00' = calm, 'VR' = variable.

Precipitation is for the 24-hour period ending at the time indicated in the column heading.

Water Equivalent of snow on the ground is reported only when the depth is 2 or more inches.

NORMALS ARE FOR THE YEARS 1981-2010

WEATHER NOTATIONS

QUALIFIER	WEATHER PHENOMENA		
DESCRIPTOR	PRECIPITATION	OBSCURATION	OTHER
BC Patches	DZ Drizzle	BR Mist	DS Duststorm
BL Blowing	GR Hail	DU Widespread Dust	FC Funnel Cloud
DR Low Drifting	GS Small Hail and/or Snow Pellets	FG Fog	+FC Tornado Waterspout
FZ Freezing	IC Ice Crystals	FU Smoke	PO Well-Developed Dust/Sand Whirls
MI Shallow	PL Ice Pellets	HZ Haze	
PR Partial	RA Rain	PY Spray	SQ Squalls
SH Shower(s)	SG Snow Grains	SA Sand	SS Sandstorm
TS Thunderstorm	SN Snow	VA Volcanic Ash	GL Glaze
VC In the Vicinity	UP Unkown Precipitation		

Intensity (as indicated on pages 4 to 6):
'+' = Heavy '' = Moderate '-' = Light

HOUSTON, TX AUGUST 2012

Ceilometer (30-second) data are used to derive cloudiness at or below 12,000 feet. This cloudiness is the mean cloud cover detected during sunrise to sunset (SR-SS), or midnight to midnight (MN-MN).

Satellite data are used to derive cloudiness above 12,000 feet. Effective Cloud Amount is based on the cloud cover and the transparency of the clouds within the satellite field of view (approx. 31x31 miles).

Sky Condition is based on the sum (not to exceed 8) of the sunrise to sunset cloud cover below and above 12,000 feet. Both ceilometer and satellite data must be present to compute Sky Condition. Clear = 0-2 oktas, Partly Cloudy = 3-6 oktas, Cloudy = 7-8 oktas.

A Heating (Cooling) Degree Day is the difference between the average daily temperature and 65 degrees F. The HDD season begins July 1, the CDD season begins January 1.

Dew Point is the temperature to which the air must be cooled to achieve 100% relative humidity. Wet Bulb is the temperature the air would have if cooled to saturation at constant pressure by evaporation of water into it.

Snow Depth, Snowfall, and Sunshine data may come from nearby sites that the National Weather Service deems Climatologically representative of this site.

ADDITIONAL NOTES:

Date	SUNSHINE		CLOUDINESS (OKTAS)				VISIBILITY (MILES)		RESERVED
	TOTAL MINUTES	PERCENT POSSIBLE	SR-SS		MN-MN		MINIMUM	MAXIMUM	
			Sky Cover	Satellite	Sky Cover	Satellite			
01							10.00	10.00	
02							10.00	10.00	
03							9.00	10.00	
04							10.00	10.00	
05							10.00	10.00	
06							9.00	10.00	
07							10.00	10.00	
08							10.00	10.00	
09							10.00	10.00	
10							10.00	10.00	
11							7.00	10.00	
12							10.00	10.00	
13							10.00	10.00	
14							10.00	10.00	
15							10.00	10.00	
16							10.00	10.00	
17							10.00	10.00	
18							4.00	10.00	
19							3.00	10.00	
20							7.00	10.00	
21							10.00	10.00	
22							10.00	10.00	
23							9.00	10.00	
24							10.00	10.00	
25							9.00	10.00	
26							9.00	10.00	
27							10.00	10.00	
28							10.00	10.00	
29							10.00	10.00	
30							10.00	10.00	
31							10.00	10.00	
MONTHLY AVGS							9.23	10.00	
SUNSHINE (Minutes)									
Total : 0					Possible : 24560				
Percent Possible : 0									
NUMBER OF DAYS WITH :									
SKY CONDITION									
Clear		Partly CLDY			Cloudy			Missing	
MINIMUM VISIBILITY (MILES)									
<= .25			<= 3.0				>= 7.0		
0			1				29		

OBSERVATIONS AT 3-HOURLY INTERVALS

HOUSTON, TX
AUGUST 2012

KIAH

WBAN # 12960

HOUR (LST)	SKY COVER	CEILING 100's of FT.	SATELLITE		WEATHER	TEMPERATURE °F			WIND RELATIVE HUMIDITY (PCT)	PRESSURE (INCHES, HG)		HOUR (LST)	SKY COVER	CEILING 100's of FT.	SATELLITE		WEATHER	TEMPERATURE °F			WIND RELATIVE HUMIDITY (PCT)	PRESSURE (INCHES, HG)					
			Observation Time (LST)	Eff Cld Amt Oktas		VISIBILITY (MILES)	DRY BULB	DEW POINT		WET BULB	STATION				SEA LEVEL	Observation Time (LST)		Eff Cld Amt Oktas	VISIBILITY (MILES)	DRY BULB		DEW POINT	WET BULB	STATION	SEA LEVEL		
																										WEATHER	WEATHER
SUNRISE: 0540						AUG 01						SUNSET: 1915															
03	FEW	250			10.00	80	74	76	82	7	20	29.85	29.96	03	BKN	250			10.00	80	74	76	82	3	28	29.83	29.93
06	FEW	250			10.00	79	74	76	85	5	23	29.87	29.97	06	BKN	250			10.00	77	74	75	91	0	00	29.86	29.97
09	SCT	022			10.00	86	73	77	65	11	23	29.90	30.01	09	SCT	250			10.00	86	75	78	70	0	00	29.88	29.99
12	SCT	035			10.00	91	71	77	52	3	VR	29.87	29.98	12	SCT	250			10.00	93	72	78	51	0	00	29.86	29.96
15	SCT	120			10.00	95	70	77	44	6	18	29.82	29.93	15	SCT	250			10.00	95	71	78	46	5	06	29.80	29.91
18	SCT	250			10.00	94	69	77	44	7	18	29.77	29.88	18	BKN	250			10.00	92	71	77	50	6	19	29.79	29.89
21	CLR	NC			10.00	86	74	78	68	11	18	29.81	29.91	21	FEW	250			10.00	85	71	75	63	9	18	29.82	29.93
24	CLR	NC			10.00	81	75	77	82	7	22	29.81	29.91	24	CLR	NC			10.00	80	73	75	79	0	00	29.84	29.95
SUNRISE: 0541						AUG 02						SUNSET: 1915															
03	CLR	NC			10.00	80	74	76	82	6	22	29.78	29.89	03	CLR	NC			10.00	77	73	74	88	0	00	29.83	29.93
06	FEW	250			10.00	80	75	77	85	0	00	29.80	29.91	06	SCT	250			10.00	76	73	74	90	0	00	29.85	29.96
09	SCT	250			10.00	84	73	76	70	10	24	29.85	29.95	09	FEW	024			10.00	86	74	78	68	5	27	29.89	29.99
12	SCT	040			10.00	92	72	78	52	5	VR	29.82	29.93	12	BKN	250			10.00	92	71	77	50	7	24	29.88	29.98
15	SCT	250			10.00	94	71	78	47	7	20	29.77	29.88	15	BKN	110			10.00	93	73	79	52	14	13	29.81	29.91
18	SCT	250			10.00	92	72	78	52	11	16	29.74	29.84	18	BKN	250			10.00	90	72	77	56	11	14	29.81	29.91
21	CLR	NC			10.00	85	73	77	67	7	18	29.77	29.87	21	SCT	250			10.00	85	73	77	67	7	18	29.84	29.95
24	CLR	NC			10.00	82	74	76	77	6	18	29.77	29.87	24	FEW	250			10.00	82	74	76	77	5	18	29.84	29.95
SUNRISE: 0542						AUG 03						SUNSET: 1914															
03	CLR	NC			10.00	80	74	76	82	3	17	29.75	29.86	03	CLR	NC			10.00	78	74	75	88	0	00	29.84	29.94
06	SCT	250			9.00	80	74	76	82	5	18	29.79	29.90	06	SCT	130			10.00	78	74	75	88	0	00	29.87	29.98
09	BKN	024			10.00	86	75	78	70	8	21	29.83	29.94	09	SCT	150			10.00	87	75	78	68	5	25	29.88	29.98
12	SCT	042			10.00	92	72	78	52	7	19	29.83	29.93	12	SCT	250			10.00	92	70	77	49	6	24	29.85	29.96
15	SCT	060			10.00	95	69	77	43	8	18	29.77	29.88	15	BKN	250			10.00	95	70	77	44	7	VR	29.79	29.90
18	SCT	250			10.00	93	69	76	46	10	17	29.75	29.85	18	SCT	250			10.00	95	68	76	41	7	23	29.76	29.86
21	FEW	250			10.00	85	73	77	67	11	16	29.80	29.90	21	FEW	250			10.00	87	74	78	65	7	20	29.78	29.88
24	FEW	025			10.00	82	74	76	77	7	17	29.81	29.92	24	CLR	NC			10.00	83	75	77	77	8	20	29.78	29.88
SUNRISE: 0542						AUG 04						SUNSET: 1913															
03	FEW	025			10.00	81	74	76	79	0	00	29.81	29.91	03	CLR	NC			10.00	81	76	77	85	3	23	29.78	29.89
06	SCT	250			10.00	80	74	76	82	0	00	29.85	29.95	06	SCT	250			10.00	80	76	77	88	5	25	29.79	29.89
09	BKN	250			10.00	87	74	78	65	5	24	29.88	29.98	09	SCT	250			10.00	87	75	78	68	6	25	29.82	29.93
12	SCT	250			10.00	93	71	78	49	5	VR	29.88	29.98	12	FEW	030			10.00	95	74	80	51	11	21	29.78	29.89
15	SCT	250			10.00	93	73	79	52	10	18	29.85	29.95	15	FEW	050			10.00	98	71	79	42	9	24	29.72	29.83
18	SCT	250			10.00	90	74	79	59	14	13	29.83	29.94	18	BKN	250			10.00	92	73	78	54	5	24	29.70	29.81
21	SCT	250			10.00	85	73	77	67	7	16	29.90	30.00	21	SCT	250			10.00	81	72	75	74	5	03	29.76	29.86
24	SCT	250			10.00	83	74	77	74	0	00	29.91	30.01	24	SCT	250			10.00	80	74	76	82	0	00	29.76	29.86
SUNRISE: 0543						AUG 05						SUNSET: 1912															
03	SCT	250			10.00	78	74	75	88	0	00	29.91	30.01	03	SCT	250			10.00	79	76	77	91	0	00	29.77	29.88
06	SCT	250			10.00	77	74	75	91	0	00	29.95	30.06	06	BKN	250			10.00	80	77	78	91	0	00	29.80	29.91
09	SCT	250			10.00	88	75	79	65	7	36	29.98	30.09	09	SCT	070			10.00	87	76	79	70	8	27	29.84	29.95
12	BKN	250			10.00	92	71	77	50	6	VR	29.98	30.08	12	SCT	250			10.00	93	69	76	46	6	24	29.83	29.94
15	SCT	065			10.00	84	73	76	70	8	20	29.97	30.08	15	SCT	250			10.00	98	69	78	39	0	00	29.76	29.87
18	BKN	250			10.00	80	75	77	85	0	00	29.93	30.03	18	SCT	250			10.00	97	67	76	38	0	00	29.75	29.85
21	SCT	250			10.00	77	74	75	91	0	00	29.94	30.05	21	SCT	250			10.00	86	77	80	75	7	17	29.78	29.88
24	SCT	250			10.00	76	74	75	94	0	00	29.97	30.07	24	FEW	250			10.00	83	77	79	82	7	19	29.80	29.91
SUNRISE: 0543						AUG 06						SUNSET: 1912															
03	BKN	250			10.00	78	75	76	91	3	29	29.92	30.03	03	FEW	250			10.00	81	78	79	91	5	18	29.81	29.91
06	BKN	250			9.00	77	74	75	91	5	35	29.97	30.07	06	FEW	250			10.00	79	76	77	91	0	00	29.85	29.95
09	SCT	200			10.00	84	73	76	70	6	31	29.98	30.08	09	SCT	250			10.00	87	76	79	70	11	22	29.88	29.99
12	SCT	250			10.00	91	72	78	54	6	VR	29.96	30.06	12	SCT	046			10.00	91	71	77	52	5	VR	29.87	29.98
15	SCT	250			10.00	93	71	78	49	8	07	29.87	29.97	15	SCT	250			10.00	97	67	76	38	6	21	29.81	29.92
18	BKN	250			10.00	91	70	76	50	8	08	29.85	29.96	18	SCT	250			10.00	92	71	77	50	10	17	29.79	29.89
21	OVC	250			10.00	80	74	76	82	10	14	29.88	29.98	21	FEW	250			10.00	86	74	78	68	6	18	29.84	29.94
24	BKN	250			10.00	79	75	76	88	5	17	29.86	29.96	24	BKN	100			10.00	83	75	77	77	8	18	29.88	29.98

OBSERVATIONS AT 3-HOURLY INTERVALS

HOUSTON, TX
AUGUST 2012

KIAH

WBAN # 12960

Table with columns: HOUR (LST), SKY COVER, CEILING 100's of FT., SATELLITE (Observation Time (LST), Eff Clid Amt Oktas), VISIBILITY (MILES), WEATHER, TEMPERATURE (°F) (DRY BULB, DEW POINT, WET BULB), WIND (RELATIVE HUMIDITY (PCT), SPEED (MPH), DIRECTION Tens of Deg), PRESSURE (INCHES, HG) (STATION, SEA LEVEL).

OBSERVATIONS AT 3-HOURLY INTERVALS

HOUSTON, TX
AUGUST 2012

KIAH

WBAN # 12960

Table with columns: HOUR (LST), SKY COVER, CEILING 100's of FT., SATELLITE (Observation Time (LST), Eff Cld Amt Oktas), VISIBILITY (MILES), WEATHER, TEMPERATURE °F (DRY BULB, DEW POINT, WET BULB), WIND (SPEED (MPH), DIRECTION Tens of Deg), PRESSURE (INCHES, HG) (STATION, SEA LEVEL). Rows for August 25-30.

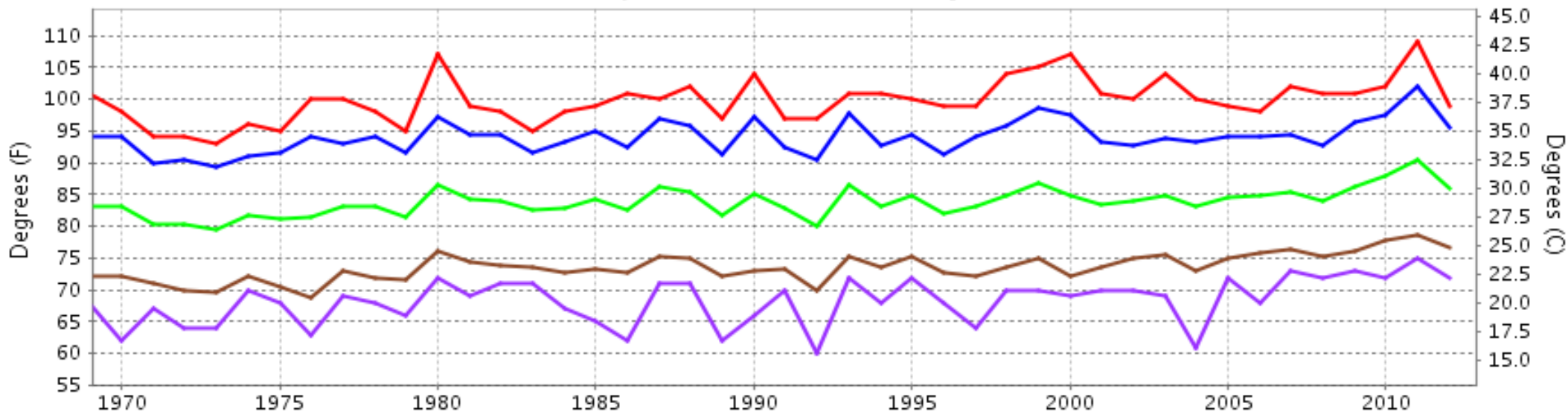
Table with columns: HOUR (LST), SKY COVER, CEILING 100's of FT., SATELLITE (Observation Time (LST), Eff Cld Amt Oktas), VISIBILITY (MILES), WEATHER, TEMPERATURE °F (DRY BULB, DEW POINT, WET BULB), WIND (SPEED (MPH), DIRECTION Tens of Deg), PRESSURE (INCHES, HG) (STATION, SEA LEVEL). Rows for August 31.

3-HOURLY OBSERVATION NOTES
Sky Cover is the amount of the sky obscured. CLR or SKC = 0, FEW = 1/8-2/8, SCT = 3/8-4/8, BKN = 5/8-7/8, OVC = 8/8, W = Vertical Visibility = 8/8
Ceiling is reported in hundreds of feet above ground level for clouds at or below 12,000 feet. NC = No Ceiling detected.
& = Original observation contained additional weather elements.
See page 3 for additional notes.

SUMMARY BY HOUR

Table with columns: HOUR (LST), CEILOMETER, EFF CLD AMT, DRY BULB, DEW POINT, WET BULB, RELATIVE HUMIDITY, PRESSURE (Inches, HG) (STATION, SEA LEVEL), VISIBILITY (Miles), WIND SPEED (MPH), RESULTANT WIND (MPH) (SPEED, DIRECTION). Rows for hours 01-24.

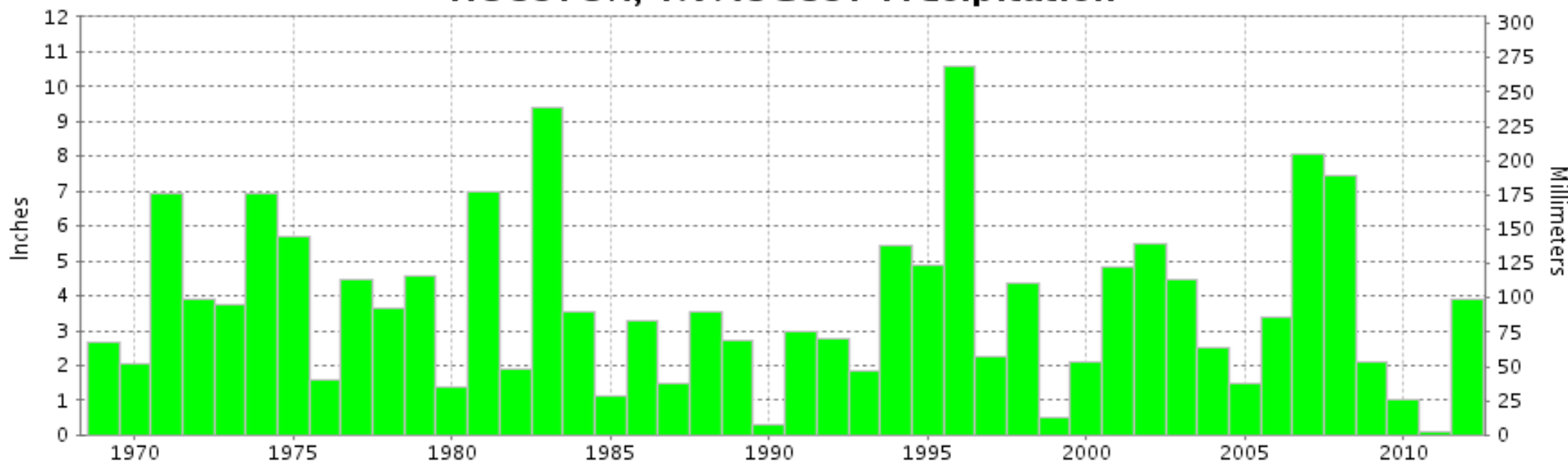
HOUSTON, TX AUGUST Temperatures



— Extreme Max — Mean Max — Mean — Mean Min — Extreme Min

Long-Term (1969-2012) Mean: 83.8
1971-2000 Normal: 84.6

HOUSTON, TX AUGUST Precipitation



Long-Term (1969-2012) Mean Monthly Total: 3.74

1971-2000 Normal: 3.76



**AUGUST 2012
HOUSTON, TX**

**LOCAL CLIMATOLOGICAL DATA
NOAA, National Climatic Data Center**

I certify that this is an official publication of the National Oceanic and Atmospheric Administration (NOAA). It is compiled using information from weather observing sites operated by NOAA-National Weather Service / Department Of Transportation-Federal Aviation Administration and received at the National Climatic Data Center (NCDC), Asheville, North Carolina 28801.

A handwritten signature in black ink, appearing to read "Thomas R. Karl".

DIRECTOR

NCDC now offers free online access to the **Edited Local Climatological Data Publication**. Go to : www.ncdc.noaa.gov and choose Most Popular.

We welcome your questions or comments, please contact us at:
(828) 271-4800, option 2
Fax Number : 828-271-4876
TDD : (828) 271-4010
or Email : ncdc.info@noaa.gov

NOAA\National Climatic Data Center
Attn: User Engagement & Services Branch
151 Patton Avenue
Asheville, NC 28801-5001