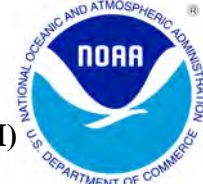




OCTOBER 2012 LOCAL CLIMATOLOGICAL DATA

NOAA, National Climatic Data Center

HOUSTON, TX
G BUSH INTERCONTINENTAL AP/HOUSTON AP (KIAH)
Lat:29° 58'N Long: 95° 21'W Elev (Ground) 95 Feet
Time Zone : CENTRAL WBAN: 12960 ISSN#: 0198-5094



OCTOBER 2012
HOUSTON, TX

Date 1	Temperature °F						Deg Days BASE 65°		WEATHER 10	SNOW/ICE ON GND(IN)		PRECIPITATION ON GND(IN)		PRESSURE (INCHES OF HG)		WIND SPEED = MPH DIR = TENS OF DEGREES								Date 24
	MAXIMUM 2	MINIMUM 3	AVERAGE 4	DEP FROM NORMAL 5	AVERAGE DEW PT 6	AVERAGE WET BULB 7	HEATING 8	COOLING 9		0600 LST 11	1200 LST 12	2400 LST 13	2400 LST 14	AVERAGE STATION 15	AVERAGE SEA LEVEL 16	RESULTANT SPEED 17	RES DIR 18	AVERAGE SPEED 19	MAXIMUM					
																			3-SEC		2-MIN			
																			SPEED 20	DIR 21	SPEED 22	DIR 23		
01	84	59	72	-3	55	62	0	7			0.0	0.00	29.68	29.80	9.4	31	9.7	25	34	17	34	01		
02	83	61	72	-3	57	62	0	7	RA		0.0	0.00	29.80	29.90	3.5	33	4.8	25	02	17	36	02		
03	85	59	72	-3	60	64	0	7			0.0	0.00	29.90	30.00	3.5	15	4.4	20	12	15	12	03		
04	88	63	76	2	66	69	0	11			0.0	0.00	29.99	30.10	6.8	13	7.1	22	11	18	14	04		
05	88	66	77	3	66	70	0	12	MIFG		0.0	0.00	29.93	30.05	4.3	15	4.7	17	12	14	12	05		
06	86	61	74	1	64	67	0	9	BR		0.0	0.00	29.91	30.02	5.2	02	7.1	26	01	22	01	06		
07	68	54	61	-12	48	54	4	0	RA		0.0	0.00	30.03	30.14	12.2	01	12.4	28	04	20	02	07		
08	72	53	63	-10	50	55	2	0	RA		0.0	0.00	30.03	30.15	5.4	02	7.5	25	08	14	36	08		
09	84	57	71	-2	61	64	0	6			0.0	0.00	29.91	30.03	5.3	15	6.8	21	23	15	16	09		
10	90*	65	78	6	69	71	0	13			0.0	0.00	29.96	30.07	4.6	13	5.3	25	15	21	14	10		
11	88	70	79	7	70	73	0	14			0.0	0.00	30.01	30.12	9.3	13	9.6	24	14	18	13	11		
12	89	70	80*	8	70	72	0	15	BR		0.0	0.00	30.02	30.14	7.5	13	7.9	22	13	17	13	12		
13	89	68	79	8	70	73	0	14			0.0	0.00	29.91	30.04	10.0	16	10.1	31*	15	23	15	13		
14	84	72	78	7	72	74	0	13	TS RA		0.0	0.37	29.90	30.02	3.3	18	4.9	20	28	14	17	14		
15	82	61	72	1	56	63	0	7			0.0	0.00	29.90	30.02	4.2	02	5.2	18	05	15	06	15		
16	79	58	69	-1	61	63	0	4	RA BR		0.0	0.58	29.77	29.90	2.1	16	2.8	15	15	13	15	16		
17	89	62	76	6	69	71	0	11			0.0	0.00	29.60	29.73	5.1	20	6.3	24	22	16	22	17		
18	80	62	71	1	57	63	0	6	RA		0.0	0.00	29.78	29.88	7.0	03	7.3	23	02	18	03	18		
19	83	52	68	-2	46	56	0	3			0.0	0.00	29.85	29.96	1.4	32	1.9	15	30	12	31	19		
20	85	52	69	0	58	63	0	4			0.0	0.00	29.79	29.91	6.9	16	6.9	23	16	18	15	20		
21	88	70	79	10	69	71	0	14			0.0	0.00	29.83	29.95	9.3	15	9.7	26	14	21	14	21		
22	87	69	78	10	69	71	0	13			0.0	0.00	29.88	29.98	9.7	14	10.0	26	15	21	15	22		
23	87	65	76	8	67	70	0	11	BCFG		0.0	0.00	29.85	29.97	5.7	14	6.1	22	15	17	15	23		
24	87	66	77	9	69	72	0	12	BCFG		0.0	0.00	29.83	29.95	6.6	14	7.2	24	12	20	13	24		
25	88	70	79	12	70	73	0	14			0.0	0.00	29.78	29.89	7.4	15	8.0	21	15	16	16	25		
26	73	53	63	-4	54	56	2	0	RA BR		0.0	0.05	29.99	30.08	12.7	35	13.0	29	35	23*	35	26		
27	66	48	57	-10	40	49	8	0			0.0	0.00	30.05	30.16	10.7	36	11.1	29	01	21	35	27		
28	68	42	55*	-11	34	45	10	0			0.0	0.00	30.09	30.20	4.7	35	5.5	20	01	16	34	28		
29	71	42	57	-9	33	45	8	0			0.0	0.00	30.08	30.21	1.4	36	2.2	14	02	9	36	29		
30	75	42*	59	-7	45	52	6	0			0.0	0.00	29.95	30.08	1.3	16	2.7	22	22	12	14	30		
31	84	52	68	2	58	62	0	3			0.0	0.00	29.89	30.01	2.4	25	3.3	18	29	14	29	31		
82.3		59.5	70.9	☼	59.1	63.7	1.3	7.4	< MONTHLY AVERAGES TOTALS >				0.0	1.00	29.90	30.01	1.8	11	6.8	< MONTHLY AVERAGES				
0.3		-1.4	-0.6		<----- DEPARTURE FROM NORMAL ----->								-4.70		SUNSHINE, CLOUD, & VISIBILITY TABLES ON PAGE 3									
DEGREE DAYS									GREATEST 24-HR PRECIPITATION : 0.58 DATE : 16				SEA LEVEL PRESSURE				DATE TIME							
MONTHLY									GREATEST 24-HR SNOWFALL : 0.0 DATE :				MAXIMUM : 30.30				29 1010							
TOTAL DEPARTURE									GREATEST SNOW DEPTH : 0 DATE :				MINIMUM : 29.62				17 1653							
SEASON TO DATE									NUMBER OF -> DAYS WITH				MAXIMUM TEMP >= 90 : 1				MINIMUM TEMP <= 32 : 0				PRECIPITATION >= 0.01 INCH : 3			
HEATING : 40 11 40 10									MAXIMUM TEMP <= 32 : 0				MINIMUM TEMP <= 0 : 0				PRECIPITATION >= 0.10 INCH : 2							
COOLING : 230 1 3429 375									THUNDERSTORMS : 1				HEAVY FOG : 0				SNOWFALL >= 1.0 INCH : 0							

HOURLY PRECIPITATION

(WATER EQUIVALENT IN INCHES)

HOUSTON, TX (KIAH)
OCTOBER 2012

WBAN # 12960

Date	FOR HOUR (LST) ENDING AT												Date	FOR HOUR (LST) ENDING AT												Date	Sum of Hourly Data	2400 LST Water Equiv.
	1	2	3	4	5	6	7	8	9	10	11	12		13	14	15	16	17	18	19	20	21	22	23	24			
01													01												01	0.00	0.00	
02													02				T	T							02	T	T	
03													03												03	0.00	0.00	
04													04												04	0.00	0.00	
05													05												05	0.00	0.00	
06													06												06	0.00	0.00	
07				T									07												07	T	T	
08				T									08												08	T	T	
09													09												09	0.00	0.00	
10													10												10	0.00	0.00	
11													11												11	0.00	0.00	
12													12												12	0.00	0.00	
13													13												13	0.00	0.00	
14													14	T	T									14	0.37	0.37		
15													15								0.20	0.06	0.07	15	0.00	0.00		
16													16	T	0.06	0.09	0.08	0.05	0.08	0.09	0.10	0.03		16	0.58	0.58		
17													17											17	0.00	0.00		
18	T	T											18											18	T	T		
19													19											19	0.00	0.00		
20													20											20	0.00	0.00		
21													21											21	0.00	0.00		
22													22											22	0.00	0.00		
23													23											23	0.00	0.00		
24													24											24	0.00	0.00		
25													25											25	0.00	0.00		
26													26					T						26	0.05	0.05		
27													27											27	0.00	0.00		
28													28											28	0.00	0.00		
29													29											29	0.00	0.00		
30													30											30	0.00	0.00		
31													31											31	0.00	0.00		

* Indicates sum of Hourly and Daily disagree.

MAXIMUM SHORT DURATION PRECIPITATION (See Note)

Time Period (Minutes)	5	10	15	20	30	45	60	80	100	120	150	180
Precipitation (Inches)	0.13	0.19	0.20	0.20	0.20	0.20	0.22	0.26	0.26	0.32	0.33	0.33
Ending Date	14	14	14	14	14	14	14	14	14	14	14	14
Ending Time (Hr/Min)	2033	2035	2035	2035	2035	2035	2127	2130	2130	2223	2227	2227

Note : The hourly and daily precipitation totals are printed in the last 2 columns and hi-lighted in red when they disagree. NWS does not edit ASOS hourly values but may edit daily and monthly totals. Hourly, daily, and monthly totals are printed as reported by the ASOS site.

Date and time are not entered for TRACE amounts.

OBSERVATIONS AT 3-HOURLY INTERVALS

HOUSTON, TX
OCTOBER 2012

KIAH

WBAN # 12960

HOUR (LST)	SKY COVER	CEILING 100's of FT.	SATELLITE			WEATHER	TEMPERATURE °F			WIND SPEED (MPH) DIRECTION Tens of Deg	PRESSURE (INCHES, HG)		HOUR (LST)	SKY COVER	CEILING 100's of FT.	SATELLITE			WEATHER	TEMPERATURE °F			WIND SPEED (MPH) DIRECTION Tens of Deg	PRESSURE (INCHES, HG)											
			Observation Time (LST)	Eff Cld Amt Oktas	VISIBILITY (MILES)		DRY BULB	DEW POINT	WET BULB		RELATIVE HUMIDITY (PCT)	STATION				SEA LEVEL	Observation Time (LST)	Eff Cld Amt Oktas		VISIBILITY (MILES)	DRY BULB	DEW POINT		WET BULB	RELATIVE HUMIDITY (PCT)	STATION	SEA LEVEL								
																												STATION	SEA LEVEL	STATION	SEA LEVEL				
SUNRISE: 0615						OCT 01						SUNSET: 1808						SUNRISE: 0618						OCT 07						SUNSET: 1801					
03	SCT	036			10.00		62	56	59	81	8	29	29.68	29.78	03	OVC	014			10.00		56	50	53	80	17	01	30.02	30.13						
06	FEW	250			10.00		59	55	57	87	6	29	29.70	29.81	06	OVC	036			10.00		54	47	50	77	13	36	30.05	30.16						
09	CLR	NC			10.00		71	55	62	57	11	32	29.73	29.84	09	OVC	034			10.00		55	44	50	67	14	02	30.10	30.21						
12	CLR	NC			10.00		80	54	64	41	17	30	29.69	29.80	12	OVC	031			10.00		63	47	55	56	13	03	30.03	30.15						
15	SCT	250			10.00		84	52	65	33	17	34	29.65	29.76	15	BKN	250			10.00		67	49	57	53	11	35	29.98	30.10						
18	SCT	250			10.00		78	53	63	42	8	32	29.66	29.77	18	BKN	250			10.00		62	48	55	60	10	01	30.01	30.11						
21	SCT	250			10.00		71	56	62	59	5	27	29.71	29.82	21	OVC	031			10.00		59	47	53	65	14	01	30.06	30.18						
24	FEW	250			10.00		67	57	61	70	6	27	29.72	29.83	24	OVC	029			10.00		57	46	51	67	8	36	30.06	30.18						
SUNRISE: 0615						OCT 02						SUNSET: 1807						SUNRISE: 0619						OCT 08						SUNSET: 1759					
03	FEW	250			10.00		63	58	60	84	0	00	29.72	29.83	03	OVC	025			10.00		55	45	50	69	10	34	30.06	30.18						
06	SCT	250			10.00		64	56	59	75	5	30	29.76	29.87	06	OVC	030			10.00		54	47	50	77	9	01	30.09	30.20						
09	CLR	NC			10.00		73	57	63	57	9	02	29.81	29.92	09	BKN	055			10.00		57	49	53	75	11	01	30.11	30.23						
12	FEW	250			10.00		80	54	64	41	8	31	29.81	29.92	12	BKN	055			10.00		65	49	56	56	6	VR	30.08	30.19						
15	SCT	250			10.00		83	51	64	33	7	30	29.76	29.87	15	SCT	250			10.00		71	52	60	51	5	VR	30.00	30.11						
18	BKN	250			10.00		74	54	62	50	7	VR	29.79	29.89	18	FEW	250			10.00		65	53	58	65	5	08	29.98	30.09						
21	SCT	250			10.00		64	60	62	87	0	00	29.85	29.95	21	FEW	250			10.00		58	53	55	84	7	05	30.01	30.12						
24	BKN	250			10.00		61	60	60	97	0	00	29.86	29.97	24	BKN	250			10.00		57	53	55	87	11	10	29.98	30.09						
SUNRISE: 0616						OCT 03						SUNSET: 1806						SUNRISE: 0619						OCT 09						SUNSET: 1758					
03	FEW	250			10.00		61	59	60	93	0	00	29.85	29.96	03	OVC	040			10.00		59	52	55	78	0	00	29.97	30.08						
06	FEW	250			10.00		59	58	58	97	0	00	29.88	29.98	06	BKN	055			10.00		59	53	56	81	6	07	29.97	30.08						
09	CLR	NC			10.00		71	61	65	71	0	00	29.92	30.03	09	BKN	055			10.00		66	58	61	76	3	09	29.98	30.09						
12	FEW	050			10.00		81	57	66	44	8	18	29.92	30.03	12	SCT	055			10.00		79	65	70	62	7	VR	29.93	30.04						
15	SCT	070			10.00		84	54	66	36	3	VR	29.86	29.97	15	BKN	045			10.00		82	64	70	55	7	19	29.86	29.97						
18	FEW	055			10.00		77	65	69	67	11	12	29.89	29.99	18	BKN	048			10.00		77	66	70	69	11	16	29.85	29.96						
21	CLR	NC			10.00		72	65	68	79	7	16	29.94	30.05	21	FEW	250			10.00		74	67	69	79	7	17	29.88	29.99						
24	CLR	NC			10.00		69	64	66	84	3	15	29.95	30.06	24	CLR	NC			10.00		69	67	68	93	0	00	29.90	30.01						
SUNRISE: 0616						OCT 04						SUNSET: 1805						SUNRISE: 0620						OCT 10						SUNSET: 1757					
03	CLR	NC			10.00		64	62	63	93	0	00	29.96	30.06	03	CLR	NC			10.00		66	65	65	97	5	01	29.91	30.02						
06	CLR	NC			10.00		65	64	64	97	3	12	30.00	30.11	06	BKN	055			10.00		68	68	68	100	0	00	29.96	30.07						
09	CLR	NC			10.00		78	68	71	71	9	13	30.03	30.15	09	BKN	055			10.00		78	72	74	82	5	VR	30.01	30.12						
12	FEW	042			10.00		85	66	72	53	14	15	30.02	30.13	12	BKN	034			10.00		87	71	76	59	0	00	29.98	30.10						
15	FEW	045			10.00		86	66	73	51	13	13	29.98	30.09	15	SCT	038			10.00		89	68	75	50	9	13	29.91	30.02						
18	FEW	040			10.00		80	64	70	58	13	12	30.00	30.10	18	BKN	250			10.00		80	71	74	74	16	14	29.96	30.06						
21	FEW	250			10.00		74	68	70	82	6	15	30.01	30.11	21	BKN	250			10.00		76	70	72	82	3	16	29.98	30.09						
24	CLR	NC			10.00		70	67	68	90	0	00	30.00	30.11	24	FEW	250			10.00		72	68	69	87	3	16	29.98	30.09						
SUNRISE: 0617						OCT 05						SUNSET: 1804						SUNRISE: 0621						OCT 11						SUNSET: 1755					
03	CLR	NC			10.00		69	67	68	93	0	00	29.97	30.08	03	SCT	065			10.00		70	70	70	100	5	10	29.98	30.08						
06	CLR	NC			10.00		66	65	65	97	0	00	29.98	30.10	06	BKN	070			10.00		74	72	73	94	5	12	30.00	30.11						
09	FEW	025			10.00		79	67	71	67	7	16	30.01	30.12	09	SCT	250			10.00		81	70	74	69	15	16	30.05	30.16						
12	SCT	040			10.00		85	66	72	53	5	19	29.98	30.09	12	SCT	250			10.00		86	65	72	50	16	14	30.03	30.15						
15	SCT	050			10.00		86	65	72	50	6	17	29.89	30.00	15	SCT	250			10.00		86	65	72	50	14	12	30.00	30.11						
18	FEW	040			10.00		80	67	71	65	11	12	29.87	29.98	18	BKN	250			10.00		79	71	74	77	9	14	30.01	30.11						
21	CLR	NC			10.00		75	66	69	74	5	18	29.89	30.00	21	BKN	250			10.00		77	72	74	85	9	13	30.03	30.15						
24	CLR	NC			10.00		68	66	67	93	0	00	29.89	30.00	24	FEW	250			10.00		73	71	72	93	5	12	30.02	30.13						
SUNRISE: 0618						OCT 06						SUNSET: 1802						SUNRISE: 0621						OCT 12						SUNSET: 1754					
03	FEW	250			10.00		66	66	66	100	0	00	29.88	29.99	03	BKN	250			10.00		73	72	72	97	6	11	30.02	30.13						
06	FEW	250			9.00		65	65	65	100	0	00	29.91	30.02	06	FEW	250			7.00		71	70	70	97	0	00	30.03	30.15						
09	FEW	030			9.00		76	68	71	76	5	01	29.94	30.05	09	FEW	017			10.00		79	73	75	82	6	13	30.08	30.19						
12	SCT	041			10.00		81	65	71	58	0	00	29.91	30.02	12	BKN	045			10.00		85	66	72	53	8	14	30.05	30.16						
15	BKN	065			10.00		85	63	71	48	0	00	29.85	29.95	15	SCT	050			10.00		87	64	72	46	13	13	30.00	30.11						
18	BKN	050			10.00		72	66	68	82	18	01	29.87	29.98	18	FEW	050			10.00		80	67	71	65	9	13	30.01	30.12						
21	OVC	024			10.00		67	61	63	81	15	03	29.95	30.06	21	FEW	030			10.00		74	72	73	94	11	12	30.03	30.14						
24	OVC	015			10.00		61	55	58	81	13	02	29.98	30.09	24	FEW	020			10.00		74	73	73	97	5	16	30.00	30.11						

OBSERVATIONS AT 3-HOURLY INTERVALS

HOUSTON, TX
OCTOBER 2012

KIAH

WBAN # 12960

HOUR (LST)	SKY COVER	CEILING 100's of FT.	SATELLITE		WEATHER	TEMPERATURE °F			WIND SPEED (MPH) DIRECTION Tens of Deg	PRESSURE (INCHES, HG)		HOUR (LST)	SKY COVER	CEILING 100's of FT.	SATELLITE		WEATHER	TEMPERATURE °F			WIND SPEED (MPH) DIRECTION Tens of Deg	PRESSURE (INCHES, HG)																
			Observation Time (LST)	Eff Cld Amt Oktas		VISIBILITY (MILES)	DRY BULB	DEW POINT		WET BULB	RELATIVE HUMIDITY (PCT)				STATION	SEA LEVEL		Observation Time (LST)	Eff Cld Amt Oktas	VISIBILITY (MILES)		DRY BULB	DEW POINT	WET BULB	RELATIVE HUMIDITY (PCT)	STATION	SEA LEVEL											
																												Observation Time (LST)	Eff Cld Amt Oktas	VISIBILITY (MILES)	DRY BULB	DEW POINT	WET BULB	RELATIVE HUMIDITY (PCT)	STATION	SEA LEVEL		
SUNRISE: 0622						OCT 13						SUNSET: 1753						SUNRISE: 0626						OCT 19						SUNSET: 1747								
03	CLR	NC			10.00		74	70	71	87	5	18	29.96	30.06					55	52	53	90	0	00	29.85	29.96					52	49	50	90	3	31	29.88	29.98
06	SCT	250			9.00		69	69	69	100	0	00	29.98	30.08					52	49	50	90	3	31	29.88	29.98					67	48	57	51	0	00	29.92	30.03
09	SCT	250			10.00		80	72	75	77	11	16	29.98	30.10					67	48	57	51	0	00	29.92	30.03					80	32	56	17	7	36	29.90	30.01
12	BKN	250			10.00		87	68	74	53	15	16	29.95	30.06					80	32	56	17	7	36	29.90	30.01					15	16	29.95	30.06				
15	SCT	250			10.00		87	67	74	52	22	15	29.88	29.98					87	67	74	52	22	15	29.88	29.98					15	16	29.95	30.06				
18	BKN	250			10.00		81	69	73	67	15	17	29.87	29.98					87	67	74	52	22	15	29.88	29.98					15	16	29.95	30.06				
21	BKN	250			10.00		79	71	74	77	11	17	29.92	30.02					81	69	73	67	15	17	29.87	29.98					15	16	29.95	30.06				
24	SCT	250			10.00		77	72	74	85	8	17	29.88	29.98					79	71	74	77	11	17	29.92	30.02					15	16	29.95	30.06				
SUNRISE: 0623						OCT 14						SUNRISE: 0627						OCT 20						SUNSET: 1746														
03	SCT	130			10.00		77	72	74	85	10	18	29.85	29.96					54	51	52	90	0	00	29.82	29.93					54	51	52	90	0	00	29.82	29.93
06	BKN	100			10.00		76	71	73	85	0	00	29.91	30.01					53	50	51	90	0	00	29.82	29.93					53	50	51	90	0	00	29.82	29.93
09	BKN	150			10.00		77	72	74	85	6	09	29.98	30.09					70	61	65	73	6	15	29.86	29.96					70	61	65	73	6	15	29.86	29.96
12	BKN	070			10.00		82	71	74	69	6	22	29.93	30.04					83	55	66	38	14	16	29.83	29.93					83	55	66	38	14	16	29.83	29.93
15	SCT	250			10.00		83	72	75	70	8	18	29.88	29.99					83	62	70	49	15	16	29.76	29.86					83	62	70	49	15	16	29.76	29.86
18	SCT	250			10.00		81	70	74	69	0	00	29.86	29.97					78	65	70	64	11	16	29.75	29.86					78	65	70	64	11	16	29.75	29.86
21	OVC	050			10.00		76	73	74	90	3	22	29.90	30.01					75	65	69	71	6	17	29.79	29.90					75	65	69	71	6	17	29.79	29.90
24	BKN	042			10.00		73	70	71	90	3	34	29.93	30.04					74	67	69	79	7	17	29.79	29.90					74	67	69	79	7	17	29.79	29.90
SUNRISE: 0623						OCT 15						SUNRISE: 0627						OCT 21						SUNSET: 1745														
03	SCT	250			10.00		69	61	64	76	6	34	29.92	30.03					72	68	69	87	5	17	29.80	29.91					72	68	69	87	5	17	29.80	29.91
06	BKN	250			10.00		66	58	61	76	8	01	29.94	30.05					72	69	70	90	7	16	29.82	29.93					72	69	70	90	7	16	29.82	29.93
09	BKN	250			10.00		73	56	63	55	9	06	29.98	30.09					80	71	74	74	14	16	29.87	29.98					80	71	74	74	14	16	29.87	29.98
12	BKN	250			10.00		79	51	63	38	11	05	29.95	30.05					85	69	74	59	13	15	29.86	29.97					85	69	74	59	13	15	29.86	29.97
15	BKN	250			10.00		81	49	63	33	8	01	29.86	29.97					84	70	74	63	18	12	29.81	29.92					84	70	74	63	18	12	29.81	29.92
18	BKN	250			10.00		70	58	63	66	0	00	29.87	29.98					80	66	71	62	13	15	29.83	29.94					80	66	71	62	13	15	29.83	29.94
21	BKN	250			10.00		65	58	61	78	0	00	29.91	30.01					76	71	73	85	8	16	29.87	29.98					76	71	73	85	8	16	29.87	29.98
24	SCT	250			10.00		62	58	60	87	0	00	29.88	29.99					74	71	72	90	3	16	29.86	29.97					74	71	72	90	3	16	29.86	29.97
SUNRISE: 0624						OCT 16						SUNRISE: 0628						OCT 22						SUNSET: 1744														
03	FEW	250			10.00		59	57	58	93	0	00	29.83	29.94					70	68	69	93	6	13	29.86	29.97					70	68	69	93	6	13	29.86	29.97
06	SCT	150			10.00		60	57	58	90	0	00	29.83	29.94					70	69	69	97	6	11	29.88	29.99					70	69	69	97	6	11	29.88	29.99
09	BKN	250			10.00		69	62	65	79	3	12	29.84	29.94					79	70	73	74	15	15	29.92	30.02					79	70	73	74	15	15	29.92	30.02
12	BKN	250			10.00		78	63	68	60	0	00	29.81	29.91					84	68	73	59	16	15	29.91	30.01					84	68	73	59	16	15	29.91	30.01
15	OVC	095			4.00	RA BR	67	63	65	87	0	00	29.78	29.88					83	68	73	61	15	13	29.86	29.97					83	68	73	61	15	13	29.86	29.97
18	OVC	085			4.00	RA BR	64	63	63	97	0	00	29.77	29.88					77	69	72	76	13	13	29.87	29.98					77	69	72	76	13	13	29.87	29.98
21	BKN	100			10.00		63	62	62	97	9	16	29.72	29.83					74	69	71	84	9	14	29.89	30.00					74	69	71	84	9	14	29.89	30.00
24	BKN	250			8.00		64	63	63	97	9	17	29.68	29.79					70	69	69	97	3	12	29.87	29.98					70	69	69	97	3	12	29.87	29.98
SUNRISE: 0625						OCT 17						SUNRISE: 0629						OCT 23						SUNSET: 1743														
03	BKN	250			9.00		62	62	62	100	0	00	29.65	29.76					67	67	67	100	0	00	29.84	29.95					67	67	67	100	0	00	29.84	29.95
06	BKN	250			10.00		66	65	65	97	5	17	29.66	29.77					67	67	67	100	0	00	29.88	29.98					67	67	67	100	0	00	29.88	29.98
09	SCT	250			10.00		75	71	72	87	10	17	29.65	29.76					77	70	72	79	7	14	29.91	30.01					77	70	72	79	7	14	29.91	30.01
12	FEW	037			10.00		86	70	75	59	10	21	29.60	29.71					86	64	72	48	8	14	29.88	29.99					86	64	72	48	8	14	29.88	29.99
15	SCT	047			10.00		88	69	75	53	14	22	29.53	29.64					86	65	72	50	13	12	29.82	29.93					86	65	72	50	13	12	29.82	29.93
18	BKN	250			10.00		84	70	74	63	6	VR	29.52	29.63					78	67	71	69	11	14	29.84	29.94					78	67	71	69	11	14	29.84	29.94
21	SCT	250			10.00		79	73	75	82	5	19	29.61	29.72					73	69	70	87	6	16	29.89	30.00					73	69	70	87	6	16	29.89	30.00
24	SCT	250			10.00		77	75	76	94	8	35	29.64	29.74					72	70	71	93	3	16	29.86	29.97					72	70	71	93	3	16	29.86	29.97
SUNRISE: 0625						OCT 18						SUNRISE: 0629						OCT 24						SUNSET: 1742														
03	SCT	250			8.00		73	72	72	97	3	32	29.64	29.74					67	67	67	100	0	00	29.85	29.96					67	67	67	100	0	00	29.85	29.96
06	FE																																					

OBSERVATIONS AT 3-HOURLY INTERVALS

HOUSTON, TX
OCTOBER 2012

KIAH

WBAN # 12960

HOUR (LST)	SKY COVER	CEILING 100's of FT.	SATELLITE		WEATHER	TEMPERATURE °F			WIND		PRESSURE (INCHES, HG)						
			Observation Time (LST)	Eff Cld Amt Oktas		VISIBILITY (MILES)	DRY BULB	DEW POINT	WET BULB	RELATIVE HUMIDITY (PCT)	SPEED (MPH)	DIRECTION Tens of Deg	STATION	SEA LEVEL			
SUNRISE: 0630						OCT 25						SUNSET: 1741					
03	FEW	060				75	71	72	87	9	15	29.75	29.86				
06	SCT	055				76	71	73	85	7	17	29.76	29.87				
09	BKN	070				79	71	74	77	13	15	29.81	29.92				
12	BKN	065				86	67	73	53	7	16	29.78	29.89				
15	SCT	080				85	69	74	59	9	13	29.74	29.84				
18	SCT	075				80	70	73	72	10	12	29.76	29.87				
21	FEW	035				76	71	73	85	7	16	29.81	29.92				
24	FEW	080				71	70	70	97	0	00	29.82	29.93				
SUNRISE: 0631						OCT 26						SUNSET: 1740					
03	BKN	055				72	70	71	93	10	32	29.84	29.94				
06	OVC	012				61	56	58	84	9	34	29.90	30.01				
09	OVC	016				60	53	56	78	14	34	29.98	30.09				
12	OVC	012				56	51	53	83	16	34	30.01	30.11				
15	OVC	015				57	51	54	80	17	35	29.98	30.09				
18	OVC	012				55	50	52	83	18	36	30.02	30.13				
21	OVC	016				54	49	51	83	18	36	30.06	30.19				
24	OVC	021				54	47	50	77	13	36	30.08	30.19				
SUNRISE: 0631						OCT 27						SUNSET: 1739					
03	BKN	090				53	44	49	72	10	01	30.05	30.16				
06	SCT	085				49	41	45	74	10	34	30.08	30.19				
09	FEW	090				53	39	46	59	14	01	30.13	30.24				
12	CLR	NC				62	37	50	40	18	36	30.06	30.18				
15	CLR	NC				65	37	51	36	13	35	29.98	30.09				
18	CLR	NC				59	36	48	42	8	35	30.00	30.11				
21	CLR	NC				53	39	46	59	7	34	30.06	30.17				
24	SCT	110				50	39	45	66	7	35	30.08	30.19				
SUNRISE: 0632						OCT 28						SUNSET: 1738					
03	FEW	100				46	38	42	74	6	35	30.06	30.19				
06	FEW	100				43	37	40	79	0	00	30.10	30.21				
09	CLR	NC				54	37	46	53	6	01	30.14	30.25				
12	CLR	NC				64	31	49	29	10	36	30.11	30.23				
15	CLR	NC				68	27	49	21	13	35	30.03	30.14				
18	CLR	NC				61	30	47	31	7	35	30.05	30.16				
21	CLR	NC				54	34	45	47	3	34	30.10	30.21				
24	CLR	NC				46	34	41	63	0	00	30.11	30.23				
SUNRISE: 0633						OCT 29						SUNSET: 1737					
03	CLR	NC				43	30	38	60	0	00	30.13	30.24				
06	CLR	NC				45	32	40	60	0	00	30.14	30.26				
09	CLR	NC				55	37	47	51	5	03	30.19	30.30				
12	CLR	NC				66	30	49	26	5	VR	30.14	30.25				
15	FEW	250				70	28	51	21	0	00	30.05	30.16				
18	CLR	NC				63	31	48	30	3	01	30.03	30.15				
21	CLR	NC				52	37	45	57	0	00	30.06	30.16				
24	CLR	NC				47	39	43	74	0	00	30.03	30.15				
SUNRISE: 0634						OCT 30						SUNSET: 1736					
03	CLR	NC				45	40	43	83	0	00	30.03	30.13				
06	CLR	NC				42	39	41	89	3	01	30.01	30.12				
09	FEW	250				57	42	50	57	0	00	30.03	30.14				
12	FEW	250				71	44	57	38	6	VR	30.00	30.11				
15	FEW	055				75	45	59	34	0	00	29.90	30.01				
18	SCT	250				67	53	59	61	10	14	29.90	30.01				
21	CLR	NC				62	55	58	78	3	18	29.93	30.03				
24	CLR	NC				56	54	55	93	3	21	29.91	30.02				

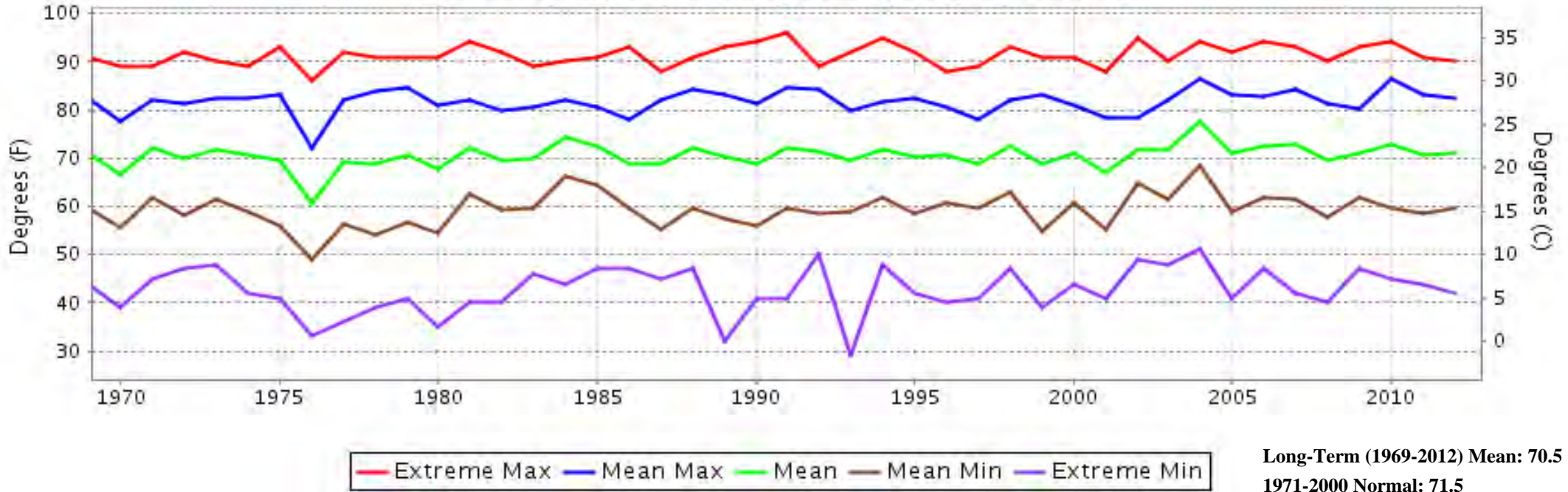
HOUR (LST)	SKY COVER	CEILING 100's of FT.	SATELLITE		WEATHER	TEMPERATURE °F			WIND		PRESSURE (INCHES, HG)						
			Observation Time (LST)	Eff Cld Amt Oktas		VISIBILITY (MILES)	DRY BULB	DEW POINT	WET BULB	RELATIVE HUMIDITY (PCT)	SPEED (MPH)	DIRECTION Tens of Deg	STATION	SEA LEVEL			
SUNRISE: 0634						OCT 31						SUNSET: 1736					
03	CLR	NC				54	53	53	96	0	00	29.90	30.00				
06	CLR	NC				53	53	53	100	0	00	29.90	30.01				
09	CLR	NC				68	60	63	76	0	00	29.95	30.06				
12	FEW	038				80	62	69	54	6	26	29.92	30.03				
15	FEW	047				83	59	68	44	7	26	29.85	29.95				
18	FEW	065				75	59	65	58	0	00	29.85	29.96				
21	CLR	NC				67	61	63	81	3	18	29.90	30.00				
24	CLR	NC				68	64	66	87	5	24	29.92	30.02				

3-HOURLY OBSERVATION NOTES
 Sky Cover is the amount of the sky obscured. CLR or SKC = 0, FEW = 1/8-2/8, SCT = 3/8-4/8, BKN = 5/8-7/8, OVC = 8/8, W = Vertical Visibility = 8/8
 Ceiling is reported in hundreds of feet above ground level for clouds at or below 12,000 feet. NC = No Ceiling detected.
 & = Original observation contained additional weather elements.
 See page 3 for additional notes.

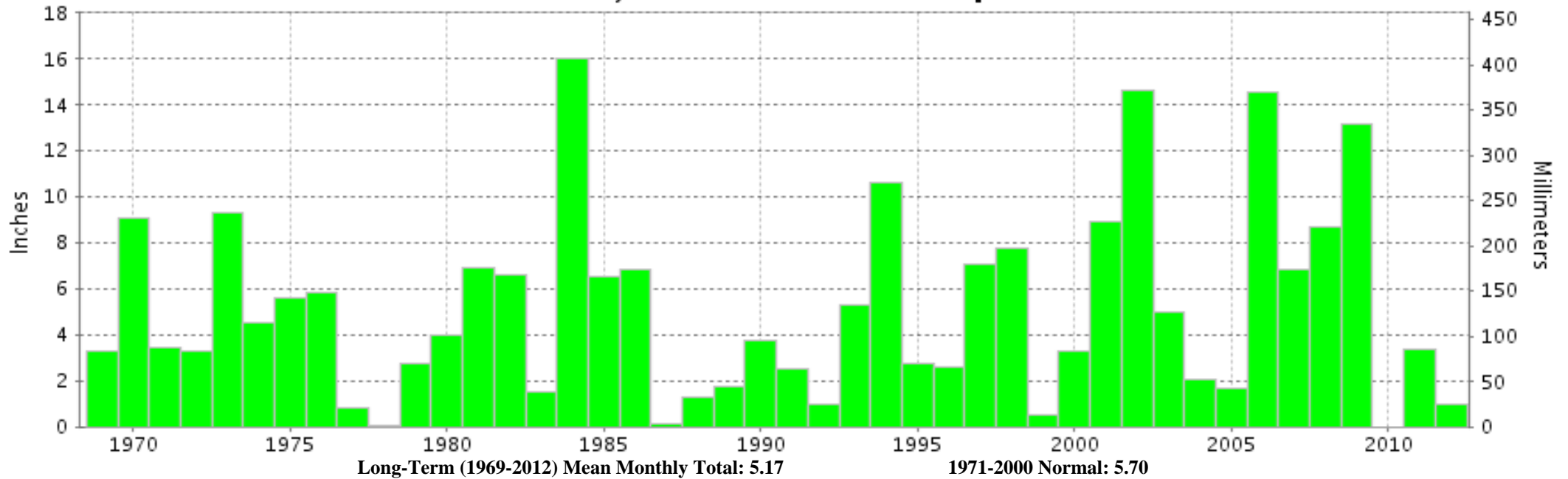
SUMMARY BY HOUR

HOUR (LST)	AVERAGES										RESULTANT WIND (MPH)	
	CEILOMETER	EFF CLD AMT	DRY BULB	DEW POINT	WET BULB	RELATIVE HUMIDITY	PRESSURE (Inches, HG)		VISIBILITY (Miles)	WIND SPEED (MPH)	SPEED	DIRECTION
							STATION	SEA LEVEL				
01			65	60	62	86	29.90	30.01	9.97	4	1	09
02			64	59	61	87	29.90	30.00	9.97	4	2	09
03			63	59	61	88	29.89	30.00	9.81	4	0	12
04			63	59	60	88	29.90	30.00	9.87	4	0	10
05			62	58	60	88	29.91	30.01	9.84	4	1	10
06			62	58	60	88	29.92	30.03	9.77	4	1	10
07			62	59	60	88	29.93	30.04	9.58	4	1	09
08			66	60	63	81	29.94	30.05	9.90	6	2	09
09			70	60	65	71	29.96	30.06	9.97	8	3	09
10			74	59	65	61	29.96	30.07	9.87	9	3	09
11			77	58	66	55	29.95	30.06	10.00	9	3	09
12			78	57	66	50	29.93	30.04	10.00	9	1	09
13			80	57	66	48	29.90	30.01	10.00	9	1	10
14			80	57	66	47	29.88	29.98	9.90	9	2	09
15			80	57	66	48	29.87	29.97	9.81	10	3	09
16			79	57	66	50	29.86	29.97	9.84	11	4	09
17			77	58	66	54	29.86	29.97	9.87	10	3	09
18			73	59	65	63	29.87	29.98	9.81	9	5	09
19			71	60	65	70	29.89	30.00	9.84	8	3	09
20			70	61	65	74	29.90	30.01	9.84	7	3	09
21			68	61	64	78	29.91	30.02	10.00	6	2	09
22			67	61	64	81	29.92	30.02	9.97	5	1	09
23			66	61	63	83	29.91	30.02	9.90	5	2	09
24			65	61	63	85	29.91	30.02	9.94	4	1	10

HOUSTON, TX OCTOBER Temperatures



HOUSTON, TX OCTOBER Precipitation





**OCTOBER 2012
HOUSTON, TX**

**LOCAL CLIMATOLOGICAL DATA
NOAA, National Climatic Data Center**

I certify that this is an official publication of the National Oceanic and Atmospheric Administration (NOAA). It is compiled using information from weather observing sites operated by NOAA-National Weather Service / Department Of Transportation-Federal Aviation Administration and received at the National Climatic Data Center (NCDC), Asheville, North Carolina 28801.

A handwritten signature in black ink, appearing to read "Thomas R. Karl".

DIRECTOR

NCDC now offers free online access to the **Edited Local Climatological Data Publication**. Go to : www.ncdc.noaa.gov and choose Most Popular.

We welcome your questions or comments, please contact us at:
(828) 271-4800, option 2
Fax Number : 828-271-4876
TDD : (828) 271-4010
or Email : ncdc.orders@noaa.gov

NOAA\National Climatic Data Center
Attn: User Engagement & Services Branch
151 Patton Avenue
Asheville, NC 28801-5001