



# OCTOBER 2016 LOCAL CLIMATOLOGICAL DATA

NOAA, National Centers for Environmental Information

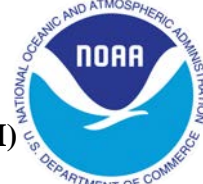
HOUSTON, TX

G BUSH INTERCONTINENTAL AP/HOUSTON AP (KIAH)

Lat:29° 58'N Long: 95° 21'W Elev (Ground) 95 Feet

Time Zone : CENTRAL

WBAN: 12960 ISSN#: 0198-5094



OCTOBER 2016  
HOUSTON, TX

Date 1	Temperature °F						Deg Days BASE 65°		WEATHER 10	SNOW/ICE ON GND(IN)		PRECIPITATION ON GND(IN)		PRESSURE (INCHES OF HG)		WIND SPEED = MPH DIR = TENS OF DEGREES								Date 24
	MAXIMUM 2	MINIMUM 3	AVERAGE 4	DEP FROM NORMAL 5	AVERAGE DEW PT 6	AVERAGE WET BULB 7	HEATING 8	COOLING 9		0600 LST 11	1200 LST 12	2400 LST 13	2400 LST 14	AVERAGE STATION 15	AVERAGE SEA LEVEL 16	RESULTANT SPEED 17	RES DIR 18	AVERAGE SPEED 19	MAXIMUM					
																			3-SEC		2-MIN			
									DEPTH	WATER- EQUIV	SNOW- FALL	WATER EQUIV			SPEED	DIR	SPEED	SPEED	DIR	SPEED	DIR			
01	82	60	71	-4	60	64	0	6	RA	0		0.0	T	29.93	30.05	2.2	04	3.1	12	03	10	03	01	
02	86	65	76	1	61	66	0	11		0		0.0	0.00	29.88	30.01	3.2	04	4.4	17	09	12	11	02	
03	87	62	75	0	62	67	0	10		0		0.0	0.00	29.78	29.92	3.7	08	5.8	18	07	15	06	03	
04	90	66	78	4	69	72	0	13		0		0.0	0.00	29.71	29.83	7.0	13	8.1	23	12	20	12	04	
05	91	73	82	8	73	75	0	17	RA	0		0.0	T	29.78	29.89	7.2	12	7.6			17	11	05	
06	90	72	81	8	73	75	0	16	RA	0		0.0	0.01	29.80	29.91	7.3	12	7.9	22	13	16	15	06	
07	91	70	81	8	68	72	0	16	MIFG BCFG BR	0		0.0	0.00	29.90	29.99	6.8	01	7.8	25	01	20	03	07	
08	89	67	78	5	63	68	0	13		0		0.0	0.00	30.01	30.11	8.5	01	9.0	25	03	18	03	08	
09	82	59	71	-2	49	58	0	6		0		0.0	0.00	30.08	30.18	7.3	03	7.8	22	02	15	03	09	
10	85	53	69	-3	54	60	0	4		0		0.0	0.00	30.02	30.14	1.5	09	3.4	17	11	13	12	10	
11	86	65	76	4	68	70	0	11	RA BR	0		0.0	0.11	29.98	30.10	5.9	13	8.1	28	15	23	15	11	
12	89	69	79	7	70	73	0	14		0		0.0	0.00	29.95	30.06	7.5	14	7.7	23	14	18	14	12	
13	90	70	80	9	69	72	0	15	MIFG BCFG	0		0.0	0.00	29.98	30.09	4.1	14	4.5	19	14	16	13	13	
14	87	69	78	7	69	71	0	13	RA	0		0.0	0.02	29.96	30.08	3.8	11	5.8	17	15	15	15	14	
15	90	68	79	8	70	72	0	14	MIFG	0		0.0	0.00	29.92	30.04	5.1	14	6.8	23	13	17	14	15	
16	91	69	80	10	71	74	0	15	MIFG	0		0.0	0.00	29.86	29.98	5.1	15	6.0			14	11	16	
17	91	70	81	11	71	74	0	16	MIFG	0		0.0	0.00	29.75	29.88	6.7	17	6.9	21	16	16	16	17	
18	93*	70	82*	12	71	74	0	17	MIFG	0		0.0	0.00	29.78	29.89	5.7	17	6.3	21	21	16	15	18	
19	89	72	81	11	72	74	0	16	TS RA MIFG BCFG	0		0.0	T	29.83	29.95	5.9	13	6.5	24	14	21	14	19	
20	88	66	77	8	66	69	0	12	RA MIFG	0		0.0	T	29.96	30.04	7.3	36	8.0	28*	35	24*	34	20	
21	76	51	64	-5	49	56	1	0		0		0.0	0.00	30.06	30.17	8.1	01	8.9	27	05	18	03	21	
22	77	48*	63*	-5	46	54	2	0		0		0.0	0.00	30.06	30.17	3.2	13	4.7	15	10	13	09	22	
23	80	51	66	-2	56	60	0	1		0		0.0	0.00	30.08	30.19	5.3	13	5.8	21	14	17	14	23	
24	85	58	72	4	61	64	0	7		0		0.0	0.00	30.11	30.22	3.9	12	5.1	15	13	13	13	24	
25	84	59	72	5	63	66	0	7	MIFG BCFG BR	0		0.0	0.00	30.04	30.16	3.7	11	5.5	18	12	13	13	25	
26	85	60	73	6	60	64	0	8	MIFG	0		0.0	0.00	30.02	30.14	3.1	12	3.8	16	13	13	13	26	
27	85	60	73	6	60	65	0	8	MIFG BCFG	0		0.0	0.00	30.06	30.17	3.3	08	4.0	17	09	14	11	27	
28	87	61	74	8	61	65	0	9	MIFG	0		0.0	0.00	30.04	30.16	3.1	10	4.7	26	14	22	14	28	
29	87	63	75	9	65	68	0	10	MIFG BR	0		0.0	0.00	30.01	30.13	4.4	12	6.3	22	14	16	13	29	
30	87	60	74	8	63	66	0	9	FG+ FG MIFG BR	0		0.0	0.00	30.01	30.13	2.5	09	3.9	13	14	10	13	30	
31	85	57	71	5	64	66	0	6	FG+ MIFG BR	0		0.0	0.00	29.92	30.05	6.2	13	7.1	24	14	16	13	31	
86.6		63.3	75.0	Σ	63.8	67.5	0.1	10.3	< MONTHLY AVERAGES   TOTALS >		0.0	0.14	29.95	30.06	3.2	10	6.2	< MONTHLY AVERAGES						
4.6	2.4	3.5	-----DEPARTURE FROM NORMAL -----								-5.56		SUNSHINE, CLOUD, & VISIBILITY TABLES ON PAGE 3											
<b>DEGREE DAYS</b>								GREATEST 24-HR PRECIPITATION : 0.11 DATE : 11				SEA LEVEL PRESSURE				DATE TIME								
MONTHLY				SEASON TO DATE				GREATEST 24-HR SNOWFALL : 0.0 DATE :				MAXIMUM : 30.28				24 1045								
TOTAL DEPARTURE				TOTAL DEPARTURE				GREATEST SNOW DEPTH : 0 DATE :				MINIMUM : 29.78				04 1653								
HEATING :		3 -26		3 -27		NUMBER OF ->		MAXIMUM TEMP >= 90 : 9		MINIMUM TEMP <= 32 : 0		PRECIPITATION >= 0.01 INCH: 3												
COOLING :		320 -91		3264 210		MAXIMUM TEMP <= 32 : 0		MINIMUM TEMP <= 0 : 0		PRECIPITATION >= 0.10 INCH: 1														
						THUNDERSTORMS : 1		HEAVY FOG : 2		SNOWFALL >= 1.0 INCH : 0														

# HOURLY PRECIPITATION

(WATER EQUIVALENT IN INCHES)

HOUSTON, TX (KIAH)  
OCTOBER 2016

WBAN # 12960

Date	FOR HOUR (LST) ENDING AT												Date	FOR HOUR (LST) ENDING AT												Date	Sum of Hourly Data	2400 LST Water Equiv.
	1	2	3	4	5	6	7	8	9	10	11	12		13	14	15	16	17	18	19	20	21	22	23	24			
01													01												01	T	T	
02													02												02	0.00	0.00	
03													03												03	0.00	0.00	
04													04												04	0.00	0.00	
05				T									05												05	T	T	
06						0.01	T						06												06	0.01	0.01	
07													07												07	0.00	0.00	
08													08												08	0.00	0.00	
09													09												09	0.00	0.00	
10													10												10	0.00	0.00	
11													11		T	T	T								11	0.11	0.11	
12													12												12	0.00	0.00	
13													13												13	0.00	0.00	
14												T	14	0.02	T										14	0.02	0.02	
15													15												15	0.00	0.00	
16													16												16	0.00	0.00	
17													17												17	0.00	0.00	
18													18												18	0.00	0.00	
19													19		T	T	T								19	T	T	
20													20			T									20	T	T	
21													21												21	0.00	0.00	
22													22												22	0.00	0.00	
23													23												23	0.00	0.00	
24													24												24	0.00	0.00	
25													25												25	0.00	0.00	
26													26												26	0.00	0.00	
27													27												27	0.00	0.00	
28													28												28	0.00	0.00	
29													29												29	0.00	0.00	
30													30												30	0.00	0.00	
31													31												31	0.00	0.00	

\* Indicates sum of Hourly and Daily disagree.

### MAXIMUM SHORT DURATION PRECIPITATION (See Note)

Time Period (Minutes)	5	10	15	20	30	45	60	80	100	120	150	180
Precipitation (Inches)	0.08	0.09	0.10	0.10	0.11	0.11	0.11	0.11	0.11	0.11	0.11	0.11
Ending Date	11	11	11	11	11	11	11	11	11	11	11	11
Ending Time (Hr/Min)	0648	0648	0650	0648	0650	0650	0650	0650	0650	0650	0650	0650

Note : The hourly and daily precipitation totals are printed in the last 2 columns and hi-lighted in red when they disagree. NWS does not edit ASOS hourly values but may edit daily and monthly totals. Hourly, daily, and monthly totals are printed as reported by the ASOS site.

Date and time are not entered for TRACE amounts.

# REFERENCE NOTES & SUPPLEMENTAL SUMMARIES

\* = Extreme for the month (last occurrence if more than one).

T = Trace precipitation amount.

+ = also occurs on earlier date.

FG+ = Heavy fog, visibility .25 miles or less.

BLANK entries denote missing or unreported data.

Resultant wind is the vector sum of the wind speeds and directions divided by the number of observations.

Wind direction is recorded in tens of degrees (2 digits) clockwise from true north. '00' = calm, 'VR' = variable.

Precipitation is for the 24-hour period ending at the time indicated in the column heading.

Ceilometer (30-second) data are used to derive cloudiness at or below 12,000 feet. This cloudiness is the mean cloud cover detected during sunrise to sunset (SR-SS), or midnight to midnight (MN-MN).

## WEATHER NOTATIONS

QUALIFIER	WEATHER PHENOMENA		
DESCRIPTOR	PRECIPITATION	OBSCURATION	OTHER
BC Patches	DZ Drizzle	BR Mist	DS Duststorm
BL Blowing	GR Hail	DU Widespread Dust	FC Funnel Cloud
DR Low Drifting	GS Small Hail and/or Snow Pellets	FG Fog	+FC Tornado Waterspout
FZ Freezing	IC Ice Crystals	FU Smoke	PO Well-Developed Dust/Sand Whirls
MI Shallow	PL Ice Pellets	HZ Haze	
PR Partial	RA Rain	PY Spray	SQ Squalls
SH Shower(s)	SG Snow Grains	SA Sand	SS Sandstorm
TS Thunderstorm	SN Snow	VA Volcanic Ash	
VC In the Vicinity	UP Unkown Precipitation		GL Glaze

Intensity (as indicated on pages 4 to 6):  
'+' = Heavy    '' = Moderate    '-' = Light

# HOUSTON, TX OCTOBER 2016

Sky Condition is based on the sum (not to exceed 8) of the sunrise to sunset cloud cover below and above 12,000 feet.

Clear = 0-2 oktas, Partly Cloudy = 3-6 oktas, Cloudy = 7-8 oktas.

A Heating (Cooling) Degree Day is the difference between the average daily temperature and 65 degrees F. The HDD season begins July 1, the CDD season begins January 1.

Snow Depth, Snowfall, and Sunshine data may come from nearby sites that the National Weather Service deems Climatologically representative of this site.

NORMALS ARE FOR THE YEARS 1981-2010

ADDITIONAL NOTES & ERRATA:

Date	VISIBILITY (MILES)	
	MINIMUM	MAXIMUM
01	8.00	10.00
02	9.00	10.00
03	9.00	10.00
04	8.00	10.00
05	8.00	10.00
06	8.00	10.00
07	5.00	10.00
08	8.00	10.00
09	10.00	10.00
10	10.00	10.00
11	2.50	10.00
12	10.00	10.00
13	7.00	10.00
14	7.00	10.00
15	8.00	10.00
16	8.00	10.00
17	8.00	10.00
18	9.00	10.00
19	7.00	10.00
20	8.00	10.00
21	10.00	10.00
22	10.00	10.00
23	10.00	10.00
24	10.00	10.00
25	7.00	10.00
26	10.00	10.00
27	6.00	10.00
28	7.00	10.00
29	3.00	10.00
30	0.25	10.00
31	0.00	10.00
<b>AVGS</b>	7.44	10.00
<b>MINIMUM VISIBILITY (MILES)</b>		
<= .25	<= 3.0	>= 7.0
2	4	25



OBSERVATIONS AT 3-HOURLY INTERVALS

HOUSTON, TX  
OCTOBER 2016

KIAH

WBAN # 12960

Table with 18 columns: HOUR (LST), SKY COVER, CEILING 100's of FT., VISIBILITY (MILES), WEATHER, TEMPERATURE (F) (DRY BULB, DEW POINT, WET BULB), WIND (SPEED MPH, DIRECTION Tens of Deg), PRESSURE (INCHES, HG) (STATION, SEA LEVEL). The table contains hourly data for October 13, 14, 15, 16, 17, and 18.

OBSERVATIONS AT 3-HOURLY INTERVALS

HOUSTON, TX  
OCTOBER 2016

KIAH

WBAN # 12960

Table with columns: HOUR (LST), SKY COVER, CEILING 100's of FT., VISIBILITY (MILES), WEATHER, TEMPERATURE °F (DRY BULB, DEW POINT, WET BULB), RELATIVE HUMIDITY (PCT), WIND (SPEED (MPH), DIRECTION Tens of Deg), PRESSURE (INCHES, HG) (STATION, SEA LEVEL). Rows include dates OCT 25, OCT 26, OCT 27, OCT 28, OCT 29, and OCT 30.

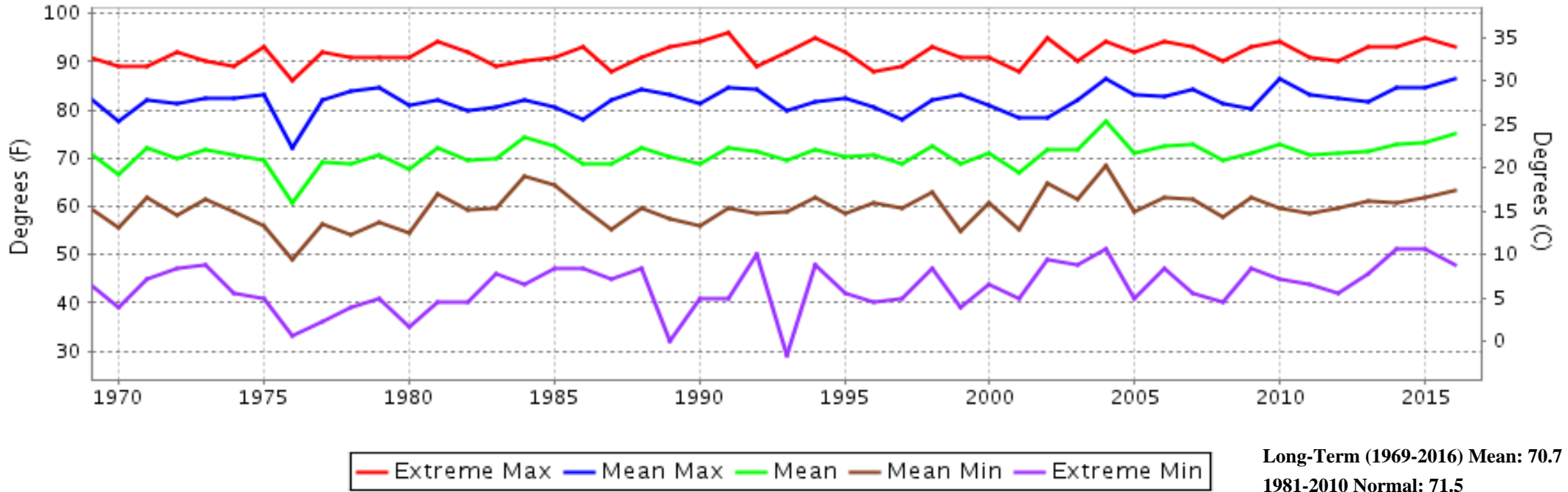
Table with columns: HOUR (LST), SKY COVER, CEILING 100's of FT., VISIBILITY (MILES), WEATHER, TEMPERATURE °F (DRY BULB, DEW POINT, WET BULB), RELATIVE HUMIDITY (PCT), WIND (SPEED (MPH), DIRECTION Tens of Deg), PRESSURE (INCHES, HG) (STATION, SEA LEVEL). Rows include dates OCT 31 and OCT 31.

3-HOURLY OBSERVATION NOTES
Sky Cover is the amount of the sky obscured. CLR or SKC = 0, FEW = 1/8-2/8, SCT = 3/8-4/8, BKN = 5/8-7/8, OVC = 8/8, W = Vertical Visibility = 8/8
Ceiling is reported in hundreds of feet above ground level for clouds at or below 12,000 feet. NC = No Ceiling detected.
& = Original observation contained additional weather elements. See page 3 for additional notes.

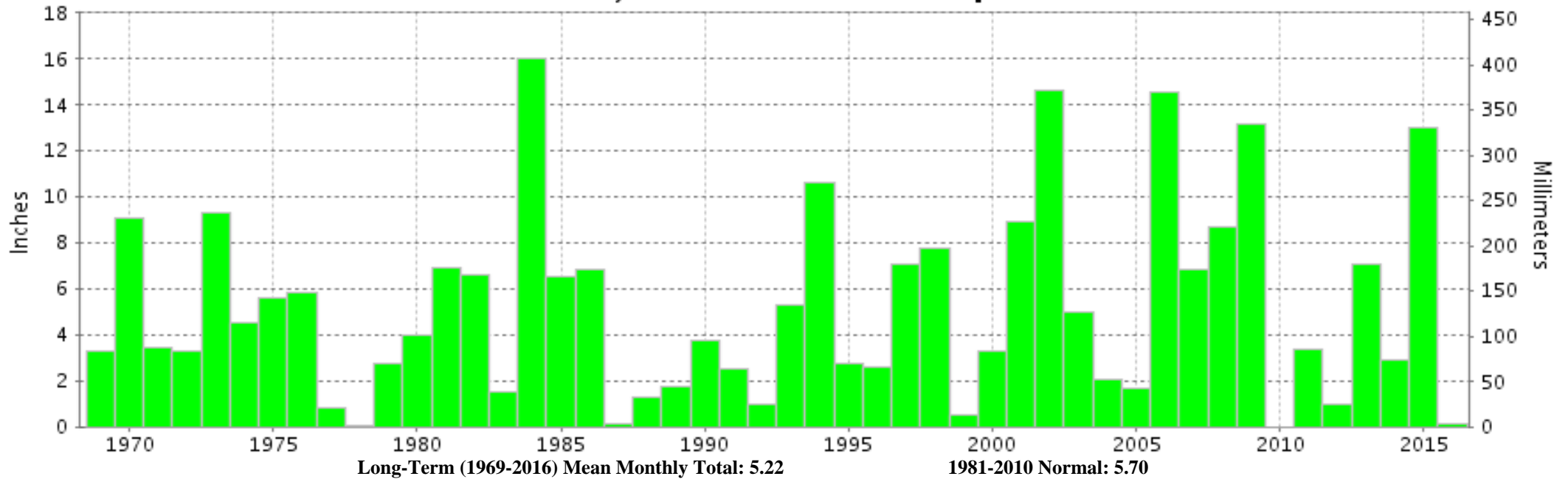
SUMMARY BY HOUR

Table with columns: HOUR (LST), DRY BULB, DEW POINT, WET BULB, RELATIVE HUMIDITY, PRESSURE (Inches, HG) (STATION, SEA LEVEL), VISIBILITY (Miles), WIND SPEED (MPH), RESULTANT WIND (MPH) (SPEED, DIRECTION). Rows show hourly averages from 01 to 24.

## HOUSTON, TX OCTOBER Temperatures



## HOUSTON, TX OCTOBER Precipitation





OCTOBER 2016

HOUSTON, TX

## LOCAL CLIMATOLOGICAL DATA

### NOAA, National Centers for Environmental Information

*I certify that this is an official publication of the National Oceanic and Atmospheric Administration (NOAA). It is compiled using information from weather observing sites operated by NOAA-National Weather Service / Department Of Transportation-Federal Aviation Administration and received at the National Centers for Environmental Information (NCEI), Asheville, North Carolina 28801.*

A handwritten signature in black ink that reads "Margarita Jee SS".

**DIRECTOR (ACTING)**

NCEI now offers free online access to the **Edited Local Climatological Data Publication**. Go to : [www.ncdc.noaa.gov](http://www.ncdc.noaa.gov) and choose Most Popular.

We welcome your questions or comments, please contact us at:  
(828) 271-4800, option 2  
Fax Number : 828-271-4876  
TDD : (828) 271-4010  
or Email : [ncdc.orders@noaa.gov](mailto:ncdc.orders@noaa.gov)

NOAA\National Centers for Environmental Information  
Attn: User Engagement & Services Branch  
151 Patton Avenue  
Asheville, NC 28801-5001