



APRIL 2017 LOCAL CLIMATOLOGICAL DATA

NOAA, National Centers for Environmental Information

HOUSTON, TX

G BUSH INTERCONTINENTAL AP/HOUSTON AP (KIAH)

Lat:29° 58'N Long: 95° 21'W Elev (Ground) 95 Feet

Time Zone : CENTRAL

WBAN: 12960 ISSN#: 0198-5094



Date 1	Temperature °F						Deg Days BASE 65°		WEATHER 10	SNOW/ICE ON GND(IN)		PRECIPITATION ON GND(IN)		PRESSURE (INCHES OF HG)		WIND SPEED = MPH DIR = TENS OF DEGREES								Date 24
	MAXIMUM 2	MINIMUM 3	AVERAGE 4	DEP FROM NORMAL 5	AVERAGE DEW PT 6	AVERAGE WET BULB 7	HEATING 8	COOLING 9		0600 LST 11	1200 LST 12	2400 LST 13	2400 LST 14	AVERAGE STATION 15	AVERAGE SEA LEVEL 16	RESULTANT SPEED 17	RES DIR 18	AVERAGE SPEED 19	MAXIMUM					
																			3-SEC		2-MIN			
01	79	61	70	4	63	66	0	5		0		0.0	0.00	29.77	29.89	13.3	12	13.0	32	13	26	14	01	
02	83	68	76	10	67	69	0	11	TS TSRA RA BR	0		0.0	0.09	29.59	29.71	6.0	14	11.2	39	34	26	14	02	
03	86	57	72	6	53	61	0	7		0		0.0	0.00	29.62	29.74	6.2	24	7.3	23	30	17	29	03	
04	88	59	74	8	60	66	0	9	MIFG	0		0.0	0.00	29.62	29.72	8.5	16	7.6	30	14	22	15	04	
05	75	54	65	-2	47	56	0	0	RA BR HZ	0		0.0	T	29.91	29.99	11.9	32	12.8	33	34	25	32	05	
06	79	50*	65	-2	42	53	0	0		0		0.0	0.00	30.09	30.18	1.2	31	3.4	17	34	14	34	06	
07	81	51	66	-1	48	56	0	1		0		0.0	0.00	30.04	30.18	3.5	16	4.4	21	13	16	13	07	
08	81	53	67	0	54	60	0	2		0		0.0	0.00	29.91	30.05	9.1	17	9.3	34	16	24	16	08	
09	83	65	74	7	60	65	0	9		0		0.0	0.00	29.85	29.97	12.2	16	12.8	31	15	24	14	09	
10	80	72	76	9	67	70	0	11	RA	0		0.0	0.14	29.92	30.02	11.7	14	12.5	27	15	24	14	10	
11	76	61	69	2	64	65	0	4	TS TSRA RA MIFG BR	0		0.0	0.73	30.03	30.12	5.7	10	8.5	39	01	33*	01	11	
12	80	60	70	3	65	66	0	5	RA MIFG BR	0		0.0	0.19	30.04	30.15	3.8	09	5.9	21	14	18	14	12	
13	82	63	73	5	62	66	0	8	FG+ MIFG BCFG BR	0		0.0	0.00	30.03	30.15	7.4	13	8.2	26	14	22	14	13	
14	82	61	72	4	63	66	0	7	BR	0		0.0	0.00	29.96	30.09	8.0	13	8.3	27	12	20	12	14	
15	84	63	74	6	64	67	0	9	FG+ MIFG	0		0.0	0.00	29.94	30.06	5.9	15	7.2	24	16	20	15	15	
16	85	66	76	8	67	70	0	11	RA MIFG BR	0		0.0	T	29.92	30.04	8.2	16	8.6	25	17	22	13	16	
17	83	66	75	6	66	68	0	10	TS TSRA RA MIFG BR	0		0.0	0.20	29.90	30.01	3.2	13	6.5	26	13	20	13	17	
18	77	67	72	3	66	68	0	7	RA BR	0		0.0	0.31	29.90	30.02	7.0	11	8.1	20	13	17	12	18	
19	83	66	75	6	68	70	0	10	RA MIFG BR	0		0.0	0.01	29.93	30.04	8.7	14	9.7	30	14	25	14	19	
20	86	68	77	8	67	70	0	12	BR	0		0.0	0.00	29.88	30.01	7.5	15	7.9	23	12	18	14	20	
21	88	67	78	8	68	71	0	13	MIFG BR	0		0.0	0.00	29.75	29.89	8.3	18	8.5	26	15	20	16	21	
22	84	60	72	2	61	65	0	7	RA	0		0.0	T	29.85	29.95	9.4	33	11.6	31	36	24	34	22	
23	74	53	64*	-6	47	55	1	0		0		0.0	0.00	29.91	30.03	10.5	35	11.0	27	34	21	36	23	
24	81	52	67	-3	50	58	0	2		0		0.0	0.00	29.74	29.89	3.4	16	4.3	21	19	15	13	24	
25	85	65	75	4	64	68	0	10	RA	0		0.0	T	29.52	29.66	12.3	17	12.5	31	16	22	16	25	
26	91*	63	77	6	65	69	0	12	RA HZ	0		0.0	T	29.49	29.59	3.7	19	12.8	32	34	26	33	26	
27	81	53	67	-4	54	60	0	2		0		0.0	0.00	29.63	29.75	6.6	12	9.2	22	15	18	15	27	
28	90	74	82*	11	71	74	0	17	HZ	0		0.0	0.00	29.55	29.67	16.3	16	16.5	33	14	26	15	28	
29	85	63	74	3	73	75	0	9	RA BR HZ	0		0.0	0.01	29.57	29.66	16.8	16	18.6	43*	15	29	32	29	
30	76	56	66	-5	47	56	0	1		0		0.0	0.00	29.80	29.89	7.9	30	8.7	29	30	22	32	30	

82.3	61.2	71.8	☼	60.4	65.0	0.0	7.0	< MONTHLY AVERAGES TOTALS >	0.0	1.68	29.82	29.94	4.8	15	9.6	< MONTHLY AVERAGES			
2.7	1.8	2.3		-----DEPARTURE FROM NORMAL -----						-1.63	SUNSHINE, CLOUD, & VISIBILITY TABLES ON PAGE 3								

DEGREE DAYS				GREATEST 24-HR PRECIPITATION : 0.73 DATE : 11				SEA LEVEL PRESSURE					
MONTHLY				GREATEST 24-HR SNOWFALL : 0.0 DATE :				MAXIMUM : 30.28 DATE 06 TIME 1000					
TOTAL DEPARTURE				GREATEST SNOW DEPTH : 0 DATE :				MINIMUM : 29.50 DATE 26 TIME 1620					
SEASON TO DATE				NUMBER OF -> DAYS WITH				MAXIMUM TEMP >= 90 : 2		MINIMUM TEMP <= 32 : 0		PRECIPITATION >= 0.01 INCH: 8	
HEATING :		1 -36		653		-713		MAXIMUM TEMP <= 32 : 0		MINIMUM TEMP <= 0 : 0		PRECIPITATION >= 0.10 INCH: 5	
COOLING :		211 -39		548		267		THUNDERSTORMS : 3		HEAVY FOG : 2		SNOWFALL >= 1.0 INCH : 0	

APRIL 2017
HOUSTON, TX

HOURLY PRECIPITATION

(WATER EQUIVALENT IN INCHES)

HOUSTON, TX (KIAH)
APRIL 2017

WBAN # 12960

Date	FOR HOUR (LST) ENDING AT												Date	FOR HOUR (LST) ENDING AT												Date	Sum of Hourly Data	2400 LST Water Equiv.
	1	2	3	4	5	6	7	8	9	10	11	12		13	14	15	16	17	18	19	20	21	22	23	24			
01													01												01	0.00	0.00	
02				0.02	0.05	T	0.01	T		T	0.01		02	T											02	0.09	0.09	
03													03												03	0.00	0.00	
04													04												04	0.00	0.00	
05			T										05												05	T	T	
06													06												06	0.00	0.00	
07													07												07	0.00	0.00	
08													08												08	0.00	0.00	
09													09												09	0.00	0.00	
10												0.11	10	0.03	T								T		10	0.14	0.14	
11													11	0.13	0.04	0.18	0.16	0.03							11	0.73	0.73	
12													12		T	0.19									12	0.19	0.19	
13													13												13	0.00	0.00	
14													14												14	0.00	0.00	
15													15												15	0.00	0.00	
16													16		T										16	T	T	
17													17	0.17	T										17	0.20	0.20	
18	T	T	T	T	0.01	0.02	0.01	0.05	0.07	0.10	0.04		18					0.01		0.03		T			18	0.31	0.31	
19													19		0.01										19	0.01	0.01	
20													20												20	0.00	0.00	
21													21												21	0.00	0.00	
22													22												22	T	T	
23													23												23	0.00	0.00	
24													24												24	0.00	0.00	
25													25												25	T	T	
26	T												26												26	T	T	
27													27												27	0.00	0.00	
28													28												28	0.00	0.00	
29													29				T								29	0.01	0.01	
30													30												30	0.00	0.00	

* Indicates sum of Hourly and Daily disagree.

MAXIMUM SHORT DURATION PRECIPITATION (See Note)

Time Period (Minutes)	5	10	15	20	30	45	60	80	100	120	150	180
Precipitation (Inches)	0.13	0.16	0.18	0.19	0.22	0.26	0.28	0.30	0.32	0.35	0.39	0.45
Ending Date	17	17	12	12	11	11	11	11	11	11	11	11
Ending Time (Hr/Min)	1253	1253	1417	1420	1211	1217	1221	1240	1240	1604	1616	1432

Note : The hourly and daily precipitation totals are printed in the last 2 columns and hi-lighted in red when they disagree. NWS does not edit ASOS hourly values but may edit daily and monthly totals. Hourly, daily, and monthly totals are printed as reported by the ASOS site.

Date and time are not entered for TRACE amounts.

REFERENCE NOTES & SUPPLEMENTAL SUMMARIES

* = Extreme for the month (last occurrence if more than one).

T = Trace precipitation amount.

+ = also occurs on earlier date.

FG+ = Heavy fog, visibility .25 miles or less.

BLANK entries denote missing or unreported data.

Resultant wind is the vector sum of the wind speeds and directions divided by the number of observations.

Wind direction is recorded in tens of degrees (2 digits) clockwise from true north. '00' = calm, 'VR' = variable.

Precipitation is for the 24-hour period ending at the time indicated in the column heading.

Ceilometer (30-second) data are used to derive cloudiness at or below 12,000 feet. This cloudiness is the mean cloud cover detected during sunrise to sunset (SR-SS), or midnight to midnight (MN-MN).

WEATHER NOTATIONS

QUALIFIER	WEATHER PHENOMENA		
DESCRIPTOR	PRECIPITATION	OBSCURATION	OTHER
BC Patches	DZ Drizzle	BR Mist	DS Duststorm
BL Blowing	GR Hail	DU Widespread Dust	FC Funnel Cloud
DR Low Drifting	GS Small Hail and/or Snow Pellets	FG Fog	+FC Tornado Waterspout
FZ Freezing	IC Ice Crystals	FU Smoke	PO Well-Developed Dust/Sand Whirls
MI Shallow	PL Ice Pellets	HZ Haze	
PR Partial	RA Rain	PY Spray	SQ Squalls
SH Shower(s)	SG Snow Grains	SA Sand	SS Sandstorm
TS Thunderstorm	SN Snow	VA Volcanic Ash	
VC In the Vicinity	UP Unkown Precipitation		GL Glaze

Intensity (as indicated on pages 4 to 6):
'+' = Heavy '' = Moderate '-' = Light

HOUSTON, TX APRIL 2017

Sky Condition is based on the sum (not to exceed 8) of the sunrise to sunset cloud cover below and above 12,000 feet.

Clear = 0-2 oktas, Partly Cloudy = 3-6 oktas, Cloudy = 7-8 oktas.

A Heating (Cooling) Degree Day is the difference between the average daily temperature and 65 degrees F. The HDD season begins July 1, the CDD season begins January 1.

Snow Depth, Snowfall, and Sunshine data may come from nearby sites that the National Weather Service deems Climatologically representative of this site.

NORMALS ARE FOR THE YEARS 1981-2010

ADDITIONAL NOTES & ERRATA:

Date	VISIBILITY (MILES)	
	MINIMUM	MAXIMUM
01	9.00	10.00
02	3.00	10.00
03	10.00	10.00
04	7.00	10.00
05	6.00	10.00
06	7.00	10.00
07	10.00	10.00
08	10.00	10.00
09	10.00	10.00
10	7.00	10.00
11	2.00	10.00
12	1.00	10.00
13	0.25	10.00
14	3.00	10.00
15	0.00	10.00
16	6.00	10.00
17	4.00	10.00
18	4.00	10.00
19	5.00	10.00
20	4.00	10.00
21	4.00	10.00
22	9.00	10.00
23	10.00	10.00
24	10.00	10.00
25	10.00	10.00
26	4.00	10.00
27	10.00	10.00
28	3.00	10.00
29	3.00	9.00
30	7.00	10.00
AVGS	5.94	9.97
MINIMUM VISIBILITY (MILES)		
<= .25	<= 3.0	>= 7.0
2	8	14

OBSERVATIONS AT 3-HOURLY INTERVALS

HOUSTON, TX
APRIL 2017

KIAH

WBAN # 12960

HOUR (LST)	SKY COVER	CEILING 100's of FT.	VISIBILITY (MILES)	WEATHER	TEMPERATURE °F			RELATIVE HUMIDITY (PCT)	WIND		PRESSURE (INCHES, HG)	
					DRY BULB	DEW POINT	WET BULB		SPEED (MPH)	DIRECTION Tens of Deg	STATION	SEA LEVEL
SUNRISE: 0545 APR 25 SUNSET: 1854												
03	FEW	250	10.00		65	57	60	76	5	17	29.59	29.70
06	FEW	250	10.00		66	59	62	78	7	17	29.58	29.69
09	BKN	027	10.00		76	64	68	67	11	18	29.59	29.70
12	BKN	032	10.00		81	66	71	61	14	17	29.57	29.68
15	BKN	044	10.00		84	68	73	59	14	18	29.50	29.60
18	BKN	042	10.00		79	68	72	69	17	17	29.47	29.58
21	BKN	041	10.00		77	69	72	77	14	16	29.48	29.59
24	OVC	027	10.00		77	70	72	79	9	17	29.48	29.59
SUNRISE: 0544 APR 26 SUNSET: 1855												
03	OVC	037	10.00		77	69	72	77	17	17	29.41	29.51
06	OVC	034	7.00		77	68	71	74	15	17	29.41	29.52
09	OVC	036	6.00	HZ	79	69	72	72	5	VR	29.47	29.58
12	BKN	070	7.00		85	71	75	63	15	18	29.45	29.55
15	BKN	250	7.00		88	70	76	55	7	VR	29.41	29.52
18	SCT	250	10.00		85	60	69	43	20	32	29.45	29.56
21	BKN	250	10.00		72	54	61	53	11	35	29.62	29.73
24	SCT	250	10.00		63	52	57	68	10	02	29.69	29.80
SUNRISE: 0543 APR 27 SUNSET: 1856												
03	CLR	NC	10.00		56	50	53	81	3	03	29.68	29.79
06	CLR	NC	10.00		54	49	51	83	7	07	29.71	29.82
09	FEW	250	10.00		65	47	55	52	13	08	29.73	29.84
12	FEW	250	10.00		75	51	61	43	7	11	29.70	29.80
15	FEW	250	10.00		79	50	62	36	11	17	29.62	29.73
18	BKN	250	10.00		76	47	60	36	11	14	29.58	29.69
21	BKN	250	10.00		70	62	65	76	10	15	29.58	29.68
24	OVC	022	10.00		74	67	69	79	8	17	29.56	29.66
SUNRISE: 0542 APR 28 SUNSET: 1856												
03	OVC	027	8.00		76	70	72	82	10	16	29.51	29.62
06	OVC	250	3.00	HZ	77	71	73	82	10	17	29.53	29.64
09	BKN	022	7.00		82	71	74	69	16	16	29.57	29.68
12	BKN	030	7.00		87	72	77	61	21	16	29.58	29.69
15	SCT	035	7.00		90	73	78	58	18	16	29.53	29.64
18	BKN	250	6.00	HZ	83	74	77	74	21	16	29.54	29.64
21	BKN	250	6.00	HZ	81	73	75	77	14	16	29.59	29.70
24	OVC	020	7.00		80	73	75	79	21	15	29.59	29.70
SUNRISE: 0541 APR 29 SUNSET: 1857												
03	OVC	025	8.00		80	73	75	79	22	15	29.55	29.65
06	OVC	016	7.00		79	73	75	82	20	14	29.57	29.68
09	OVC	025	4.00	HZ	82	74	76	77	24	16	29.57	29.67
12	OVC	029	4.00	HZ	84	74	77	72	26	17	29.54	29.64
15	OVC	018	4.00	HZ	82	74	76	77	17	16	29.51	29.61
18	OVC	250	3.00	HZ	82	73	76	74	22	16	29.48	29.59
21	OVC	045	5.00	-RA	79	74	76	85	9	18	29.57	29.67
24	OVC	025	6.00	BR	63	57	60	81	14	33	29.69	29.80
SUNRISE: 0540 APR 30 SUNSET: 1857												
03	OVC	055	10.00		64	51	57	63	11	30	29.70	29.81
06	OVC	070	10.00		63	49	55	60	10	31	29.73	29.84
09	OVC	095	10.00		62	48	55	60	11	30	29.82	29.92
12	SCT	120	10.00		67	45	55	45	10	32	29.83	29.94
15	CLR	NC	10.00		72	43	57	35	9	31	29.80	29.90
18	CLR	NC	10.00		73	39	55	29	10	29	29.79	29.89
21	CLR	NC	10.00		59	47	53	64	3	22	29.84	29.95
24	CLR	NC	10.00		56	48	52	75	0	00	29.86	29.97

HOUR (LST)	SKY COVER	CEILING 100's of FT.	VISIBILITY (MILES)	WEATHER	TEMPERATURE °F			RELATIVE HUMIDITY (PCT)	WIND		PRESSURE (INCHES, HG)	
					DRY BULB	DEW POINT	WET BULB		SPEED (MPH)	DIRECTION Tens of Deg	STATION	SEA LEVEL

3-HOURLY OBSERVATION NOTES

Sky Cover is the amount of the sky obscured. CLR or SKC = 0, FEW = 1/8-2/8, SCT = 3/8-4/8, BKN = 5/8-7/8, OVC = 8/8, W = Vertical Visibility = 8/8

Ceiling is reported in hundreds of feet above ground level for clouds at or below 12,000 feet. NC = No Ceiling detected.

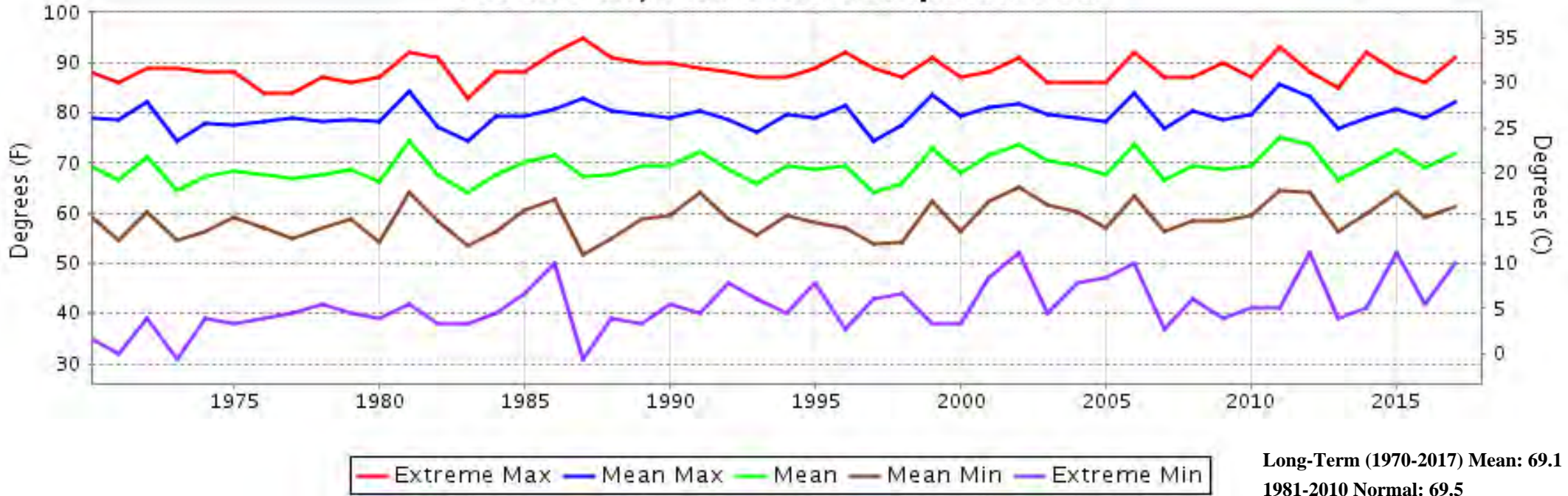
& = Original observation contained additional weather elements.

See page 3 for additional notes.

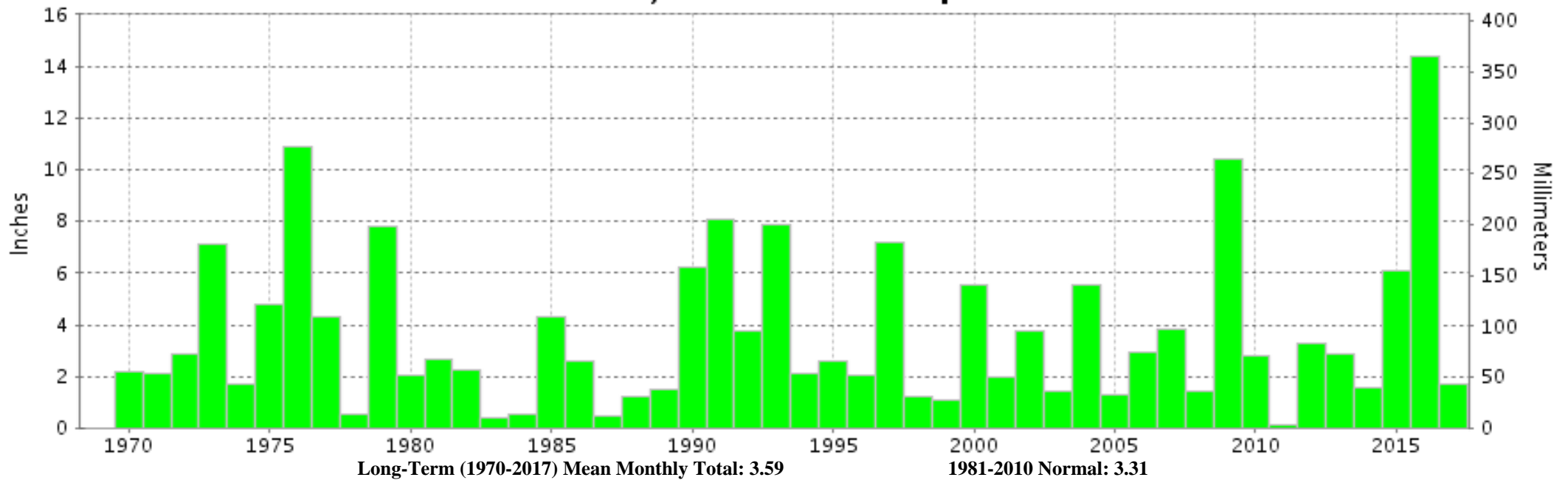
SUMMARY BY HOUR

HOUR (LST)	AVERAGES								RESULTANT WIND (MPH)	
	DRY BULB	DEW POINT	WET BULB	RELATIVE HUMIDITY	PRESSURE (Inches, HG)		VISIBILITY (Miles)	WIND SPEED (MPH)	SPEED	DIRECTION
					STATION	SEA LEVEL				
01	68	61	64	81	29.83	29.94	9.55	6	4	16
02	66	61	63	83	29.82	29.93	9.23	6	4	17
03	66	61	63	85	29.82	29.93	8.97	6	4	16
04	65	60	62	85	29.81	29.92	9.00	5	4	17
05	65	60	62	86	29.82	29.93	8.61	6	4	16
06	65	60	62	86	29.83	29.94	7.54	7	4	15
07	66	61	63	84	29.85	29.95	7.97	9	5	13
08	70	62	65	78	29.86	29.97	8.48	9	5	13
09	73	62	66	69	29.87	29.97	9.37	11	4	14
10	75	61	66	62	29.87	29.98	9.23	11	4	14
11	77	60	67	58	29.87	29.98	9.30	11	3	15
12	78	60	67	55	29.86	29.96	9.17	13	4	14
13	79	59	67	54	29.84	29.95	9.20	12	3	15
14	79	60	67	55	29.82	29.93	9.23	12	5	13
15	80	59	67	52	29.80	29.91	9.37	13	5	13
16	79	59	67	53	29.79	29.89	9.30	13	5	13
17	78	59	67	55	29.78	29.89	9.57	15	5	13
18	76	59	66	57	29.80	29.92	9.62	14	6	12
19	73	60	65	65	29.80	29.91	9.67	11	5	13
20	71	60	65	69	29.81	29.92	9.77	9	5	13
21	70	60	65	72	29.83	29.94	9.67	9	4	14
22	70	61	64	75	29.84	29.95	9.70	7	4	15
23	69	61	64	78	29.85	29.96	9.52	7	4	16
24	67	61	64	80	29.85	29.96	9.52	7	4	16

HOUSTON, TX APRIL Temperatures



HOUSTON, TX APRIL Precipitation





APRIL 2017
HOUSTON, TX

LOCAL CLIMATOLOGICAL DATA

NOAA, National Centers for Environmental Information

I certify that this is an official publication of the National Oceanic and Atmospheric Administration (NOAA). It is compiled using information from weather observing sites operated by NOAA-National Weather Service / Department Of Transportation-Federal Aviation Administration and received at the National Centers for Environmental Information (NCEI), Asheville, North Carolina 28801.

A handwritten signature in black ink that reads "Margarita Jee SS".

DIRECTOR (ACTING)

NCEI now offers free online access to the **Edited Local Climatological Data Publication**. Go to : www.ncdc.noaa.gov and choose Most Popular.

We welcome your questions or comments, please contact us at:
(828) 271-4800, option 2
Fax Number : 828-271-4876
TDD : (828) 271-4010
or Email : ncdc.orders@noaa.gov

NOAA\National Centers for Environmental Information
Attn: User Engagement & Services Branch
151 Patton Avenue
Asheville, NC 28801-5001