



2012 Annual Climate Summary for SOUTHEAST TEXAS WFO Houston/ Galveston



An overall dry 2012 became the warmest year on record for the county warning and forecast area of the Houston/Galveston National Weather Service Office. Of the four first order climate sites, 2012 was the warmest on record for the City of Houston, City of Galveston, and Hobby Airport (see Figure 1). 2012 tied 2011 as the warmest year on record at College Station. Note that the fifth warmest year on

record for the City of Houston of 71.5 was set also in 1927. For the City of Galveston the third warmest year of 72.3 was set in two additional years, 1994 and 1993.

Regarding the monthly temperature data, the months that really stand out are January through April where every climate site experienced above average temperatures and departures from normal of between 3.0 at the lowest to 6.7 at the highest (see Figures 2-3).

When it comes to rainfall, 2012 had a wet start with the first three months experiencing well above normal rainfall. However, April began a dry period which helped overcome

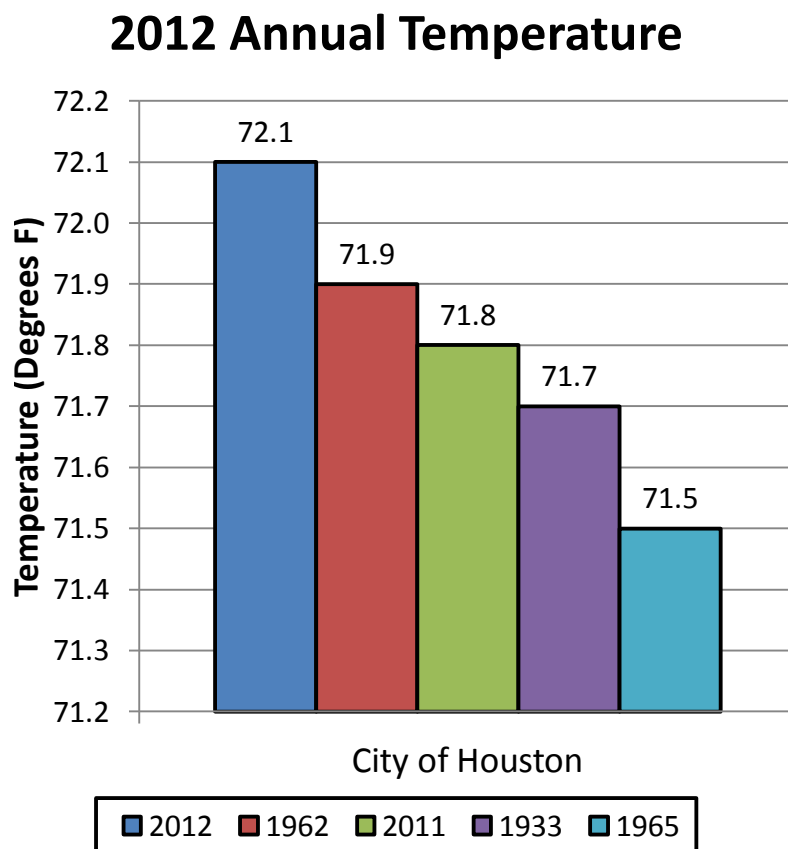
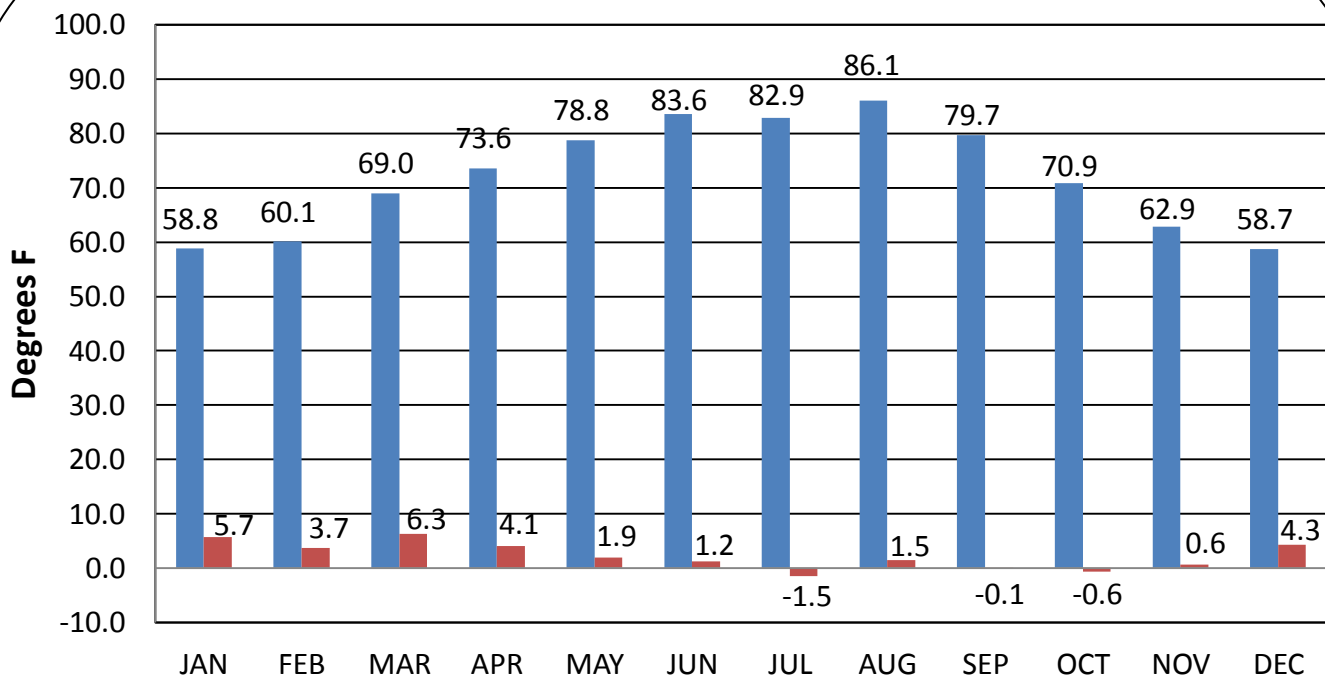


Figure 1: 2012 Annual Temperature for the City of Houston

the prior rainfall excess. Of the first order climate sites, only College Station experienced above normal rainfall for the year due in large part to rainfall totals of just above 20" for the January through March period (see Figure 4). Elsewhere, the annual rainfall deficits ranged from 2.79" to 7.45" below normal.

a) City of Houston



b) Hobby Airport

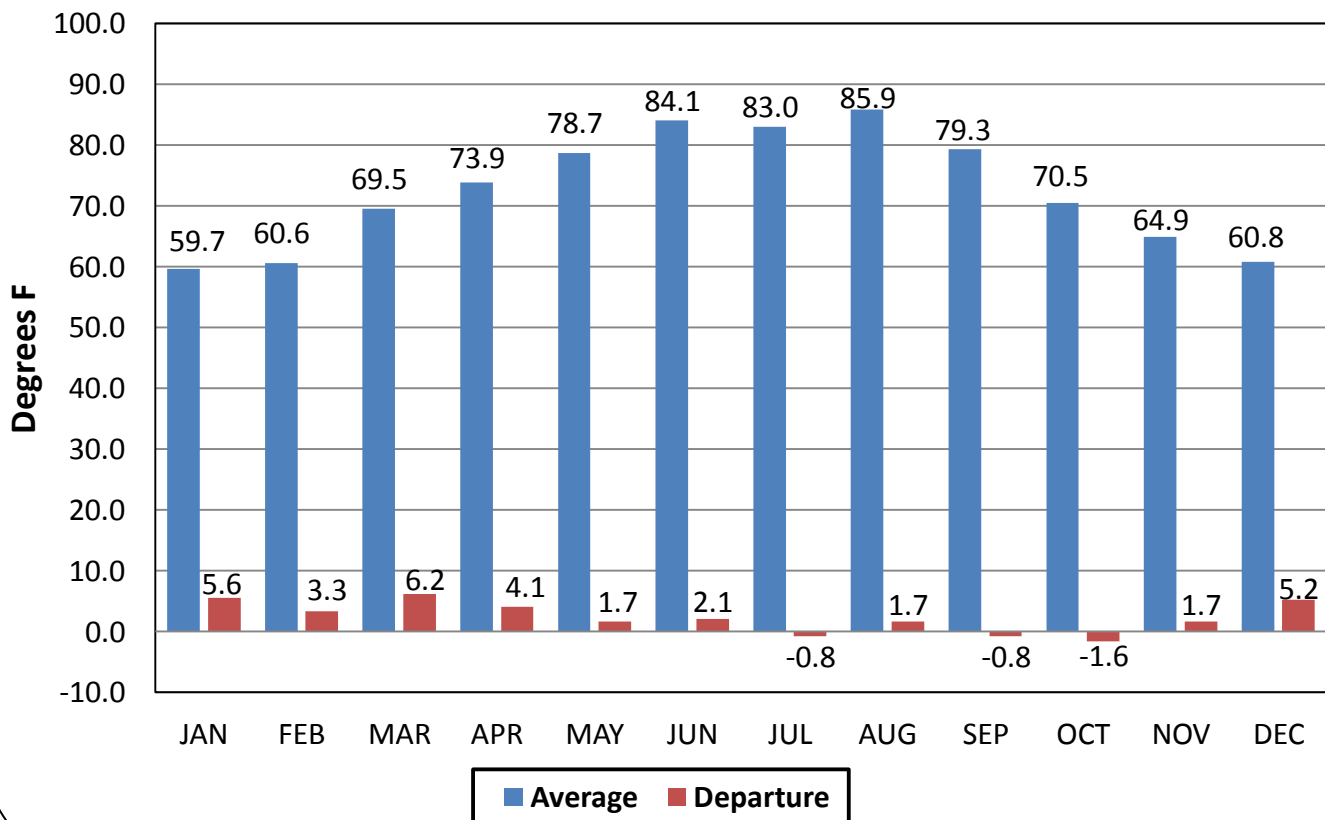
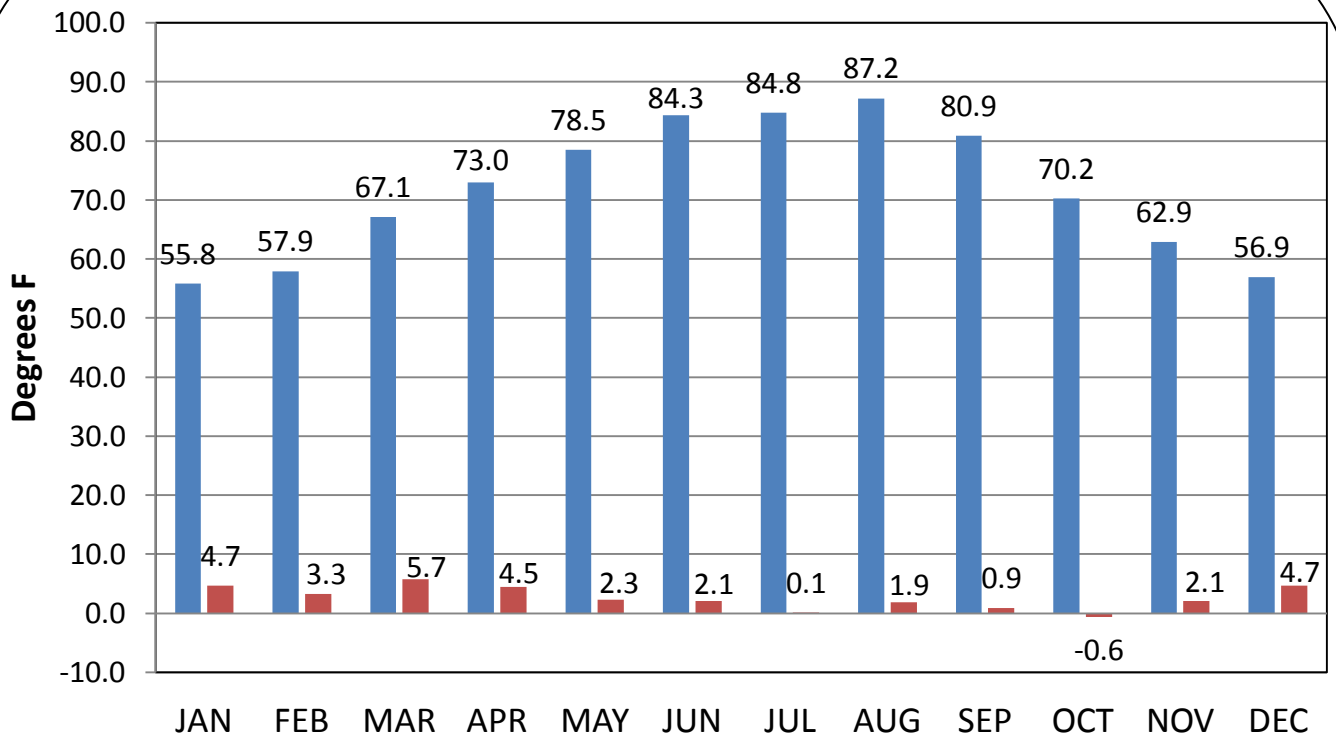


Figure 2: Monthly average temperatures and departures from normal

a) College Station



b) Galveston

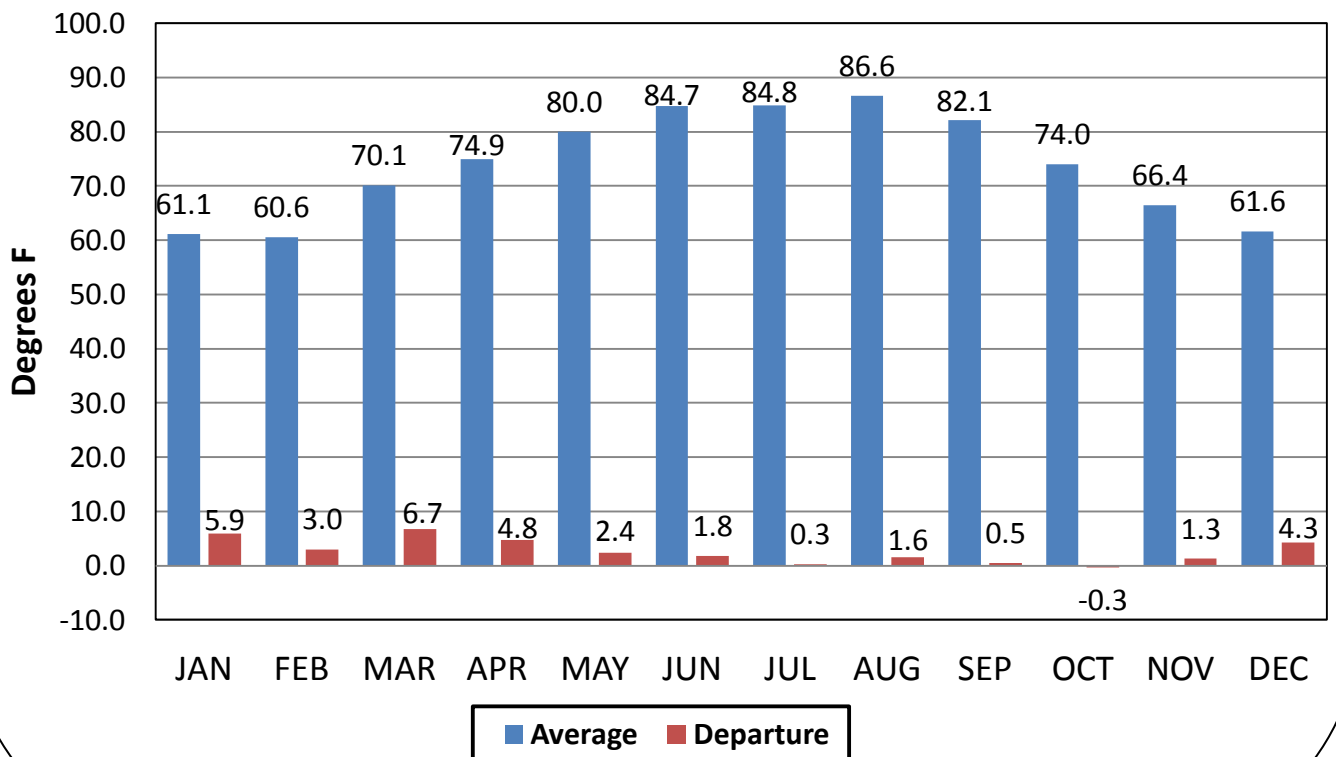


Figure 3: Monthly average temperatures and departures from normal

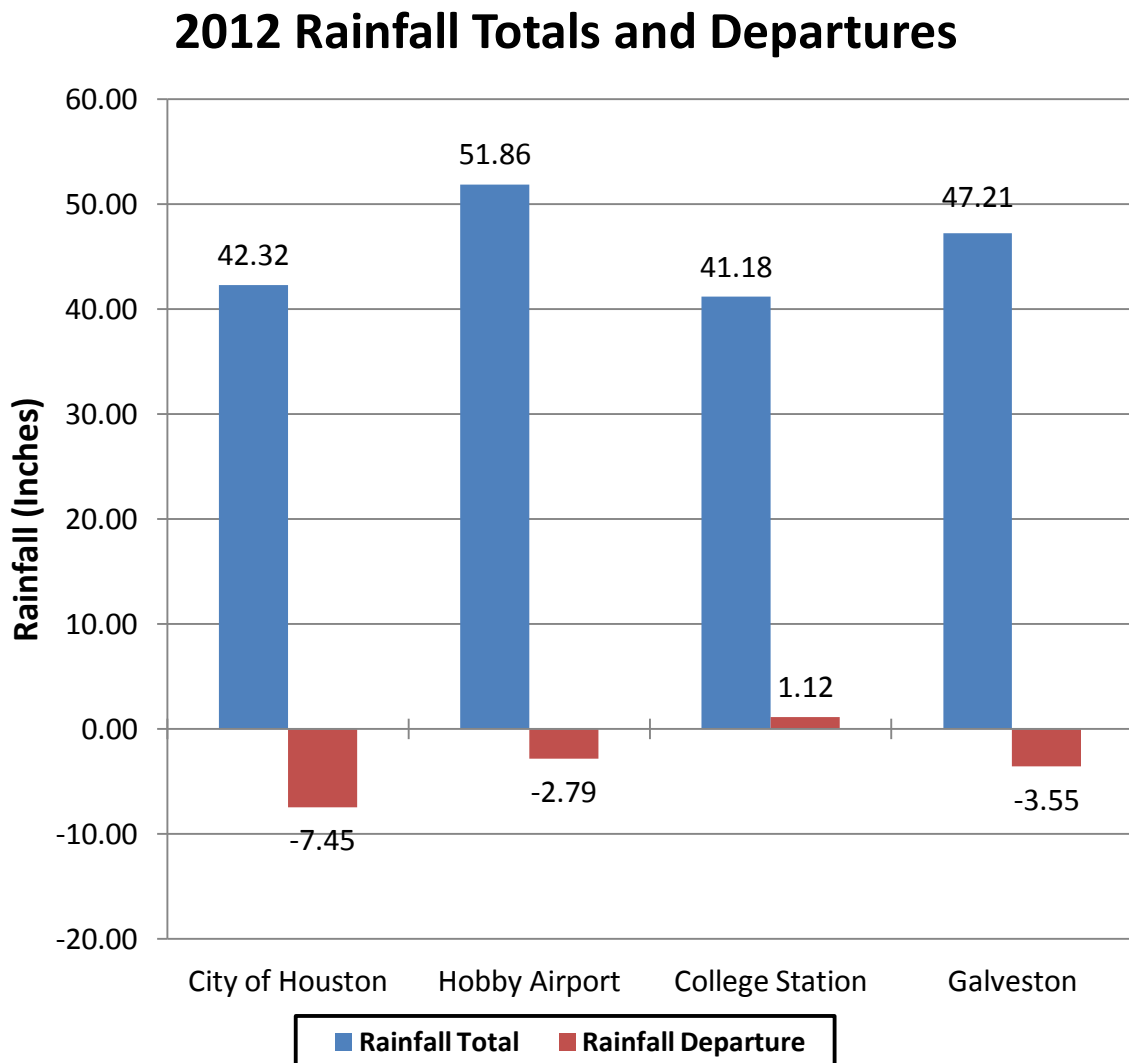


Figure 4: 2012 Annual rainfall totals and departures for first order climate sites

Figure 5 illustrates how much of Southeast Texas received less than normal precipitation for 2012. Everywhere that is yellow is below normal for the year, while everything that is shaded grey or green is above normal.

Houston/Galveston, TX (HGX): Full Year 2012 Percent of Normal Precipitation
Valid at 1/1/2013 1200 UTC- Created 1/3/13 21:46 UTC

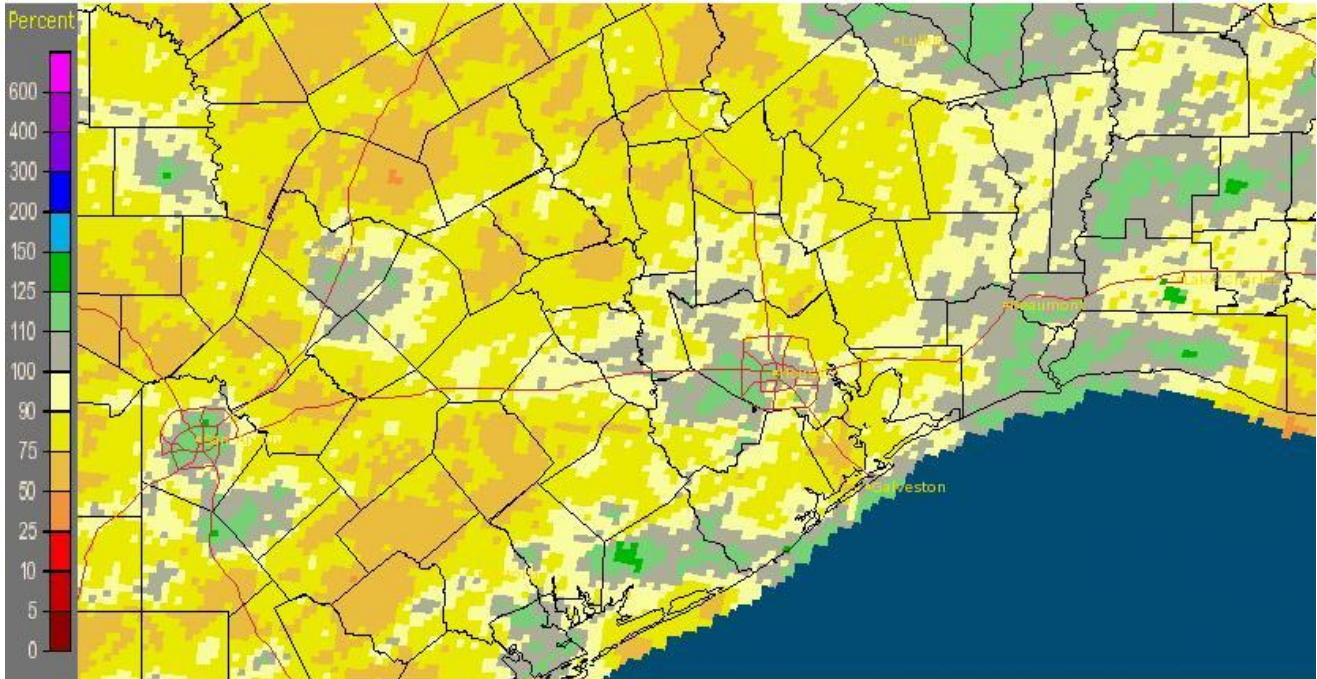


Figure 5: 2012 percent of normal precipitation
(<http://water.weather.gov/precip/>)

National Weather Service
Houston/ Galveston, TX Weather Forecast Office
1353 FM 646 Suite 202
Dickinson, TX 77539
281-337-5074
Questions/ Comments: sr-hgx.webmaster@noaa.gov

