

# NWS Houston, Texas April 2019 Regional Climate Summary

**Produced by Nikki Hathaway**

## ***. . . A Very Active April. . .***

*Spring conditions arrived in the month of April, and with that, so did the severe weather. There were five confirmed tornadoes that occurred across the forecast area throughout the month, specifically impacting Brazos, Walker, Madison, Montgomery and Houston counties. In addition, above normal monthly rainfall totals occurred mostly along and north of I-10, with below normal monthly rainfall totals to the south. Temperatures on average hovered around normal. Overall, a total of ten daily records were set across the primary climate sites.*

# Table of Contents

Page Number	Page Title
1	Cover
2	Table of Contents
3	Precipitation
4	Total Monthly Precipitation
5	Total Monthly Precipitation Departure from Normal
6-8	April's Severe Weather – Tornadoes
9	Temperatures
10-11	Monthly Temperature Charts
12	Drought Conditions
13	April Daily Record Reports
14	May Outlook
15	Climate Primary Site History



# Precipitation

*A storm system moved through SE TX during the first week of April, bringing both showers and thunderstorms which lead to severe weather. Specifically, on April 6<sup>th</sup>, hailstones the size of softballs were reported in the city of Grapeland, and baseball sized hail was reported just west of Madisonville. Hail was also reported on this day in other cities such as Crockett and Kennard, with hailstones ranging in size from an inch to 1.75 inches. On April 7<sup>th</sup>, the severe storms continued, this time being primarily isolated damaging winds resulting in damage to carports, roofs, trees and downed fences and powerlines across Matagorda, Fort Bend, Brazoria, Jackson, Harris, Polk and Galveston counties. An EF-0 tornado also occurred in Montgomery County near the city of Keenan, which resulted in a downed tree on a trailer and other down or snapped trees. The beginning of the second week in April allowed for a short break in the severe weather, but by the end of the week, another frontal boundary aided in the development of multiple tornadoes across Madison and Houston counties on April 13<sup>th</sup>. About a half inch to an inch and a half of rainfall occurred during the first two weeks, with better rainfall coverage further inland. There were a few more rounds of severe weather throughout the rest of the month, with most of the impacts being hail and damaging winds and another isolated tornado on April 24<sup>th</sup>. Another inch to three inches of rain fell during the second half of the month, mostly along and north of I-10.*

Site	Total Precipitation (in.)	Departure from Normal (in.)	Number of Thunder Days	Maximum Daily Precipitation (in./date)	
Galveston (GLS)	0.99	-2.06	3	0.58	April 1st
Houston Hobby (HOU)	2.21	-1.04	7	0.94	April 18th
City of Houston (IAH)	3.36	0.05	6	1.51	April 18th
College Station (CLL)	5.55	2.89	6	2.07	April 24th

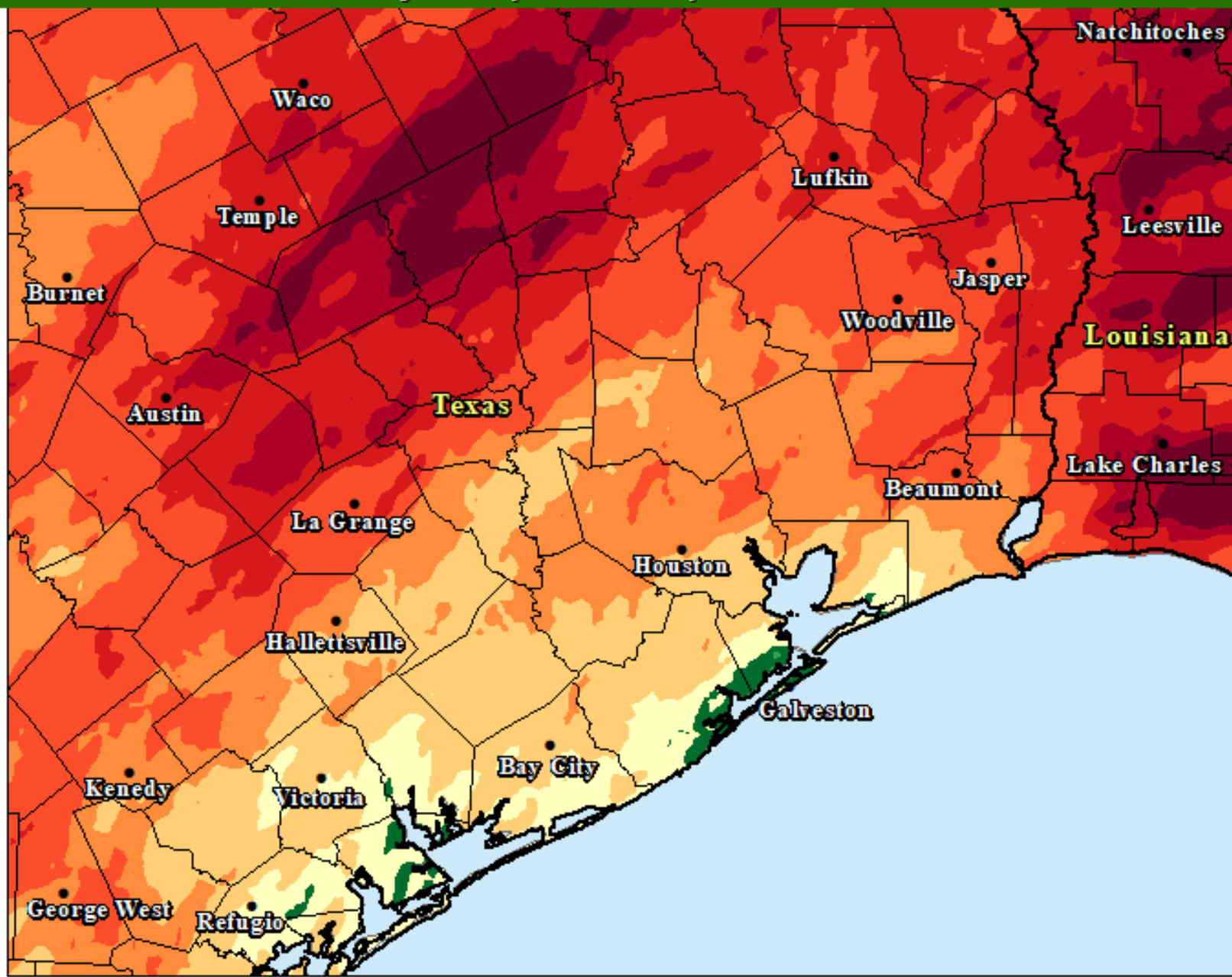
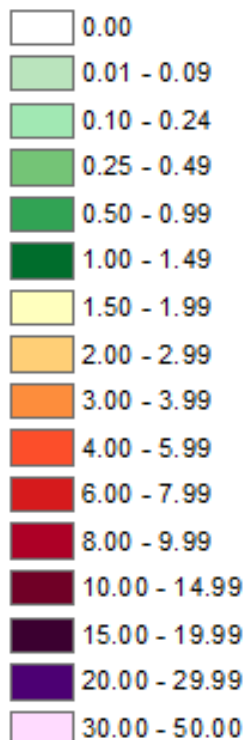




# Precipitation (Continued)

## Total Monthly Precipitation - April 2019

### Inches



Created by the  
NWS Forecast Office  
Houston/Galveston, TX



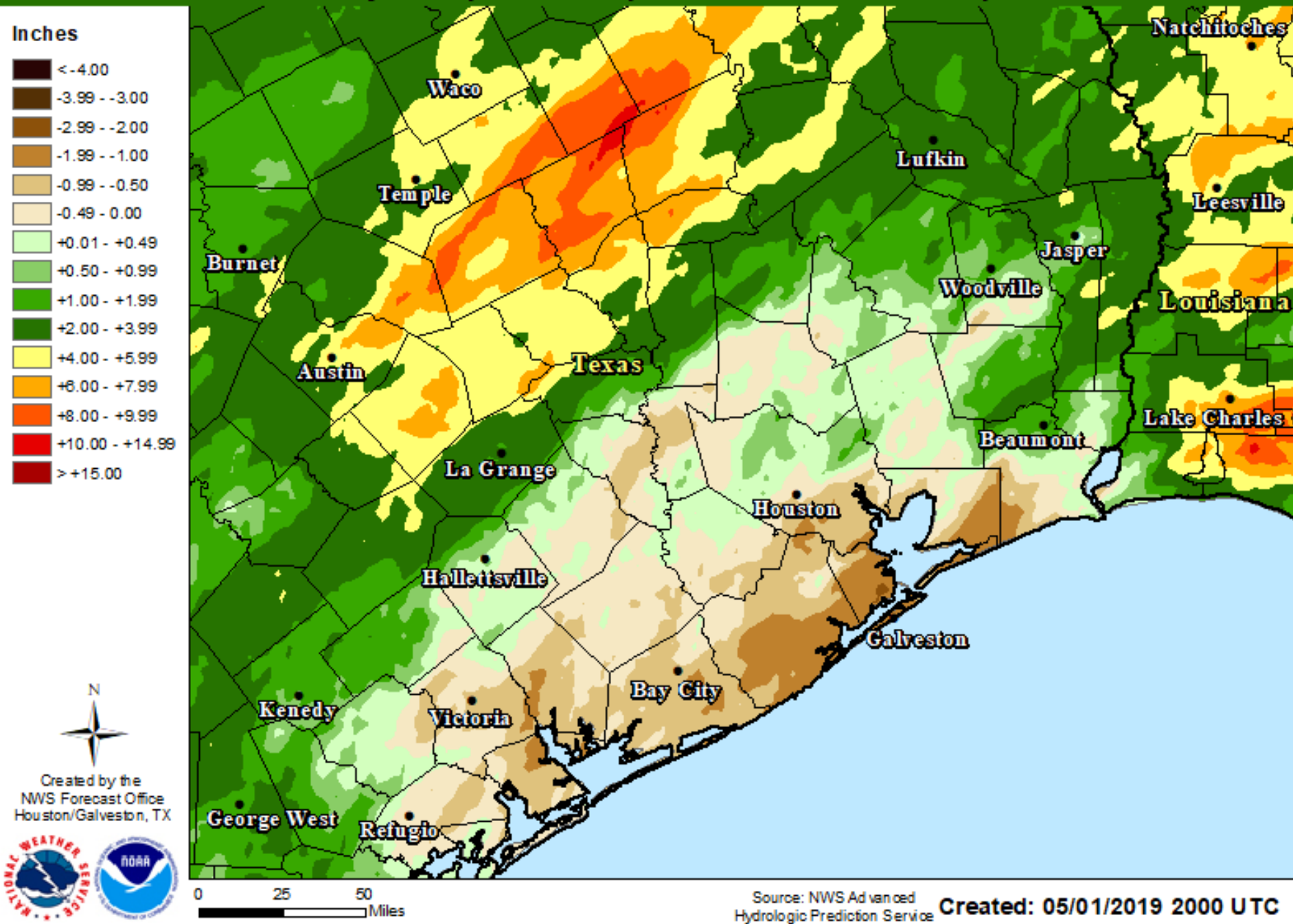
0 25 50  
Miles

Source: NWS Advanced Hydrologic Prediction Service Created: 05/01/2019 2000 UTC



# Precipitation (Continued)

## Total Monthly Precipitation Departure From Normal - April 2019





# April's Severe Weather - Tornadoes

## Tornado - Weches Houston County, TX

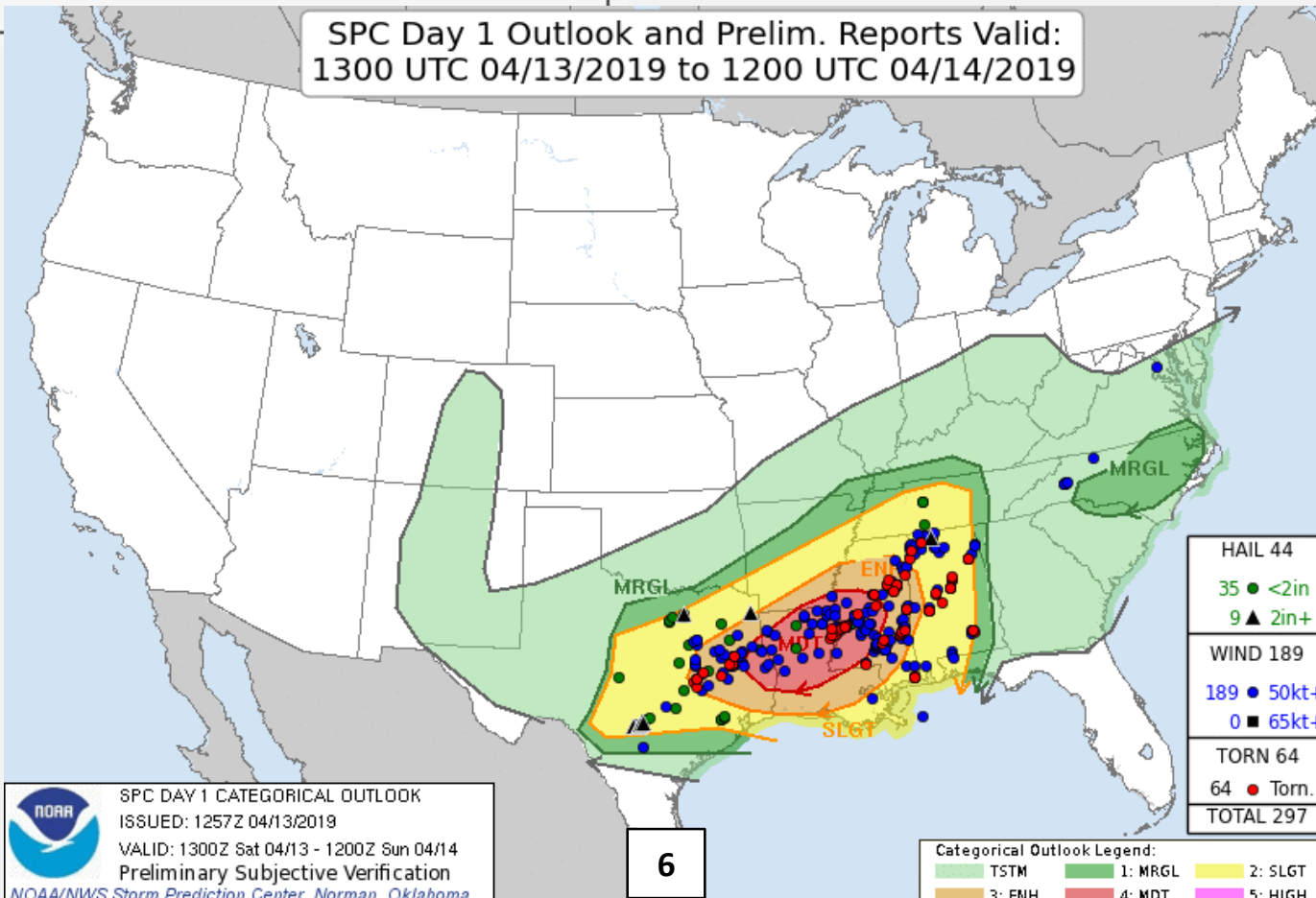
<b>Date</b>	April 13, 2019
<b>Time (Local)</b>	1256 PM CDT
<b>EF Rating</b>	EF-3
<b>Est. Peak Winds</b>	140 MPH
<b>Path Length</b>	15 mi
<b>Max Width</b>	800 yd
<b>Injuries/Deaths</b>	0/1

### Summary:

Tornado touched down in Houston County northeast of Crockett and tracked for 15 miles to the county line. A new tornado began just inside Cherokee County. Most of the damage was snapped pines, indicative of EF-1 damage but much more severe damage was found in an area just northeast of Weches. There, a double-wide trailer and its frame were thrown over 150 yards and destroyed. A female occupant within the trailer was killed.



SPC Day 1 Outlook and Prelim. Reports Valid:  
1300 UTC 04/13/2019 to 1200 UTC 04/14/2019





# April's Severe Weather - Tornadoes

## Tornado - Tadmor Houston County, TX

<b>Date</b>	April 13, 2019
<b>Time (Local)</b>	1133 AM CDT
<b>EF Rating</b>	EF-1
<b>Est. Peak Winds</b>	90 MPH
<b>Path Length</b>	0.3 mi
<b>Max Width</b>	75 yd
<b>Injuries/Deaths</b>	4/0

### Summary:

Tornado damage was found along County Road 1175, with trees snapped and uprooted along a path parallel to the road. Near the end of the path, the tornado destroyed a double-wide trailer home and pushed it into a wooded area. Four occupants in the home were injured, but as of April 14th, were released from the hospital.



EF-1 Tornado: Kennard Area near Tadmor

## Tornado - Lovelady Houston County, TX

<b>Date</b>	April 13, 2019
<b>Time (Local)</b>	1223 PM CDT
<b>EF Rating</b>	EF-2
<b>Est. Peak Winds</b>	130 MPH
<b>Path Length</b>	3.9 mi
<b>Max Width</b>	100 yd
<b>Injuries/Deaths</b>	0/0

### Summary:

Tornado produced intermittent damage along its track, taking a metal roof off of a home where it touched down. The most severe damage was on the northeast end of the track where trees were stripped of limbs, vehicles were tossed and stacked on one another, and a double-wide trailer home was destroyed.



EF-2 Tornado: Lovelady Area

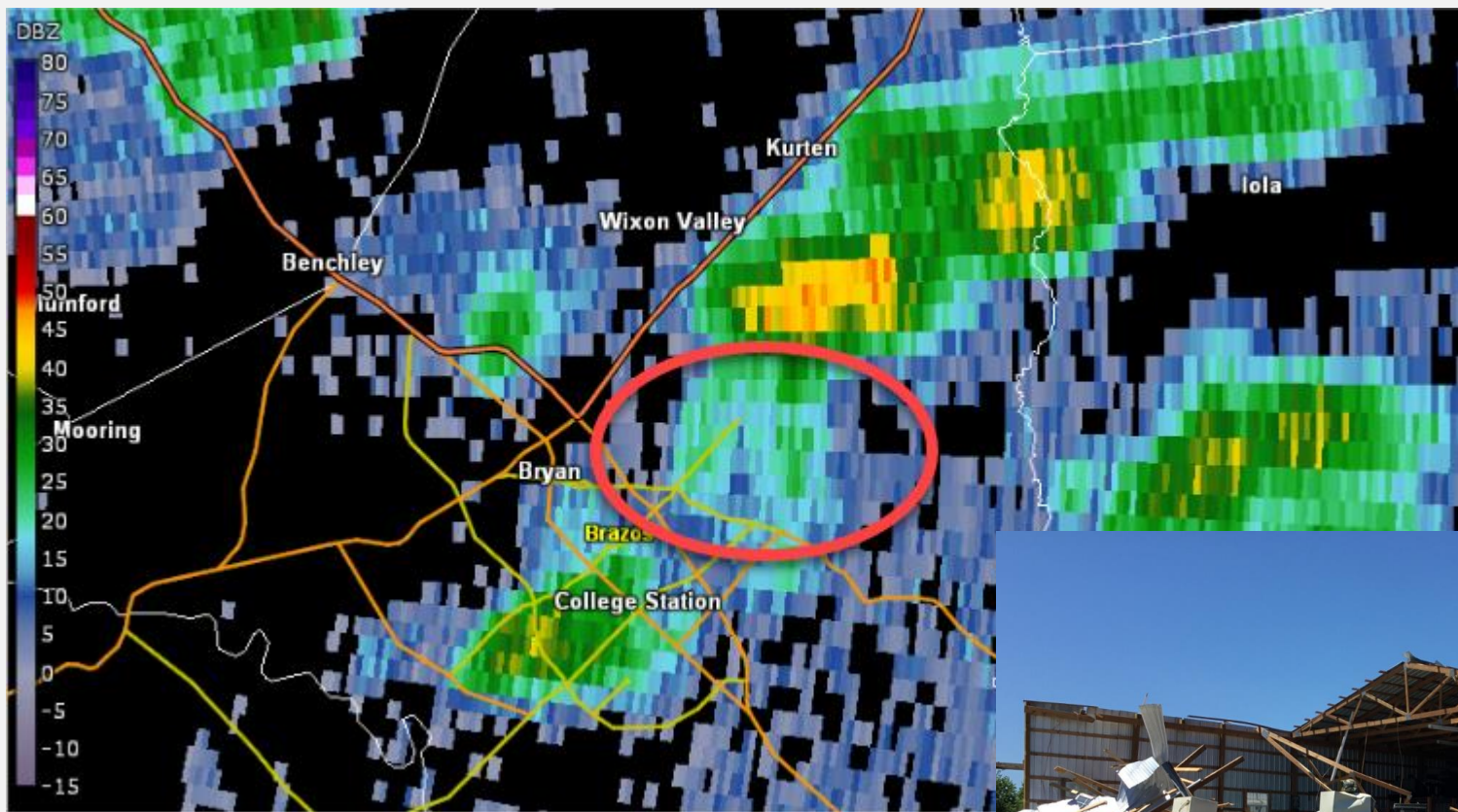


All photos were captured during an official NWS Houston/Galveston storm survey.





# April's Severe Weather - Tornadoes



EF-2 Tornado: Bryan Area

**Tornado - 4E Bryan**  
BRAZOS COUNTY, TEXAS

<b>Date</b>	April 24, 2019
<b>Time (Local)</b>	4:42 PM
<b>EF Rating</b>	EF-2
<b>Est. Peak Winds</b>	120
<b>Path Length</b>	1.6 miles
<b>Max Width</b>	100 yards
<b>Injuries/Deaths</b>	1/0

**Summary:**

Damage survey found that a tornado touched down about 4 miles east of Bryan, Texas along Farm to Market Road 1179 at around 442pm CDT. It caused damage to one house and four commercial buildings and warehouses. There was one injury to a male inside one of the warehouses. The tornado then tracked north-northwest towards another warehouse building with tree damage along its path before dissipating near Merka Drive east of Old Reliance Road around 447pm CDT. Damage to the warehouses and commercial buildings was rated EF-2 with other damage ranging from EF-0 to EF-1. Start time and end times of the tornado were based on eyewitness reports and time matched with radar data.



All photos were captured during an official NWS Houston/Galveston storm survey.





# Temperatures

*Daily average temperatures did not sway too far away from normal throughout the month of April. The month started out on the cold side with average temperatures ten to twenty degrees below normal for the first three days of the month. Temperatures quickly rebounded towards the second half of the first week, before another cool down occurred at the end of the second week and much of the third. Summer quickly crept in by the end of the month as daily average temperatures were anywhere from five to ten degrees above normal.*

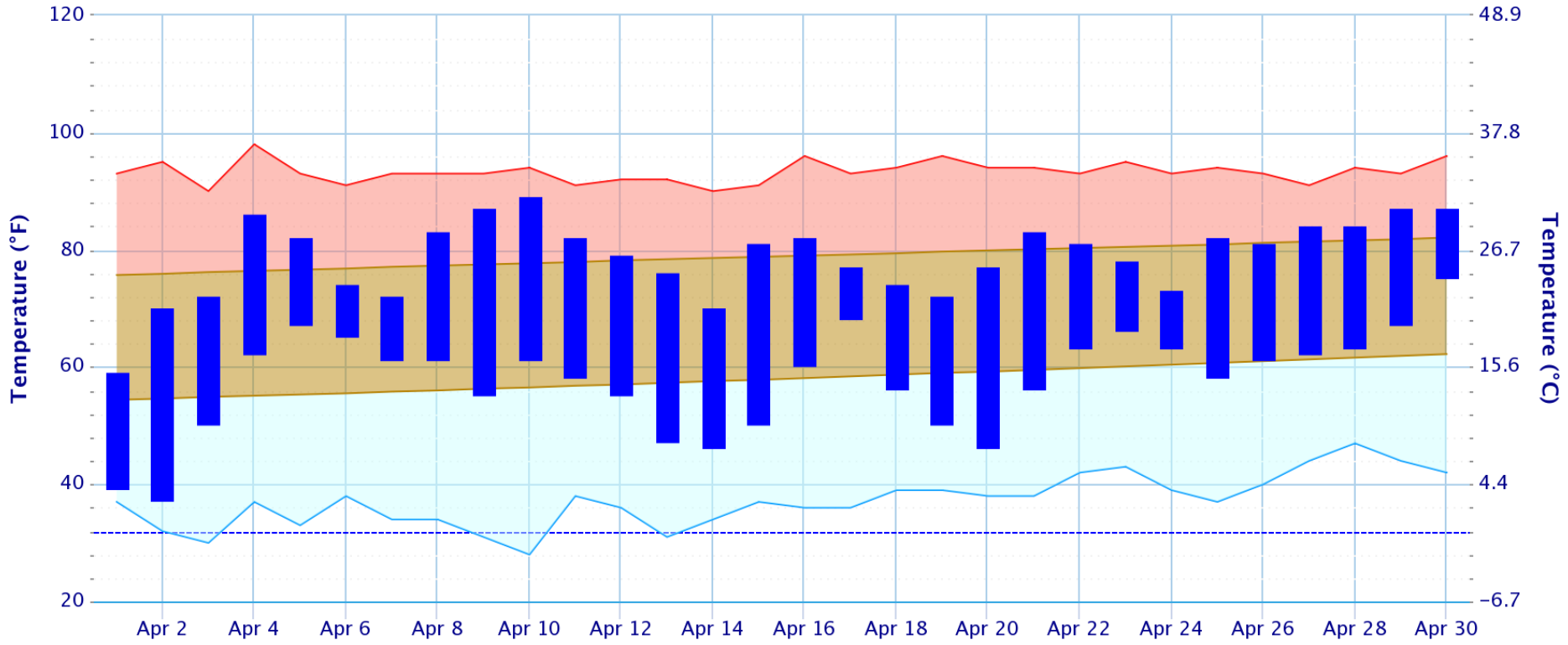
Site	Average Temp (F)	Average High Temp (F)	Average Low Temp (F)	Normal Average Temp (F)	Departure From Normal (F)	Maximum Temperature (F)	Minimum Temperature (F)
Galveston (GLS)	70.1	76.3	63.8	70.1	0.0	86 on April 9th	47 on April 2nd
Houston Hobby (HOU)	70.3	79.7	60.9	69.7	0.5	90 on April 9th	40 on April 2nd
City of Houston (IAH)	69.7	80.1	59.2	69.5	0.2	91 on April 10th	37 on April 2nd
College Station (CLL)	68.2	78.8	57.6	68.5	-0.3	89 on April 10th	37 on April 2nd



# Monthly Temperature Charts

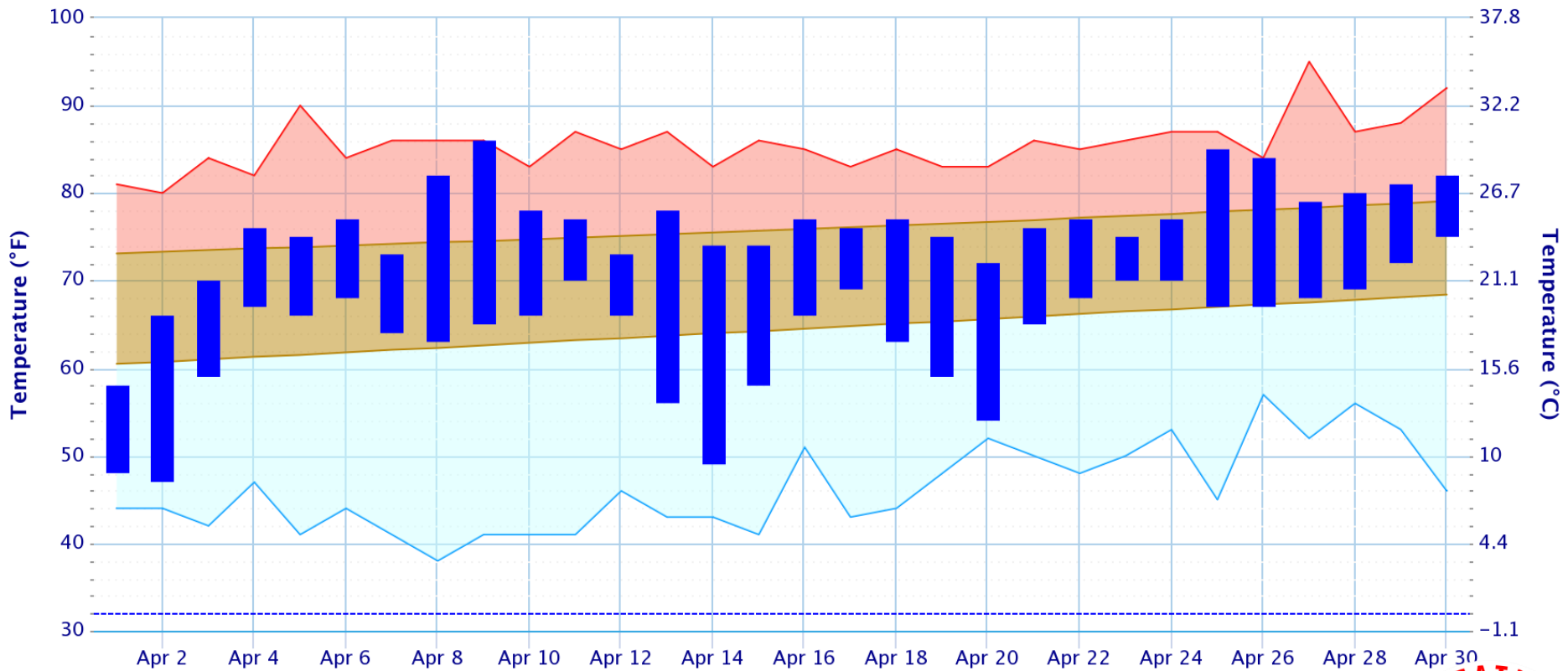
## Daily Temperature Data – College Station Area, TX (ThreadEx)

Period of Record – Max temperature: 1888-10-01 to 2019-05-20; Min temperature: 1882-05-15 to 2019-05-20. Normals period: 1981-2010. Click and drag to zoom chart.



## Daily Temperature Data – Galveston Area, TX (ThreadEx)

Period of Record – 1874-05-10 to 2019-05-20. Normals period: 1981-2010. Click and drag to zoom chart.



● Observed temperature range (2019)    
 ● Normal temperature range    
 — Record Max    
 — Record Min

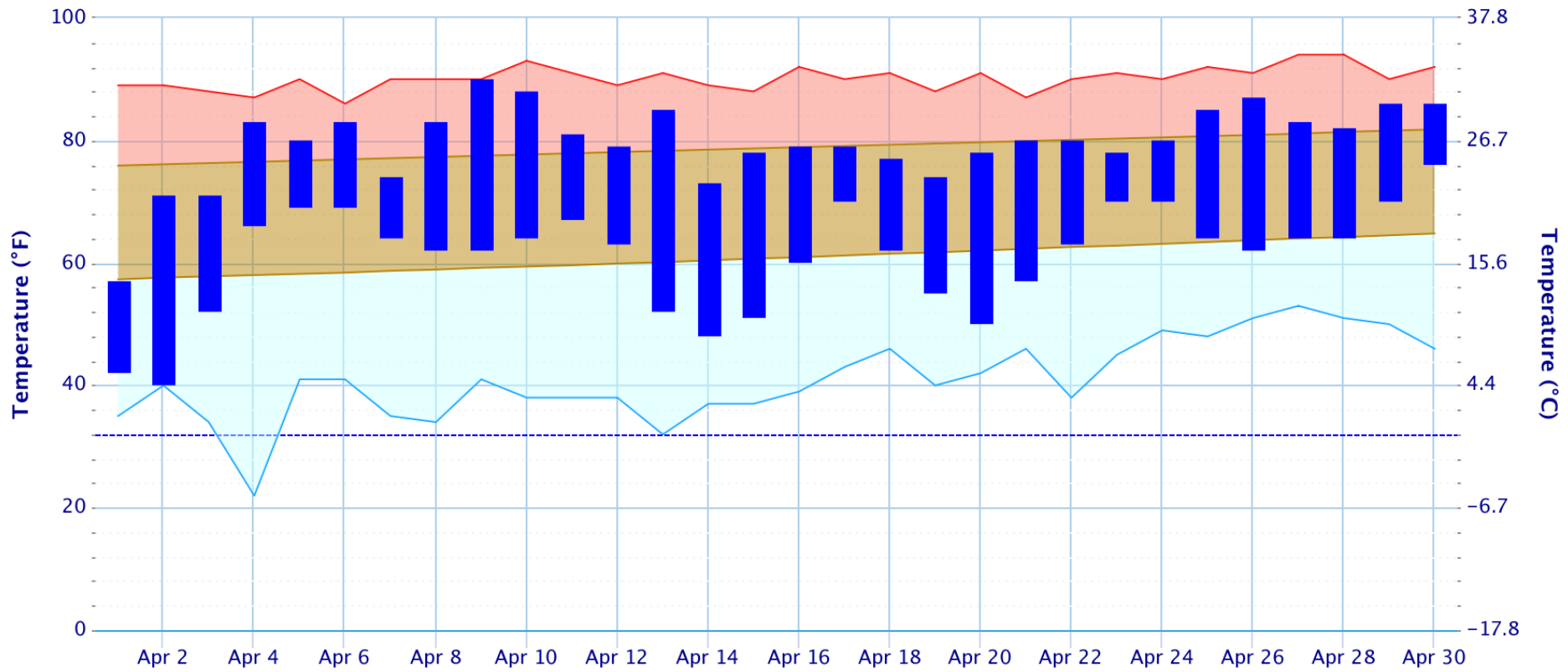




# Monthly Temperature Charts (continued)

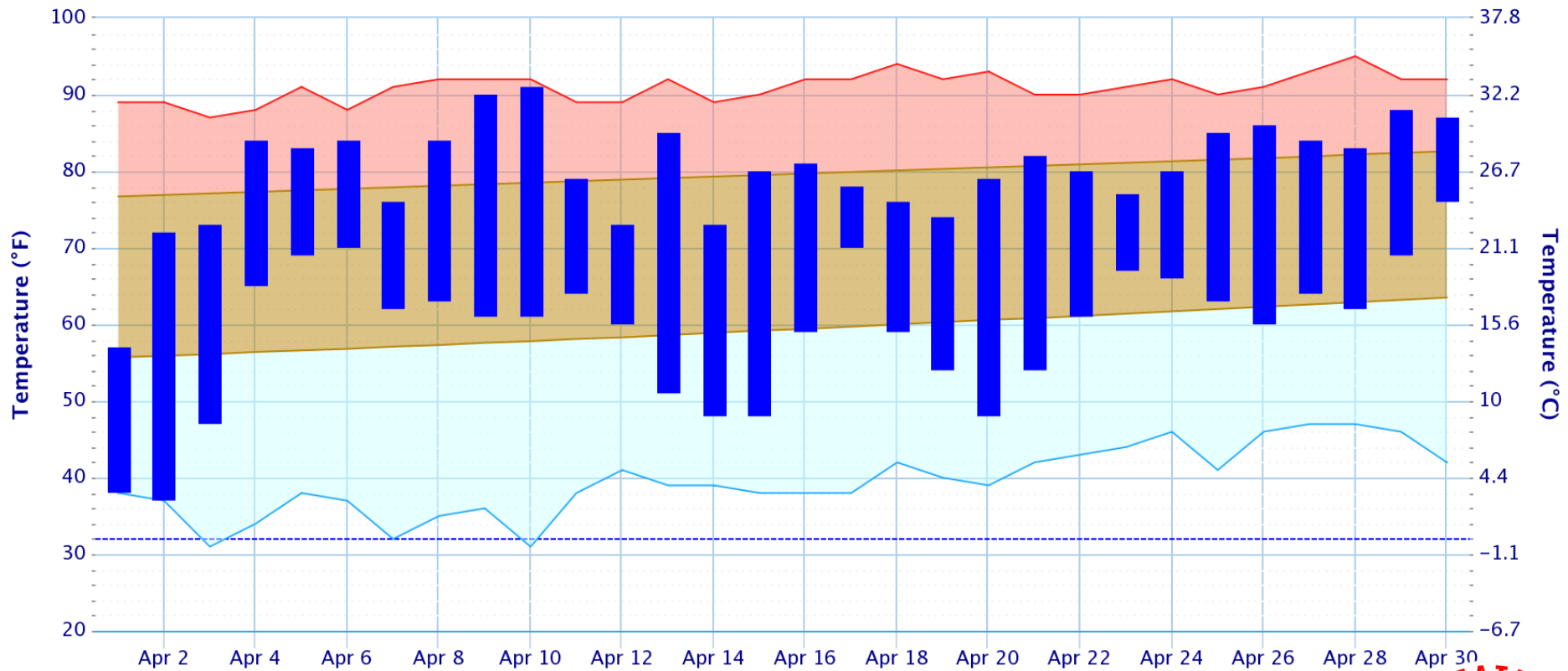
Daily Temperature Data – HOUSTON WILLIAM P HOBBY AP, TX

Period of Record – 1930-08-01 to 2019-05-20. Normals period: 1981-2010. Click and drag to zoom chart.



Daily Temperature Data – Houston Area, TX (ThreadEx)

Period of Record – 1889-05-01 to 2019-05-20. Normals period: 1981-2010. Click and drag to zoom chart.



● Observed temperature range (2019)  
 ● Normal temperature range  
 — Record Max  
 — Record Min



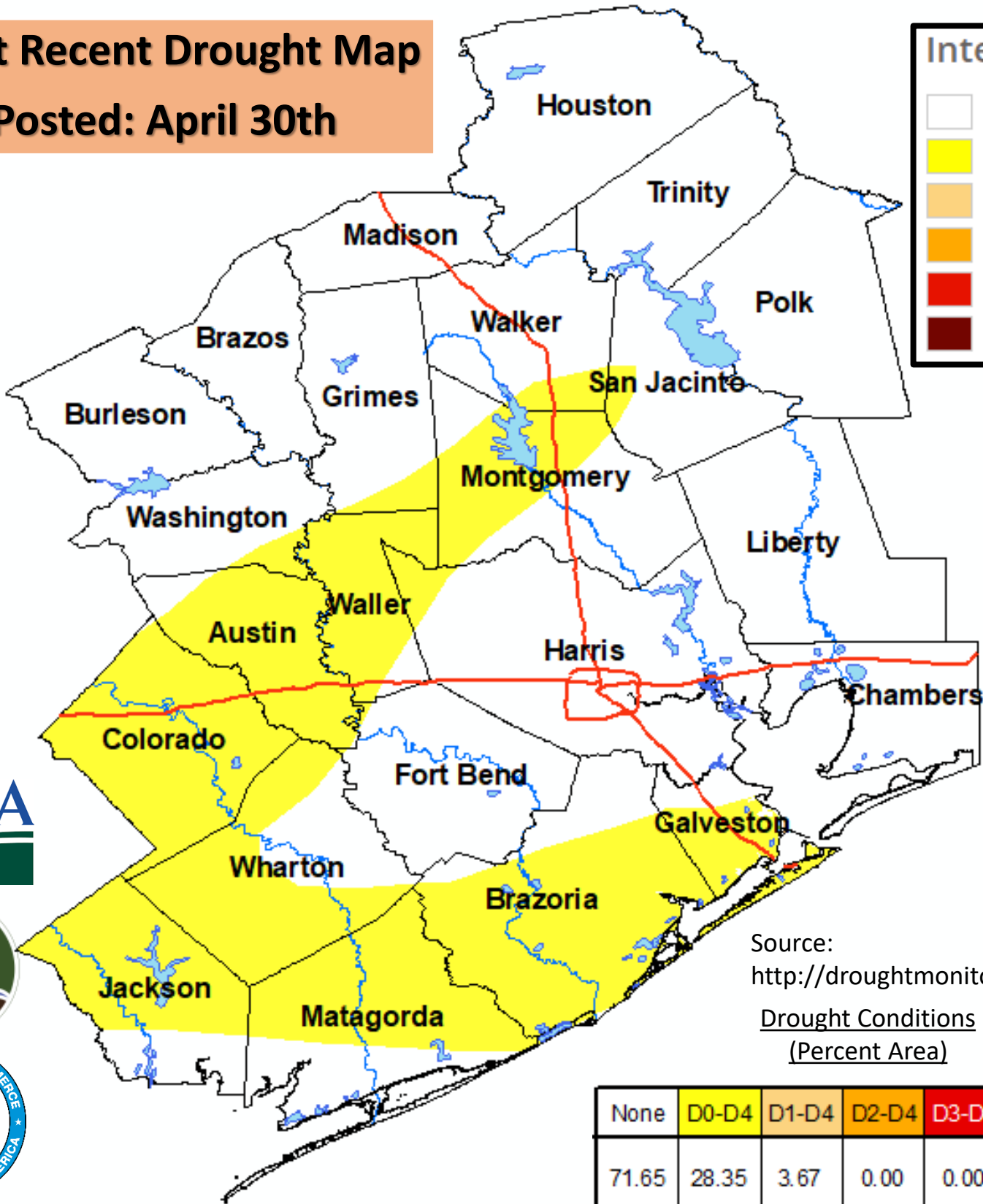
# Drought Conditions

*The month of April ended with abnormally dry conditions across the coastal counties, and along and just north of I-10.*

**Most Recent Drought Map**  
**Posted: April 30th**

**Intensity:**

- None
- D0 (Abnormally Dry)
- D1 (Moderate Drought)
- D2 (Severe Drought)
- D3 (Extreme Drought)
- D4 (Exceptional Drought)



Source:  
<http://droughtmonitor.unl.edu>

Drought Conditions  
 (Percent Area)

None	D0-D4	D1-D4	D2-D4	D3-D4	D4
71.65	28.35	3.67	0.00	0.00	0.00





# April Daily Record Reports

*A total of 10 daily records were set across all of the primary climate sites.*

Site	Date	Record Type	New Record	Previous Record
City of Houston	April 1st	Low Min Temperature	38°	39° in 1987
City of Houston	April 2nd	Low Min Temperature	37°	38° in 1996
Houston Hobby	April 1st	Low Max Temperature	57°	62° in 1938
Houston Hobby	April 9th	High Max Temperature	90°	90° in 1963
City of Galveston	April 9th	High Max Temperature	86°	82° in 2012
City of College Station	April 18th	Rainfall	1.66"	1.62" in 1922
City of Galveston	April 26th	High Max Temperature	84°	84° in 2017
City of College Station	April 30th	High Min Temperature	75°	74° in 2010
Houston Hobby	April 30th	High Min Temperature	76°	75° in 1967
City of Houston	April 30th	High Min Temperature	76°	75° in 1967



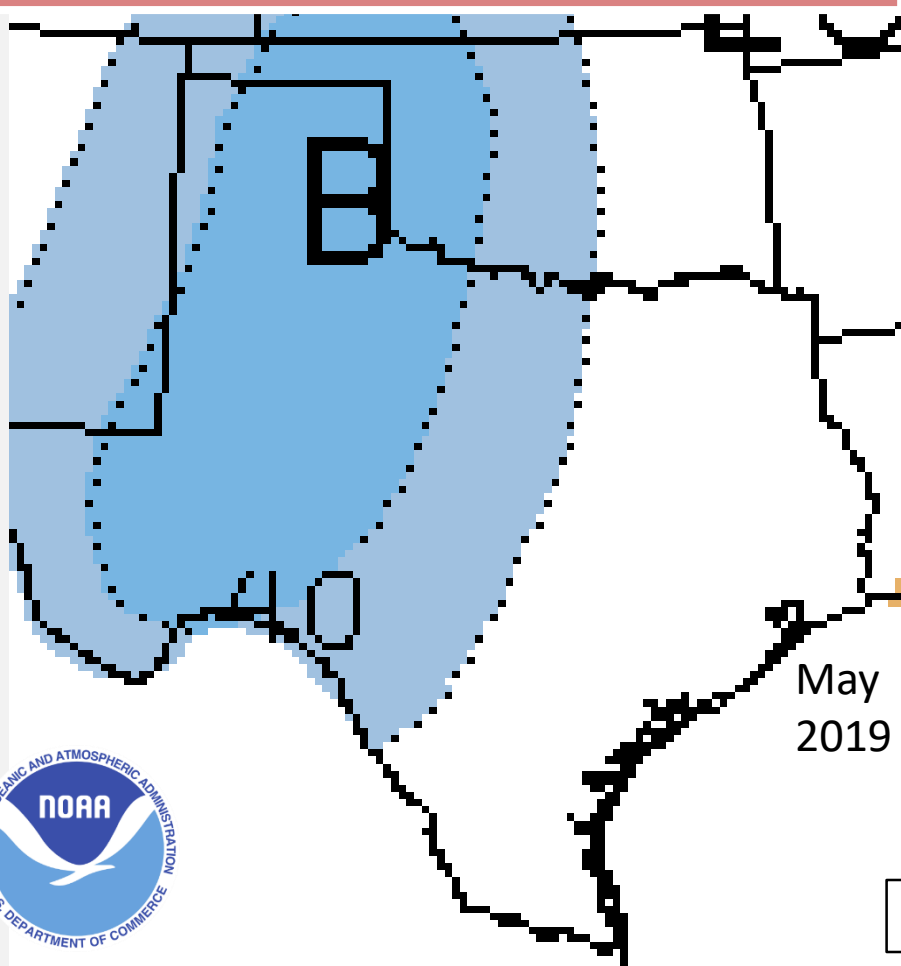
# May Outlook

For May, the latest outlook from the Climate Prediction Center (CPC) calls for a 33.3% chance of below normal temperatures, a 33.3% chance of above normal temperatures and a 33.3% chance of normal temperatures across Southeast Texas. This is otherwise known as an "equal chance" (EC) of above normal, normal, and below normal temperatures. The precipitation outlook also calls for a 43% chance of above normal precipitation, a 33% chance of near normal precipitation and a 24% chance of below normal precipitation.

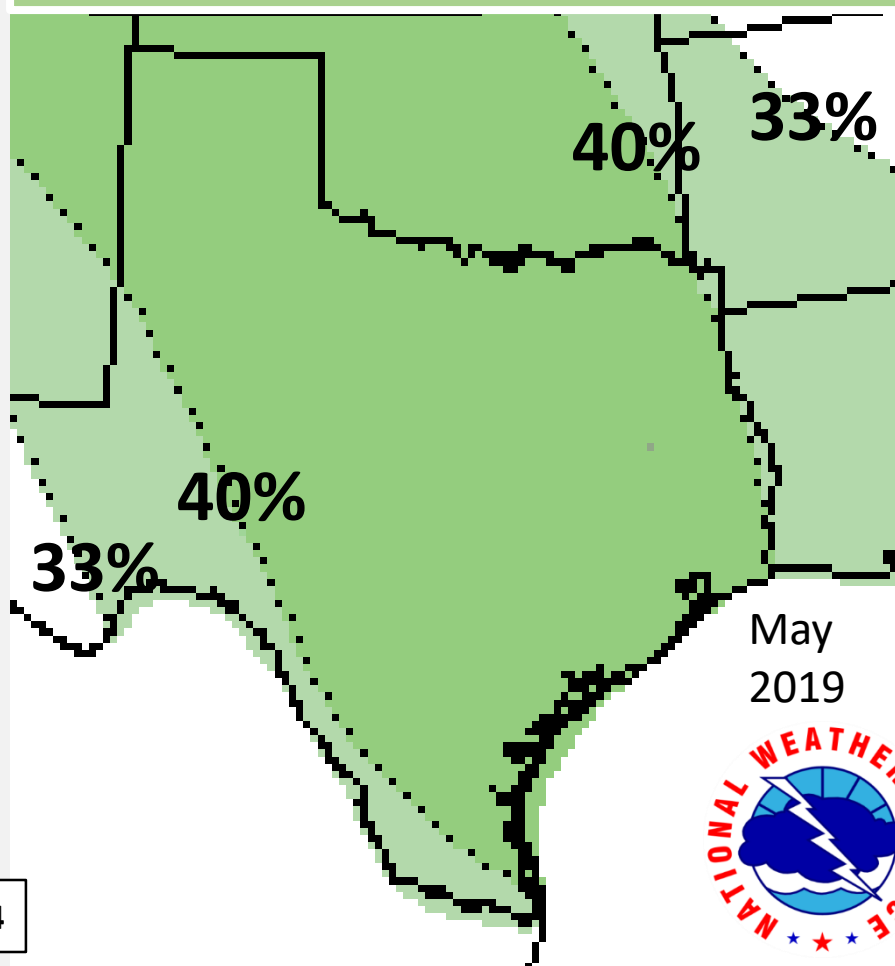
Site	Average Temp(°F)	Normal High (°F)	Normal Low (°F)
Galveston	77.6	83.0	72.3
Houston Hobby	77.0	85.4	68.7
City of Houston	76.9	86.3	67.6
College Station	76.2	85.8	66.6

Site	Normal Monthly Precipitation (in.)
Galveston (GLS)	4.32
Houston Hobby (HOU)	4.75
City of Houston (IAH)	5.09
College Station (CLL)	4.33

## Temperature Outlook



## Precipitation Outlook





# Climate Primary Site History

## Galveston (GLS)

*Records for Galveston are from observations at the following locations: 67-69 Strand (April 1, 1871 - Aug 31, 1874); 23rd and the Strand (Sep 1, 1874 - July 29, 1878), 1.75 miles WSW of the previous location; the Custom House at Bath Street and the Strand (July 30, 1878 - May 8, 1882); Colorado and Santa Fe Railroad Building at 25th and the Strand (May 9, 1882 - March 14, 1883); back to the Custom House which later became the Cotton Exchange Building (March 15, 1883 - June 24, 1898), about a 1/3 of a mile E of the previous Custom House location; The Levy Building at 2223 Market Street (June 25, 1898 - Nov 26, 1900); the Trust Building at Tremont and Post Office Streets (Nov 27, 1900 - June 24, 1946), one-quarter mile south of the Levy Building; the U.S. Post Office Building at 601 Rosenberg (June 25, 1946 - 1994); Scholes Field (January 1995 to present).*

## Houston Hobby (HOU)

*Records are based upon observations beginning in August 1931.*

## City of Houston (IAH)

*Records for the City of Houston are from observations at the following locations: Cotton Station from July 1881 through September 1909, Stewart Building at Preston and Fannin from September 1909 through February 1926, Shell Building at Texas and Fannin from March 1926 through August 1938, Federal Building at Franklin and Fannin from August 1938 through May 1969, Intercontinental Airport from June 1969 to the present .*

## College Station (CLL)

*Records from 1893 through July 1951 are based on observations taken at the Texas Agriculture Experiment COOP Station main farm located 6 miles southwest of College Station. Records from August 1951 through the present are based on observations taken at Easterwood Field. Normal temperatures are calculated from 1981 to 2000 period.*

