

NWS Houston, Texas December 2022 Regional Climate Summary

Produced by Jimmy Fowler

...Above Normal Temperatures Despite Pre-Christmas Cold Snap...

A strong Arctic cold front moved through the 23rd of the month bringing much below normal temperatures for a few days, but this was not enough to outweigh an extremely warm start and end to the month. On average, the region finished about two degrees warmer than normal with 16 daily temperature records set. Drought improvements continued with just some Abnormally Dry to Moderate Drought conditions experience west of the Brazos River and in the far northern reaches of the region.

Photo Credit:
NWS HGX Meteorologist
Cameron Batiste

Table of Contents

Page Number	Page Title
1	Cover
2	Table of Contents
3	By the Numbers
4	Precipitation Summary
5	Precipitation Graph
6	Precipitation Imagery
7	Temperature Summary
8 – 9	Temperature Charts
10 – 14	Daily Record Reports
15	Drought Monitor
16	Next Month Outlook
17	ENSO Review
18	Climate Primary Site History



By the Numbers: December 2022

Location (records started)	Average Temp	Ranking	Total Rainfall	Ranking
City of Houston, TX (1888)	57.1°F	34 th Warmest	3.88"	58 th Wettest
Houston Hobby, TX (1930)	59.3°F	10 th Warmest	2.71"	32 nd Driest
City of Galveston, TX (1871)	60.3°F	20 th Warmest	3.01"	76 th Driest
City of College Station, TX (1882)	55.1°F	28 th Warmest	5.54"	21 st Wettest
Palacios, TX (1943)	58.8°F	20 th Warmest	3.30"	36 th Wettest
Huntsville, TX (1997)	55.9°F	4 th Warmest	6.93"	4 th Wettest
Sugar Land, TX (2000)	58.8°F	4 th Warmest	1.77"	6 th Driest
Conroe, TX (1997)	55.0°F	5 th Warmest	9.30"	Wettest on Record
Clover Field (Pearland), TX (1997)	58.2°F	8 th Warmest	2.57"	9 th Driest
David Wayne Hooks (Tomball), TX (1998)	57.0°F	5 th Warmest	2.92"	12 th Driest
Angleton, TX (1998)	58.6°F	6 th Warmest	2.33"	12 th Driest
League City, TX (1990)	58.2°F	6 th Warmest	6.75"	6 th Wettest



Precipitation

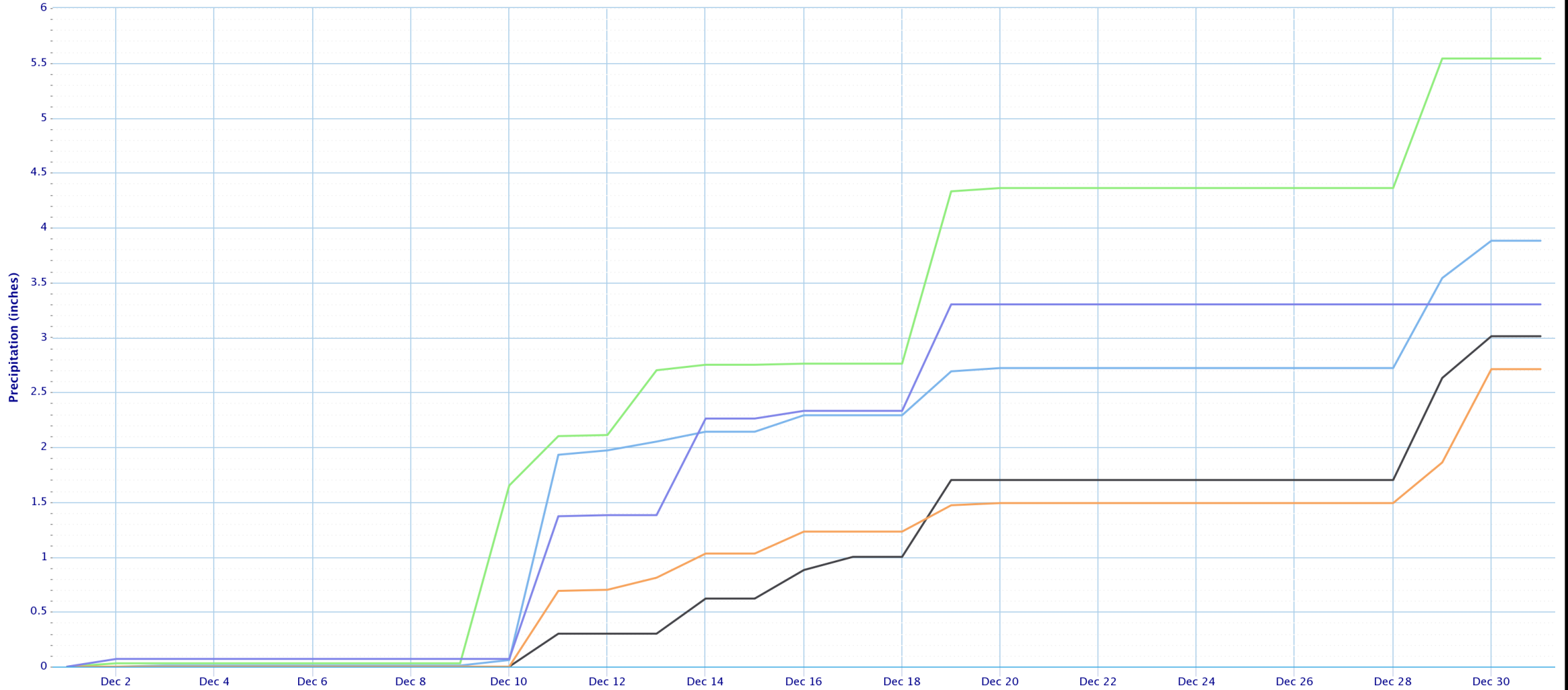
Location	Total Precipitation (in.)	Departure from Normal (in.)	Number of Thunder Days	Maximum Daily Precipitation (in./date)	
Galveston (GLS)	3.01	-1.22	5	0.93	29 th
Houston Hobby (HOU)	2.71	-1.63	5	0.85	30 th
City of Houston (IAH)	3.88	-0.15	6	1.87	11 th
College Station (CLL)	5.54	+1.83	5	1.62	10 th
Palacios (PSX)	3.30	+0.32	6	1.30	11 th



Precipitation Accumulation Graph

Accumulated Precipitation

Green/black diamonds represent subsequent/missing values



City of Houston

City of Galveston

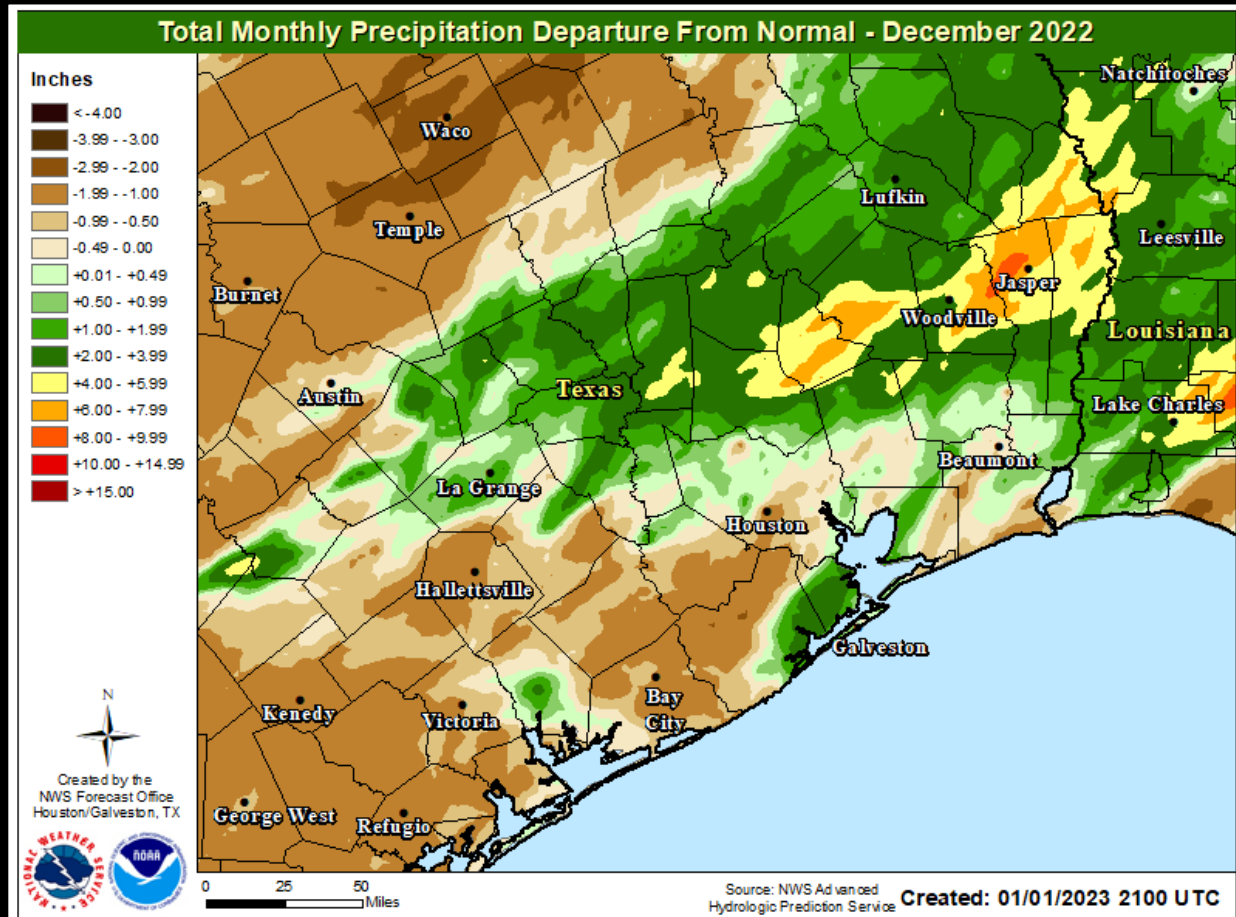
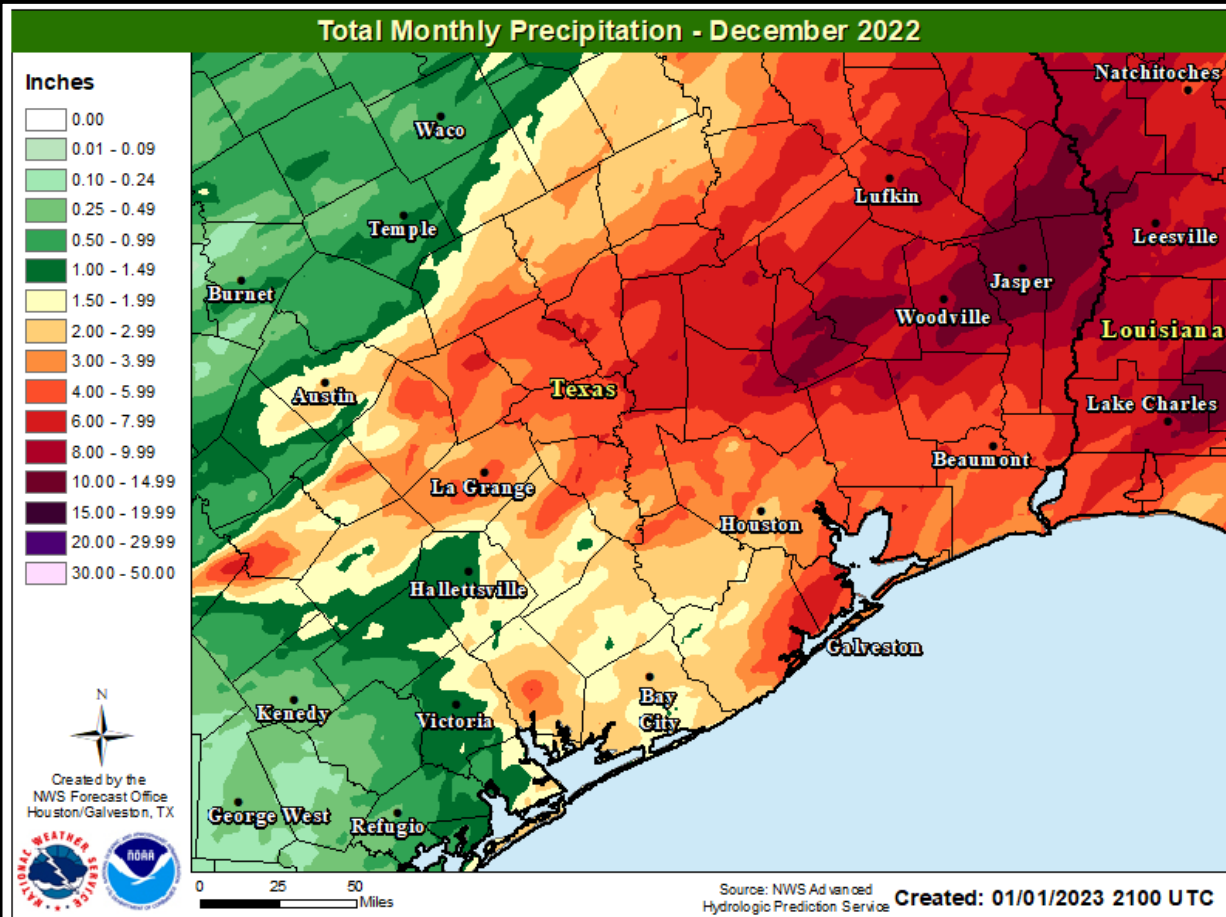
City of College Station

Houston-Hobby

Palacios



Precipitation Maps

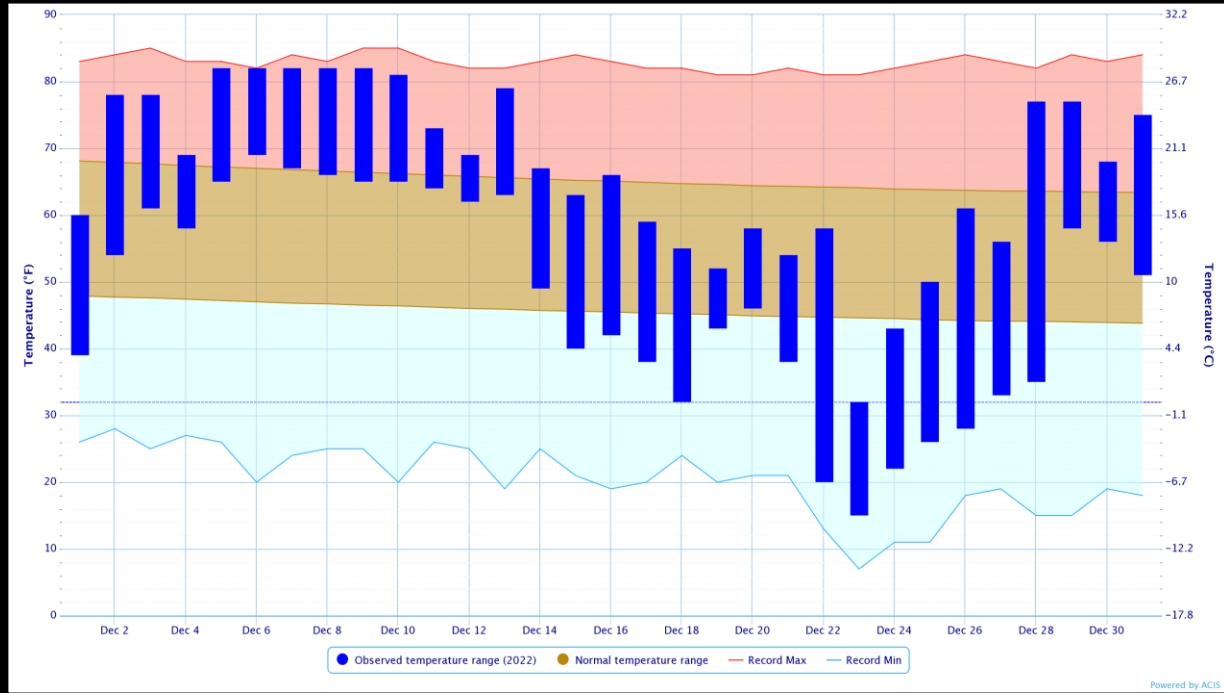


Temperature

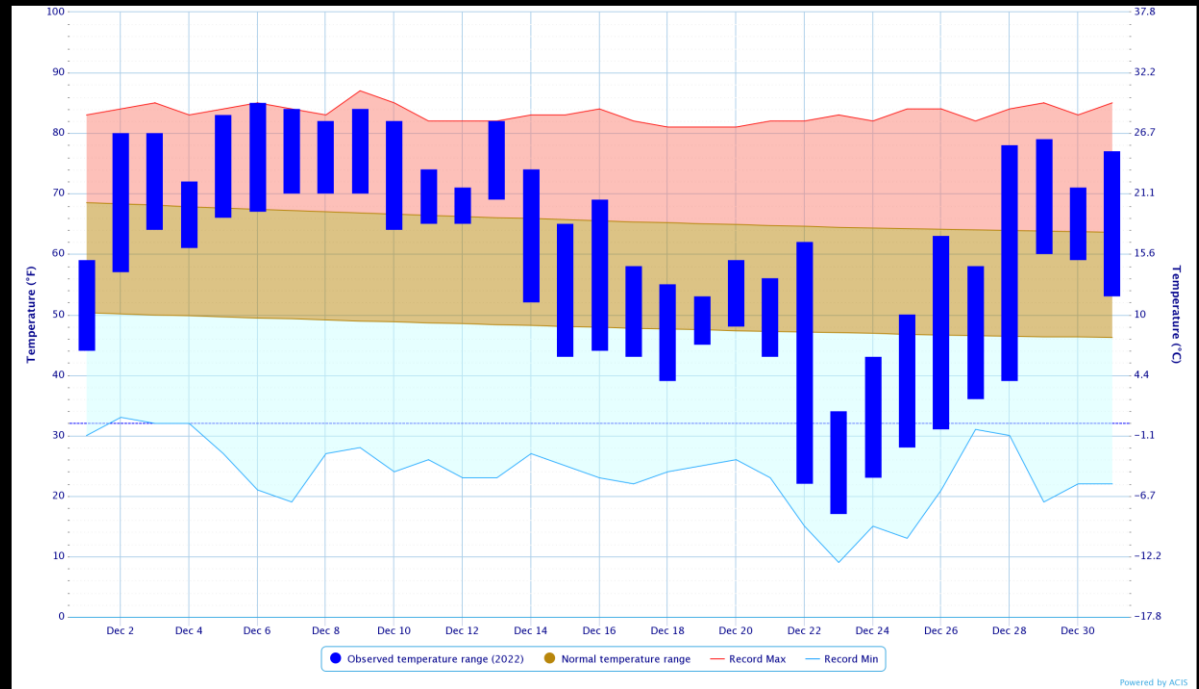
Location	Average High Temp (F)	Average Low Temp (F)	Average Temp (F)	Departure From Normal Average (F)	Maximum Temperature (F)	Minimum Temperature (F)
Galveston (GLS)	66.8	53.8	60.3	+1.8	81 on the 3 rd	21 on the 23 rd
Houston Hobby (HOU)	68.5	50.2	59.3	+2.4	85 on the 6 th	17 on the 23 rd
City of Houston (IAH)	66.7	47.4	57.1	+1.7	82 on the 7 th 8 th & 9 th	15 on the 23 rd
College Station (CLL)	64.5	45.8	55.1	+2.0	82 on the 7 th & 8 th	14 on the 23 rd
Palacios (PSX)	67.5	50.0	58.8	+0.8	81 on the 10 th	18 on the 23 rd

Temperature Charts

City of Houston

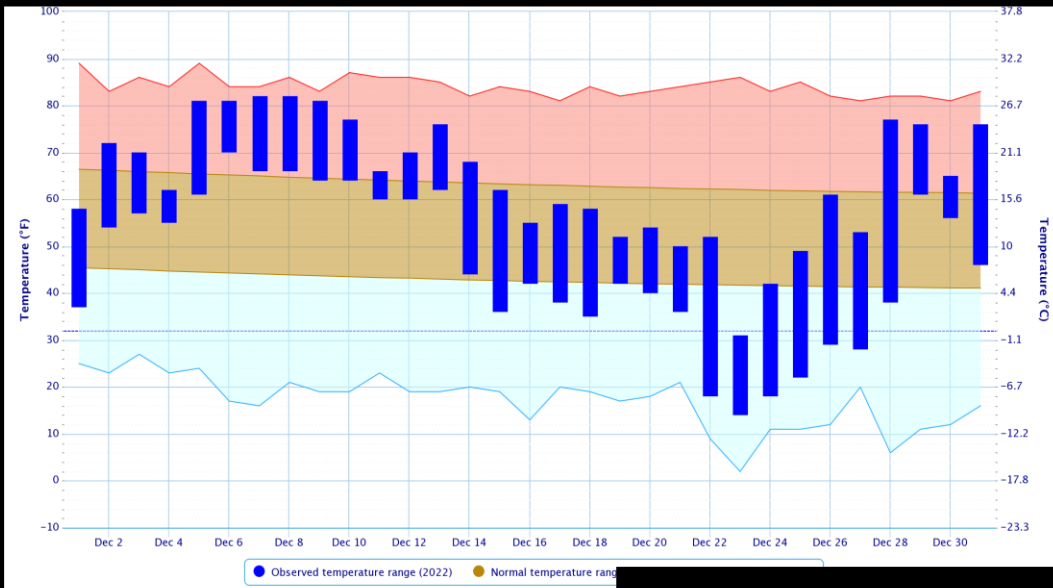


Houston-Hobby

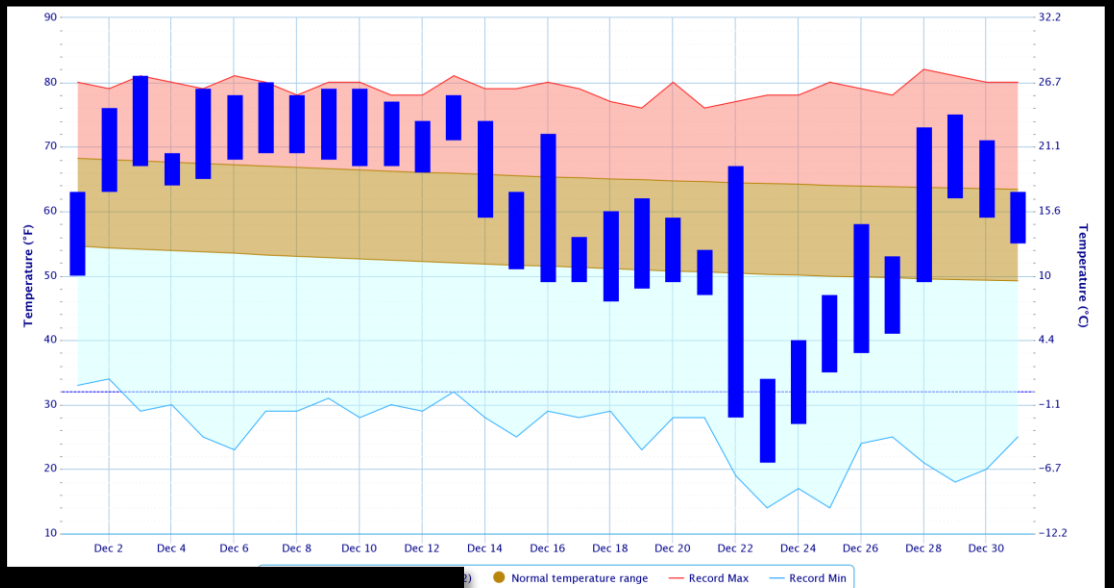


Temperature Charts

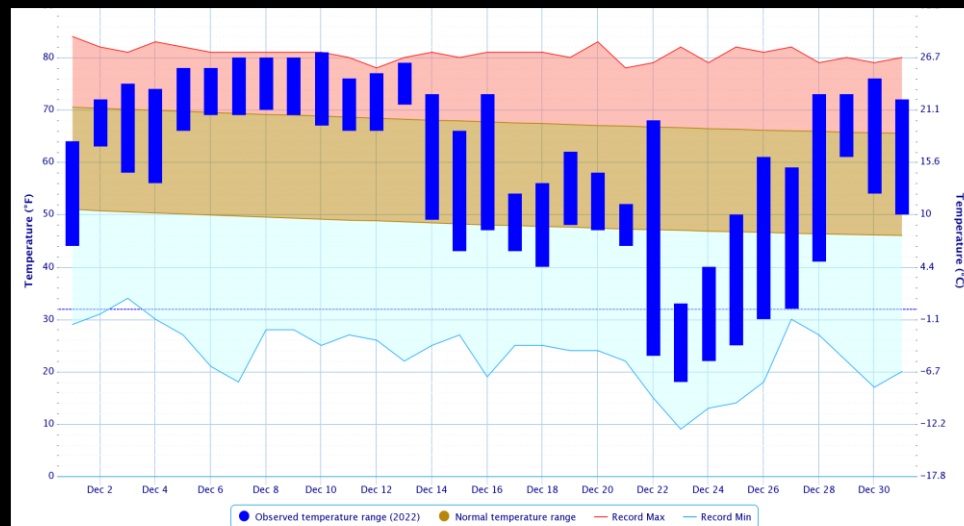
City of College Station



City of Galveston

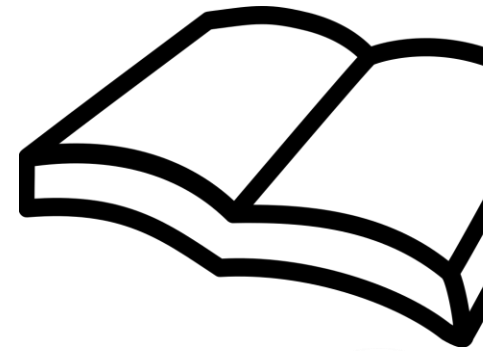


Palacios



Daily Record Reports – City of College Station

Date	Record Type	New Record	Previous Record
No Daily Records			



High Max

Low Max

Precip

Key

Snow

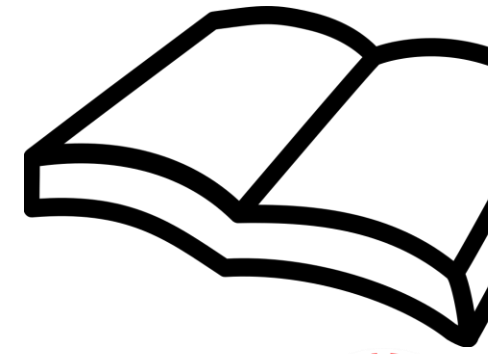
High Min

Low Min



Daily Record Reports – City of Houston

Date	Record Type	New Record	Previous Record
26 th	High Maximum	82°F - T	82°F in 1951
26 th	High Minimum	69°F - T	69°F in 1951



Key

High Max

Low Max

Precip

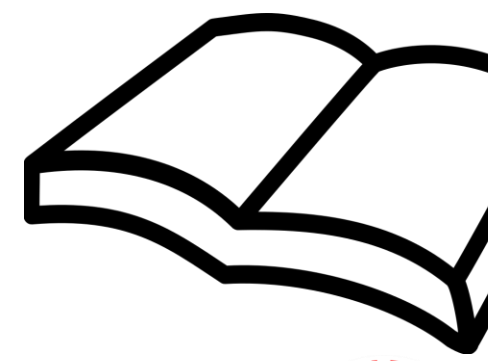
Snow

High Min

Low Min

Daily Record Reports – Houston-Hobby

Date	Record Type	New Record	Previous Record
6 th	High Maximum	85°F	81°F in 1998
6 th	High Minimum	67°F – T	67°F in 2001
7 th	High Maximum	84°F	82°F in 2007
7 th	High Minimum	70°F	68°F in 1966
13 th	High Maximum	82°F	81°F in 1995
13 th	High Minimum	69°F – T	69°F in 1984



Key

High Max

Low Max

Precip

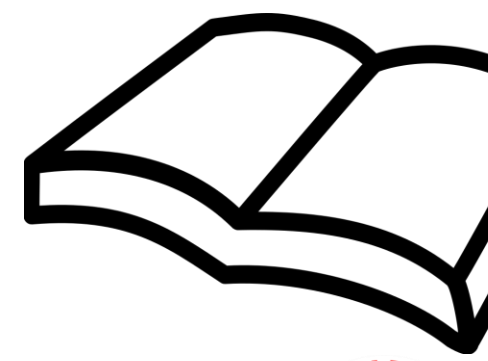
Snow

High Min

Low Min

Daily Record Reports – City of Galveston

Date	Record Type	New Record	Previous Record
3 rd	High Maximum	81°F	79°F in 1983
5 th	High Maximum	79°F	78°F in 2021
7 th	High Maximum	80°F	79°F in 1998
7 th	High Minimum	69°F – T	69°F in 1924
8 th	High Maximum	78°F – T	78°F in 2012
13 th	High Minimum	71°F	69°F in 1933



Key

High Max

Low Max

Precip

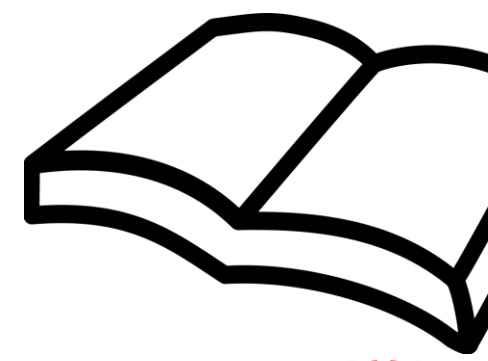
Snow

High Min

Low Min

Daily Record Reports – Palacios

Date	Record Type	New Record	Previous Record
8 th	High Minimum	70°F	69°F in 2007
10 th	High Maximum	81°F – T	81°F in 1993



Key

High Max

Low Max

Precip

Snow

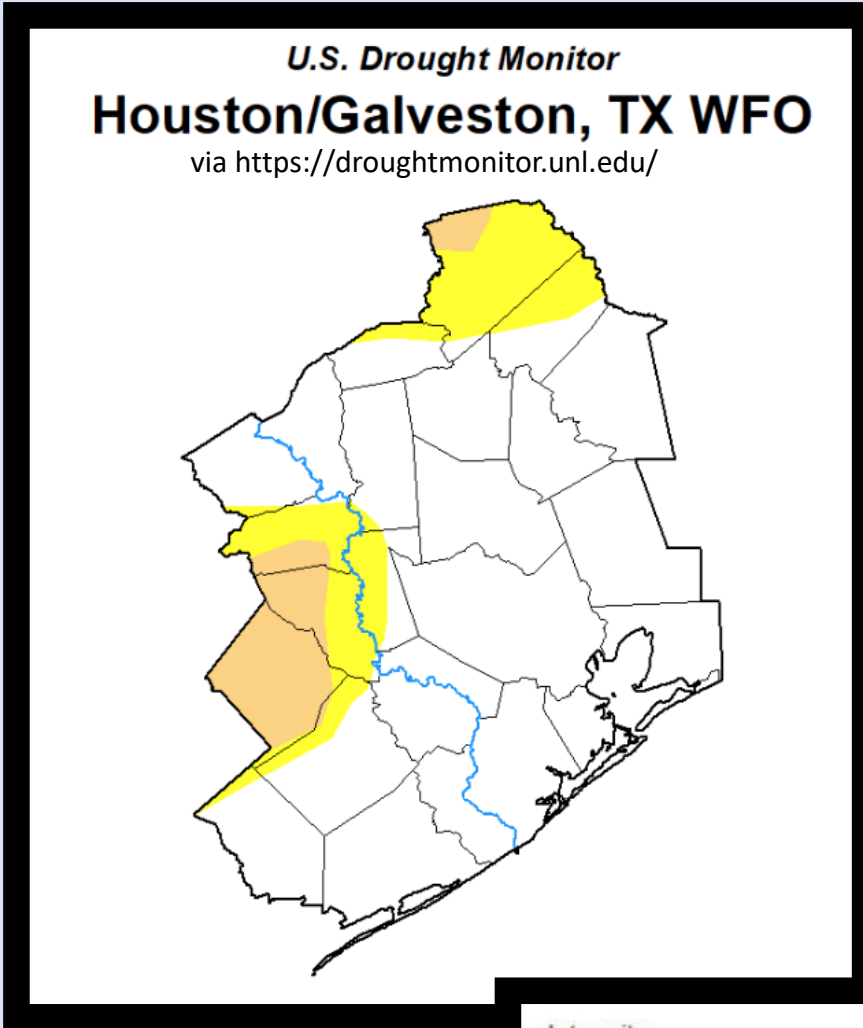
High Min

Low Min

Drought Monitor

As of January 3rd

Continued rainfall led to drought improvements across the region. Most of the region is drought free, but some areas of Abnormally Dry (D0) and Moderate Drought (D1) linger across the far northern and western parts of the area.



Intensity:

None	D2 Severe Drought
D0 Abnormally Dry	D3 Extreme Drought
D1 Moderate Drought	D4 Exceptional Drought

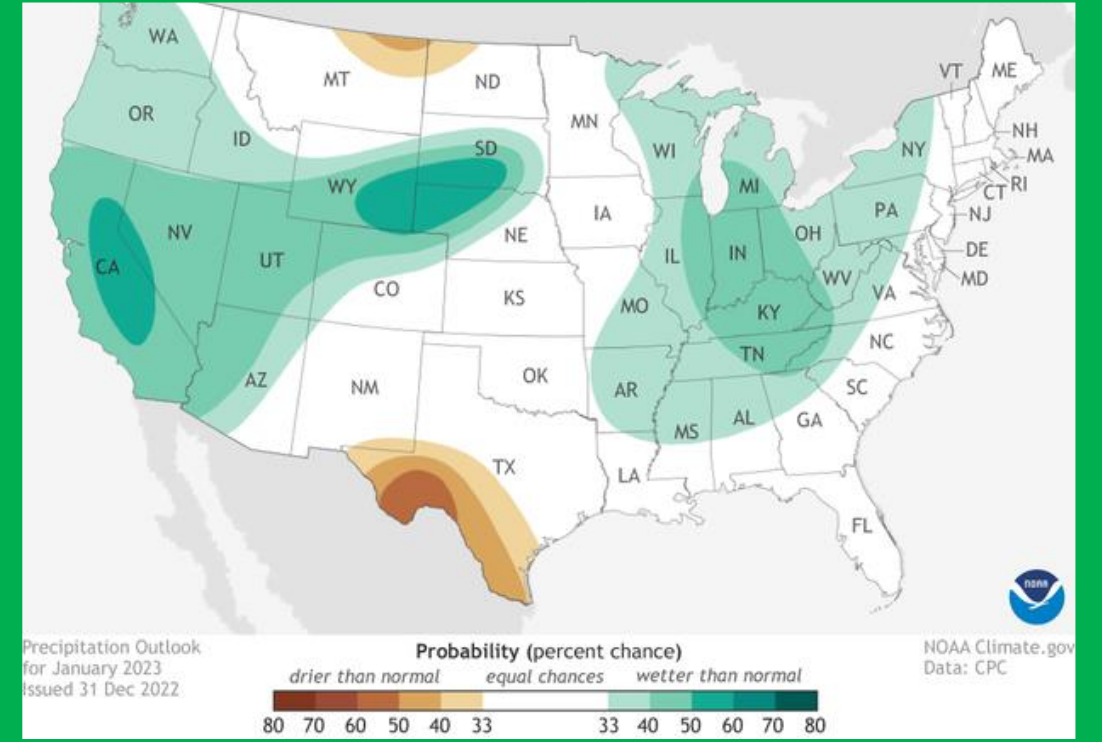
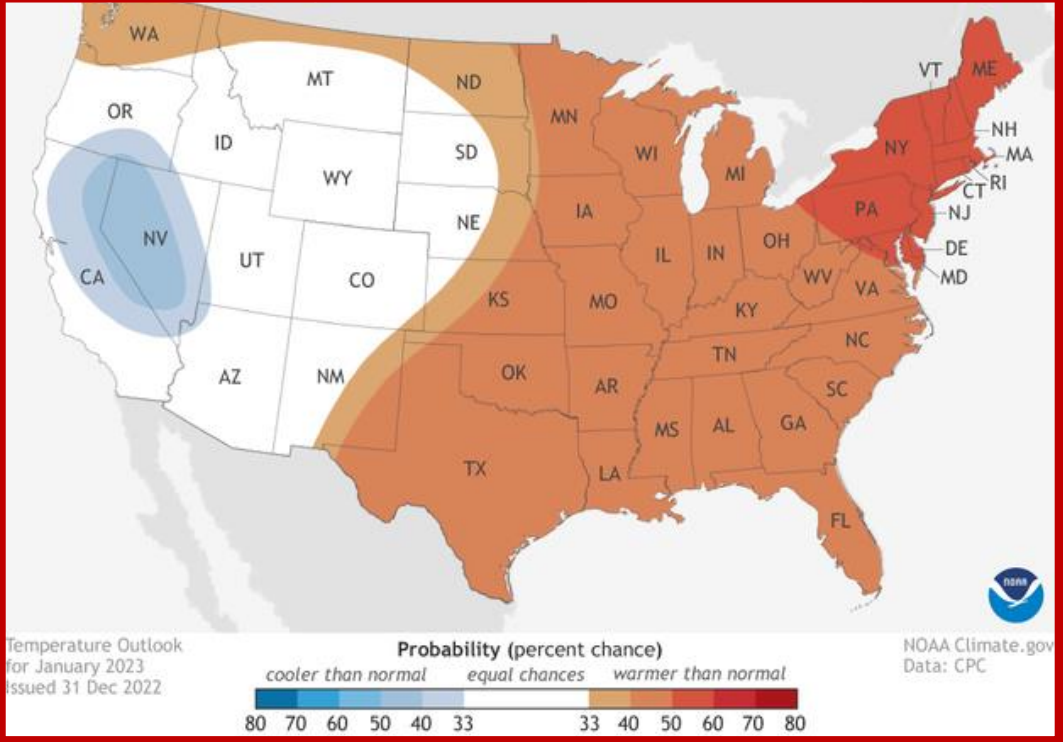
The Drought Monitor focuses on broad-scale conditions. Local conditions may vary. For more information on the Drought Monitor, go to <https://droughtmonitor.unl.edu/About.aspx>



January Outlook

Location	Average Temp(°F)	Normal High (°F)	Normal Low (°F)
Galveston	56.0	63.2	48.9
Houston Hobby	55.0	63.8	46.1
City of Houston	53.8	63.8	43.7
College Station	51.5	61.7	41.3
Palacios	55.6	65.2	46.0

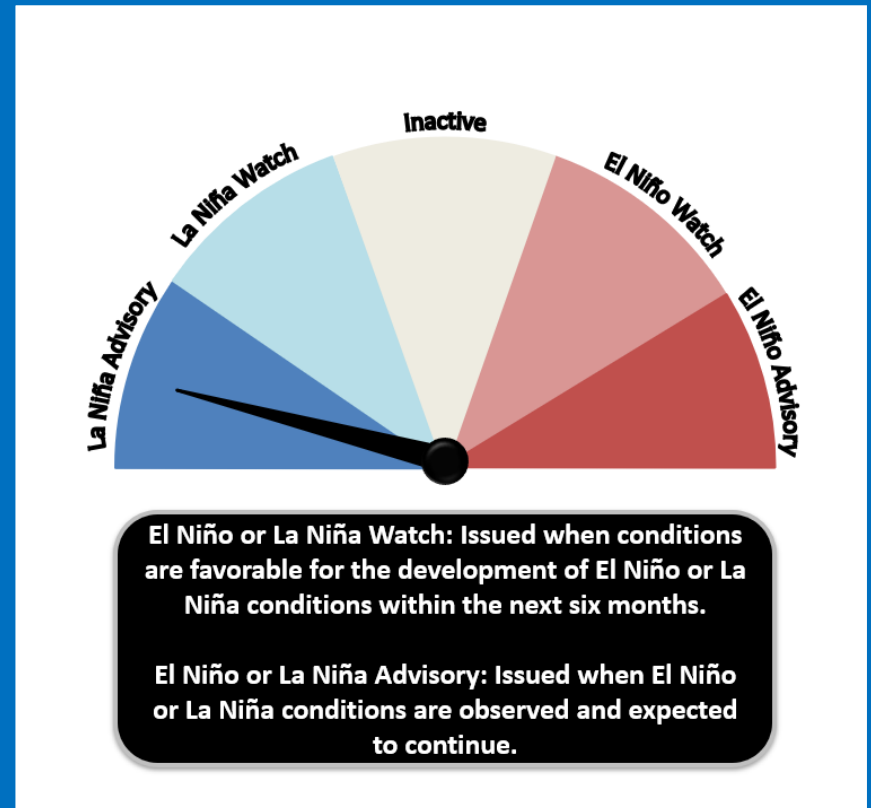
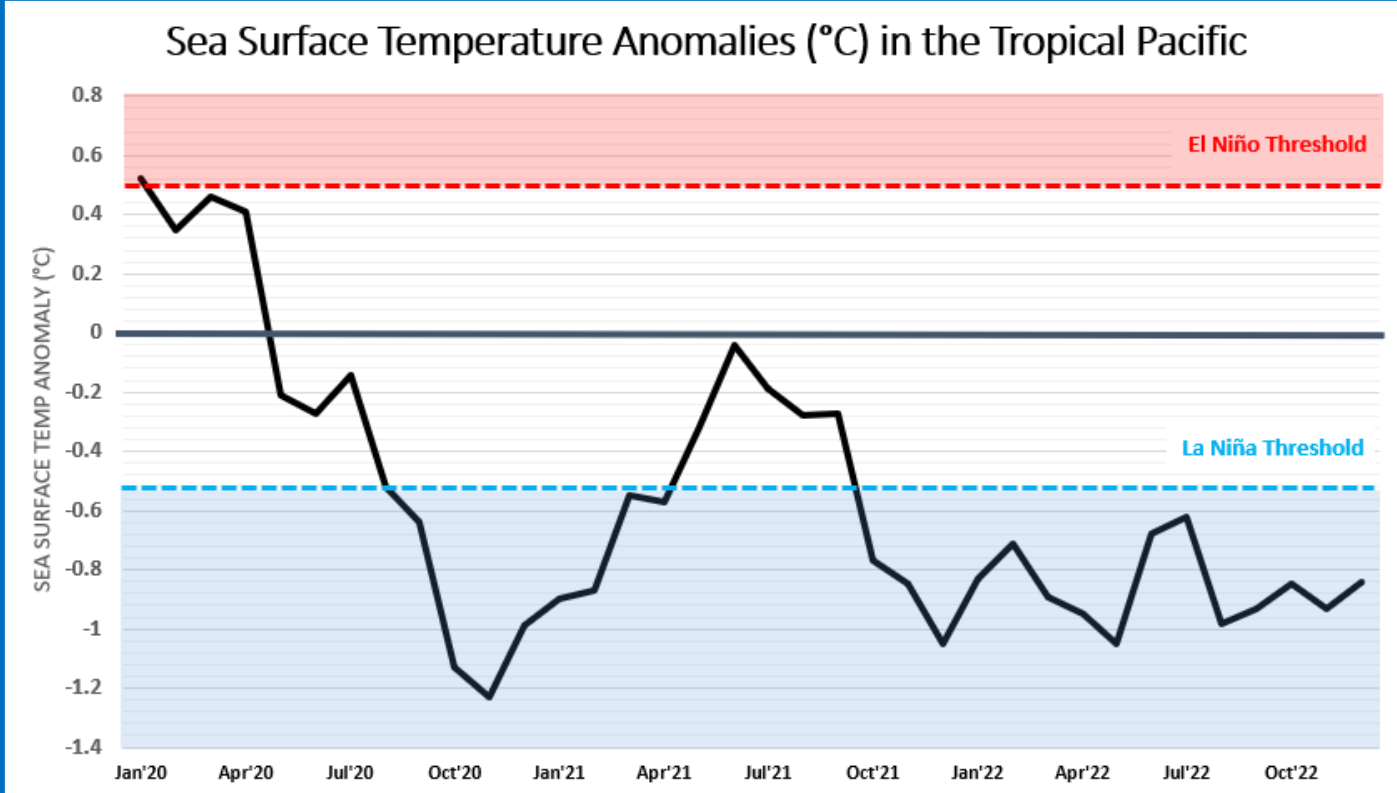
Location	Normal Monthly Precipitation (in.)
Galveston	4.30
Houston Hobby	4.09
City of Houston	3.76
College Station	3.43
Palacios	3.25



Current ENSO Phase: **La Niña**

The Climate Prediction Center's ENSO Forecast: **La Niña Advisory**

- La Niña conditions are expected to continue through the Winter.
- A transition from La Niña to ENSO-neutral is anticipated during the February-April 2023 season



Climate Primary Site History

Galveston (GLS)

Records for Galveston are from observations at the following locations: 67-69 Strand (April 1, 1871 - Aug 31, 1874); 23rd and the Strand (Sep 1, 1874 - July 29, 1878), 1.75 miles WSW of the previous location; the Custom House at Bath Street and the Strand (July 30, 1878 - May 8, 1882); Colorado and Santa Fe Railroad Building at 25th and the Strand (May 9, 1882 - March 14, 1883); back to the Custom House which later became the Cotton Exchange Building (March 15, 1883 - June 24, 1898), about a 1/3 of a mile E of the previous Custom House location; The Levy Building at 2223 Market Street (June 25, 1898 - Nov 26, 1900); the Trust Building at Tremont and Post Office Streets (Nov 27, 1900 - June 24, 1946), one-quarter mile south of the Levy Building; the U.S. Post Office Building at 601 Rosenberg (June 25, 1946 - 1994); Scholes Field (January 1995 to present).

City of Houston (IAH)

Records for the City of Houston are from observations at the following locations: Cotton Station from July 1881 through September 1909, Stewart Building at Preston and Fannin from September 1909 through February 1926, Shell Building at Texas and Fannin from March 1926 through August 1938, Federal Building at Franklin and Fannin from August 1938 through May 1969, Intercontinental Airport from June 1969 to the present.

College Station (CLL)

Records from 1893 through July 1951 are based on observations taken at the Texas Agriculture Experiment COOP Station main farm located 6 miles southwest of College Station. Records from August 1951 through the present are based on observations taken at Easterwood Field.

Houston Hobby (HOU)

Records are based upon observations beginning in August 1931.

Palacios (PSX)

Records are based upon observations beginning in February 1943.

