



July 2013 Climate Summary for SOUTHEAST TEXAS WFO Houston/ Galveston



Temperatures across southeast Texas were near normal for July 2013. This was due in large part to a period of rainy weather conditions which occurred over much of the middle part of the month. Even with the rainfall, the month ended up on a dry note for most locations.

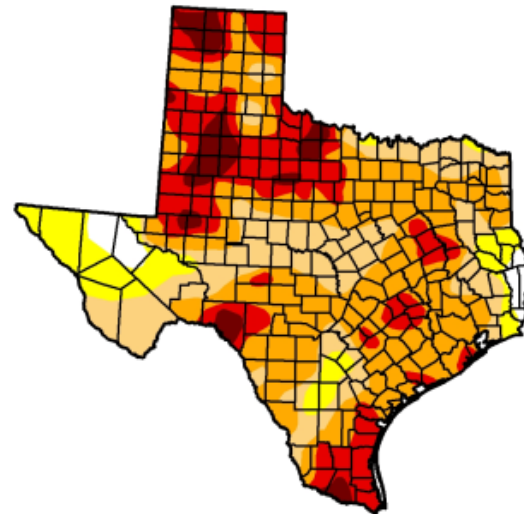
An upper level ridge of high pressure brought a very warm and dry start to July. The temperatures

U.S. Drought Monitor Texas

July 30, 2013
Valid 7 a.m. EST

Drought Conditions (Percent Area)

	None	D0-D4	D1-D4	D2-D4	D3-D4	D4
Current	2.83	97.17	87.69	65.36	25.97	5.65
Last Week (07/23/2013 map)	0.62	99.38	92.54	67.42	28.31	6.35
3 Months Ago (04/30/2013 map)	1.45	98.55	91.99	73.73	36.42	10.09
Start of Calendar Year (01/01/2013 map)	3.04	96.96	87.00	65.39	35.03	11.96
Start of Water Year (09/25/2012 map)	9.13	90.87	78.73	57.41	24.91	5.18
One Year Ago (07/24/2012 map)	12.35	87.65	70.36	34.16	10.25	0.78



Intensity:

- D0 Abnormally Dry
- D1 Drought - Moderate
- D2 Drought - Severe
- D3 Drought - Extreme
- D4 Drought - Exceptional

The Drought Monitor focuses on broad-scale conditions. Local conditions may vary. See accompanying text summary for forecast statements.

<http://droughtmonitor.unl.edu>

Figure 1: U.S. drought monitor



Released Thursday, August 1, 2013
Brian Fuchs, National Drought Mitigation Center

cooled at the start of the second week as the high pressure area drifted westward and an upper level low pressure formed overhead. Another upper level high pressure area then brought above normal temperatures through the end of the second week of the month. A series of upper level low pressure areas then moved over the state and brought a 7 to 14 day period of rainy and cooler conditions. The month then ended on a dry and hot note as the subtropical high pressure ridge developed over the state.

Although some relief came with the rainy period over the middle part of the month, moderate to extreme drought conditions were prevalent over the entire area by the end of the month (Figure 1). As of July 30th, extreme drought was depicted by the U.S. drought monitor over all or a portion of Austin, Brazoria, Burleson, Colorado, Galveston, Houston, Jackson, Matagorda, and Washington counties.

Houston/Galveston, TX (HGX): July, 2013 Monthly Departure from Normal Precipitation
Valid at 8/1/2013 1200 UTC- Created 8/3/13 21:42 UTC

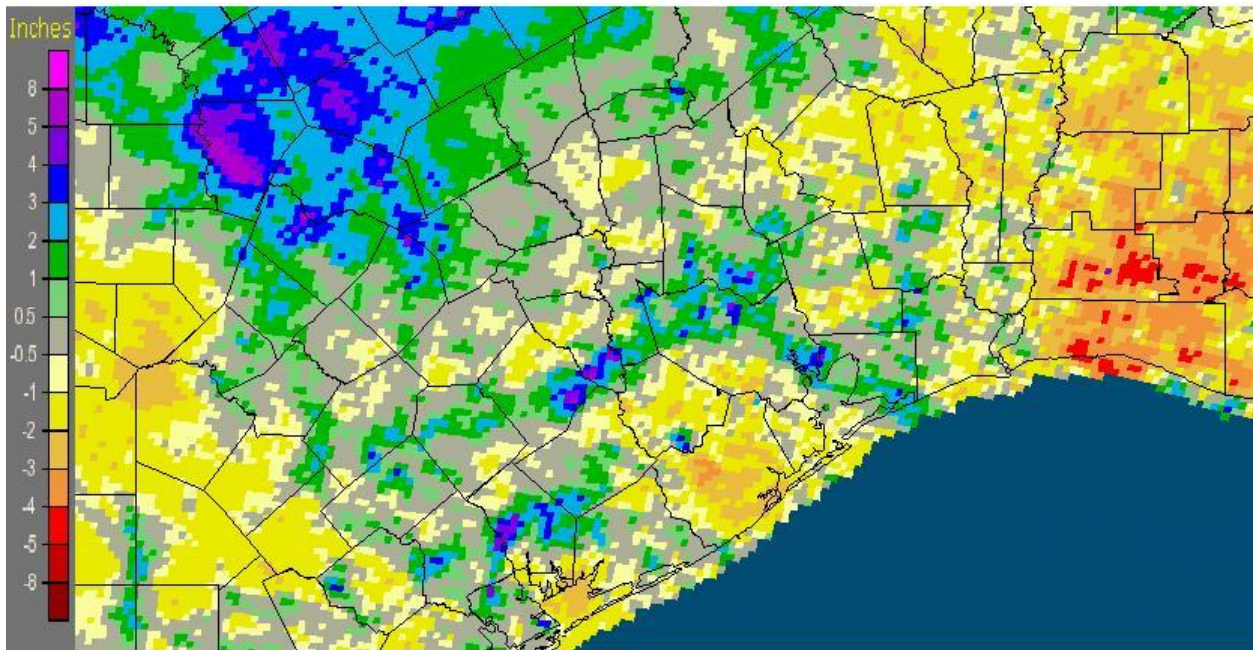


Figure 2: July 2013 departure from normal precipitation (<http://water.weather.gov/precip/>)

Figure 2 illustrates how most of southeast Texas was below normal in rainfall for the month of July. The greens and blues represent above normal while the yellow and oranges represent below normal.

July was a month of near normal temperatures. The chart below (Figure 3) illustrates how all first order climate sites were at least a degree within their normal temperature value (normal period: 1981-2010).

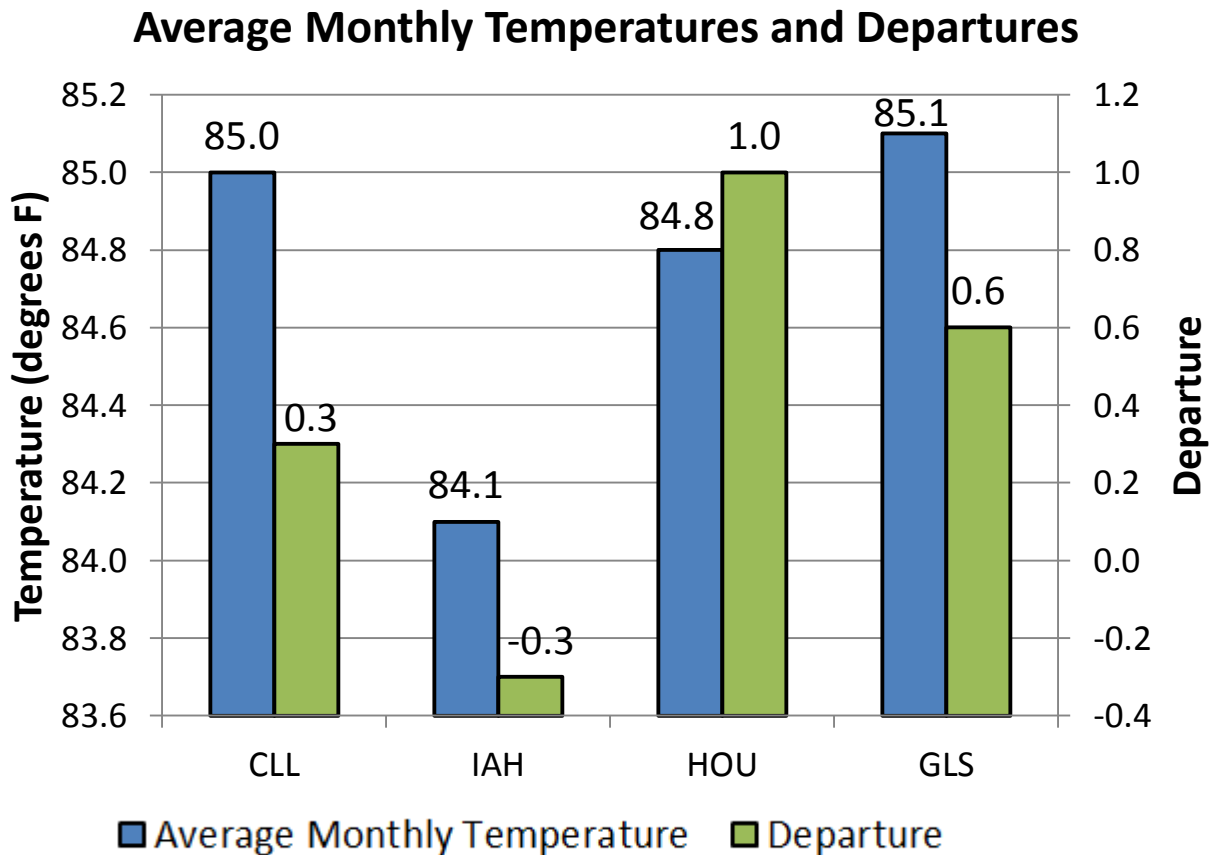


Figure 3: Average monthly temperatures and departures

