

June 2014 Climate Summary for SOUTHEAST TEXAS WFO Houston/ Galveston



The monthly average temperature in June was slightly warmer than the 30 year normal (1981-2000), ending the eight consecutive months of below normal temperatures. Houston's average for the month was 82.5 degrees which was 0.1 degree warmer than normal, College Station's average for the month was 82.4 degrees which was 0.8 degrees warmer than normal, and Galveston's average for the month was 83.3 degrees which was 1.1 degrees warmer than normal. The average high temperatures for the month were all cooler than normal, but the average low temperatures were considerably warmer than normal, fueling the slightly warmer monthly average temperature.

Average # of 95 degree days

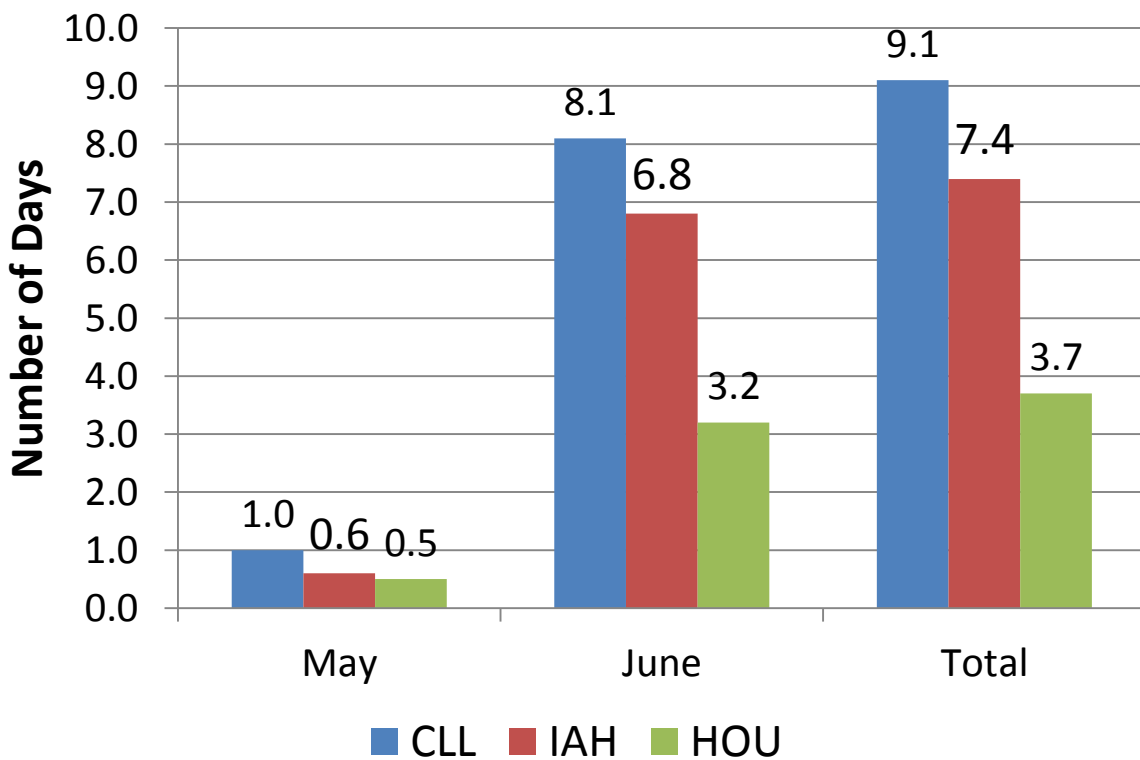


Figure 1: Average number of days with high temperatures reaching 95 degrees (1981- 2010). Through the end of June, none of the three stations have reached 95 degrees.

During the month, the high temperature failed to reach 95 degrees at College Station (CLL), the city of Houston (IAH) and Houston Hobby (HOU). The last year the temperature failed to reach 95 degrees during June was 1999 for CLL, 2001 for IAH and 2007 for HOU. On average, the first day to reach 95 degrees is June 2nd for CLL, June 10th for IAH and June 21st for HOU. Figure 1 shows the average number of days that the high temperature reaches 95 degrees in the months of May and June for the period of 1981- 2010.

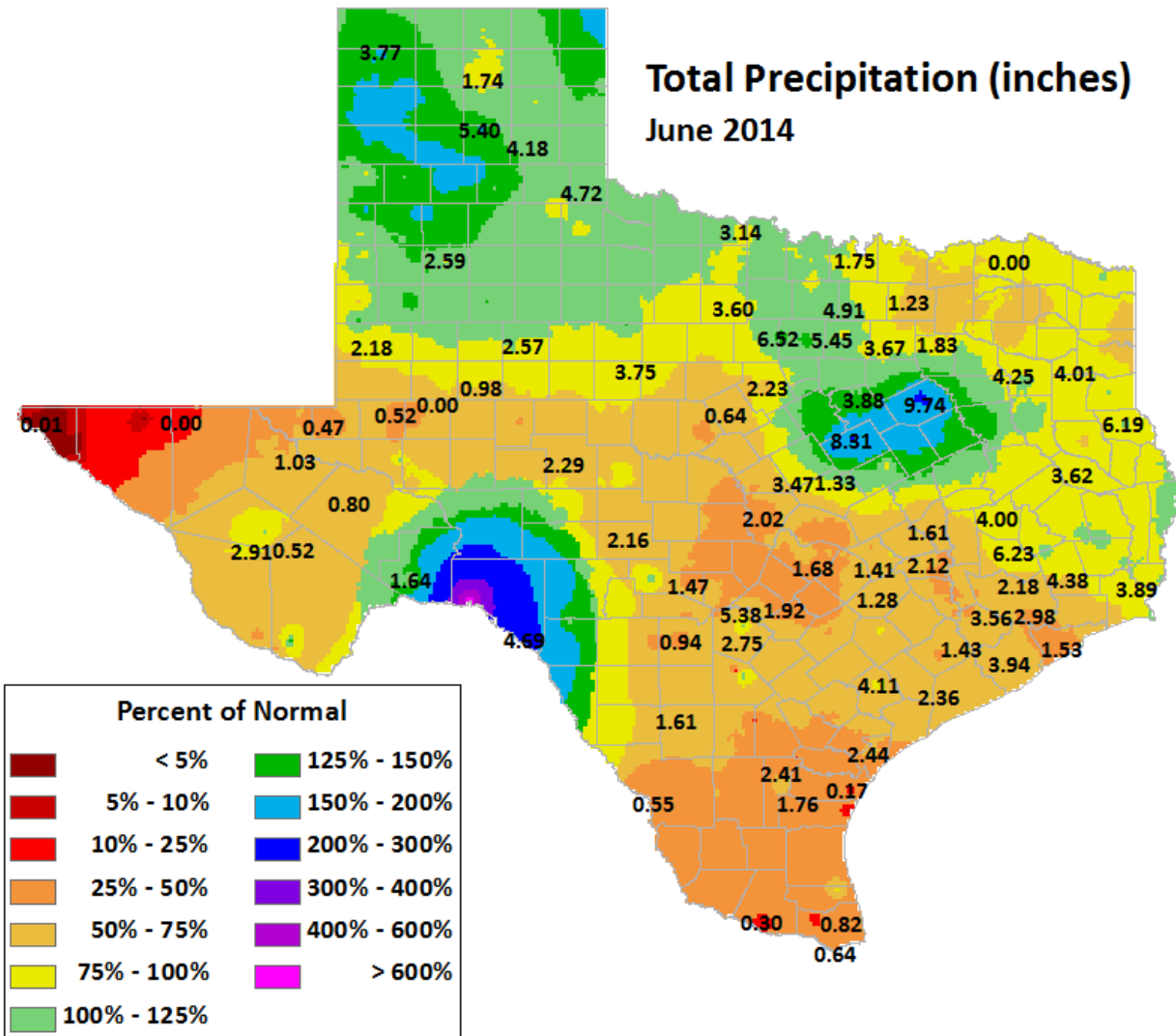


Figure 2: Total June 2014 precipitation across the state of Texas.
 (<http://climatexas.tamu.edu/images/bulletins/prcp/2014-june.png>)

Bouts of heavy rain during the second half of the month seemed to miss most of the rain gages as most sites reported below normal rainfall. Totals for the month were 1.61 inches at CLL (2.84 inches below normal), 2.18 inches at IAH (3.75 inches below normal), 2.93 inches at HOU (4.17 inches below normal) and 1.53 inches at GLS (2.27 inches below normal). The heaviest rainfall total reported across the county warning area was 7.81 inches at Cleveland. The location with the least rainfall was Somerville with only 0.67 inches of rain (Figure 2).

NOAA's National Weather Service

Heat Index

Temperature (°F)

	80	82	84	86	88	90	92	94	96	98	100	102	104	106	108	110
40	80	81	83	85	88	91	94	97	101	105	109	114	119	124	130	136
45	80	82	84	87	89	93	96	100	104	109	114	119	124	130	137	
50	81	83	85	88	91	95	99	103	108	113	118	124	131	137		
55	81	84	86	89	93	97	101	106	112	117	124	130	137			
60	82	84	88	91	95	100	105	110	116	123	129	137				
65	82	85	89	93	98	103	108	114	121	128	136					
70	83	86	90	95	100	105	112	119	126	134						
75	84	88	92	97	103	109	116	124	132							
80	84	89	94	100	106	113	121	129								
85	85	90	96	102	110	117	126	135								
90	86	91	98	105	113	122	131									
95	86	93	100	108	117	127										
100	87	95	103	112	121	132										

Likelihood of Heat Disorders with Prolonged Exposure or Strenuous Activity

- Caution
- Extreme Caution
- Danger
- Extreme Danger

Figure 3: Heat index values.
 (<http://nws.noaa.gov/os/heat/index.shtml>)

The first day of summer was June 21st which means that hot weather is just around the corner for Southeast Texas. It is important to remember some important heat safety tips as we approach the height of summer.

- 1) Stay hydrated by drinking plenty of water (non-alcoholic and decaffeinated drinks)
- 2) Avoid exercising in the heat
- 3) Spend more time in air conditioned rooms during peak heating
- 4) Dress for summer
- 5) Never leave children or pets unattended in the back seat of the vehicle

National Weather Service
 Houston/ Galveston, TX Weather Forecast Office
 1353 FM 646 Suite 202
 Dickinson, TX 77539
 281-337-5074
 Questions/ Comments: sr-hgx.webmaster@noaa.gov

