

# November 2012 Climate Summary for SOUTHEAST TEXAS WFO Houston/ Galveston



The dry weather pattern continued across Southeast Texas during the month of November. Rainfall was limited and the month ended with below normal rainfall amounts being recorded at the major climate sites.

November was a warm month with all climate sites but one reporting above normal temperatures.

## Average Year-to-Date Temperature

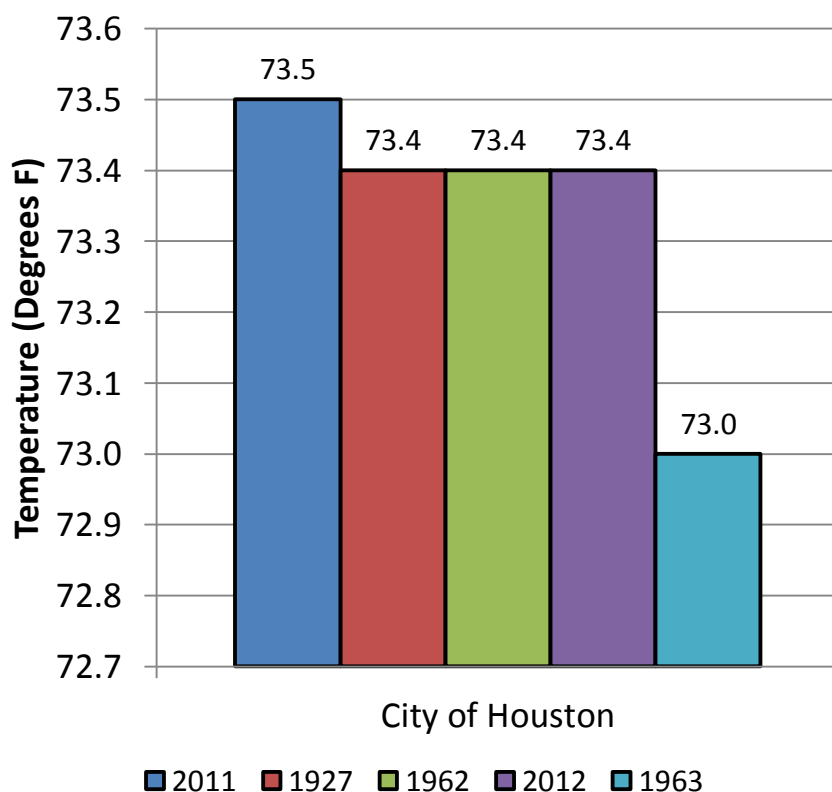


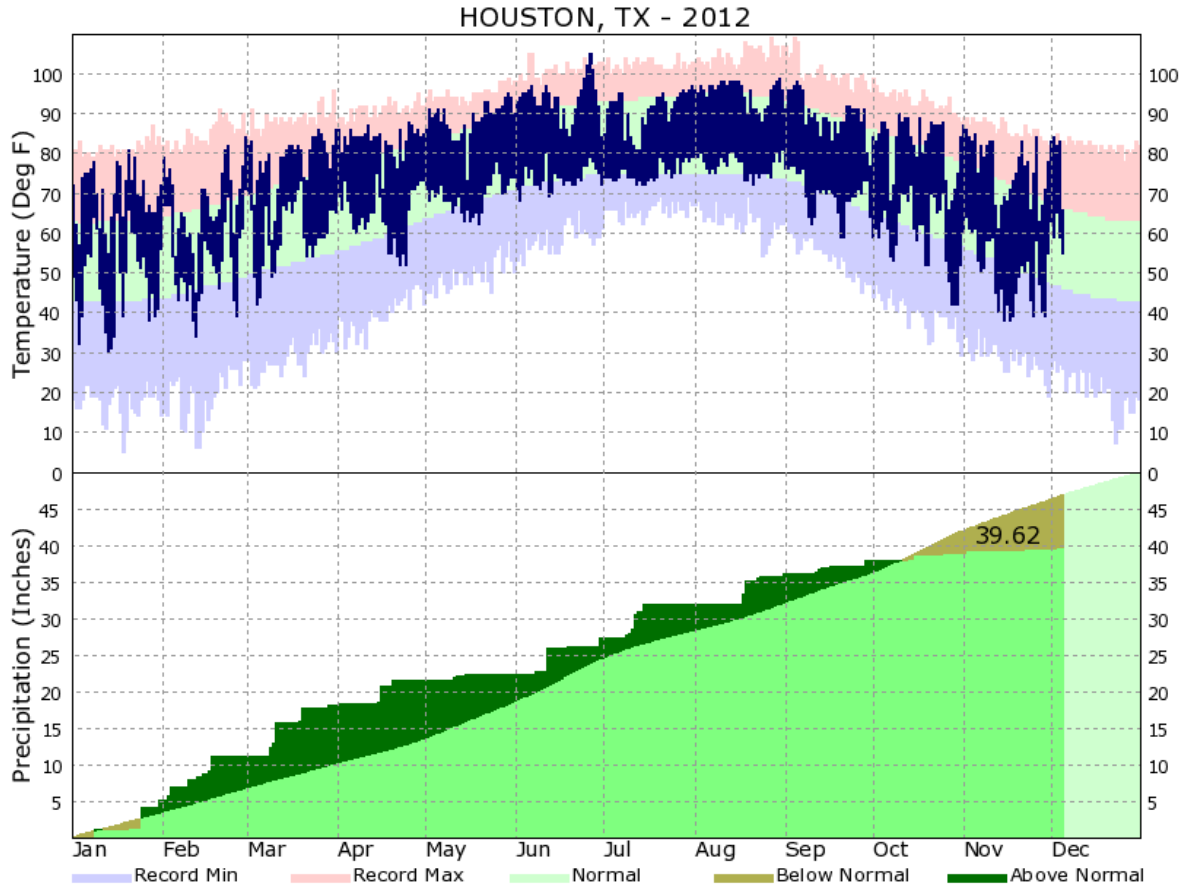
Figure 1: Top five warmest years for the City of Houston

The exception was Conroe which ended the month with a normal average temperature. Otherwise, averages ranged from 0.6 degrees above normal for the City of Houston and Angleton to 2.5 degrees above normal at Palacios. Comparing the first order station data for November 2012 to November 2011 reveals that College Station and Hobby Airport were both warmer this November than one year ago. On the flip side, the City of Galveston and the City of Houston both experienced a cooler month than in November 2011.

From January 1<sup>st</sup> through November 31<sup>st</sup>,

2012 is still the warmest year on record for the city of Galveston. 2012 is in second place to 2011 at both Hobby Airport and College Station, but 2012 has now slipped to fourth place behind 2011, 1962, and 1927 for the City of Houston (Figure 1).

Cold fronts moved through the area on the 4<sup>th</sup>, the 11<sup>th</sup>, the 23<sup>rd</sup>, the 24<sup>th</sup>, and the 26<sup>th</sup>. Most first and second order stations in the Houston/Galveston National Weather Service county warning



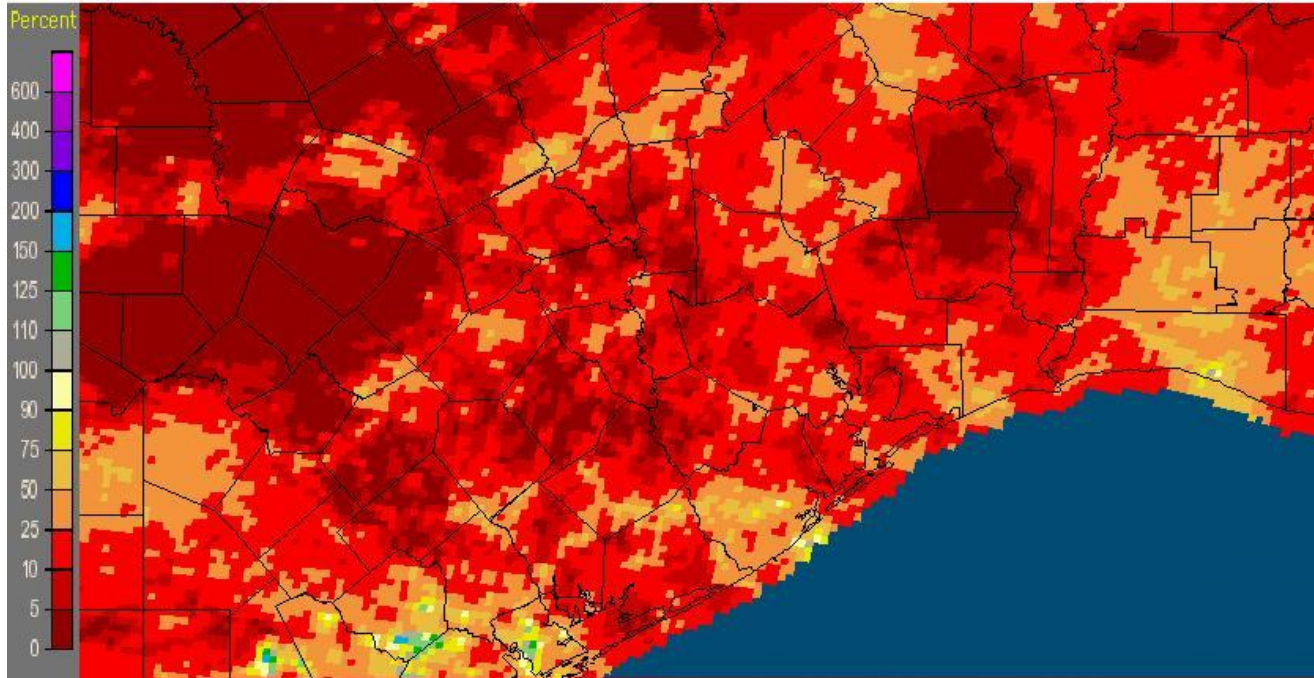
*Figure 2: Yearly Climate Summary for the City of Houston (IAH)*

area received less than one inch of total rainfall for the entire month. Exceptions were noted at the Conroe Airport, the National Weather Service Office in League City, and the Angleton Airport where the monthly totals were 1.54", 1.75", and 3.64" respectively. Figure 2 illustrates the temperature swings this past November due to various weather systems. This figure also demonstrates how the dry conditions in October and now November have led to the year being below normal for precipitation. It is important to note that the City of Houston was above normal for most of the year.

The limited rainfall caused the abnormally dry conditions of October to worsen. As of December 4<sup>th</sup>, the U.S. drought monitor rated Southeast Texas to be in moderate (D1) to severe drought (D2) conditions. The severe drought conditions were noted generally along and east of a line from Livingston to Houston to Sugar Land, and generally along and west of a line from Madisonville to Navasota to Brenham.

The final graphic (Figure 3) sheds light on how much of Southeast Texas experienced so little rainfall for November. Most locations saw less than 25% of their normal precipitation for the month, while some areas saw less than 10% of their normal precipitation.

Houston/Galveston, TX (HGX): November, 2012 Monthly Percent of Normal Precipitation  
Valid at 12/1/2012 1200 UTC- Created 12/3/12 21:41 UTC



*Figure 3: November 2012 percent of normal precipitation*

National Weather Service  
Houston/ Galveston, TX Weather Forecast Office  
1353 FM 646 Suite 202  
Dickinson, TX 77539  
281-337-5074  
Questions/ Comments: [sr-hgx.webmaster@noaa.gov](mailto:sr-hgx.webmaster@noaa.gov)

