



The Official Southeast Texas

# HURRICANE GUIDE

2025

Strong Winds



Storm Surge



Flooding



Tornadoes



## Prepare for All Hazards!

[WEATHER.GOV/HOUSTON](https://www.weather.gov/houston)

# Table of Contents

<a href="#">Hurricane Names</a>	3	<a href="#">Contact Info &amp; Supplies</a>	20
<a href="#">Are You Ready for the Hurricane Season? / NHC Cone Graphics</a>	4-5	<a href="#">Hurricane Supply Kit</a>	21
<a href="#">About Hurricanes</a>	6	<a href="#">Final Checklists</a>	22
<a href="#">Hurricane Surf &amp; Rip Currents</a>	7	<a href="#">Forecast Information</a>	23-25
<a href="#">Storm Surge</a>	8-14	<a href="#">Local Tropical Page</a>	26
<a href="#">Inland Flooding</a>	15	<a href="#">Tourist Safety Guide</a>	27
<a href="#">Tornadoes &amp; Destructive Winds</a>	16	<a href="#">Evacuation Information</a>	28-29
<a href="#">Hurricane Preparation</a>	17	<a href="#">Texas Emergency Assistance Registry</a>	30
<a href="#">Additional Preparations</a>	18	<a href="#">Returning Home</a>	31-32
<a href="#">Insurance Tips</a>	19	<a href="#">Emergency Contact Information</a>	33-37

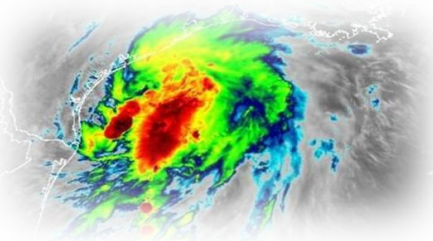
# Hurricane Names

Have you ever wondered how a hurricane gets its name? The National Hurricane Center actually does not name tropical storms and hurricanes. Instead, the names are established by the World Meteorological Organization and then rotated every six years. If a storm is too deadly or costly, the name will be retired. If all names in a season are used up, then a supplemental list of new names will be used instead of the Greek alphabet.

2025	2026	2027	2028	2029
Andrea	Arthur	Ana	Alex	Arlene
Barry	Bertha	Bill	Bonnie	Bret
Chantal	Cristobal	Claudette	Colin	Cindy
Dexter	Dolly	Danny	Danielle	Don
Erin	Edouard	Elsa	Earl	Emily
Fernand	Fay	Fred	Farrah	Franklin
Gabrielle	Gonzalo	Grace	Gaston	Gert
Humberto	Hanna	Henri	Hermine	Harold
Imelda	Isaias	Imani	Idris	Idalia
Jerry	Josephine	Julian	Julia	Jose
Karen	Kyle	Kate	Karl	Katia
Lorenzo	Leah	Larry	Lisa	Lee
Melissa	Marco	Mindy	Martin	Margot
Nestor	Nana	Nicholas	Nicole	Nigel
Olga	Omar	Odette	Owen	Ophelia
Pablo	Paulette	Peter	Paula	Philippe
Rebekah	Rene	Rose	Richard	Rina
Sebastien	Sally	Sam	Shary	Sean
Tanya	Teddy	Teresa	Tobias	Tammy
Van	Vicky	Victor	Virgine	Vince
Wendy	Wilfred	Wanda	Walter	Whitney

For a printable hurricane tracking map, please click on this [link](#).

# Are You Ready?



Take this assessment to find out if you're ready for this year's hurricane season!

	Yes	No
Do you know where you and your family would go if you have to evacuate?	<input type="checkbox"/>	<input type="checkbox"/>
Do you have emergency plans for your pet(s)? Most shelters do not allow pets and many animal clinics will close if they are also in harm's way.	<input type="checkbox"/>	<input type="checkbox"/>
If you take medicine, do you have a 7-day supply of medications or prescription drugs?	<input type="checkbox"/>	<input type="checkbox"/>
Do you have flashlights? Don't forget batteries!	<input type="checkbox"/>	<input type="checkbox"/>
Do you have at least a 3-day supply of drinking water and basic, non-perishable foods available? Allow one gallon of water per person per day.	<input type="checkbox"/>	<input type="checkbox"/>
Will you have cash available if power outages disrupt normal services?	<input type="checkbox"/>	<input type="checkbox"/>
Do you already have plywood or other materials to protect your windows?	<input type="checkbox"/>	<input type="checkbox"/>
Is your insurance policy updated for new valuables or housing improvements? Consider taking photos or videos of your belongings.	<input type="checkbox"/>	<input type="checkbox"/>
Do you have your family's personal records and documents stored in a waterproof container?	<input type="checkbox"/>	<input type="checkbox"/>
Do you have a generator? Even a tropical storm can disrupt power to your home for several days.	<input type="checkbox"/>	<input type="checkbox"/>

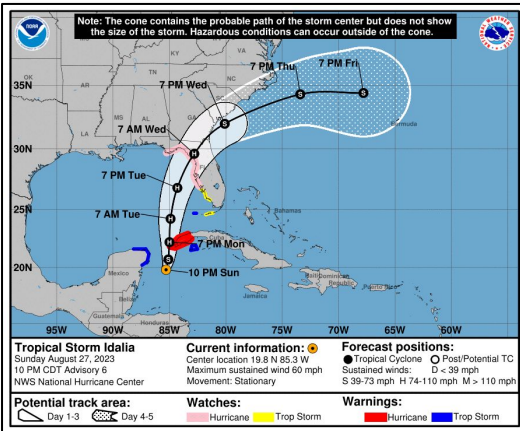
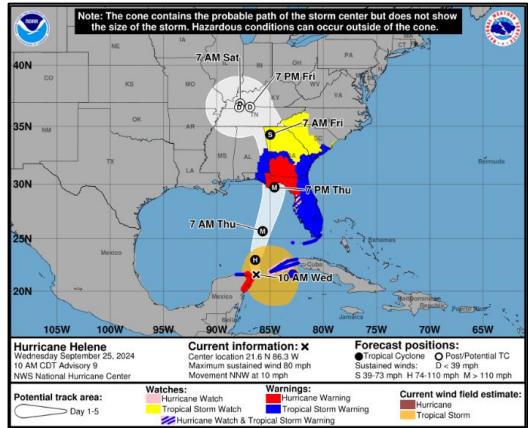
How many YES responses do you have?

- |           |   |
|-----------|---|
| 8 or more | Very good! You're more prepared than most people!                           |
| 5 to 7    | Not bad. Look into how you can improve this.                                |
| 4 or less | Let's get serious about preparing now! Don't wait until the storm develops. |

# NHC Forecast Cone Graphic

A new look of the National Hurricane Center's 3 and 5 day operational cone graphic was implemented last year (August 2024).

You may be asking yourself, what has changed? This revised graphic now includes inland U.S. tropical storm and hurricane watches and warnings. The primary purpose being to better visualize the wind hazard risk inland. Keep in mind that there may be times during the hurricane season that this graphic will not be immediately available with each advisory update as it will take some time to compile all of the watch and warning information.



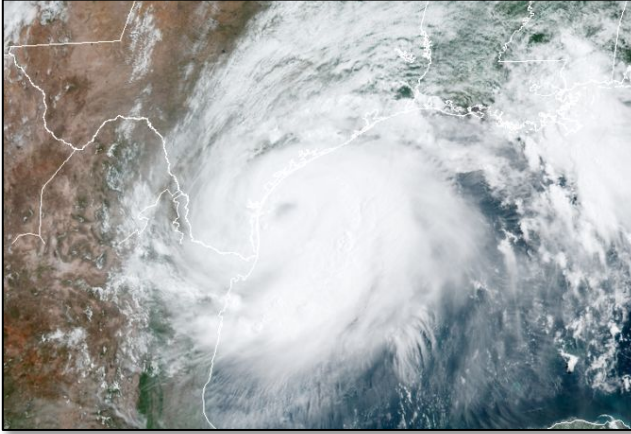
Other than the annual minor adjustment of the cone size based on recent NHC track forecast errors, the cone graphic will stay the same as it was newly implemented last year. The cone graphic will now always depict both coastal and inland tropical storm and hurricane watches and warnings, along with the track cone itself.

Users are encouraged to provide feedback to the NHC. This

feedback will help the NHC make any changes necessary to the graphic in order to enhance and add clarity to tropical threats both along the coast and inland. Hopefully you all find this new style extremely beneficial as we navigate through the 2025 hurricane season.

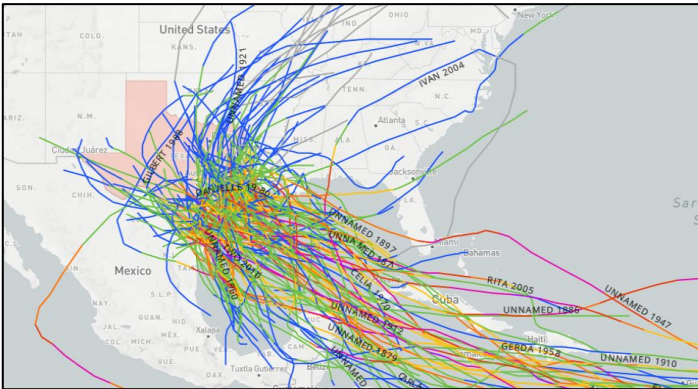


# About Hurricanes



Hurricanes form over warm ocean waters, like those found in the Gulf of America. The hurricane season starts June 1 and ends November 30. The peak threat for the Texas coast exists from August through September. However, hurricanes can and have struck the Texas coast during every month of the hurricane season.

*Above: High resolution satellite image of Hurricane Hanna approaching the Middle Texas Coast on July 25, 2020. Image--NOAA*



*Above: Historical perspective of hurricane landfalls in the state of Texas since 1851. 63 hurricanes have impacted the Texas Coast during this time, 22 of these were major.*

# Hurricane Surf and Rip Currents

## Hurricane Surf



- Rip Currents are the leading water hazard for all beach goers and result in over 100 drownings every year in the United States.
- Hurricane Surf is especially dangerous because the strength and size of rip currents are related to the size of the surf and wave periods.
- Along the Middle Texas Coast in 2020, Hurricane Hanna and Tropical Storm Beta contributed to two fatalities because of rip currents.
- Waves, rip currents, can be occur on Texas beaches even from a distant storm.
- Thus, when there is a tropical storm or hurricane in the Gulf, it's advised to stay out of the water!

## ***Distant Hurricanes Can Be Deadly***



Hurricanes that are far away can still create deadly rip currents and waves.



Never assume that the ocean is safe, even if the weather is nice.



For maximum safety, swim near a lifeguard.



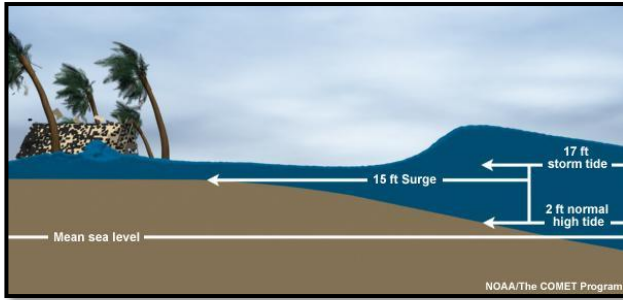
Check the forecast before you go:  
[weather.gov/beach](https://www.weather.gov/beach)



## [Rip Current Safety Page](#)

## What is Storm Surge?

Storm surge is an abnormal rise of water generated by a storm, over and above the predicted astronomical tides. This rise in water level can cause extreme flooding in coastal areas resulting in storm tides reaching up to 20 feet or more in some cases. Along the Texas coast, these flood waters can penetrate far inland depending on the elevation of the land. If the storm tide is greater than the land elevation (even if well inland) then storm surge flooding will be possible.



## Storm Surge Can Be Deadly! Here are 6 Tips to be Ready

1. Storm surge flooding is often the greatest threat to life and property from a hurricane. It poses a significant threat for drowning. A mere six inches of fast-moving flood water can knock over an adult. It takes only two feet of rushing water to carry away most vehicles.
2. Storm surge can cause water levels to rise quickly and flood large areas in just minutes, and you could be left with no time to take action if you haven't already evacuated as instructed.
3. Storm surge is not dependent on the Saffir-Simpson Hurricane Wind Scale. Hurricane categories are based only on winds and do not account for storm surge. Any wind category can all cause life-threatening storm surge.
4. Many Gulf Coast areas are vulnerable to storm surge including areas many miles inland from the coastline depending on elevation of the coastal plain. Find out today if you live in a storm surge zone (see pages 5-7 in this guide).
5. Storm surge can occur before, during and after the center of the storm passes through an area, and can sometimes cutoff evacuation routes. The water can also rise well in advance of the coming storm, in some cases 36 hours or greater. When an evacuation is ordered, do not wait until the last minute to leave.
6. During the peak of a storm surge event, it is unlikely that emergency responders will be able to reach you if you are in danger.

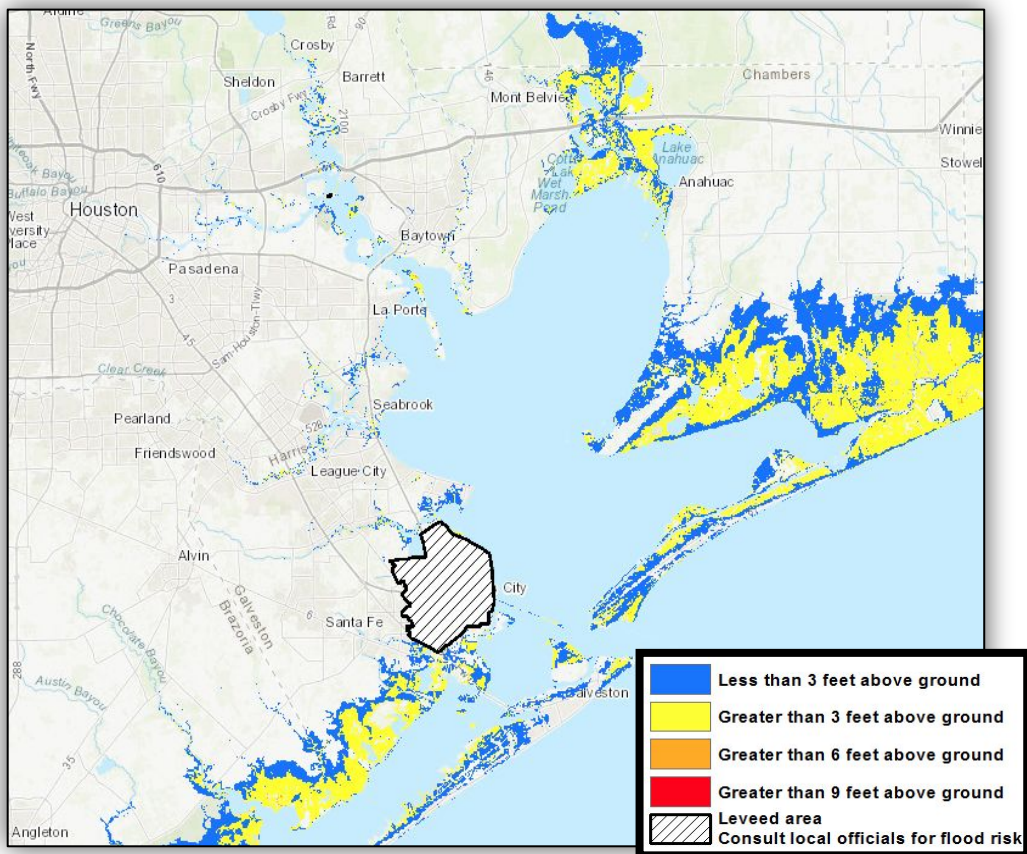
**For more information about storm surge,  
please see this NHC Storm Surge Video:  
<https://www.youtube.com/watch?v=bBa9bVYKLP0>**



# Storm Surge

## Galveston Bay Potential Storm Surge Flooding Map

### Category One Storm\*



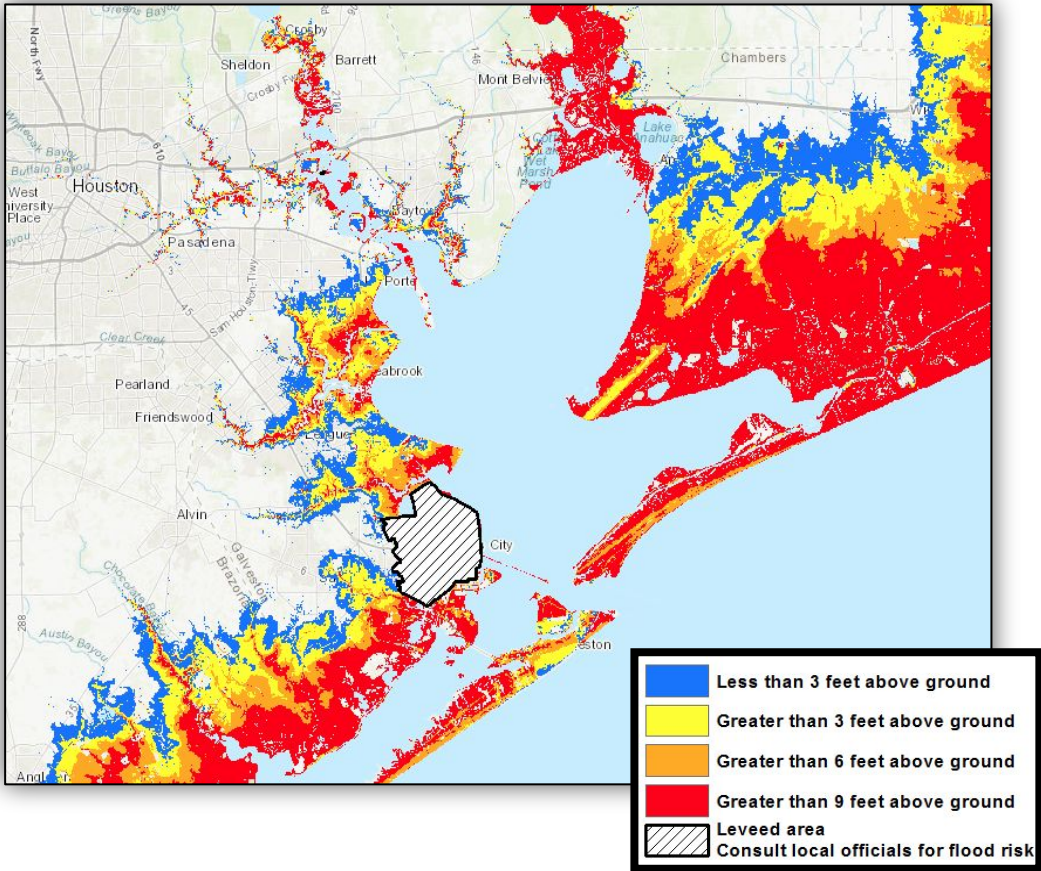
***\*This map shows the height above ground the water could reach and depicts the worst-case scenario from storm surge flooding. Remember storm surge is only loosely related to the category.***

***<https://www.nhc.noaa.gov/nationalsurge/>***

# Storm Surge

## Galveston Bay Potential Storm Surge Flooding Map

### Category Three Storm\*



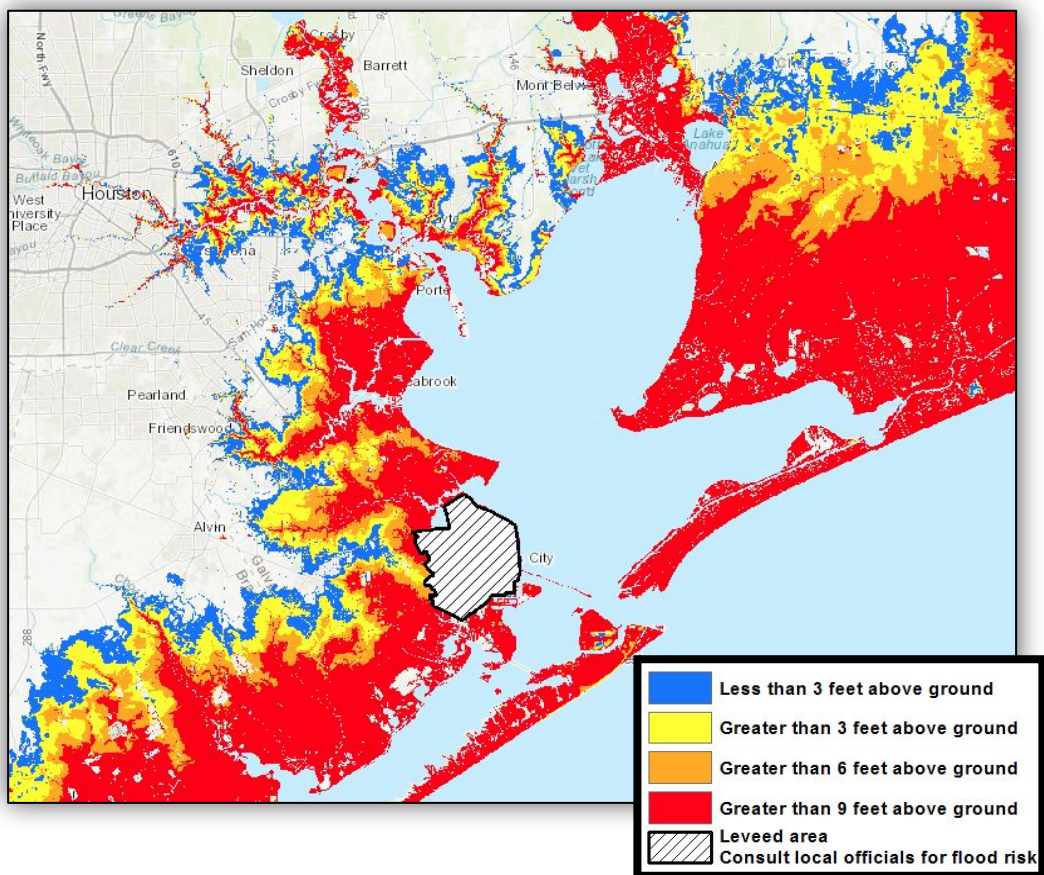
***This map shows the height above ground the water could reach and depicts the worst-case scenario from storm surge flooding. Remember storm surge is only loosely related to the category.***

<https://www.nhc.noaa.gov/nationalsurge/>

# Storm Surge

## Galveston Bay Potential Storm Surge Flooding Map

### Category Five Storm\*



*This map shows the height above ground the water could reach and depicts the worst-case scenario from storm surge flooding. Remember storm surge is only loosely related to the category.*

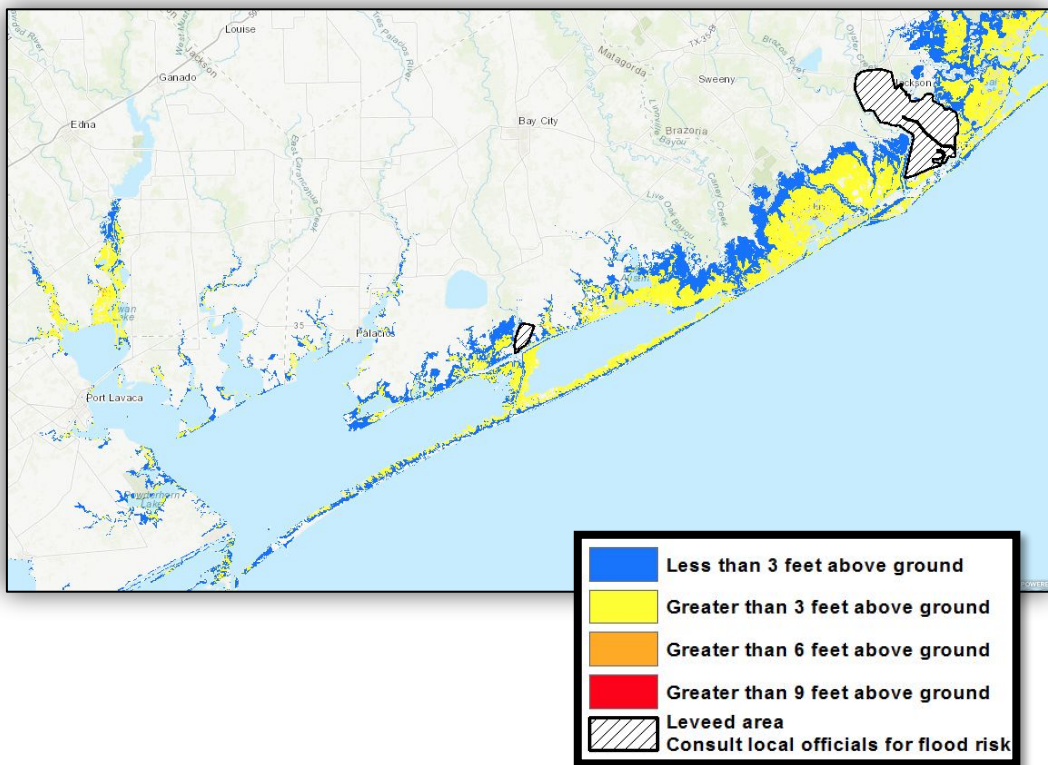
<https://www.nhc.noaa.gov/nationalsurge/>



# Storm Surge

## Matagorda Bay and Brazoria Coastline Potential Storm Surge Flooding Map

### Category One Storm\*



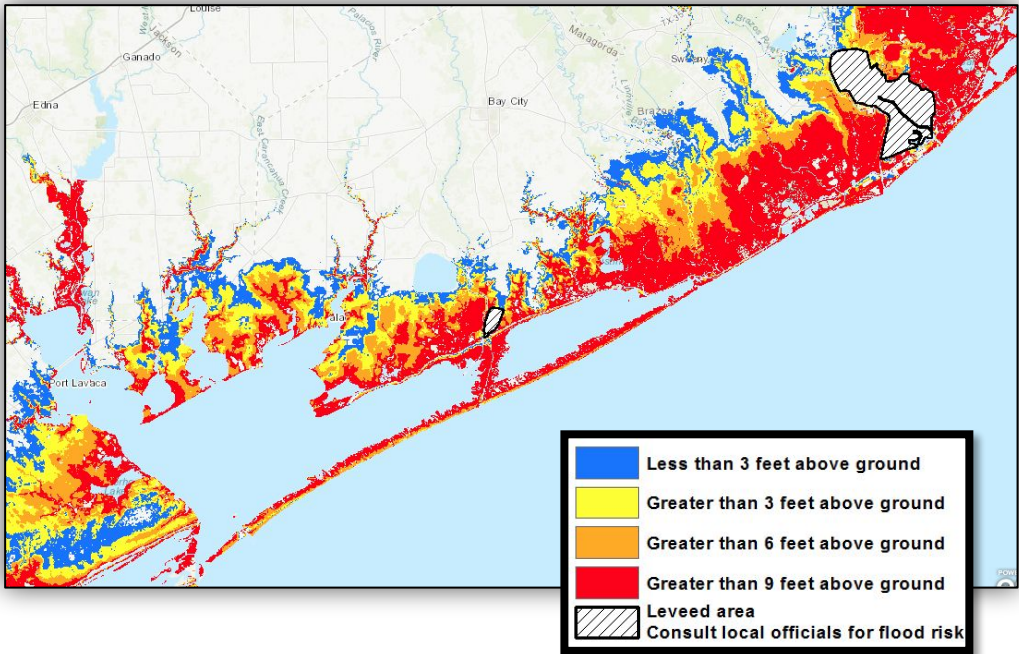
***This map shows the height above ground the water could reach and depicts the worst-case scenario from storm surge flooding. Remember storm surge is only loosely related to the category.***

<https://www.nhc.noaa.gov/nationalsurge/>

# Storm Surge

## Matagorda Bay and Brazoria Coastline Potential Storm Surge Flooding Map

### Category Three Storm\*



***This map shows the height above ground the water could reach and depicts the worst-case scenario from storm surge flooding. Remember storm surge is only loosely related to the category.***

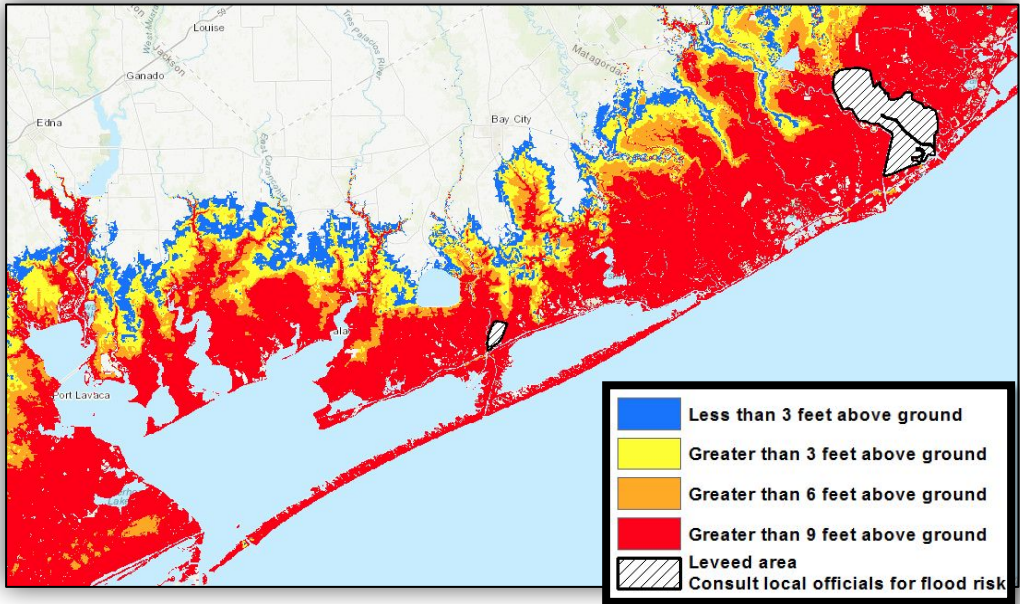
<https://www.nhc.noaa.gov/nationalsurge/>



# Storm Surge

## Matagorda Bay and Brazoria Coastline Potential Storm Surge Flooding Map

### Category Five Storm\*



*This map shows the height above ground the water could reach and depicts the worst-case scenario from storm surge flooding. Remember storm surge is only loosely related to the category.*

<https://www.nhc.noaa.gov/nationalsurge/>

**"The greatest potential for loss of life related to a hurricane is from the storm surge."**

**-National Hurricane Center**

# Inland Flooding

There are numerous examples of significant flooding caused by landfalling tropical cyclones in Texas. Storms with a slow forward motion are the most dangerous as heavy rains persist for a longer period of time.

## Five Practical Ways to Protect Yourself and Others From the Dangers of Inland Flooding

### Protect Your Personal Documents and Special Items

- Store valuables in plastic tubs with locking tops
- In case of an evacuation, you should be able to secure and move all your valuables within 15 minutes

### Buy Flood Insurance – A Plan for Replaceable Items

- The National Flood Insurance Program (NFIP) is available from an insurance agent or the NFIP
- For more information see [www.floodsmart.gov](http://www.floodsmart.gov)

### Flood Proof Your Home – Take Steps to Minimize Flood Damage

- Shut off the main circuit breaker to prevent appliances from short circuiting and eliminate the threat of electrocution
- Raise outside air conditioning units onto platforms above ground level
- Store rarely used or expensive items in the attic or on high shelves

### Develop a Family Flood Plan

- Develop a plan of action to keep from panicking or withdrawing during an emergency
- Have an evacuation route and alternatives planned in the event you are asked to evacuate
- Communicate your plans with friends or family outside of your home area
- Battery powered radios or televisions can be used in the event of a power outage

### Never Drive on Flooded Roads

- Driving into flooded roadways puts your life and the lives of others at risk
- Unless told to evacuate, you are probably safest staying at your current location
- If you encounter flood waters when driving, Turn Around, Don't Drown!



# Tornadoes and Destructive Winds

Tropical cyclones also produce tornadoes. These tornadoes most often occur in thunderstorms embedded in rain bands well away from the center of the hurricane; however, they can also occur near the eyewall. Tornadoes produced by tropical cyclones are relatively weak and short-lived, but still pose a threat.

Hurricane force winds of 74 mph or more can destroy buildings, mobile homes, trees and power poles. Debris such as signs, roofing material, siding, and small items left outside become flying missiles in a hurricane. The strongest winds occur in a region of the hurricane called the eyewall. Wind gusts in the right side of the eyewall are the most destructive. Hurricane force winds can be felt as far as 150 miles from the coast



*Above: Damage to the community of Copano Village in Aransas County, TX in the wake of Hurricane Harvey in 2017.*



*Above: Destroyed mobile home in Refugio County, TX during Hurricane Harvey in 2017.*

## MOBILE HOME RESIDENTS MUST EVACUATE!

- No mobile home or manufactured home - no matter how new it is - can provide safe shelter from hurricane force winds.
- Straps or other tie-downs will not protect a mobile home from the high winds associated with a hurricane.
- Mobile home residents must evacuate when told to do so by local authorities.

## Saffir Simpson Hurricane Wind Scale

- Category 1 - Winds 74 to 95 mph
- Category 2 - Winds 96 to 110 mph
- Category 3 - Winds 111 to 129 mph
- Category 4 - Winds 130 to 156 mph
- Category 5 - Winds 157 mph or higher

# Hurricane Preparation

## Home Preparation

### Elevation Matters

- Know the elevation of your home! Are you in a flood and/or evacuation zone?

### Mobile Homes

- Check tie-downs for rust or breakage.
- Residents of mobile homes must evacuate when told to do so!!

### Landscaping

- Trim trees, shrubbery and dead limbs, especially ones close to your home.
- Repair or replace broken or damaged fences.

### Roofing

- Inspect the roof for loose tiles, shingles or debris. Consider replacing old or damaged shingles with new ones rated for hurricane force winds.
- Clear loose and clogged rain gutters and downspouts.

### Doors

- Reinforce garage doors and tracks or replace with a hurricane tested door.
- Reinforce double entry doors with heavy duty foot and head bolts.
- Use a security deadbolt with a one inch minimum bolt length.

### Windows

- If possible, install tested/manufactured hurricane shutters.
- Inspect existing shutters to ensure they are in good working order.
- Alternative: Use 5/8" or greater exterior grade plywood secured by 2 1/2" screws and/ or special clips. Obtain wood and fasteners, cut wood to size, pre-drill holes and place anchors on homes.



*Above: This well built home in the community of Copano Village in Aransas County, TX survived Hurricane Harvey in 2017.*

**For more information on home preparedness, please visit the Federal Alliance for Safe Homes (FLASH) and/or the FORTIFIED Home program recognized by the Small Business Administration at:**  
**<http://www.flash.org/> | <https://fortifiedhome.org/>**

# Additional Preparation

## Business and Employee Preparation

- Identify and protect vital records. Backup and store key files off site.
  - Protect electronic equipment from possible water damage.
  - Have extra cash and blank checks in case extra money is needed after the storm.
  - Develop a 24-hour emergency contact with phone numbers of key employees.
  - Set up telephone numbers for employees to check in and receive company information.
  - Establish a temporary location for business operations in case your facility is damaged.
  - Give employees enough time to secure their homes and families.
  - Consider paying employees before they leave to prepare their homes.
- 

## Marine Preparations

- Check with the manufacturer for proper ways to secure your boat during a storm.
  - Purchase necessary hurricane materials such as additional mooring lines, crew anchors, fenders, fender boards, chafing gear, and anchors.
  - Safe storm moorings should consist of good condition ropes of sufficient diameter and length, with at least three or four substantial anchor points.
  - Do not moor parallel to bank. Receding tides often capsize boats in this type of anchorage.
- 

## Preparing for Your Pet's Safety

- Your pet should be part of your overall hurricane preparation plans. Below are a few important things to help you prepare:
- Make sure your pet's vaccinations are current and have proof they are current. DO NOT assume that a public shelter or hotel will accept your pet.
- Be sure to have a current photo of your pet.
- Each animal should have a properly sized pet carrier. The carrier should be large enough for the animal to stand up and turn around.
- Pack enough food and bottled water for the duration of your evacuation. DO NOT let your pet eat food or drink water from outside that may have become contaminated.
- Be sure to pack all medications your pet may need along with a muzzle, collar, leash, paper towels, and trash bags.
- Make sure your pet has a proper ID collar.



## Before the Storm

- New and existing policies will not be written or modified when a storm nears the Gulf of America.
  - Make sure you fully understand what perils are covered and excluded in your policy.
  - Make sure your coverage is adequate to replace your home and contents in today's dollar.
  - Determine whether your policy covers additional living expenses for a temporary residence if you are unable to live in your home because of damage from a disaster.
  - Before hurricane season, prepare detailed written and/or photographic inventory of your home's contents and store it in a safe place with your policy.
  - If your insurance company does not cover flood or windstorm perils, ask about coverage through the Texas Windstorm Insurance Association or the National Flood Insurance Program.
- 

## After the Storm

- Give prompt written notice to your insurance company.
- Photograph or videotape damaged structures and all damaged property. Make a list of damaged or lost items.
- DO NOT throw out damaged property before your adjuster has inspected the debris unless it is a health hazard or impedes local cleanup.
- Protect your property from further damage.
- Keep an accurate record of temporary repair and living expenses if a loss of use is suffered.

## Important Online Insurance Information

- National Flood Insurance Program [www.floodsmart.gov](http://www.floodsmart.gov)
- Texas Windstorm Insurance Association [www.twia.org](http://www.twia.org)  
Consumer help line 800-788-8247
- Texas Department of Insurance [www.tdi.texas.gov](http://www.tdi.texas.gov)  
Consumer Help Line 800-252-3439

# Contact Info and Supplies



**American  
Red Cross**

## Emergency Contact Information

Out of Town Contact Address: \_\_\_\_\_

Out of Town Contact Phone Number: \_\_\_\_\_

Work Telephone Number: \_\_\_\_\_

Cell Number/Spouse Cell Number: \_\_\_\_\_

Children Cell Number: \_\_\_\_\_

School Telephone Number: \_\_\_\_\_

Doctor Telephone Number: \_\_\_\_\_

Bank/Credit Card Telephone Number: \_\_\_\_\_

Insurance Company Information: \_\_\_\_\_

Whatever comes your way,  
you'll know what to do.

**Red Cross mobile apps  
put help in your hand.**



First Aid  
App



Hurricane  
App



Earthquake  
App



Wildfire  
App



Tornado  
App



Red First Aid  
App



**24 hour number to  
call for assistance  
1-800-RED CROSS  
(1-800-733-2767)**

Download our preparedness apps today. Call \*\*REDCROSS from your mobile phone and we'll send you a link to download the apps, or search the iTunes app store or Google Play for American Red Cross.

# Hurricane Supply Kit

Your chapter of the American Red Cross recommends that you have the following items in your Hurricane Supply Kit.

- |  |
|--|
| <input type="checkbox"/> At least a 7-day supply of non-perishable food and water. One gallon of water per person per day is recommended                 |
| <input type="checkbox"/> Battery powered portable television or radio with extra batteries   |
| <input type="checkbox"/> Flashlight with extra batteries   |
| <input type="checkbox"/> First Aid kit and manual  |
| <input type="checkbox"/> Sanitation and hygiene items such as instant hand sanitizing gel, moist towelettes, toilet paper, and feminine hygiene products |
| <input type="checkbox"/> Whistle   |
| <input type="checkbox"/> Kitchen accessories, cooking utensils, and manual can opener  |
| <input type="checkbox"/> Cash  |
| <input type="checkbox"/> Extra clothing, blankets, and sleeping bags   |
| <input type="checkbox"/> Matches in a waterproof container   |
| <input type="checkbox"/> Photocopies of identification, insurance, prescriptions, household inventory, credit cards, and your latest utility bill        |
| <input type="checkbox"/> CD or photocopies of important documents such as birth/marriage certificates and titles   |
| <input type="checkbox"/> Prescription medications, eyeglasses, contact lens solution, and hearing aid batteries  |
| <input type="checkbox"/> Formula, baby food, diapers, and pacifiers  |
| <input type="checkbox"/> Pet carriers, leashes, shot records, and food for each animal evacuating with you   |
| <input type="checkbox"/> A good map showing county roads and highways  |
| <input type="checkbox"/> Tire repair kit, booster cables, pump, and flares   |
| <input type="checkbox"/> White distress flag   |
| <input type="checkbox"/> Toys and games for children   |
| <input type="checkbox"/> List of family phone numbers and addresses outside the area   |

# Final Checklists

## Actions to Take When a Storm is in the Gulf

- ☐ Listen frequently to radio, TV, or NOAA weather radio for bulletins and forecasts of the storm's progress.
- ☐ Double check items in your emergency supply kit.
- ☐ Fuel and service your vehicles.
- ☐ Inspect and secure mobile home tie-downs.
- ☐ Board up windows (if shutters do not exist) in case storm moves quickly and you have to leave! **TAPE PROVIDES NO PROTECTION!**
- ☐ Store lawn furniture and other loose, lightweight objects, such as garbage cans and garden tools.
- ☐ Garage or store vehicles that are not being used.
- ☐ Follow instructions issued by local officials.

**EVACUATE IMMEDIATELY IF ORDERED TO DO SO!**

## Final Actions to Take if Leaving

- ☐ Turn off propane tanks.
- ☐ Unplug small appliances.
- ☐ Empty refrigerator and freezer.
- ☐ Turn off utilities if ordered to do so.
- ☐ Lock home securely.
- ☐ Take pets with you.



## Final Actions to Take if Staying

- ☐ Close storm shutters.
- ☐ Notify family members of your evacuation plans.
- ☐ Lower water level in swimming pool by one foot.
- ☐ Turn refrigerator or freezer to coldest setting and open only if necessary (25 pounds of dry ice will keep a 10-cubic foot freezer below freezing for 3-4 days.)
- ☐ Follow instructions from emergency managers and be prepared to turn off utilities if ordered to do so.
- ☐ Board up remaining doors, brace garage door, and remain inside. Stay away from boarded up windows.
- ☐ Take refuge in a predetermined safe room, such as an interior closet, bathroom, or hallway.

**DO NOT EXPECT EMERGENCY RESPONDERS TO BE OF ANY ASSISTANCE DURING A LANDFALLING HURRICANE!**

# Forecast Information



## Latest Weather Information

### National Weather Service

[www.weather.gov/houston](http://www.weather.gov/houston)

24 Hour Phone Recording:

281-337-5074



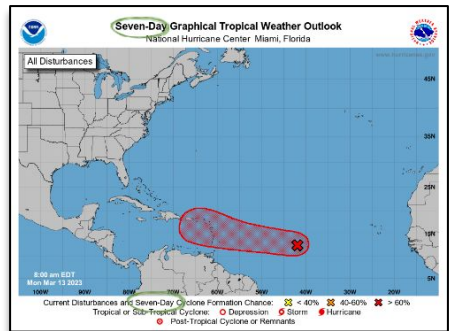
### National Hurricane Center

[www.hurricanes.gov](http://www.hurricanes.gov)



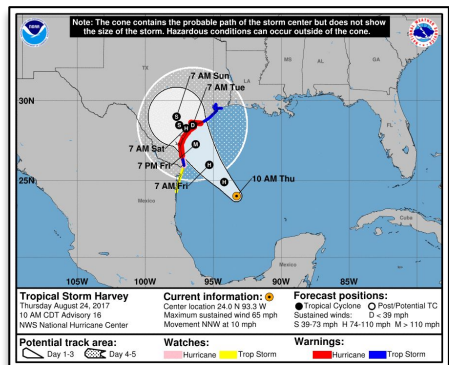
## Graphical Tropical Weather Outlook (May 15 - Nov 30)

- This NHC product provides an overview of all tropical cyclone activity and indicates areas of interest that have potential for tropical cyclone development.



## NHC Forecast Advisory

- Most recent position for a storm along with all coastline watches and warnings. Includes a 3 or 5 day track with error cone.
- Error cone represents a 5 year average error. The center of the storm only stays within the error cone 67% of the time.
- DO NOT focus too closely on the exact track forecast – the little back line.
- Impacts may occur well outside the cone.

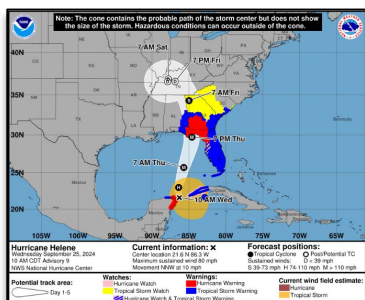




# Forecast Information

## Hurricane Watch/Warning Tropical Storm Watch/Warning

- A Hurricane Watch means hurricane conditions are possible in your area within 48 hours.
- A Hurricane Warning means hurricane conditions are likely within your area within 36 hours.
- A Tropical Storm Watch means tropical storm conditions are possible in your area within 48 hours.
- A Tropical Storm Warning means tropical storm conditions are likely within your area within 36 hours.
- If you are under a hurricane watch or warning, prepare for possible evacuations and evacuate if instructed to do so.



## Do you have Wireless Emergency Alerts (WEA) turned on for your phone?

WEAs are sent by authorized government agencies through your wireless provider and alert to extreme weather.

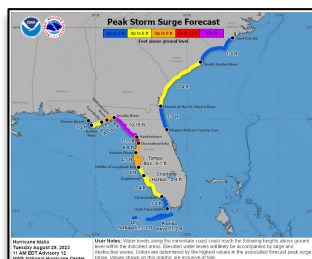
WEAs include a special tone and vibration, both repeated twice. Check your wireless phone's menu settings to ensure WEAs are enabled:

- Android: Settings > Connections > More Connection Settings > Wireless Emergency Alerts
- Apple: Settings > Notifications > Government Alerts



## Graphical depiction of peak storm surge inundation values along the U.S. Gulf & Atlantic coasts, Puerto Rico, and the U.S. Virgin Islands

- Values represent the peak height water could reach above normally dry ground somewhere in the specified area



## Hurricane Watch vs. Warning Know the Difference

### HURRICANE WATCH

A Hurricane Watch is issued when hurricane force winds are possible.

Prepare your home by boarding up windows and moving loose items indoors. Have an emergency supply kit ready.

**Hurricane Possible.**

### HURRICANE WARNING

A Hurricane Warning is issued when hurricane force winds are expected.

Seek shelter in a sturdy structure or evacuate if ordered.

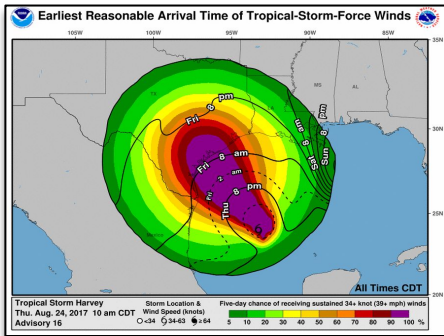
**Hurricane Expected!**

weather.gov

# Forecast Information

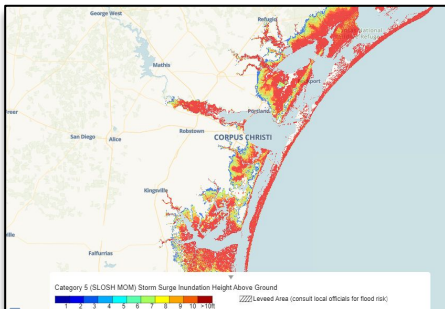
## Time of Arrival Graphics

- These maps are useful planning tools.
- One map shows the earliest reasonable arrival time of tropical storm force winds.
- A secondary map will show the most likely arrival time of tropical storm force winds.



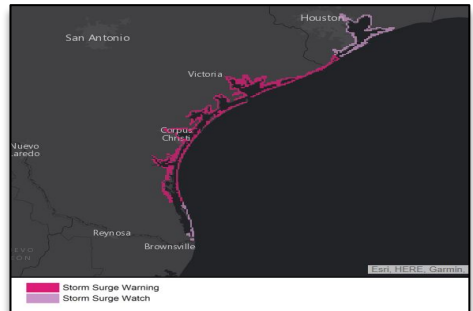
## Potential Storm Surge Flooding Map

- If a hurricane is threatening your community, go to [hurricanes.gov](http://hurricanes.gov) and view the potential storm surge flooding map, which will show the reasonable-worst case scenario from storm surge inundation for your area.



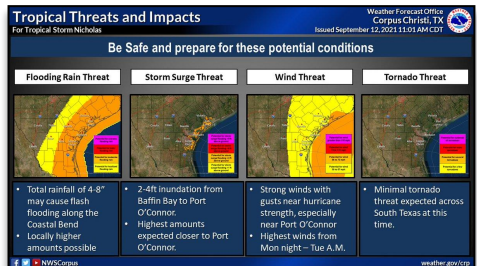
## Storm Surge Watch/Warning

- A storm surge watch is the possibility of life-threatening storm surge within 48 hours.
- A storm surge warning is the danger of life-threatening storm surge within 36 hours.
- If you are located in a storm surge watch or warning, you are not safe. Take action to protect your life. Promptly follow evacuation and other instructions from emergency management officials.



## Hurricane Threats and Impacts

- This product issued by local NWS offices will summarize potential impacts expected from a tropical cyclone.
- Click on the colored area and text that describes potential impacts will display.
- [www.weather.gov/srh/tropical?office=hgx](http://www.weather.gov/srh/tropical?office=hgx)



# Local Tropical Webpage

## NWS Houston/Galveston Tropical Webpage

NWS Houston/Galveston homepage [Provide Feedback on this Webpage](#)

**Outlook** Threats and Impacts Satellite Radar Social Media Preparedness Links

There are currently no active storms in the North Atlantic, Caribbean Sea, or Gulf of Mexico.

**Two-Day Graphical Tropical Weather Outlook**  
National Hurricane Center Miami, Florida

No Disturbances  
No tropical cyclone activity is expected during the next 48 hours.

Current Disturbances and Two-Day Cyclone Formation Chance: < 40% 40-60% > 60%  
Tropical or Sub-Tropical Cyclone: ○ Depression ● Storm ● Hurricane  
● Post-Tropical Cyclone or Remnants

[Product Description](#)

**Seven-Day Graphical Tropical Weather Outlook**  
National Hurricane Center Miami, Florida

No Disturbances  
No new tropical cyclones are expected during the next seven days.

4-10 pm EDT  
Wed Apr 24 2024

Current Disturbances and Seven-Day Cyclone Formation Chance: < 40% 40-60% > 60%  
Tropical or Sub-Tropical Cyclone: ○ Depression ● Storm ● Hurricane  
● Post-Tropical Cyclone or Remnants

[Product Description](#)

Click each image above to view the full-size image.

Special Tropical Weather Outlook  
NWS National Hurricane Center Miami FL  
410 PM EDT Wed Apr 24 2024

For the North Atlantic...Caribbean Sea and the Gulf of Mexico:

East-Central Subtropical Atlantic:  
An area of low pressure located about 900 miles northwest of the Cabo Verde Islands has been producing a small but persistent area of showers and thunderstorms to the east of its center since this morning. However, the low is forecast to move southwestward at 10 to 15 mph into an area of stronger upper-level winds tonight and tomorrow, and additional development is not expected.

No additional Special Tropical Weather Outlooks are scheduled for this system unless conditions warrant. Regularly scheduled Tropical Weather Outlooks will resume on May 15, 2024, and Special

- **One-Stop Shop** for all tropical related forecast information, tailored to each forecast area along U.S. coastline.
- **Active Storms** tab appears when NHC initiates Tropical Cyclone advisories.
- **Local Products** tab also becomes active when WFO Issues Watches/Warnings for local area.
- **Satellite and Radar** data is always available.
- **Preparedness** tab is always available and provides quick access to local evacuation maps, preparedness guides, and videos.
- Scrolling down the page provides access to NHC products related to each active storm and WPC rainfall products.

# Tourist Safety Guide

## How to Prepare for Hurricane Season

### Actions To Take When Threatened By A Hurricane:

- Listen frequently to radio, TV, or NOAA Weather Radio
- Fuel your vehicle
- Stock up on batteries, food that will keep, first aid supplies, drinking water, and medications
- Have cash on hand in case power goes out and ATMs don't work
- **Follow instructions from local officials and leave if ordered**

### Terms To Know:

**Tropical Storm/Hurricane Watch: Conditions are possible within 48 hours**

**Tropical Storm/Hurricane Warning: Conditions are expected within 36 hours**

**Continue to check [hurricanes.gov](https://www.weather.gov/houston) for the latest forecast information!**

### How will you get alerts while on vacation?

- Local media (TV, radio, newspaper, etc)
- Our website [weather.gov/houston](https://www.weather.gov/houston)
- Wireless Emergency Alerts or WEA
  - WEAs are free notifications on your smartphone that can indicate hazardous weather.
  - WEA alerts include: Tornadoes, Severe Thunderstorms, Flash Floods, **Extreme Winds, Hurricanes**, Tsunamis, **Storm Surge** and Winter Weather

### What should you do if you receive a WEA?

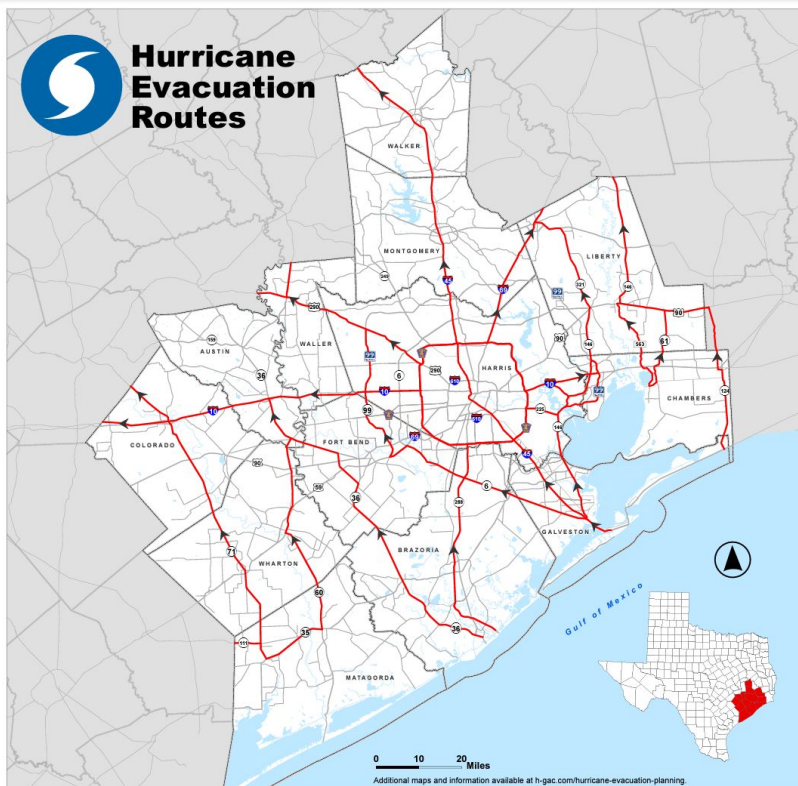
- Follow any action advised by the emergency message. Seek more details from your favorite TV or radio station, NOAA Weather Radio, news website, desktop application, mobile application, or other trusted source of information.

For more information about Wireless Emergency Alerts, visit: [weather.gov/wrn/wea](https://www.weather.gov/wrn/wea)

# Evacuation Routes



## Hurricane Evacuation Routes



### H-GAC Region

Austin, Brazoria,  
Chambers, Colorado,  
Fort Bend, Galveston,  
Harris, Liberty,  
Matagorda,  
Montgomery,  
Walker, Waller,  
Wharton



### Route Designation

- Evacuation Corridors
- Other Roads
- County Boundary



Revision Date: May 1, 2024  
Expiration Date: December 31, 2024  
Map Created by:  
Houston-Galveston Area Council

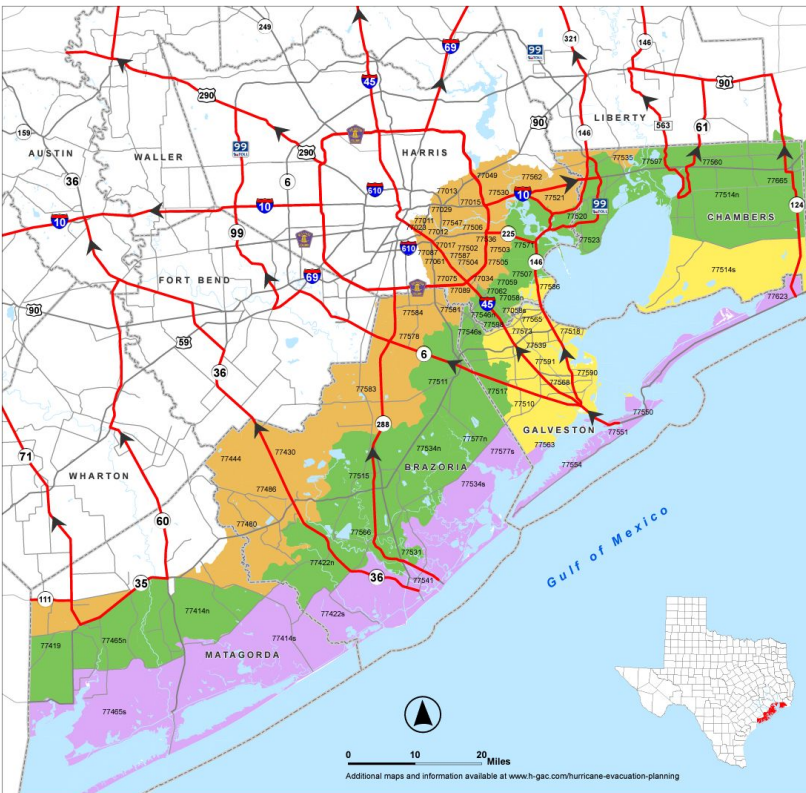
[Click Here for a Complete Hurricane Evacuation Maps](#)

### Actions Before Evacuating:

- State of Texas will supply fuel and other resources along designated evacuation routes. However you will be allowed to take other roads if preferred.
- Follow orders from local officials
- Once the evacuation order is given, LEAVE IMMEDIATELY
- Take your Hurricane Supply Kit with you
- Leave as early as possible to avoid heavy traffic and hazardous weather
- Do NOT stay in a mobile home near the coast
- Remember that large boats and travel trailers may not be allowed to cross local bridges and causeways once high winds commence
- Prepare to stay at your destination for a week or more as re-entry may be restricted; check with jurisdiction before returning to make sure it is safe to do so.



# Evacuation Zip Zones



## Brazoria, Chambers, Galveston, Harris and Matagorda Hurricane Evacuation Zip-Zones Coastal, A, B, C

ZIP ZONE COASTAL					
77414s	77422s	77455s	77534s	77541	
77550	77551	77554	77563	77577s	
77623					
ZIP ZONE A					
77056s	77510	77514s	77518	77539	
77563	77565	77568	77573	77586	
77590	77591				
ZIP ZONE B					
77056s	77510	77514s	77518	77539	
77422n	77465n	77507	77511	77514n	
77515	77517	77520	77523	77531	
77534n	77540n	77545n	77580	77586	
77571	77577n	77587	77598	77665	
ZIP ZONE C					
77011	77012	77013	77015	77017	
77023	77029	77034	77049	77061	
77075	77087	77089	77430	77444	
77480	77486	77502	77503	77504	
77505	77506	77521	77530	77535	
77536	77547	77562	77578	77581	
77583	77584	77587			

Same zip codes are split into north (n) and south (s) for evacuation purposes.

### Route Designation

- Evacuation Corridors
- Other Roads
- County Boundary



Revision Date: May 1, 2024  
Expiration Date: December 31, 2024  
Map Created by:  
Houston-Galveston Area Council

Evacuation zones loosely correspond to the following hurricane categories. However, surge depends on other factors like storm size and speed. Its best to heed recommendations and any evacuation orders made by local officials. What zone are you in? If you area is NOT shaded in on the map, most of the time an evacuation would not be ordered. Zones are closely related to storm surge flooding risk.

**Purple - Cat 1; Yellow - Cat 1 or 2;**  
**Green - Cat 3; Orange - Cat 4,5.**

[Click Here for an Evacuation Map by Zip-Zones](https://www.h-gac.com/hurricane-evacuation-planning)

<https://www.h-gac.com/hurricane-evacuation-planning>

**Evacuees NEED to consider the projected path of the hurricane when choosing an evacuation route and destination. When local authorities order an evacuation, leave immediately!**



## State of Texas Emergency Assistance Registry (STEAR)

**The State of Texas offers the option to register with the STEAR program, a free registry that provides local emergency management planners and responders with information related to your needs during an emergency.**

### Who Should Register?

- People with disabilities
- People who are medically fragile
- People with functional needs such as:
  - Limited mobility
  - Communication barriers
  - Require additional medical assistance during an emergency event
  - Require personal care assistance
- People who require transportation assistance



Scan to Register



Register online at  
[Stear.tdem.texas.gov](http://Stear.tdem.texas.gov)



Call 2-1-1 or use your video  
phone relay option of choice

Registering in STEAR **DOES NOT** guarantee you will receive a specific service during emergencies.

# Returning Home

**IF YOU EVACUATED THE AREA, WAIT FOR AN ALL CLEAR FROM THE CITY OR COUNTY BEFORE ATTEMPTING TO RETURN TO YOUR HOME. BE PREPARED TO SHOW PROOF OF RESIDENCE BY HAVING A COPY OF YOUR LATEST UTILITY BILL.**

## Debris Cleanup

- Cities and counties will publish a schedule for debris pick-up and removal. Debris cannot be removed from private property.
- Construction materials, vegetative debris, household hazardous waste and household appliances will need to be placed into separate piles and moved to the curbside for pick-up.



## General Cleanup

- Be cautious of structural damage and downed power lines.
- DO NOT attempt to move structural supports or large pieces of debris.
- DO NOT run power generators indoors. Inhalation of carbon monoxide from the exhaust can cause death. Ensure exhaust is well ventilated.
- DO NOT use open flames indoors.
- Restrict your driving to emergency use only. Road conditions may not be safe until road debris is cleared.

## Water

- Listen for instructions regarding public water supply. Use only bottled, boiled or treated water until you know that your water supply is safe.
- You can use household chlorine bleach to treat water for drinking or cleaning. Add 1/8 teaspoon of bleach per gallon of clear water or 1/4 teaspoon of bleach per gallon if water is cloudy. Allow water to stand for 30 minutes before using.

## Interior Cleanup

- Disinfect and dry interior buildings and items inside. This will prevent growth of some bacteria, viruses, mold, and mildew that can cause illness.
- Clean walls, floors, and countertops with soap and water. Disinfect them with a solution of 1 cup of bleach to 5 gallons of water.
- Wash all clothes and linens in hot water. Air dry and spray all unwashable items with disinfectant. Steam clean carpets. Throw away all items touched by water that cannot be disinfected.

# Returning Home

## Utility Cleanup

- Check for gas leaks. If you smell or hear gas leaking, leave immediately. DO NOT use the phone or turn on lights in your home. Call the gas company from a neighbor's phone.
- Report any visible damage of power lines to the electric company. Turn off power at main breaker if any electrical equipment or circuits have been exposed to water.
- DO NOT connect generators to your home's electrical circuits. If a generator is on line when electrical service is restored, it can become a major fire hazard. Also, line workers working to restore power will be endangered if a generator is hooked up to the home's circuits.



- It is likely that an electric company other than your own will reconnect the lines to your home; however, they cannot turn the service back on. Only your electric company can actually turn the power back on to your house.

---

## Sewage Cleanup

- If you suspect water or sewage lines are damaged, do not use your plumbing (toilets, sinks, etc.). Contact the water company or a plumber for repairs.
- A chemical portable commode can be created by the following:
  - Use 5 gallon buckets with tight lids, lined with heavy duty plastic garbage bags.
  - Add kitty litter to the bucket as a disinfectant and deodorizer. Keep lids on firmly.
  - Keep buckets in a cool, dark place. Clean and disinfect buckets immediately.
- Your toilet can also be used by flushing until the bowl has no water. Then, line with heavy duty trash bags and disinfect with chlorine bleach after each use. Remove waste to an outside location.
- If significant sewer outages have occurred, instructions for disposal of human wastes will be announced.
- DO NOT dispose of human waste through your regular trash!

# Emergency Management Contacts

## AUSTIN COUNTY

- **County Emergency Management**  
979-865-6463  
[www.austincounty.com](http://www.austincounty.com)

## BRAZORIA COUNTY

- **County Emergency Management**  
979-864-1201  
[brazoriacountytx.gov/departments/emergency-management/](http://brazoriacountytx.gov/departments/emergency-management/)

- **Alvin**  
281-388-4363  
[www.alvin-tx.gov](http://www.alvin-tx.gov)
- **Angleton**  
979-849-2383
- **Bailey's Prairie**  
979-849-0134
- **Bonney**  
281-595-2269
- **Brazoria**  
979-798-2489
- **Brookside Village**  
281-485-3048
- **Clute**  
979-265-9653
- **Danbury**  
979-583-5733
- **Freeport**  
979-233-2111
- **Hillcrest**  
281-756-0577  
<http://www.hillcrestvillagetx.gov/>
- **Holiday Lakes**  
979-849-1136
- **Iowa Colony**  
281-369-3444  
<http://iowacolonytx.gov/>
- **Jones Creek**  
979-292 -6393

## Lake Jackson

979-415-2500  
[www.lakejackson-tx.gov](http://www.lakejackson-tx.gov)

- **Liverpool**  
281-581-2342
- **Manvel**  
281-489-0630
- **Oyster Creek**  
979-233-8481
- **Pearland**  
281-997-4640  
[pearlandtx.gov/prepare](http://pearlandtx.gov/prepare)
- **Quintana**  
979-233-0848
- **Richwood**  
979-265-2082
- **Surfside**  
979-239-1151
- **Sweeny**  
979-482-4617  
[sweenytx.gov](http://sweenytx.gov)
- **West Columbia**  
979-345-5121

## BRAZOS COUNTY

- **County Emergency Management**  
979-821-1010  
[www.bcdem.org](http://www.bcdem.org)
- **Bryan**  
979-821-1000
- **College Station**  
979-821-1000

## BURLESON COUNTY

- **County Emergency Management**  
979-567-2001  
<http://www.co.burleson.tx.us/>

**Only Call 911 in an Emergency!**



# Emergency Management Contacts

## CHAMBERS COUNTY

- **County Emergency Management**  
409-267-2445  
[www.chamberscountytexas.gov](http://www.chamberscountytexas.gov)
- **Mont Belvieu**  
281-576-2021

## COLORADO COUNTY

- **County Emergency Management**  
979-733-0184  
[www.co.colorado.tx.us/](http://www.co.colorado.tx.us/)

## FORT BEND COUNTY

- **County Emergency Management**  
281-342-6185  
[www.fbcoem.org](http://www.fbcoem.org)
- **Arcola**  
281-431-0606
- **Beasley**  
979-387-2775
- **Fairchilds**  
281-705-1856
- **Fulshear**  
281-346-8822
- **Kendleton**  
979-532-8240
- **Meadows Place**  
281-983-2900
- **Missouri City**  
281-403-4370
- **Needville**  
979-793-4255
- **Orchard**  
979-478-6893
- **Pleak**  
281-239-8504

- **Richmond**  
281-342-0559  
[www.richmondtx.gov](http://www.richmondtx.gov)
- **Rosenberg**  
832-595-3700  
[www.rosenbergtx.gov](http://www.rosenbergtx.gov)
- **Simonton**  
281-533-9809
- **Stafford**  
281-208-6983
- **Sugar Land**  
281-275-2700

[sugarlandtx.gov/105/Emergency-Management](http://sugarlandtx.gov/105/Emergency-Management)

- **Weston Lakes**  
281-533-0907

## GALVESTON COUNTY

- **County Emergency Management**  
281-309-5002  
888-384-2000  
[www.gcoem.org](http://www.gcoem.org)
- **Bayou Vista**  
409-935-0449
- **Clear Lake Shores**  
281-334-2799
- **Dickinson**  
281-337-4599  
[www.dickinsontexas.gov](http://www.dickinsontexas.gov)
- **Friendswood**  
281-996-3300  
[friendswood.com/](http://friendswood.com/)
- **City of Galveston**  
409-765-3702  
[galvestontx.gov](http://galvestontx.gov)

**Only Call 911 in an Emergency!**

# Emergency Management Contacts

## **GALVESTON COUNTY**

- **Hitchcock**  
409-986-5559  
[www.hitchcockpd.com](http://www.hitchcockpd.com)
- **Jamaica Beach**  
920-737-1800  
[www.ci.jamaicabeach.tx.us](http://www.ci.jamaicabeach.tx.us)
- **Kemah**  
281-334-5414
- **La Marque**  
409-938-9269  
[www.cityoflamarque.org](http://www.cityoflamarque.org)
- **League City**  
281-554-1000  
[www.leaguecity.com](http://www.leaguecity.com)
- **Santa Fe**  
409-925-2000
- **Texas City**  
409-643-5720
- **Tiki Island**  
409-935-1427  
[www.villageoftikiisland.gov](http://www.villageoftikiisland.gov)

## **GRIMES COUNTY**

- **County Emergency Management**  
979-204-4592  
[www.grimescountytexas.gov](http://www.grimescountytexas.gov)
- **Navasota**  
936-825-6410  
<http://www.navasotatx.gov/>

## **HARRIS COUNTY**

- **County Emergency Management**  
713-881-3100  
[www.readyharris.org](http://www.readyharris.org)
- **City of Houston**  
713-884-4500  
[www.houstonoem.org](http://www.houstonoem.org)
- **Baytown**  
281-422-2311  
[baytown.org/preparedness](http://baytown.org/preparedness)

- **Bellaire**  
713-662-8202  
[www.bellairetx.gov](http://www.bellairetx.gov)
- **Deer Park**  
281-478-7298  
[www.deerparktx.gov](http://www.deerparktx.gov)
- **El Lago**  
281-326-2658
- **Galena Park**  
713-672-2556
- **Humble**  
281-446-4928  
[www.cityofhumble.com](http://www.cityofhumble.com)
- **Jacinto City**  
713-674-8424
- **Jersey Village**  
713-466-2130
- **Katy**  
281-391-3500  
[www.cityofkaty.com](http://www.cityofkaty.com)
- **La Porte**  
281-470-0010  
[www.lpoem.org](http://www.lpoem.org)
- **Morgans Point**  
281-471-2171
- **Nassau Bay**  
281-333-4211  
[www.nassaubay.com](http://www.nassaubay.com)
- **Pasadena**  
713-475-5588  
[www.pasadenatx.gov](http://www.pasadenatx.gov)
- **Seabrook**  
281-291-5787  
[seabrooktx.gov/](http://seabrooktx.gov/)
- **Shoreacres**  
281-471-2244
- **South Houston**  
713-947-7700

**Only Call 911 in an Emergency!**

# Emergency Management Contacts

## HARRIS COUNTY

- **Taylor Lake Village**  
281-326-2843
- **Tomball**  
281-351-5484
- **Webster**  
281-332-1826  
[www.cityofwebster.com](http://www.cityofwebster.com)
- **West University Place**  
713-662-5835  
<http://www.westutx.gov/>

## HOUSTON COUNTY

- **County Emergency Management**  
936-544-7175  
<http://www.co.houston.tx.us/>

## JACKSON COUNTY

- **County Emergency Management**  
361-782-3398  
[www.co.jackson.tx.us](http://www.co.jackson.tx.us)
- **Edna**  
361-782-3122
- **Ganado**  
361-771-2800

## LIBERTY COUNTY

- **County Emergency Management**  
936-334-3219  
[www.co.liberty.tx.us](http://www.co.liberty.tx.us)
- **City of Liberty**  
936-336-8118
- **City of Cleveland**  
281-592-2667  
[www.clevelandtexas.com](http://www.clevelandtexas.com)

## MADISON COUNTY

- **County Emergency Management**  
936-348-3810  
[www.co.madison.tx.us](http://www.co.madison.tx.us)

## MATAGORDA COUNTY

- **County Emergency Management**  
979-323-0707  
[disaster@co.matagorda.tx.us](mailto:disaster@co.matagorda.tx.us)

## MONTGOMERY COUNTY

- **County Emergency Management**  
936-523-3900  
[www.mctxoem.org](http://www.mctxoem.org)
- **Conroe**  
936-522-3080  
<http://www.cityofconroe.org/>
- **Shenandoah**  
361-771-2800

## POLK COUNTY

- **County Emergency Management**  
936-327-6826  
[www.polkcountyoem.com](http://www.polkcountyoem.com)
- **Alabama-Coushatta**  
936-563-1200

## SAN JACINTO COUNTY

- **County Emergency Management**  
936-653-3395  
<http://www.co.san-jacinto.tx.us/>

## WALKER COUNTY

- **County Emergency Management**  
936-435-8035  
<http://www.co.walker.tx.us/>
- **City of Huntsville**  
936-291-5917

**Only Call 911 in an Emergency!**

# Emergency Management Contacts

## WALLER COUNTY

- **County Emergency Management**  
979-826-8282

## WASHINGTON COUNTY

- **County Emergency Management**  
979-353-7683

<http://www.co.washington.tx.us/>

## WHARTON COUNTY

- **County Emergency Management**  
979-532-4612

<https://www.co.wharton.tx.us/>

- **El Campo**  
979-543-5311
- **Wharton**  
979-532-4811, ext 502

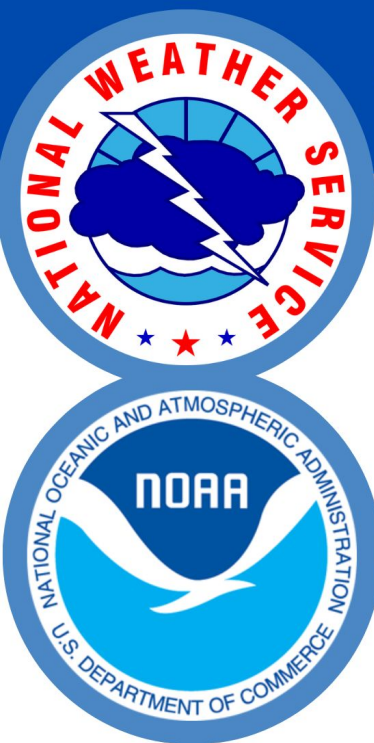
## Additional Information

- **US Department of Homeland Security**  
[www.ready.gov](http://www.ready.gov)
- **American Red Cross**  
[www.redcross.org](http://www.redcross.org)  
*(enter zip code for local office)*  
24 hour number to call for assistance  
1-800-RED CROSS  
(1-800-733-2767)

**Only Call 911 in an Emergency!**



**Become an  
Ambassador  
Today!**



**National Weather Service  
WFO Houston/Galveston, TX**

1353 FM 646 Suite 202  
Dickinson, TX 77539

Phone: 281-337-5074  
[www.weather.gov/houston](http://www.weather.gov/houston)

**@NWSHouston**

