

HIGDON/SHILOH TORNADO

Jackson, DeKalb counties (AL), Dade, Walker counties (GA)

Strength/Wind Speed:

● EF-4/190 mph

Time:

● 4:01 PM- 4:36 PM

Length/Width:

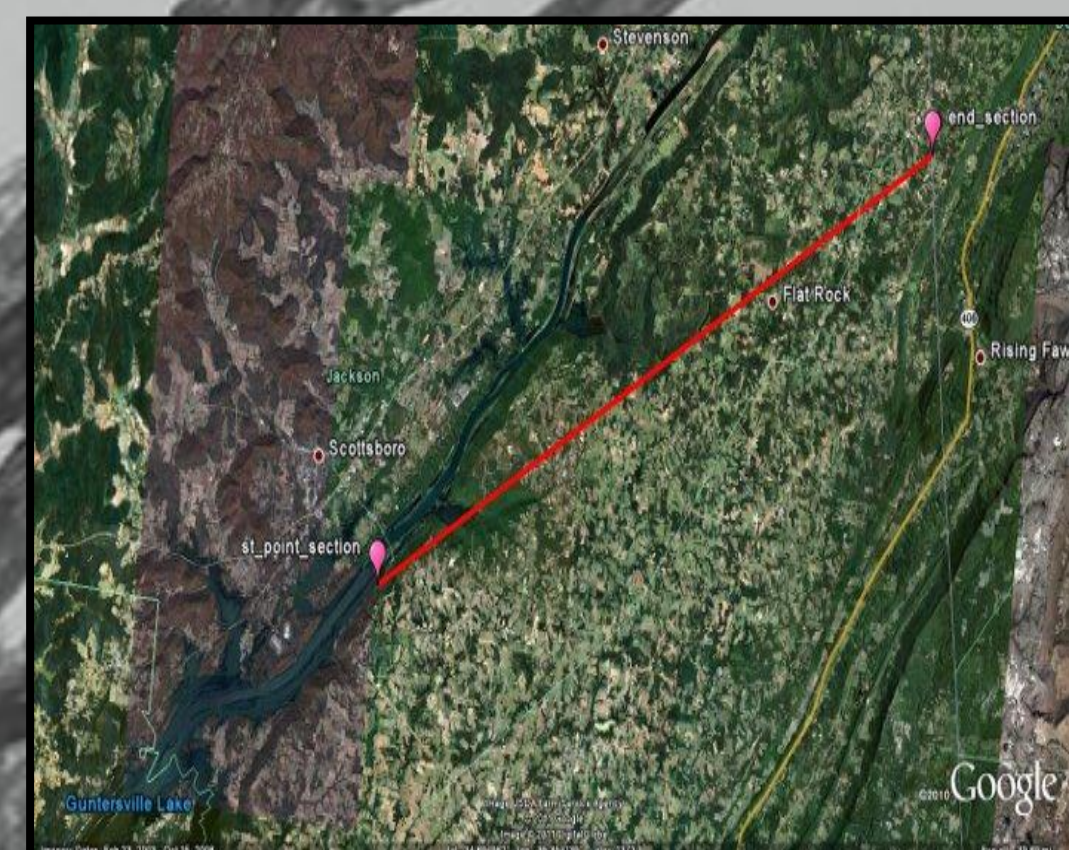
● 27.76 Miles/ 1.0 Mile

Fatalities/Injuries:

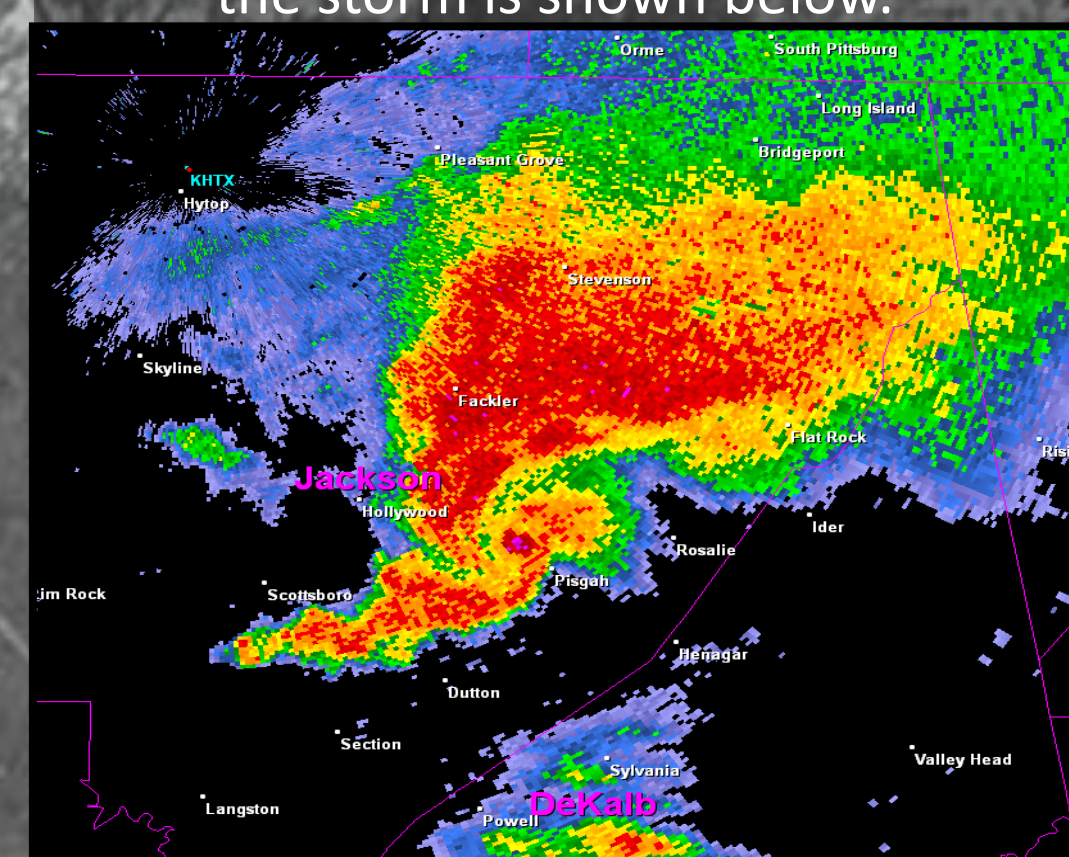
● 14 fatalities/At least 50 injuries



Damage photos shown here display a vehicle that was thrown across a resident's property, as well as another dwelling that was completely destroyed.



The map above displays the track of the Higdon/Shiloh tornado after surveying the damage by ground/aerial surveys, while a radar image of the storm is shown below.



This tornado started about 3 miles northeast of Section, snapping and uprooting many trees as it moved northeast. In a matter of minutes it had doubled its wind speed and grew to be 3/4ths of a mile wide. Some residents claimed that this was a multi-vortex tornado that later merged into one large tornado. It was responsible for uprooting and debarking thousands of trees, destroying several homes and businesses, 14 fatalities, and many injuries. It reached its peak winds of 190 mph as it came into the Flat Rock and Higdon communities. The tornado then tracked through the Shiloh community and into Dade and Walker counties in Georgia, claiming many homes and several chicken barns in the wake of its path.