

NWS Wilmington, Ohio April 2019 Regional Climate Summary

Regional Climate Summary

A cool and dry start to the month quickly transitioned to a warmer pattern. A more active weather pattern developed near the middle of the month with multiple days of severe weather across the region. In fact, several strong storm systems brought heavy rain to the area, including on the 19th into the 20th and again from the 25th into the 26th. Both systems individually produced 1-3" across parts of the area, which produced reports of localized flooding. A mix of below and above normal temperatures finished off the end of the month.

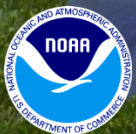
Temperatures

The cool start to the month only lasted a few days and was followed by an extended stretch of above normal temperatures which persisted through the middle of the month.

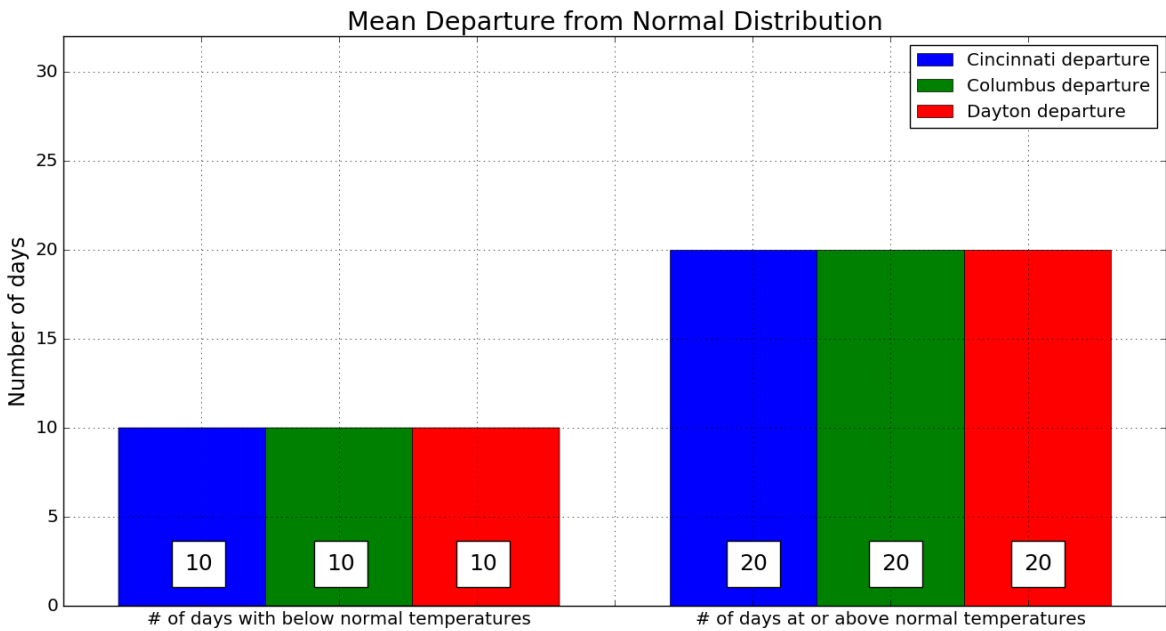
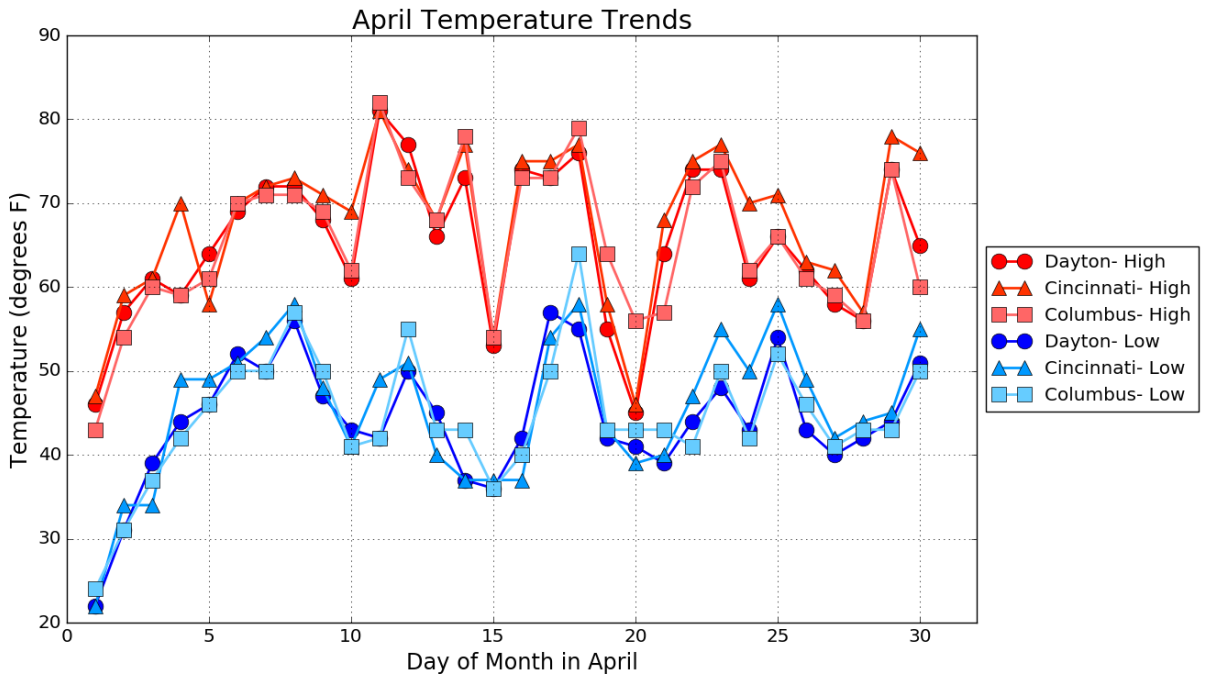
A mix of above normal and below normal temperatures occurred for the second half of the month. Overall temperatures ended up above normal for the month of April. There was a wide range of temperatures throughout the month with lows in the 20s on the 1st and high temperatures in the low 80s on the 11th.

Throughout the month, the weather pattern yielded many overnight lows that were unseasonably warm. In fact, a daily record warm low temperature was set in Columbus on the 18th, when the low only dropped to 64°F. This broke the record high minimum for the date of 63°F set in 1941. In fact, the low temperature only dipped below freezing one or two nights in the entire month (on the 1st and the 2nd). For reference, the temperature fell below freezing 15 times at Dayton in April of 2018.

Site	Avg Temp (°F)	Avg High Temp (°F)	Avg Low Temp (°F)	Departure From Normal (°F)	Maximum Temperature (°F)	Minimum Temperature (°F)
Cincinnati (CVG)	56.7°F	67.7°F	45.7°F	+2.5°F	81°F on 11th	22°F on 1st
Columbus (CMH)	55.0°F	65.4°F	44.6°F	+1.9°F	82°F on 11th	24°F on 1st
Dayton (DAY)	54.7°F	65.2°F	44.2°F	+3.1°F	81°F on 11th	22°F on 1st



Temperatures (Continued)



Precipitation

Despite the very wet months of February and March across the region, the month of April featured a historically-dry start. For example, within the first 10 days of the month combined, only 0.05" of precipitation was measured at Columbus (CMH). This was the 4th driest first ten days of April on record for the site.

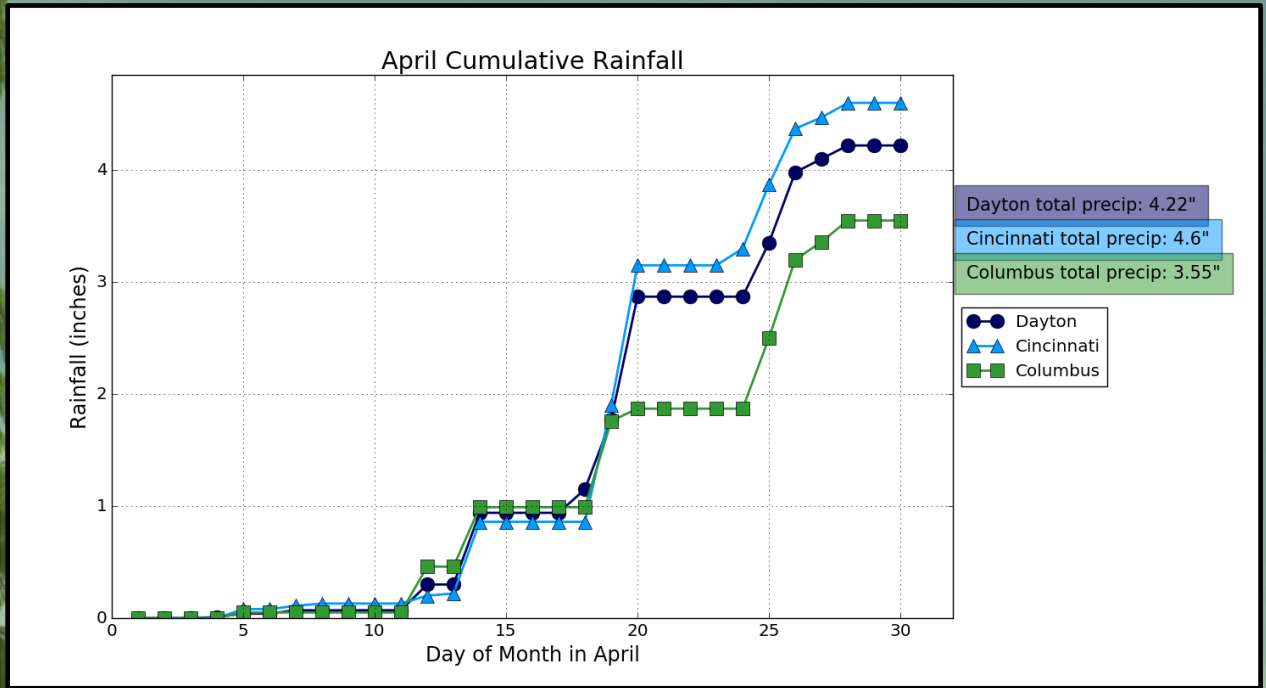
Two strong storm systems moved through on the 12th and 14th bringing with them more widespread precipitation in addition to severe weather. Another potent system brought widespread heavy rain on the 25th into the 26th, with many spots receiving another 1-3" between the two days combined. This resulted in various reports of high water and flooding across much of the region (particularly near and north of the I-71 corridor). Additionally, an EFO tornado was confirmed to have touched down in Darke County late in the evening on the 25th. This occurred coincident with several thunderstorms which exhibited tendencies of rotation as they progressed through the region.

Additional precipitation occurred towards the end of the month allowing for April to finish with above normal precipitation at Cincinnati (CVG), Columbus (CMH), and Dayton (DAY). With above normal temperatures, very little in the way of snowfall occurred during the month of April.

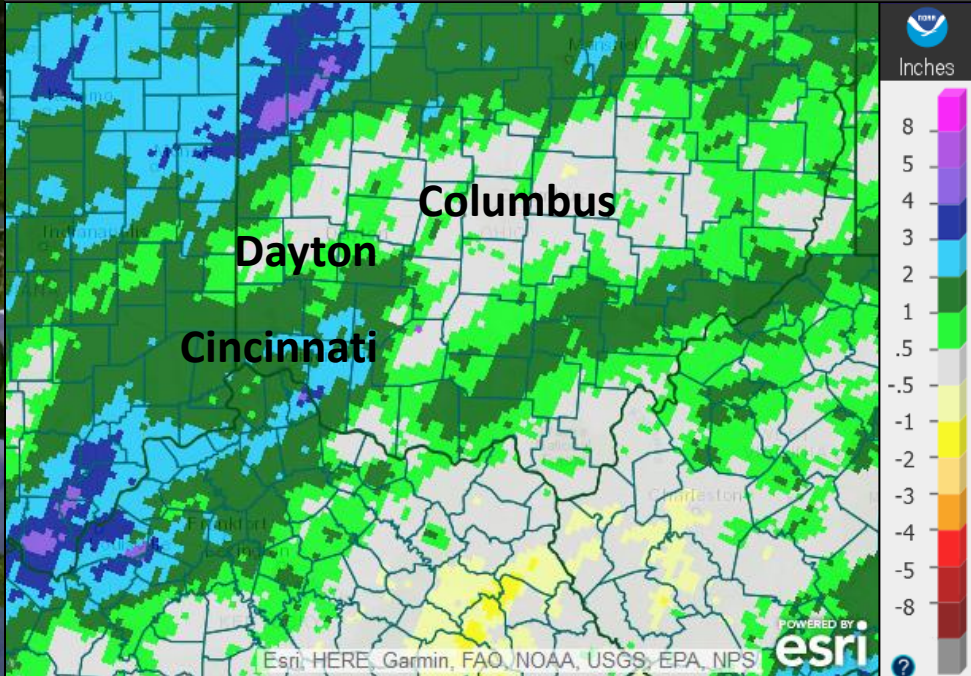
Site	Total Precipitation (in.)	Departure From Normal (in.)	Max Daily Precipitation (in./date)		Total Snowfall (in.)	Max Daily Snowfall (in./date)	
Cincinnati (CVG)	4.60 in.	+0.71 in.	1.25 in.	20th	0.0	N/A	N/A
Columbus (CMH)	3.55 in.	+0.15 in.	0.77 in.	19th	0.0	N/A	N/A
Dayton (DAY)	4.22 in.	+0.13 in.	1.10 in.	20th	T	T	15th



Precipitation (Continued)



April Precipitation Departure From Normal



Severe Weather

Multiple severe events occurred during the month of April. Three of the larger events that occurred were April 12th, April 14th, and April 25th.

Showers and thunderstorms moved across the region during the morning hours of April 12th. Several thunderstorm wind gusts and damage occurred. In addition, two tornadoes touched down in Clark County Ohio.

Additional severe storms moved through during the afternoon hours of April 14th. Hail, damaging winds, and a tornado occurred. The EF0 tornado occurred in Clark County Ohio In addition to the severe weather, gusty winds occurred for a large duration of the day.

As an area of surface low pressure moved northeast through the Ohio Valley and into the southern Great Lakes, several areas of showers and thunderstorms were able to develop during the afternoon and evening of April 25th. These storms produced moderate to heavy rainfall, which led to flooding in some locations. In addition, a few of the more organized cells showed signs of rotation, leading to several damage reports including an EF0 tornado in Darke County Ohio.



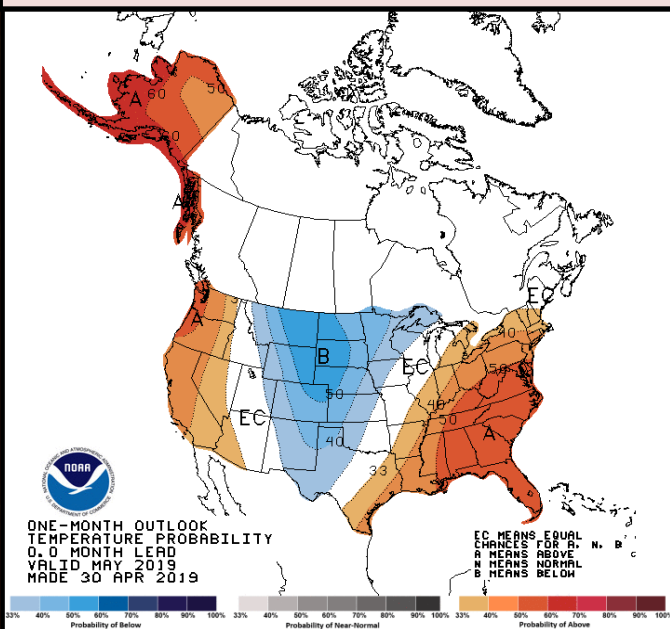
May Outlook

The latest outlook from the Climate Prediction Center calls for an increased likelihood of above normal temperatures and above normal precipitation.

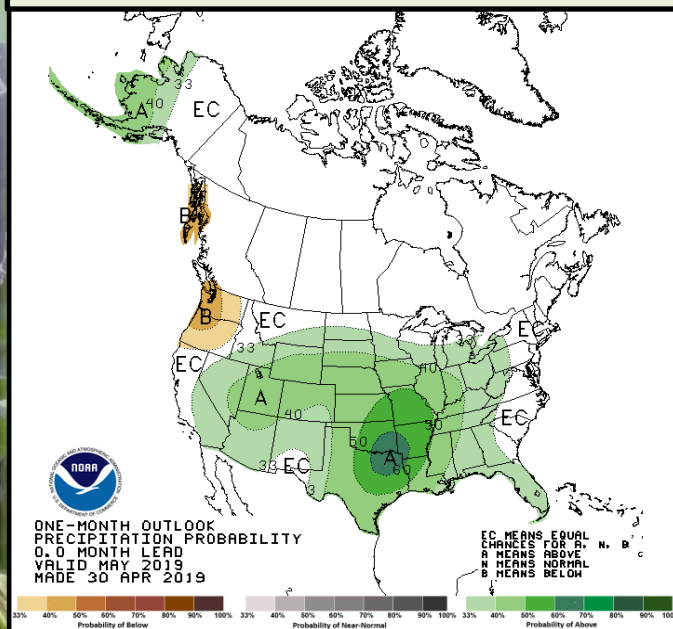
Site	Normal Avg Temp (°F)	Normal High (°F)	Normal Low (°F)
Cincinnati (CVG)	63.5°F	73.7°F	53.2°F
Columbus (CMH)	62.5°F	72.9°F	52.2°F
Dayton (DAY)	61.4°F	71.5°F	51.4°F

Site	Normal Precipitation (in.)	Normal Snowfall (in.)
Cincinnati (CVG)	4.93"	0.0"
Columbus (CMH)	4.17"	0.0"
Dayton (DAY)	4.66"	0.0"

Upcoming Temperature Outlook



Upcoming Precipitation Outlook

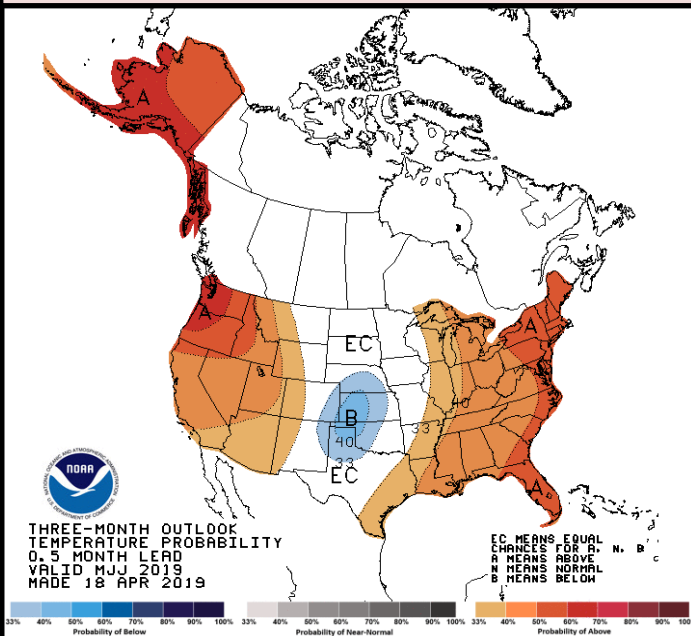


Late Spring/Early Summer Outlook

There is an increased likelihood of both above normal temperatures and above normal precipitation across the entire region for the May, June, and July timeframe.

El Niño conditions are expected to continue through the summer (65% chance) and possibly into the fall (50-55% chance). An El Niño advisory is in effect at this time.

Three-Month (MJJ) Temp. Outlook



Three-Month (MJJ) Precip. Outlook

