

# NWS Wilmington, Ohio

## April 2021

### Regional Climate Summary

## Regional Climate Summary

As is typical for an April weather pattern in the Ohio Valley, there were several large temperature fluctuations, accented by very warm conditions for the first part of April with a cooler-than-normal pattern for the 3<sup>rd</sup> week of the month.

This return to colder conditions brought very-late season accumulating snowfall to much of the region, despite an overall drier-than-normal month for many spots. April 2021 will largely be remembered for the historic late season snow event followed just days later by temperatures in the 80s.

# Temperatures

*The first couple days of the month featured well below normal temperatures. While temperatures on the third were still below normal, a warming trend began and by the 4<sup>th</sup> above normal temperatures were present with high temperatures in the 70s. By the 11<sup>th</sup>, cooler air brought temperatures closer to normal values.*

*The night of the 20<sup>th</sup>, temperatures dropped significantly. Over the next few days temperatures would sit well below normal.*

*Temperatures moderated over the next several days, with a more pronounced warmup developing by the 26<sup>th</sup>. Temperatures reached into the 70s and 80s for the final several days of April. A record high minimum temperature of 65 was tied at Columbus on the 28<sup>th</sup>. This previously occurred in 1914.*

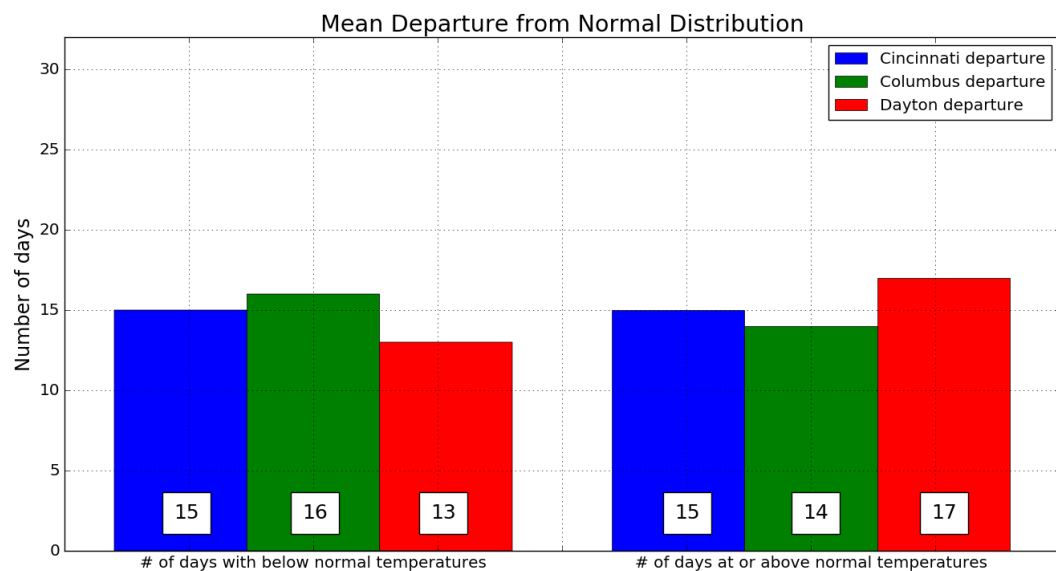
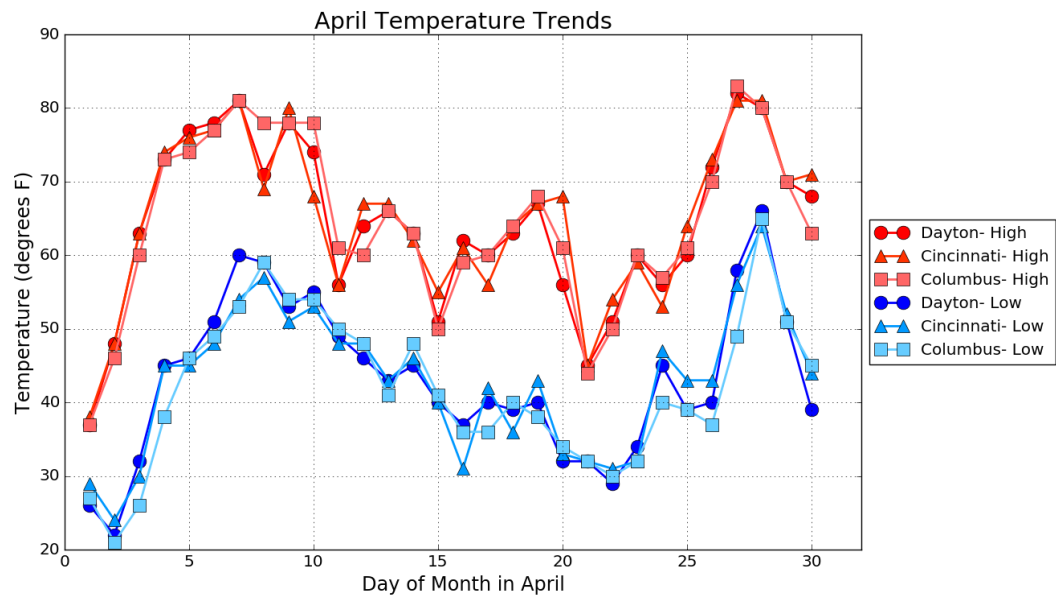
*The up-and-down nature of the temperature pattern yielded average temperatures that were generally very close to seasonal norms for the month as a whole.*

Site	Avg Temp (°F)	Avg High Temp (°F)	Avg Low Temp (°F)	Departure From Normal (°F)	Maximum Temperature (°F)	Minimum Temperature (°F)
Cincinnati (CVG)	54.0	64.9	43.0	-0.2	81 on 27 <sup>th</sup> /28 <sup>th</sup>	24 on 2 <sup>nd</sup>
Columbus (CMH)	53.2	64.4	42.0	+0.1	83 on 27 <sup>th</sup>	21 on 2 <sup>nd</sup>
Dayton (DAY)	53.8	64.4	43.1	+2.2	82 on 27 <sup>th</sup>	22 on 2 <sup>nd</sup>





# Temperatures (Continued)



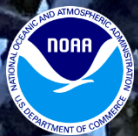
# Precipitation

*With the cold start to the month, some light snow was present on the 1<sup>st</sup>. The first week of the month yielded generally dry or light precipitation. The 8<sup>th</sup> through the 11<sup>th</sup> featured a period of unsettled weather with several days of precipitation. There were some wind damage reports on the 9<sup>th</sup> in Ohio.*

*After this time a week of relatively quiet weather persisted around the middle of the month. A strong cold front moved through on the 20<sup>th</sup> and into the 21<sup>st</sup>. Widespread accumulating snow occurred during this time. By the morning of the 21<sup>st</sup> it looked more like February outside than April. Due to the snow being this late in the season, by evening most of the snow had melted. Several rounds of precipitation, including additional snow, continued into the 22<sup>nd</sup>. A record snowfall of 2.4 inches was set at Cincinnati on the 21<sup>st</sup>. This breaks the old record of 1.5 set in 1901. A record snowfall of 0.8 inches was set at Dayton, Ohio on April 20<sup>th</sup>. This breaks the old record of 0.4 set in 2013.*

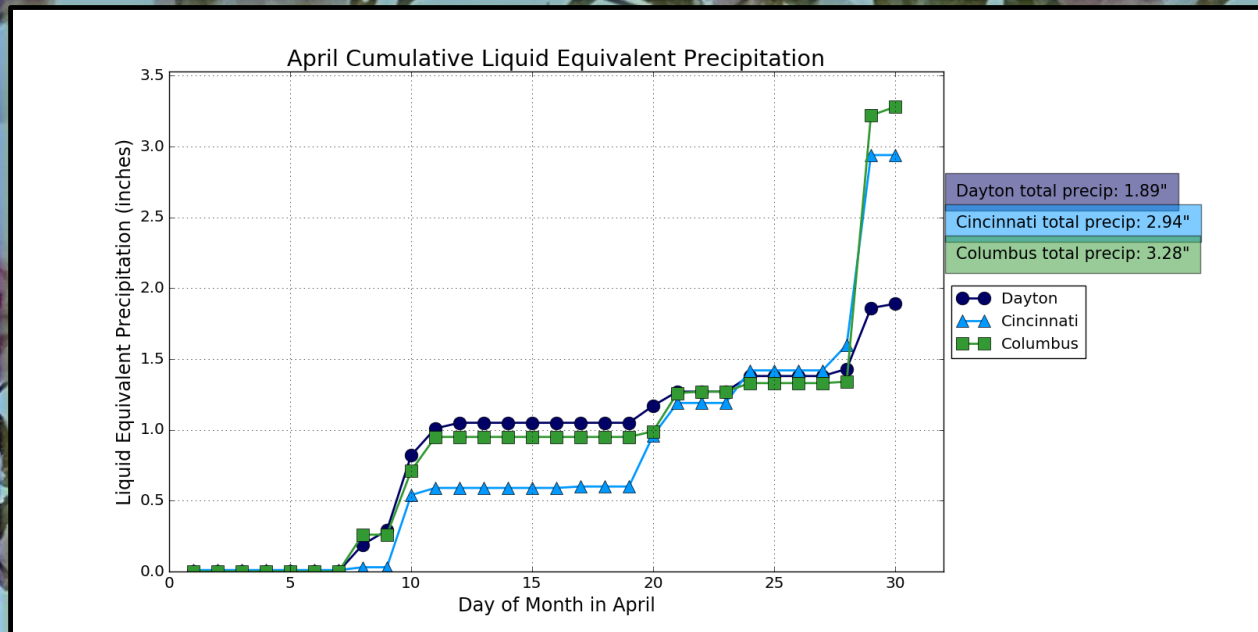
*Temperatures warmed for the last week of the month bringing an end to the snow. Widespread precipitation on the 29<sup>th</sup> occurred with many areas receiving over an inch of rain. A record rainfall of 1.88 inches was set at Columbus on April 29<sup>th</sup>. This breaks the old record for the day of 1.82 inches set in 1996.*

Site	Total Precipitation (in.)	Departure From Normal (in.)	Max Daily Precipitation (in./date)		Total Snowfall (in.)	Max Daily Snowfall (in./date)	
Cincinnati (CVG)	2.94	+2.8	1.34	29 <sup>th</sup>	2.8	2.4	21 <sup>st</sup>
Columbus (CMH)	3.28	-0.12	1.88	29 <sup>th</sup>	1.2	1.2	21 <sup>st</sup>
Dayton (DAY)	1.89	-2.20	0.53	10 <sup>th</sup>	2.5	1.7	21 <sup>st</sup>

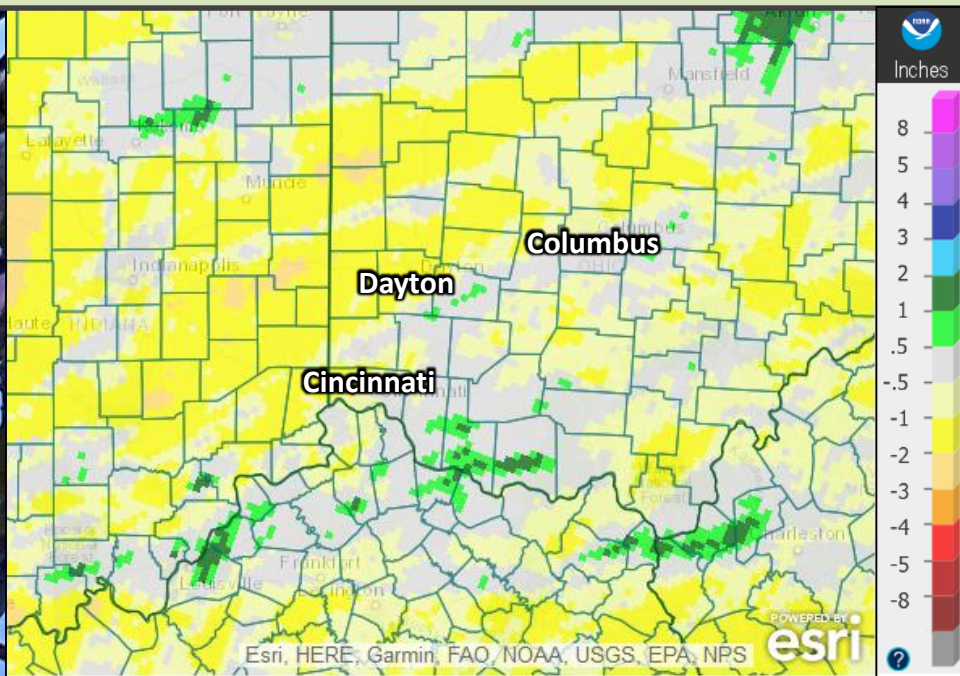




# Precipitation (Continued)



## April Precipitation Departure From Normal (In.)

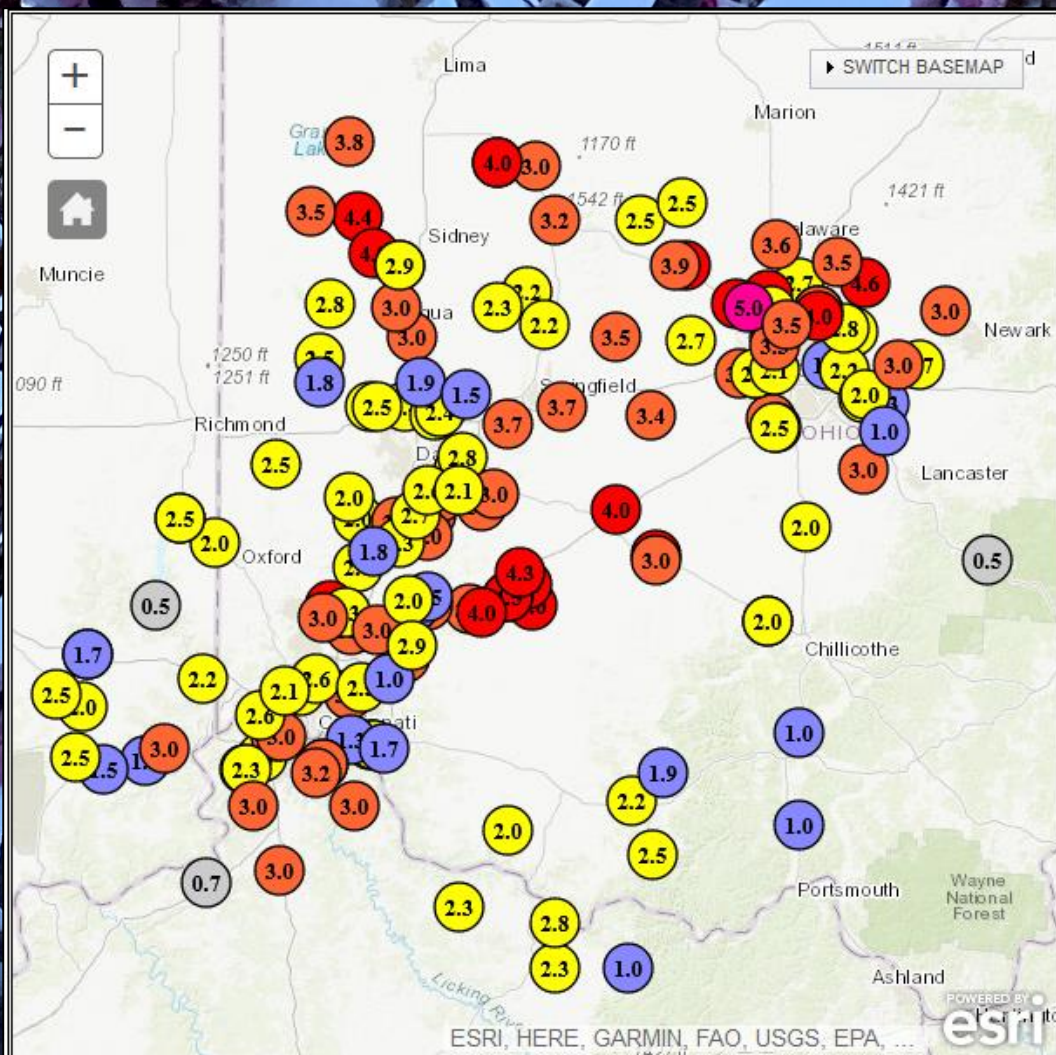




# Winter Weather

*An unseasonably cold low pressure system lifted northeast through the Ohio Valley during the overnight hours of the 20<sup>th</sup> to the 21<sup>st</sup>, producing widespread accumulating snow across the region.*

Snow/Sleet <1" <2" <3" <4" <5" <6" >=6"



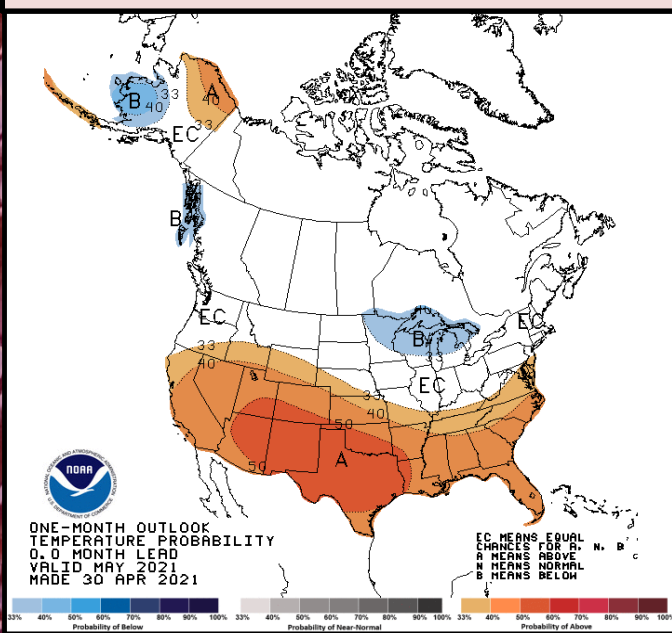
# May Outlook

*The latest outlook from the Climate Prediction Center calls for an increased likelihood of above normal precipitation. There are equal chances of above, below, and normal precipitation.*

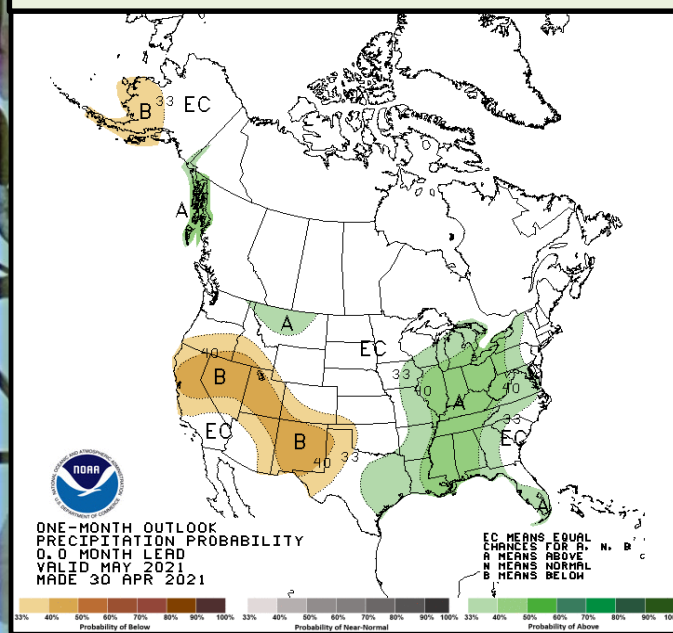
Site	Normal Avg Temp (°F)	Normal High (°F)	Normal Low (°F)
Cincinnati (CVG)	63.5	73.7	53.2
Columbus (CMH)	62.5	72.9	52.2
Dayton (DAY)	61.4	71.5	51.4

Site	Normal Precipitation (in.)	Normal Snowfall (in.)
Cincinnati (CVG)	4.93	0.0
Columbus (CMH)	4.17	0.0
Dayton (DAY)	4.66	0.0

## Upcoming Temperature Outlook



## Upcoming Precipitation Outlook



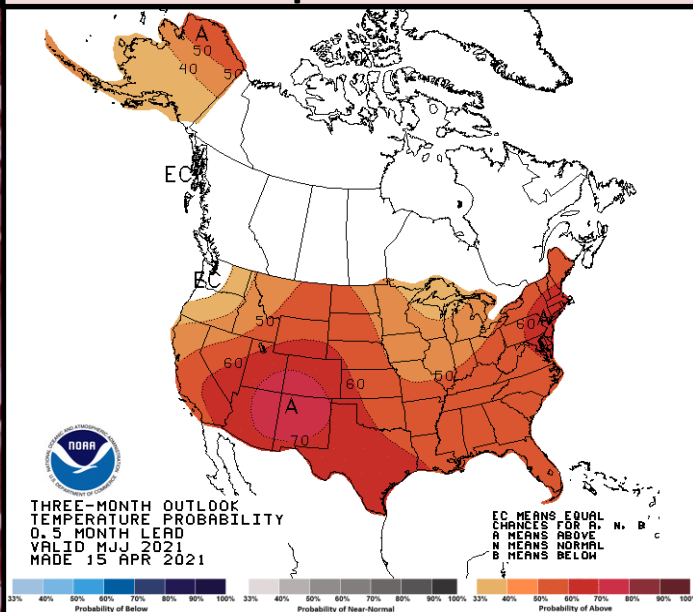


# May-July Outlook

*The latest outlook from the Climate Prediction Center calls for an increased likelihood of above normal temperatures and above normal precipitation for the entire region.*

*A transition from La Niña to ENSO-Neutral conditions is likely in the next month or so, with an 80% chance of ENSO-neutral during the May-July timeframe.*

## Three-Month (MJJ) Temp. Outlook



## Three-Month (MJJ) Precip. Outlook

