

# NWS Wilmington, Ohio December 2020 Regional Climate Summary

## Regional Climate Summary

*After the 1<sup>st</sup>, December featured a relatively quiet weather pattern for much of the first half of the month. The final full week of the month featured multiple systems moving through the region. Some locations saw their first winter storm of the season. Another system brought widespread soaking rain on the 30<sup>th</sup> into the 31<sup>st</sup>. Meanwhile, the pattern featured its normal ups and downs typical of an Ohio Valley December pattern, with average temperatures generally ending a few degrees above normal for the month as a whole.*

# Temperatures

*Subtle fluctuations in temperatures from slightly below normal, slightly above normal, and slightly below normal again occurred in the first week of the month. Going into the second week, a warmup occurred with temperatures in the 50s and 60s from the 9th through the 12th. A cool down occurred on the 13th bringing a return to values closer to normal for the better part of the next week before once again trending back above normal around the 20<sup>th</sup> or so.*

*The first major winter storm of the season arrived on Christmas Eve as temperatures plunged below normal and a low pressure system tracked along the spine of the Appalachians. With fresh snowpack and ample cloud cover and some lingering snow showers, Christmas Day was one of the coldest in recent memory as highs only reached into the teens to around 20°F.*

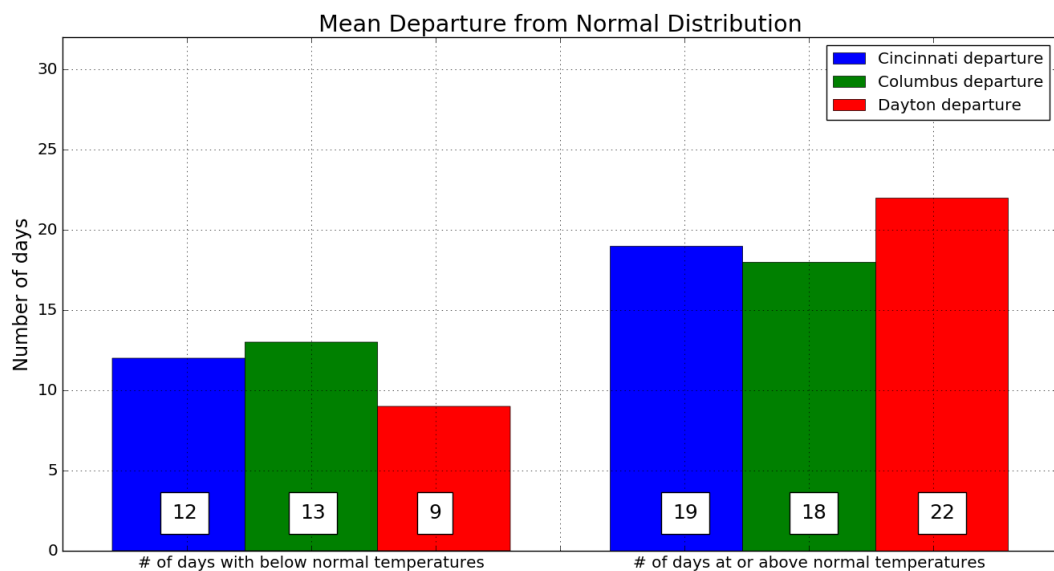
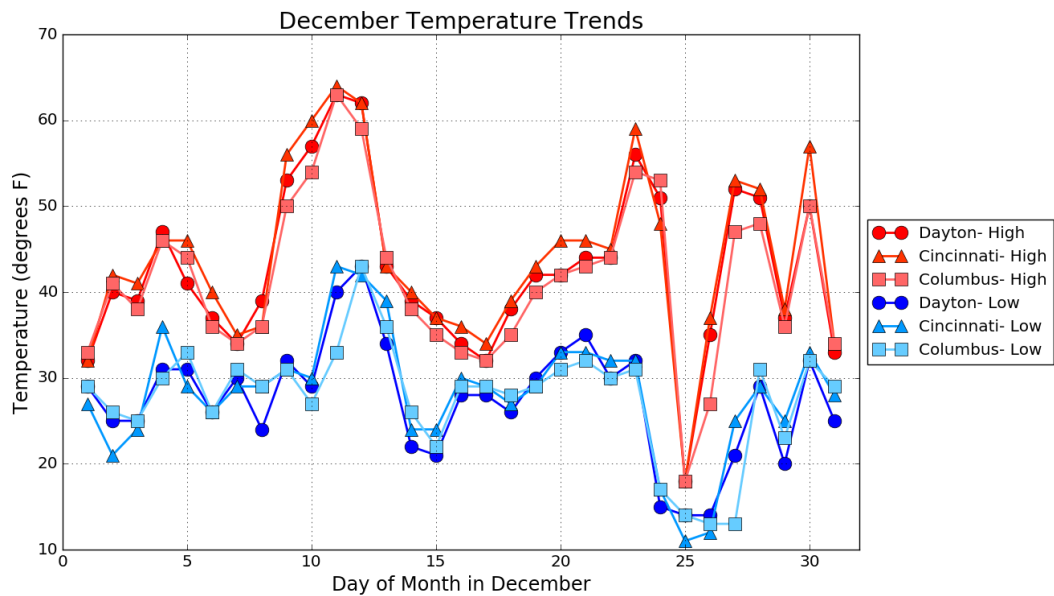
*The wintry cold didn't last too long as temperatures once again trended above normal by the 27<sup>th</sup> and lasted until the final day of 2020 when a cold front brought much more seasonable air into the region for the start of the New Year.*

*Overall, average temperatures ended up slightly above normal for the month as a whole.*

Site	Avg Temp (°F)	Avg High Temp (°F)	Avg Low Temp (°F)	Departure From Normal (°F)	Maximum Temperature (°F)	Minimum Temperature (°F)
Cincinnati (CVG)	36.2°F	44.0°F	28.4°F	+ 2.1°F	64°F (12/11)	11°F (12/25)
Columbus (CMH)	34.6°F	41.5°F	27.7°F	+ 1.1°F	63°F (12/11)	13°F (Mult.)
Dayton (DAY)	35.1°F	42.6°F	27.5°F	+ 3.9°F	63°F (12/11)	14°F (Mult.)



# Temperatures (Continued)



# Precipitation

*After snow at the start of the month, generally quiet conditions developed. A system moving through on the 12th brought with it rain, gusty winds, and then a cool down. The 16th and 17th brought a return of some accumulating snow to the area, with lighter snow on the 18th. Rain moved into the region on the 19th. While many locations saw rain with this event, a little bit of snow also mixed in primarily across central Ohio. Rain and drizzle moved out of the area during the morning hours, bringing a return to dry conditions. Bands of rain and breezy conditions moved across during the day on the 21st.*

*The major story of the month was the winter storm which impacted the region Christmas Eve into Christmas Day. Initially, rain changed to snow before a steady, broad band of snow developed across the eastern half of the local area during the evening on Christmas Eve. This band of snow brought 3-6" to portions of south-central and central Ohio, with isolated higher amounts in excess of 7"!*

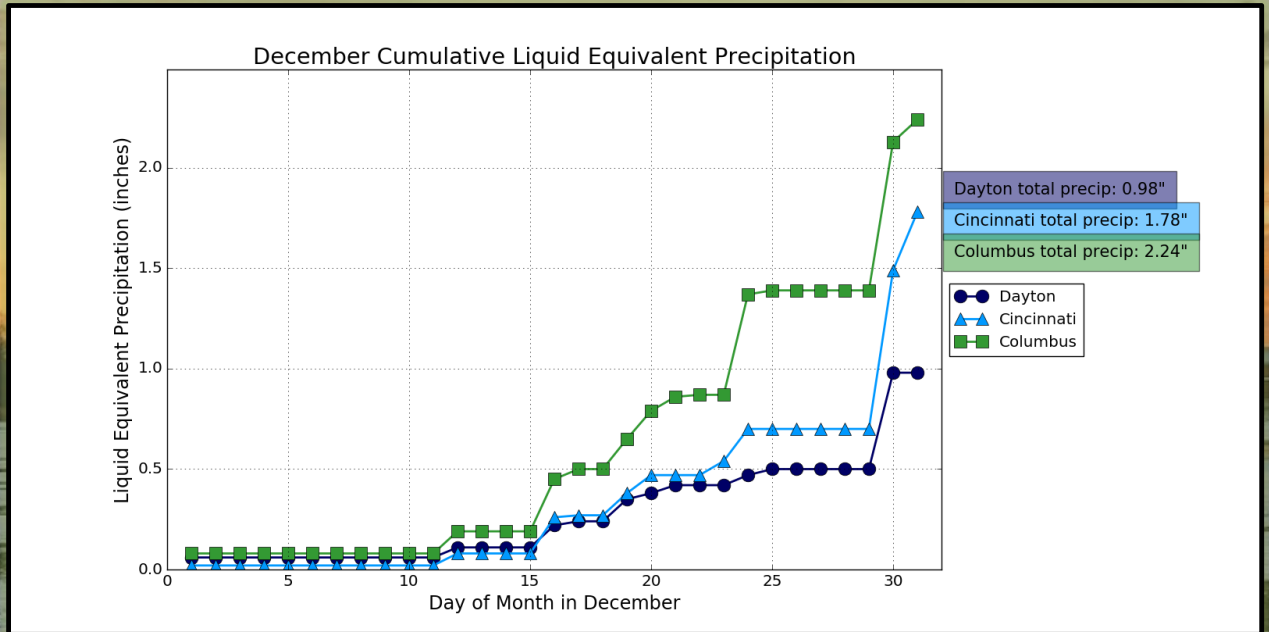
*While many received accumulating snowfall on Christmas Eve, many locales in the Tri-State area and west-central Ohio missed out. In fact, most of the local area remained fairly dry overall until the final 2 days of the year, when a system brought about an inch of rain to the local area. However, even with this healthy rainfall, most of the region still ended the month with slightly below normal precipitation.*

Site	Total Precipitation (in.)	Departure From Normal (in.)	Max Daily Precipitation (in./date)		Total Snowfall (in.)	Max Daily Snowfall (in./date)	
Cincinnati (CVG)	1.78"	-1.59"	0.79"	12/30	1.5"	1.0	12/16
Columbus (CMH)	2.24"	-0.73"	0.74"	12/30	8.5"	3.4	12/24
Dayton (DAY)	0.98"	-2.14"	0.48"	12/30	4.1"	1.4"	12/01

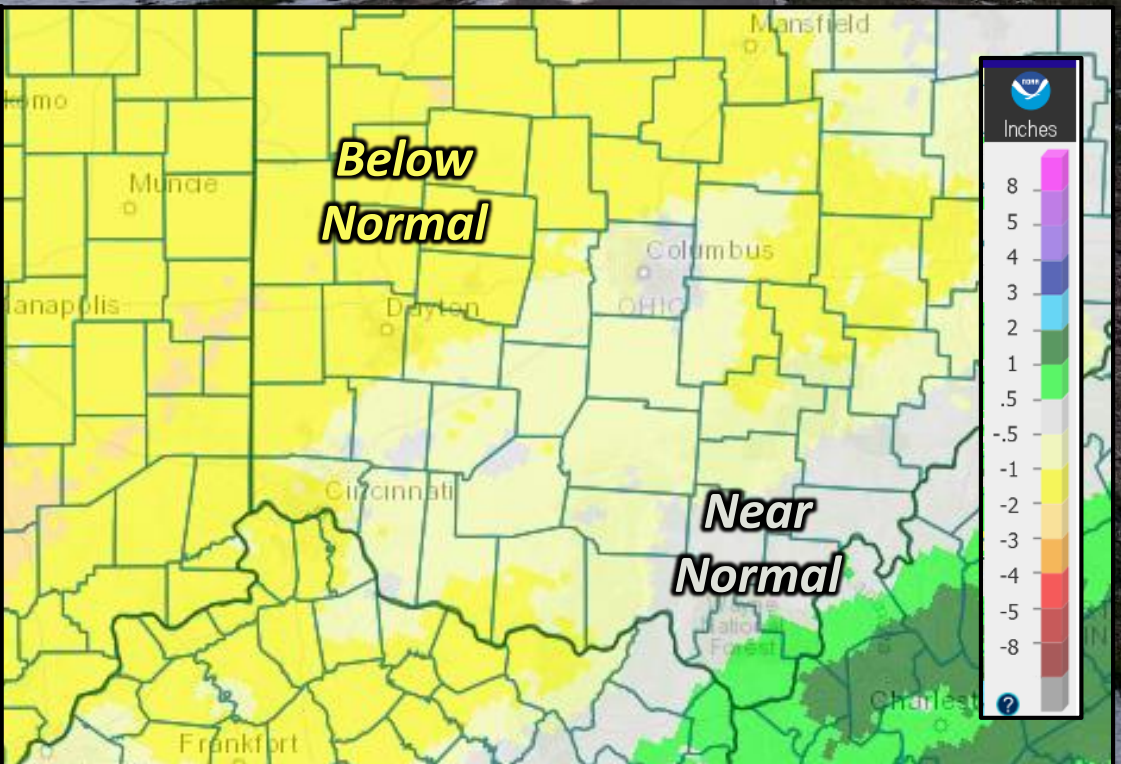




# Precipitation (Continued)



December Precipitation  
Departure From Normal (In.)



# Winter Weather

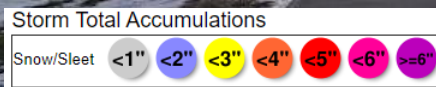
## ***November 30<sup>th</sup> to December 1<sup>st</sup>***

During the transition from November to December, accumulating snow moved across the area. A wide range in values occurred from less than an inch to over 5 inches of snow leading into the first day of December, with the highest totals in portions of central and south-central Ohio.

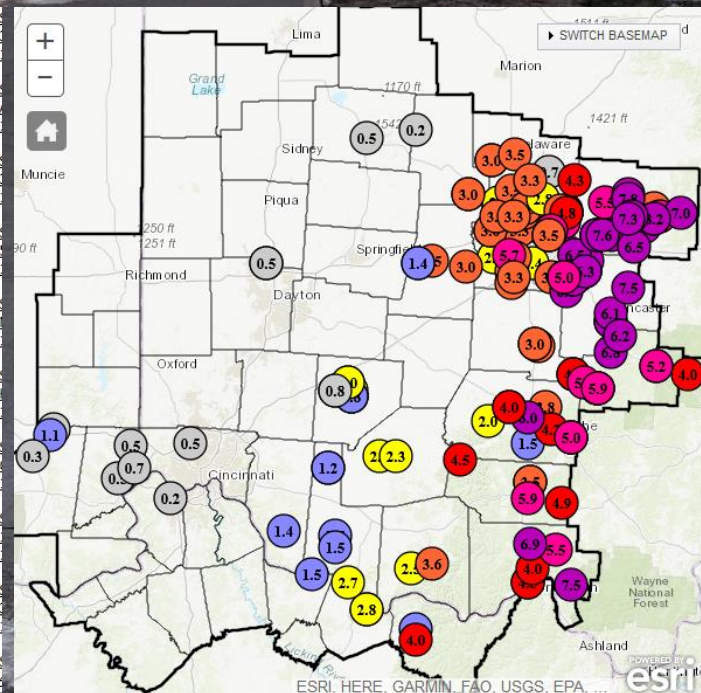
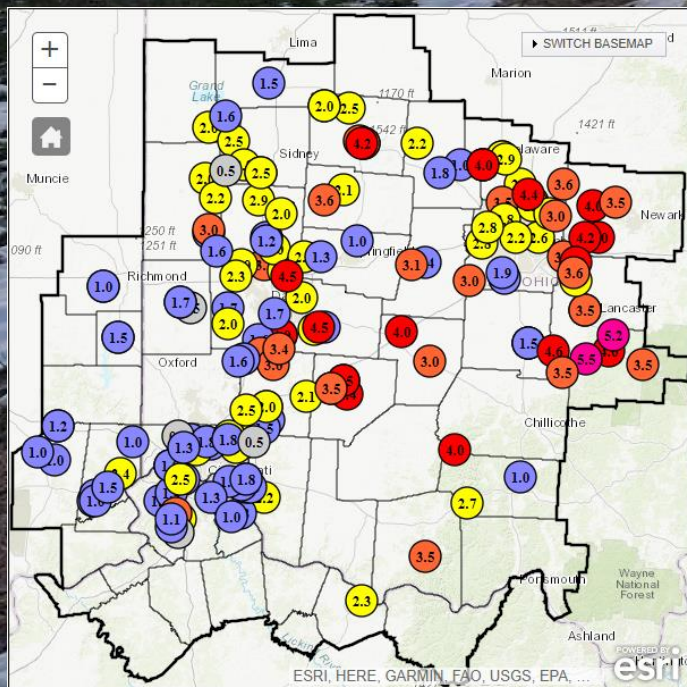
## ***December 24<sup>th</sup> to 25<sup>th</sup>***

A winter storm evolved in the local area from the late afternoon into the evening hours, producing a 6-hour window of steady, heavy snow from south-central Ohio through central Ohio. Many locations in this north-south oriented corridor received as much as 5-7" of snow, while others just to the west received little to no snow at all.

### ***November 30 – December 1***



### ***December 24 - 25***





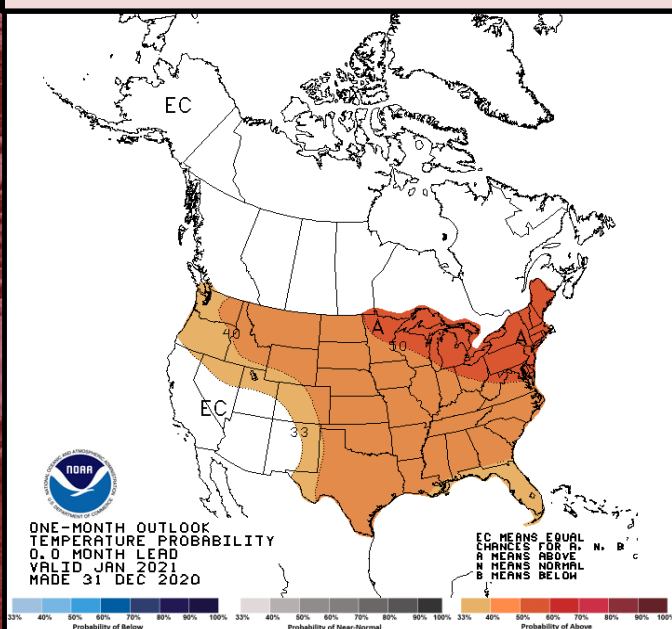
# January Outlook

*The latest outlook from the Climate Prediction Center calls for an increased likelihood of above normal temperatures and above normal precipitation.*

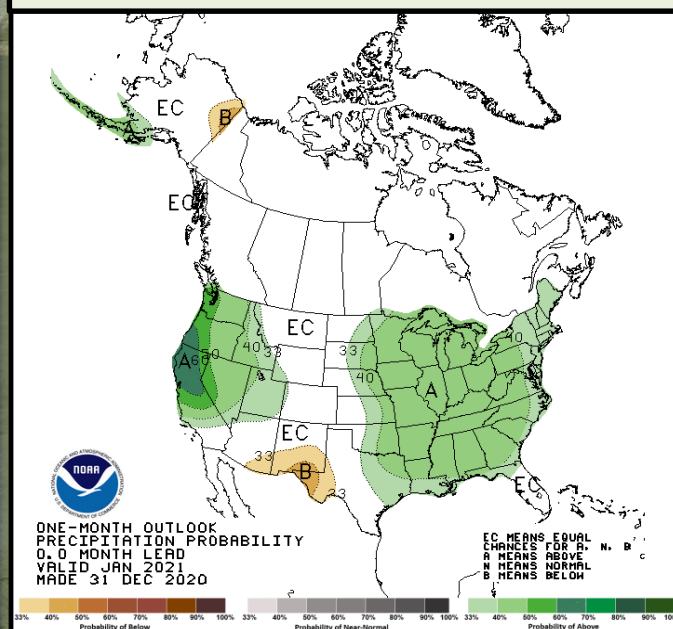
Site	Normal Avg Temp (°F)	Normal High (°F)	Normal Low (°F)
Cincinnati (CVG)	30.8°F	38.7°F	23.0°F
Columbus (CMH)	29.6°F	36.5°F	22.6°F
Dayton (DAY)	27.5°F	34.7°F	20.3°F

Site	Normal Precipitation (in.)	Normal Snowfall (in.)
Cincinnati (CVG)	3.00"	6.5"
Columbus (CMH)	2.73"	9.2"
Dayton (DAY)	2.71"	7.9"

## Upcoming Temperature Outlook



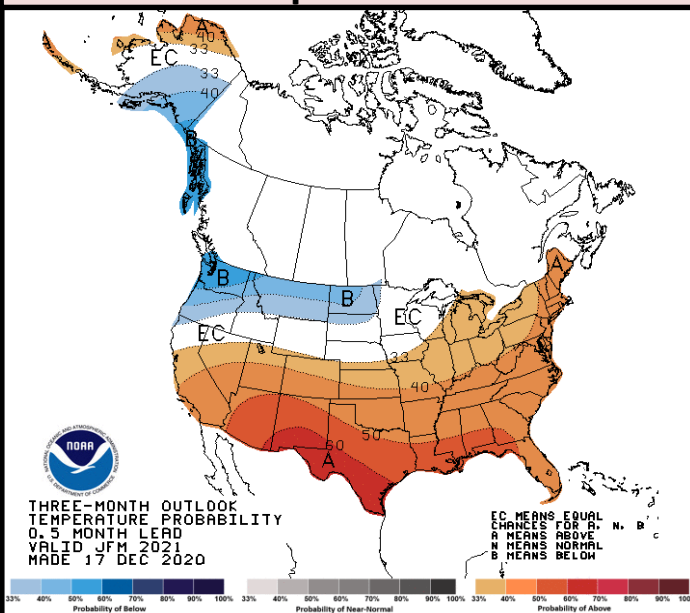
## Upcoming Precipitation Outlook



# January-March Outlook

*The Climate Prediction Center is calling for an increased likelihood of above normal temperatures and above normal precipitation. La Niña is expected to continue through the January to March time frame. There is a 95% chance of La Niña during this time. There is a 50% chance of a potential transition to neutral conditions during the April to June time frame.*

## Three-Month (JFM) Temp. Outlook



## Three-Month (JFM) Precip. Outlook

