



# NWS Wilmington, Ohio February 2020 Regional Climate Summary

## Regional Climate Summary

***Although the weather pattern in February featured a handful of light snow events, the trend of a winter season without much cold or snow continued right through the final “winter” month of the season. Temperatures never strayed too far from seasonal normals but did bounce up and down before and after the passage of several systems. The region was impacted by 5 or 6 different light snow events through the month, each which delivered anywhere from 1 to 3 inches of white stuff in different parts of the local area.***

# Temperatures

*There were several temperature fluctuations during the month of February. The month started out well above normal with the 2<sup>nd</sup> through 4<sup>th</sup>, with average temperatures 10 to 25 degrees above normal during this several day stretch.*

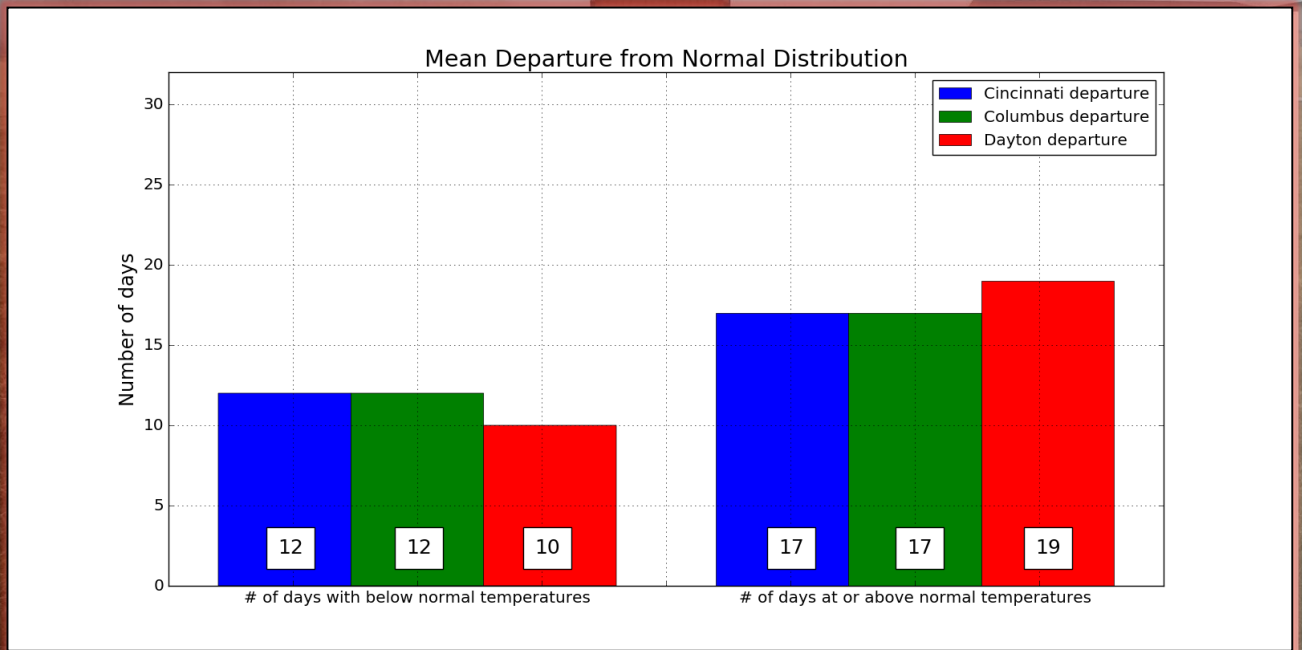
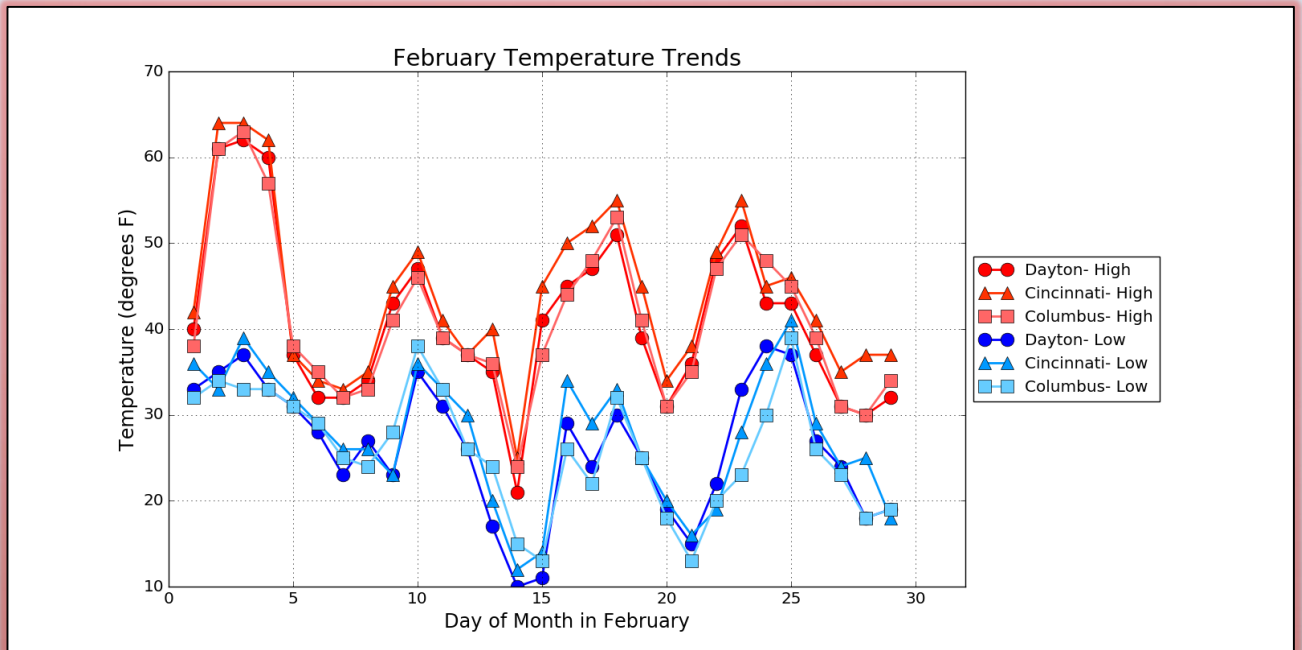
*Through most of the remaining portions of the month there were three to four days of above normal temperatures followed by two to three days of below normal temperatures.*

*Since there was never a deep snowpack in place that lasted very long, temperatures never got extremely cold for February. There were some temperature records during the month of February. A record high temperature of 63F was tied at Columbus on February 3<sup>rd</sup>. This temperature tied the record value set in 1890. 62F was observed at Dayton for the day. This value tied the record value set in 1927. But overall, the temperatures over the final 3 weeks of the month never strayed too far from daily average normals. In fact, with numerous days with highs in the 30s and 40s and lows in the 20s, the region never really experienced any drastic temperature swings through the month, with most locations ending up a degree or two above normal for the month as a whole.*

Site	Avg Temp (°F)	Avg High Temp (°F)	Avg Low Temp (°F)	Departure From Normal (°F)	Maximum Temperature (°F)	Minimum Temperature (°F)
Cincinnati (CVG)	35.7°F	43.9°F	27.6°F	+ 1.2°F	64°F (Mult. Days)	12°F (02/14)
Columbus (CMH)	33.6°F	41.2°F	25.9°F	+ 0.8°F	63°F (02/03)	13°F (Mult. Days)
Dayton (DAY)	33.6°F	40.9°F	26.2°F	+ 2.6°F	62°F (02/03)	10°F (02/14)



# Temperatures (Continued)



# Precipitation

Several rounds of precipitation moved through during the month, including a few snowfall events as well. Precipitation at the start of the month was primarily in the form of rain due to the above normal temperatures. As some cooler air started to work into the region, there were a couple of snowfall events on the 7<sup>th</sup> and the 8<sup>th</sup>.

The February 12<sup>th</sup> event featured both rain and snow, with heavier rain occurring near and south of the Ohio River and accumulating snow near and north of Interstate 70. Precipitation amounts after this time were generally lighter in nature until later in the month when an unsettled weather pattern began to take shape. Several rounds of precipitation moved through the region from the 24<sup>th</sup> through the end of the month, with most locations ending the month slightly above normal from a precipitation perspective.

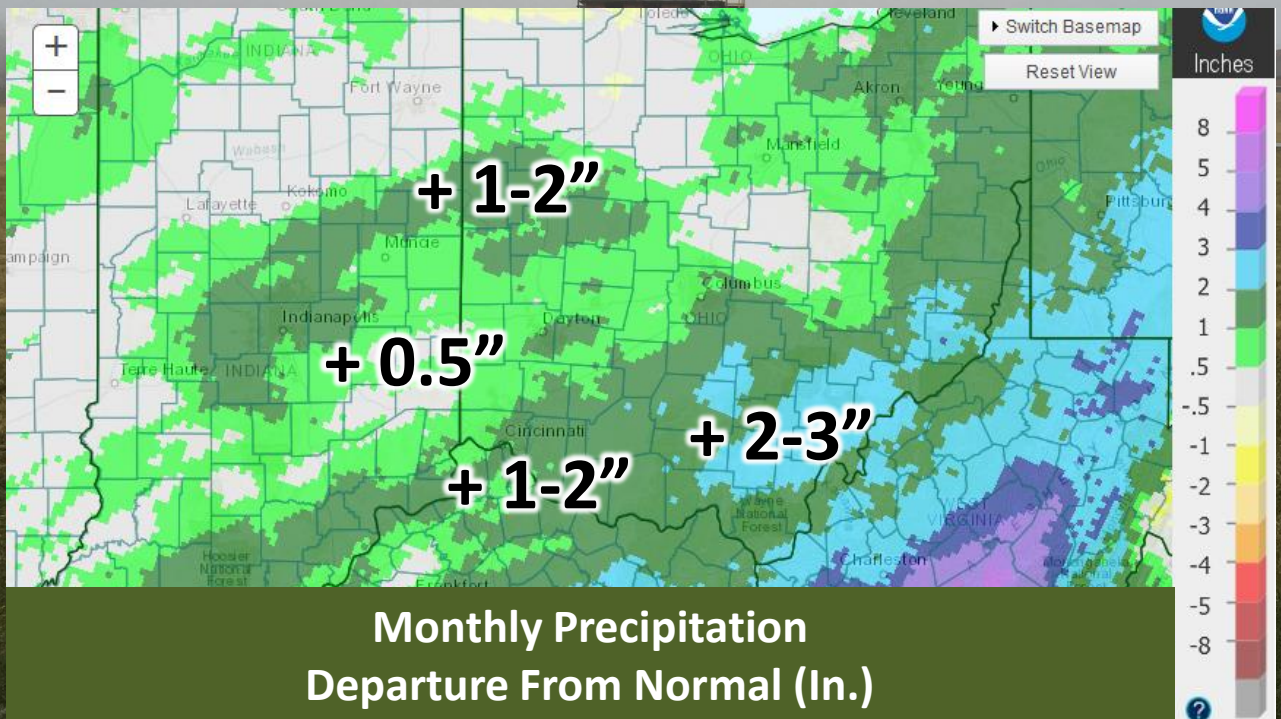
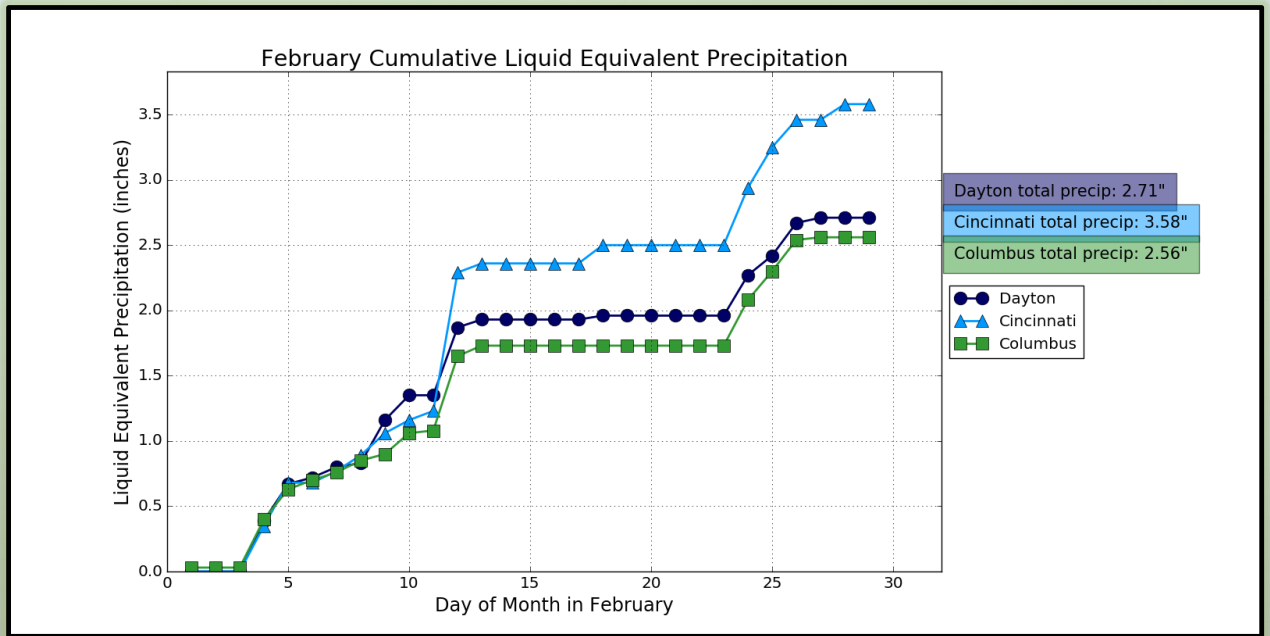
Unlike in the months of December and January, the weather pattern in February did feature a handful of light snow events, each which impacted different parts of the local area. None of the events featured snow that was particularly heavy. In fact, snowfall generally ranged from a dusting to as much as 3-4," depending on exact location. Most of these light snow events impacted locations near/north of I-70, although many spots in general ended the month picking up anywhere from 4-10" in total (south to north, respectively).

Site	Total Precipitation (in.)	Departure From Normal (in.)	Max Daily Precipitation (in./date)		Total Snowfall (in.)	Max Daily Snowfall (in./date)	
Cincinnati (CVG)	3.58"	+ 0.77"	1.06"	02/12	4.8"	1.8"	02/07
Columbus (CMH)	2.56"	+ 0.31"	0.57"	02/12	5.7"	1.8"	02/08
Dayton (DAY)	2.71"	+ 0.47"	0.52"	02/12	9.6"	2.5"	02/12





# Precipitation (Continued)



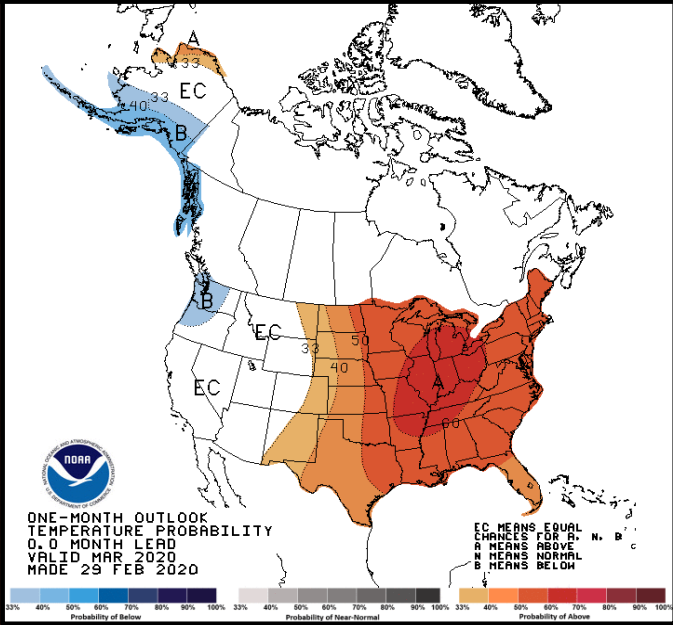
# March Outlook

The latest outlook from the Climate Prediction Center (CPC) indicates very favorable/high probabilities for above normal temperatures and precipitation across the region through the month of March.

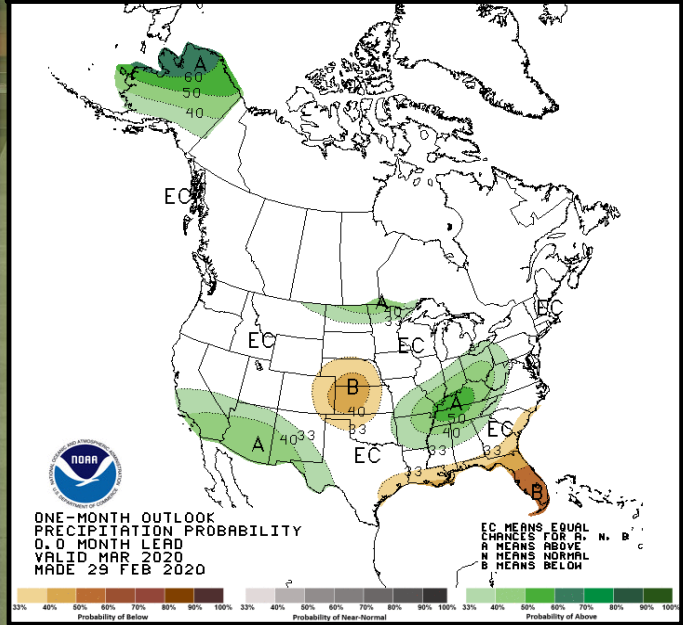
Site	Normal Avg Temp (°F)	Normal High (°F)	Normal Low (°F)
Cincinnati (CVG)	43.6°F	53.2°F	34.0°F
Columbus (CMH)	41.9 °F	51.1°F	32.7°F
Dayton (DAY)	40.4°F	49.6°F	31.2°F

Site	Normal Precipitation (in.)	Normal Snowfall (in.)
Cincinnati (CVG)	3.96"	3.0"
Columbus (CMH)	3.02"	4.2"
Dayton (DAY)	3.34"	3.4"

## Upcoming Temperature Outlook



## Upcoming Precipitation Outlook



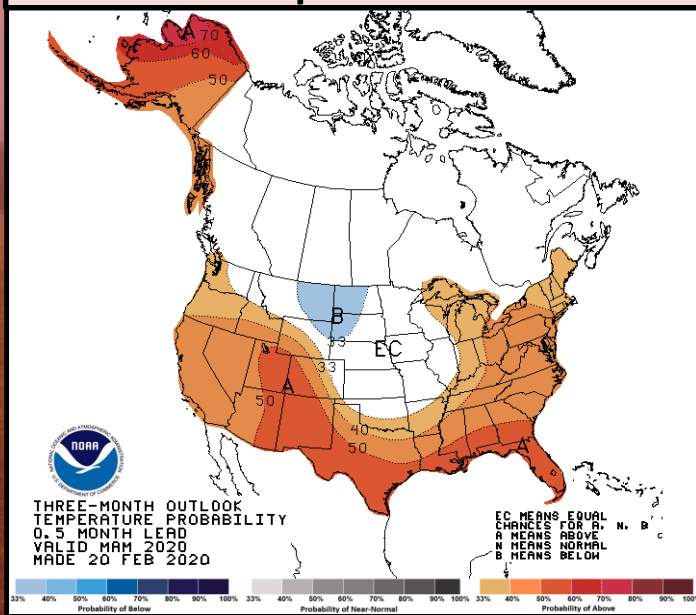


# March-May Outlook

*There is an increased likelihood of above normal temperatures and above normal precipitation across the entire region for the March through May timeframe.*

*According to the Climate Prediction Center ENSO-neutral conditions are expected to continue through the spring (60% chance) and potentially through the summer as well (50% chance).*

## Three-Month (MAM) Temp. Outlook



## Three-Month (MAM) Precip. Outlook

