



NWS Wilmington, Ohio January 2020 Regional Climate Summary

Regional Climate Summary

Temperatures overall during the month of January were well above normal, with only a few days of below normal temperatures. These above normal temperatures led to very low snowfall values for the month and also led to severe weather. This severe weather included damaging wind gusts and two tornadoes.

Temperatures

It may have been January, but everything about the temperatures during the month said “March,” with brief bouts of cold weather interspersed with extended periods of highs in the 50s and 60s and lows in the 20s and 30s. In fact, through the first half of the month, every day featured daily average temperatures that were above normal. In fact, a daily record was broken at Columbus (CMH) on the 11th (71°F), breaking the old daily record of 66°F set in 1890. A daily record high minimum of 45°F was also tied at the site the day before. A daily record high of 67°F was tied and a daily record warm low of 49°F was set at Cincinnati (CVG) on the 11th and 10th, respectively. The low of 47°F and high of 67°F on the 10th and 11th, respectively, set daily records at Dayton (DAY) as well.

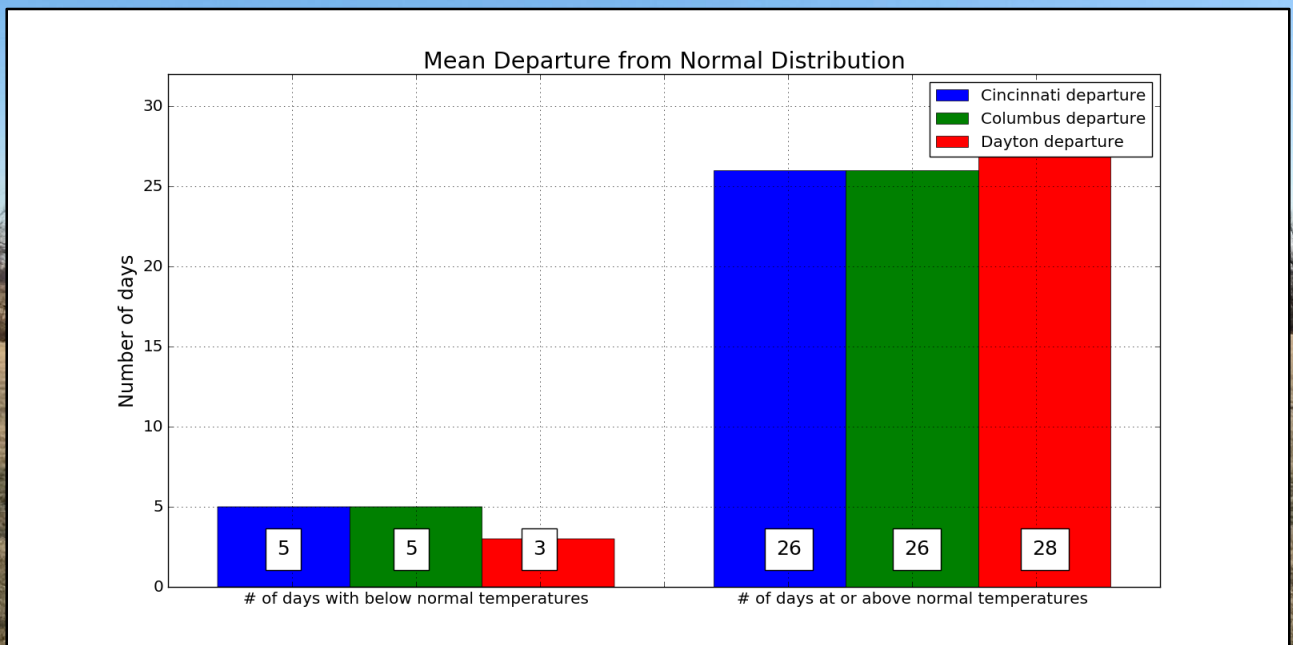
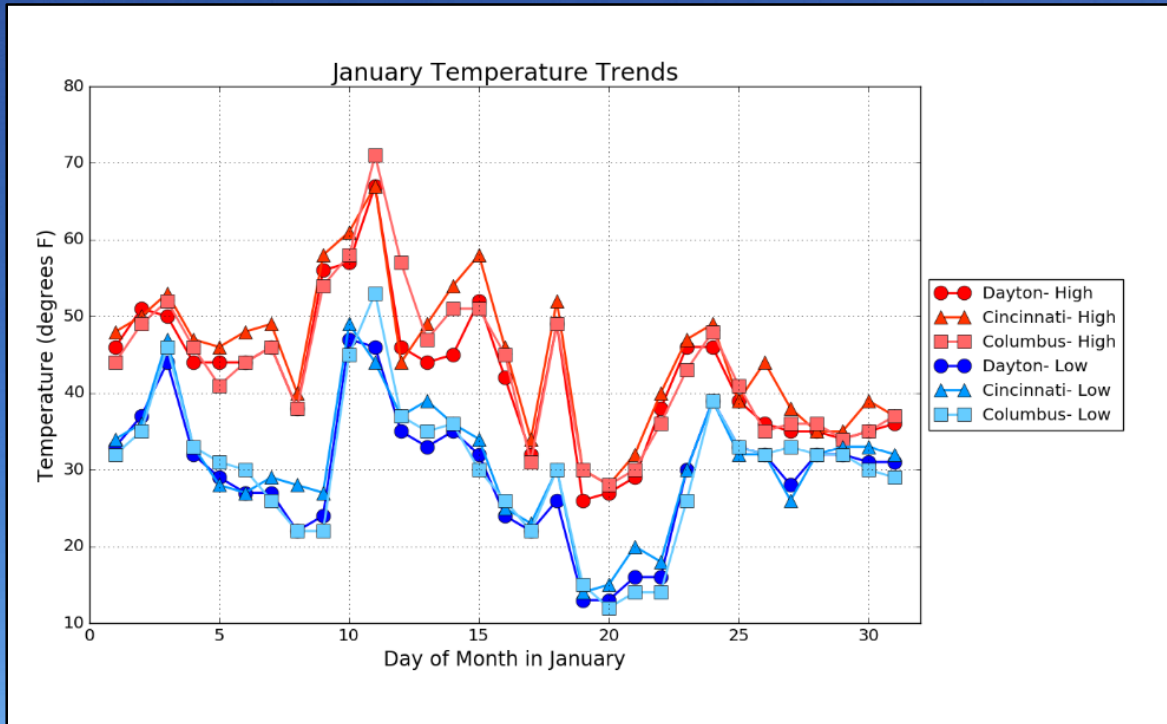
There was a three to five day period just after the mid point of the month where locations saw below normal temperatures, otherwise above normal temperatures were generally the rule for the month.

While above normal temperatures were present for a majority of the month, there was still a wide range in temperatures for the month with the highest temperatures reaching into the upper 60s and even into the 70s. The low temperatures at the coolest point in the month dropped into the teens or even a little lower in some spots.

Site	Avg Temp (°F)	Avg High Temp (°F)	Avg Low Temp (°F)	Departure From Normal (°F)	Maximum Temperature (°F)	Minimum Temperature (°F)
Cincinnati (CVG)	38.1°F	45.1°F	31.0°F	+7.2°F	67°F on 11th	14°F on 19th
Columbus (CMH)	36.7°F	43.3°F	30.1°F	+7.1°F	71°F on 11th	12°F on 20th
Dayton (DAY)	36.1°F	42.4°F	29.7°F	+8.6°F	67°F on 11th	13°F on 19/20



Temperatures (Continued)



Precipitation

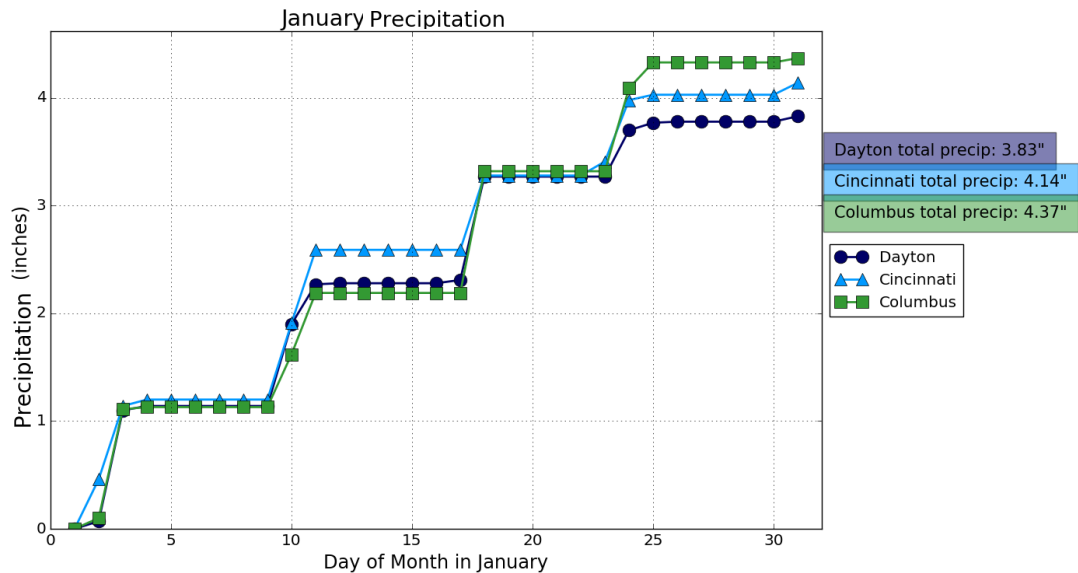
Although the month wasn't overly wet (or white), there were several steady/heavy rain events that impacted the region in January. Almost like clockwork, these systems seemed to be spaced out temporally every 6-7 days or so, each of them bringing between 0.5" and 1.5," depending on exact location. The first of these systems moved through from the 2nd-3rd, then again from the 10th-11th, then again on the 18th, and again from the 24th-25th. Although each system brought a distinctly different rainfall footprint to the local area, total rainfall for the month seemed to be 3.5" to 4.5," with some natural spatial variation. A record rainfall value of 1.13 inches was set at the John Glenn Columbus International Airport on January 18th. This broke the old record of 0.79 inches that was set in 1927.

Although precipitation was generally above normal, with the persistent above normal temperatures that evolved through the month, snowfall was very limited. Cincinnati has the 11th lowest snowfall for January, Columbus was 5th lowest snowfall, and Dayton 9th lowest. All three sites had less than an inch of snowfall for January.

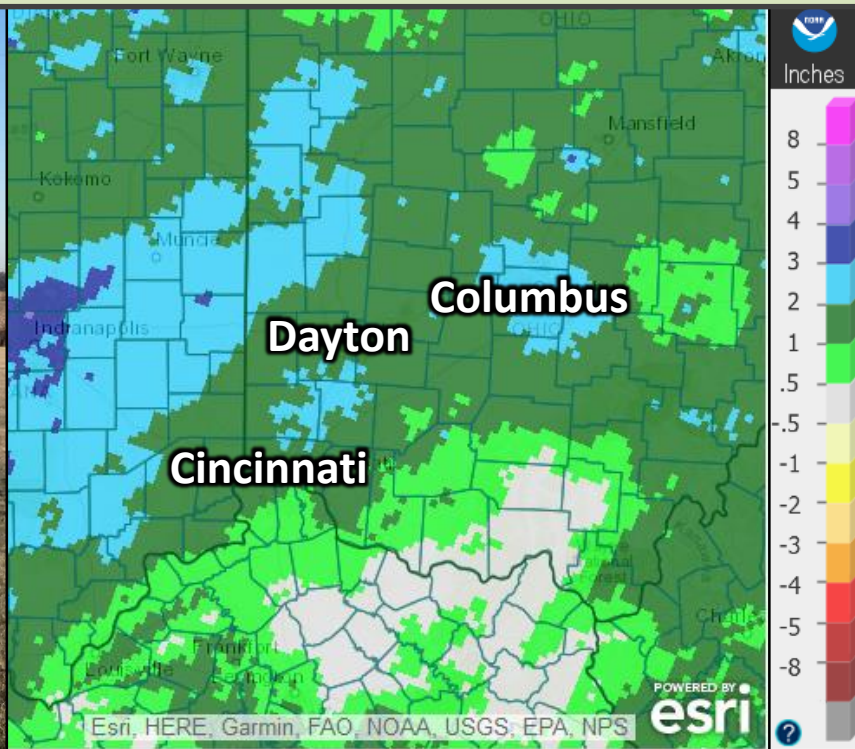
Site	Total Precipitation (in.)	Departure From Normal (in.)	Max Daily Precipitation (in./date)		Total Snowfall (in.)	Max Daily Snowfall (in./date)	
Cincinnati (CVG)	4.14 in	+1.14 in.	0.71	10th	0.7 in.	0.7 in.	31st
Columbus (CMH)	4.37 in.	+1.64 in.	1.13	18th	0.3 in.	0.2 in.	25th
Dayton (DAY)	3.83 in.	+1.12 in.	1.03	3rd	0.9 in.	0.3 in.	19th, 25th, 31st



Precipitation (Continued)



January Precipitation Departure From Normal (In.)



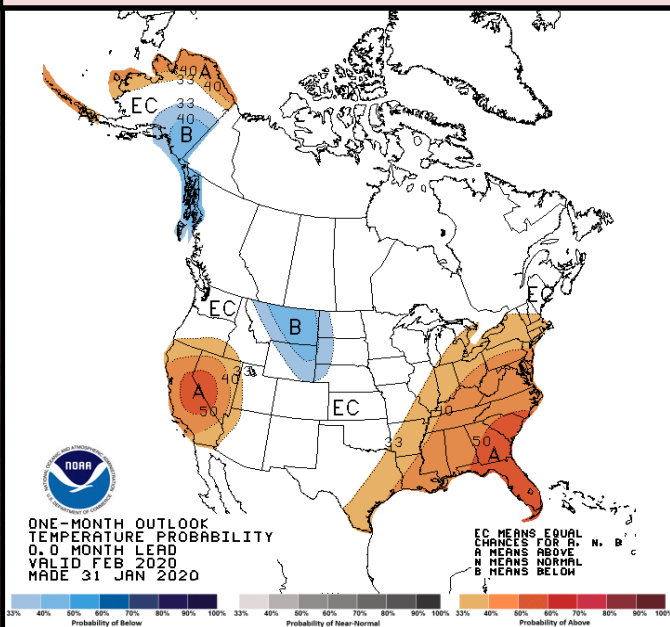
February Outlook

The latest outlook from the Climate Prediction Center calls for an increased likelihood of above normal temperatures. There is also an increased likelihood of above normal precipitation near and south of the Ohio River.

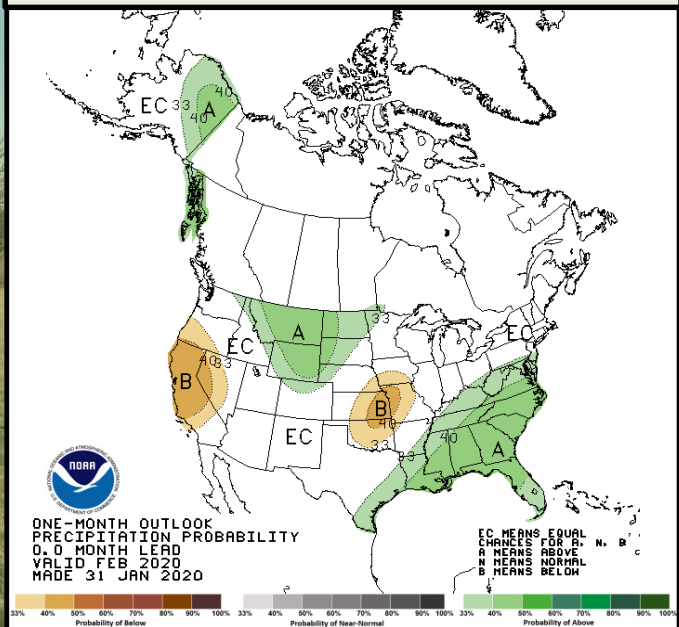
Site	Normal Avg Temp (°F)	Normal High (°F)	Normal Low (°F)
Cincinnati (CVG)	34.5	42.9	26.0
Columbus (CMH)	32.8	40.6	25.0
Dayton (DAY)	31.0	38.9	23.1

Site	Normal Precipitation (in.)	Normal Snowfall (in.)
Cincinnati (CVG)	2.81	6.5
Columbus (CMH)	2.25	6.1
Dayton (DAY)	2.24	5.9

Upcoming Temperature Outlook



Upcoming Precipitation Outlook

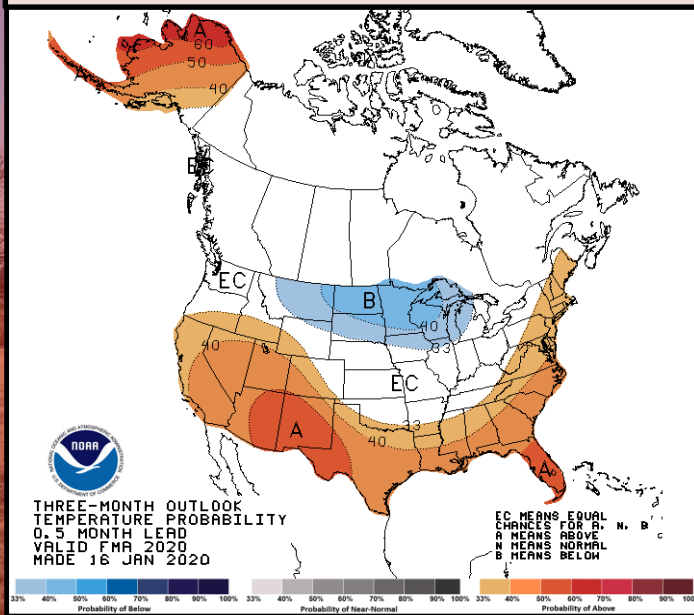


February-April Outlook

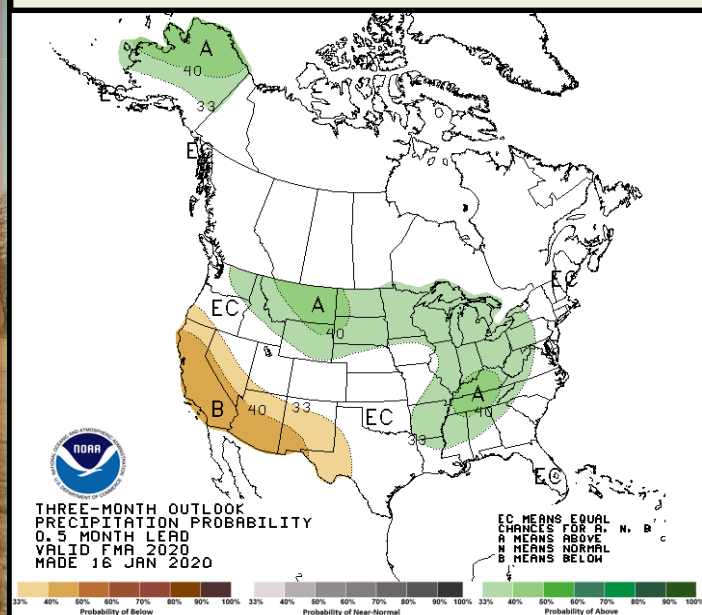
The three month outlook for the February, March, and April timeframe from the Climate Prediction Center calls for an increased likelihood of above normal precipitation. There is not as clear of a signal for temperatures with equal chances of below normal, normal, and above normal temperatures during this time.

ENSO-neutral conditions are expected to continue during this time. There is also a 50% chance of ENSO-neutral conditions continuing into the summer months as well.

Three-Month (FMA) Temp. Outlook



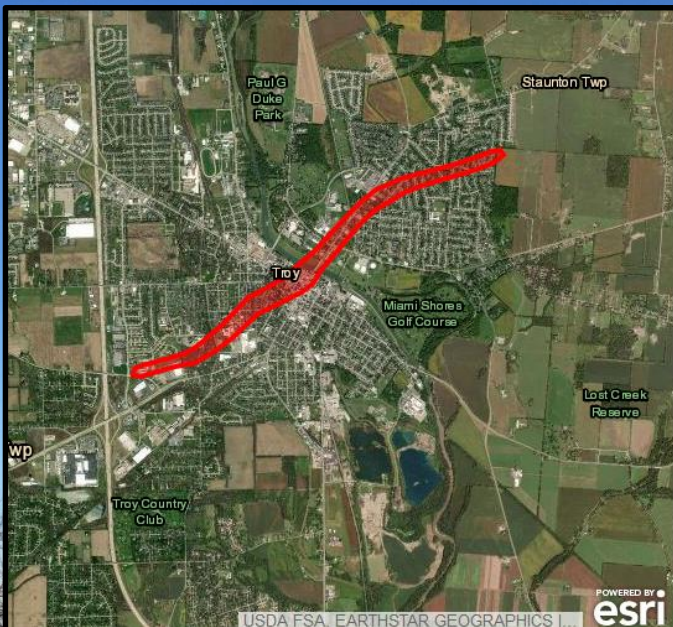
Three-Month (FMA) Precip. Outlook



Severe Weather

High winds occurred at various times on Saturday January 11th. In addition to the high winds, two tornadoes developed within a line of heavy showers in Miami County during the late evening. The EF0 tornadoes occurred in Troy and Fletcher Ohio.

Troy, Ohio EF0 Tornado



Fletcher, Ohio EF0 Tornado

