



# NWS Wilmington, Ohio July 2024 Regional Climate Summary

## Regional Climate Summary

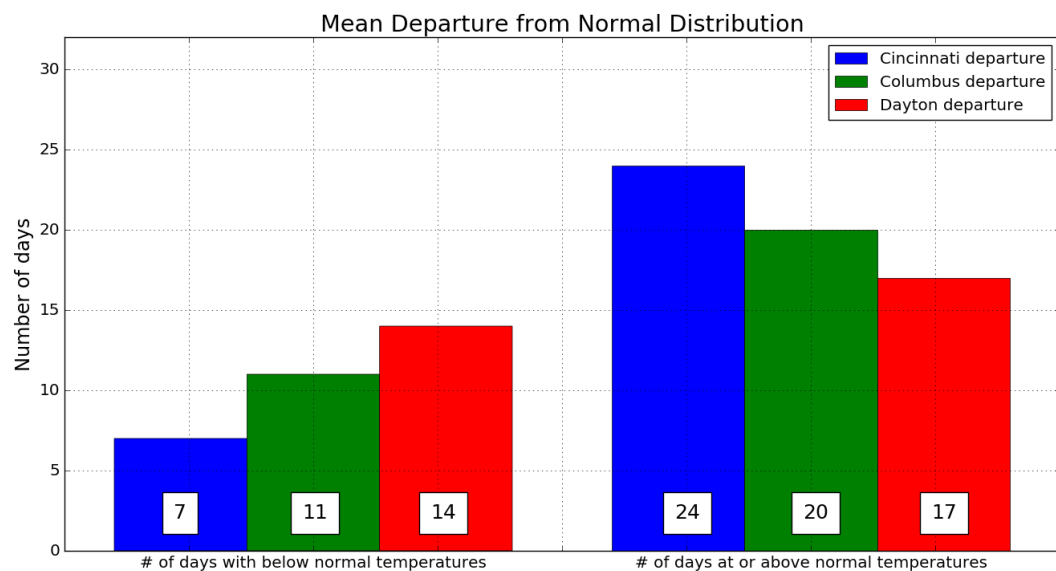
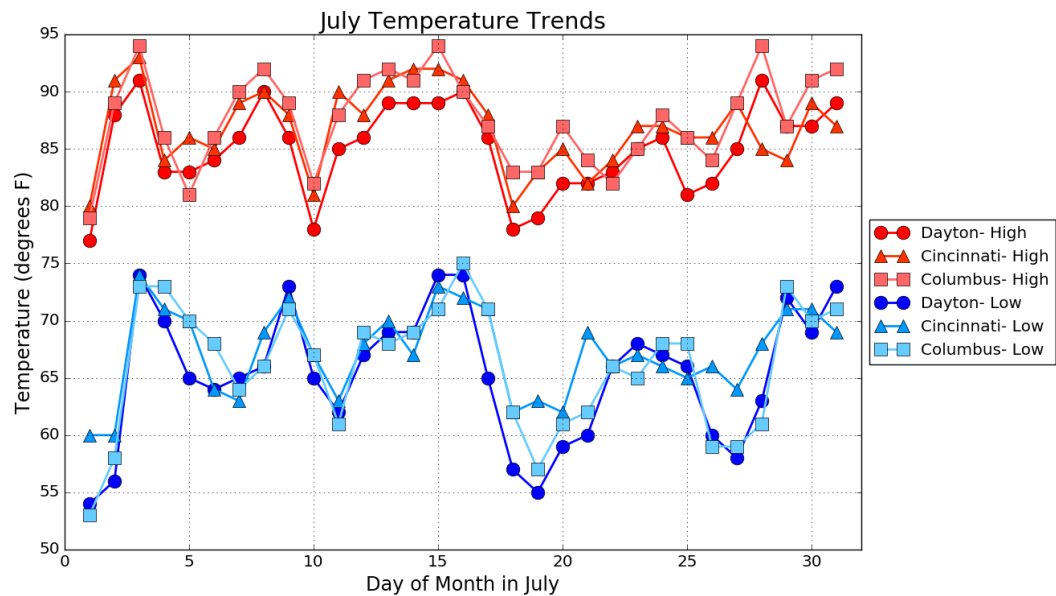
*A typical summertime pattern was in place for much of the month of July with temperatures overall pretty close to normal. In addition, precipitation was variable due to the convective nature of the rainfall patterns. This led to rainfall values ranging from below normal values to above normal values across the region. Severe weather did occur on multiple days during the month. No temperature or precipitation records were broken during the month.*

# Temperatures

*Temperatures for the month of July were overall near normal with just subtle fluctuations below and above normal. The month started out below normal before above normal temperatures moved in for the 3<sup>rd</sup>. A mixture of above normal and below normal temperatures were in place for the 5<sup>th</sup> to the 11<sup>th</sup> before several days of slightly above normal temperatures. A cool down on the 18<sup>th</sup> brought a return to below normal to near normal temperatures for about a week. The month finished off on a warmer note, but again just slightly above normal for temperatures. As expected, with temperatures so close to normal for the month there were no temperature records set during the month.*

Site	Avg Temp (°F)	Avg High Temp (°F)	Avg Low Temp (°F)	Departure From Normal (°F)	Maximum Temperature (°F)	Minimum Temperature (°F)
Cincinnati (CVG)	77.0	86.9	67.2	+1.1	93 on 3 <sup>rd</sup>	60 on 1 <sup>st</sup> and 2 <sup>nd</sup>
Columbus (CMH)	76.9	87.6	66.1	+1.5	94 on 15 <sup>th</sup> and 28 <sup>th</sup>	53 on 1 <sup>st</sup>
Dayton (DAY)	75.2	85.1	65.3	-0.8	91 on 3 <sup>rd</sup> and 28 <sup>th</sup>	54 on 1 <sup>st</sup>

# Temperatures (Continued)



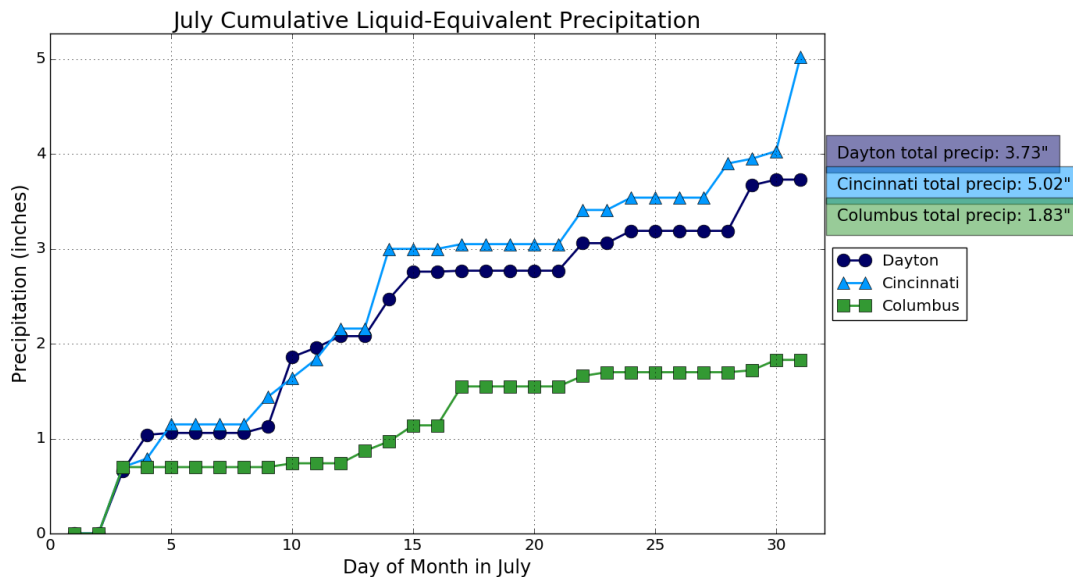


# Precipitation

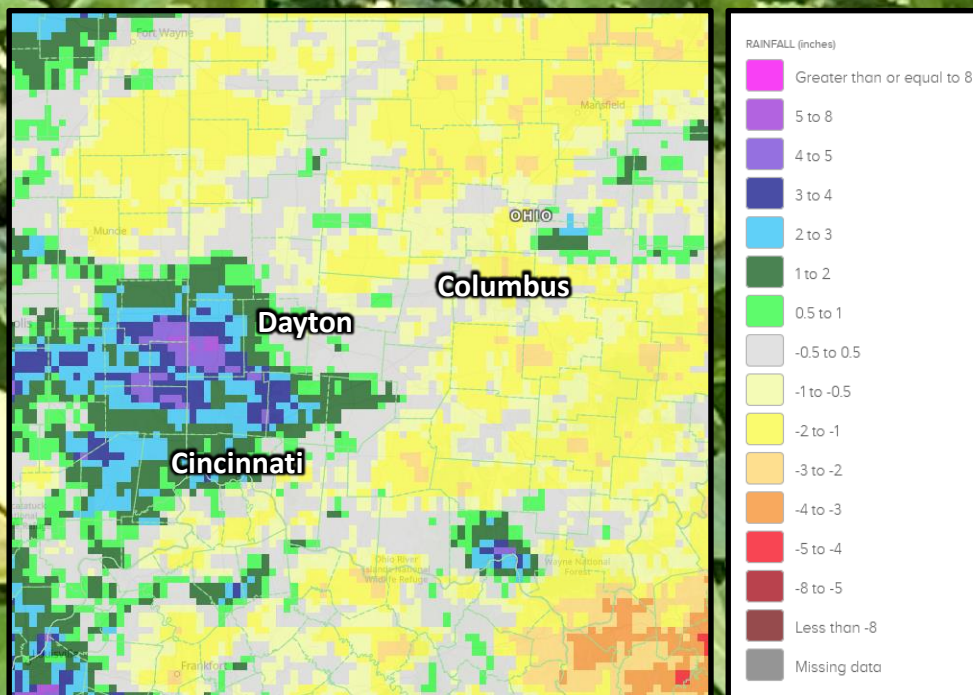
*Due to the convective nature of rainfall during the month, precipitation was highly variable across the region. This led to some areas above normal for rainfall values for the month while other locations finished up with below normal precipitation. No precipitation records occurred during the month. At the end of the month many locations across the region ranged from having abnormally dry conditions to severe drought which can be seen on page 6. Some locations that saw above normal rainfall for the month were not in drought conditions.*

Site	Total Precipitation (in.)	Departure From Normal (in.)	Max Daily Precipitation (in./date)		Total Snowfall (in.)
Cincinnati (CVG)	5.02	+1.19	0.99	31 <sup>st</sup>	0
Columbus (CMH)	1.83	-2.84	0.70	3 <sup>rd</sup>	0
Dayton (DAY)	3.73	-0.22	0.73	10 <sup>th</sup>	0

# Precipitation (Continued)



## July Precipitation Departure From Normal (In.)












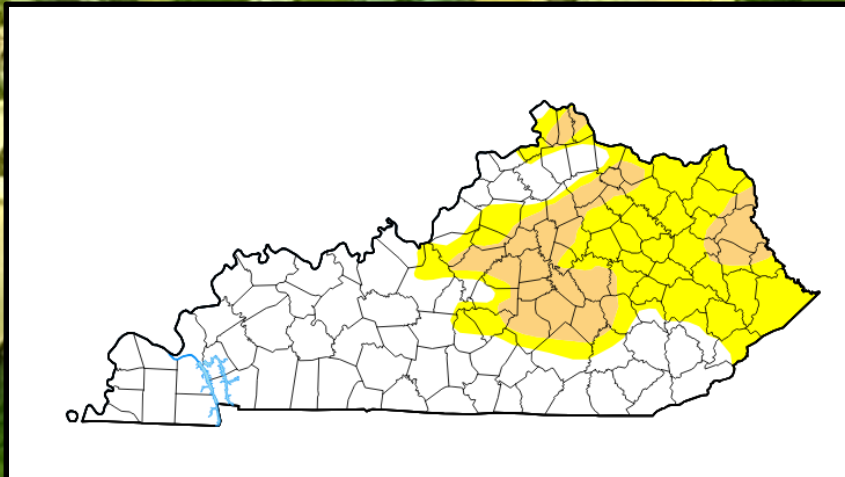
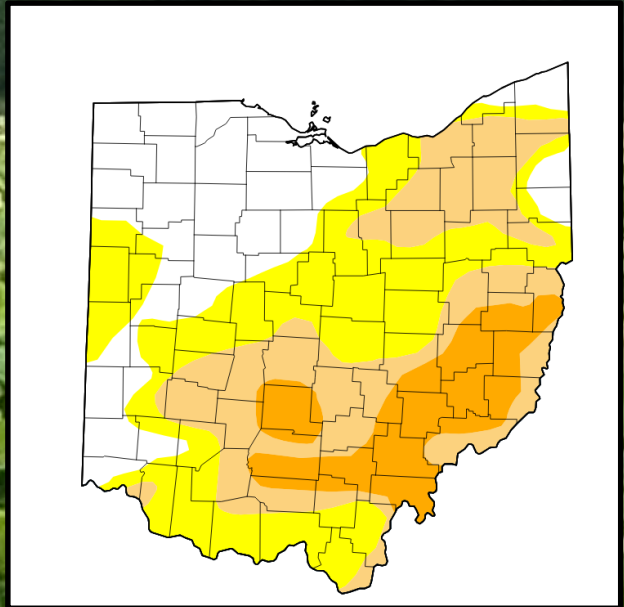
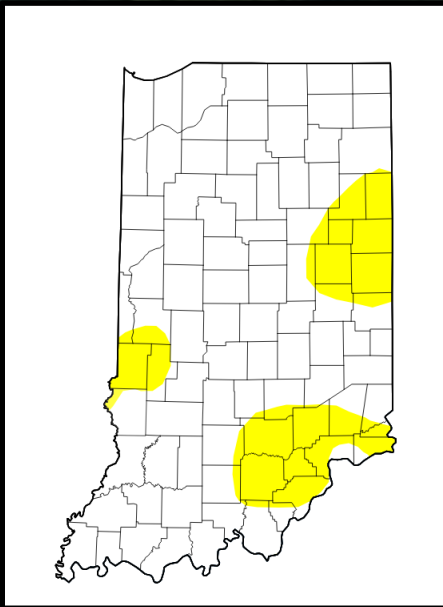
# U.S. Drought Monitor

Map released: Thurs. August 1, 2024

Data valid: July 30, 2024 at 8 a.m. EDT

## Intensity

-  None
-  D0 (Abnormally Dry)
-  D1 (Moderate Drought)
-  D2 (Severe Drought)
-  D3 (Extreme Drought)
-  D4 (Exceptional Drought)
-  No Data



# Severe Weather

*On July 4<sup>th</sup>, an EF0 tornado occurred 3 miles ESE of De Graff in Logan County, Ohio. Estimated maximum wind speeds were 65 mph and the path length was 0.17 mile. Some wind damage also occurred in central Ohio.*

*During the evening and night of July 9<sup>th</sup>, additional damaging wind reports occurred across portions of eastern Indiana and western Ohio.*

*Widespread damaging wind occurred on July 14<sup>th</sup> during the afternoon hours as storms moved through the region. Both wind and hail occurred on the 15<sup>th</sup>. Additional isolated wind damage occurred on the 17<sup>th</sup>.*

*The night of the 29<sup>th</sup> to the 30<sup>th</sup> damaging winds and 2 tornadoes occurred. An EF0 tornado occurred in Franklin County Indiana and an EF1 tornado traveled from Warren to Clinton County Ohio. Isolated damaging wind occurred at the end of the month on the 31<sup>st</sup>.*





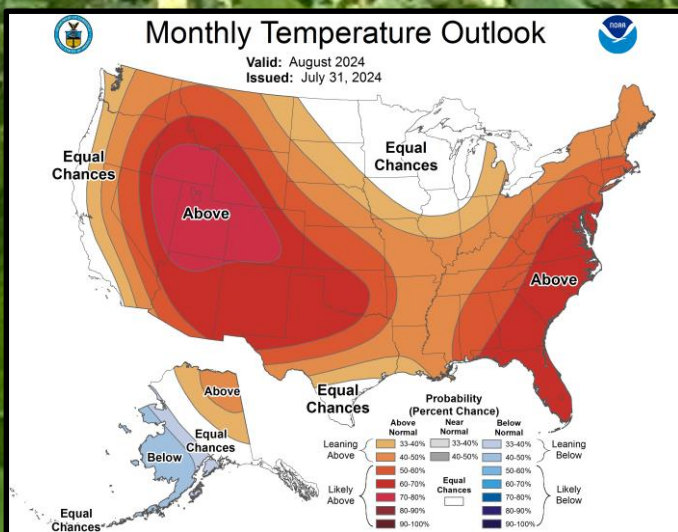
# August Outlook

*The latest outlook from the Climate Prediction Center calls for an increased likelihood of above normal temperatures. There are equal chances of below normal, normal, and above normal precipitation across most of the region.*

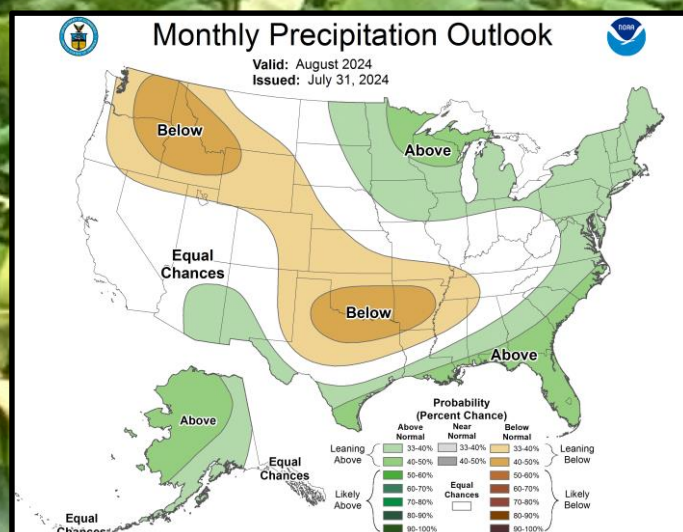
Site	Normal Avg Temp (°F)	Normal High (°F)	Normal Low (°F)
Cincinnati (CVG)	74.9	85.2	64.6
Columbus (CMH)	74.0	84.1	63.9
Dayton (DAY)	74.5	84.6	64.3

Site	Normal Precipitation (in.)	Normal Snowfall (in.)
Cincinnati (CVG)	3.43	0.0
Columbus (CMH)	3.73	0.0
Dayton (DAY)	2.96	0.0

## Upcoming Temperature Outlook



## Upcoming Precipitation Outlook



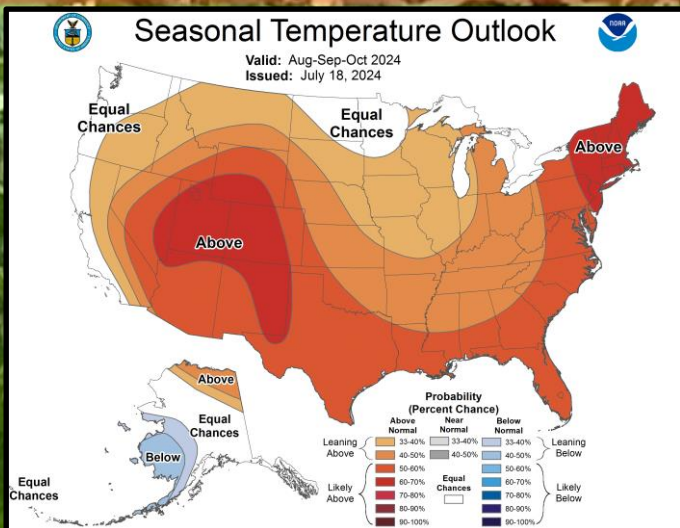


# August-October Outlook

*There is an increased likelihood of above normal temperatures for the August to October timeframe. There is not as clear of a signal for precipitation with equal chances of below normal, normal, and above normal precipitation.*

*A La Niña watch is in place. There is a 70% chance that ENSO-neutral conditions transition to La Niña during the August to October timeframe. There is a 79% chance of La Niña conditions continuing into the winter months.*

## Three-Month (ASO) Temp. Outlook



## Three-Month (ASO) Precip. Outlook

