

NWS Wilmington, Ohio May 2021 Regional Climate Summary

Regional Climate Summary

Large fluctuations in temperatures occurred during the month of May with low temperatures dropping into the 30s and high temperatures in the month reaching up into the 90s across some locations. Of particular note, even with the large temperature fluctuations, the month was quiet in terms of both severe weather and flooding.

Temperatures

The month of May started off with near normal temperatures for the first several days but a rainier/cloudier pattern developed by the end of the first full week, bringing an extended period of unseasonably chilly temperatures to the region. In fact, daily average temperatures were generally 8-10 degrees below seasonal norms from the 6th through the 13th with numerous days of light rain during this stretch as well.

Temperatures began to moderate toward the middle of the month and beyond as a much warmer airmass settled into the region by the 20th. This pattern shift allowed for temperatures to top out in the mid/upper 80s for nearly a week straight from the 20th through the 26th. During this period, there was little in the way of extensive cloud cover or widespread rain, which helped the early season warmth persist for 7 straight days.

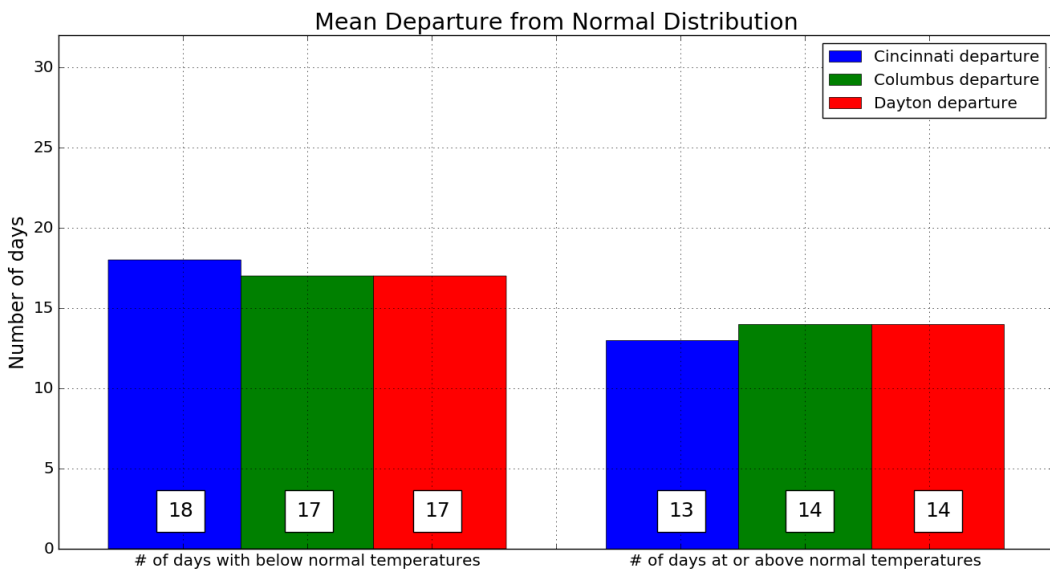
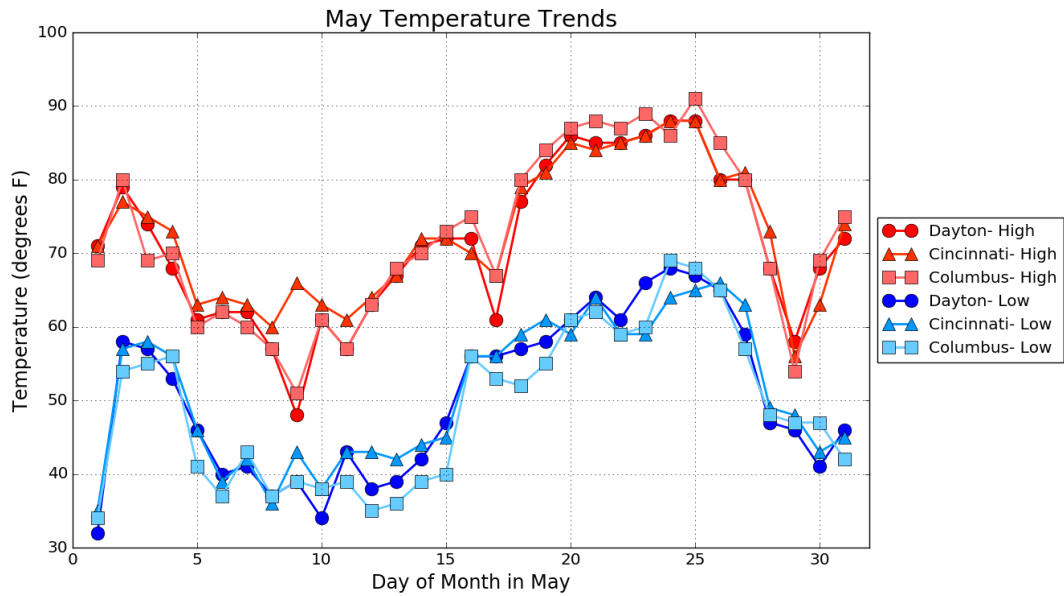
Temperatures started to trend cooler towards the end of the month. In fact, high temperatures only reached into the mid 50s on the 29th, only several degrees shy of standing daily records for coolest high temperature. Temperatures slowly moderated toward the final day of the month, but even so, daily average temperatures were still 5-8 degrees below seasonal norms.

Monthly average temperatures were several degrees below normal, as a whole, thanks in large part to the extended stretch of chilly conditions through the first half of the month.

Site	Avg Temp (°F)	Avg High Temp (°F)	Avg Low Temp (°F)	Departure From Normal (°F)	Maximum Temperature (°F)	Minimum Temperature (°F)
Cincinnati (CVG)	61.8°F	72.6°F	51.1°F	-2.3°F	88°F on 24 th and 25 th	35°F on 1 st
Columbus (CMH)	60.6°F	72.1°F	49.2°F	-2.7°F	91°F on 25 th	34°F on 1 st
Dayton (DAY)	60.9°F	71.3°F	50.5°F	-3.1°F	88°F on 24 th and 25 th	32°F on 1 st



Temperatures (Continued)



Precipitation

The month of May started a bit on a wet note, especially for the first 9 days or so as several systems brought rainfall to the region during this time period. Some locales received measurable rainfall for 7 or 8 consecutive days during this stretch, which allowed for rises on area waterways and some minor, more isolated, flooding. Most spots received 2-3" during the first 1/3 of the month before a much drier pattern evolved until another system moved through on the 17th.

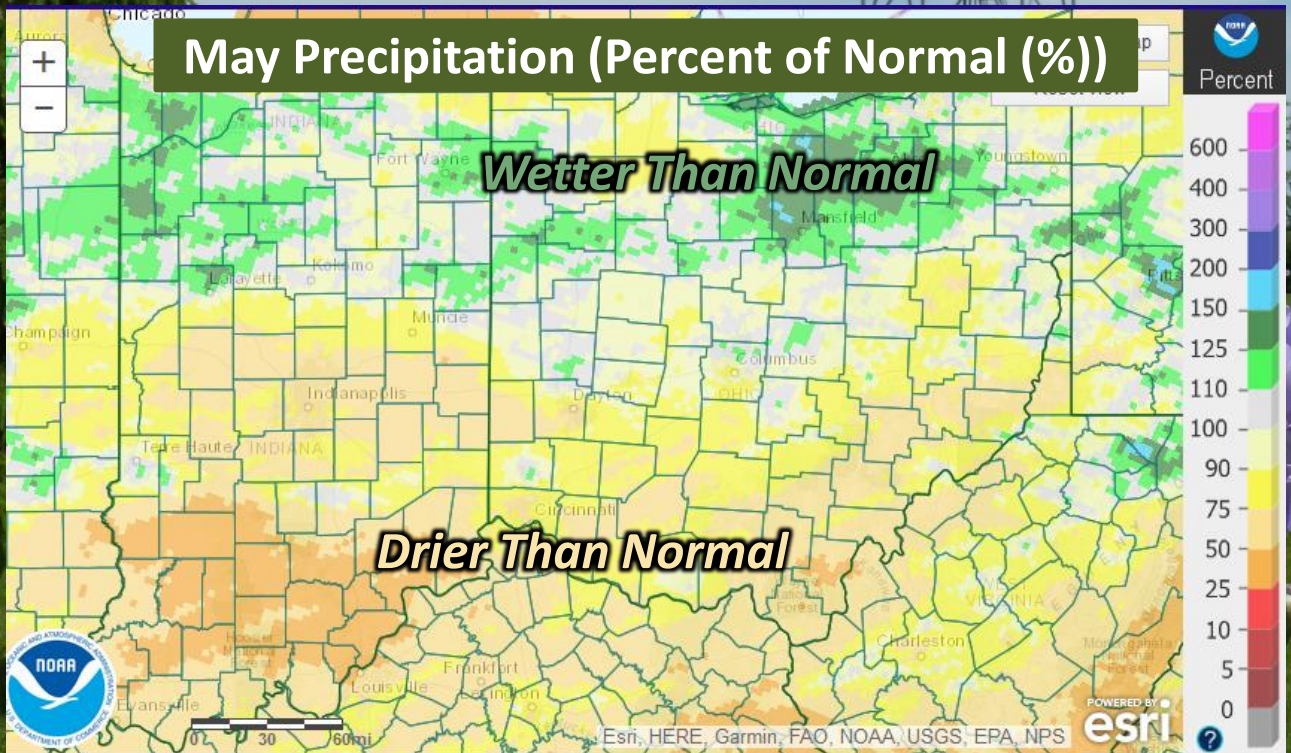
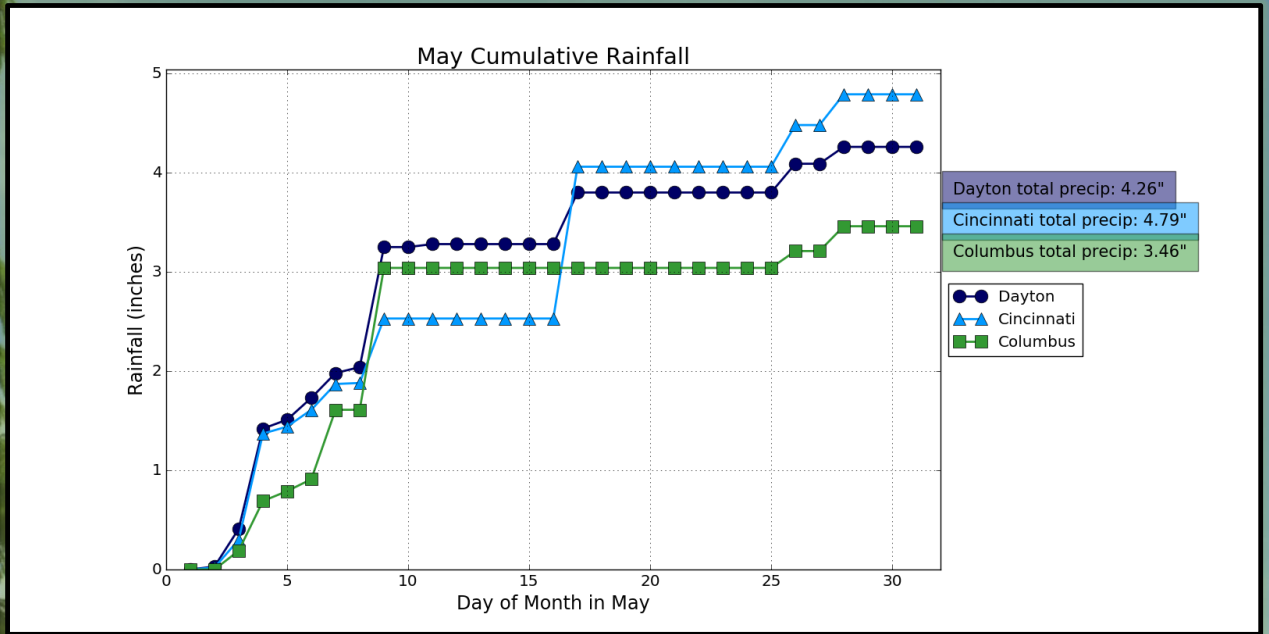
Moderate to locally heavy rain again impacted parts of the region on the 17th, particularly near/south of the Ohio River where a narrow strip of 2-3" of rain occurred from Ripley Co Indiana to Adams Co OH, including much of northern north-central Kentucky. Due to the antecedent dry conditions, flooding was isolated and minor in nature. The rain moved out by the evening and yielded to another extended stretch of generally dry weather.

Multiple days of precipitation occurred during the final week of the month including on the 26th and the 28th. However, there once again was not much in the way of thunderstorm activity, which limited the instances of locally heavy rainfall. This allowed many spots to finish the month very close to normal rainfall or perhaps slightly drier than normal.

Site	Total Precipitation (in.)	Departure From Normal (in.)	Max Daily Precipitation (in./date)	Total Snowfall (in.)	Max Daily Snowfall (in./date)
Cincinnati (CVG)	4.79"	+ 0.12"	1.53" 05/17	0.0 in.	-- --
Columbus (CMH)	3.46"	- 0.53"	1.43" 05/09	0.0 in.	-- --
Dayton (DAY)	4.26"	- 0.25"	1.21" 05/09	0.0 in.	-- --



Precipitation (Continued)



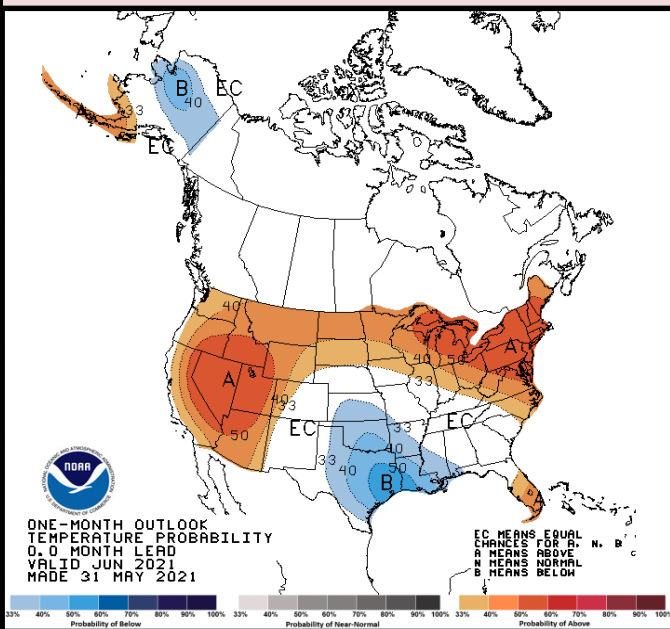
June Outlook

The latest outlook from the Climate Prediction Center (CPC) indicates favorable probability for above normal temperatures, especially in the northern Ohio Valley, and above normal precipitation, especially in the southern Ohio Valley.

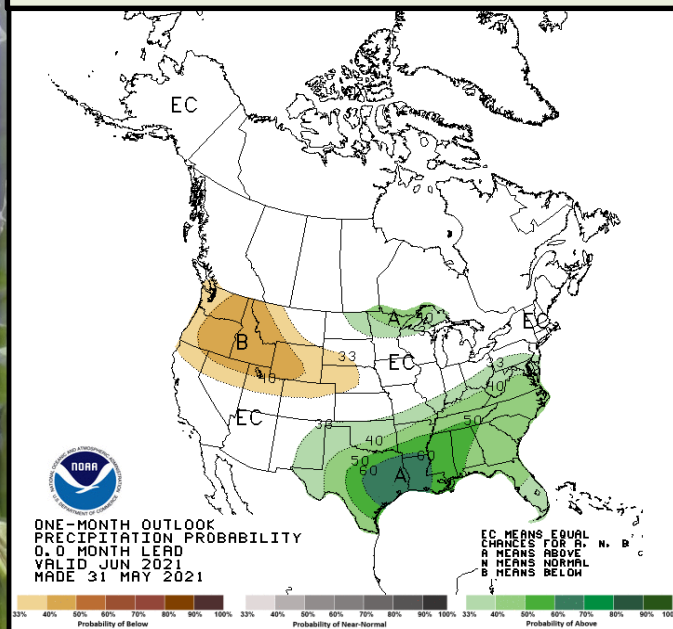
Site	Normal Avg Temp (°F)	Normal High (°F)	Normal Low (°F)
Cincinnati (CVG)	72.3°F	82.6°F	62.1°F
Columbus (CMH)	71.9°F	82.2°F	61.6°F
Dayton (DAY)	72.7°F	82.6°F	62.7°F

Site	Normal Precipitation (in.)	Normal Snowfall (in.)
Cincinnati (CVG)	4.75"	--
Columbus (CMH)	4.33"	--
Dayton (DAY)	4.14"	--

Upcoming Temperature Outlook



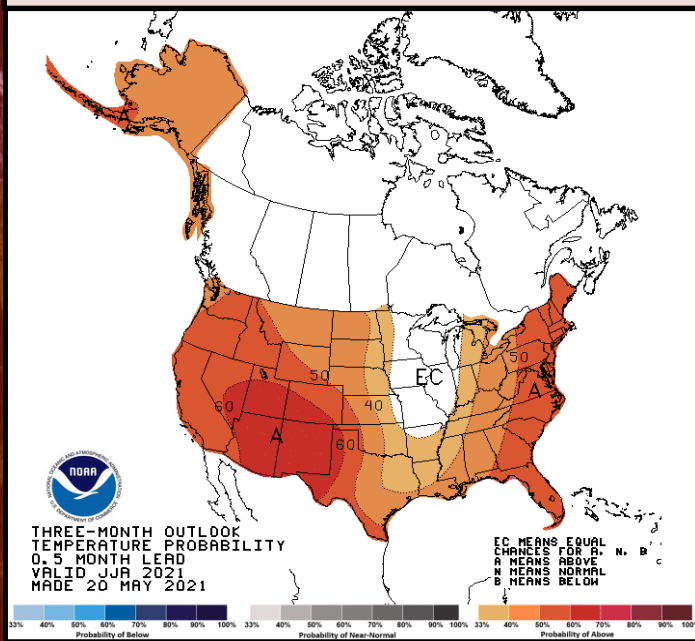
Upcoming Precipitation Outlook



Summer Outlook

An increased likelihood of above normal temperatures and above normal precipitation is expected for the summer months. La Niña has ended, with ENSO-neutral conditions likely to continue through the summer.

Three-Month (JJA) Temp. Outlook



Three-Month (JJA) Precip. Outlook

