



NWS Wilmington, Ohio November 2023 Regional Climate Summary

Regional Climate Summary

November 2023 was overall a pretty quiet weather month with no significant severe or winter weather. While warmer weather dominated much of the first few weeks of the month, cooler air moved in for the later parts of the month.

Temperatures

While the month started out cool with well below normal temperatures, this quickly changed with nearly 3 weeks where most days had above normal values.

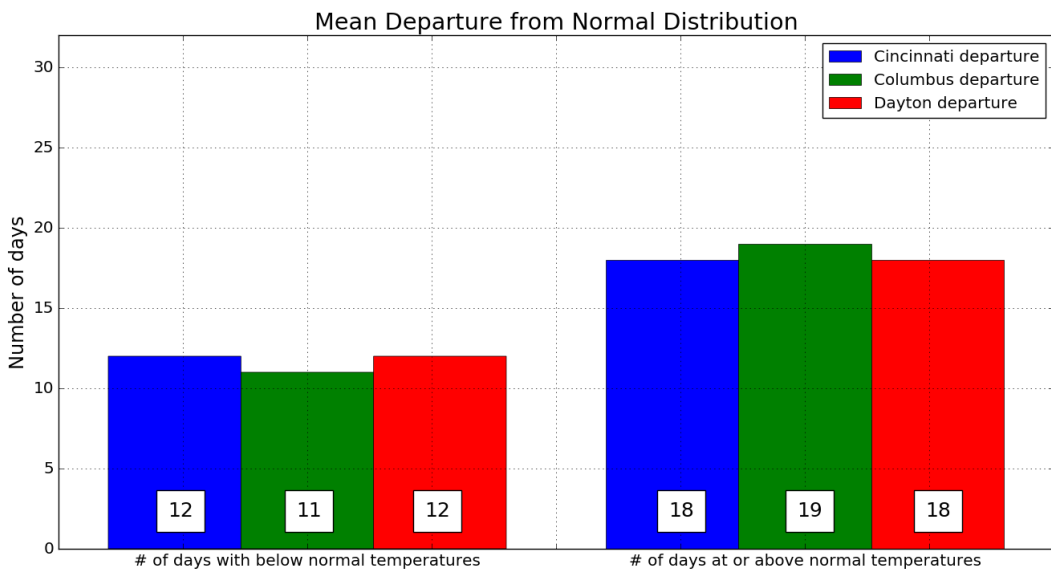
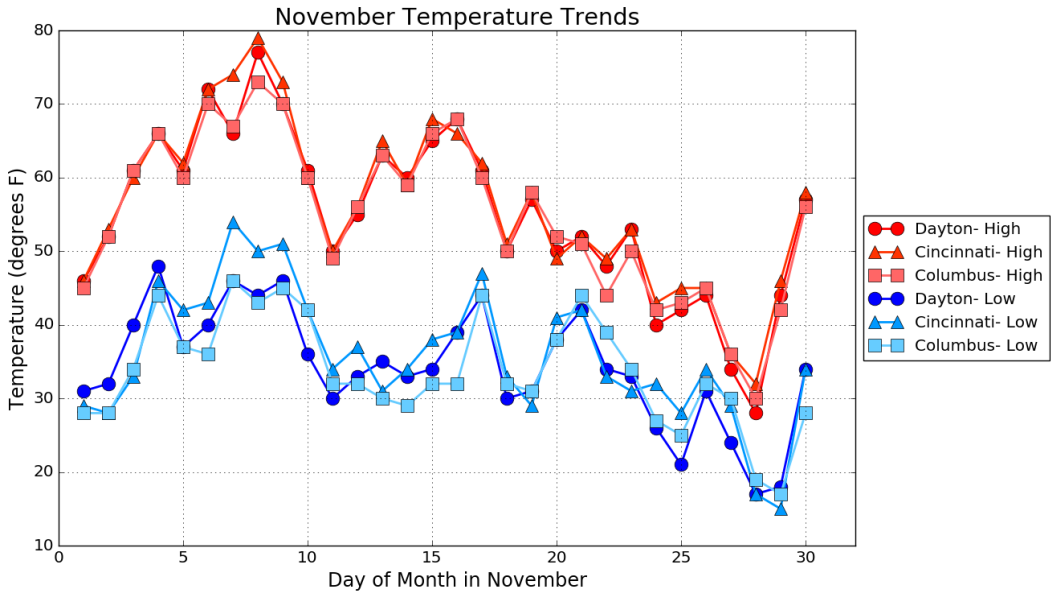
A record high temperatures was tied at the Cincinnati Northern Kentucky International Airport on November 8th. The high temperature of 79 degrees tied the old record set in 2020. With temperatures above normal for a significant portion of the month snowfall accumulation was limited.

The 22nd and 23rd were a transition with near normal temperatures before a much colder air mass settled in to the region for the 24th through the 29th. Low temperatures dropped down into the teens on the 28th with winds making it feel even colder. Another night of teens occurred on the 29th as well before temperatures started to moderate some at the end of the month.

Site	Avg Temp (°F)	Avg High Temp (°F)	Avg Low Temp (°F)	Departure From Normal (°F)	Maximum Temperature (°F)	Minimum Temperature (°F)
Cincinnati (CVG)	46.1	56.3	35.9	+1.7	79 on 8th	15 on 29 th
Columbus (CMH)	44.2	54.8	33.7	+0.6	73 on 8th	17 on 29 th
Dayton (DAY)	44.7	55.1	34.2	+0.6	77 on 8th	17 on 28 th



Temperatures (Continued)



Precipitation

While pretty widespread precipitation occurred on the 9th, most of the first half of the month was dry across the region. This finally changed around the middle of the month when some locations received over a half inch to near an inch of rain, mainly on the 17th. Additional rain moved in for the 20th and 21st, tapering to just some drizzle on the morning of the 22nd.

Dry conditions after the 22nd gave way to rainfall on the 26th that started to transition to snow flurries as colder air moved in. Off and on snow flurries remained through the 28th.

Showers just started to move into the region at the end of the day on the 30th, however most of the region finished the month with below normal precipitation.

Site	Total Precipitation (in.)	Departure From Normal (in.)	Max Daily Precipitation (in./date)		Total Snowfall (in.)	Max Daily Snowfall (in./date)	
Cincinnati (CVG)	1.39	-1.84	0.77	21 st	0	0	N/A
Columbus (CMH)	1.89	-0.90	0.93	21 st	T	T	27 th
Dayton (DAY)	1.56	-1.51	0.76	17 th	T	T	26 th and 28 th



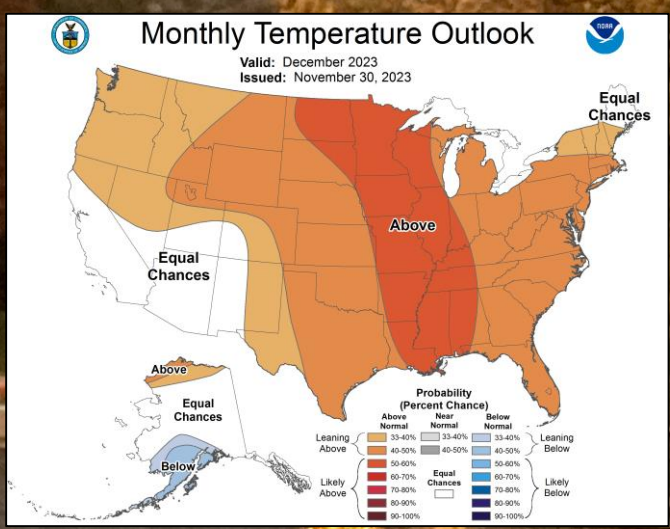
December Outlook

The latest outlook from the Climate Prediction Center calls for an increased likelihood of above normal temperatures. There is not a clear signal for precipitation with equal chances of below, normal, or above.

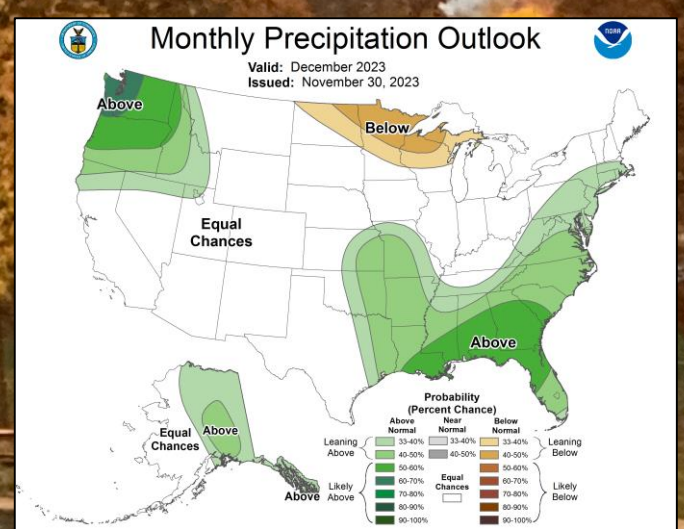
Site	Normal Avg Temp (°F)	Normal High (°F)	Normal Low (°F)
Cincinnati (CVG)	35.6	43.3	27.9
Columbus (CMH)	34.5	41.5	27.4
Dayton (DAY)	34.3	41.5	27.1

Site	Normal Precipitation (in.)	Normal Snowfall (in.)
Cincinnati (CVG)	3.73	4.1
Columbus (CMH)	3.13	5.1
Dayton (DAY)	3.05	4.8

Upcoming Temperature Outlook



Upcoming Precipitation Outlook

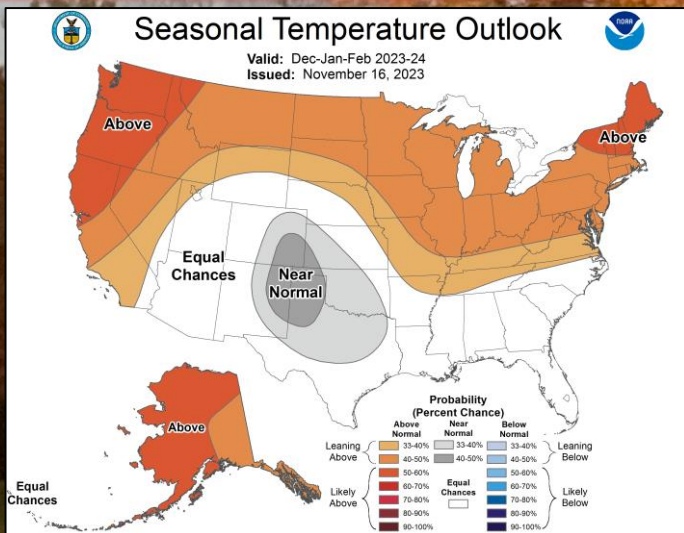


December-February Outlook

El Niño is expected to continue through the winter months with an El Niño advisory still in effect. There is also a 62% chance of El Niño continuing into the April-June timeframe of 2024.

As is typical with El Niño winters, the Climate Prediction Center expects an increased likelihood of above normal temperatures and below normal precipitation.

Three-Month (DJF) Temp. Outlook



Three-Month (DJF) Precip. Outlook

