



# NWS Wilmington, Ohio October 2017 Regional Climate Summary

## Regional Climate Summary

*October started off warm with heavy rain from the remnants of once-Hurricane Nate. By the end of the month a strong cold front moved through bringing much cooler temperatures to the region. Some locations also observed the first snowfall of the season by the end of the month.*

# Temperatures

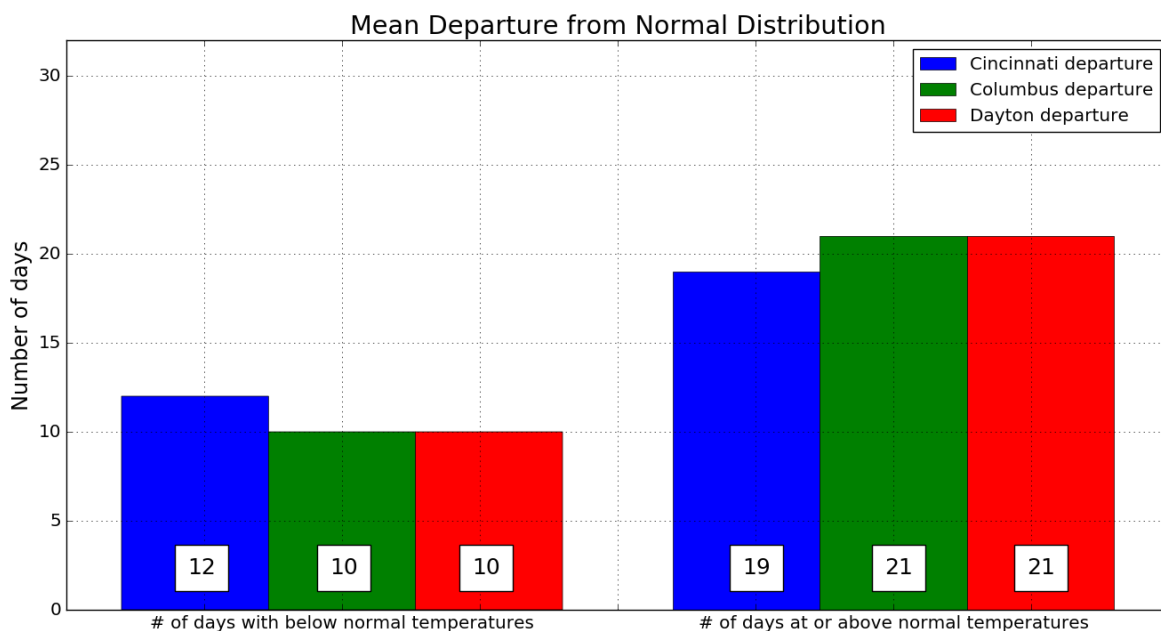
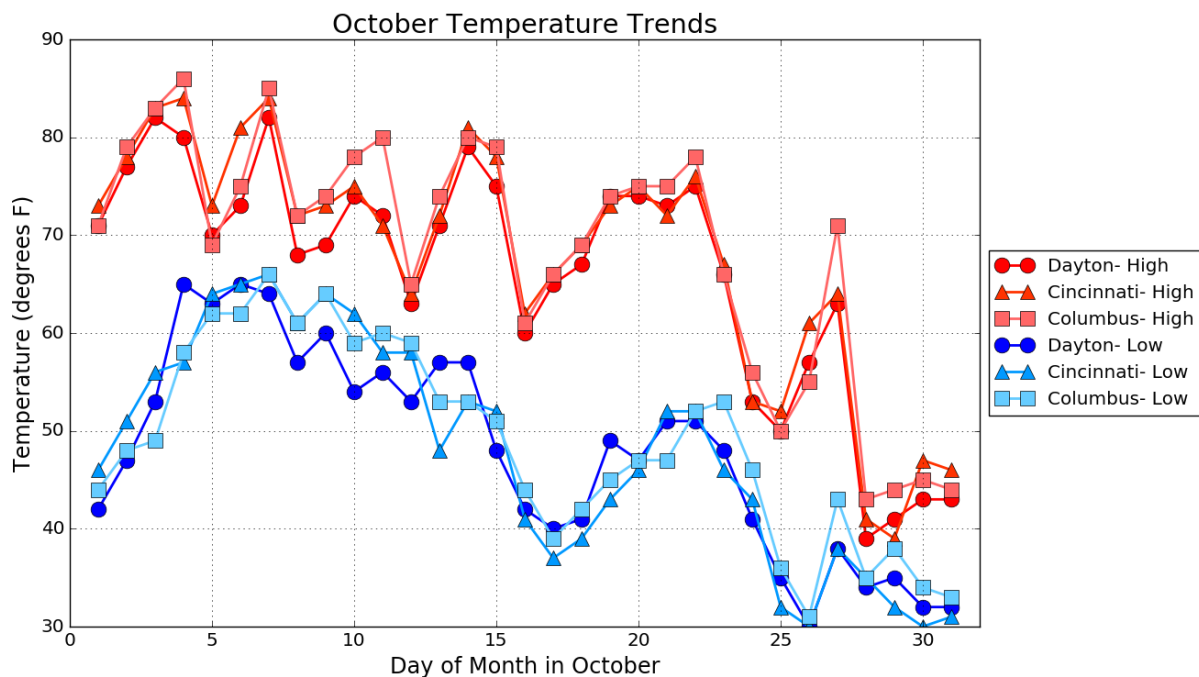
*October picked up just where September left off – with an unusually warm weather pattern that was more typical of late August than early October. Even though a front moved through on the 7<sup>th</sup> and the remnants of once-Hurricane Nate tracked through the region bringing some beneficial rainfall, the weather pattern never strayed too far from its warm start through the middle of the month. Many locations in the area had high temperatures reach into the upper 70s and lower to middle 80s numerous times through the first half of the month. By the 15<sup>th</sup>, however, a strong cold front tracked through the area, bringing a brief respite from the persistent above normal temperatures for the next few days.*

*Temperatures soon began to warm again and high temperatures in the 70s were again prevalent by the 19<sup>th</sup>. This warm stretch lasted through the 22<sup>nd</sup> of the month. Temperatures closer to normal were observed on the 23<sup>rd</sup>, however a cold front on the 23<sup>rd</sup> brought a change to below normal temperatures. Temperatures briefly returned to normal or slightly above normal on the 27<sup>th</sup> in advance of a cold front. Temperatures dropped quickly on the evening of the 27<sup>th</sup> and through the overnight hours on the 28<sup>th</sup>. Cincinnati and Dayton both tied their record low max temperatures on the 28<sup>th</sup>. Below normal temperatures remained in place for the remainder of the month.*

Site	Avg Temp (°F)	Avg High Temp (°F)	Avg Low Temp (°F)	Departure From Normal (°F)	Maximum Temperature (°F)	Minimum Temperature (°F)
Cincinnati (CVG)	58.0°F	67.9°F	48.0°F	+2.1°F	84°F (4 <sup>th</sup> , 7 <sup>th</sup> )	30 °F (26 <sup>th</sup> , 30 <sup>th</sup> )
Columbus (CMH)	58.7°F	68.5°F	48.8°F	+3.6°F	86°F (4 <sup>th</sup> )	31°F (26 <sup>th</sup> )
Dayton (DAY)	57.0°F	66.1°F	48.0°F	+3.1°F	82°F (3 <sup>rd</sup> , 7 <sup>th</sup> )	30°F (26 <sup>th</sup> )



# Temperatures (Continued)



# Precipitation

*While dry conditions prevailed for the first several days of the month, a cold front moved through the Ohio Valley on the 7<sup>th</sup>, quickly followed by the remnants of once-Hurricane Nate. Tropical moisture streamed into the Ohio Valley during this 2-day span, resulting in numerous reports of 1-2" of rain, with some isolated totals in excess of 3" across portions of northeastern Kentucky. This wet 2-day period was followed by several days of spotty shower activity before dry conditions eventually returned on the 12<sup>th</sup>. Another cold front moved through the Ohio Valley on the 15<sup>th</sup>, but shower coverage was spotty at best. The front did not provide much in the way of appreciable widespread rainfall.*

*After the cold front passage on the 15<sup>th</sup>, another extended dry stretch evolved for the next week. The dry weather came to an end on the 23<sup>rd</sup> as an area of low pressure and associated moisture moved across the region. Some ice pellets were noted on the 24<sup>th</sup> with cold air aloft.*

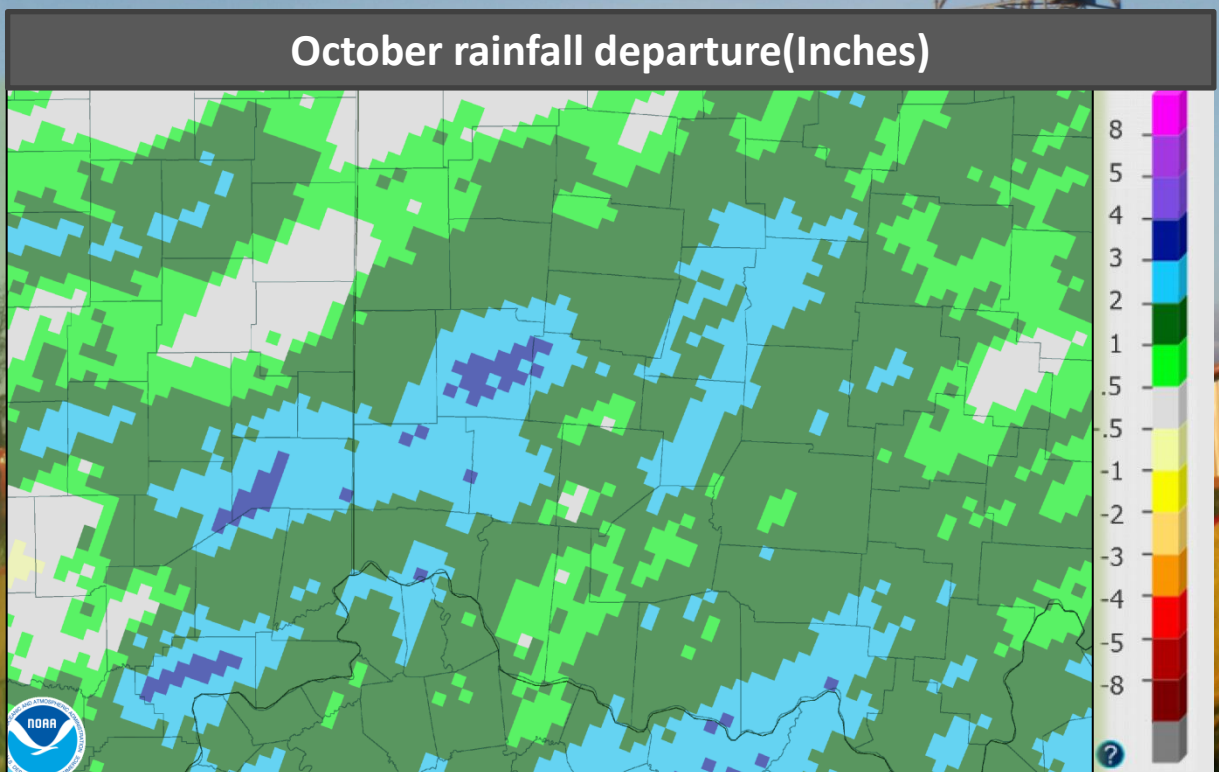
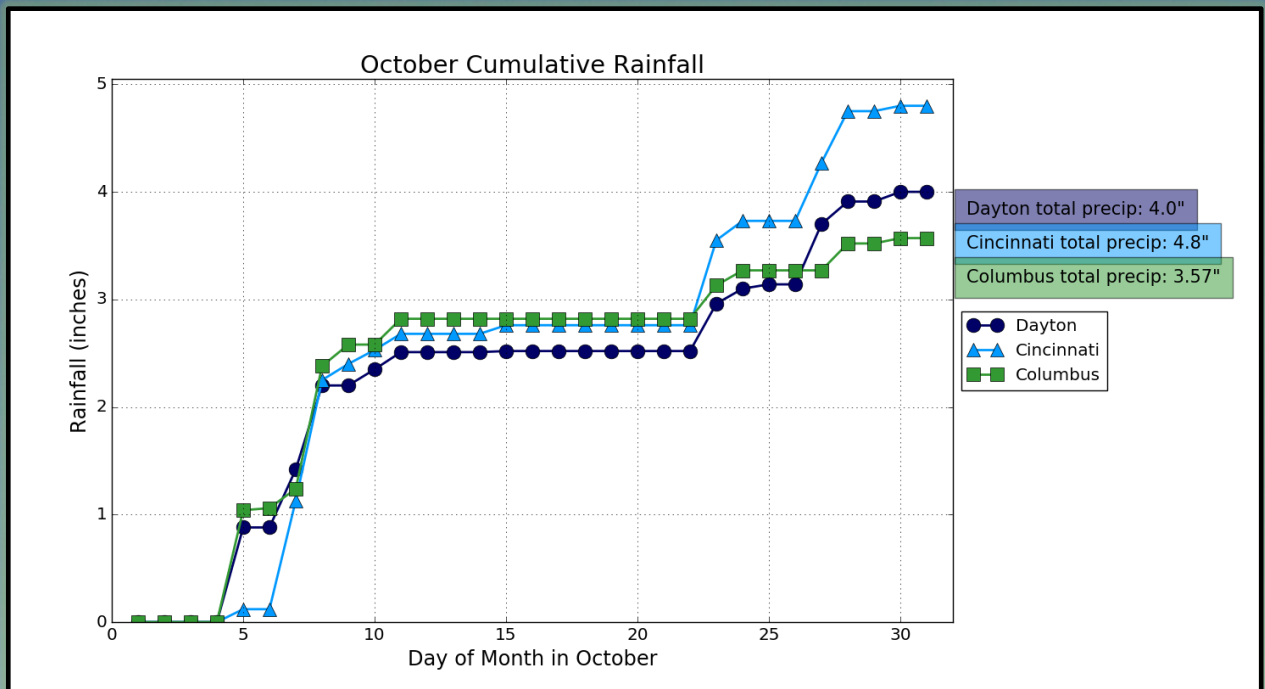
*A cold front moved through on the evening of the 27<sup>th</sup> and as colder air moved in some sleet and snow began to mix in with the rain. More widespread light snow and sleet occurred on the morning of the 28<sup>th</sup> with many locations, including the NWS office in Wilmington, Ohio, seeing their first snow of the season! A cold rain was present across most of the region on the 30<sup>th</sup>. Dry conditions finished off the month on the 31<sup>st</sup>.*

Site	Total Precipitation (in.)	Departure From Normal (in.)	Max Daily Precipitation (in./date)		Total Snowfall (in.)	Max Daily Snowfall (in./date)	
Cincinnati (CVG)	4.80"	+1.50"	1.12"	8th	T	T	28th
Columbus (CMH)	3.57"	+0.96"	1.14"	8th	T	T	28th
Dayton (DAY)	4.00"	+1.07"	0.88"	5th	T	T	28th





# Precipitation (Continued)



# 1<sup>st</sup> Snow of the Season at NWS Wilmington, Ohio October 28th





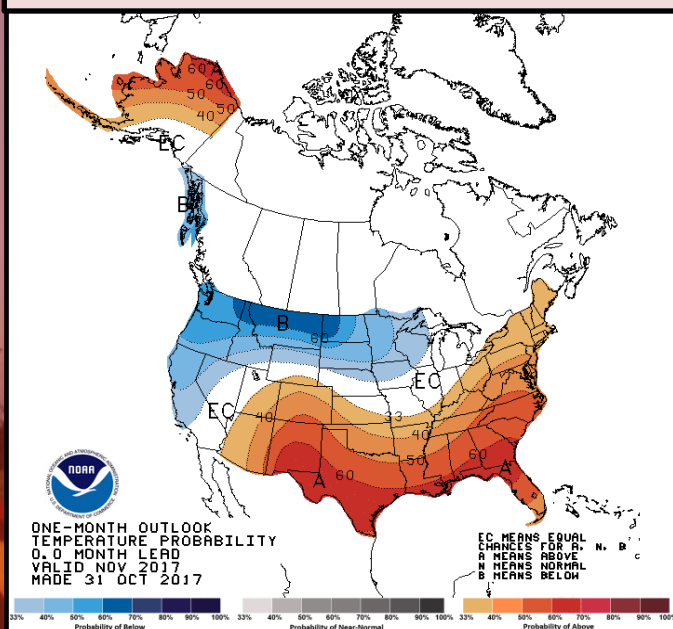
# November Outlook

*The latest outlook from the Climate Prediction Center (CPC) calls for an increased likelihood of above normal temperatures and an increased likelihood of wetter than normal conditions.*

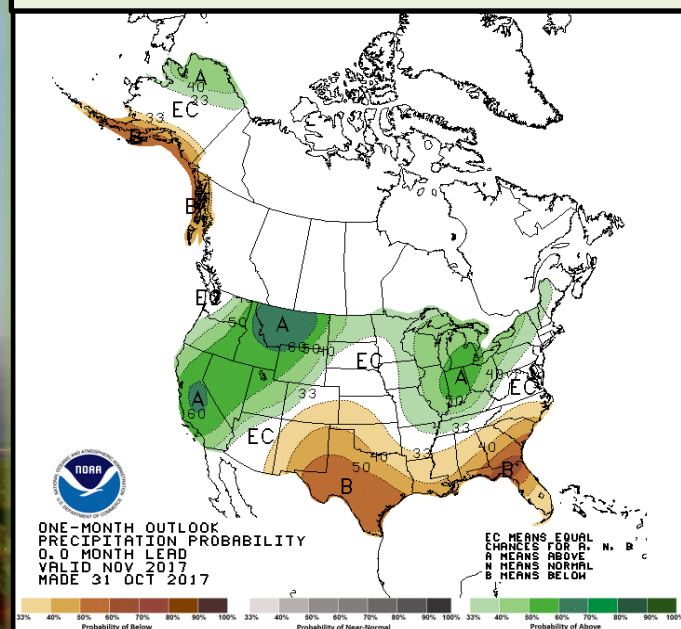
Site	Normal Avg Temp (°F)	Normal High (°F)	Normal Low (°F)
Cincinnati (CVG)	45.1°F	54.0°F	36.2 °F
Columbus (CMH)	44.4 °F	52.6°F	36.1°F
Dayton (DAY)	42.8°F	51.1 °F	34.6 °F

Site	Normal Precipitation (in.)	Normal Snowfall (in.)
Cincinnati (CVG)	3.43 "	0.4"
Columbus (CMH)	3.20 "	0.9 "
Dayton (DAY)	3.39 "	0.6"

## Upcoming Temperature Outlook



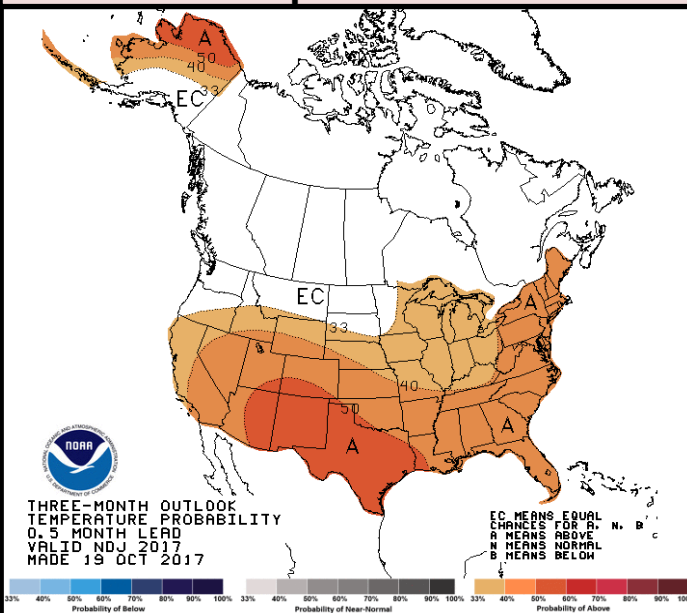
## Upcoming Precipitation Outlook



# Late Autumn / Early Winter Outlook

A La Niña watch is in effect with La Niña conditions favored to develop during the fall and into the winter months. It is expected to be a weak La Niña event. For the November, December, and January three month outlook there is an increased likelihood of above normal temperatures. There is not as clear of a signal for precipitation with equal chances of below normal, normal, and above normal precipitation.

## Three-Month (NDJ) Temp. Outlook



## Three-Month (NDJ) Precip. Outlook

