



NWS Wilmington, Ohio October 2018 Regional Climate Summary

Regional Climate Summary

October of 2018 will largely be remembered for the record warmth to start, followed by a sharp change in the weather pattern which yielded below normal temperatures through most of the rest of the month. Strong winds also occurred during the month. A vigorous system on the 20th brought widespread strong wind gusts to the region causing trees to be knocked down and power outages. Additional strong winds occurred with a system that moved through on the 28th.

Temperatures

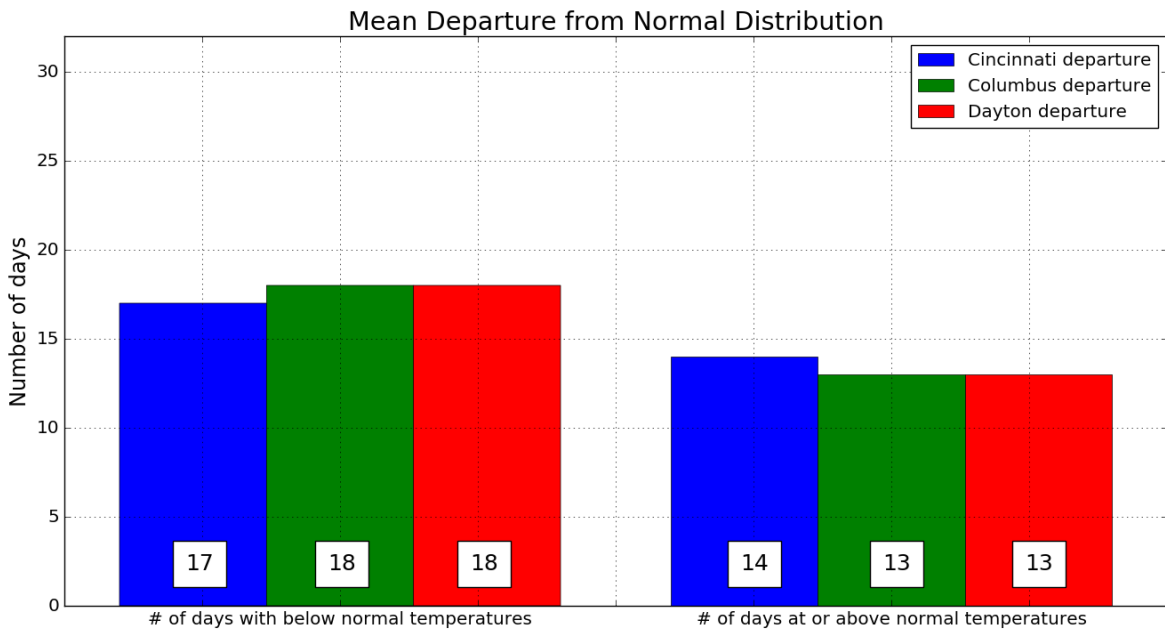
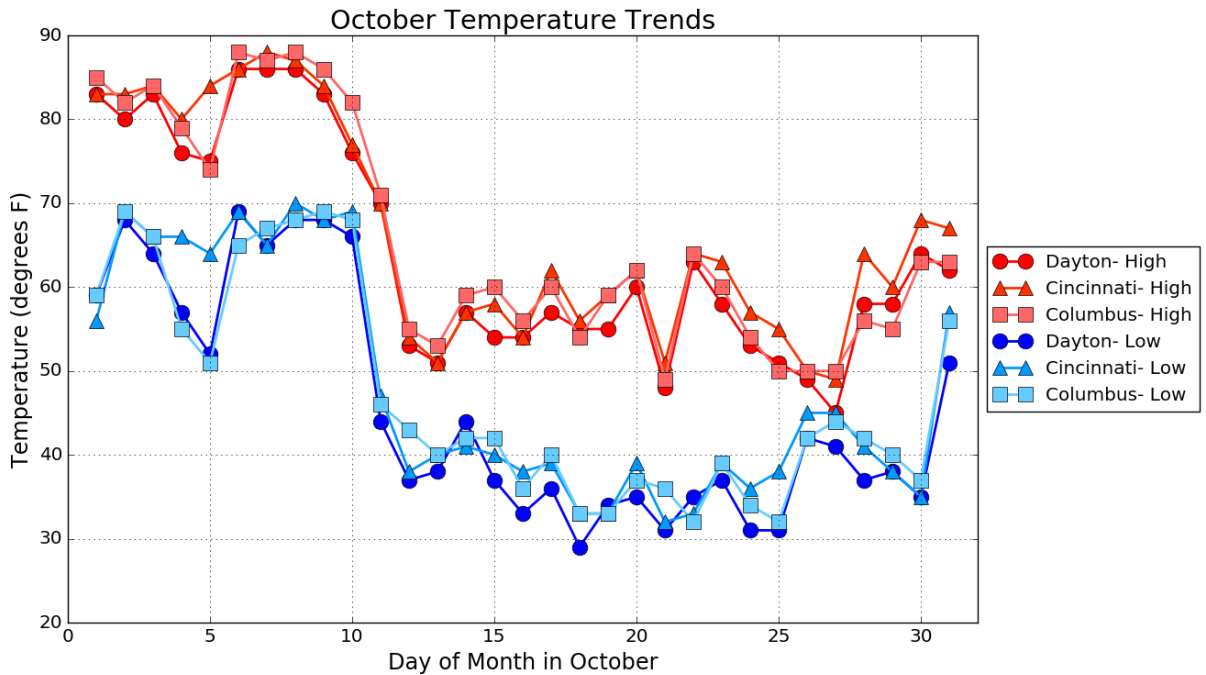
A summertime temperature pattern started the month with well above normal temperatures in the 80s. These temperatures lasted through the first week and into the 2nd week of October. A shift to much cooler air occurred from the 10th to the 11th with the passage of a strong cold front. Nevertheless, the warmth to start the month was remarkable across much of the region. In fact, in terms of daily average temperature, it was the warmest first 10 days of October on record at each of the 3 local climate sites. Dayton's average daily temperature of 72.5°F surpassed the previous warmest start to October by nearly 3°! Moreover, the 5 separate days with highs of at least 85°F at Columbus is tied (2007) for the most such occurrences in the month of October on record for the site. The temperature reached to 88°F at both Cincinnati and Columbus, the highest temperature in the month of October at each site since 2007. Multiple record high minimum temperatures were tied or broken.

The record stretch of warmth did come to an end by the 11th as a much cooler airmass settled into the region. In fact, temperatures went from well above normal to well below normal. These cooler and below normal temperatures were long lasting as below normal temperatures continued for the next two weeks. Temperatures finally steadied out to near normal towards the end of the month and then well above normal for the last day of the month.

Site	Avg Temp (°F)	Avg High Temp (°F)	Avg Low Temp (°F)	Departure From Normal (°F)	Maximum Temperature (°F)	Minimum Temperature (°F)
Cincinnati (CVG)	57.4	66.7	48.0	+1.5	88 (10/7)	32 (10/21)
Columbus (CMH)	56.5	65.7	47.2	+1.5	88 (Mult.)	32 (Mult.)
Dayton (DAY)	54.9	64.2	45.6	+1.0	86 (Mult.)	29 (10/18)



Temperatures (Continued)



Precipitation

With the summertime pattern for the first week of the month, thunderstorms developed during the daytime hours on several of the days, yielding a typical uneven rainfall footprint through the first 10 days or so of the month. However, a sharp cold front moving through the area on the 10th into the 11th did bring the first widespread rain event to the area in the month, but even this resulted in only light amounts (generally a quarter of an inch or less). Some locations received their first winter precipitation on the 12th.

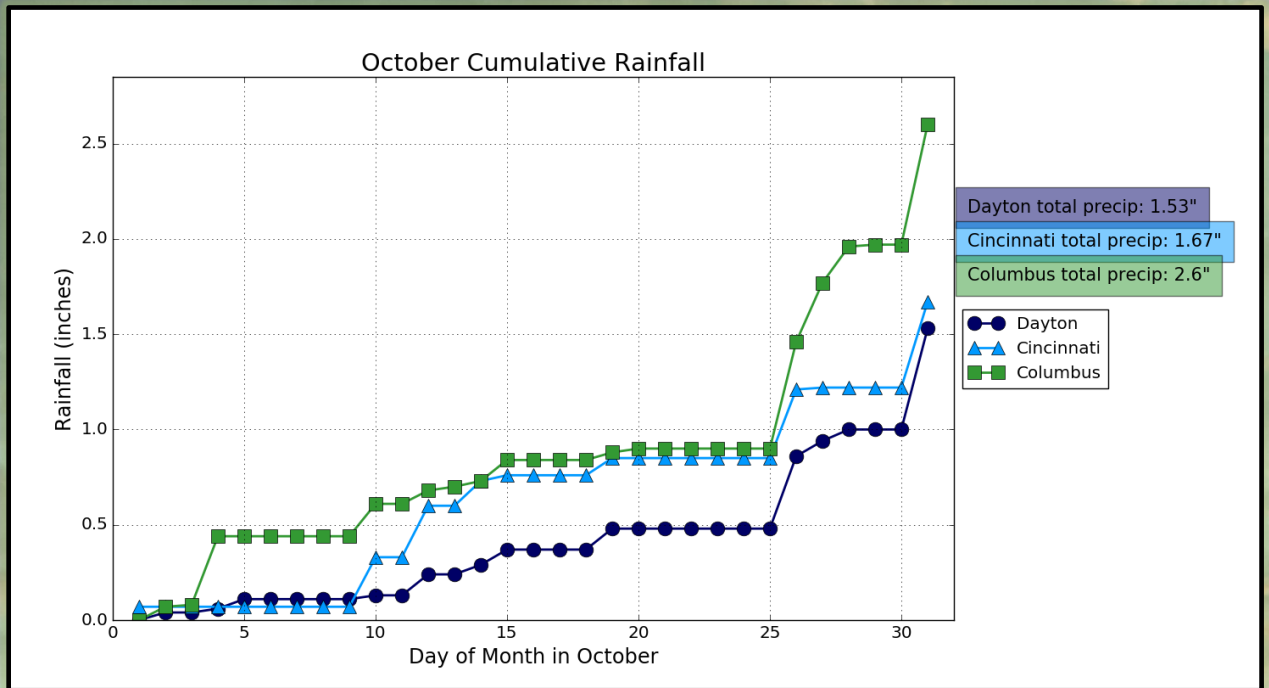
Precipitation amounts were generally light across the region for the middle of the month. A system on the 19th brought some widespread rainfall to the region, but remained on the light side. Drizzle continued into the overnight hours into the 20th. A very vigorous system brought strong winds, banded rain, and some light snow to the region as the day progressed on the 20th.

Drier conditions worked back into the region for the 21st. This dry stretch ended on the 26th. Cloudy and rainy conditions were present for the weekend of the 26th-28th. Some light rain and sprinkles continued into the morning of the 29th. Dry conditions on the 30th were short lived as several rounds of precipitation began to work into the region on the 31st.

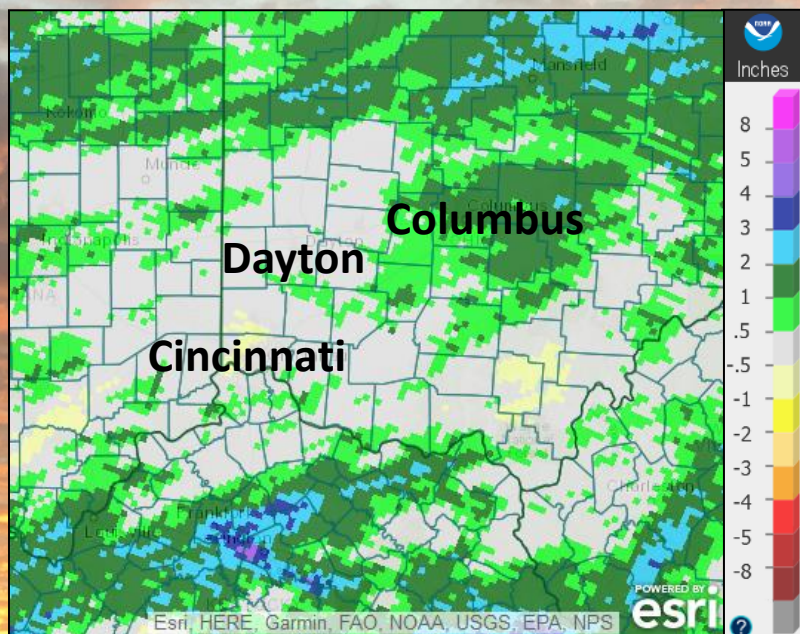
Site	Total Precipitation (in.)	Departure From Normal (in.)	Max Daily Precipitation (in./date)		Total Snowfall (in.)
Cincinnati (CVG)	1.67	-1.63	0.45	31st	0
Columbus (CMH)	2.60	-0.01	0.63	31st	0
Dayton (DAY)	1.53	-1.40	0.53	31st	0



Precipitation (Continued)



October Precipitation Departure From Normal



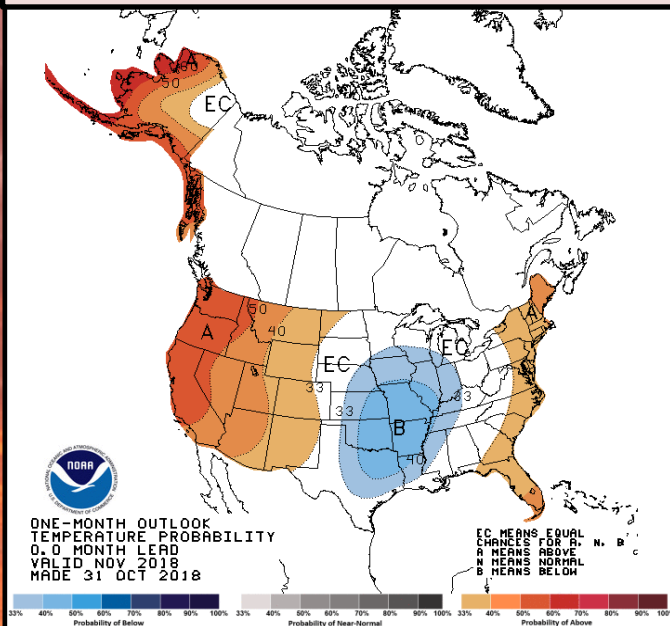
November Outlook

The latest outlook from the Climate Prediction Center (CPC) calls for above normal precipitation chances across the region. Temperatures for most of the area are equal chances of above normal, normal, and below normal conditions.

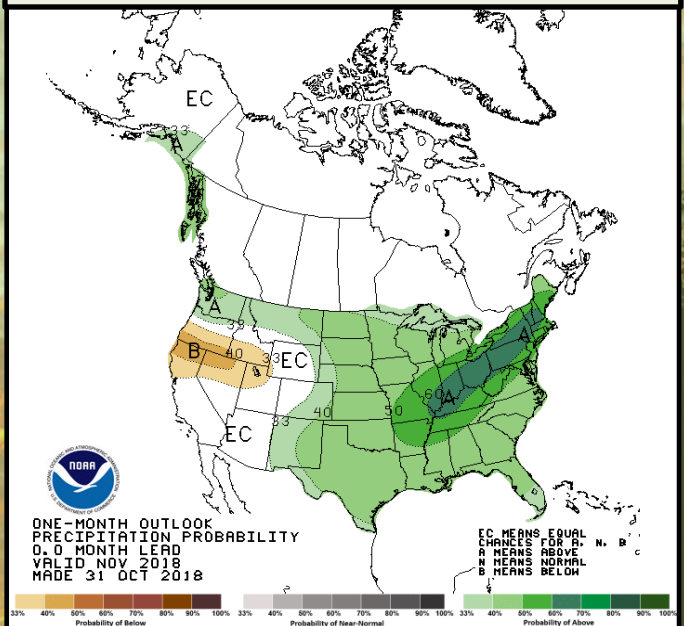
Site	Normal Avg Temp (°F)	Normal High (°F)	Normal Low (°F)
Cincinnati (CVG)	45.1	54.0	36.2
Columbus (CMH)	44.4	52.6	36.1
Dayton (DAY)	42.8	51.1	34.6

Site	Normal Precipitation (in.)	Normal Snowfall (in.)
Cincinnati (CVG)	3.43"	0.4"
Columbus (CMH)	3.20"	0.9"
Dayton (DAY)	3.39"	0.6"

Upcoming Temperature Outlook



Upcoming Precipitation Outlook

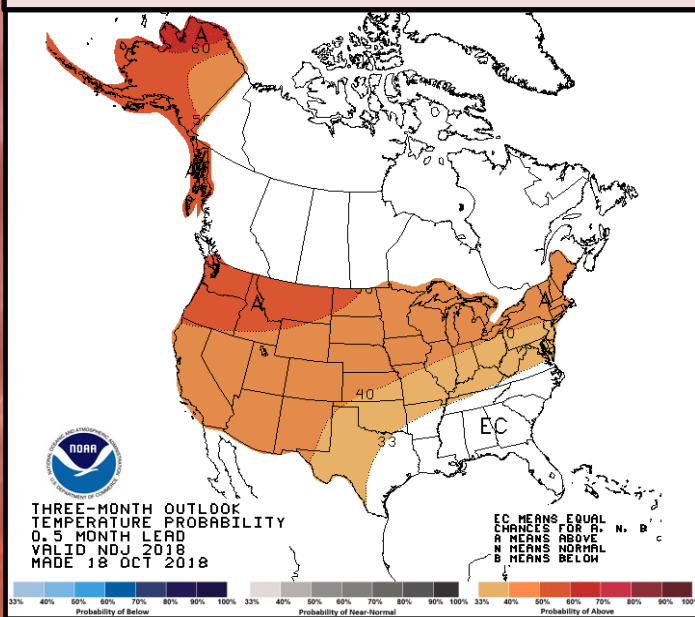


November-January Outlook

There is an increased likelihood of above normal temperatures during the November to January time-frame. There is not as clear of a signal for precipitation with equal chances of below normal, normal, and above normal precipitation.

The El Niño watch continues with a 70% to 75% chance of an El Niño to develop and continue through the winter.

Three-Month (NDJ) Temp. Outlook



Three-Month (NDJ) Precip. Outlook

