



# NWS Wilmington, Ohio October 2020 Regional Climate Summary

## Regional Climate Summary

***While the month of October started off on a dry note, multiple systems brought beneficial rain to the region during the second half of the month, bringing an end to a what had generally been a drier-than-normal fall season. In fact, most spots received 4-6" of rain in October. Temperatures, however, never strayed too far from seasonal norms, with average temperatures very close to normal for the month as a whole.***

# Temperatures

*For a majority of the first week, temperatures were below normal. There was some frost as temperatures dropped into the 30s a couple times at night. This changed for the second week of the month as most locations were above normal. Towards the middle of the month, temperatures leveled out closer to normal values.*

*Heading into the start of the second half of the month, cold mornings brought frost and freeze conditions to the region through the middle of the month. The cooler-than-normal temperatures were brief, however, as high temperatures again eclipsed 80°F by the 20<sup>th</sup>.*

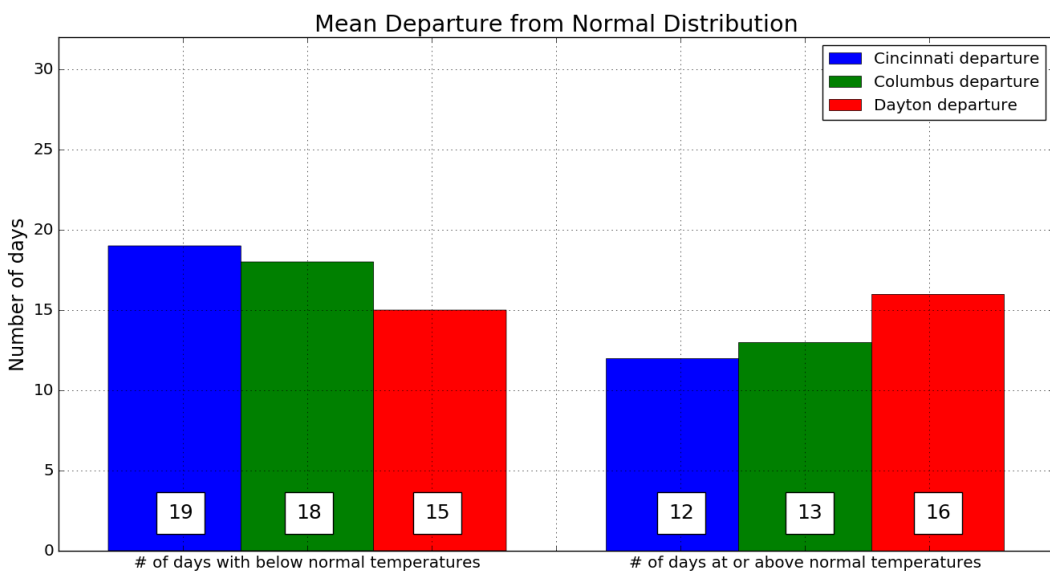
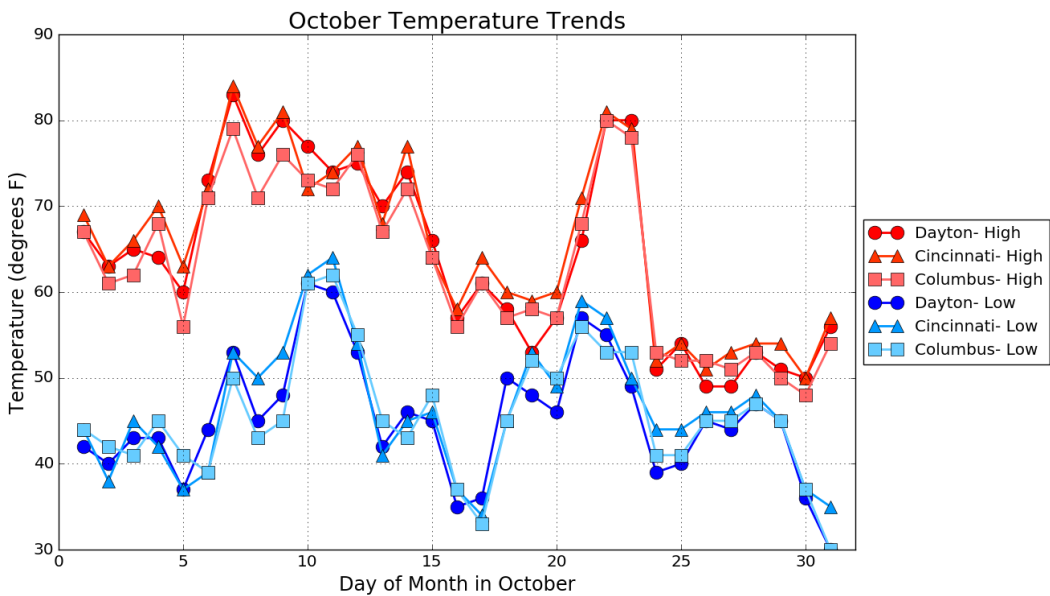
*A strong cold front moved through the region on the 23<sup>rd</sup>, bringing an end to the warmer-than-normal pattern that had evolved for the region. In fact, temperatures for the remainder of the month remained slightly below normal, with numerous days with highs in the 50s and lows in the 30s and 40s. This brought multiple days of frost to parts of the region, especially on Halloween as morning temperatures dipped into the upper 20s and lower 30s.*

*Average temperatures for the month, as a whole, were very close to seasonal norms.*

| Site             | Avg Temp (°F) | Avg High Temp (°F) | Avg Low Temp (°F) | Departure From Normal (°F) | Maximum Temperature (°F) | Minimum Temperature (°F) |
|------------------|---------------|--------------------|-------------------|----------------------------|--------------------------|--------------------------|
| Cincinnati (CVG) | 56.1°F        | 65.6°F             | 46.5°F            | + 0.2°F                    | 84°F (10/07)             | 34°F (10/17)             |
| Columbus (CMH)   | 54.5°F        | 63.3°F             | 45.6°F            | - 0.2°F                    | 80°F (10/22)             | 30°F (10/31)             |
| Dayton (DAY)     | 54.8°F        | 64.3°F             | 45.3°F            | + 0.9°F                    | 83°F (10/07)             | 30°F (10/31)             |



# Temperatures (Continued)



# Precipitation

*Precipitation during the first half of the month was near normal to below normal. Most locations had under an inch of rain during this time and many areas did not even receive a half inch of rain during the first half of the month. A line of showers and storms moved through on the 12<sup>th</sup> bringing with it some gusty winds. Due to these low rainfall totals during the first half of the month, a large portion of the area near and northwest of I-71 were in abnormally dry to moderate drought conditions.*

*Dry conditions continued until about the 19<sup>th</sup> when a stalled frontal boundary and a series of low pressure systems brought multiple rounds of rain to the region for a 5-day period lasting through the 23<sup>rd</sup>. Many spots received measurable rainfall each day in this 5-day stretch. In fact, there was only one totally dry day on the 25<sup>th</sup> until a similar pattern evolved from the 26<sup>th</sup> through the 29<sup>th</sup>. A heavy-rain producing system moved through the Ohio Valley from late in the evening on the 28<sup>th</sup> into early on the 29<sup>th</sup>, bringing widespread beneficial rainfall to the area. Many spots received 1-2," with isolated higher amount of 3" in a few locales in southeast Indiana and southwest Ohio.*

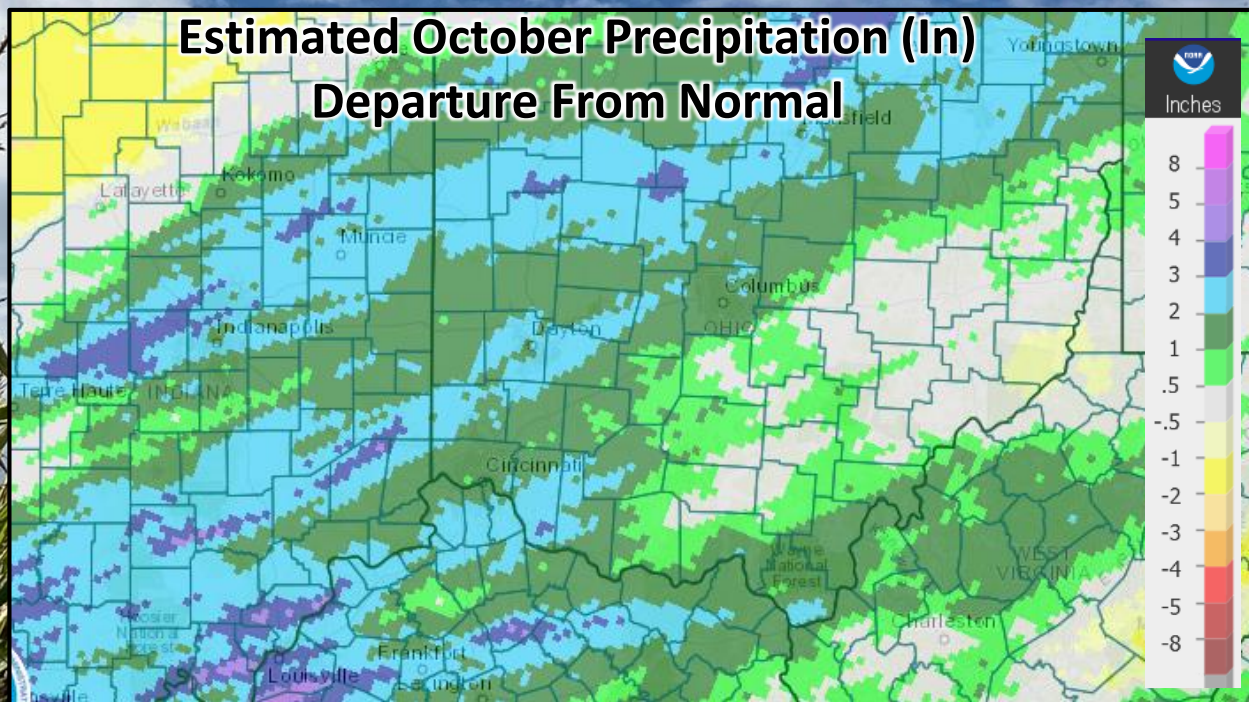
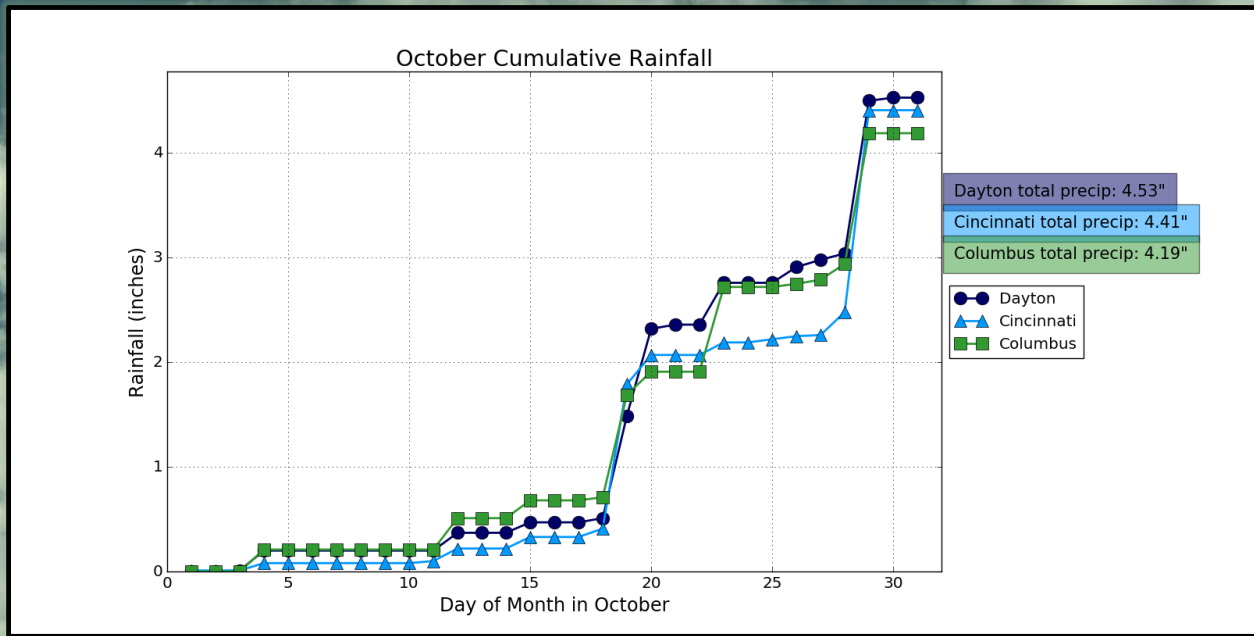
*The heavy-rain event from the 28<sup>th</sup> into the 29<sup>th</sup> set several records, with Dayton (DAY) (1.46") and Cincinnati (CVG) (1.93") both breaking daily site records of 1.22" (1917), and 1.84" (1883), respectively. The daily total at Columbus (CMH) of 1.25" was not a daily record.*

*As a result of the heavy rain on the 29<sup>th</sup>, most of the region ended the month with above normal precipitation, in general about 1-2" above normal.*

| Site             | Total Precipitation (in.) | Departure From Normal (in.) | Max Daily Precipitation (in./date) |       | Total Snowfall (in.) | Max Daily Snowfall (in./date) |     |
|------------------|---------------------------|-----------------------------|------------------------------------|-------|----------------------|-------------------------------|-----|
| Cincinnati (CVG) | 4.41"                     | + 1.11"                     | 1.93"                              | 10/29 | N/A                  | N/A                           | N/A |
| Columbus (CMH)   | 4.19"                     | + 1.58"                     | 1.25"                              | 10/29 | N/A                  | N/A                           | N/A |
| Dayton (DAY)     | 4.53"                     | + 1.60"                     | 1.46"                              | 10/29 | N/A                  | N/A                           | N/A |



# Precipitation (Continued)



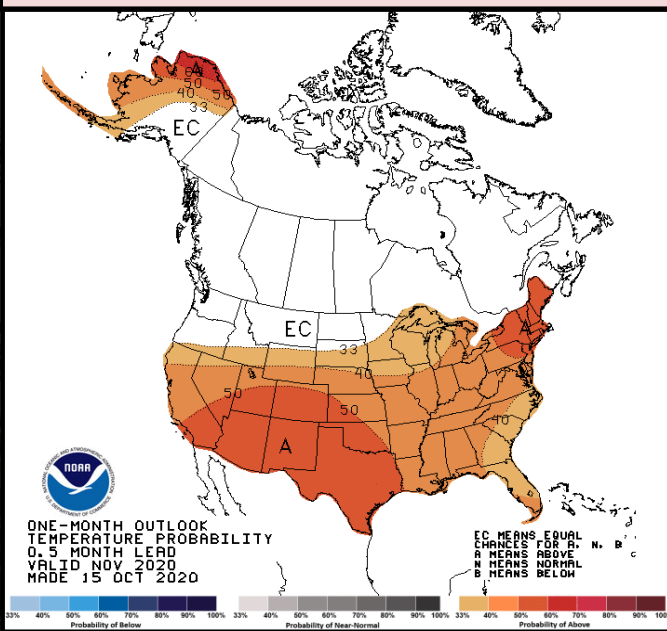
# November Outlook

The latest outlook from the Climate Prediction Center (CPC) calls for a warmer-than-normal November with near-normal precipitation across the Ohio Valley.

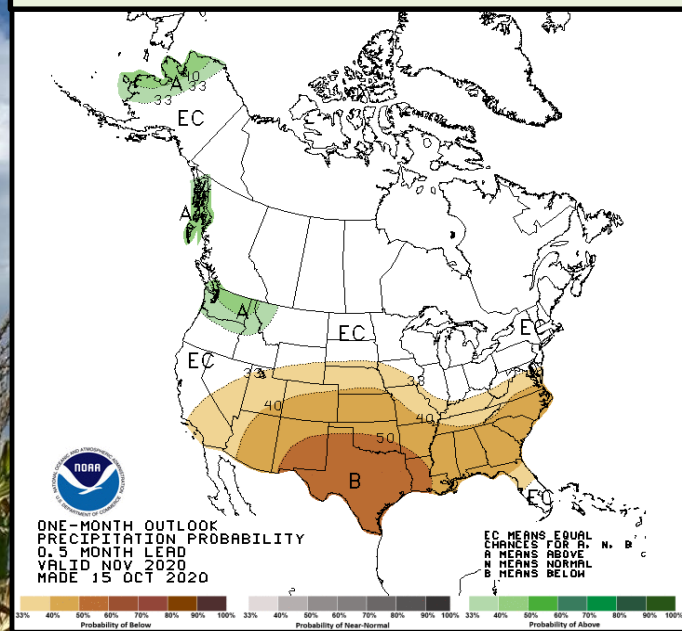
| Site             | Normal Avg Temp (°F) | Normal High (°F) | Normal Low (°F) |
|------------------|----------------------|------------------|-----------------|
| Cincinnati (CVG) | 45.1°F               | 54.0°F           | 36.2°F          |
| Columbus (CMH)   | 44.4°F               | 52.6°F           | 36.1°F          |
| Dayton (DAY)     | 42.8°F               | 51.1°F           | 34.6°F          |

| Site             | Normal Precipitation (in.) | Normal Snowfall (in.) |
|------------------|----------------------------|-----------------------|
| Cincinnati (CVG) | 3.43"                      | 0.4"                  |
| Columbus (CMH)   | 3.20"                      | 0.9"                  |
| Dayton (DAY)     | 3.39"                      | 0.6"                  |

## Upcoming Temperature Outlook



## Upcoming Precipitation Outlook

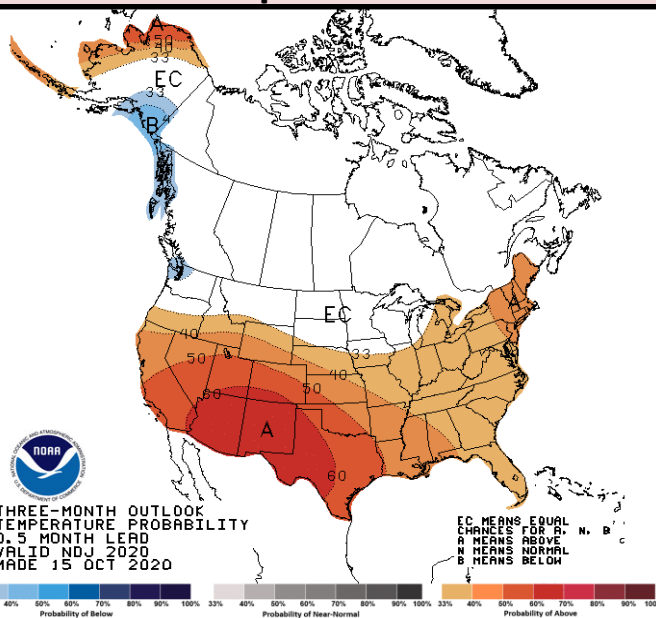


# November-January Outlook

*A La Niña advisory continues, with La Niña conditions currently present that are expected to last through the winter months, with indications of a strengthening La Niña for at least the first part of the winter season before a trend toward a weaker, more-neutral state evolves toward next spring.*

*The seasonal outlook from the Climate Prediction Center reflects the typical temperature and precipitation patterns that evolve in a La Niña pattern, with above normal temperatures favored for the southern half of the country, including much of the northeast U.S., and near to slightly below normal precipitation for many of these areas, including the Ohio Valley.*

## Three-Month (NDJ) Temp. Outlook



## Three-Month (NDJ) Precip. Outlook

