

NWS Wilmington, Ohio June 2026 Regional Weather Summary

Regional Weather Summary

A seasonably cool start to June ended with Extreme Heat headlines on the final day of the month. Precipitation amounts varied quite a bit due to the increased thunderstorm activity in the warm season.

Several days of severe weather and flooding were observed throughout the month. Most notably, the severe event on June 17-18 resulted in widespread wind damage and a total of 7 tornadoes confirmed in our coverage area.

Temperatures

A seasonably cool start to June quickly transitioned to a stretch of warmer than normal temperatures by the end of the first week, with highs reaching the middle 80s to lower 90s. This seasonably warm air mass between the first and second week of June did result in a record high minimum temperature of 75 degrees at the Columbus site. No other temperature records were broken for this month.

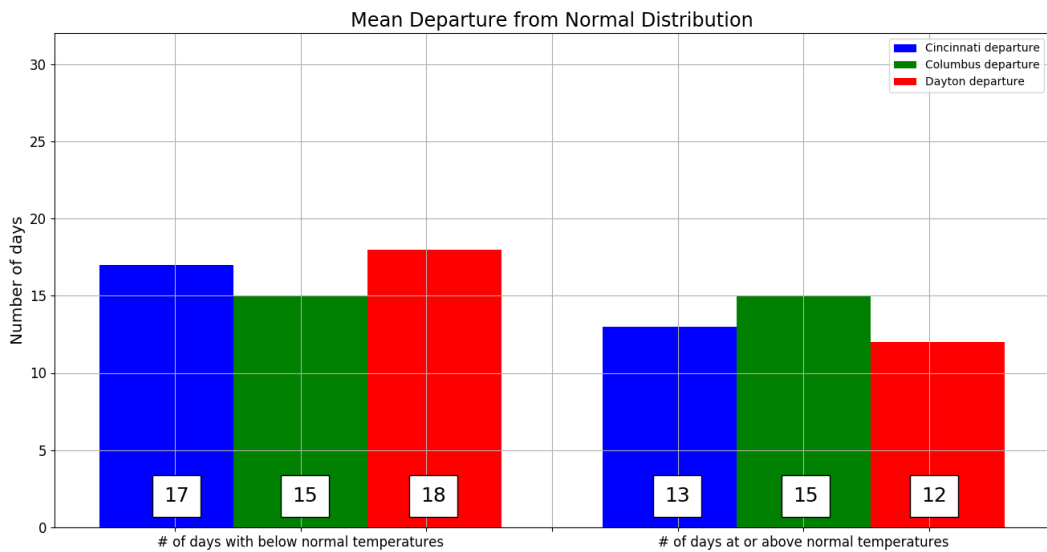
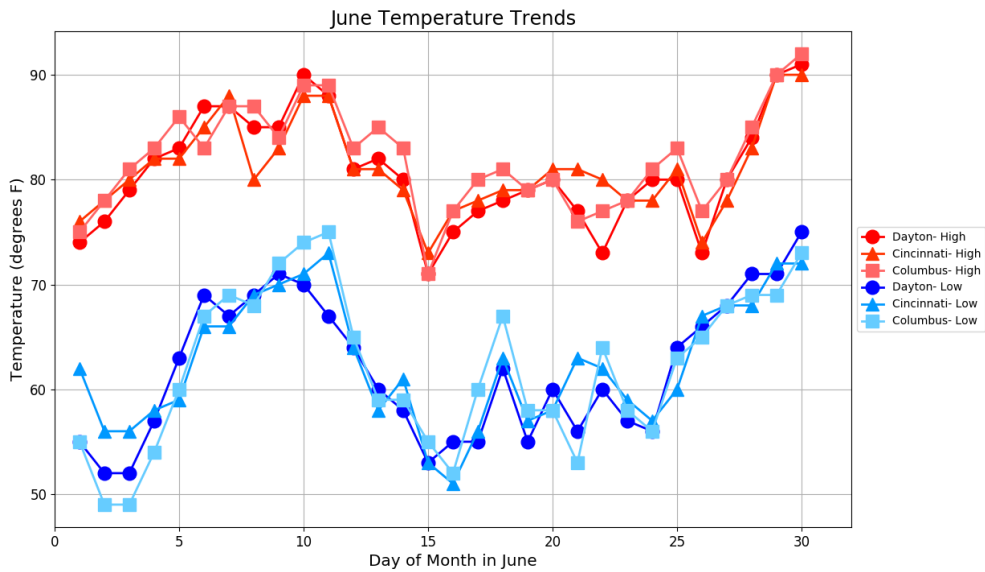
After this heat wave, a prolonged stretch of seasonably cool temperatures persisted throughout the middle month and continued up until the last few days of the month. This helped push monthly temperature averages below normal for the majority of our counties. Both Dayton and Cincinnati climate sites ended below normal, with the Dayton airport coming in more than a full degree below average. However, the Columbus airport managed to eke out average monthly temperatures 0.2 degrees above normal.

The month of June would end with an anomalously strong upper level ridge that ushered in a hot and humid air mass. Heat headlines were in effect the past couple days of the month, with our entire coverage area under an Extreme Heat Warning on the final day.

Site	Avg Temp (°F)	Avg High Temp (°F)	Avg Low Temp (°F)	Departure From Normal (°F)	Maximum Temperature (°F)	Minimum Temperature (°F)
Cincinnati (CVG)	71.8	81.9	62.5	-0.5	90 on 29 th /30 th	51 on 16 th
Columbus (CMH)	72.1	82.0	62.1	+0.2	92 on 30 th	49 on 2 nd /3 rd
Dayton (DAY)	71.4	80.8	61.9	-1.3	91 on 30 th	52 on 2 nd /3 rd



Temperatures (Continued)



Precipitation

Accumulated rainfall was quite variable across our counties given the increased amount of thunderstorm activity this month. The first several days of June were pretty quiet before the pattern became more unsettled near the end of the first full week. Several days of measurable rainfall occurred during the second and third weeks of June.

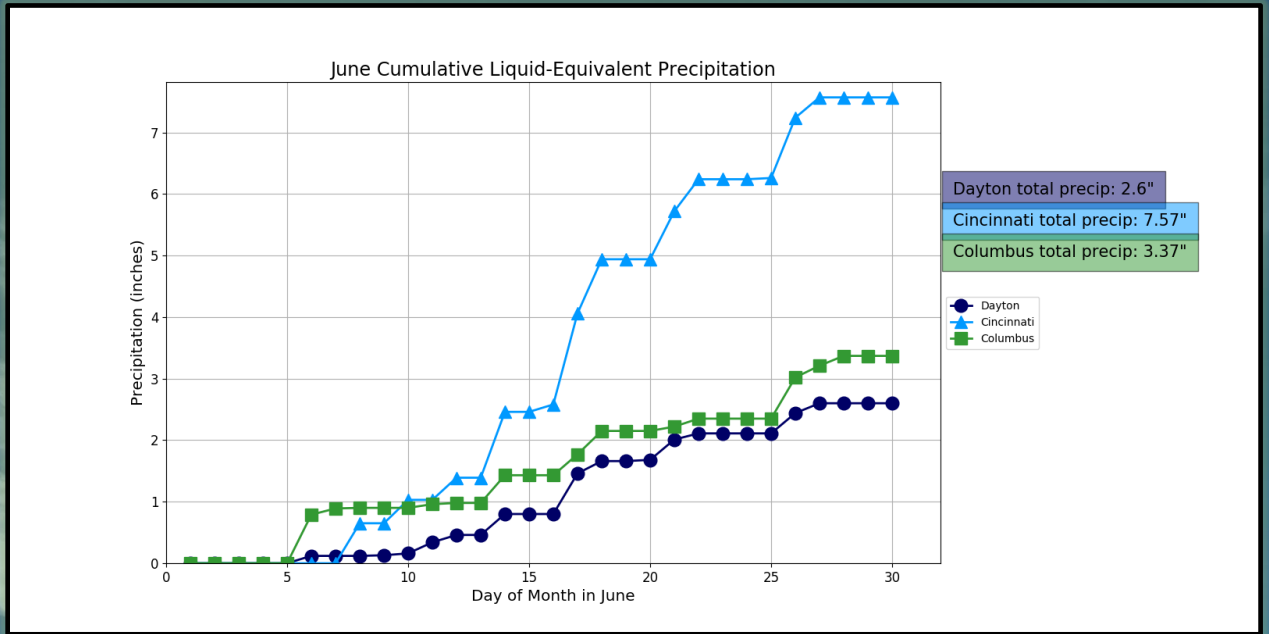
The most substantial rainfall came with the storms between June 17-18 that brought severe weather and tornadoes across the region. For rainfall, this marked the highest daily amounts for both Dayton and Cincinnati. In fact, a record daily rainfall was broken at the Cincinnati airport on June 17, with 1.48" measured that calendar day. The Cincinnati airport would add another 0.88" on the 18th as training storms continued to move through during the overnight period. However, Columbus and Dayton came in quite lower during that event, with Columbus only receiving 0.72" and Dayton receiving 0.86" when combining rain amounts from the 17th and 18th. This is nearly 1.5" less than Cincinnati.

When all said and done, both Dayton and Columbus would end the month with below normal precipitation values, while Cincinnati would end up with a whopping surplus of nearly 3" above normal.

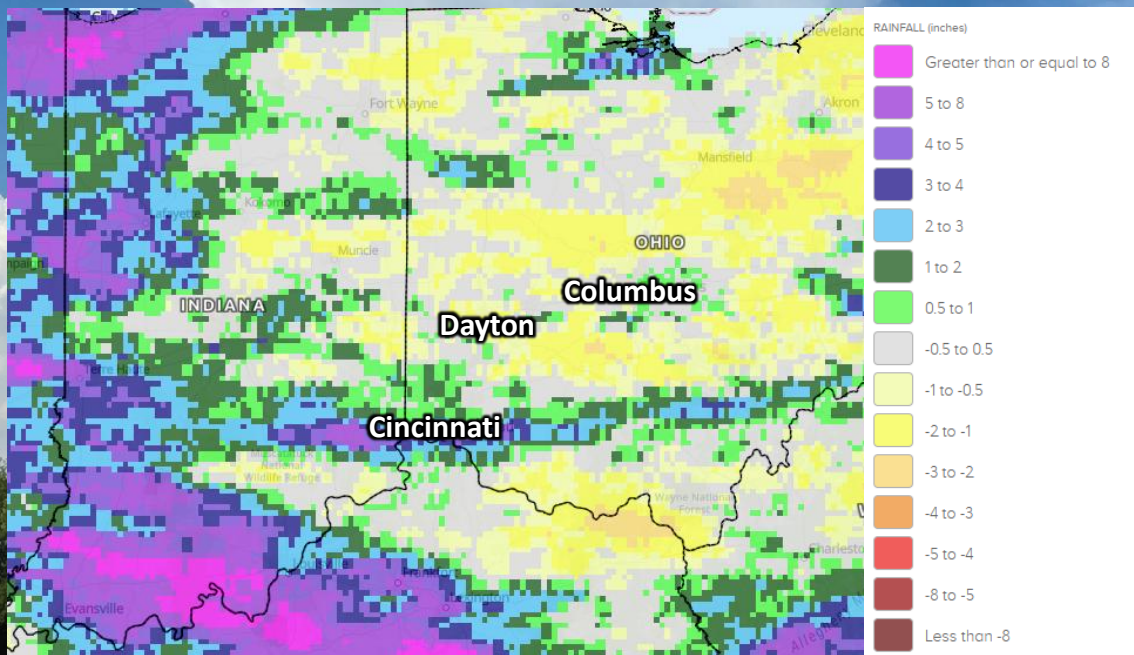
Site	Total Precipitation (in.)	Departure From Normal (in.)	Max Daily Precipitation (in./date)	
Cincinnati (CVG)	7.57	+2.82	2.32	17 th /18 th
Columbus (CMH)	3.37	-0.96	0.89	6 th /7 th
Dayton (DAY)	2.60	-1.54	0.86	17 th /18 th



Precipitation (Continued)



June Precipitation Departure From Normal (In.)



July Outlook

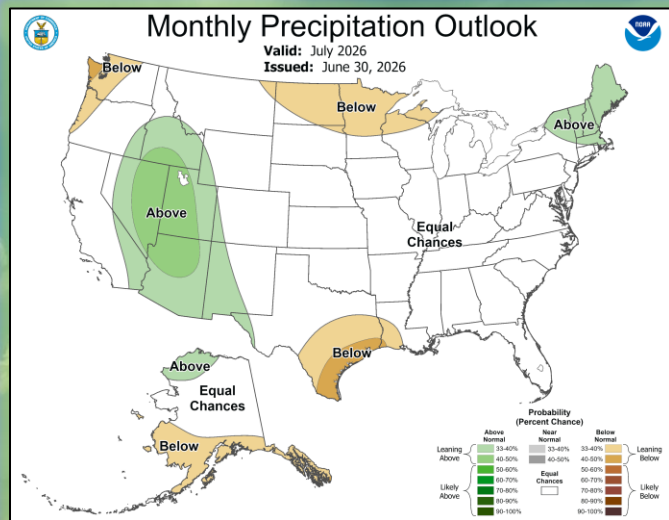
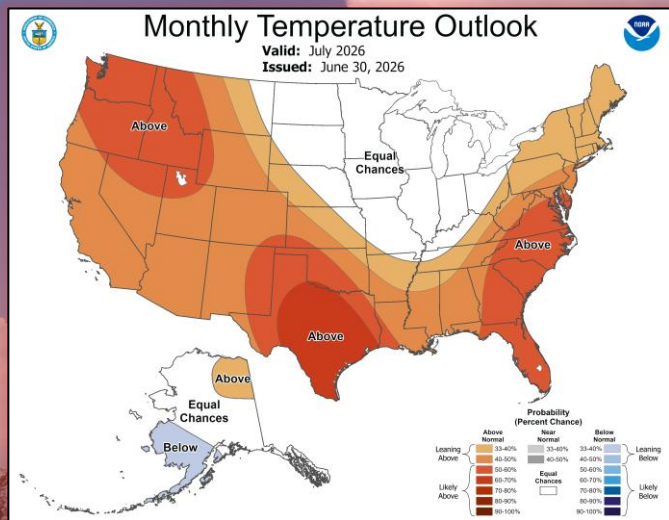
The latest outlook from the Climate Prediction Center calls for equal chances for above, below and near normal temperature and precipitation values for the majority of our counties in July. There is a slight lean towards above normal temperatures in portions of northern KY and southern OH.

Site	Normal Avg Temp (°F)	Normal High (°F)	Normal Low (°F)
Cincinnati (CVG)	75.9	86.0	65.9
Columbus (CMH)	75.4	85.4	65.4
Dayton (DAY)	76.0	85.9	66.1

Site	Normal Precipitation (in.)	Normal Snowfall (in.)
Cincinnati (CVG)	3.83	0.0
Columbus (CMH)	4.67	0.0
Dayton (DAY)	3.95	0.0

Upcoming Temperature Outlook

Upcoming Precipitation Outlook



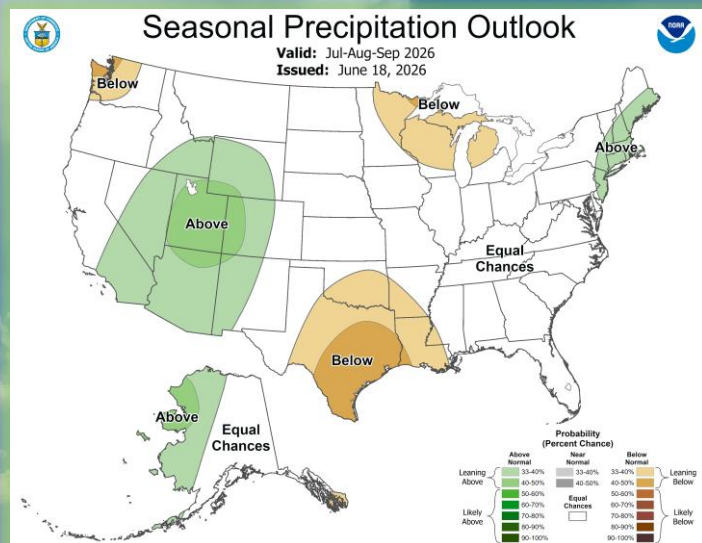
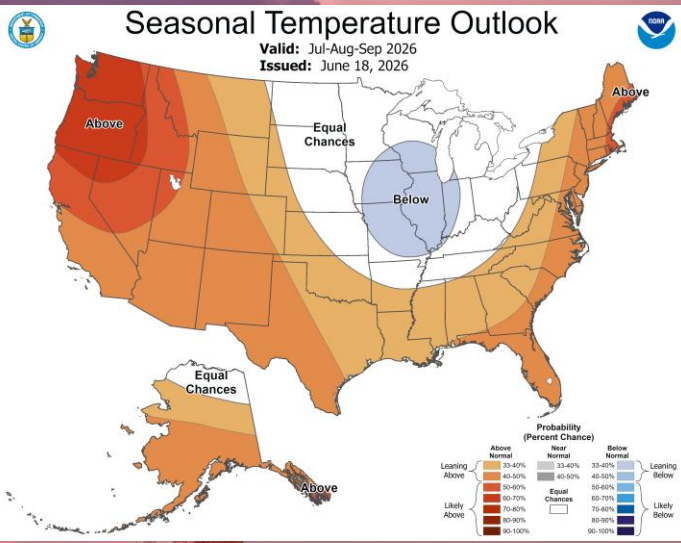
July to September Outlook

*El Nino conditions are present and expected to strengthen as we progress into the fall and winter months. The latest sea-surface temperatures (SSTs) in the Nino 3.4 region are 1.2°C above normal, indicating a moderate El Nino is already present. There is a 63% chance that a **very strong** El Nino develops later this year.*

For the next three month period (July-September), there is no robust signal for temperature/precipitation trends as equal chances remain for above, below and near normal values.

Three-Month (JAS) Temp. Outlook

Three-Month (JAS) Precip. Outlook



Severe Weather

The largest severe weather event of the month occurred the 17th into the 18th. 7 tornadoes occurred in the area with additional tornadoes occurring in other parts of the region. Tornadoes, damaging thunderstorm wind gusts, and flash flooding all occurred with this event. Below is a map of where the tornadoes occurred.

This was not the only severe weather event during the month. Multiple other days had severe weather occur over the area. June 6th and June 11th-12th both had quite a few damaging wind reports near and north of I-70. The June 6th event also had several hail reports.

Other severe reports during the month were more isolated than these three events listed.

- [Tornado confirmed near Aurora, IN \(EF2\)](#) (Dearborn County IN / Ohio County IN / Boone County KY)
- [Tornado confirmed near Florence, KY \(EF1\)](#) (Boone County KY / Kenton County KY)
- [Tornado confirmed near Drewersburg, IN \(EF2\)](#) (Franklin County IN / Butler County OH)
- [Tornado confirmed near Carrollton, KY \(EF1\)](#) (Switzerland County IN / Carroll County KY)
- [Tornado confirmed near Elm Grove, OH \(EF2\)](#) (Pike County OH)
- [Tornado confirmed near Williamstown, KY \(EF1\)](#) (Grant County KY)
- [Tornado confirmed near Maysville, KY \(EF2\)](#) (Mason County KY)

