



NWS Wilmington, Ohio

May 2025

Regional Weather Summary

Regional Weather Summary

The month of May featured a fairly wet pattern across the region, with rainfall generally about 1-2" above seasonal norms. Because of the rainier pattern, there was no substantial late springtime heat. Temperatures ended up being around 1-2 degrees below normal values for the month.

Temperatures

Several systems came through during the first week of month. This led to swings in temperatures from above normal, to below normal, and then to near normal.

For the second week of the month temperatures started out below normal, however gradually rose to above normal values. The 15th and 16th saw the warmest readings of the month as temperatures climbed into the 80s , which was ~10 degrees or so above normal values. A robust system moved through the 16th to the 17th bringing temperatures closer to normal.

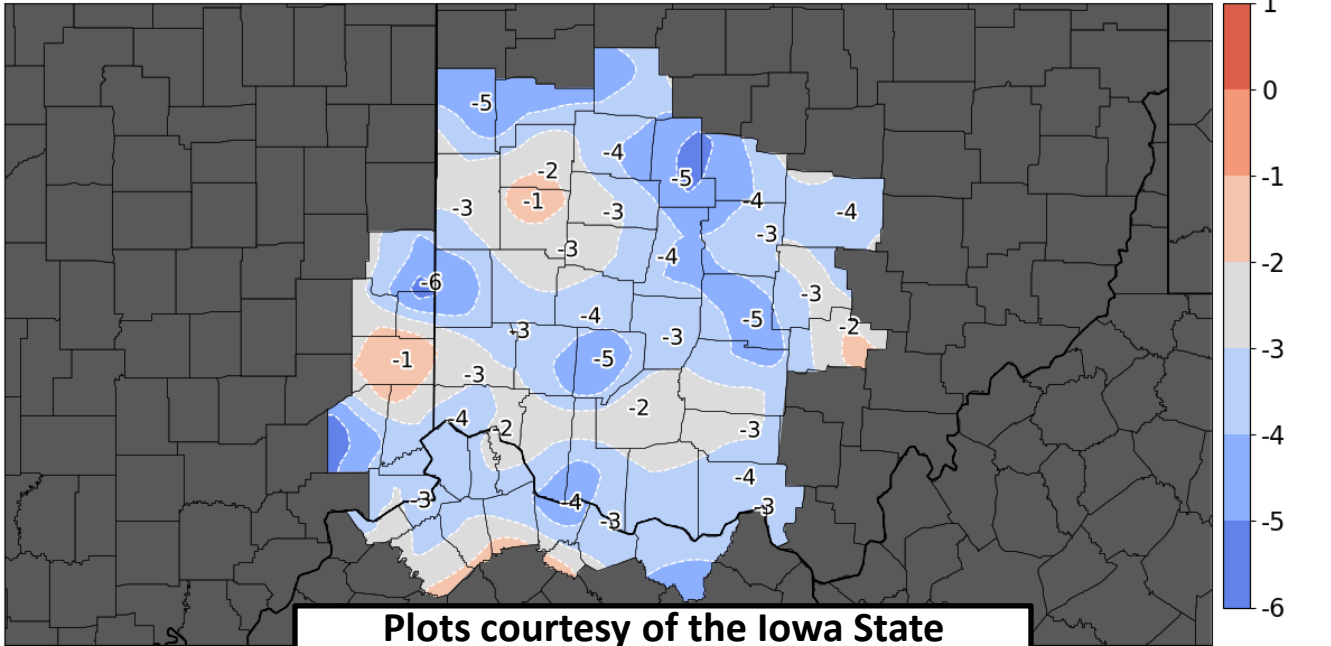
Below normal temperatures developed by the 19th or 20th around the region. Temperatures continued to drop with values the 22nd and the 23rd over 10 degrees below normal. In fact, the final 10 days of the month were characterized by below normal temperatures across the entire area. As a result, this prolonged stretch of cooler weather helped yield temperature anomalies ~1-2 degrees below normal for the entire month of May.

Site	Avg Temp (°F)	Avg High Temp (°F)	Avg Low Temp (°F)	Departure From Normal (°F)	Maximum Temperature (°F)	Minimum Temperature (°F)
Cincinnati (CVG)	62.5°F	70.9°F	54.0°F	-1.6°F	84 on 15 th	42 on 23 rd
Columbus (CMH)	61.4°F	70.5°F	52.4°F	-1.9°F	85 on 15 th	40 on 10 th
Dayton (DAY)	61.6°F	70.4°F	52.7°F	-2.4°F	86 on 15 th	41 on 9 th

Temperatures (Continued)



1 May 2025 thru 31 May 2025 Average High Temperature Departure [F]
2025 is compared with IEM Climatology 1951-present to compute departures



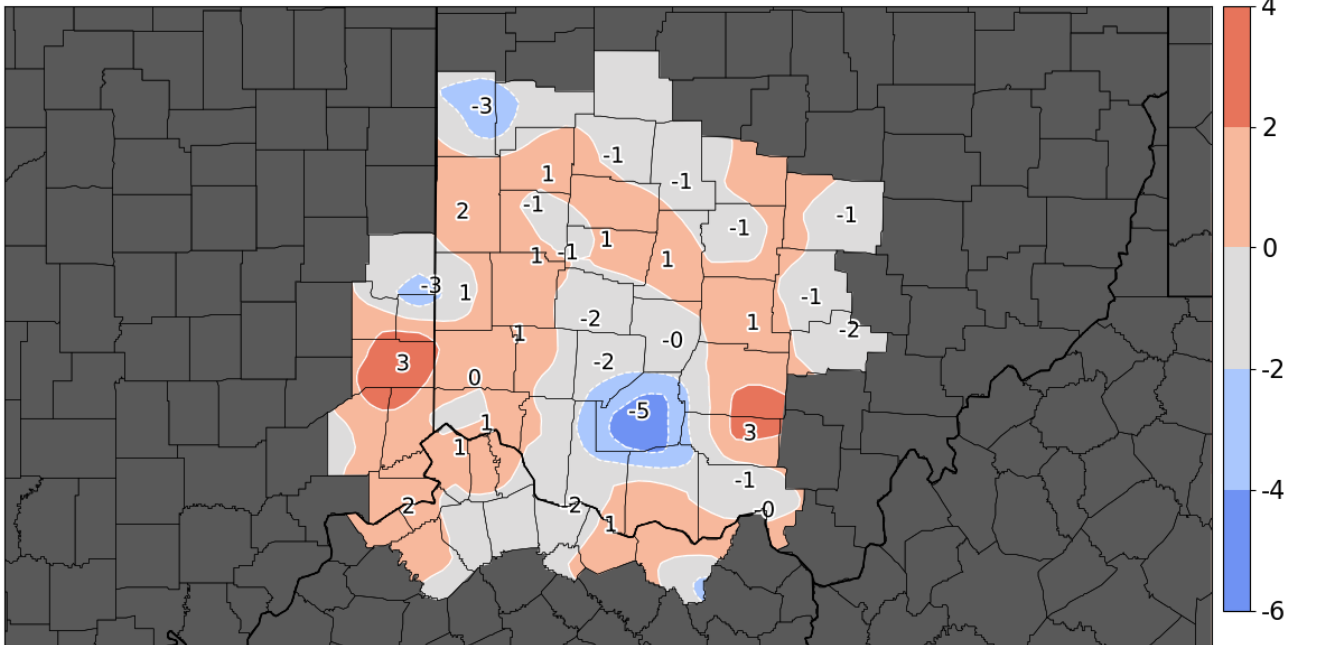
Generated at 1 Jun 2025 3:34 PM CDT in 7.14s

data units :: F
IEM Autoplot App #97

**Plots courtesy of the Iowa State
Mesonet (IEM) Automated Data Plotter**



1 May 2025 thru 31 May 2025 Average Low Temperature Departure [F]
2025 is compared with IEM Climatology 1951-present to compute departures



Generated at 1 Jun 2025 3:34 PM CDT in 7.57s

data units :: F
IEM Autoplot App #97



Precipitation

May started out on a very wet note with several days of widespread rain across the region. After several days of heavy rainfall across the region, a slightly drier pattern evolved after the first full week of the month.

A drier stretch briefly evolved for the second week of May before a return to wetter conditions occurred by mid month. Although there were days of widespread rain, the spotty nature of showers and thunderstorms led to widely-variable amounts from location-to-location. The second half of May ended on a slightly drier note as a whole, although there were still a few days of showers and thunderstorms, particularly on the 27th and 28th , and again on the 30th.

Overall, most of the area ended up with precipitation that was slightly above normal, although parts of west-central Ohio and east-central Indiana ended the month of May near or slightly below normal.

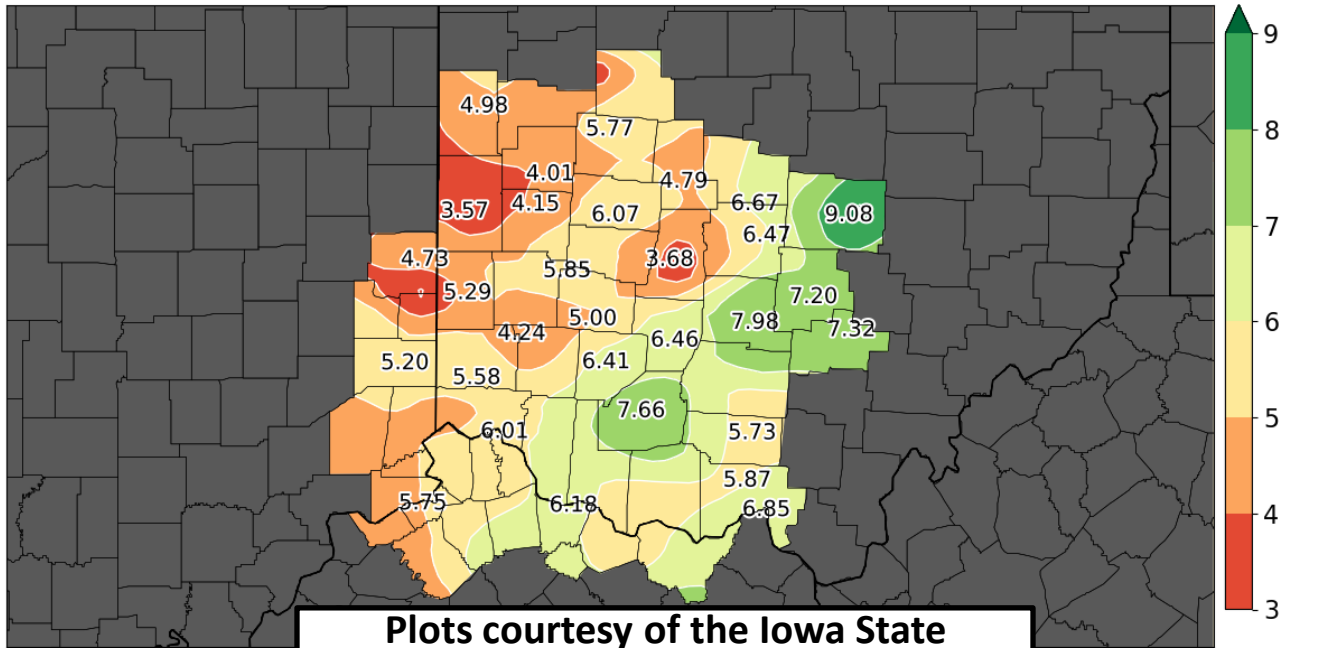
Site	Total Precipitation (in.)	Departure From Normal (in.)	Max Daily Precipitation (in./date)	
Cincinnati (CVG)	5.30"	+ 0.63"	1.61"	2 nd -3 rd
Columbus (CMH)	6.47"	+ 2.48"	2.48"	2 nd -3 rd
Dayton (DAY)	5.00"	+ 0.49"	1.23"	5 th -6 th



Precipitation (Continued)



1 May 2025 thru 31 May 2025 Precipitation Total [inch]



Generated at 1 Jun 2025 3:31 PM CDT in 7.03s

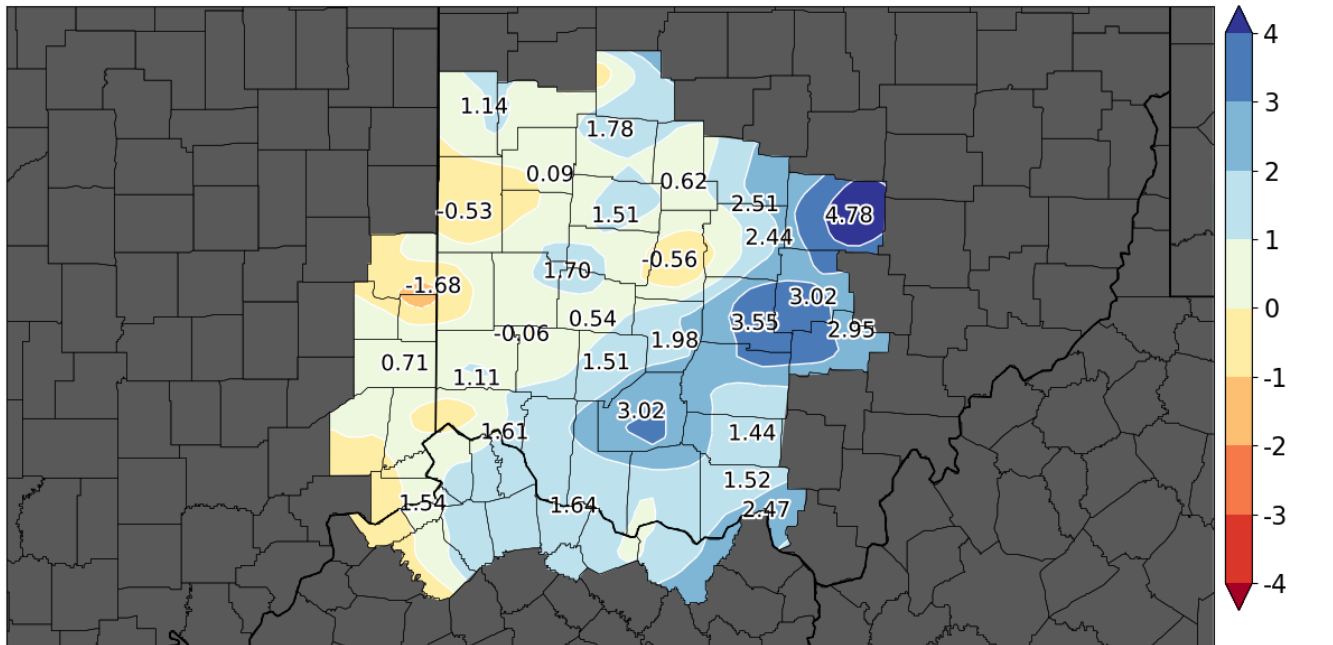
data units :: inch
IEM Autoplot App #97

Plots courtesy of the Iowa State
Mesonet (IEM) Automated Data Plotter



1 May 2025 thru 31 May 2025 Precipitation Departure [inch]

2025 is compared with IEM Climatology 1951-present to compute departures



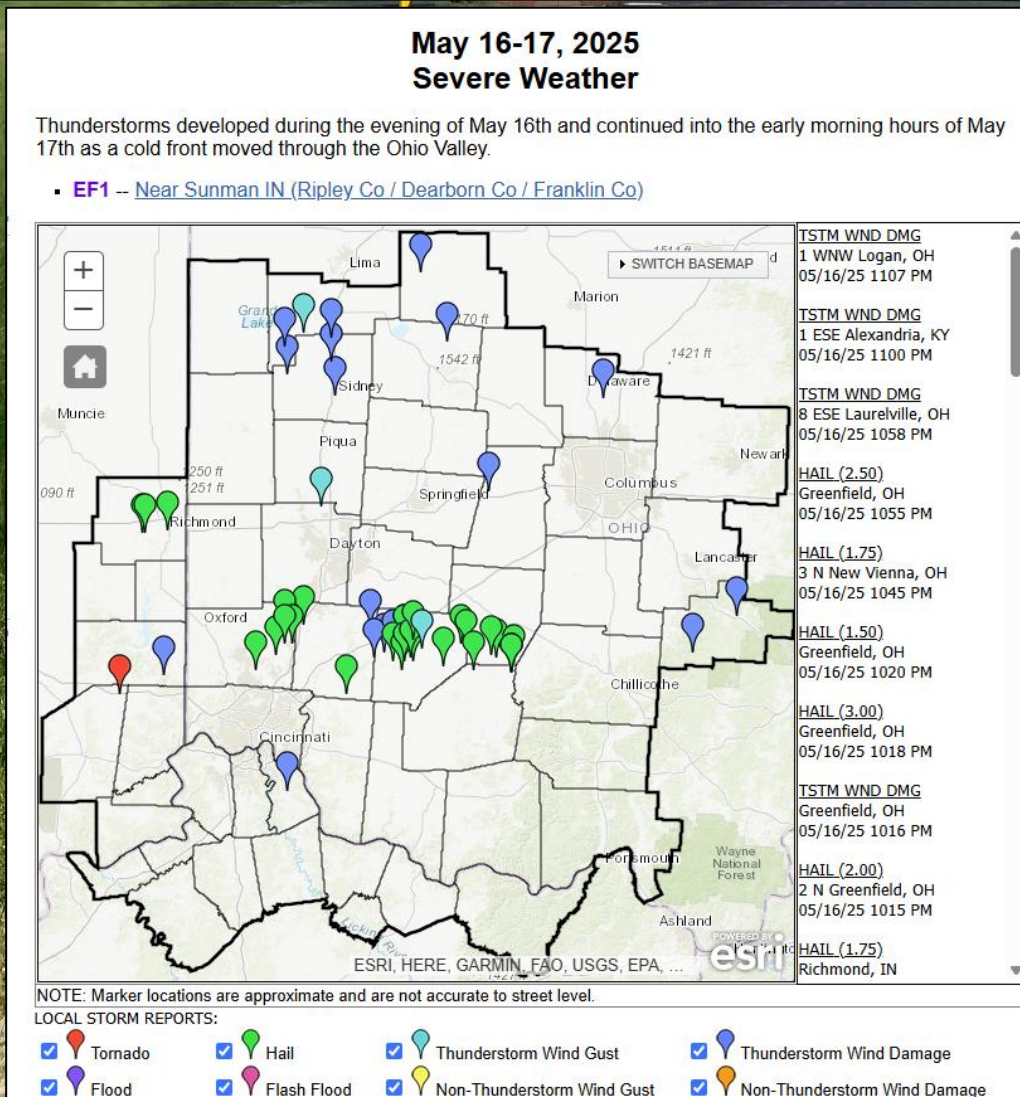
Generated at 1 Jun 2025 3:30 PM CDT in 7.50s

data units :: inch
IEM Autoplot App #97



Severe Weather

Damaging winds occurred on the 1st. Isolated large hail and damaging winds occurred on the 2nd. Isolated large hail occurred near Chillicothe on May 4th. Then on May 5th there was large hail in central Ohio. After the active start to the month, the 2nd week of the month was quieter, until severe weather returned on the 16th to 17th. Damaging winds, large hail, and a tornado occurred during this time. The tornado was an EF1 near Sunman, Indiana.



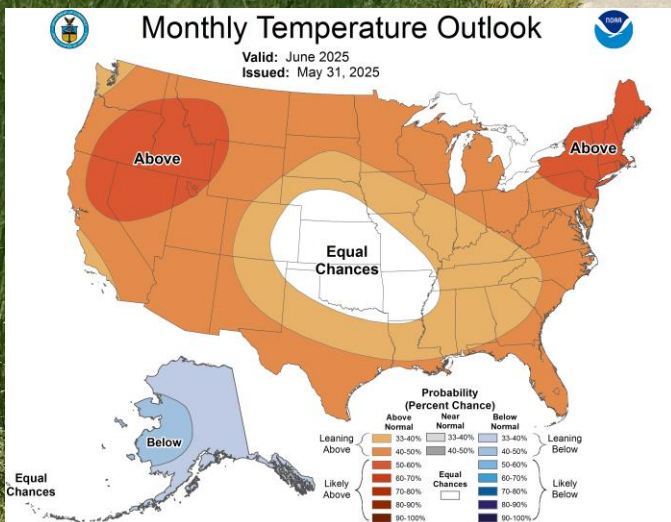
June Outlook

The latest outlook from the Climate Prediction Center (CPC) favors above normal temperatures and precipitation across parts of the Ohio Valley for the month of June.

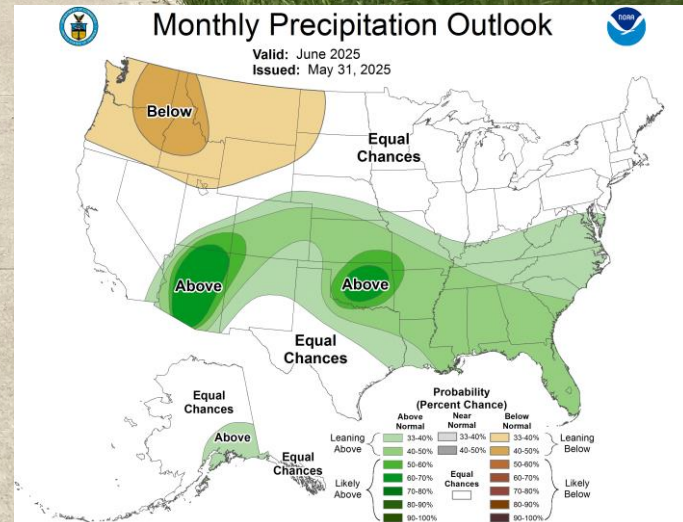
Site	Normal Avg Temp (°F)	Normal High (°F)	Normal Low (°F)
Cincinnati (CVG)	72.3°F	82.6°F	62.1°F
Columbus (CMH)	71.9°F	82.2°F	61.6°F
Dayton (DAY)	72.7°F	82.6°F	62.7°F

Site	Normal Precipitation (in.)	Normal Snowfall (in.)
Cincinnati (CVG)	4.75"	0.0"
Columbus (CMH)	4.33"	0.0"
Dayton (DAY)	4.14"	0.0"

Upcoming Temperature Outlook



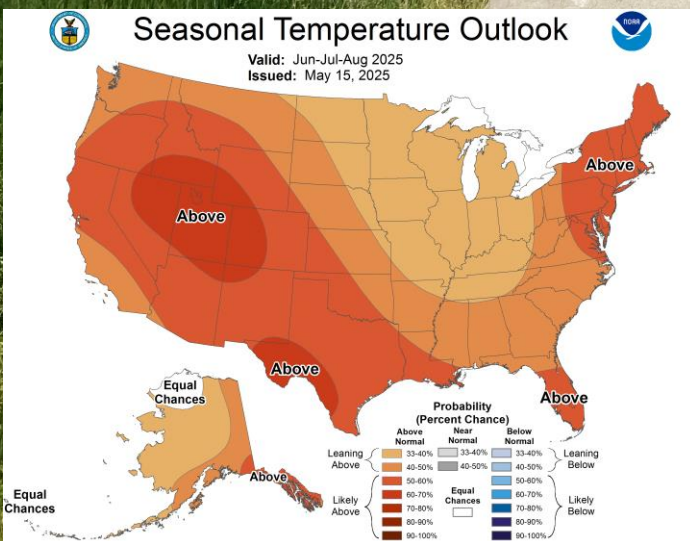
Upcoming Precipitation Outlook



June - August Outlook

ENSO-neutral conditions persisted through the month of May. The Climate Prediction Center (CPC) suggests that ENSO-neutral is favored to continue through this summer across the Northern Hemisphere, with a 74% chance of occurrence between June-August. The likelihood of ENSO-neutral begins to decrease by late summer/early fall, but there is still greater than 50% chance of occurrence between August-October.

Three-Month (JJA) Temp. Outlook



Three-Month (JJA) Precip. Outlook

