



# Drought Information Statement for Central and Southeast Illinois

Valid September 25, 2025

Issued By: WFO Lincoln, IL

Contact Information: [nws.lincoln@noaa.gov](mailto:nws.lincoln@noaa.gov)

- The next update will be Thursday, October 2, if conditions persist or worsen.
- Please see all currently available products at <https://drought.gov/drought-information-statements>.
- Please visit <https://www.weather.gov/ilx/DroughtInformationStatement> for previous statements.
- Please visit <https://www.drought.gov/drought-status-updates> for regional drought status updates.

## Key Messages:

- Rapid expansion of drought is taking place over central and southeast Illinois.
- Dry weather is expected through the next week, potentially worsening the drought across the forecast area.





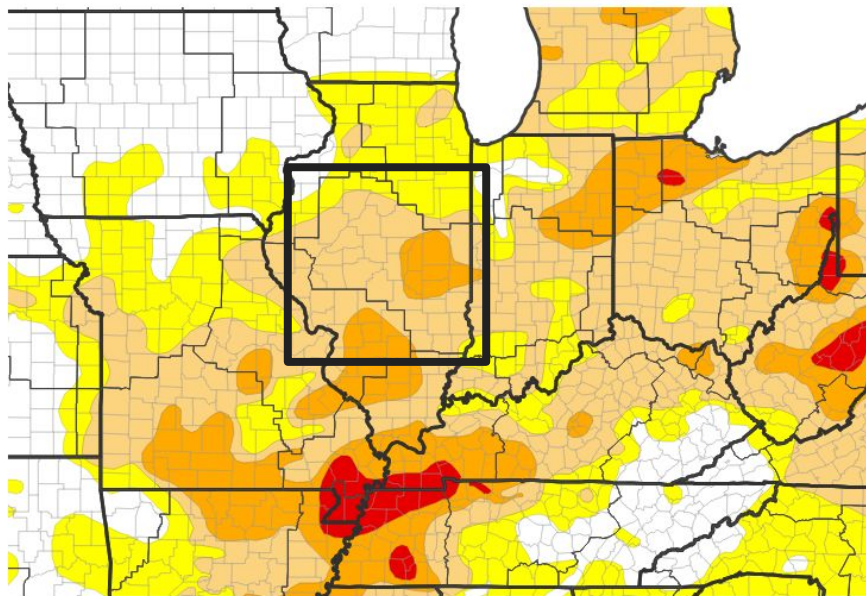
# U.S. Drought Monitor

Link to the [latest U.S. Drought Monitor](#) for central and southeast Illinois

- **Drought Intensity and Extent:**

- **D4 (Exceptional Drought):** N/A
- **D3 (Extreme Drought):** N/A
- **D2 (Severe Drought):** Champaign, Piatt, Douglas, Edgar, Moultrie, and Shelby Counties
- **D1 (Moderate Drought):** Most of central and southeast IL
- **D0 (Abnormally Dry):** Knox, Stark, and Marshall counties

## U.S. Drought Monitor



## U.S. Drought Monitor



Source(s): NDMC, NOAA, USDA; image courtesy of Drought.gov

Data Valid: 09/23/25



National Oceanic and  
Atmospheric Administration  
U.S. Department of Commerce

National Weather Service  
Lincoln, Illinois

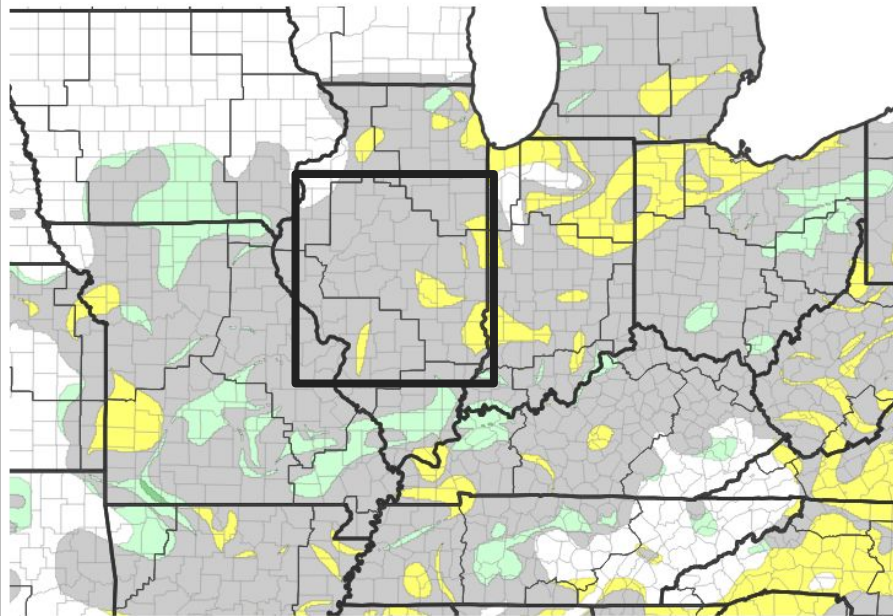


# Recent Change in Drought Intensity

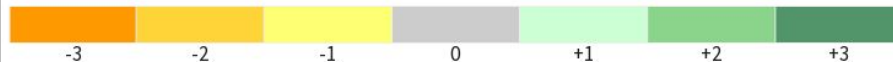
Link to the latest [1-week change map](#) for central and southeast Illinois

- **One Week Drought Monitor Class Change.**
  - Drought Worsened 1 category:
    - Moultrie, Shelby, Crawford, and Clark counties
  - Drought Improved:
    - None
  - No Change:
    - The rest of central and southeastern IL

U.S. Drought Monitor 1-Week Change Map



Drought Change Since Last Week



Source(s): NDMC, NOAA, USDA; image courtesy of Drought.gov

Data Valid: 09/23/25



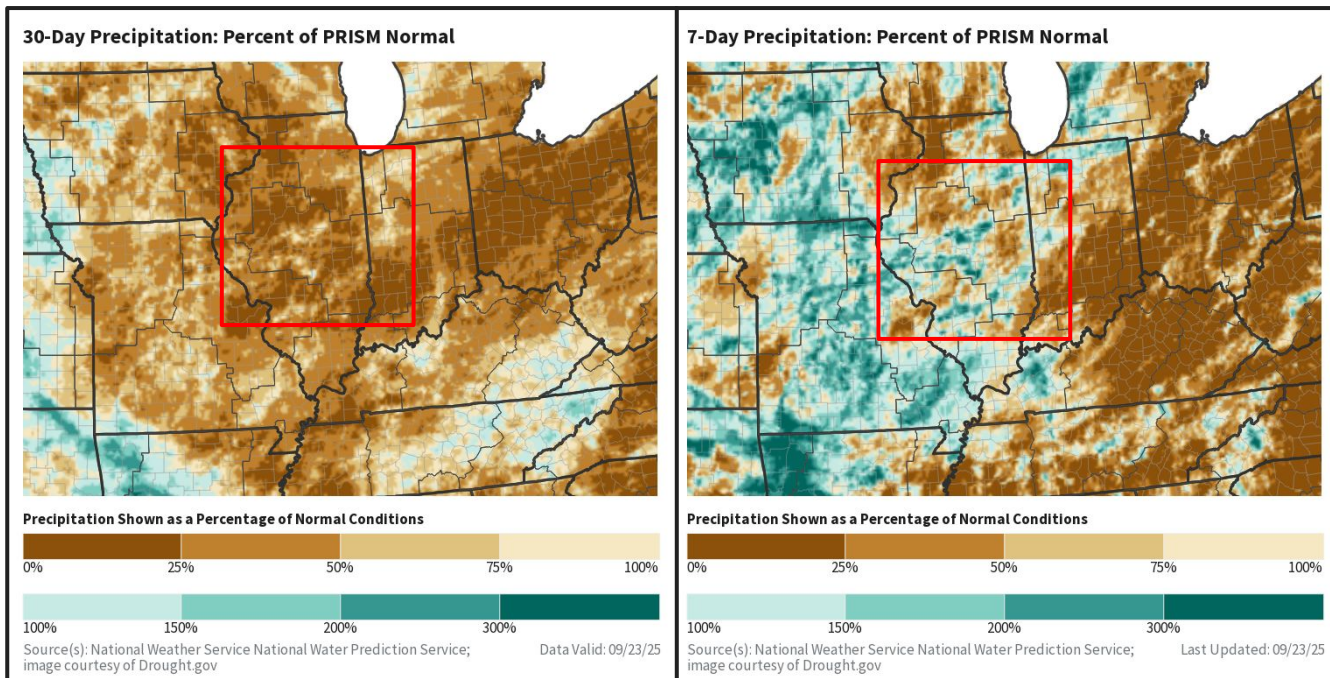




# Recent Precipitation

Last 7 days and 30 days

- Despite the areas of heavier rainfall the last few days, area-wide is still below normal for the last 30 days
- Rainfall during September has mainly been around ½-2", allowing some locations to be above normal for the week.



**Image Caption:** Total precipitation as a percentage of normal, as of September 23. Left image is a 30 day average, right image the last 7 days. Images from Drought.gov.



National Oceanic and  
Atmospheric Administration

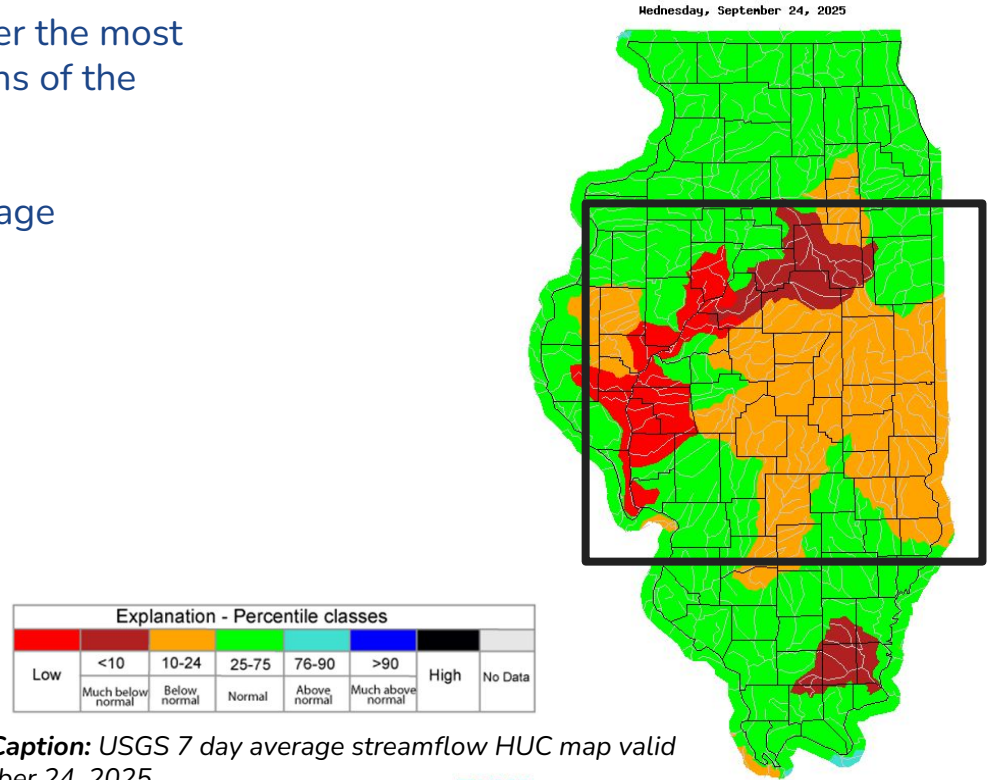
U.S. Department of Commerce

National Weather Service  
Lincoln, Illinois



# Hydrologic Conditions and Impacts

- Most streamflows are below normal, however the most significant streamflow impacts are on portions of the Illinois, and Mackinaw Rivers.
- Some areas have bumped up to normal average streamflow thanks to the recent rainfall.



**Image Caption:** USGS 7 day average streamflow HUC map valid September 24, 2025.

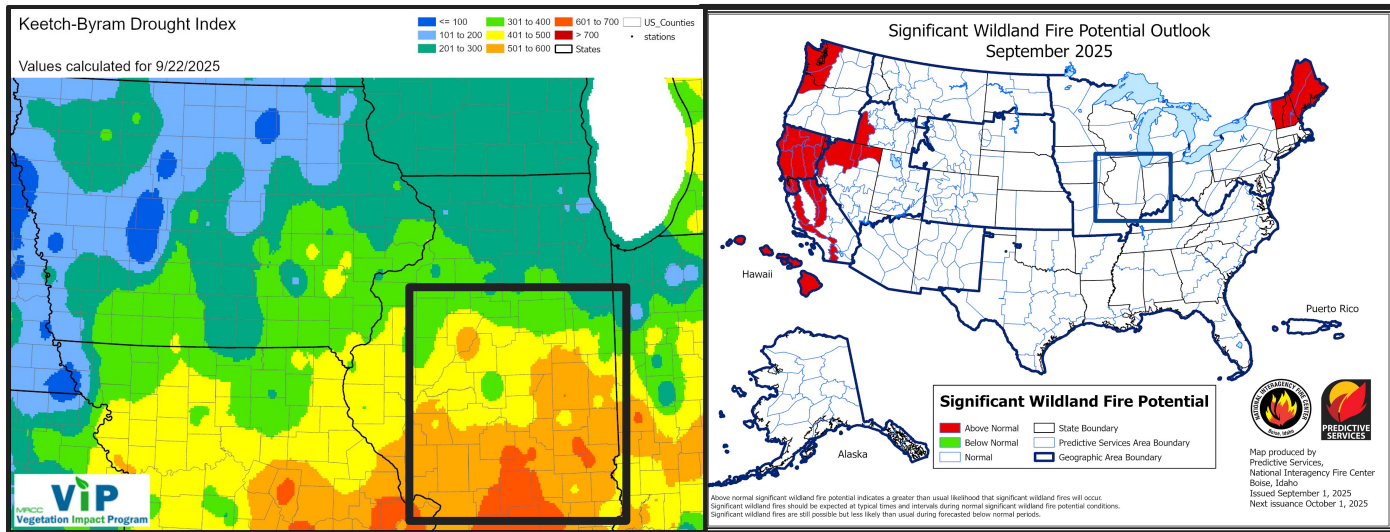




# Fire Hazard Impacts

Link to [Wildfire Potential Outlooks from the National Interagency Coordination Center](#).

- Field fire risk is a concern as farmers run hot equipment through dry fields.



**Image Caption:**

Left: [Keetch-Byram Drought Index](#) courtesy of the Midwestern Regional Climate Center, valid September 22.

Right: [Significant Wildland Fire Potential Monthly Outlook](#) for September, courtesy of the National Interagency Fire Center.



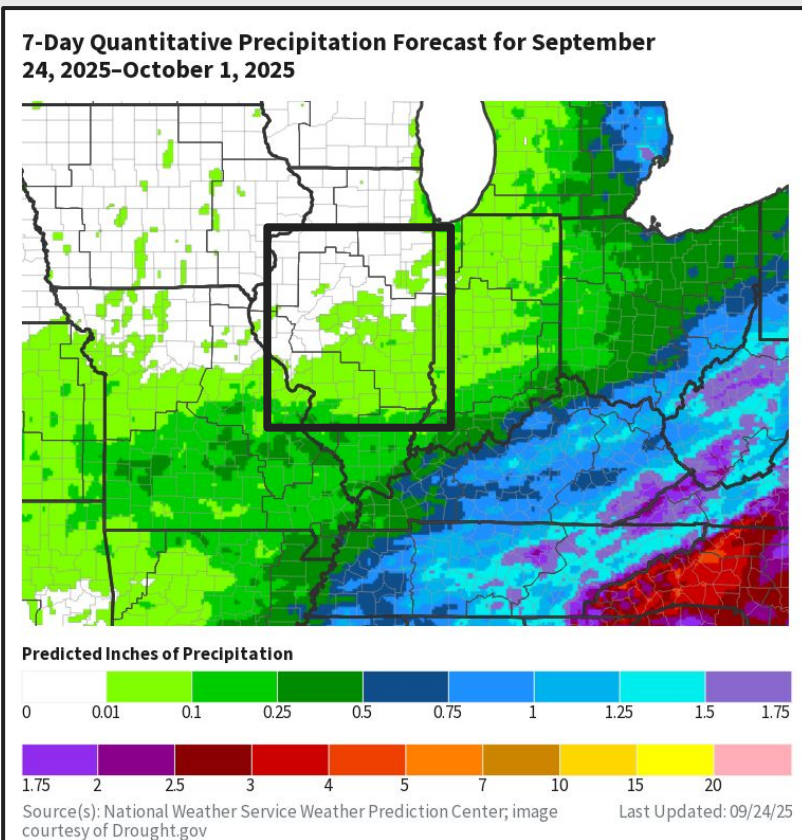
National Oceanic and  
Atmospheric Administration  
U.S. Department of Commerce

National Weather Service  
Lincoln, Illinois



# Seven Day Precipitation Forecast

- Rainfall over the next 7 days is forecast to be very minimal over most of central and southeast IL.
  - This would potentially cause further deterioration of drought conditions.



**Image Caption:** Expected rainfall over the next 7 days, valid through Thursday, October 1. Check [weather.gov/ilx](https://weather.gov/ilx) for updated forecasts.



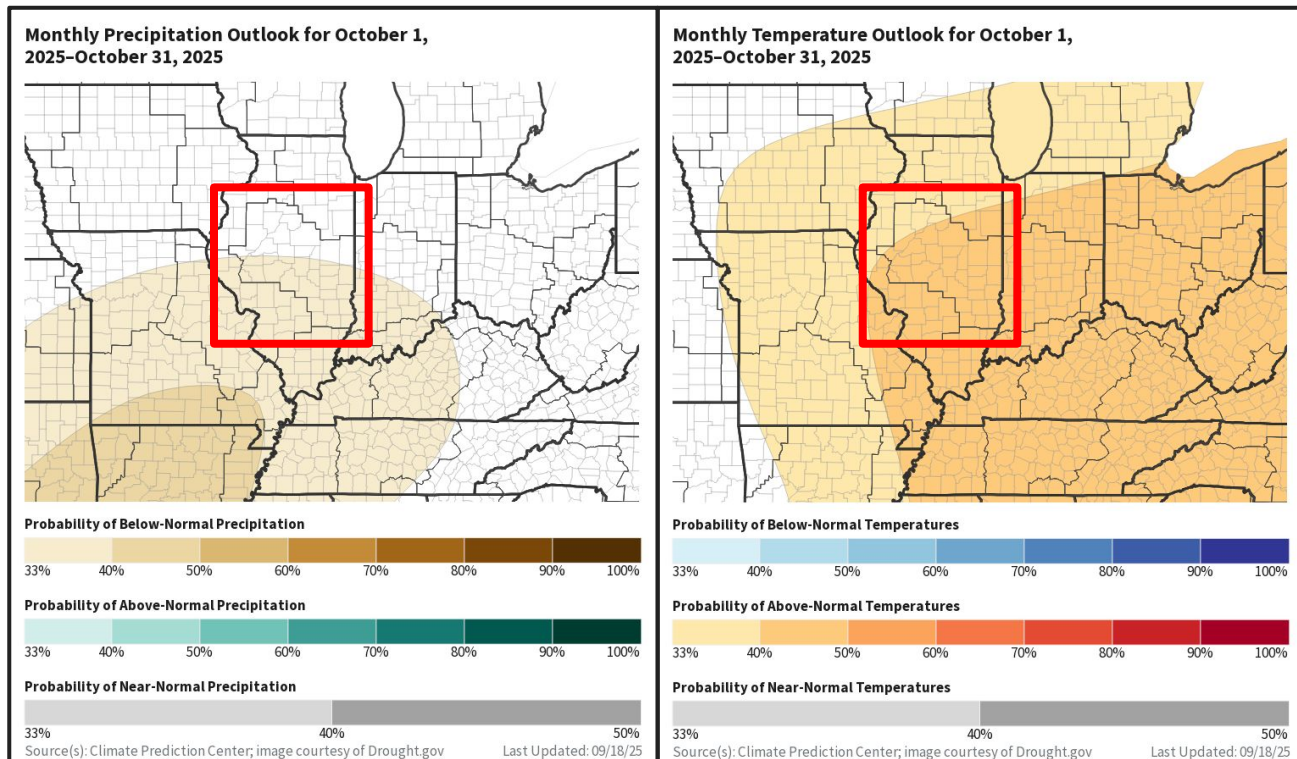




# Long Range Outlooks

The latest monthly and seasonal outlooks can be found on the [CPC homepage](#)

- The precipitation outlook has equal chances for above, near, or below normal rainfall north of I-72.  
  
South of I-72 slightly favors below normal rainfall.
- The fall temperature outlook is for a 33-50% chance of above normal temperatures.



Monthly outlook (issued 18th of the month)



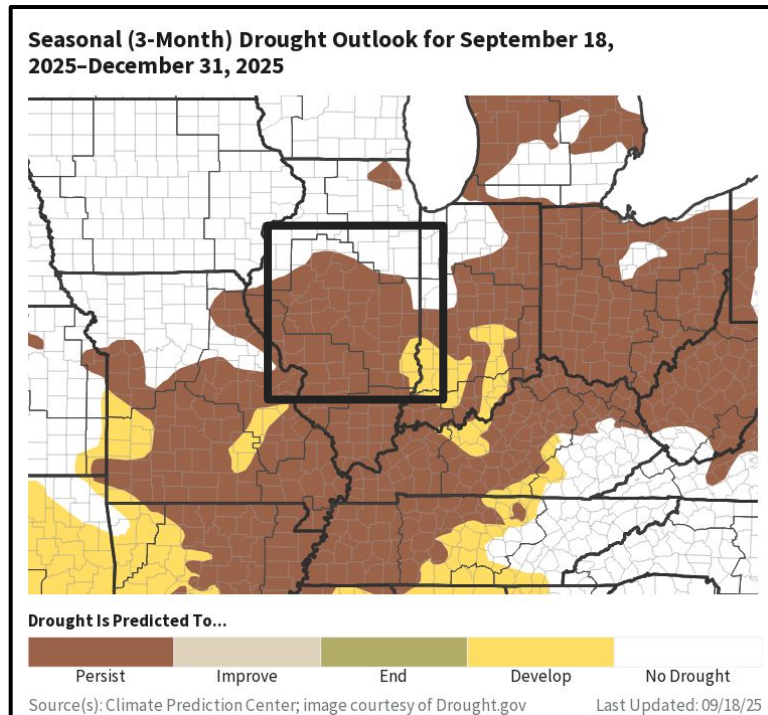




# Drought Outlook

The latest monthly and seasonal outlooks can be found on the [CPC homepage](#)

- The lack of significant rainfall in the coming months should cause drought to persist or worsen.



Links to the latest:

[Climate Prediction Center Monthly Drought Outlook](#)  
[Climate Prediction Center Seasonal Drought Outlook](#)

## Image Caption:

Climate Prediction Center Seasonal Drought Outlook  
released September 18, valid through December 31, 2025



National Oceanic and  
Atmospheric Administration  
U.S. Department of Commerce

National Weather Service  
Lincoln, Illinois



# Summary of Impacts

Links: See/submit [Condition Monitoring Observer Reports \(CMOR\)](#) and view the [Drought Impacts Reporter](#)

## Hydrologic Impacts

- Streamflow along the Illinois, Sangamon, Vermilion, and Mackinaw Rivers is below normal, and some smaller creeks are near zero flow.
- Thanks to recent rainfall some areas have seen near normal streamflow this week.
- Lake levels: Lake Decatur ~2 feet below seasonal normals, Lake Shelbyville about 2 feet below, Lake Springfield near normal. Smaller lakes and ponds are low.

## Agricultural Impacts

- Crops are drying rapidly with harvest efforts continuing. Crop yield loss is expected.

## Fire Hazard Impacts

- Burn bans have been implemented in the following areas: Lawrence, Clay, Coles, Edgar, Macon, Moultrie, Christian, and Champaign Counties, and local bans have been implemented in portions of Sangamon, Peoria, Shelby, Cumberland, McLean, and De Witt Counties.
- There is a field fire risk as farmers run hot equipment through dry fields during harvest.

## Other Impacts

- Lawns are turning brown. Trees and landscaping plants are stressed.

## Mitigation Actions

- None

