



Drought Information Statement for Central and Southeast Illinois

Valid December 9, 2023

Issued By: WFO Lincoln, IL

Contact Information: nws.lincoln@noaa.gov

- This product will be updated by Dec. 15, 2023 unless conditions improve.
- Please see all currently available products at <https://drought.gov/drought-information-statements>.
- Please visit <https://www.weather.gov/ilx/DroughtInformationStatement> for previous statements.



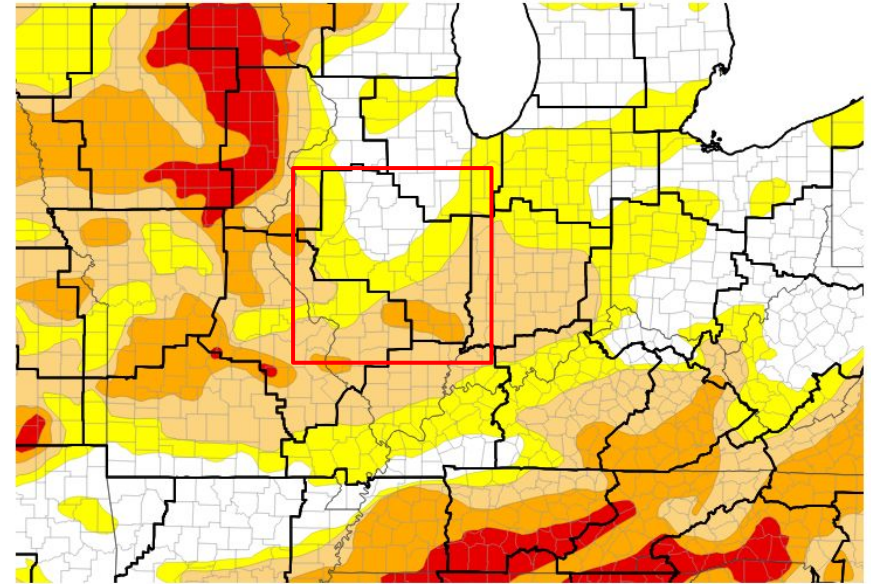


U.S. Drought Monitor

Link to the [latest U.S. Drought Monitor](#) for central and southeast Illinois

- Drought Intensity and Extent:
 - D2: (Severe Drought): Focused on southeast IL including most of Effingham, Jasper, Clay, Richland, and Lawrence Counties and portions of Crawford County. Portions of Schuyler County are included as well.
 - D1 (Moderate Drought): Focused mainly over east central Illinois including Shelby, Coles, Edgar, Cumberland, Clark, and Crawford Counties and portions of nearby counties. Portions of Schuyler and Scott Counties are included as well.
- Light rainfall amounts have taken place December 8-9, however these are not expected to meaningfully lessen drought status.

U.S. Drought Monitor



U.S. Drought Monitor



Source(s): NDMC, NOAA, USDA; image courtesy of Drought.gov

Data Valid: 12/05/23



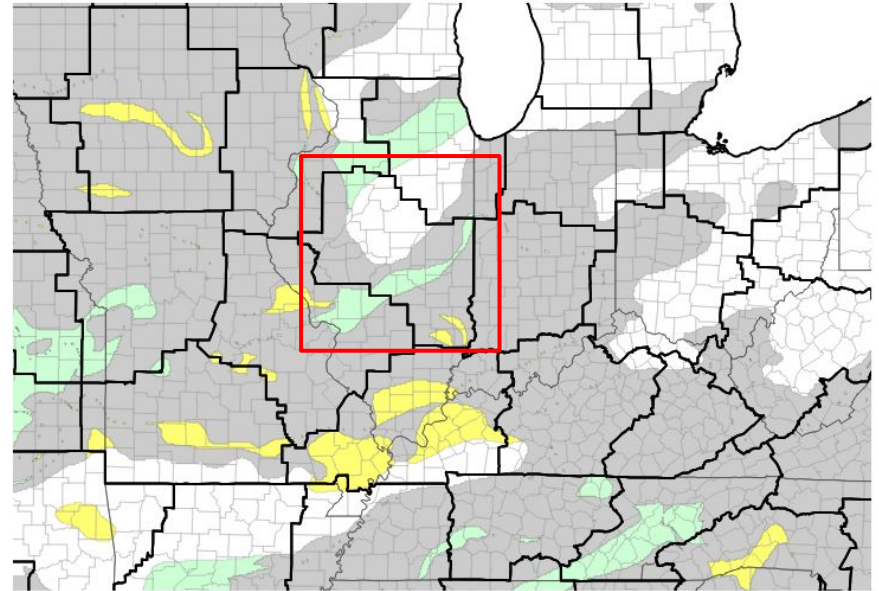


Recent Change in Drought Intensity

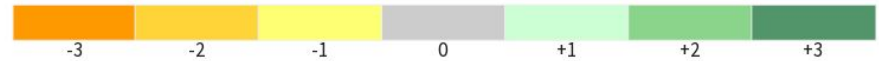
Link to the latest [1-week change map](#) for central and southeast Illinois

- One Week Drought Monitor Class Change.
 - Drought Worsened:
 - Southeast IL
 - Drought Improved:
 - From Christian County to Vermilion County through Shelby, Moultrie, and Douglas Counties
 - No Change: Most of central Illinois has seen conditions remain status quo.

U.S. Drought Monitor 1-Week Change Map



Drought Change Since Last Week



Source(s): NDMC, NOAA, USDA; image courtesy of Drought.gov

Data Valid: 12/05/23



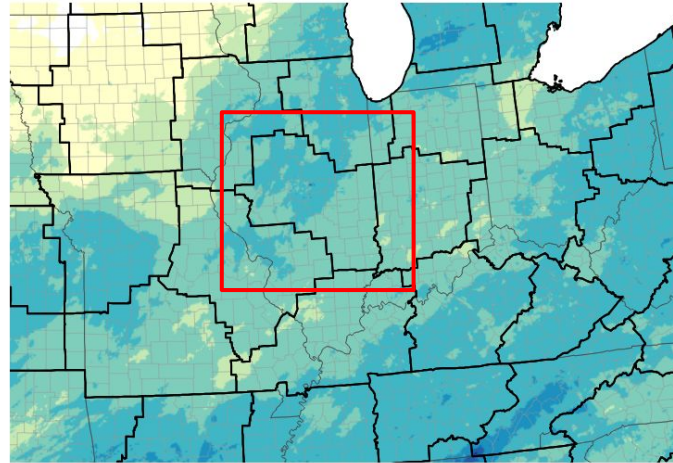


Precipitation

Last 30 days

- Rainfall from Nov. 8 to Dec. 8 has been generally below normal, and far below normal in southeast and east central IL where 25-50% of normal precipitation fell.

30-Day Precipitation Accumulations (Inches)



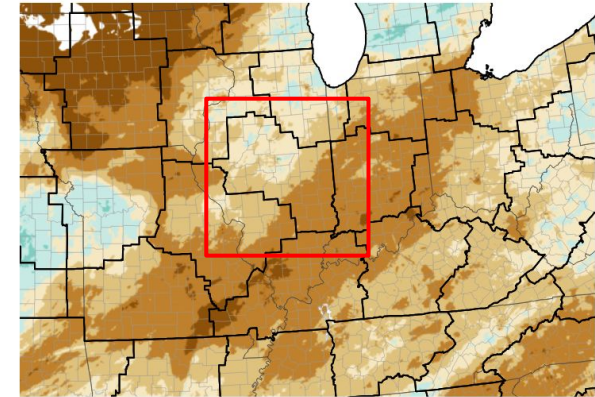
Inches of Precipitation



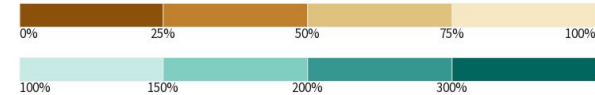
Source(s): National Weather Service Multi-Radar Multi-Sensor System; image courtesy of Drought.gov

Last Updated: 12/08/23

30-Day Percent of Normal Precipitation



Percent of Normal Precipitation (%)



Source(s): National Weather Service Multi-Radar Multi-Sensor System; image courtesy of Drought.gov

Last Updated: 12/08/23





Summary of Impacts

Links: See/submit [Condition Monitoring Observer Reports \(CMOR\)](#) and view the [Drought Impacts Reporter](#)

Hydrologic Impacts

- Low streamflows and slightly below normal reservoir levels

Agricultural Impacts

- There are no known impacts at this time

Fire Hazard Impacts

- There are no known impacts at this time

Other Impacts

- There are no known impacts at this time

Mitigation Actions

- None reported

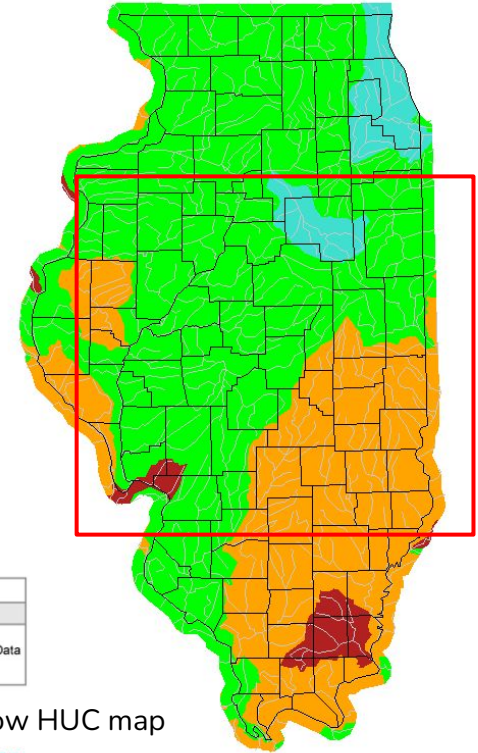




Hydrologic Conditions and Impacts

- Streamflows are below 25th percentile in southeast and east central IL, as well as west central IL.
- Lake Shelbyville has slightly below normal water level (0.87 foot below normal), while other large water sources such as Lake Springfield and Lake Decatur have slightly above normal water levels for this time of year.

Thursday, December 07, 2023



Explanation - Percentile classes							
Low	<10	10-24	25-75	76-90	>90	High	No Data
	Much below normal	Below normal	Normal	Above normal	Much above normal		

Image Caption: USGS 7 day average streamflow HUC map valid December 7, 2023.

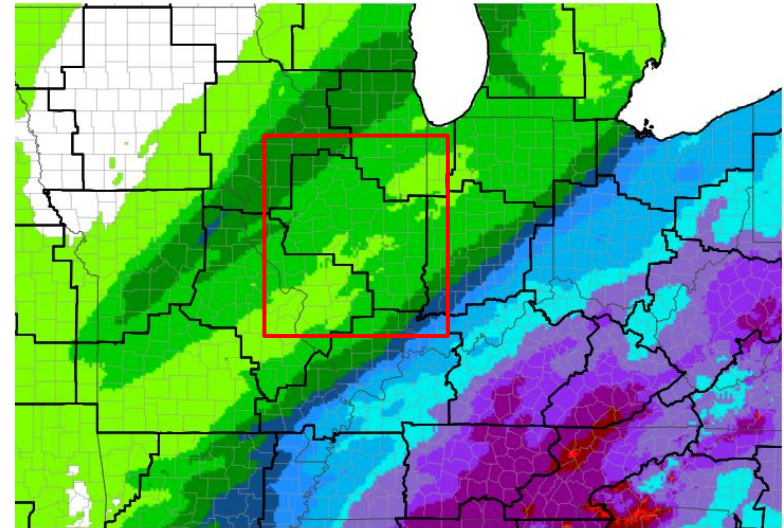




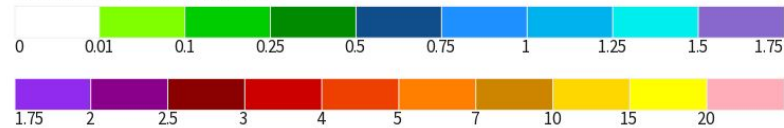
Seven Day Precipitation Forecast

- Rainfall is expected to be minimal during the upcoming 7 days, and will mainly be by Saturday December 9
- Most Moderate and Severe Drought areas are likely to see less than a quarter inch of rain

7-Day Quantitative Precipitation Forecast



Predicted Inches of Precipitation



Source(s): National Weather Service Weather Prediction Center; image courtesy of Drought.gov

Data Valid: 12/08/23

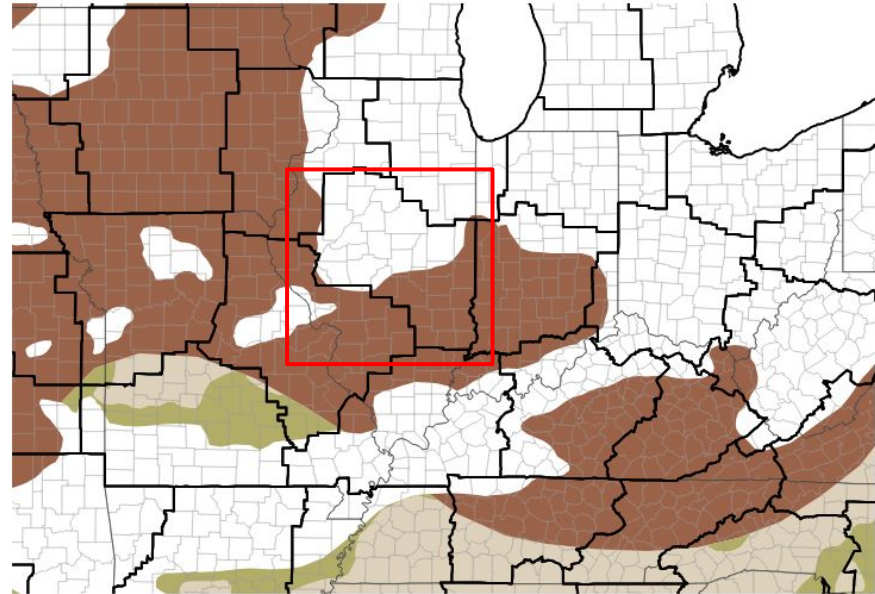




Drought Outlook

The latest monthly and seasonal outlooks can be found on the [CPC homepage](#)

- Drought conditions are likely to persist in east-central and southeast IL, as well as west-central IL this month



Drought Is Predicted To...



Image Caption:

Climate Prediction Center Monthly Drought Outlook Released November 30, 2023 valid for December 2023

Links to the latest:

[Climate Prediction Center Monthly Drought Outlook](#)

[Climate Prediction Center Seasonal Drought Outlook](#)

