

[NWS Weather Planning Products for Spotters](#)

- 1) **Daily Weather Story** – An excellent place to start planning. It is a graphical depiction of the main weather concerns for the next few days (see image below). This product will help you highlight what areas of central or eastern Illinois are anticipating hazardous weather.

Forecast Discussion
Local Area
Activity Planner
Aviation Weather
Fire Weather
Severe Weather
Winter Weather
Hydrology
Rivers & Lakes
Climate
Local
National
Drought
More...
Weather Safety
Preparedness
Weather Radio
StormReady
SkyWarn
Additional Info
Other Useful Links
Education Resources
Coop Observer
Top News Archives

Latest Conditions in Springfield, IL
Mar 31 10:52 am 69°F (21°C)
A Few Clouds
Weather Story
Radar
Satellite

From our main website (www.weather.gov/Lincoln) click on the thumbnail

Today and Tonight
Moline 45/41
Peoria 50/48
Champaign 51/50
Springfield 55/53
Saint Louis 63/58
Numbers are highs/lows today and tonight.
MUCH WARMER!
Chance of rain today and this evening. Steady rain developing after midnight. Flash Flood Watch after midnight through Saturday.
Last Updated: 3:54 AM CST

Saturday and Saturday night
Moline 47/24
Peoria 55/26
Champaign 62/28
Springfield 58/27
Saint Louis 62/30
Near record highs
SEVERE
Showers and thunderstorms with heavy rainfall. Flash Flooding possible. Strong to severe storms southeast of Shelbyville to Paris. Near record highs on Sat.

To go directly to the product: <http://www.crh.noaa.gov/wxstory.php?site=ilx>

- 2) **Top News of the Day** – At the very top of the NWS webpage, this section links to highlights of hazardous weather.



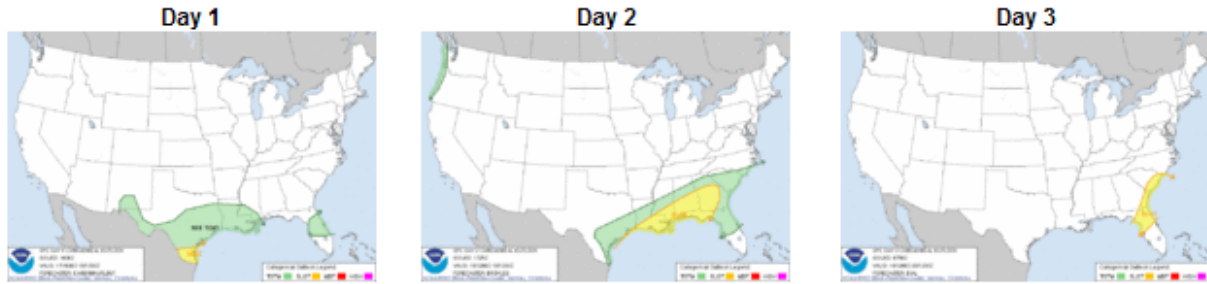
- 3) **Hazardous Outlooks** – This page contains graphical outlooks for severe storms, heavy rainfall, winter weather, drought and fire weather conditions. There are also links to text products, including the NWS Lincoln *"Hazardous Weather Outlook"*.



Access to the "Outlooks" page is from the main website, under the "Current Hazards" menu (see the yellow box above)

Severe Weather

● [Latest Local Hazardous Weather Outlook](#)



Mesoscale Discussion

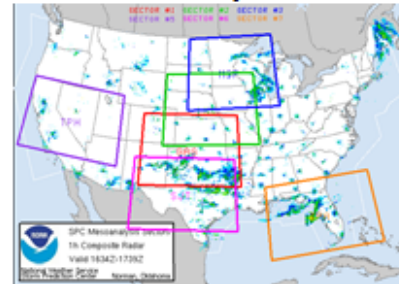


SPC Activity Chart



Showing a 1 hour radar loop, the current Day 1 convective outlook, and all active watches.

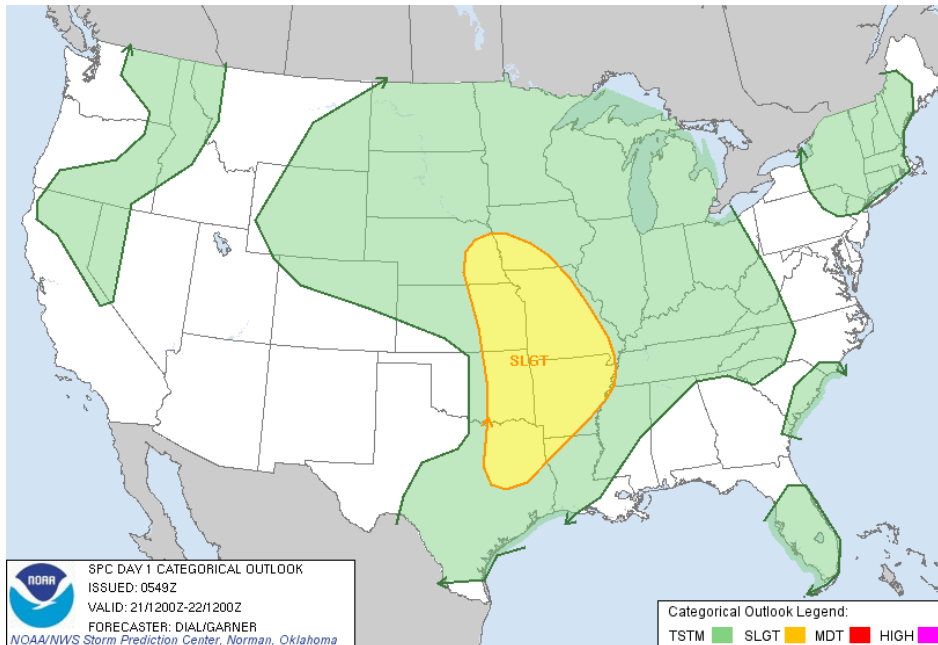
SPC Mesoanalysis Chart



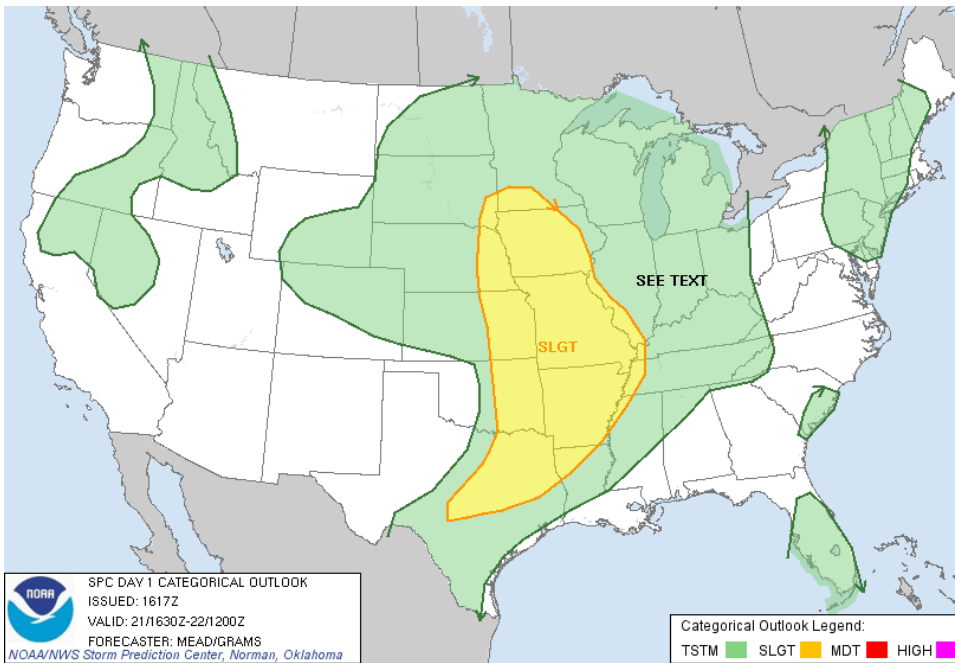
Click on the image for a detailed look at severe weather parameters for various sectors across the county.

Severe Weather Section of the "Outlooks" page

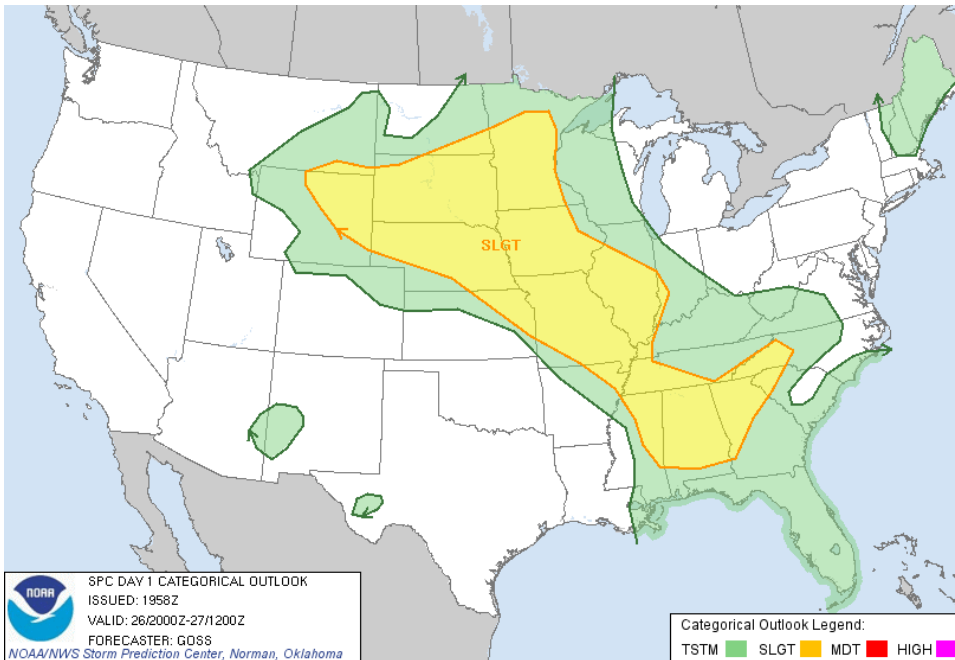
Day 1 – 3 Storm Prediction Center Convective Outlooks – Levels of Risk



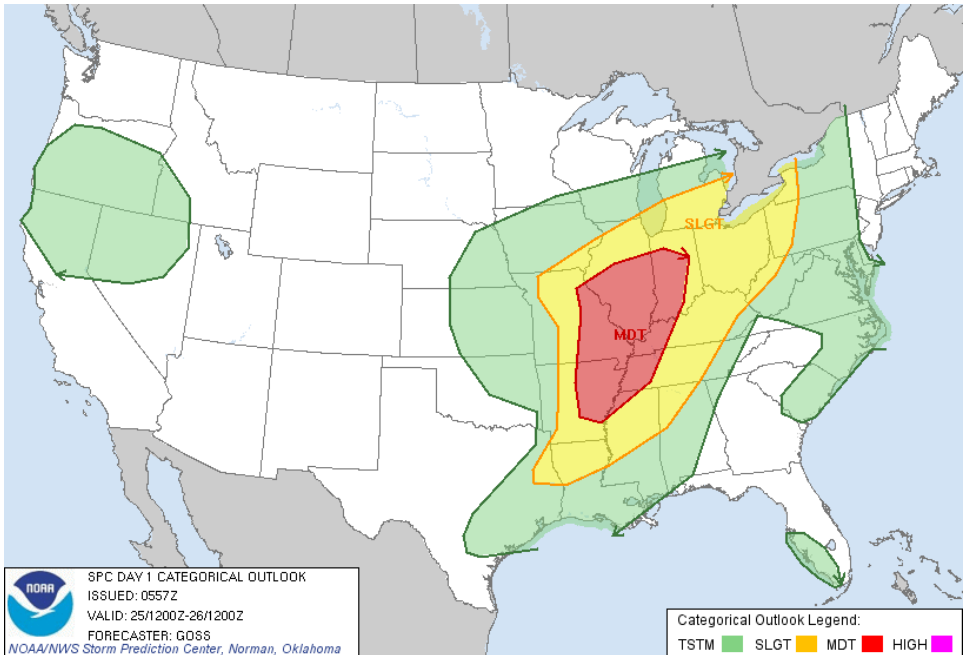
Light Green: General Thunderstorm – Thunderstorms are expected, but severe weather is not anticipated.



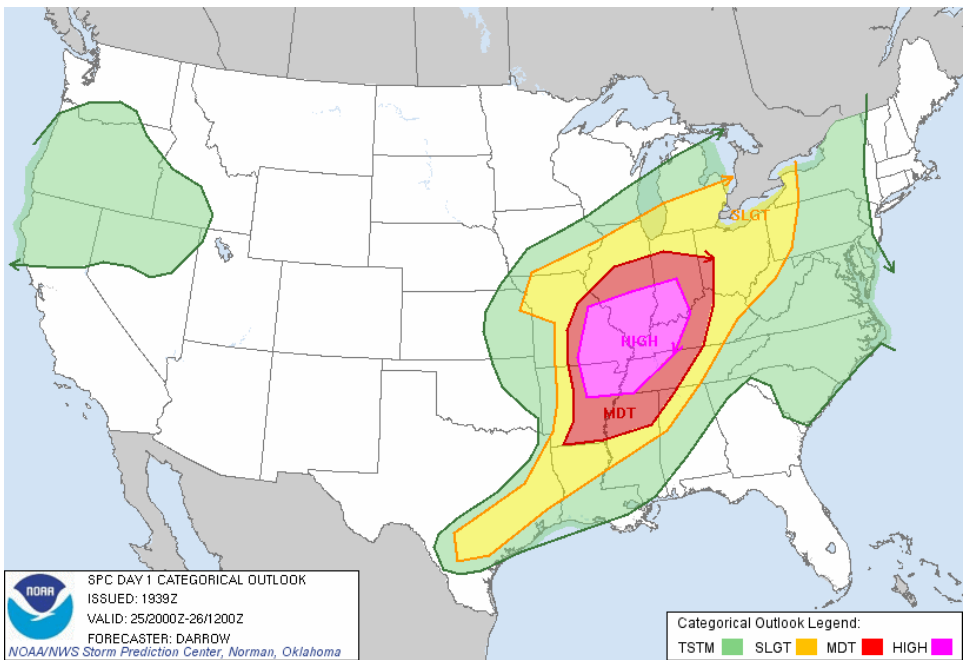
Light Green: General Thunderstorm with “See Text” – Thunderstorms are expected. Read the SPC discussion because if conditions change, the risk level may be increased, or isolated strong to severe storms are possible.



Yellow: SLIGHT RISK – Well organized severe thunderstorms are expected, but in small numbers and/or low areal coverage.



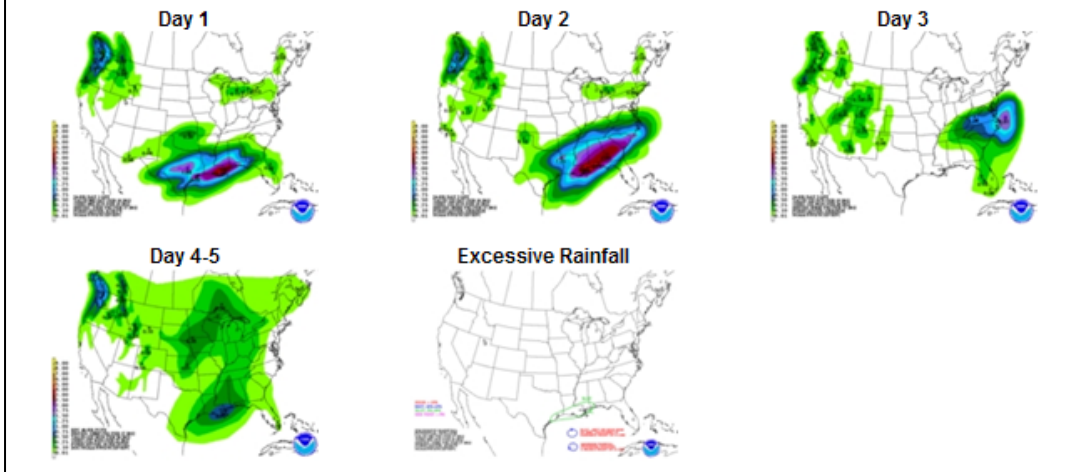
Red: MODERATE RISK – A greater concentration of severe storms is expected, with storms and associated severe weather more intense.



Pink: HIGH RISK – A “MAJOR” severe weather outbreak is expected, with either a concentration of strong tornadoes – or an enhanced likelihood of a long-lived damaging wind event with potential of 80+ mph wind gusts and structural damage.

Rainfall

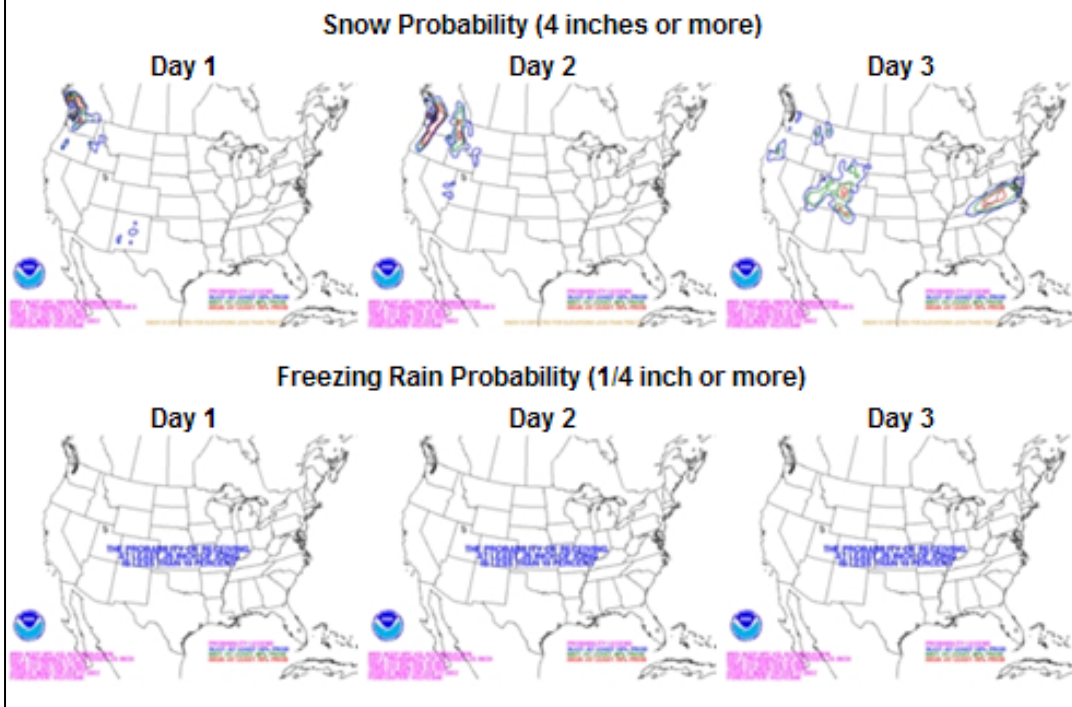
- [Latest Local Hydrologic Outlook](#)
- [Days 1-3](#)
- [Excessive rainfall](#)



Forecast Rainfall Section of the "Outlooks" page

Winter

- [Heavy snow discussion](#)



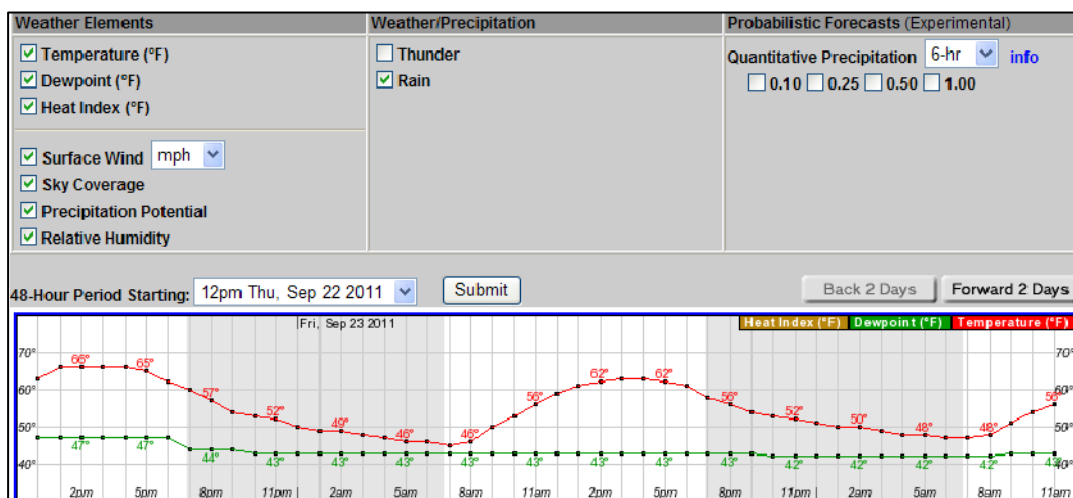
Forecast of Snow and Freezing Rain Section of the "Outlooks" page

- 4) **Multimedia Weather Briefing** – This is a recorded presentation, about 2-4 minutes in length, which uses graphics and an verbal discussion prior to high impact severe weather, flooding and winter weather events. These are updated twice daily by 5 AM and 5 PM.



This is accessed from the “Top News of the Day” section, or you can access it directly by going to the following link: (<http://www.crh.noaa.gov/ilx/?n=webbriefing>)

- 5) **Detailed Forecasts – “Hourly Weather Graph” and “Tabular Forecast”** – These are hourly forecasts, out to 7 days, for weather elements you choose at the top of each page. First, from main web page, click on the location you are interested in on the map. Scroll down, and on the right side under “Additional Forecasts & Information” select either the **Hourly Weather Graph** or the **Tabular Forecast**.



Example of the Hourly Weather Graph for a 48 hour period. Click on “Forward 2 Days” to see the next 48 hour period.

Weather Elements		Weather/Precipitation		Probabilistic Forecasts (Experimental)																				
<input checked="" type="checkbox"/> Temperature (°F)		<input type="checkbox"/> Thunder		Quantitative Precipitation <input type="text" value="6-hr"/> info																				
<input checked="" type="checkbox"/> Dewpoint (°F)		<input checked="" type="checkbox"/> Rain		<input type="checkbox"/> 0.10	<input type="checkbox"/> 0.25																			
<input type="checkbox"/> Heat Index (°F)				<input type="checkbox"/> 0.50	<input type="checkbox"/> 1.00																			
<input checked="" type="checkbox"/> Surface Wind <input type="text" value="mph"/>																								
<input checked="" type="checkbox"/> Sky Coverage																								
<input checked="" type="checkbox"/> Precipitation Potential																								
<input checked="" type="checkbox"/> Relative Humidity																								
48-Hour Period Starting: <input type="text" value="12pm Thu, Sep 22 2011"/>		<input type="button" value="Submit"/>		<input type="button" value="Back 2 Days"/> <input type="button" value="Forward 2 Days"/>																				
Date	09/22											09/23												
Hour (CDT)	12	13	14	15	16	17	18	19	20	21	22	23	00	01	02	03	04	05	06	07	08	09	10	11
Temperature (°F)	63	66	66	66	66	65	62	60	57	54	53	52	50	49	49	48	47	46	46	45	46	50	53	56
Dewpoint (°F)	47	47	47	47	47	47	44	44	44	43	43	43	43	43	43	43	43	43	43	43	43	43	43	43
Wind (mph)	7	8	8	8	8	7	5	3	3	3	5	5	5	5	5	5	5	5	5	5	5	6	6	6
Wind Dir	W	W	W	W	W	W	WNW	NW	NNW	N	N	N	N	N	N	N	N	N	N	N	N	NNW	NNW	NNW
Gust																								
Sky Cover (%)	58	61	60	59	59	60	61	71	70	68	66	64	62	61	60	59	58	57	56	55	55	55	55	55
Popn. Potential (%)	10	10	10	10	10	10	10	14	14	14	14	14	14	14	14	14	14	14	14	20	20	20	20	20
Rel. Humidity (%)	57	51	51	51	51	53	58	55	62	69	69	71	77	80	80	83	86	89	89	92	88	78	68	61
Rain	--	--	--	--	--	--	--	--	--	--	--	--	--	--	--	--	--	--	--	SChc	SChc	SChc	SChc	SChc

Example of the Tabular Forecast for a 48 hour period. Click on "Forward 2 Days" to see the next 48 hour period.

- 6) **Severe Weather Warnings & Statements in Effect** – This is another link found in our "Top News of the Day" section of the web page. This will appear anytime there severe weather warnings or statements in effect in or near central & southeast Illinois.

The screenshot shows the NWS website interface. At the top, there are navigation links: Home, Site Map, News, Organization, and a search bar. Below these is the "Top News of the Day" section, which is circled in red. It contains several links: "Warning and Statement Products are in Effect", "The Dangers of Summer Heat", "Summer Newsletter Now Available (PDF, 1.0 MB)", and "July 2010 Central IL Summary". Below the news section are tabs for "Watches & Warnings", "Observations", "Forecast Graphics", "Rivers & Lakes", "Climate", and "Radar". The "Watches & Warnings" tab is selected, showing a map of Illinois with various weather warnings and advisories overlaid in different colors. A legend on the right side of the map identifies the colors: Flash Flood Warning (dark red), Excessive Heat Warning (pink), Flash Flood Watch (light red), Severe Weather Statement (orange), Flood Warning (yellow), Heat Advisory (light orange), Flood Advisory (light yellow), Hazardous Weather Outlook (pale yellow), and Severe Weather Statement (dark orange). The map also shows major cities and highways in Illinois. At the bottom of the map, it says "Last map update: Wed, Aug. 4, 2010 at 8:45:41 am CDT".

Example of “Warning and Statement Products are in Effect”. Clicking the **“Top News of the Day” for Warning and Statement Products in Effect** takes you to the **“Severe Weather Summary”** (see the image below). You can also get there by clicking on the **“Watches/Warnings”** link on the left hand menu (yellow box in image)

National Weather Service Central Illinois
Severe Weather Summary Page

Home Site Map News Organization

Watches, Warnings, Advisories (Click to zoom)

Read watches, warnings & advisories

Zoom Out

Radar and Satellite (Click for larger image)

Tornado Warning
 Severe Thunderstorm Warning
 Flood Warning
 Tornado Watch
 Flash Flood Watch
 Severe Weather Statement
 Flood Advisory
 Wind Advisory
 Flood Watch
 Special Weather Statement
 Hazardous Weather Outlook
 Short Term Forecast

Tornado Warning(s)
all or portions of the following counties, In Illinois: Logan, Sangamon, Washington
Severe Thunderstorm Warning(s)
all or portions of the following counties, In Illinois: Macoupin, Montgomery, Morgan, Sangamon
Flash Flood Warning(s)
 None

Last map update: Sun, Mar. 8, 2009 at 11:58:54 am CDT

Local Links: Hazardous Weather Outlook, Local Storm Reports

Region - National: Convective Outlooks, Mesoscale Discussions

Example of Severe Weather Summary page