

2025: A Year in Review

A very comprehensive look back on the weather of 2025 across central Indiana. The information is arranged in this order:

Annual and Seasonal Conditions

Miscellaneous Weather Stats

Records Tied or Broken in 2025

Links to Top Weather Stories of 2025

Central Indiana 2025 Climate Summary

Data prepared by the Indianapolis Weather Forecast Office's State Climate Team

Questions should be referred to nws.indianapolis@noaa.gov

Annual Climate Statistics for Indianapolis

JANUARY – DECEMBER 2025

	Average Temperature	Total Precipitation	Total Snowfall	Highs of 80/90 or higher	Lows of 32/0 or lower
2025	54.7	36.70"	31.6"	111/29	103/6
NORMAL (1991-2020)	53.7	43.63"	25.5"	101/20	106/3
2025 Difference from Normal	+1.0	-6.93"	+6.1"	+10/+9	-3/+3
All-Time Rank (1872-2025)	20th Warmest	Tied 43rd Driest	26th Snowiest		

*Snowfall data above is also for the calendar year period, January – December 2025

Seasonal Climate Stats for Indianapolis

Observed Values and Their Difference from Normal

2024-25 WINTER SEASON SUMMARY

DEC – JAN – FEB	Average Temperature	Total Precipitation	Total Snowfall	Highs of 32°F or Below	Lows of 0°F or Below
Winter 2024-2025	30.6	7.42	17.1	29	4
Normal Winter	31.4	8.47	21.2	26	3
Winter 2024-25 Diff From Normal	-0.8	-1.05	-4.1	+3	+1

Winter 23-24 Ranks: 55th Coldest (Tied) 47th Driest 60th Snowiest

2025 SPRING SEASON SUMMARY

MAR – APR – MAY	Average Temperature	Total Precipitation	Total Snowfall	Highs of 80°F or Higher	Lows of 32°F or Below
Spring 2025	55.3	15.22	0.1	10	16
Normal Spring	53.2	12.78	3.4	12	20
Spring 2025 Diff From Normal	+2.1	+2.44	-3.3	-2	-4

Spring 2025 Ranks: 13th Warmest 28th Wettest 10th Least Snowiest (Tied)

2025 SUMMER SEASON SUMMARY

JUN – JUL – AUG	Average Temperature	Total Precipitation		Highs of 90°F or Higher	Lows of 70°F or Higher
Summer 2025	76.1	9.83		29	43
Normal Summer	74.3	12.57		17	22
Summer 2025 Diff From Normal	+1.8	-2.74		+12	+21

Summer '24 Ranks: 20th Hottest (Tied) 54th Driest

2025 FALL SEASON SUMMARY

SEP – OCT – NOV	Average Temperature	Total Precipitation	Total Snowfall	Highs of 80°F or Higher	Lows of 32°F or Below
Fall 2025	57.9	6.57	3.3	29	10
Normal Fall	55.6	9.81	0.9	17	15
Fall 2025 Diff From Normal	+2.3	-3.24	+2.4	+12	-5

Fall 2025 Ranks: 16th Warmest (Tied) 42nd Driest (Tied) 20th Snowiest (Tied)

WINTER 2025-26 SUMMARY SO FAR

DEC 2025	Average Temperature	Total Precipitation	Total Snowfall	Highs of 32°F or Below	Lows of 32°F or Below
December 2025	32.1	2.39	11.8	11	23
Normal December	33.3	2.92	6.4	7	23
December Diff. From Normal	-1.2	-0.53	+5.4	+4	0

December 2025 Ranks: 69th Coldest 60rd Driest (Tied) 13th Snowiest

Miscellaneous 2025 Climate Data for Indianapolis

Date of Final Spring Frost:	April 16
Date of Final Measurable Spring Snow:	March 6 (0.1")
Date of First Fall Frost:	October 23
Date of First Measurable Fall Snow:	November 9 (0.5")
Highest Max Temperature:	95 (July 29)
Lowest Min Temperature:	-4 (December 14 & 15)
Lowest Max Temperature:	7 (December 14)
Highest Min Temperature:	77 (June 24)
Greatest Daily Rainfall:	2.46" (April 4)
Greatest Daily Snowfall:	5.4" (December 13)
Wettest 7-day period:	6.36" (March 30 - April 5)
Longest period held below freezing:	8 days (January 4-11)
Longest period with highs of 90°F+:	8 days (June 21-28)
Longest period w/measurable precipitation:	5 days (April 4-6, June 5-9, September 21-25)
Longest period w/no measurable precipitation:	10 days (October 8-17)

Records Tied/Broken at Indianapolis in 2025

DATE	RECORD TYPE	NEW	OLD	YEAR
February 3	Maximum Temperature	68	67	2020
March 29	High Minimum Temp	61	60	1910
April 2	Maximum Temperature	81	[Tied]	2010
April 4	Daily Precipitation	2.46"	1.48"	1952
November 10	Daily Snowfall	1.3"	0.2"	1943
November 29	Daily Snowfall	1.7"	1.6"	1942
December 14	Minimum Temperature	-4	[Tied]	1901
December 14	Low Maximum Temp	7	9	1963
December 28	Maximum Temperature	67	65	1984

Top 2025 Weather Events

[January 5-6: Winter Storm Brings 6-13" of Snow to Central/Southern Counties](#)

[January 10: Additional Moderate Snowfall](#)

[March 15: Multiple Tornadoes and Widespread Wind Damage](#)

[March 19: Severe Storms with Wind Damage, Large Hail, and EF2 Tornado](#)

[March 30: Damaging Winds and Large Hail](#)

[April 2: Multiple Tornadoes and Widespread Wind Damage](#)

[Early April: Heavy Rain and Flooding](#)

[April 19: Severe Storms with Damaging Winds](#)

[April 29 and 30: Severe Storms with Damaging Winds and Large Hail](#)

[May 13: Randolph County Landspout Tornado](#)

[May 16: Multiple Tornadoes Along With Large Hail](#)

[June 18: Severe Storms With Widespread Wind Damage](#)

[July 16: Brief Tornado In Jackson County](#)

[August 16/17: Severe Storms With Damaging Winds](#)

[November 9-10: Early Season Lake-Enhanced Snowfall](#)

[November 29: Early Winter Storm Brings Up To 8 Inches of Snowfall](#)

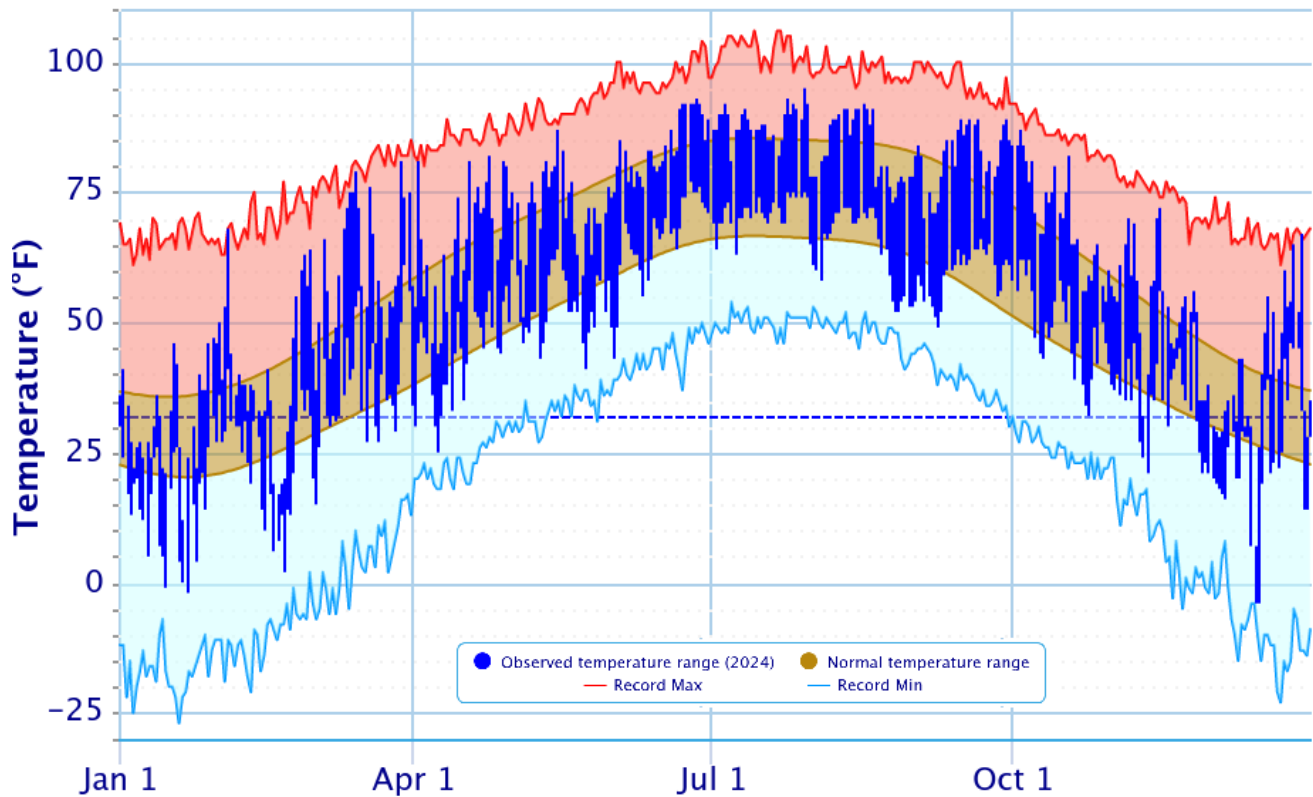
[December 1-2: Widespread Moderate Snowfall, With Locally 5-7 Inches](#)

[December 11-15: Two More Snow Events Then Record Cold](#)

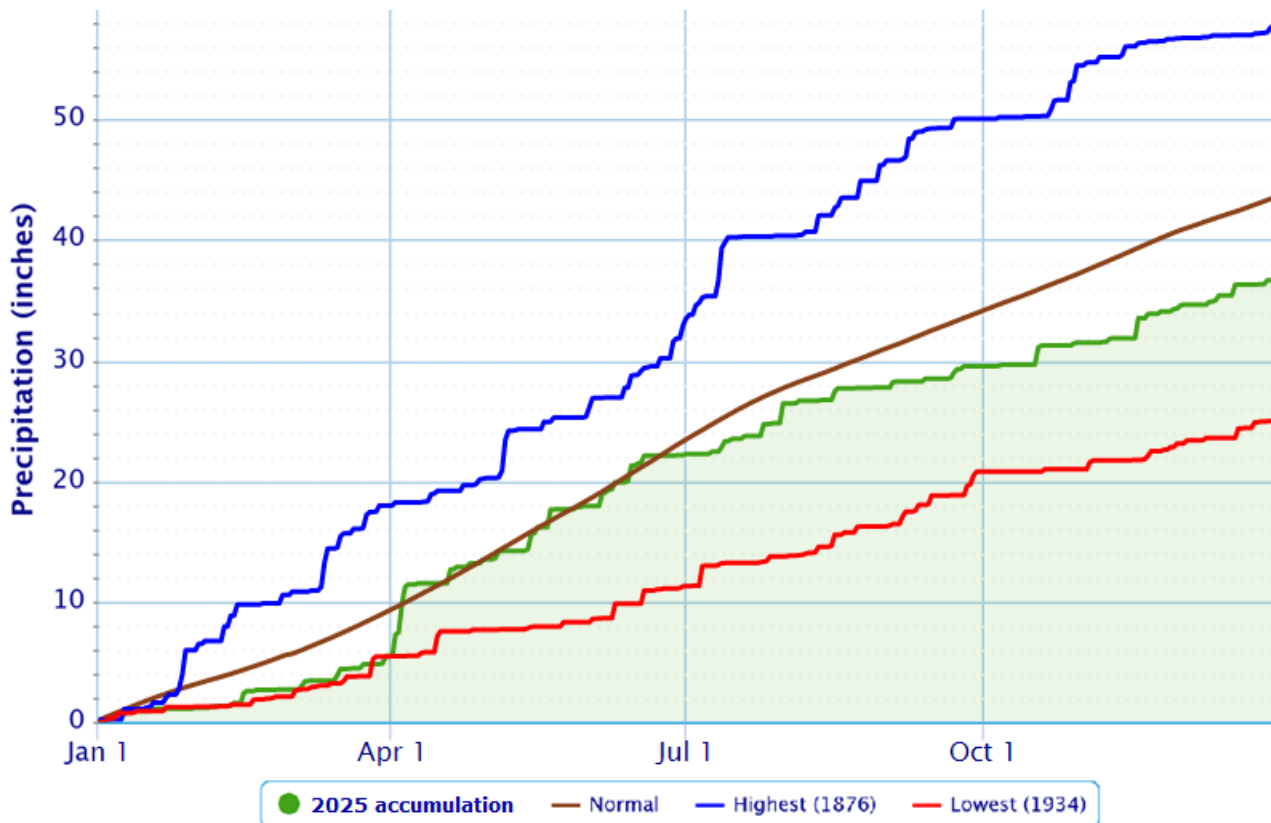
[December 28: Linton EF1 Tornado](#)

Daily Temperature Data – Indianapolis Area, IN

Period of Record – 1871-02-10 to 2025-12-31; Normals period: 1991-2020

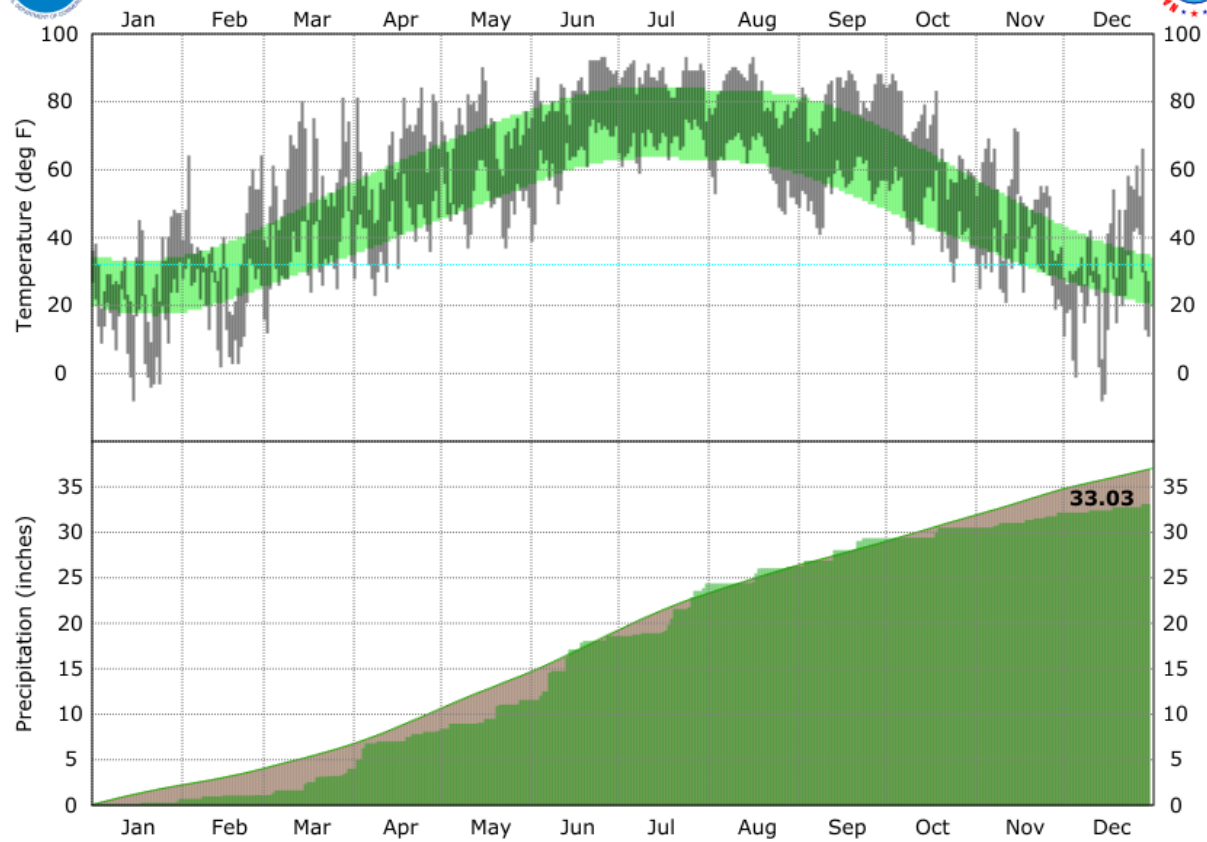


Accumulated Precipitation – Indianapolis Area, IN

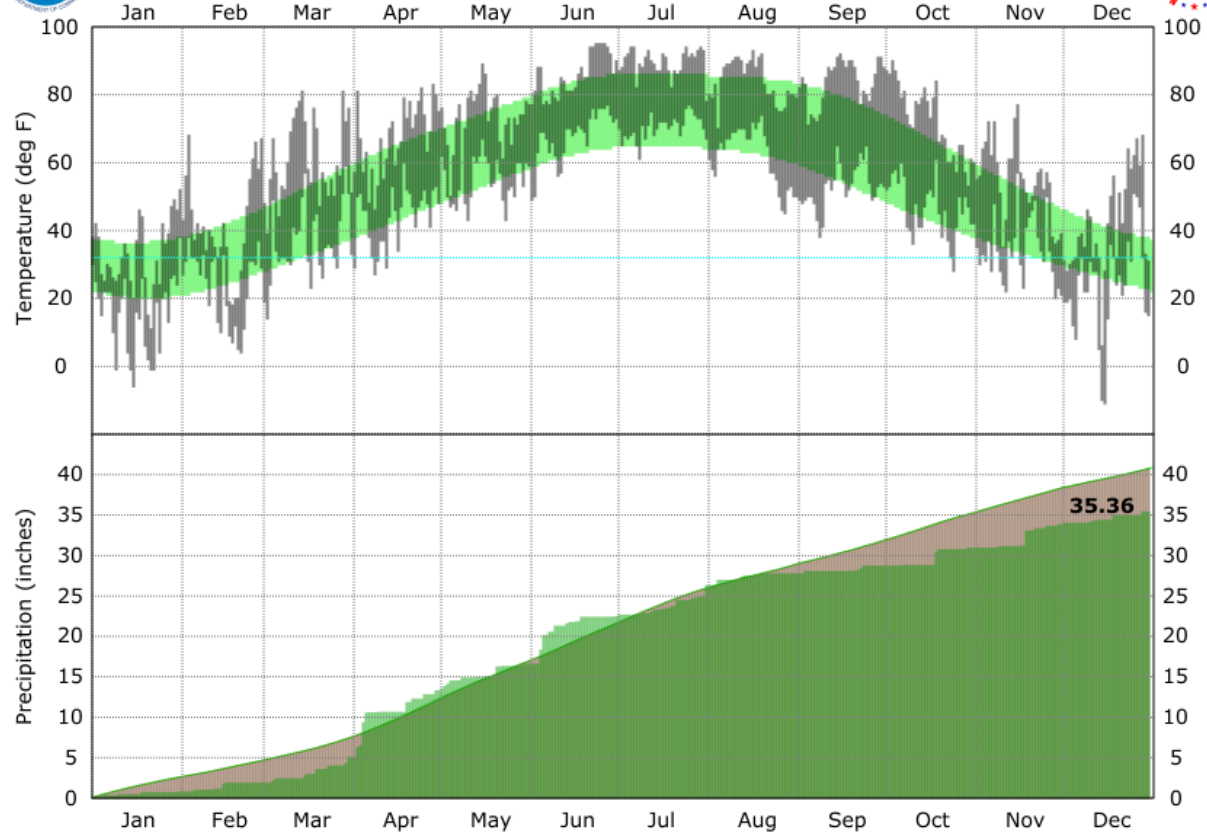




Lafayette IN - 2025

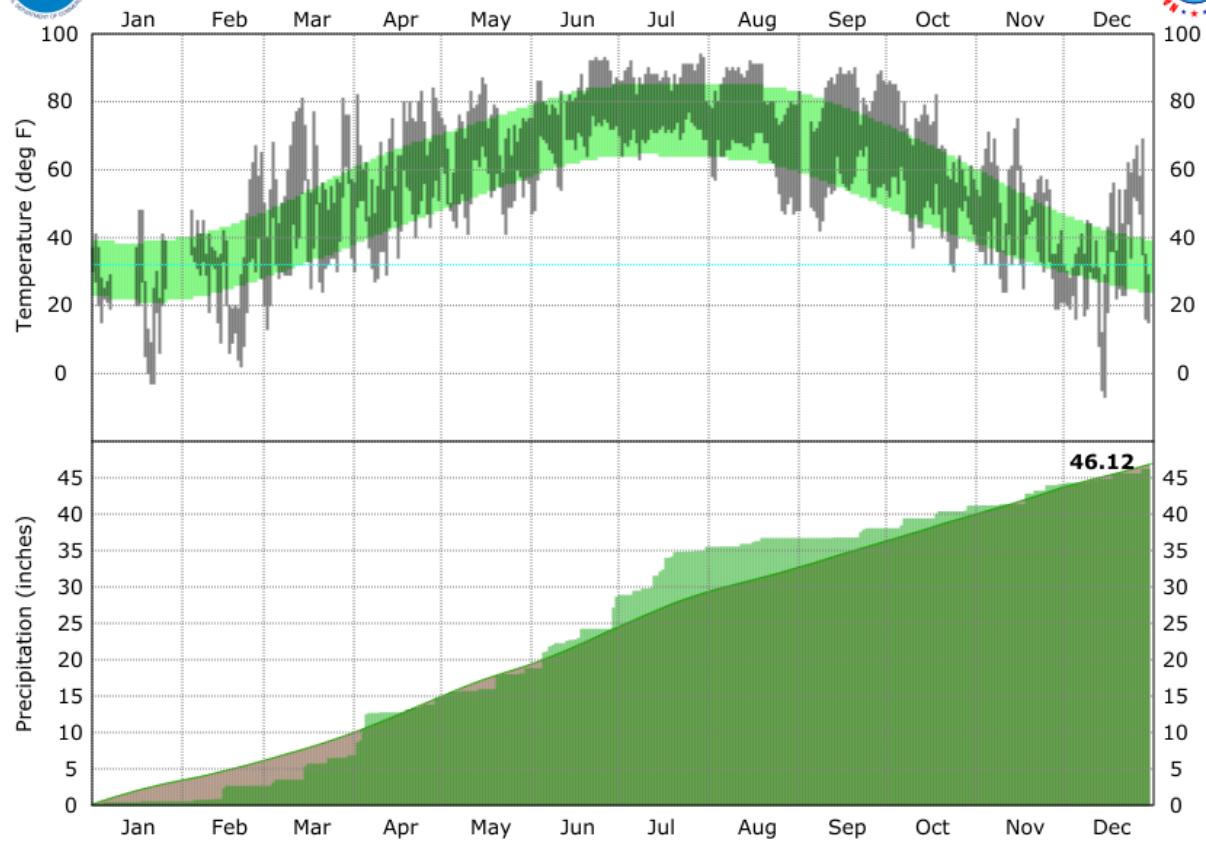


Terre Haute IN - 2025

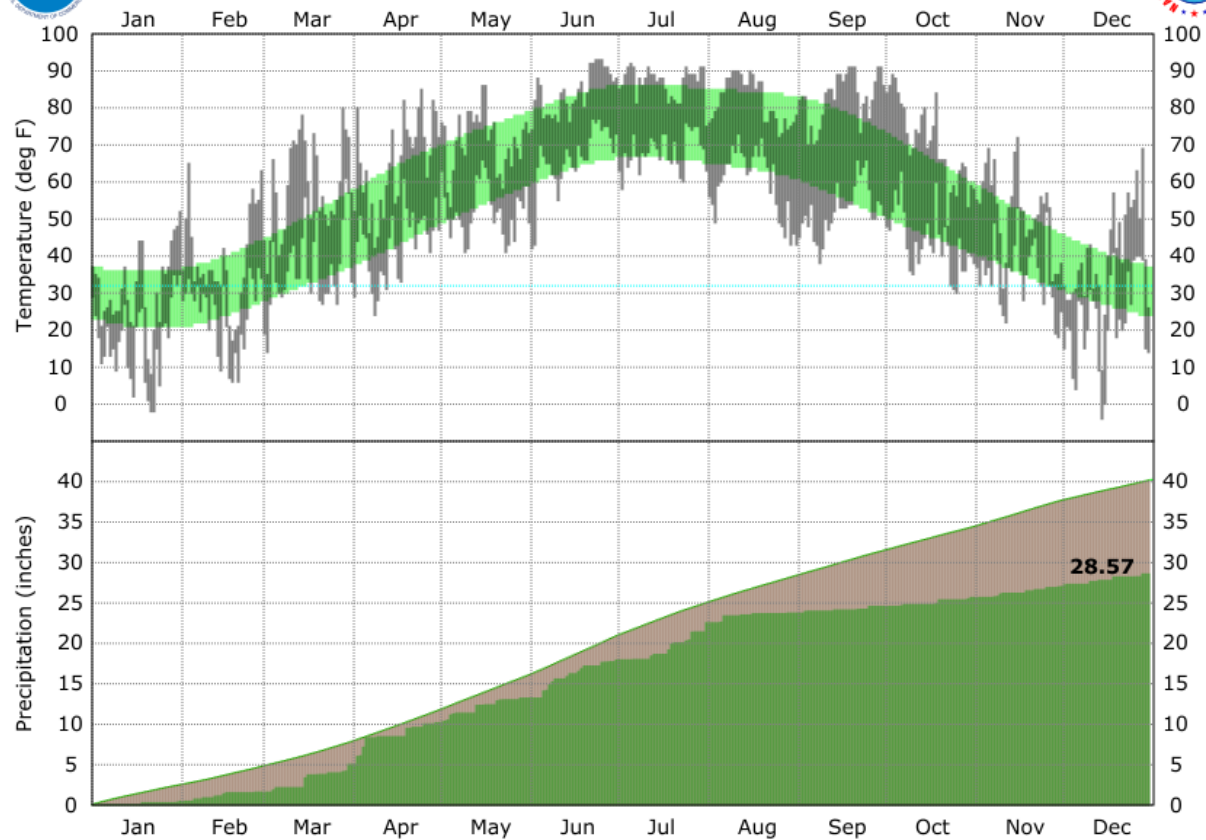




Bloomington IN - 2025

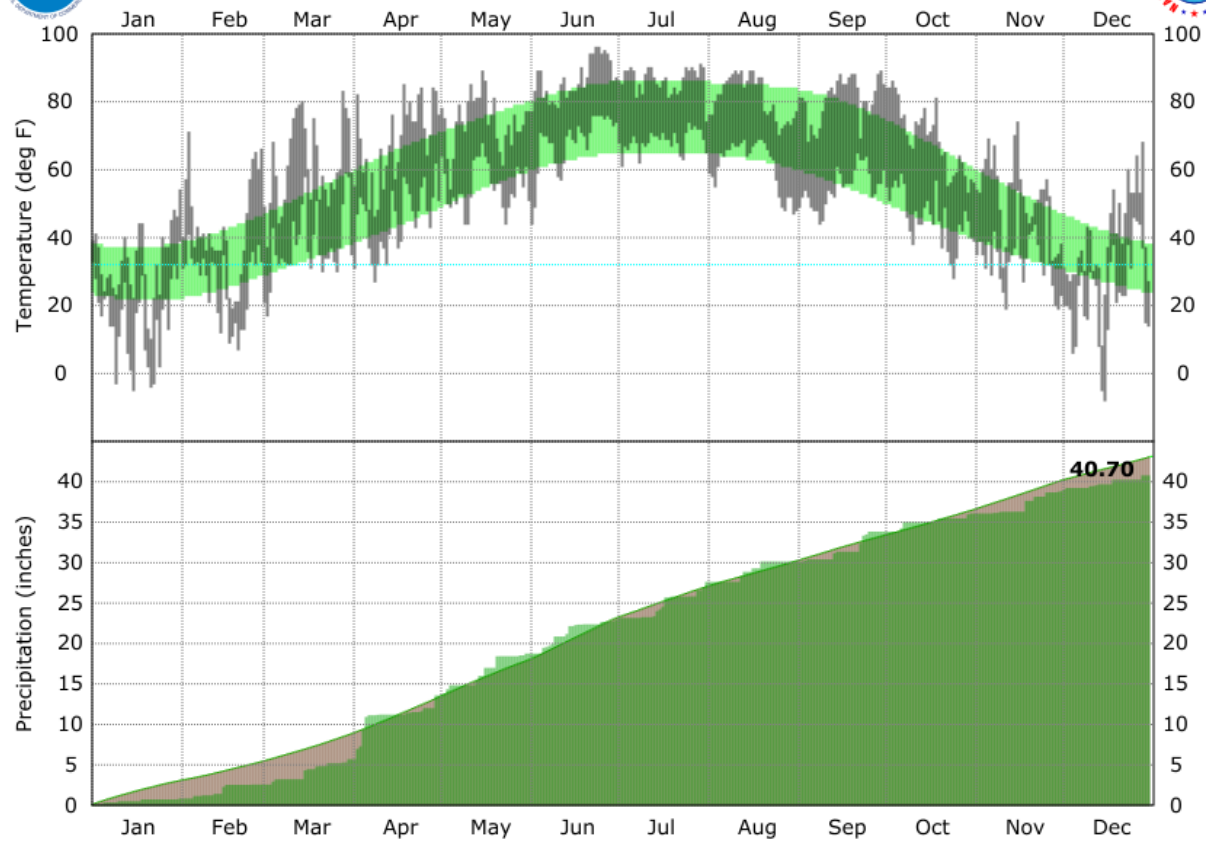


Muncie IN - 2025

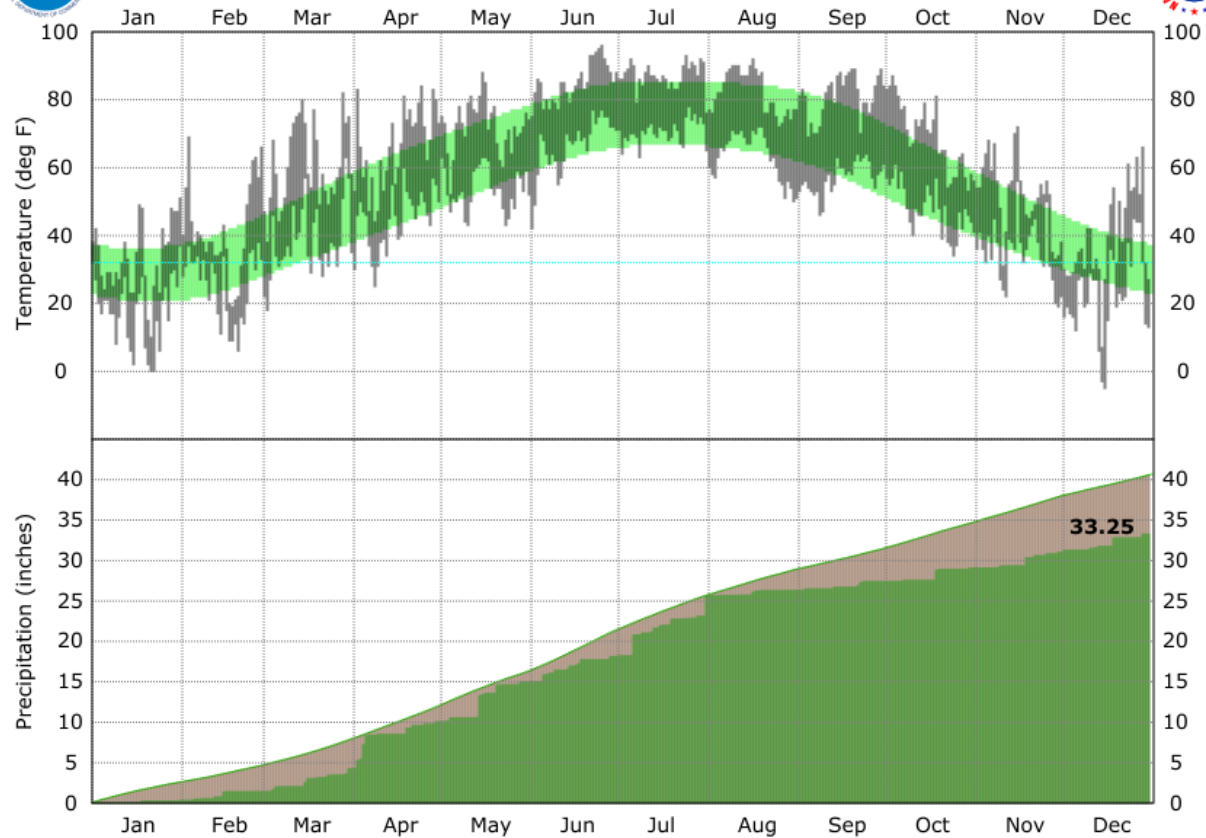




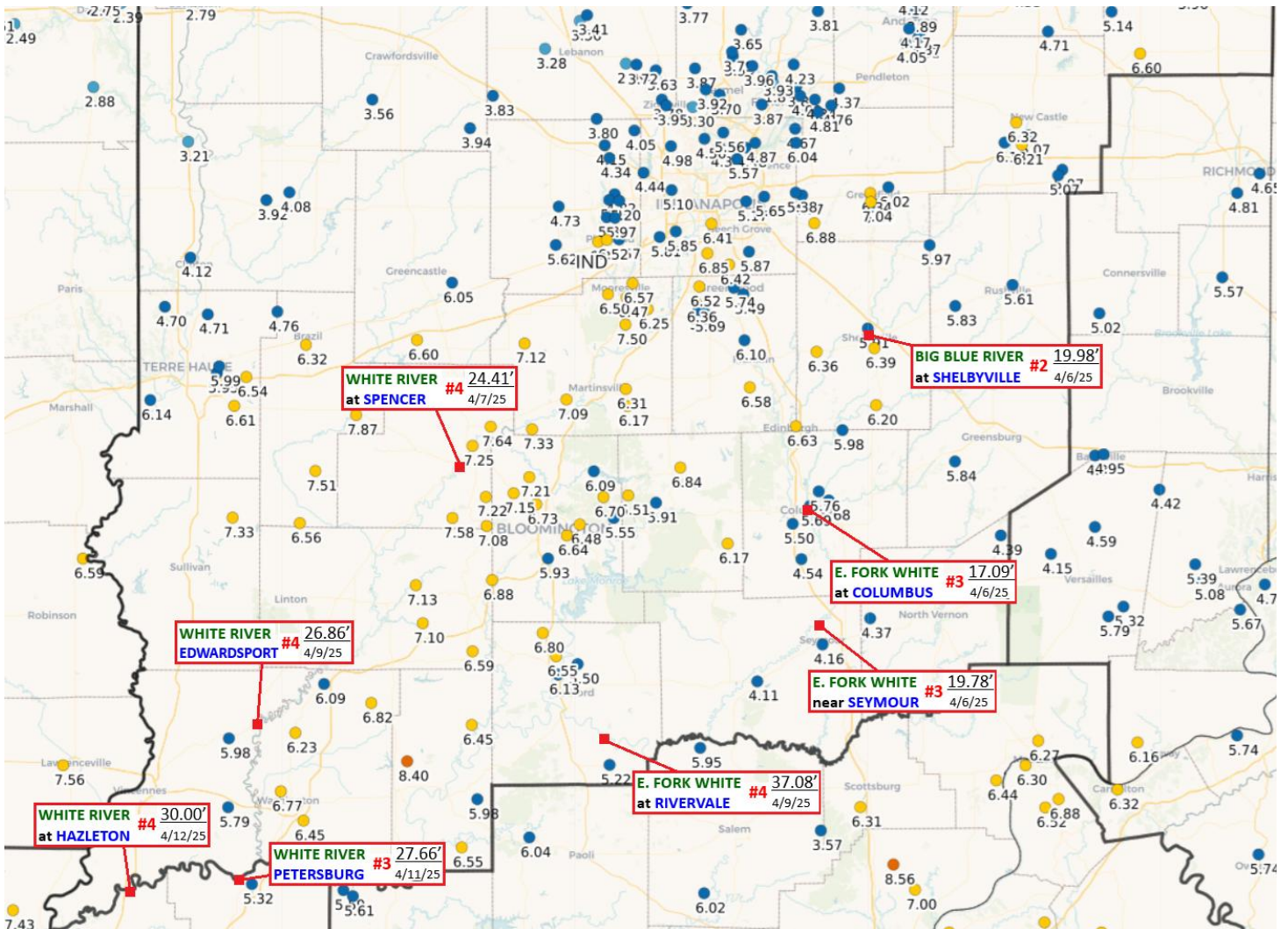
Shelbyville IN - 2025



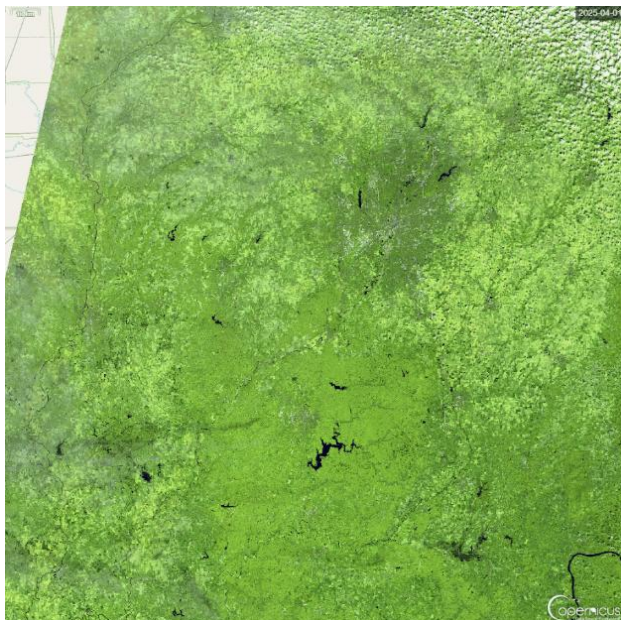
Eagle Creek Airpark IN - 2025



Central Indiana Significant/Major Flooding – April 2025



4.3-DAY TOTAL RAINFALL OBSERVATIONS from 4/1/25 1100 PM -to- 4/6/25 700 AM EDT;
EIGHT SUPERIMPOSED BOXES note MAJOR RIVER FLOODING CREST STAGE LEVELS and CORRESPONDING **ALL-TIME RANK**



IMAGERY OF REGION **BEFORE** (Left, 4/1/25) ... **AND AFTER** HEAVY RAINFALL amid FLOODING (Right, 4/8/25)