



# Weather-Ready Nation

National Oceanic and Atmospheric Administration



## Sheltering & Hunker Down

The outer rainbands have begun and the wind is picking-up outside. Everyone is in the chosen safe place to ride out the storm. What are you supposed to do while inside? How else can you stay safe as conditions worsen and the peak of the storm nears?

### WATCHES & WARNINGS

Tropical Storm & Hurricane watches and warnings alert of the wind threat. Storm Surge watches and warnings alert to the storm surge risk. If you are in a storm surge zone, you may need to evacuate to a safer location out of the storm surge threat zone. Heed local official evacuation guidance.

#### WATCH

Conditions Possible  
Complete  
Preparations  
Evacuate or be  
ready to evacuate

#### WARNING

Conditions Expected  
Stay Sheltered  
Listen for alerts to  
'Hunker Down' within  
your shelter

### SHELTERING

- **REMAIN INDOORS** – do not venture outside even during wind lulls
- Remain away from windows, doors & exterior walls
- Shelter away from where large trees could fall into/onto the structure
- Monitor for tornado, flash flood & extreme wind warnings

### HUNKER DOWN WITHIN SHELTER



1. Go to an interior room away from windows & doors
2. If helmets, blankets & pillows are available, use them.
3. Remain hunkered down until the wind threat passes.
4. Be cautious of damage as you leave your interior room.

### Did You Know?

Extreme Wind Warnings are issued when the eyewall of a MAJOR hurricane makes landfall. Respond as if you were sheltering from a tornado.



**Move AWAY from  
WATER Risks**



**Hide from the  
WIND Risks**



National Weather Service

National Hurricane Center  
**hurricanes.gov**

SCAN WITH PHONE



Download  
the free  
**FEMA**  
App



1. Scan the QR Code with your Phone or go to <https://tinyurl.com/2mzwn9ft>
2. Choose Phone App Type (Google or Apple)
3. Download the free FEMA App
4. Add your Location - Receive Weather Alerts, Shelter Information & Preparation Guidance

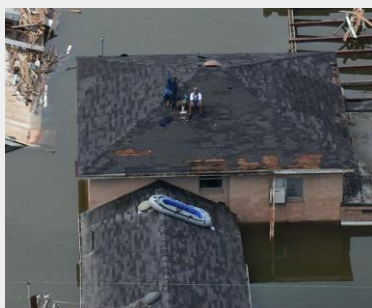


[www.ready.gov/hurricanes](http://www.ready.gov/hurricanes)

## Vertical Evacuation

If you remain in a flood prone or storm surge prone location and water begins to enter your shelter, you will need to vertically evacuate. This means going higher in your structure upstairs or into the attic.

This is a life-threatening situation. In addition to drowning risk, bacteria and other harmful objects can be in flood water.



1. **Go to a higher level in your structure.**
2. **Keep an axe in the attic**
3. **You may be isolated for an extended period of time.**

## Shelter Considerations

**Consider other options first before evacuating to a community shelter:** Only basic necessities may be provided. Bring only medical and personal items. Check in advance if pet friendly. While inside, remain away from windows, doors & exterior walls.

**Register if you need Shelter Assistance:** If you or a loved one relies on medical support or needs assistance evacuating, each county has a special medical needs registry for evacuation & shelter assistance. In Florida, register here for evacuation assistance: [snr.flhealthresponse.com](http://snr.flhealthresponse.com)

**Older Adults & Special Needs:** Wear a medical alert bracelet or pendant to help first responders treat you properly. Make others aware of how to access your home including the location of medical supplies, medication & lifesaving equipment. If deaf/hard of hearing, have devices to help you communicate, extra hearing aid batteries and label your supplies in Braille.

