



# Weather-Ready Nation

National Oceanic and Atmospheric Administration

## SEASONAL READINESS & MONITORING THE TROPICS

### WHAT IS A TROPICAL CYCLONE?

The term “tropical cyclone” includes tropical depressions, tropical storms, and hurricanes. These systems are categorized based on the cyclone’s maximum sustained wind speed; however, there are a multitude of additional hazards associated with these systems pose.



### DAMAGING WIND HAZARDS

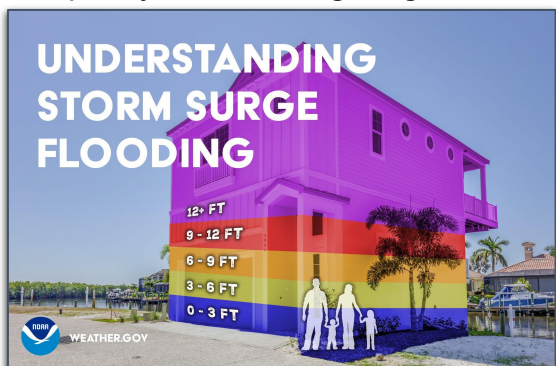
Tropical cyclone winds and tornadoes can cause long lasting impacts, including power loss, as well as extensive building and infrastructure damage.

### WATER HAZARDS

Dangerous rip currents and high surf can lead to very dangerous conditions well-ahead of a storm.

Storm surge is the top reason for the need to evacuate from tropical cyclones, posing a significant threat to life and property. Storm surge forecasts are given in height above normally dry ground.

Tropical rainfall can bring life-threatening flash flooding hundreds of miles inland. Flash flood warnings indicate the need to quickly shelter to higher ground.



#### Know your Evacuation Zone:

Visit this website and find your county evacuation zone:

[floridadisaster.org/knowyourzone/](http://floridadisaster.org/knowyourzone/)

When local officials request evacuation of your zone during a threatening tropical storm or hurricane, **EVACUATE** to a storm shelter, hotel, or to a family or friend’s home. Make your plan now – do not forget planning for your pets & livestock.

**Register for Shelter Assistance:** If you or a loved one relies on medical support or needs assistance evacuating, each county has a special medical needs registry for evacuation & shelter assistance. In Florida, register here for evacuation assistance:

<https://www.floridadisaster.org/snr/>

**Medical Supply Availability:** In addition to food & water, have enough medicine and needed medical supplies for 1 month. Talk to your medical provider, and to build your emergency kit, visit [ready.gov/kit](http://ready.gov/kit)



# SEASONAL READINESS & MONITORING THE TROPICS

SCAN WITH PHONE



Download  
the free  
**FEMA**  
App



## Tropical Awareness

The National Hurricane Center (NHC), your local National Weather Service (NWS), and your county Emergency Management work together to keep you updated with the latest tropical weather forecasts. Monitor weather forecasts and learn safety recommendations from these official information sources during threatening tropical events.

**National Hurricane Center**  
[hurricanes.gov](https://hurricanes.gov)

**National Weather Service**  
[weather.gov](https://weather.gov)

**Florida Division of Emergency Management**  
[floridadisaster.org](https://floridadisaster.org)



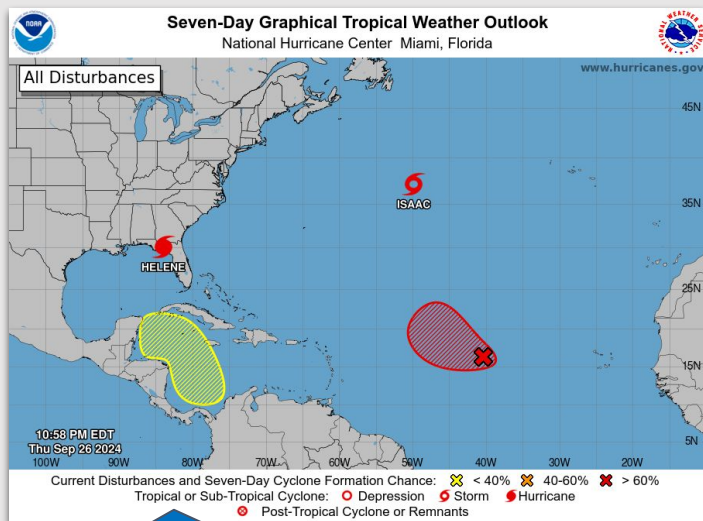
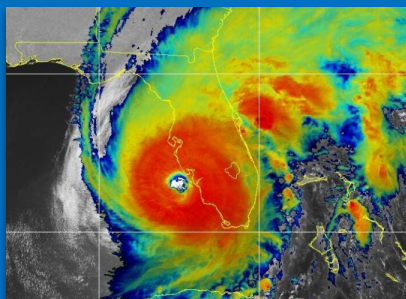
**NWSNHC**



**@NWSNHC**

## Did You Know...

You do not need to evacuate 100s of miles inland to escape storm surge; most times, only a few miles inland is sufficient.



## WATCHES

**Tropical Storm or Hurricane Watch**  
Winds are possible within 48 hours

**Storm Surge Watch**  
Possibility of life-threatening storm surge within 48 hrs

## WARNINGS

**Tropical Storm or Hurricane Warning**  
Winds are expected within 36 hours

**Storm Surge Warning**  
Danger of life-threatening storm surge within 36 hrs

## Tropical Weather Outlooks by NHC

Tropical weather outlooks are issued by the National Hurricane Center every 6 hours during hurricane season (June 1 – Nov 30) showing potential for tropical cyclone development.

**ARE YOU STORM-READY?**  
[www.ready.gov/hurricanes](https://www.ready.gov/hurricanes)



**National Weather Service**

