



# Drought Information Statement for Southeast TX and Southwest LA

Valid January, 23, 2026

Issued By: WFO Lake Charles, LA

## Contact Information:

- This product will be updated January, 30, 2026 or sooner if drought conditions change significantly.
- Please see all currently available products at <https://drought.gov/drought-information-statements>.
- Please visit <https://www.weather.gov/LCH/DroughtInformationStatement> for previous statements.
- Please visit <https://www.drought.gov/drought-status-updates/> for regional drought status updates.

- DROUGHT CONDITIONS OVER MOST OF THE AREA CONTINUE TO WORSEN
- SOME IMPROVEMENT WITH RECENT RAINFALL HAS BEEN NOTED ACROSS ACADIANA.

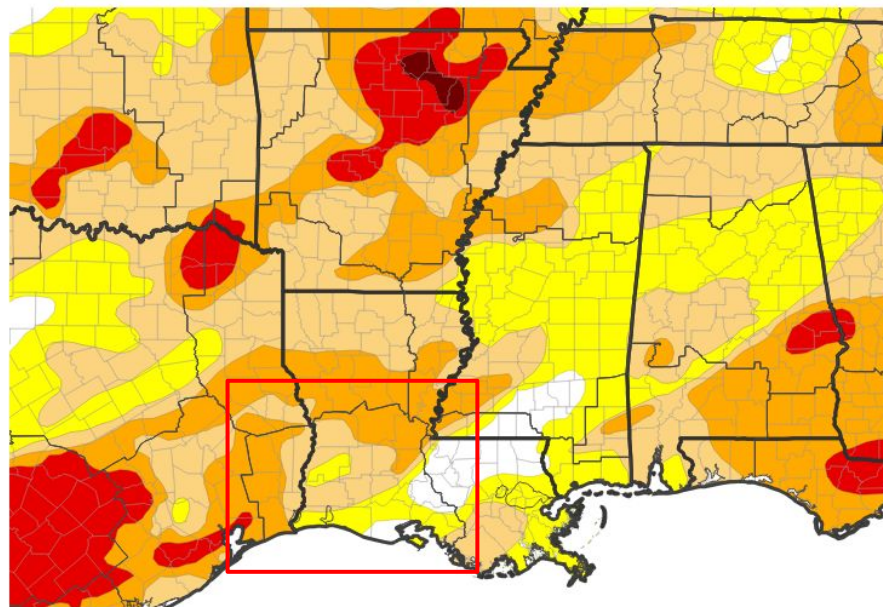


# U.S. Drought Monitor

Link to the [latest U.S. Drought Monitor](#)

- Drought Intensity and Extent
  - **D2 (Severe Drought)**: Portions of Southeast Texas and Central Louisiana.
  - **D1 (Moderate Drought)**: Much of the region north of I-10
  - **D0: (Abnormally Dry)**: Parts of central and coastal Louisiana.

U.S. Drought Monitor



U.S. Drought Monitor



Source(s): NDMC, NOAA, USDA; image courtesy of Drought.gov

Data Valid: 01/20/26



National Oceanic and  
Atmospheric Administration  
U.S. Department of Commerce

National Weather Service  
WFO Lake Charles, LA

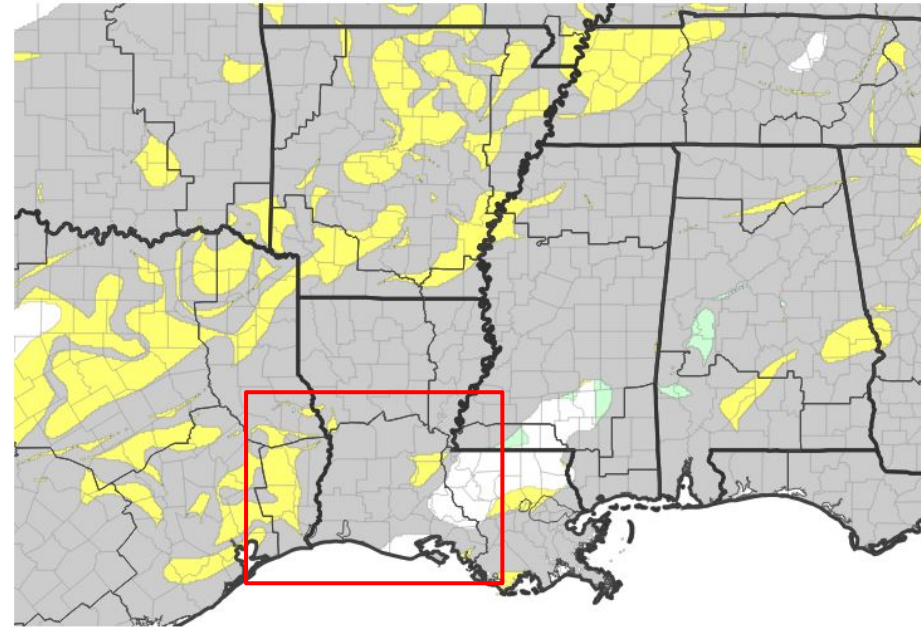


# Recent Change in Drought Intensity

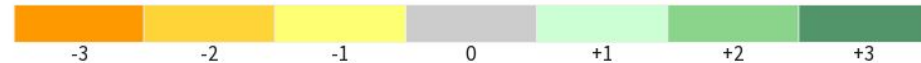
Link to the latest [1-week change map](#)

- One Week Drought Monitor Class Change.
  - Drought Worsened: [State each county or region within WFO region where a class degradation occurred. If nowhere is under a class degradation, remove subheading.]
  - No Change: [State each county or region within WFO region where no class change occurred. If nowhere is under no change, remove subheading.]
  - Drought Improved: [State each county or region within WFO region where a class improvement occurred. If nowhere is under a class improvement, remove subheading.]

U.S. Drought Monitor 1-Week Change Map



Drought Change Since Last Week



Source(s): NDMC, NOAA, USDA; image courtesy of Drought.gov

Data Valid: 01/20/26

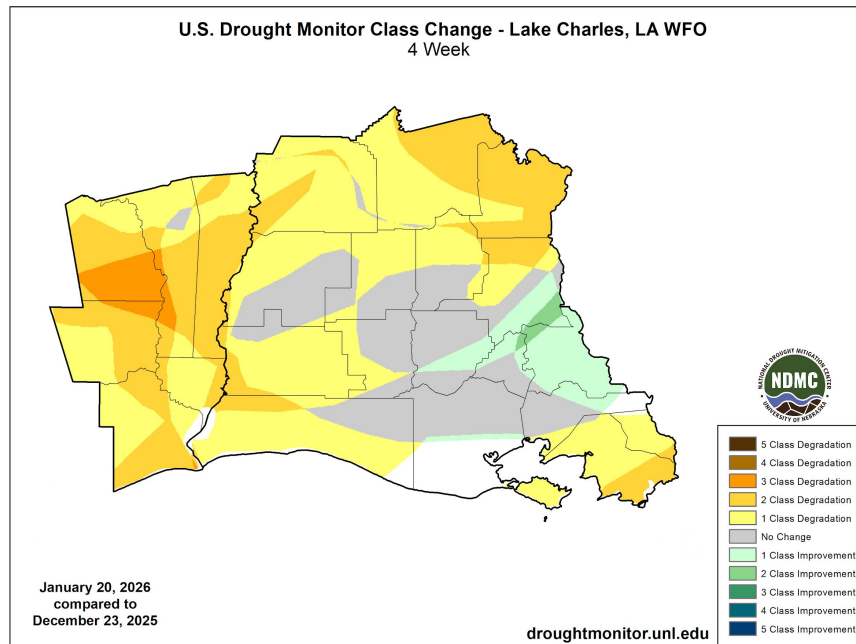




# Recent Change in Drought Intensity

Link to the latest [4-week change map](#)

- Four Week Drought Monitor Class Change.
  - Drought Worsened: 1 to 3 category class changes have been noted across much of the area, especially Southeast Texas.
  - Drought Improved: 1 to 2 category improvement has occurred across a small portion of Acadiana due to recent rainfall events.





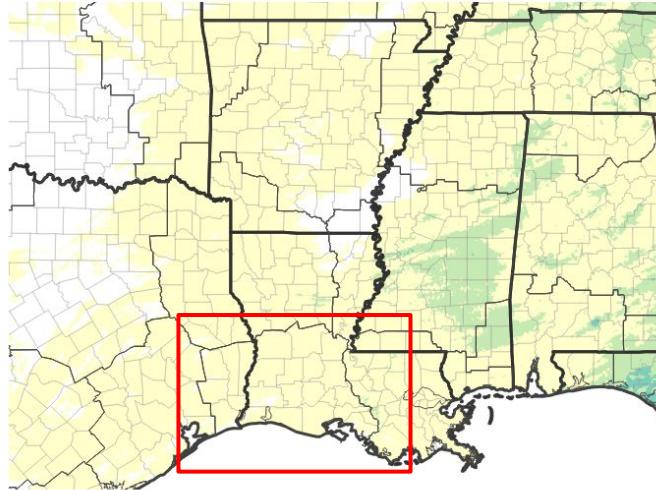


# Precipitation

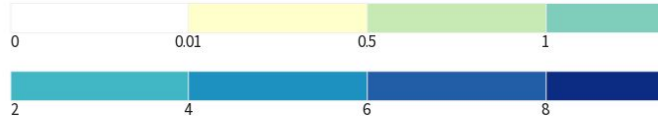
For the past 7 days

- Summarize conditions/impacts here

7-Day Precipitation Accumulations (Inches)



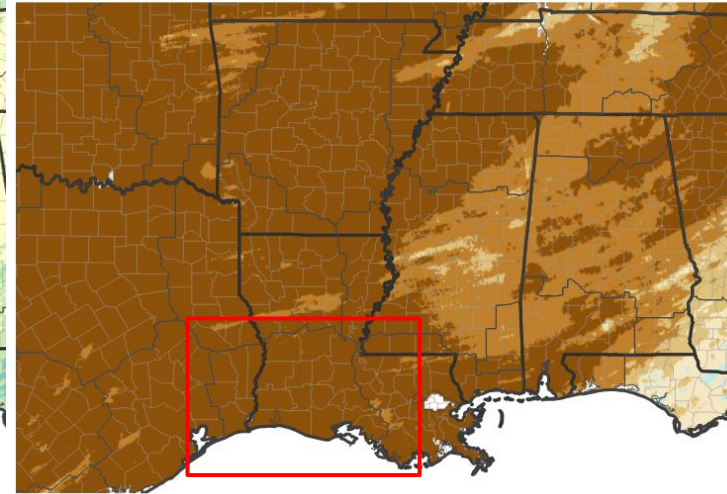
Inches of Precipitation



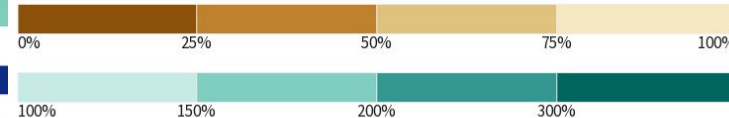
Source(s): National Weather Service Multi-Radar Multi-Sensor System;  
image courtesy of Drought.gov

Last Updated:

7-Day Percent of Normal Precipitation



Precipitation Shown as a Percentage of Normal Conditions



Source(s): National Weather Service Multi-Radar Multi-Sensor System;  
image courtesy of Drought.gov

Last Updated: 01/22/26



National Oceanic and  
Atmospheric Administration  
U.S. Department of Commerce

National Weather Service  
WFO Lake Charles, LA

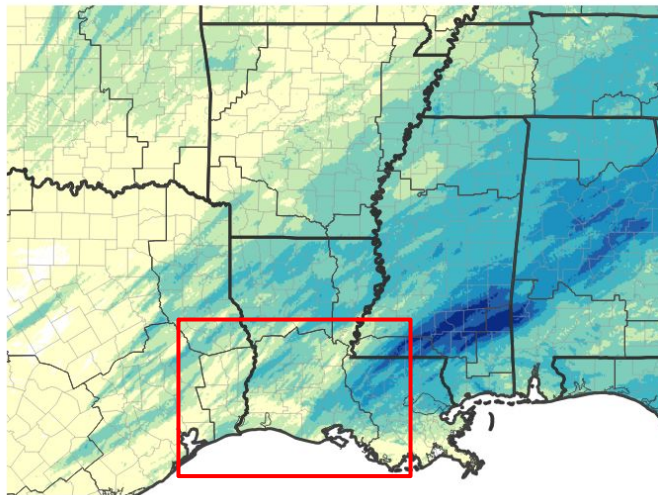


# Precipitation

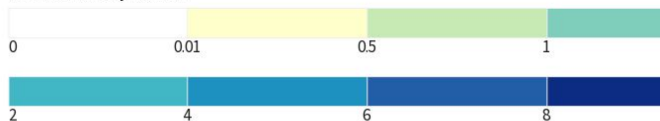
For the past 30 days

- Summarize conditions/impacts here

30-Day Precipitation Accumulations (Inches)



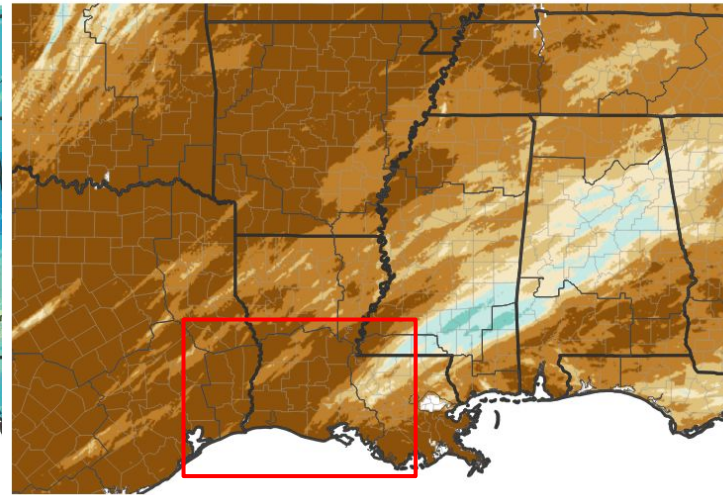
Inches of Precipitation



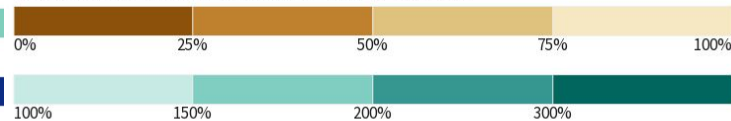
Source(s): National Weather Service Multi-Radar Multi-Sensor System;  
image courtesy of Drought.gov

Last Updated:

30-Day Percent of Normal Precipitation



Precipitation Shown as a Percentage of Normal Conditions



Source(s): National Weather Service Multi-Radar Multi-Sensor System;  
image courtesy of Drought.gov

Last Updated: 01/22/26



National Oceanic and  
Atmospheric Administration  
U.S. Department of Commerce

National Weather Service  
WFO Lake Charles, LA

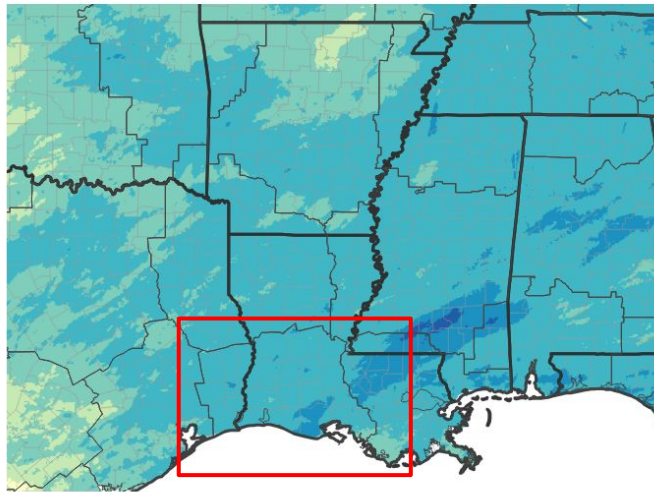


# Precipitation

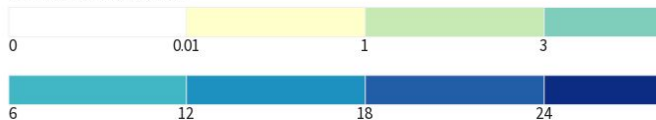
For the past 90 days

- Summarize conditions/impacts here

90-Day Precipitation Accumulations (Inches)



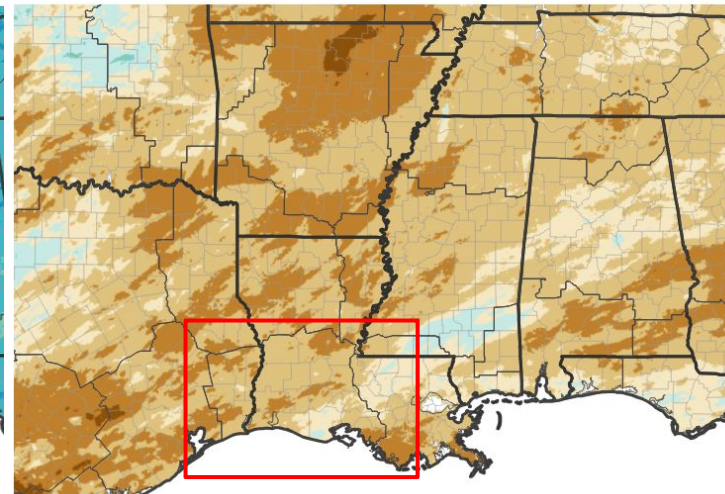
Inches of Precipitation



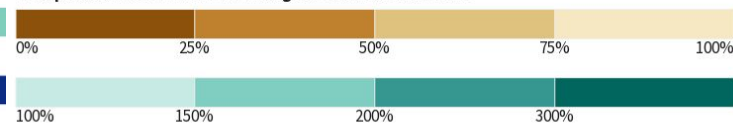
Source(s): National Weather Service Multi-Radar Multi-Sensor System; image courtesy of Drought.gov

Last Updated:

90-Day Percent of Normal Precipitation



Precipitation Shown as a Percentage of Normal Conditions



Source(s): National Weather Service Multi-Radar Multi-Sensor System; image courtesy of Drought.gov

Last Updated: 01/22/26





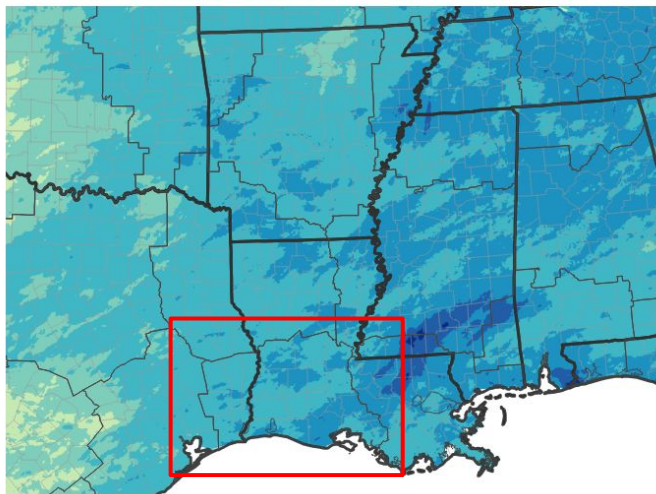


# Precipitation

For the past 120 days

- Summarize conditions/impacts here

120-Day Precipitation Accumulations (Inches)



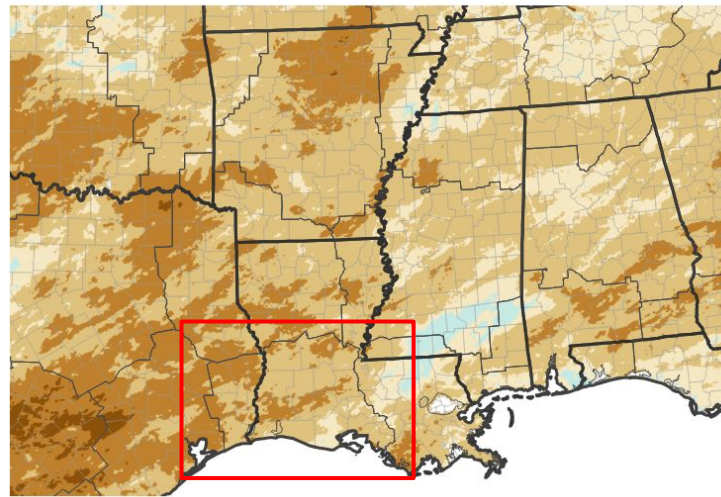
Inches of Precipitation



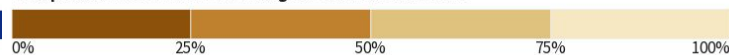
Source(s): National Weather Service Multi-Radar Multi-Sensor System; image courtesy of Drought.gov

Last Updated:

120-Day Percent of Normal Precipitation



Precipitation Shown as a Percentage of Normal Conditions



Source(s): National Weather Service Multi-Radar Multi-Sensor System; image courtesy of Drought.gov

Last Updated: 01/22/26



National Oceanic and  
Atmospheric Administration

U.S. Department of Commerce

National Weather Service  
WFO Lake Charles, LA



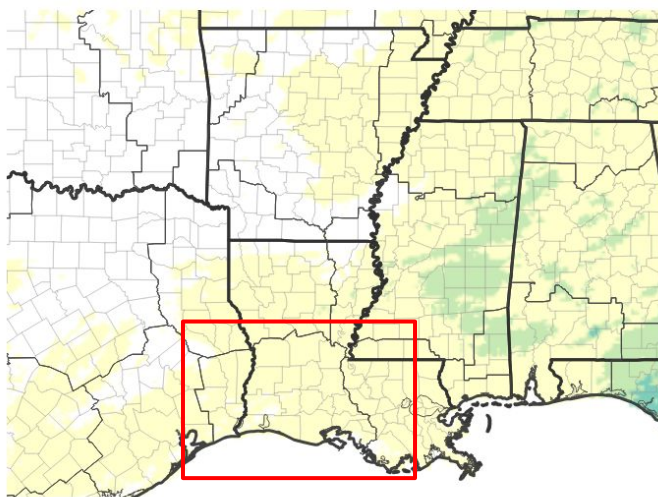


# Precipitation

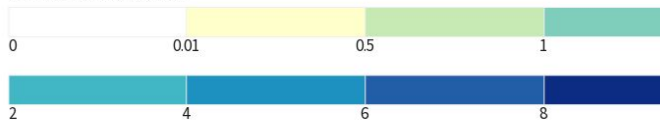
For the past 7 days

- Summarize conditions/impacts here

NWPS 7-Day Precipitation Accumulations (inches)

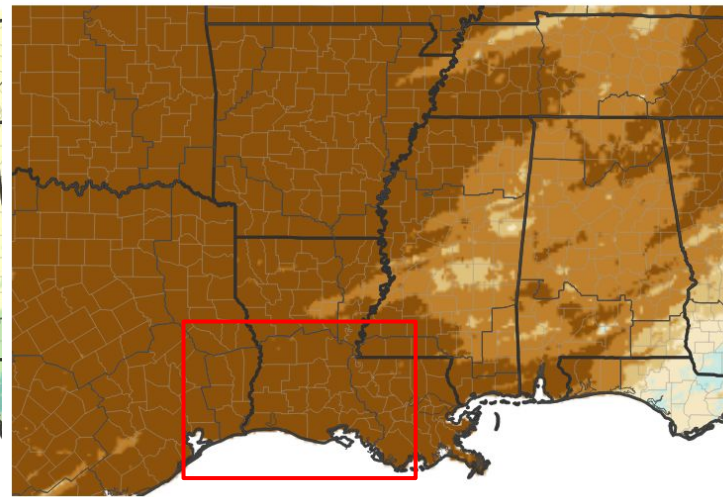


Inches of Precipitation

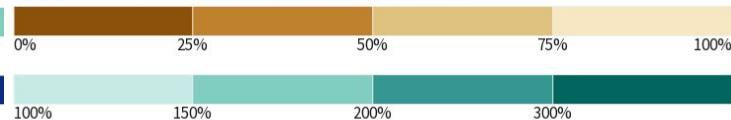


Source(s): National Weather Service National Water Prediction Service;  
image courtesy of Drought.gov

7-Day Precipitation: Percent of PRISM Normal



Precipitation Shown as a Percentage of Normal Conditions



Data Valid: Source(s): National Weather Service National Water Prediction Service;  
image courtesy of Drought.gov

Last Updated: 01/21/26



National Oceanic and  
Atmospheric Administration

U.S. Department of Commerce

National Weather Service  
WFO Lake Charles, LA

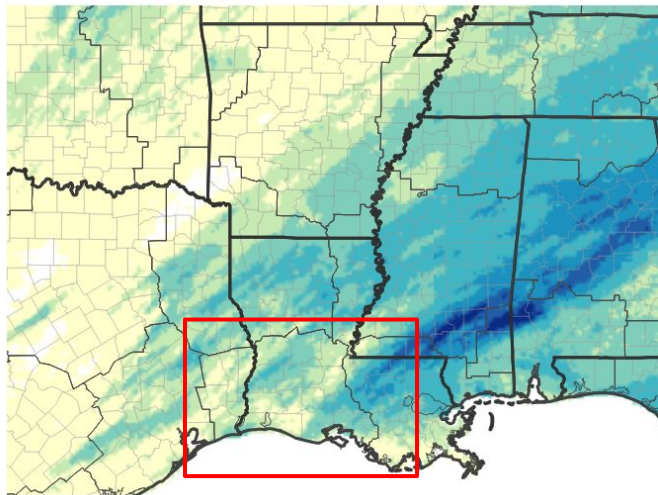


# Precipitation

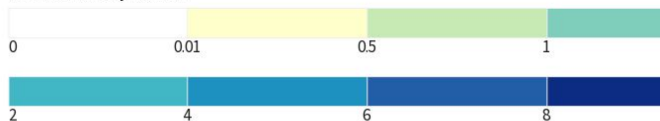
For the past 30 days

- Summarize conditions/impacts here

NWPS 30-Day Precipitation Accumulations (inches)



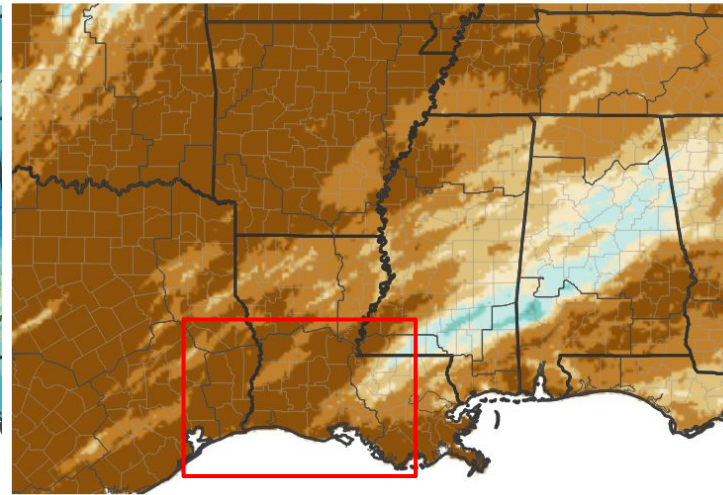
Inches of Precipitation



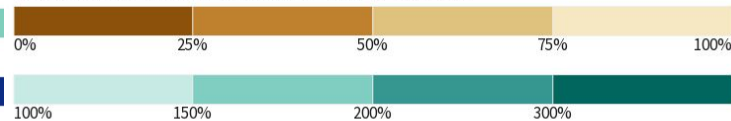
Source(s): National Weather Service National Water Prediction Service;  
image courtesy of Drought.gov

Data Valid:

30-Day Precipitation: Percent of PRISM Normal



Precipitation Shown as a Percentage of Normal Conditions



Source(s): National Weather Service National Water Prediction Service;  
image courtesy of Drought.gov

Data Valid: 01/21/26



National Oceanic and  
Atmospheric Administration  
U.S. Department of Commerce

National Weather Service  
WFO Lake Charles, LA

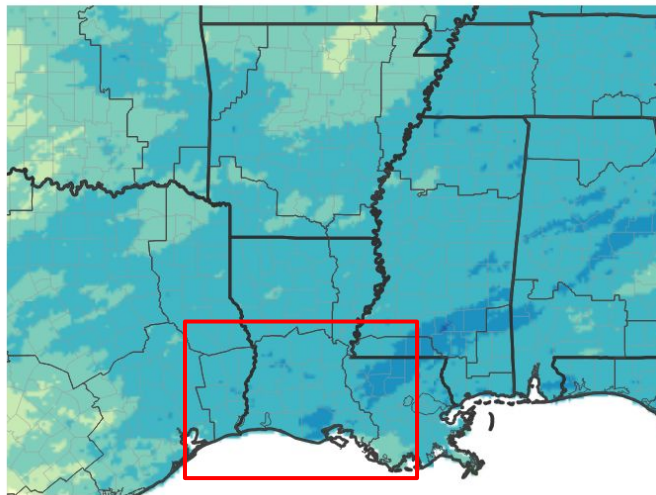


# Precipitation

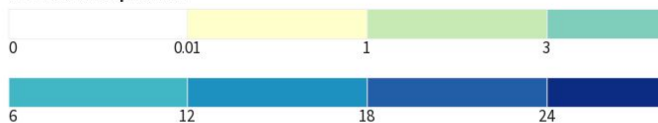
For the past 90 days

- With the exception of Vermilion Parish precipitation continues to below normal over the past 90 days.

NWPS 90-Day Precipitation Accumulations (inches)

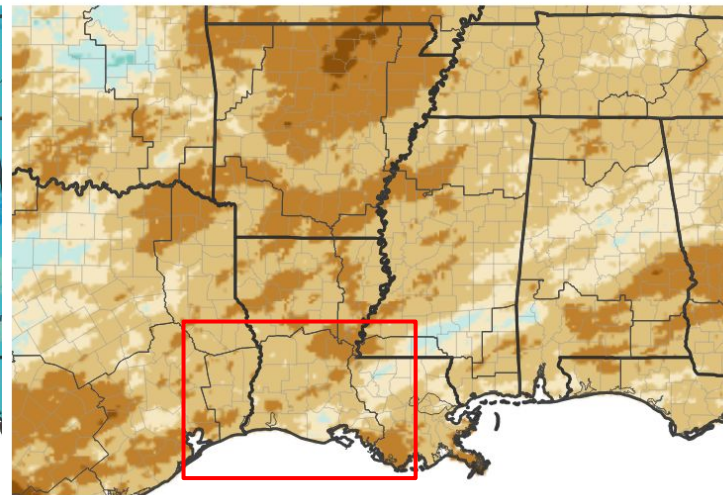


Inches of Precipitation

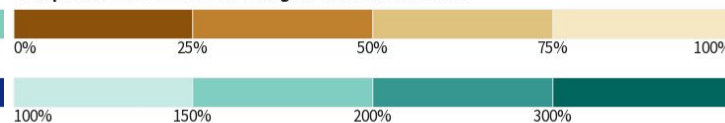


Source(s): National Weather Service National Water Prediction Service;  
image courtesy of Drought.gov

90-Day Precipitation: Percent of PRISM Normal



Precipitation Shown as a Percentage of Normal Conditions



Data Valid: Source(s): National Weather Service National Water Prediction Service;  
image courtesy of Drought.gov

Data Valid: 01/21/26



National Oceanic and  
Atmospheric Administration  
U.S. Department of Commerce

National Weather Service  
WFO Lake Charles, LA



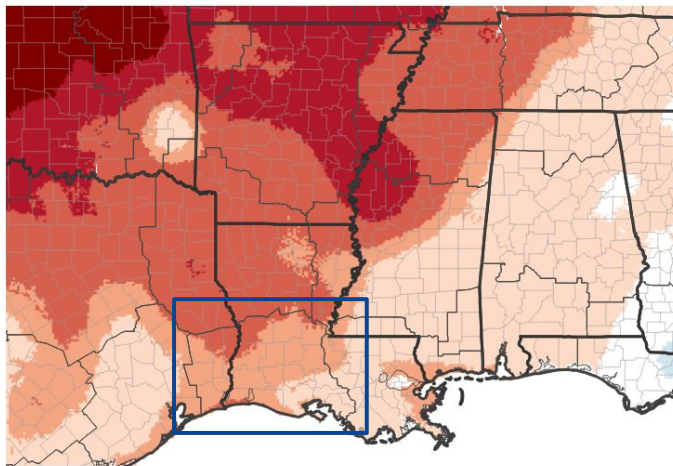


# Temperature

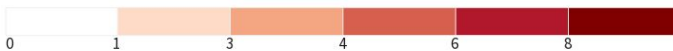
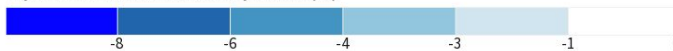
Link to [Southern Regional Climate Center](#)

- Temperatures continue to be well above normal this winter season.

7-Day Temperature Anomaly



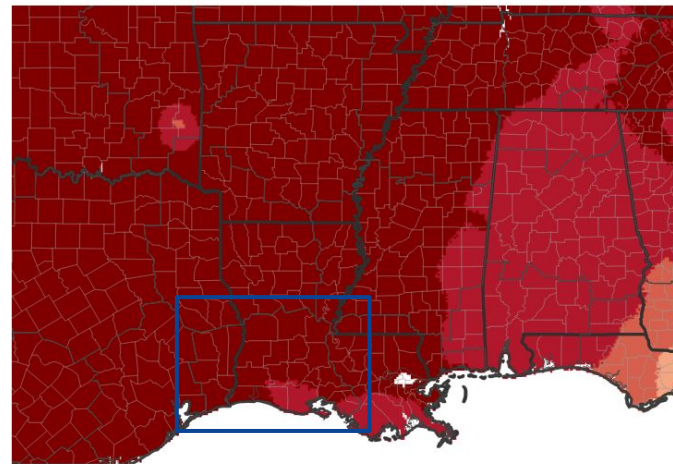
Departure from Normal Max Temperature (°F)



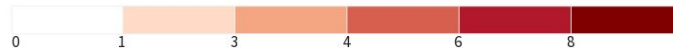
Source(s): NOAA's National Centers for Environmental Information; image courtesy of Drought.gov

Data Valid: 01/17/26

30-Day Temperature Anomaly



Departure from Normal Max Temperature (°F)



Source(s): NOAA's National Centers for Environmental Information; image courtesy of Drought.gov

Data Valid: 01/17/26



National Oceanic and  
Atmospheric Administration  
U.S. Department of Commerce

National Weather Service  
WFO Lake Charles, LA





# Summary of Impacts

Links: See/submit [Condition Monitoring Observer Reports \(CMOR\)](#) and view the [Drought Impacts Reporter](#)

## Hydrologic Impacts

- Much below normal flows are observed on most river basins.

## Agricultural Impacts

- Severely Dry Crop Soil Moisture Index

## Fire Hazard Impacts

- Increased wildfire risk has been noted when coupled with low humidity and elevated winds.

## Other Impacts

- There are no known impacts at this time.

## Mitigation Actions

- Please refer to your municipality and/or water provider for mitigation information.





# Hydrologic Conditions and Impacts

- Much below normal flows are observed on most river basins.

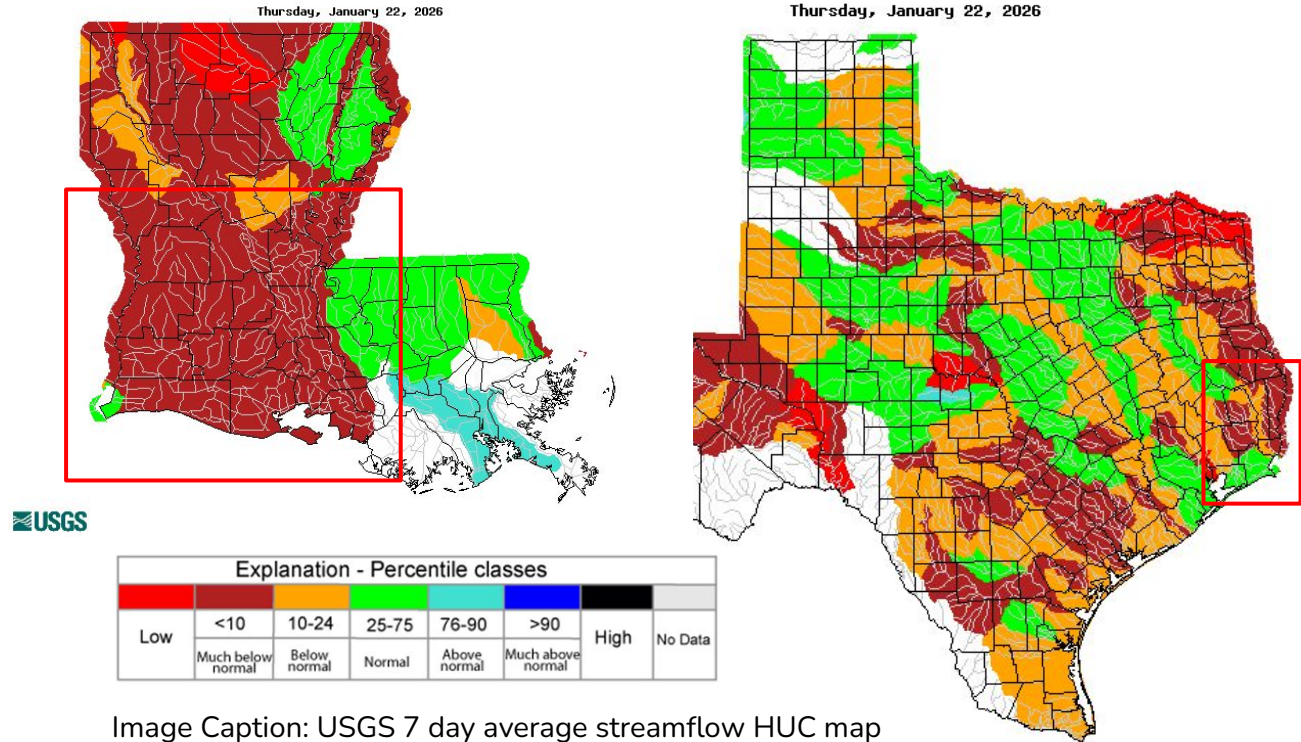


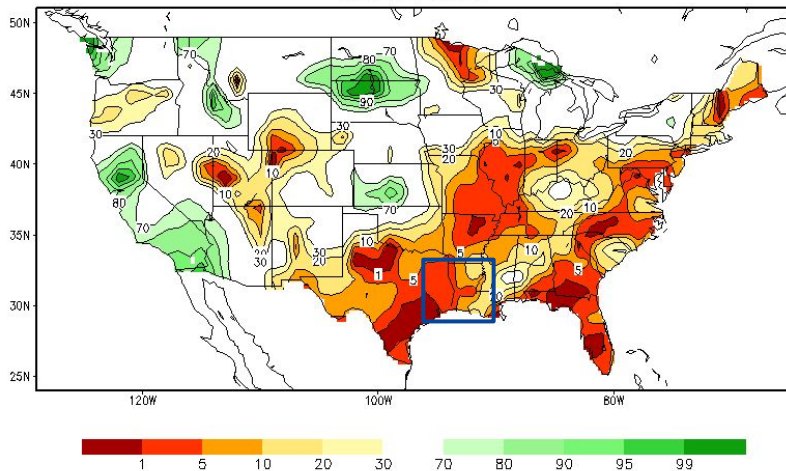
Image Caption: USGS 7 day average streamflow HUC map valid 01 14 2026



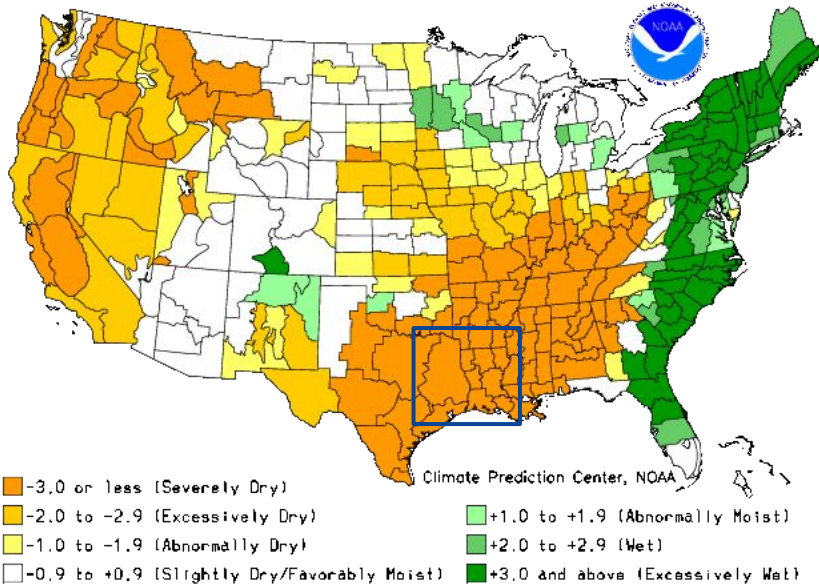
# Agricultural Impacts

- Summarize conditions/impacts here

Calculated Soil Moisture Ranking Percentile  
JAN 22, 2026



Crop Moisture Index by Division  
Weekly Value for Period Ending OCT 26, 2024  
Short Term Need vs. Available Water in a Shallow Soil Profile





# Agricultural Impacts

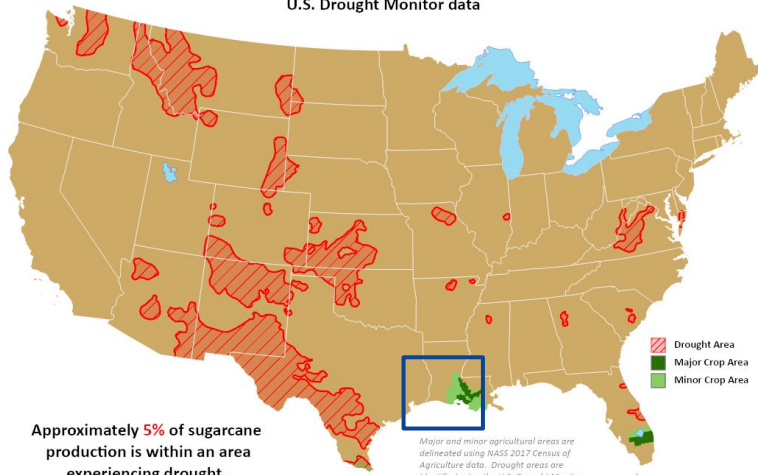
- Summarize conditions/impacts here



This product was prepared by the  
USDA Office of the Chief Economist (OCE)  
World Agricultural Outlook Board (WAOB)

## Sugarcane Areas in Drought

Reflects June 18, 2024  
U.S. Drought Monitor data



Approximately 5% of sugarcane  
production is within an area  
experiencing drought.

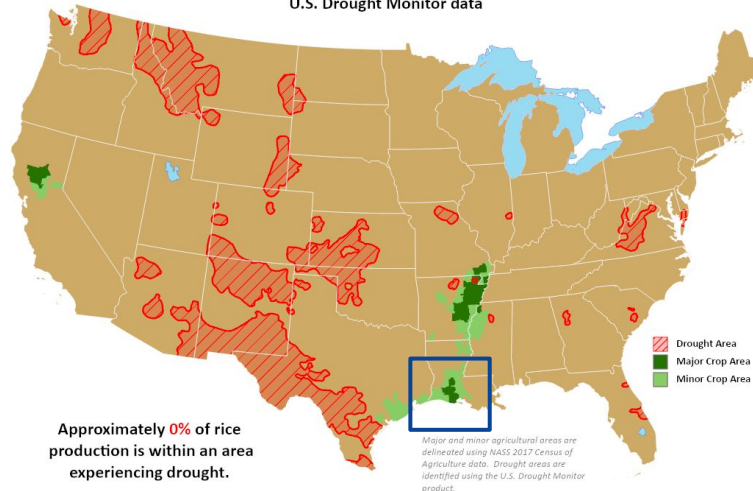
Major and minor agricultural areas are  
delineated using NASS 2017 Census of  
Agriculture data. Drought areas are  
identified using the U.S. Drought Monitor  
product.



This product was prepared by the  
USDA Office of the Chief Economist (OCE)  
World Agricultural Outlook Board (WAOB)

## Rice Areas in Drought

Reflects June 18, 2024  
U.S. Drought Monitor data



Approximately 0% of rice  
production is within an area  
experiencing drought.

Major and minor agricultural areas are  
delineated using NASS 2017 Census of  
Agriculture data. Drought areas are  
identified using the U.S. Drought Monitor  
product.

- Summarize conditions/impacts here



National Oceanic and  
Atmospheric Administration

U.S. Department of Commerce

National Weather Service  
WFO Lake Charles, LA





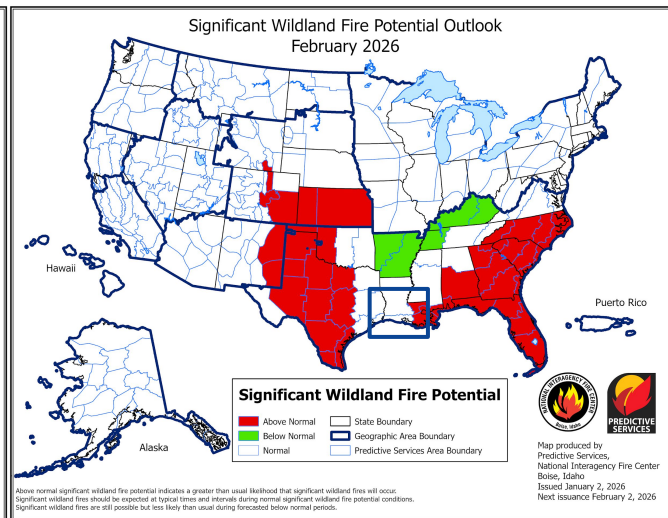
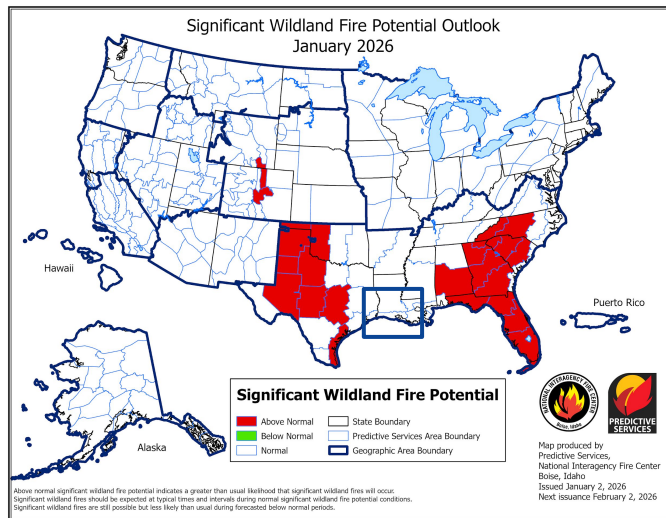
# Fire Hazard Impacts

Link to [Wildfire Potential Outlooks from the National Interagency Coordination Center](#).

- Summarize conditions/impacts here

Latest TX Burn Ban map available [here](#).

Latest LA Burn Ban map available [here](#).

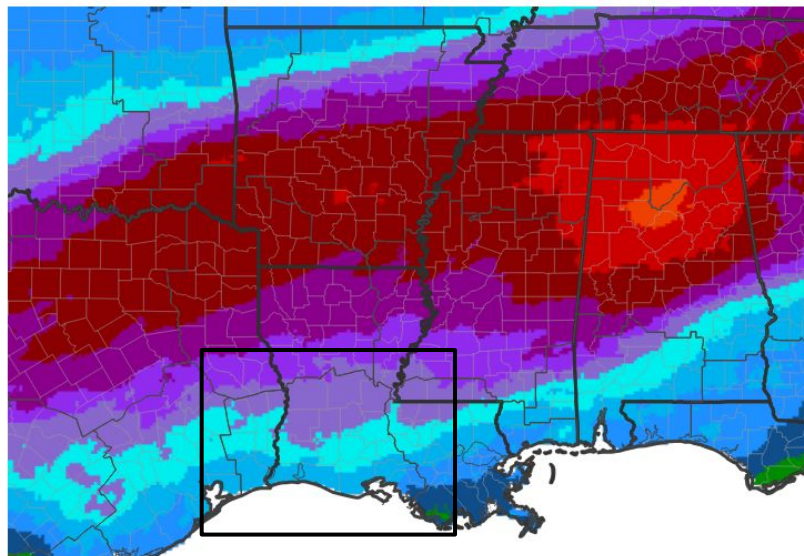




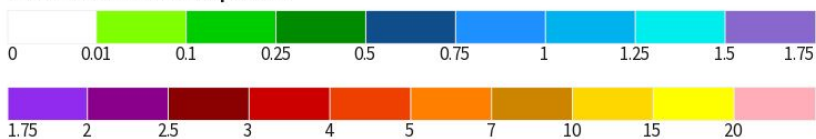
# Seven Day Precipitation Forecast

- Three quarters to two inches of rainfall is forecast over the next week.

## 7-Day Quantitative Precipitation Forecast for January 22, 2026–January 29, 2026



Predicted Inches of Precipitation



Source(s): National Weather Service Weather Prediction Center; image courtesy of Drought.gov

Last Updated: 01/22/26





# Rapid Onset Drought Outlook

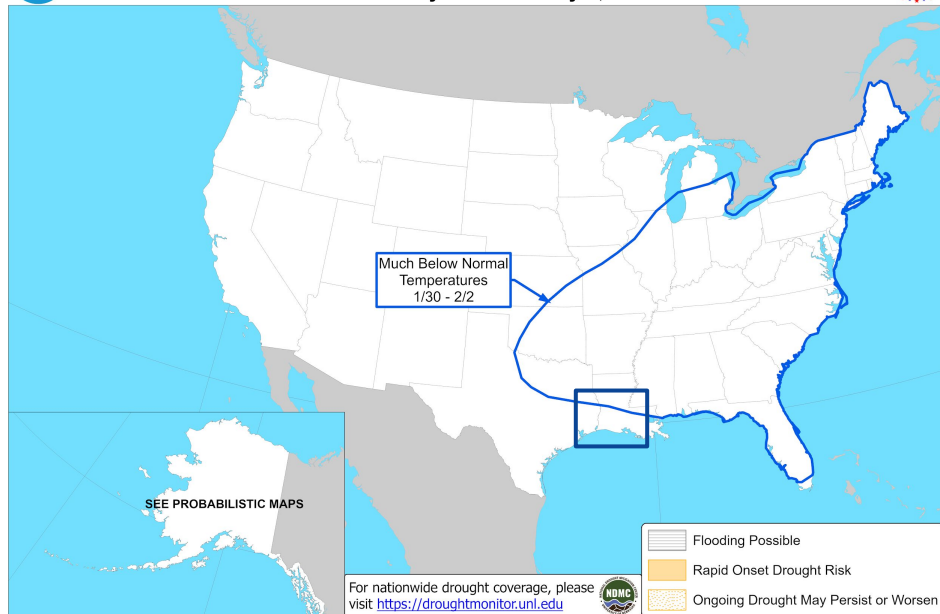
Links to the latest Climate Prediction Center 8 to 14 day [Temperature Outlook](#) and [Precipitation Outlook](#).

- Summarize conditions and impacts here



## Days 8-14 U.S. Hazards Outlook

Valid: January 30 - February 5, 2026



Climate Prediction Center

Released: January 22, 2026 3:00 PM EST

Follow us: [f](#) [X](#)

[www.cpc.ncep.noaa.gov](http://www.cpc.ncep.noaa.gov)



National Oceanic and  
Atmospheric Administration  
U.S. Department of Commerce

National Weather Service  
WFO Lake Charles, LA

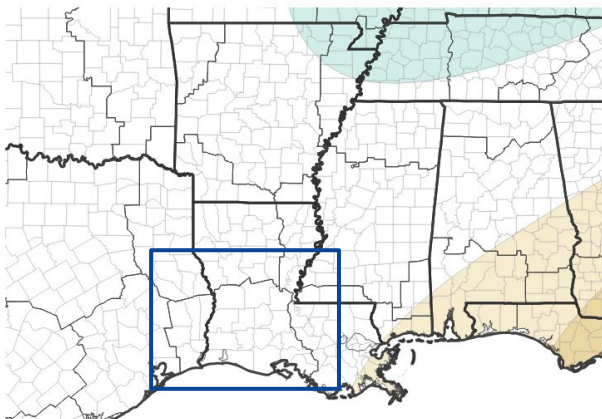


# Long-Range Outlooks

The latest monthly and seasonal outlooks can be found on the [CPC homepage](#)

- Summarize conditions/impacts here

Monthly Precipitation Outlook for February 1, 2026–February 28, 2026



Probability of Below-Normal Precipitation



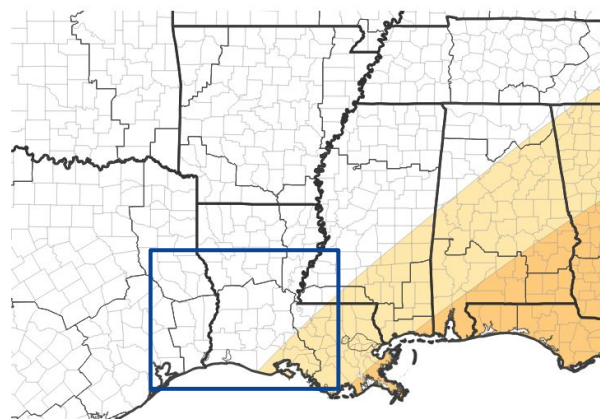
Probability of Above-Normal Precipitation



Probability of Near-Normal Precipitation



Monthly Temperature Outlook for February 1, 2026–February 28, 2026



Probability of Below-Normal Temperatures



Probability of Above-Normal Temperatures



Probability of Near-Normal Temperatures



Source(s): Climate Prediction Center image courtesy of Drought.gov

Last Updated: 01/15/26



National Oceanic and  
Atmospheric Administration

U.S. Department of Commerce

National Weather Service  
WFO Lake Charles, LA



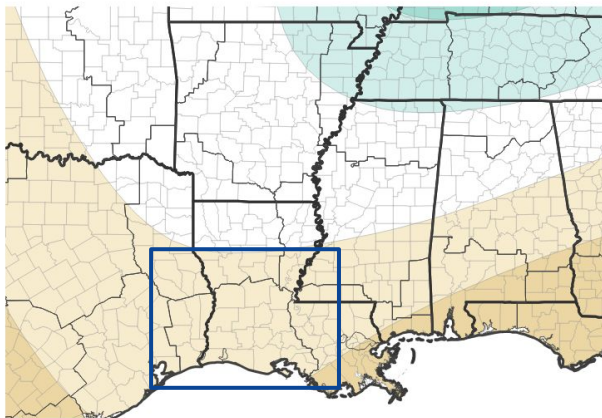


# Long-Range Outlooks

The latest monthly and seasonal outlooks can be found on the [CPC homepage](#)

- Summarize conditions/impacts here

Seasonal (3-Month) Precipitation Outlook for February 1, 2026–April 30, 2026



Probability of Below-Normal Precipitation



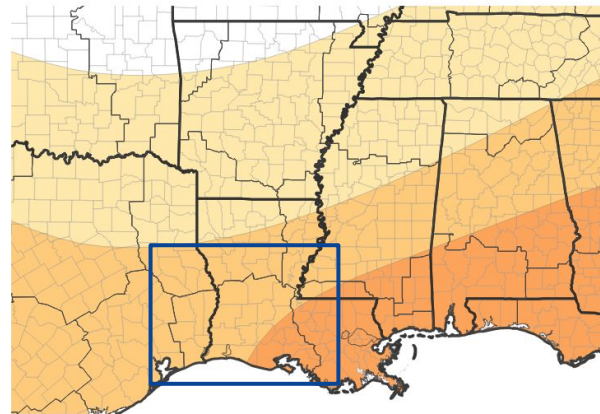
Probability of Above-Normal Precipitation



Probability of Near-Normal Precipitation



Seasonal (3-Month) Temperature Outlook for February 1, 2026–April 30, 2026



Probability of Below-Normal Temperatures



Probability of Above-Normal Temperatures



Probability of Near-Normal Temperatures



Source(s): Climate Prediction Center images courtesy of Drought.gov

Last Updated: 01/15/26



National Oceanic and  
Atmospheric Administration

U.S. Department of Commerce

National Weather Service  
WFO Lake Charles, LA

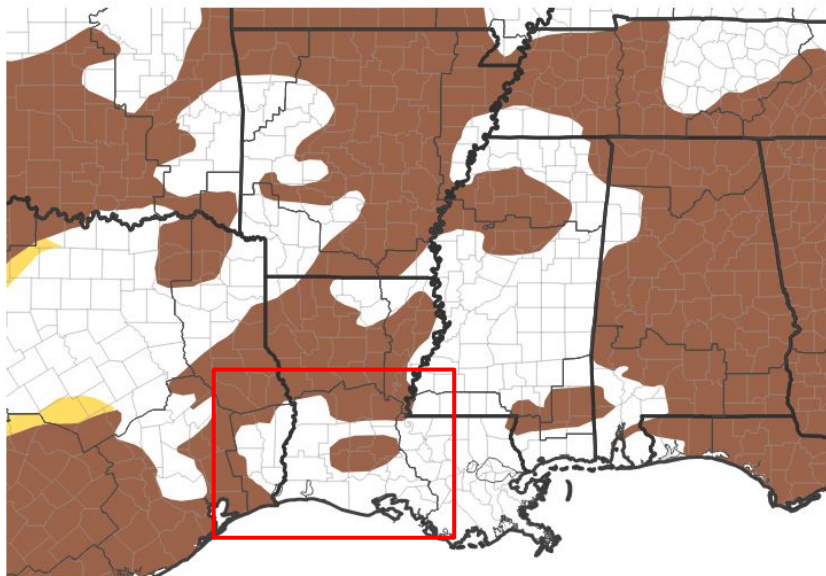


# Drought Outlook

The latest monthly and seasonal outlooks can be found on the [CPC homepage](#)

- Summarize conditions/impacts here

## 1-Month Drought Outlook for January 1, 2026–January 31, 2026



Drought Is Predicted To...



Source(s): Climate Prediction Center; image courtesy of Drought.gov

Last Updated: 12/31/25

Links to the latest:

[Climate Prediction Center Monthly Drought Outlook](#)

[Climate Prediction Center Seasonal Drought Outlook](#)



National Oceanic and  
Atmospheric Administration  
U.S. Department of Commerce

National Weather Service  
WFO Lake Charles, LA

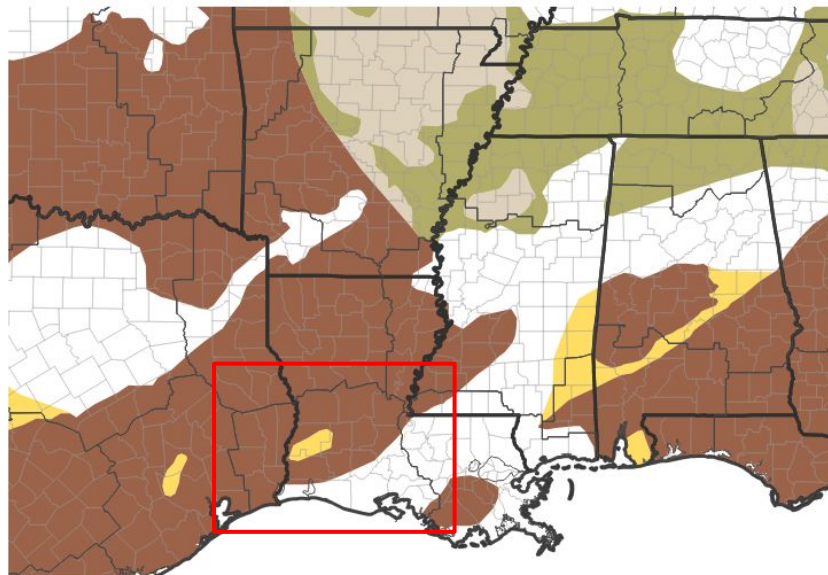


# Drought Outlook

The latest monthly and seasonal outlooks can be found on the [CPC homepage](#)

- Drought conditions are expected to persist across most of the area.

**Seasonal (3-Month) Drought Outlook for January 15, 2026–April 30, 2026**



**Drought Is Predicted To...**



Source(s): Climate Prediction Center; image courtesy of Drought.gov

Last Updated: 01/15/26

Links to the latest:

[Climate Prediction Center Monthly Drought Outlook](#)

[Climate Prediction Center Seasonal Drought Outlook](#)



**National Oceanic and  
Atmospheric Administration**  
U.S. Department of Commerce

**National Weather Service**  
WFO Lake Charles, LA