



Drought Information Statement for Southwest LA and Southeast TX

October 20, 2023

Issued By: Lake Charles NWS

Contact Information: sr-lch.ops@noaa.gov

- This product will be updated Nov, 28, 2023 or sooner if drought conditions change significantly.
- Please see all currently available products at <https://drought.gov/drought-information-statements>.
- Please visit <https://www.weather.gov/lch/DroughtInformationStatement> for previous statements.





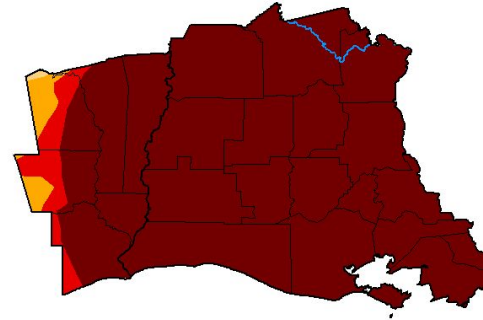
U.S. Drought Monitor

Link to the [latest U.S. Drought Monitor](#) for SW Louisiana and SE Texas

- DROUGHT CONDITIONS CONTINUE ACROSS THE ENTIRE AREA
- Drought intensity and Extent
 - D4 (Exceptional Drought): The vast majority of Southwest Louisiana and Southeast Texas.
 - D3/D2 (Extreme/Severe Drought): Portions of Tyler, Hardin and Jefferson Counties in Southeast Texas.

U.S. Drought Monitor Lake Charles, LA WFO

October 17, 2023
(Released Thursday, Oct. 19, 2023)
Valid 8 a.m. EDT



Drought Conditions (Percent Area)

	None	D0-D4	D1-D4	D2-D4	D3-D4	D4
Current	0.00	100.00	100.00	99.86	97.72	93.54
Last Week 10-10-2023	0.00	100.00	100.00	99.99	97.72	93.54
3 Months Ago 07-18-2023	0.00	100.00	81.63	0.00	0.00	0.00
Start of Calendar Year 01-01-2023	87.39	12.61	4.28	0.00	0.00	0.00
Start of Water Year 09-26-2023	0.00	100.00	100.00	100.00	99.99	88.86
One Year Ago 10-18-2022	0.00	100.00	53.90	0.00	0.00	0.00

Intensity

- None
- D0 Abnormally Dry
- D1 Moderate Drought
- D2 Severe Drought
- D3 Extreme Drought
- D4 Exceptional Drought

The Drought Monitor focuses on broad-scale conditions. Local conditions may vary. For more information on the Drought Monitor, go to <https://droughtmonitor.unl.edu/About.aspx>

Author
Rocky Bilotta
NCEI/NOAA



droughtmonitor.unl.edu

Image Caption: U.S. Drought Monitor valid 7am CDT October 17th.





Recent Change in Drought Intensity

Link to the latest [4-week change map](#) for SW Louisiana and SE Texas

- Four Week Drought Monitor Class Change.
 - Drought Worsened: Much of the Lower Atchafalaya Basin in Southwest Louisiana.
 - No Change: The vast majority of Southwest Louisiana and Southeast Texas.
 - Drought Improved: Much of Tyler County, as well as portions of Hardin and Jefferson Counties and a small corner of Jasper County, all in Southeast Texas.

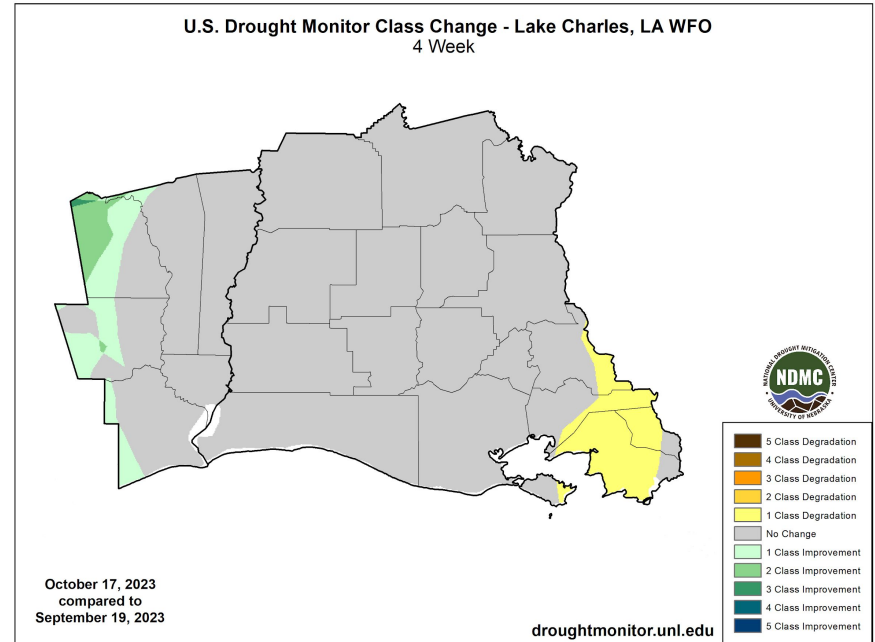


Image Caption: U.S. Drought Monitor 4-week change map valid 8am EDT October 17th.

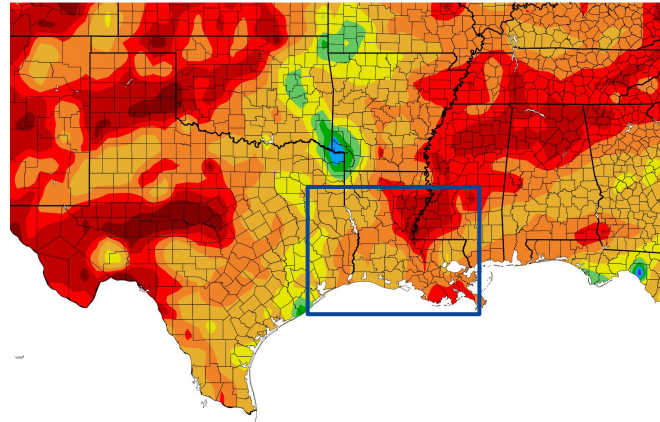




Precipitation

- Precipitation has been well below normal over the last 30 days with the exception of Acadia Parish, which has been only slightly dry.

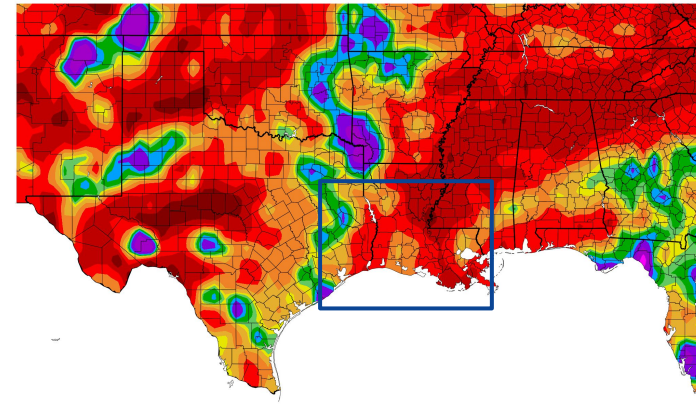
Precipitation (in)
9/20/2023 - 10/19/2023



Generated 10/20/2023 at HPRCC using provisional data.

NOAA Regional Climate

Percent of Normal Precipitation (%)
9/20/2023 - 10/19/2023



Generated 10/20/2023 at HPRCC using provisional data.

NOAA Regional Climate Ce

Image Captions:

Left - Precipitation Amount for [area]

Right - Percent of Normal Precipitation for [area]

Data Courtesy High Plains Regional Climate Center.

Data over the past 30 days ending Oct 19, 2023

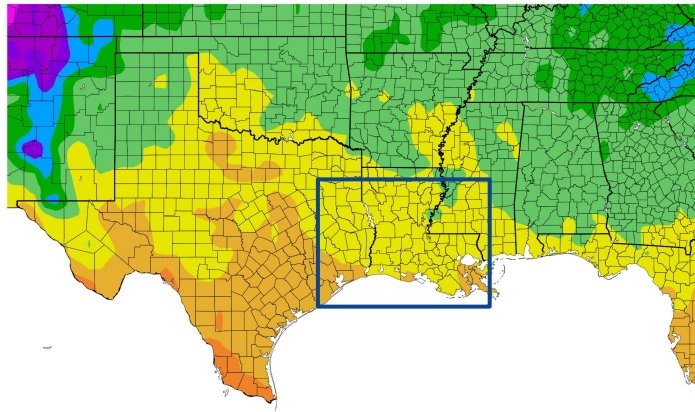




Temperature

- Continued above normal temperatures (with the exceptions of areas near the coast in Southwest and South-Central Louisiana) are causing evaporation rates of 0.20 to 0.30 of an inch per day.

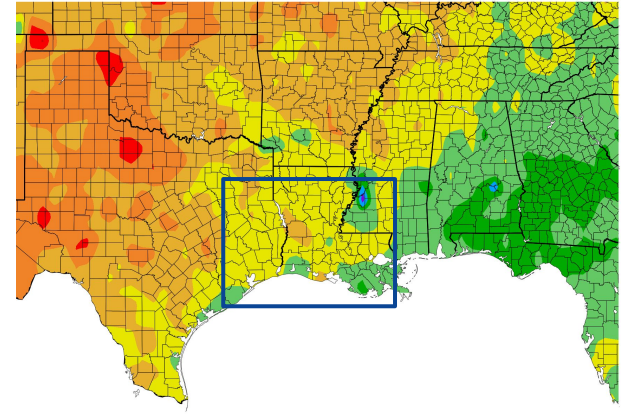
Temperature (F)
9/20/2023 – 10/19/2023



Generated 10/20/2023 at HPRCC using provisional data.

NOAA Regional Climate Centers

Departure from Normal Temperature (F)
9/20/2023 – 10/19/2023



2023 at HPRCC using provisional data.

NOAA Regional Climate Centers

Image Captions:
Left - Average Temperature
Right - Departure from Normal Temperature
Data Courtesy High Plains Regional Climate Center.
Data over the past 30 days ending Oct 19, 2023





Summary of Impacts

Links: See/submit [Condition Monitoring Observer Reports \(CMOR\)](#) and view the [Drought Impacts Reporter](#)

Hydrologic Impacts

- Many streams are running below to much below normal.

Agricultural Impacts

- Hay production across the area will not meet winter demands.

Fire Hazard Impacts

- Fire activity will continue to be above normal.

Mitigation Actions

- Many municipal water systems have implemented water conservation messaging.





Hydrologic Conditions and Impacts

- Streamflow conditions have improved in some locations. Below normal conditions continue in the Village Creek, Calcasieu Sabine, and Vermilion/Teche River watersheds.

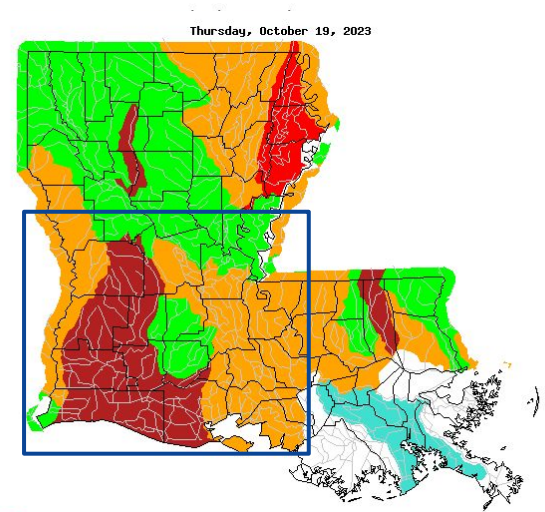
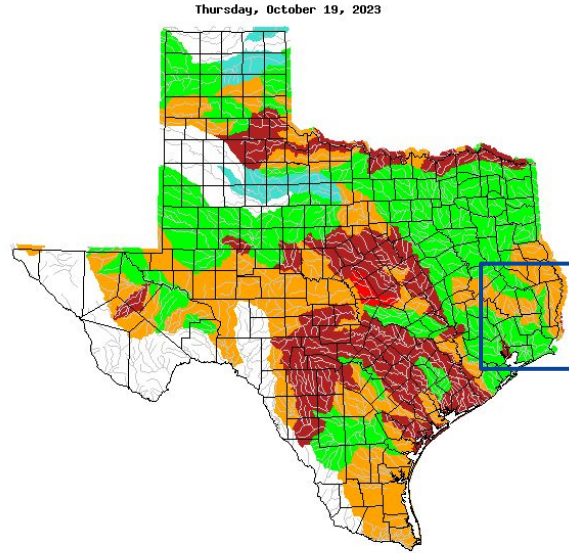


Image Caption: USGS 7 day average streamflow HUC map valid Oct 19 2023





Agricultural Impacts

- Hay production is well below average this season. Livestock sales have been numerous.
- Many agricultural burns were delayed; however they have resumed.

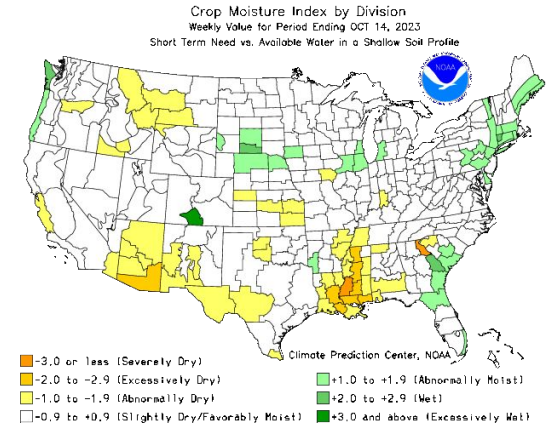
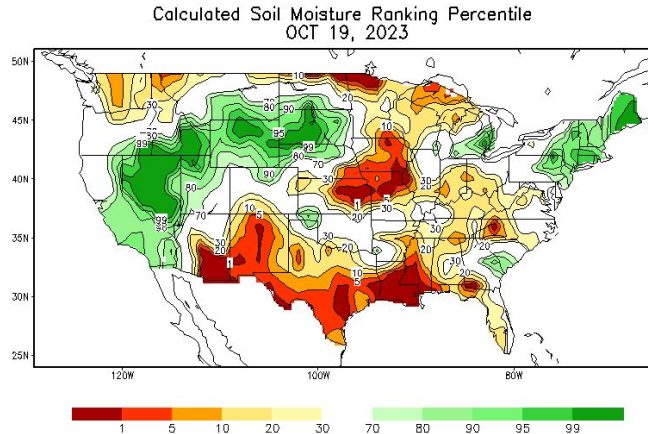


Image Captions:

Left: CPC Calculated [Soil Moisture Ranking Percentile](#) valid october 19, 2023

Right: [Crop Moisture Index by Division](#). Weekly value for period ending October 14, 2023

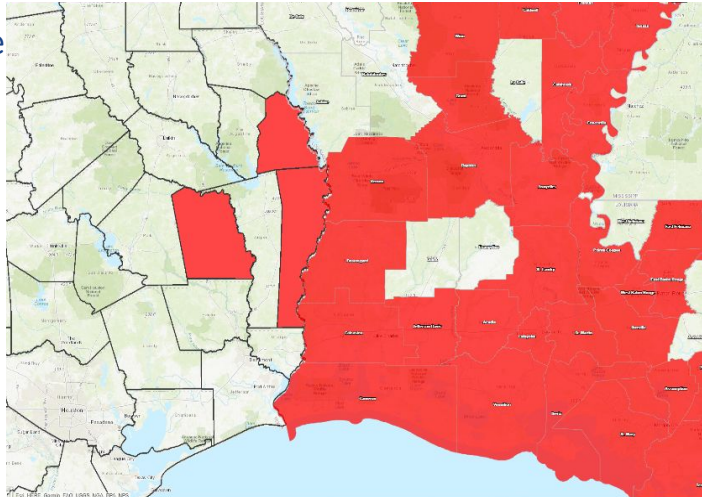




Fire Hazard Impacts

Link to [Wildfire Potential Outlooks from the National Interagency Coordination Center](#).

- Fires have been above average in number and size across the area due to very dry fuels; burn bans remain in effect for most parishes and a few counties within our region.



Latest TX Burn Ban map available [here](#).

Latest LA Burn Ban map available [here](#).

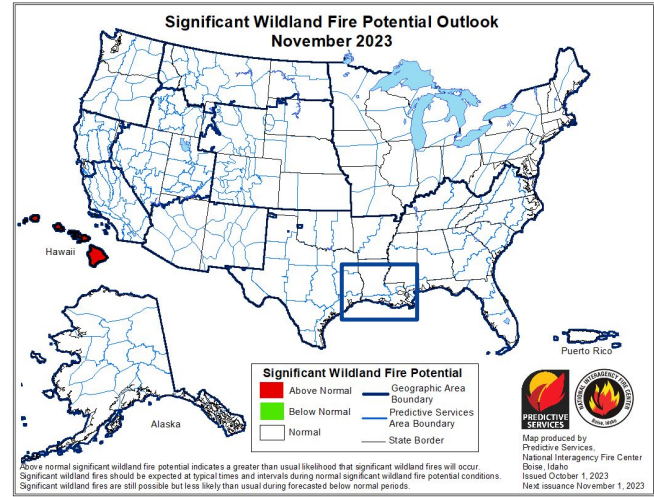


Image Caption: [Significant Wildland Fire Potential Monthly Outlook](#) for November 2023



Seven Day Precipitation Forecast

- Minimal rainfall amounts are expected across the area, especially Southwest Louisiana, until late next week.

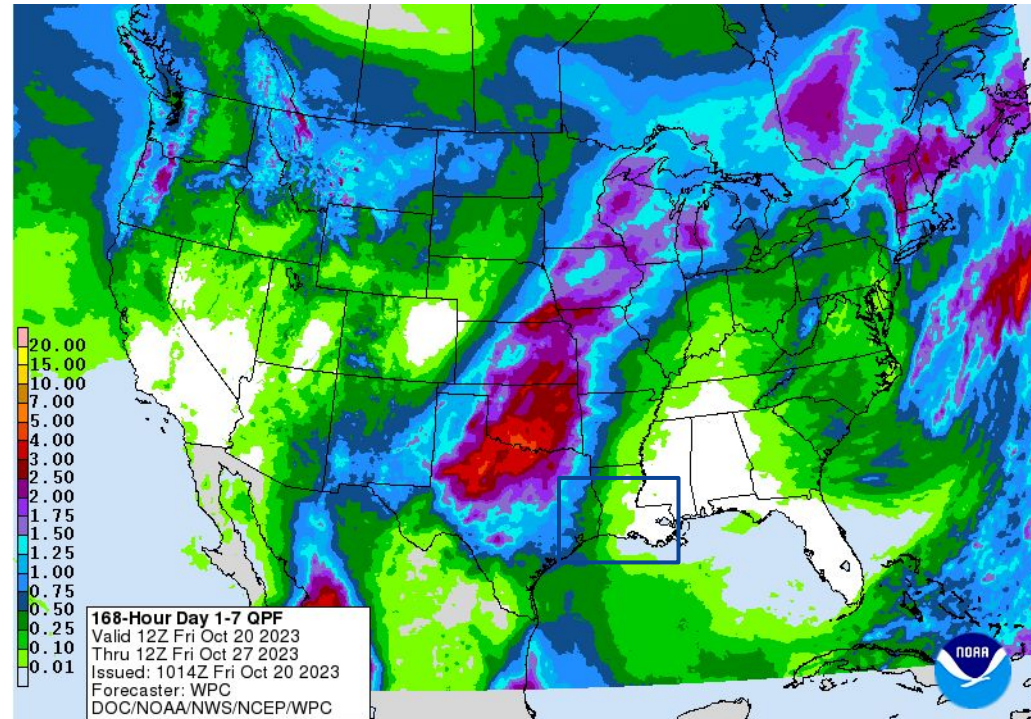


Image Caption: Weather Prediction Center [7-day precipitation forecast](#) valid Friday morning October 20 to Friday morning October 27.





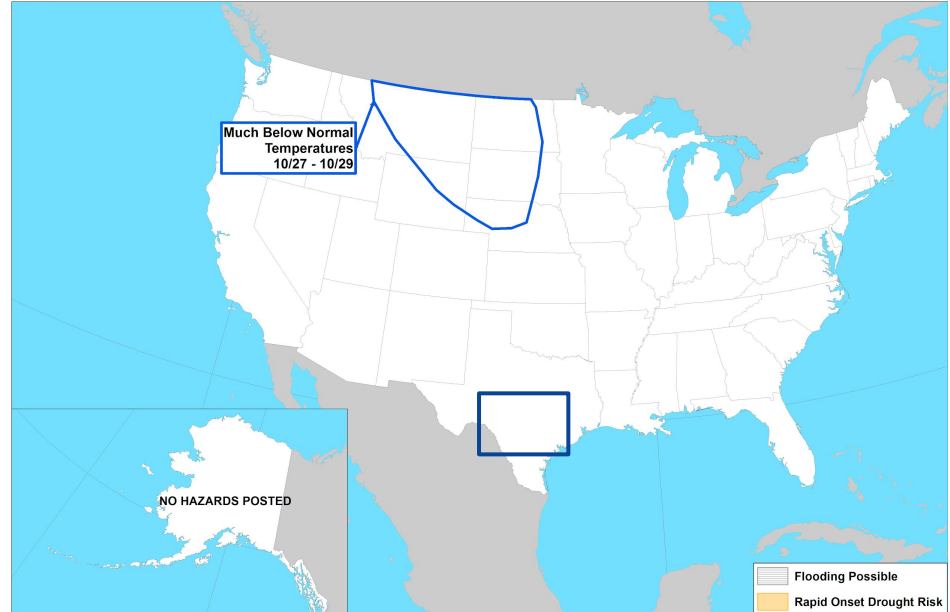
Rapid Onset Drought Outlook

Links to the latest Climate Prediction Center 8 to 14 day [Temperature Outlook](#) and [Precipitation Outlook](#).

- Summarize conditions and impacts here



Day 8-14 U.S. Hazards Outlook
Valid: 10/27/2023-11/02/2023



Climate Prediction Center
Made: 10/19/2023 3PM EDT

Follow us:
www.cpc.ncep.noaa.gov

Image Caption:
[Days 8 to 14 U.S. Hazards Outlook](#) Valid Month DD to DD.





Long-Range Outlooks

The latest monthly and seasonal outlooks can be found on the [CPC homepage](#)

- Chances favor above normal temperatures, with chances for above normal precipitation, across the entire area during the month of November.

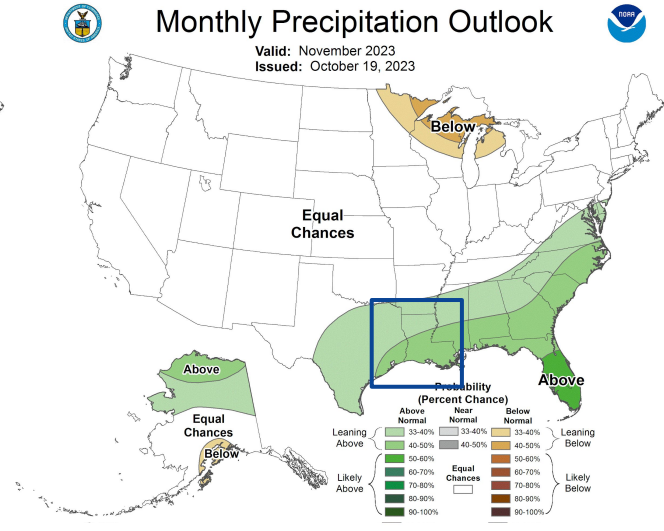
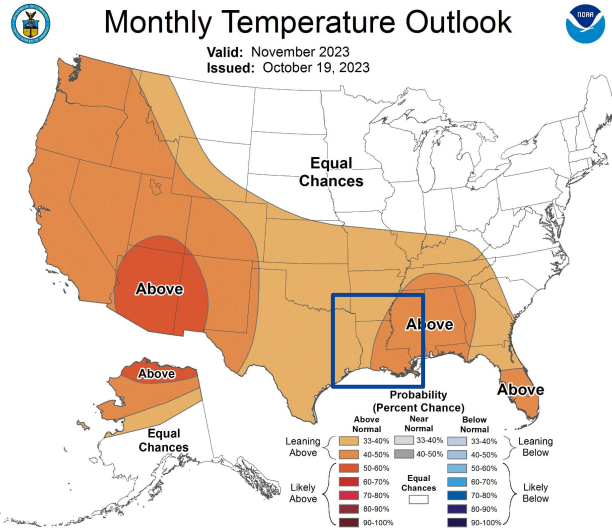


Image Captions:

Left - [Climate Prediction Center Monthly Temperature Outlook](#),

Right - [Climate Prediction Center Monthly Precipitation Outlook](#).

Valid November 2023





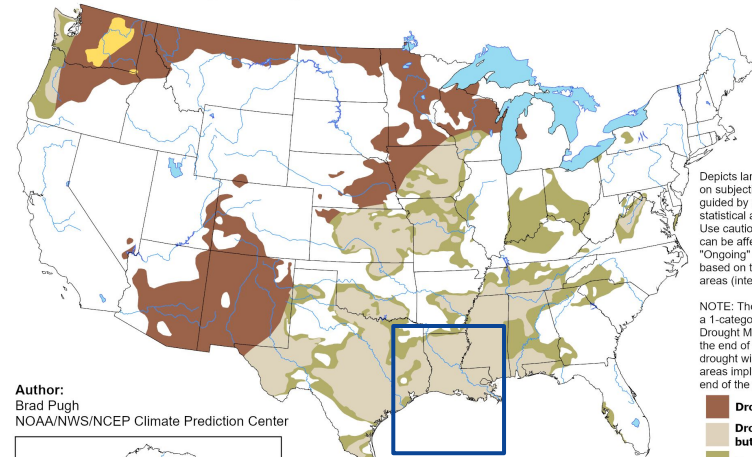
Drought Outlook

The latest monthly and seasonal outlooks can be found on the [CPC homepage](#)

- Drought conditions are expected to persist through the remainder of the year; however, some improvement is likely.

U.S. Seasonal Drought Outlook Drought Tendency During the Valid Period

Valid for October 19, 2023 - January 31, 2024
Released October 19, 2023

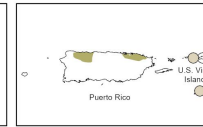
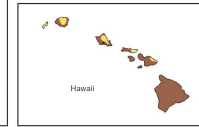
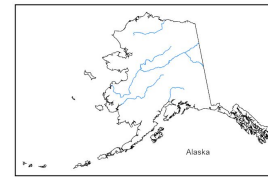


Depicts large-scale trends based on subjectively derived probabilities guided by short- and long-range statistical and dynamical forecasts. Use caution for applications that can be affected by short lived events. "Ongoing" drought areas are based on the U.S. Drought Monitor areas (intensities of D1 to D4).

NOTE: The tan areas imply at least a 1-category improvement in the Drought Monitor intensity levels by the end of the period, although drought will remain. The green areas imply drought removal by the end of the period (D0 or none).

- Drought persists
- Drought remains, but improves
- Drought removal likely
- Drought development likely
- No drought

Author:
Brad Pugh
NOAA/NWS/NCEP Climate Prediction Center



<https://go.usa.gov/3eZ73>

Image Caption:

Climate Prediction Center Monthly Drought Outlook Released October 19, 2023, valid for October 19-January 31, 2023.

Links to the latest:

[Climate Prediction Center Monthly Drought Outlook](#)

[Climate Prediction Center Seasonal Drought Outlook](#)



National Oceanic and Atmospheric Administration
U.S. Department of Commerce

National Weather Service
Lake Charles, LA