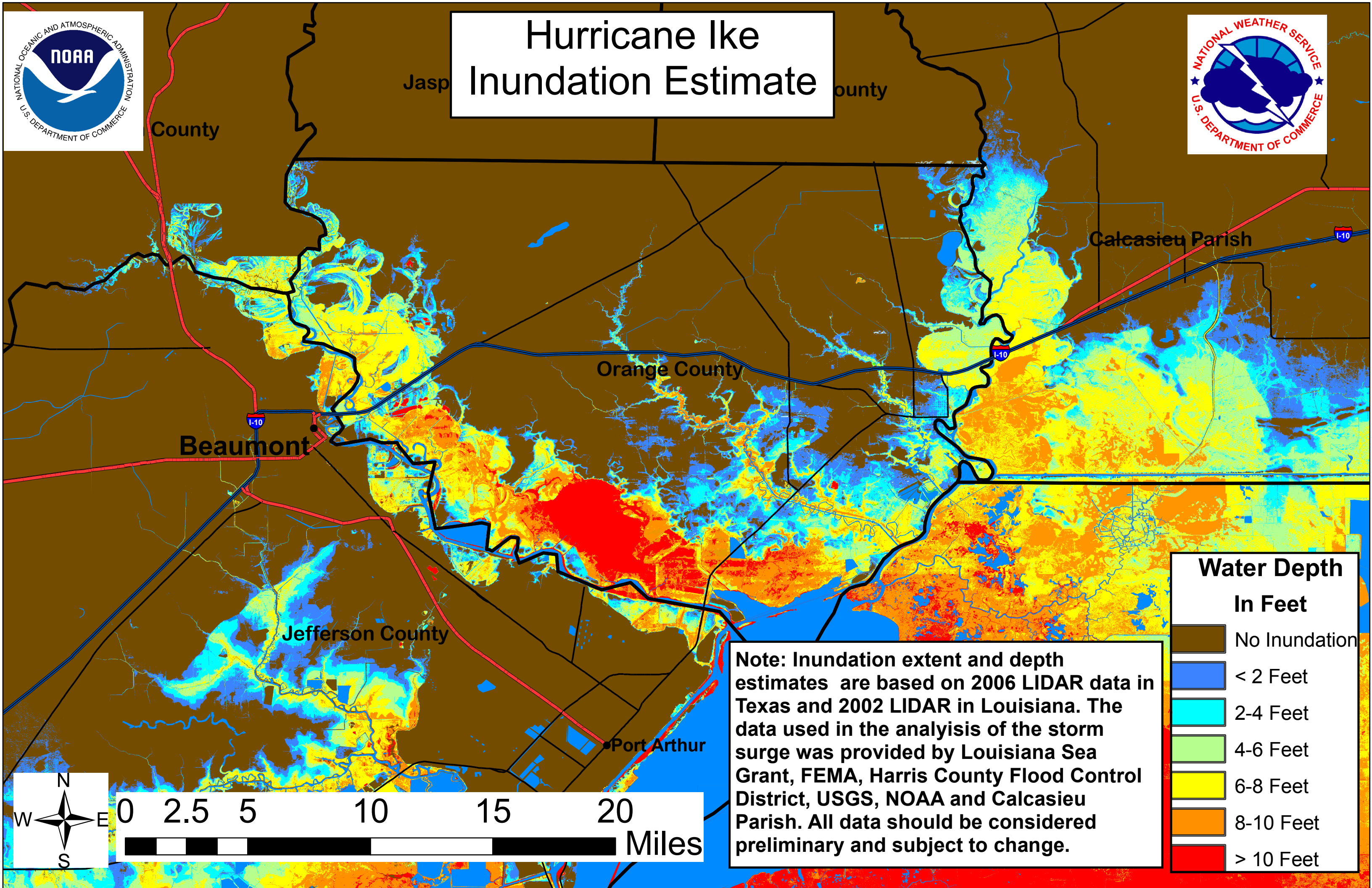


Hurricane Ike Inundation Estimate



County

Jasp County

Calcasieu Parish

Orange County

Beaumont

Jefferson County

Port Arthur

| Water Depth In Feet | |
|------------------------|---------------|
| | No Inundation |
| | < 2 Feet |
| | 2-4 Feet |
| | 4-6 Feet |
| | 6-8 Feet |
| | 8-10 Feet |
| | > 10 Feet |

Note: Inundation extent and depth estimates are based on 2006 LIDAR data in Texas and 2002 LIDAR in Louisiana. The data used in the analysis of the storm surge was provided by Louisiana Sea Grant, FEMA, Harris County Flood Control District, USGS, NOAA and Calcasieu Parish. All data should be considered preliminary and subject to change.

