



# Weekly Weather Update

2:30 PM CDT

Thursday, February 3, 2022

Stacey Denson, *NWS Lake Charles*





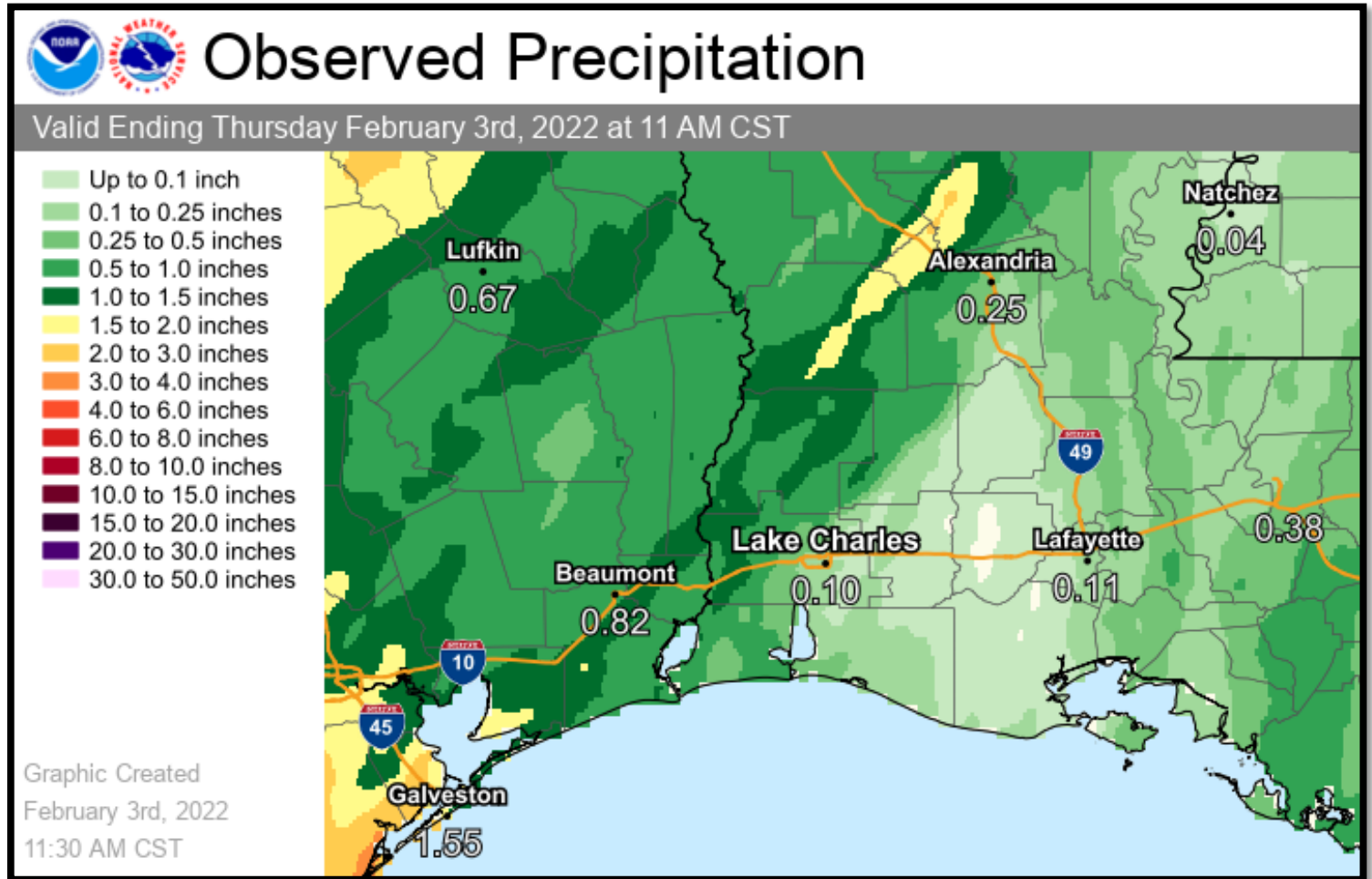
## TOP STORY:

**An arctic air mass will overspread the region today, bringing below average temps through the weekend. Mild and dry weather will continue through much of next week.**

	Low Temperatures	High Temperatures	Chance For Rain
Friday	29-34 F	42-44 F	10-25%
Saturday	25-30 F	50-52 F	<10%
Sunday	25-30 F	55-57 F	<10%
Monday	29-35 F	56-59 F	<10%
Tuesday	30-36 F	56-60 F	10%
Wednesday	30-38 F	60-62 F	10%
Thursday	34-39 F	62-65 F	<10%
Normals This Time of Year	39-45 F	62-64 F	10%-30%



A couple of frontal systems brought around a tenth of an inch to an inch of rain over the past week.

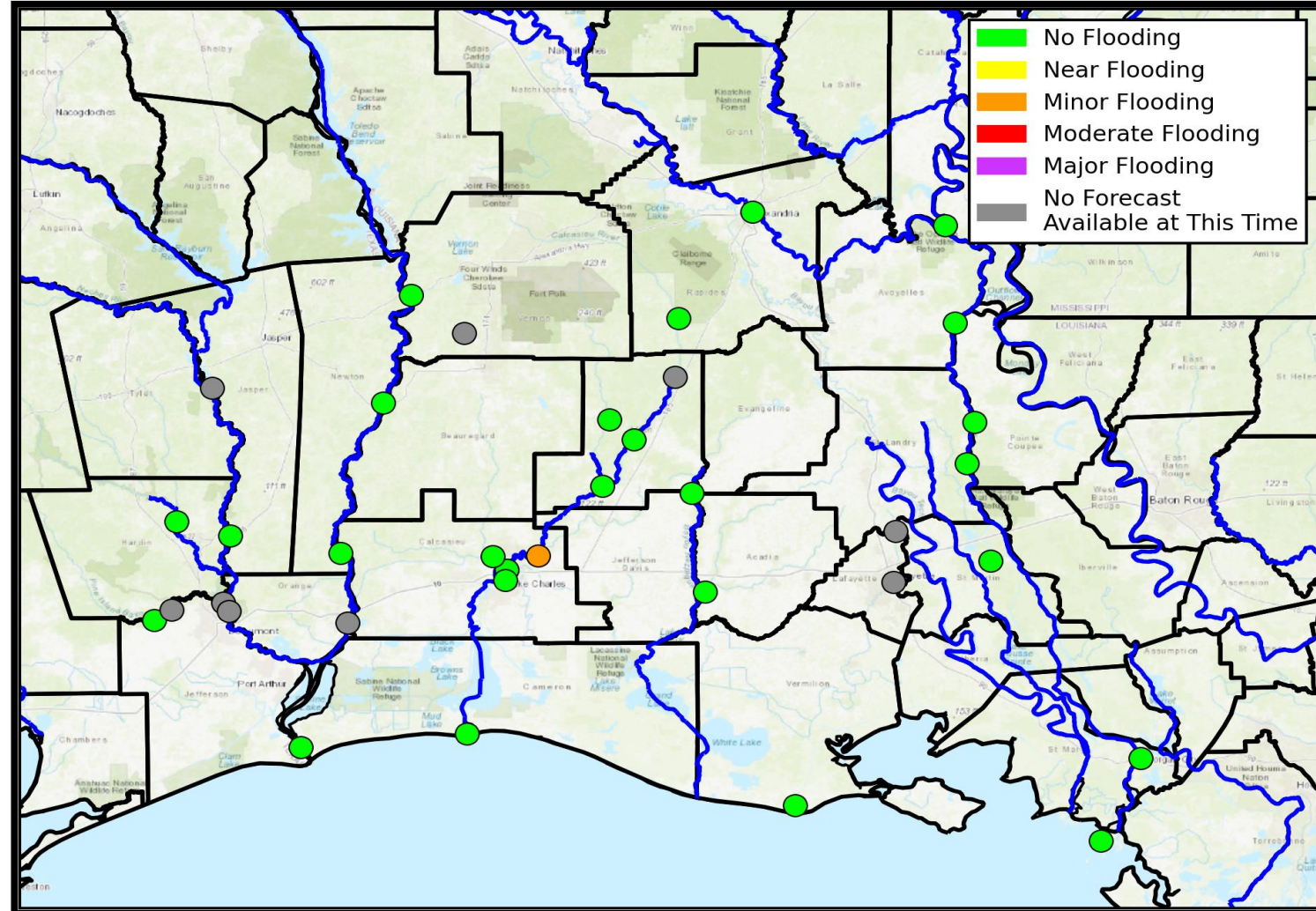


# River Forecasts



Lake Charles  
WEATHER FORECAST OFFICE

Minor flooding is occurring at the Calcasieu River near White Oak Park. Elsewhere, no river flooding is ongoing or expected to begin this week.

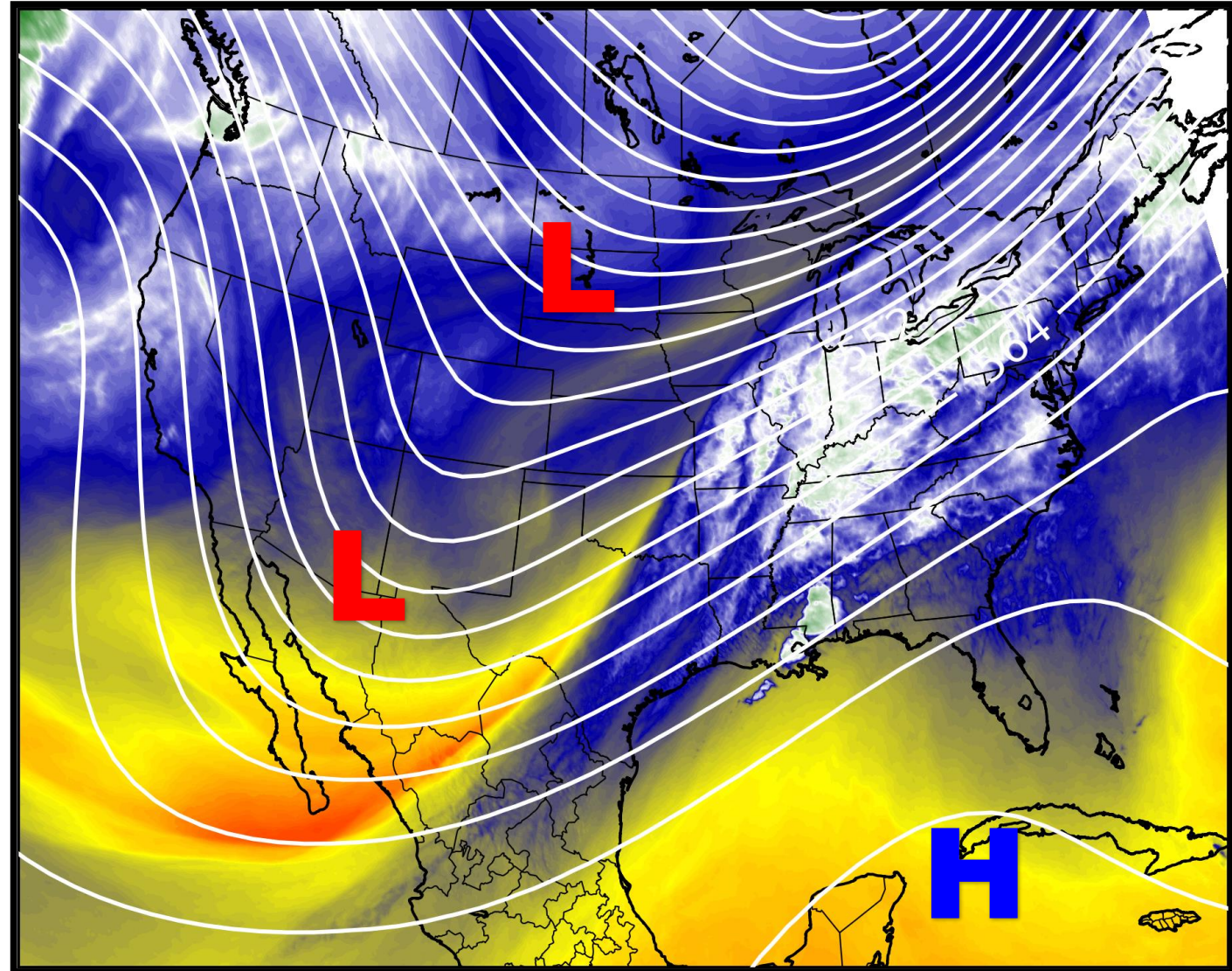


# Upper Level Steering Patterns



Lake Charles  
WEATHER FORECAST OFFICE

High pressure is over the Caribbean while a large upper level trough extends from Canada to the Desert SW. This trough is the source of the winter wx and extreme cold across the Central and Eastern US.

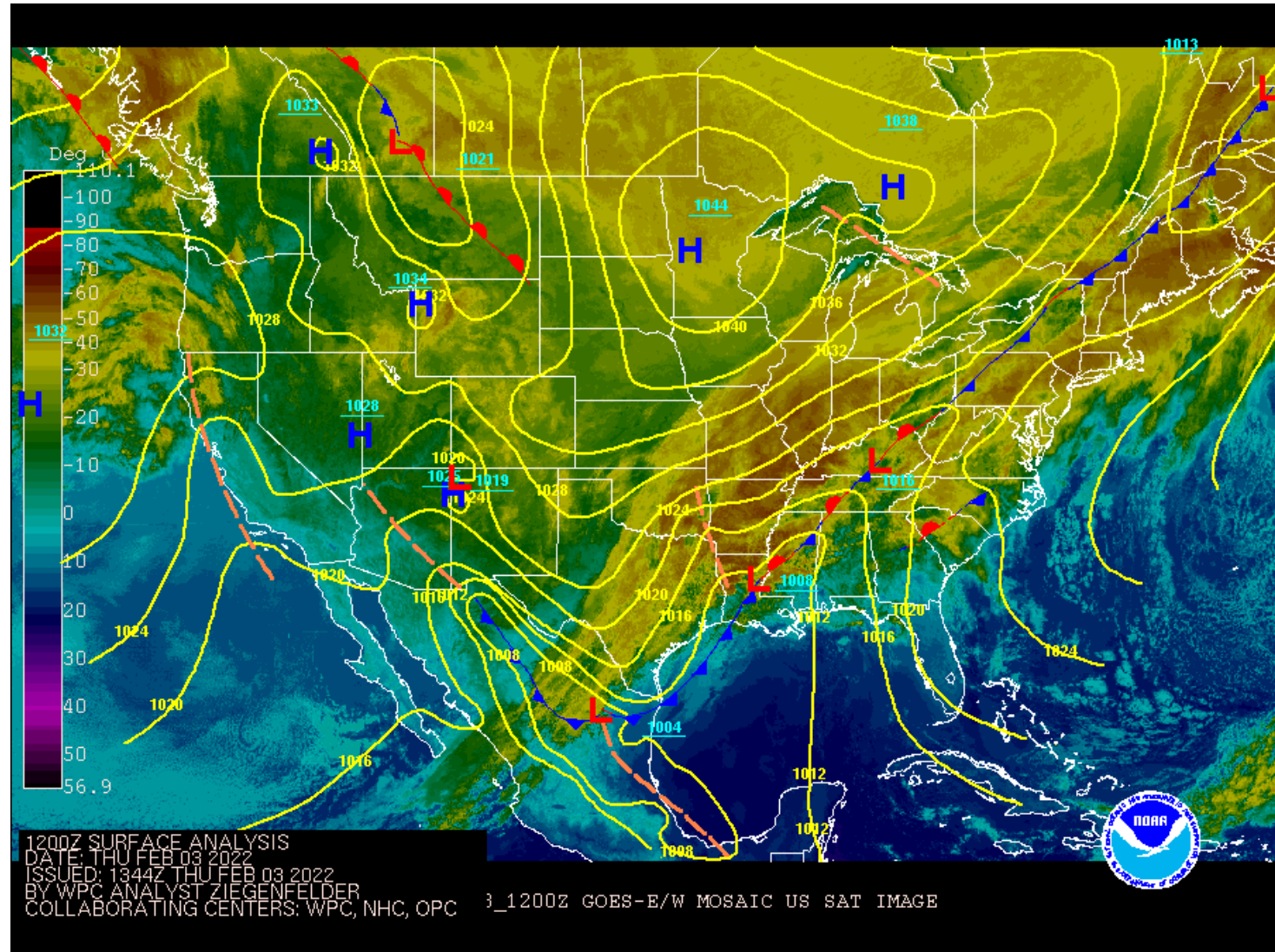


# Surface Weather Map with Fronts



Lake Charles  
WEATHER FORECAST OFFICE

A cold front extends from New England to S TX while high pressure is over the Rockies/N Plains. This front has brought a much colder airmass into SE TX/S LA over the last few hours.



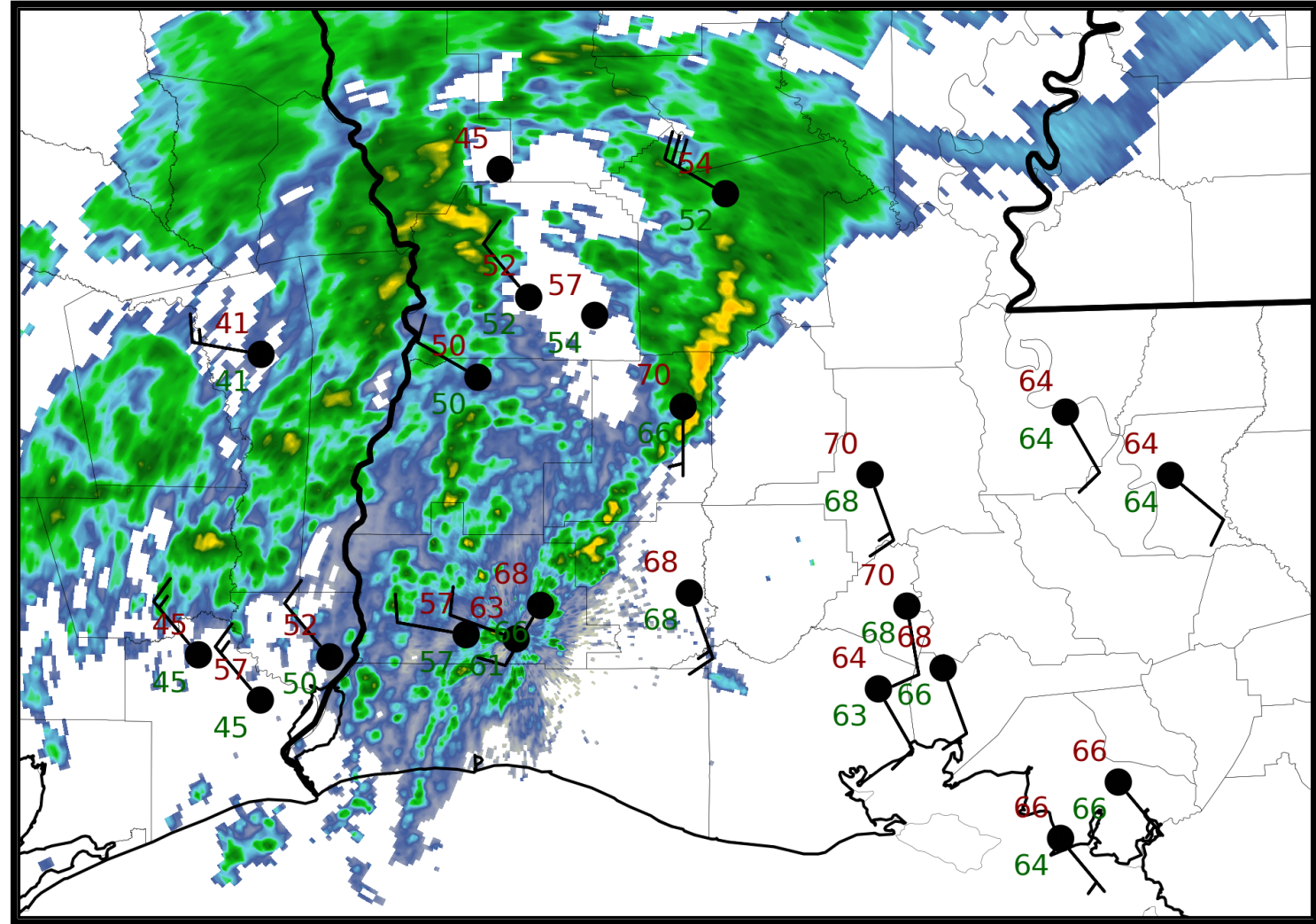
# 6 am Weather Observations



Lake Charles  
WEATHER FORECAST OFFICE

A large area of showers was seen this morning in SE TX and SW LA, associated with the passing cold front.

Temperatures were in the upper 60s ahead of the front, falling into the 40s and 50s behind it.

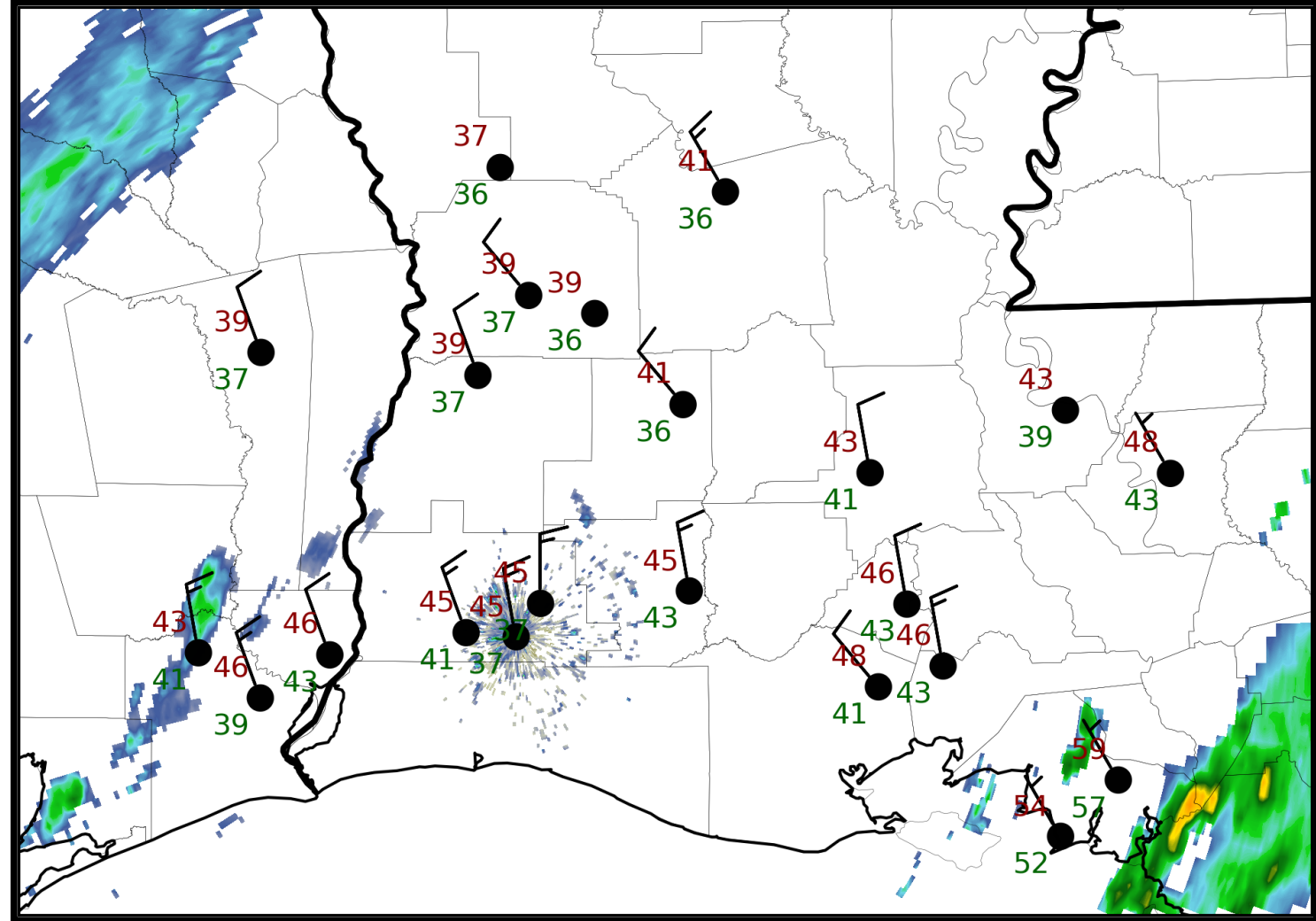


# 2 pm Weather Observations



Lake Charles  
WEATHER FORECAST OFFICE

Most of this morning's showers have cleared out of the area. Winds are breezy and out of the north, while temperatures are in the low to mid 40s.

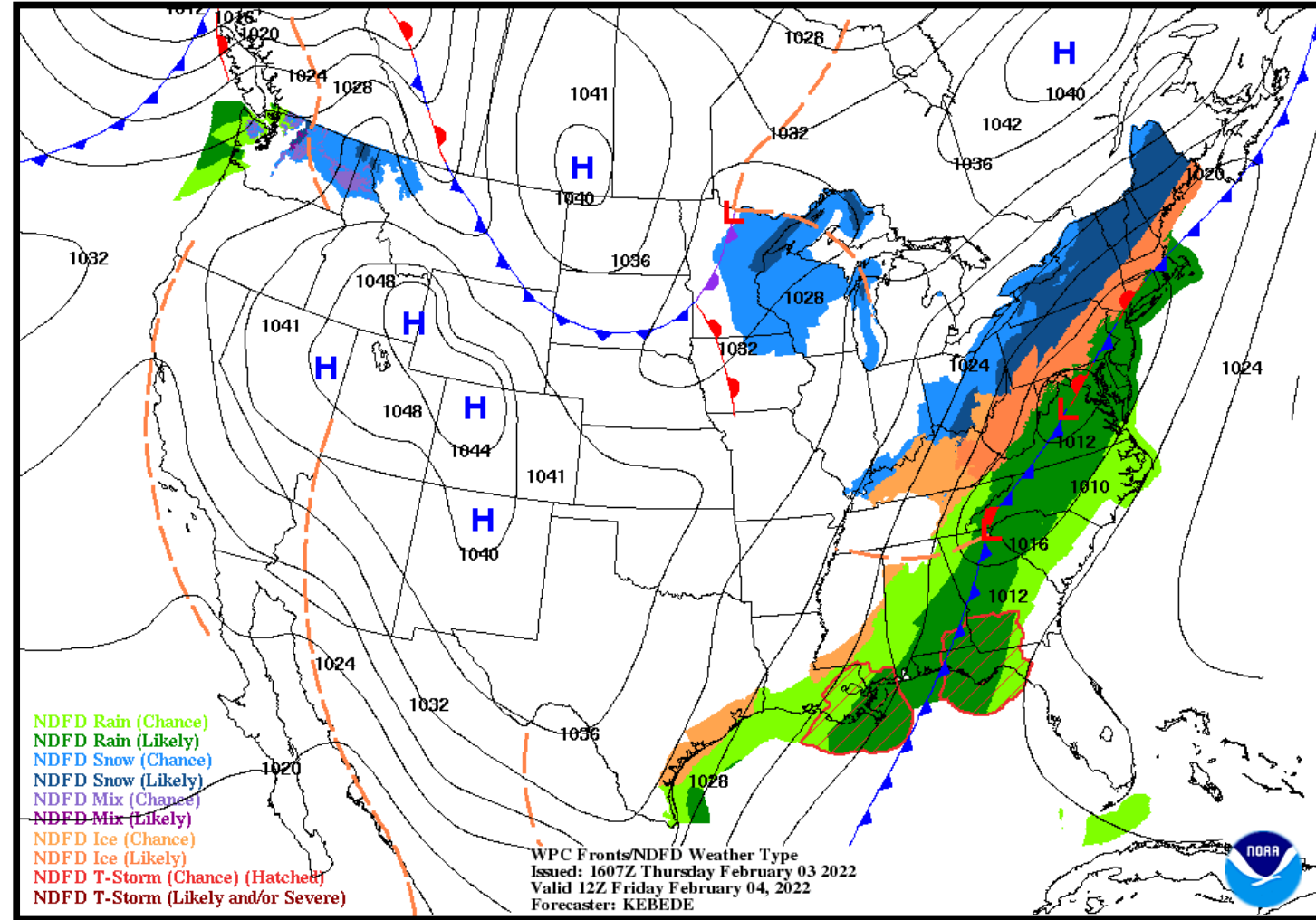






### NWS LCH REGIONAL WEATHER

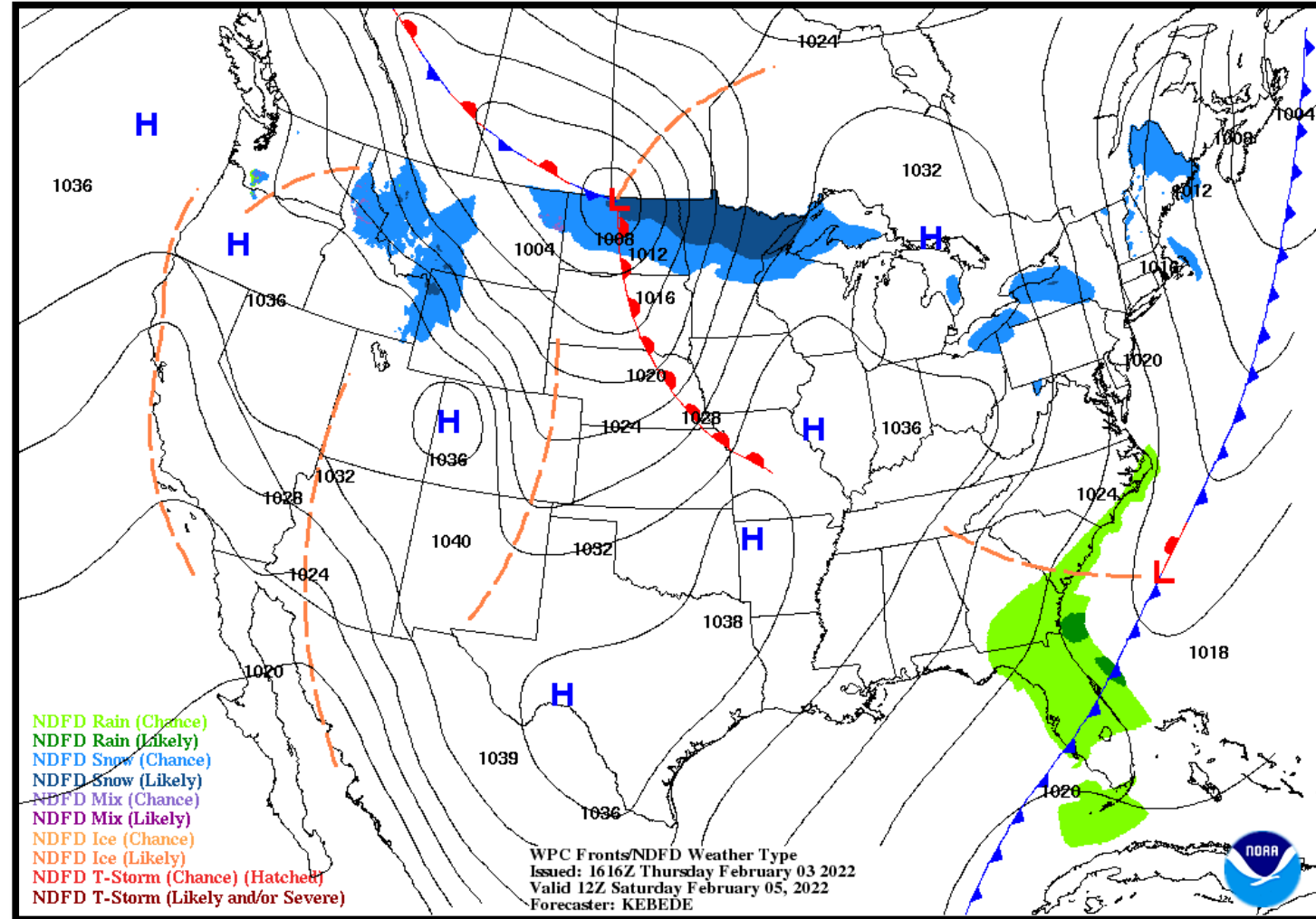
Low Temperature	29-34 F
High Temperature	42-44 F
Wind	N 10-15 mph
Rain Chances	10-25%
Weather Hazards	Showers





### NWS LCH REGIONAL WEATHER

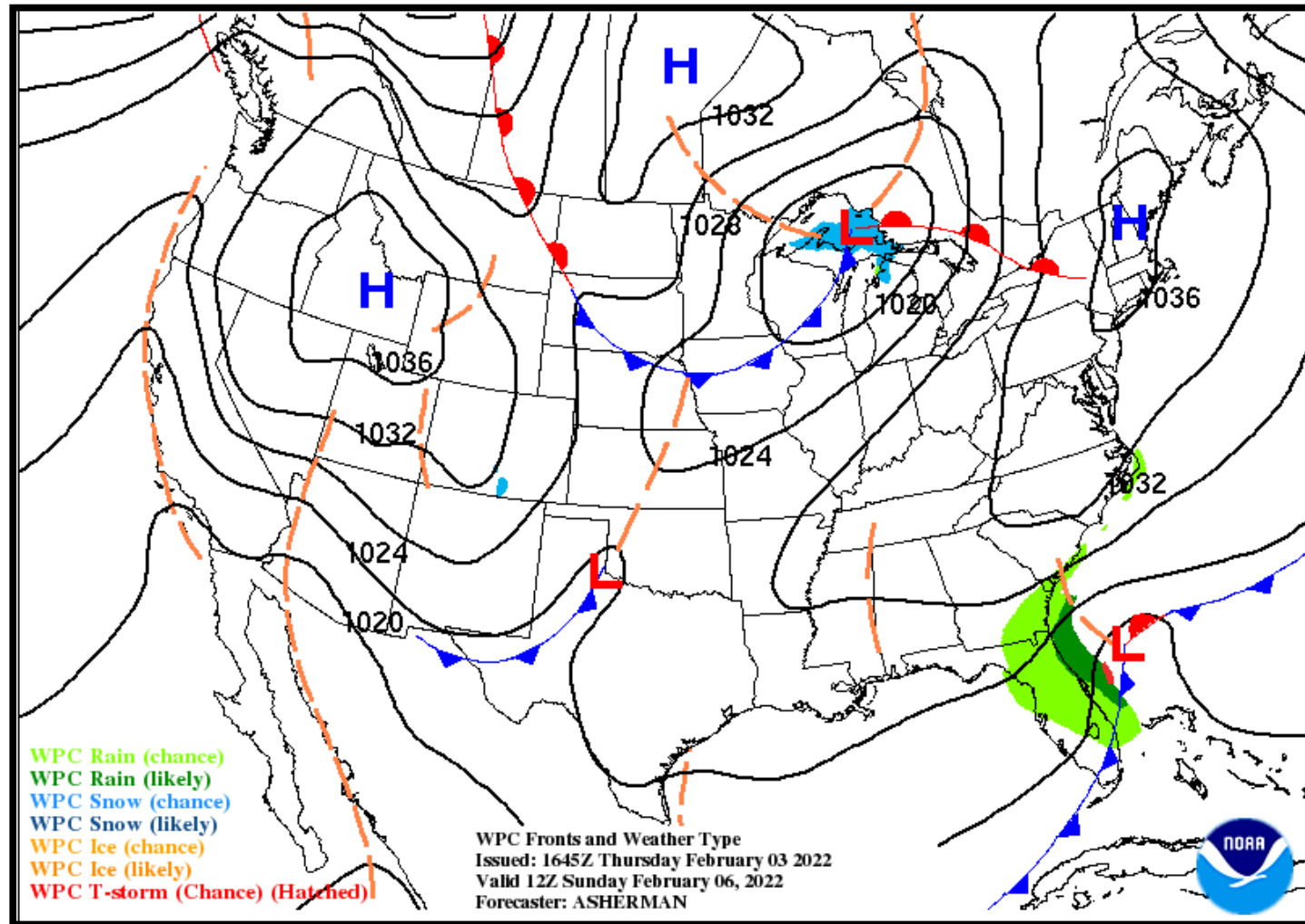
Low Temperature	25-30 F
High Temperature	50-52 F
Wind	NNE 5-10 mph
Rain Chances	<10%
Weather Hazards	None





### NWS LCH REGIONAL WEATHER

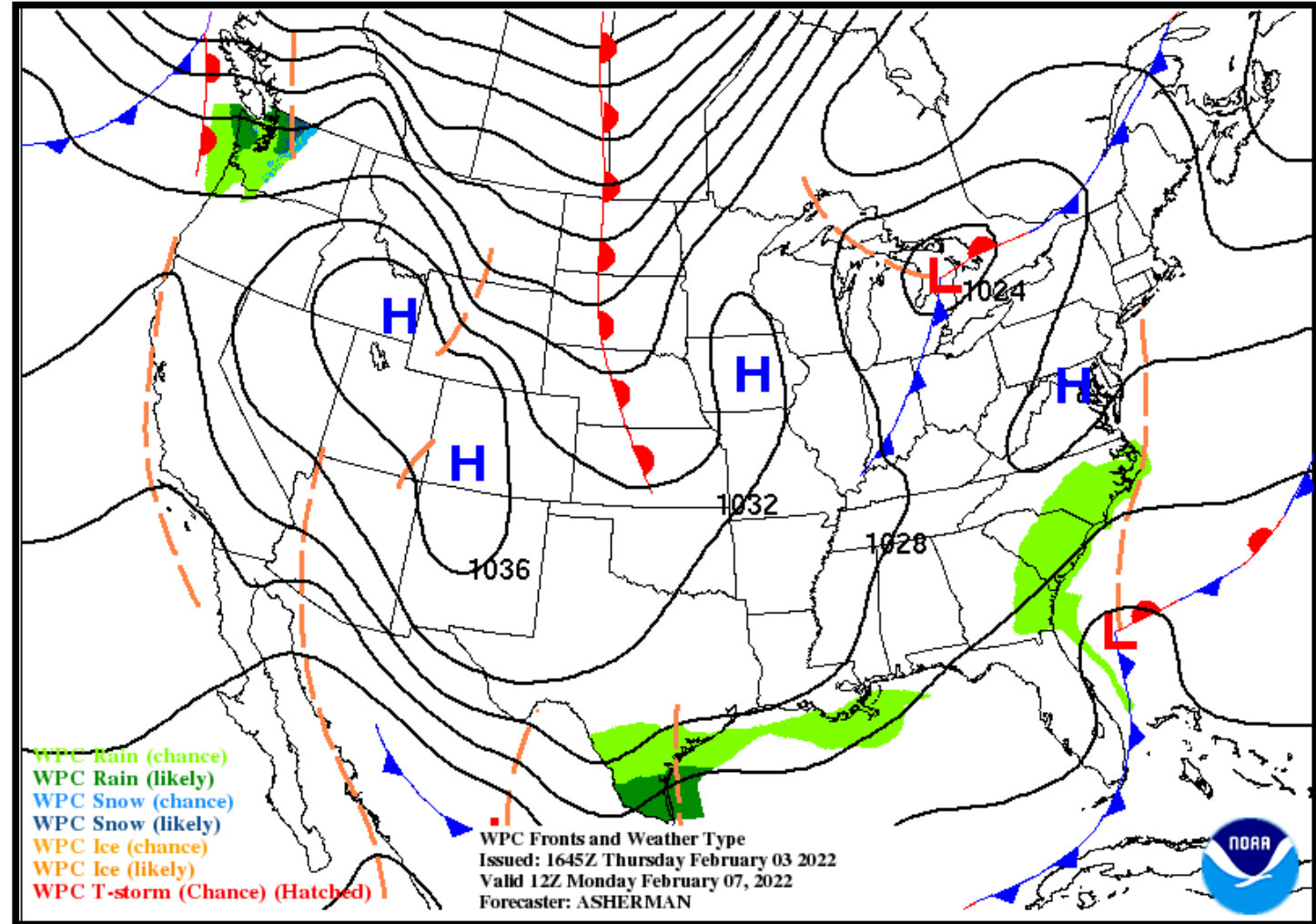
Low Temperature	25-30 F
High Temperature	55-57 F
Wind	NNE 5-10 mph
Rain Chances	<10%
Weather Hazards	None





### NWS LCH REGIONAL WEATHER

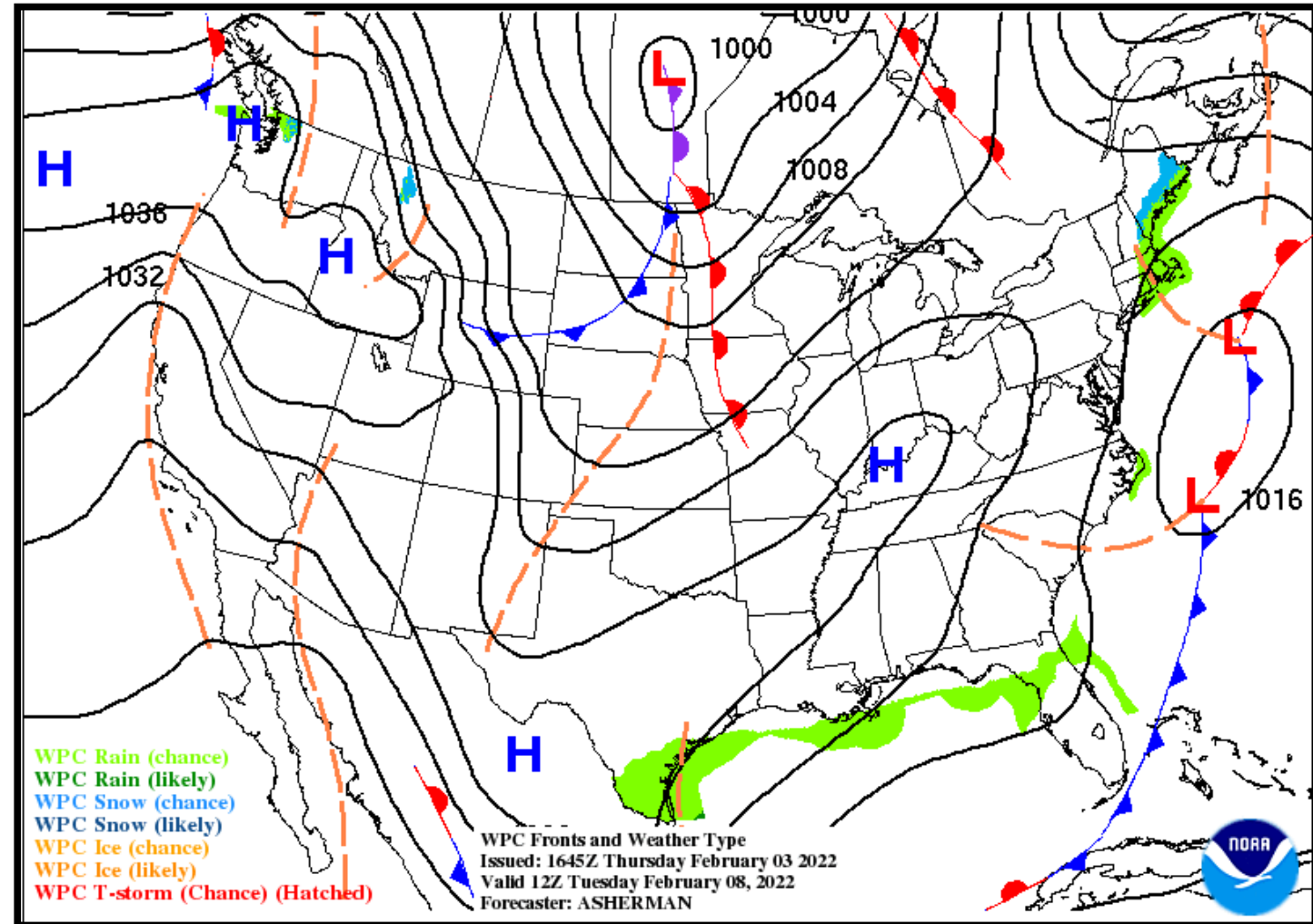
Low Temperature	29-35 F
High Temperature	56-59 F
Wind	N 5-10 mph
Rain Chances	<10%
Weather Hazards	None





### NWS LCH REGIONAL WEATHER

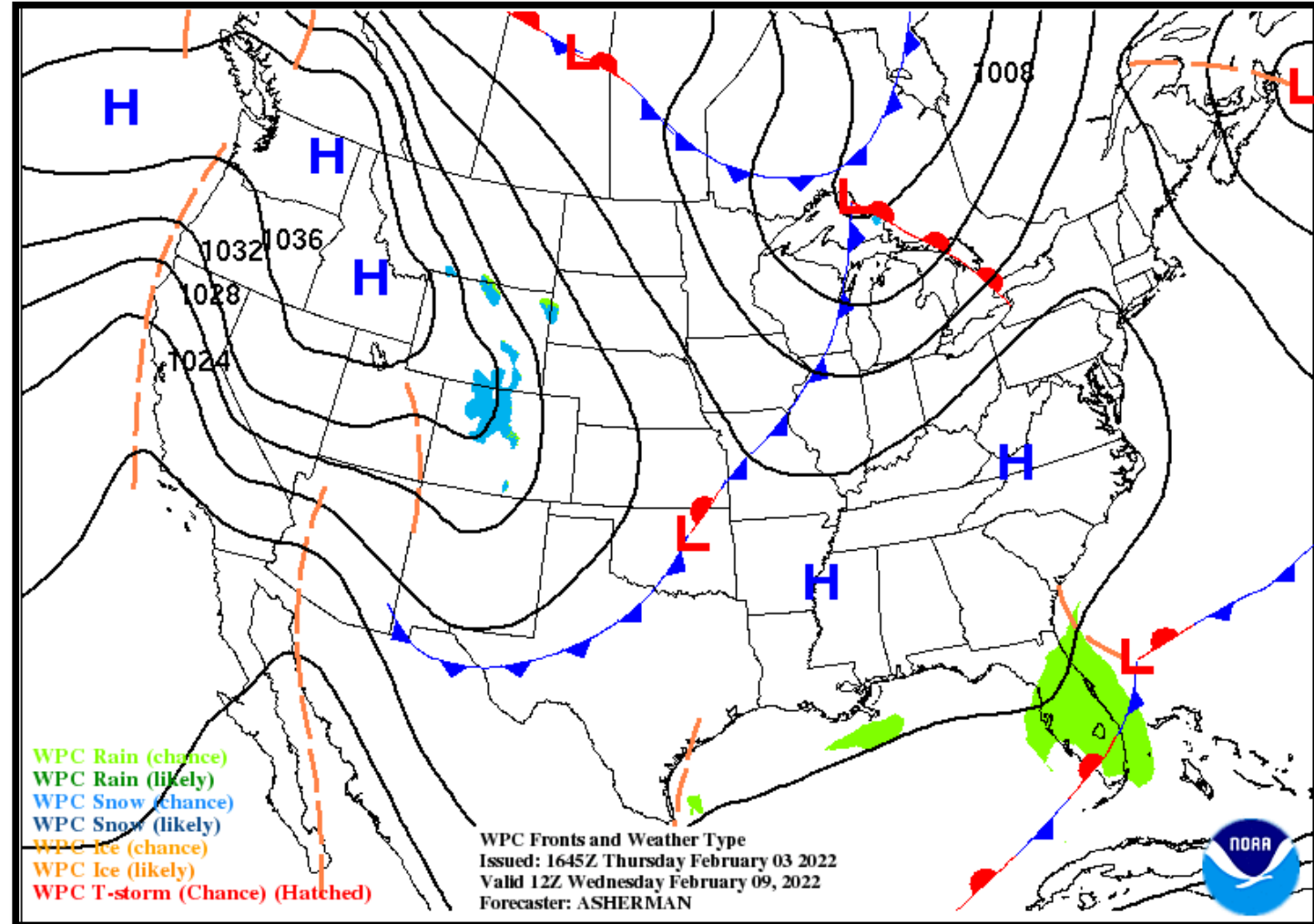
Low Temperature	30-36 F
High Temperature	56-60 F
Wind	NNE 5-10 mph
Rain Chances	10%
Weather Hazards	None





### NWS LCH REGIONAL WEATHER

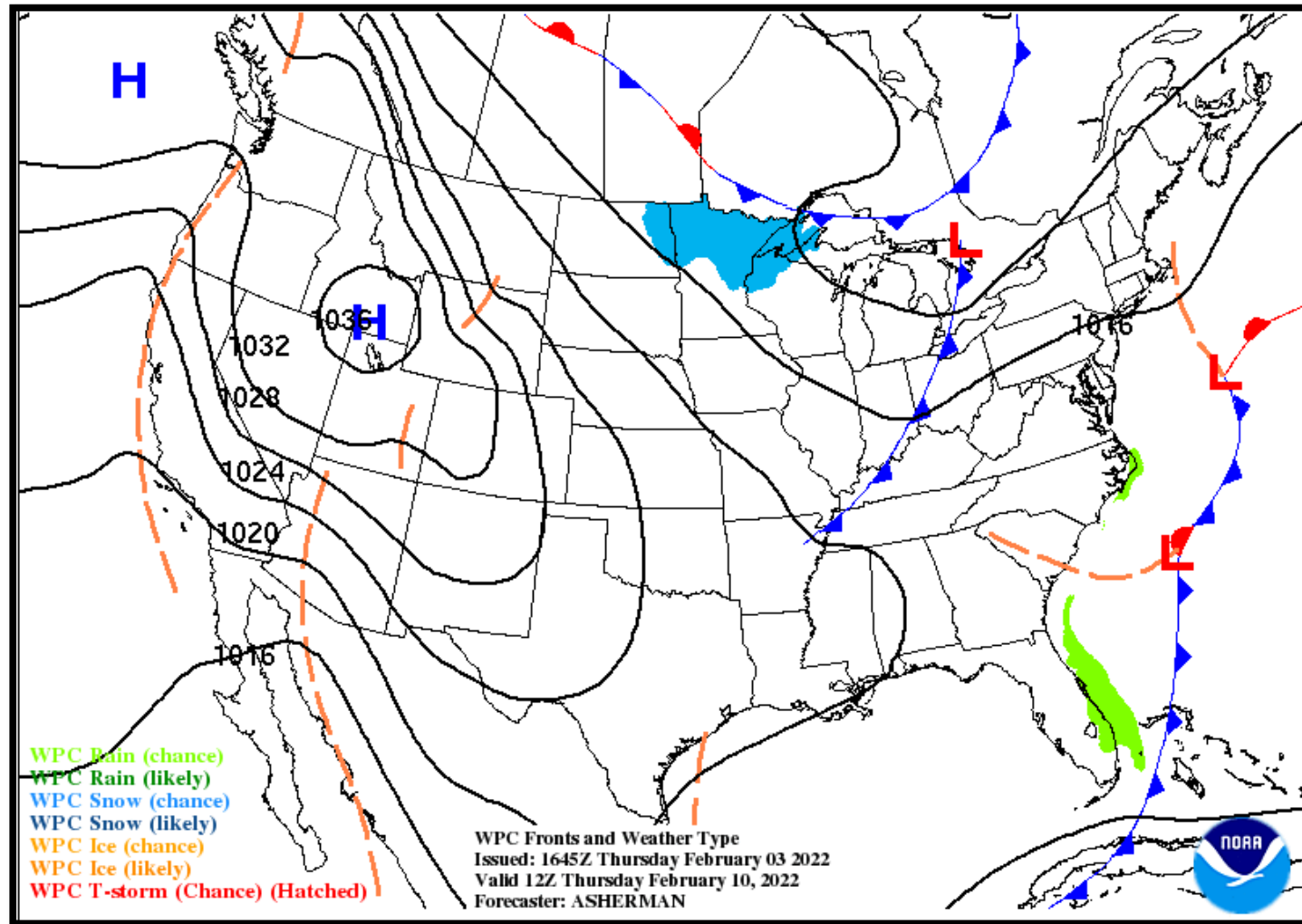
Low Temperature	30-38 F
High Temperature	60-62 F
Wind	NNE 5-10 mph
Rain Chances	10%
Weather Hazards	None





### NWS LCH REGIONAL WEATHER

Low Temperature	34-39 F
High Temperature	62-65 F
Wind	N 5-10 mph
Rain Chances	<10%
Weather Hazards	None



# Weekly Weather Summary Table



Lake Charles  
WEATHER FORECAST OFFICE

Color Codes Except for Temperatures	Weather	Friday 02/04/22	Saturday 02/05/22	Sunday 02/06/22	Monday 02/07/22	Tuesday 02/08/22	Wednesday 02/09/22	Thursday 02/10/22
Yellow = Low Threat	Rain Total	<0.10"	None	None	None	<0.10"	None	None
Orange = Moderate Threat	T-Storm/ Lightning							
Red = High Threat	Tornado/Hail/ Dmg Wind	None	None	None	None	None	None	None
	Wind	N 10-15 mph	NNE 5-10 mph	NNE 5-10 mph	N 5-10 mph	NNE 5-10 mph	NNE 5-10 mph	N 5-10 mph
	Tides	<b>Above Normal</b>	<b>Above Normal</b>	<b>Above Normal</b>	<b>Above Normal</b>	Near Normal	Near Normal	Near Normal
	Wave Height	<b>Near: 1-4 ft Off: 5-7 ft</b>	<b>Near: 1-4 ft Off: 5-7 ft</b>	Near: 0-1 ft Off: 2-3 ft	<b>Near: 1-2 ft Off: 3-4 ft</b>	<b>Near: 1-2 ft Off: 3-4 ft</b>	<b>Near: 1-2 ft Off: 3-4 ft</b>	<b>Near: 1-2 ft Off: 3-4 ft</b>
	Temperature	<b>Low: 29-34 F</b>	<b>Low: 25-30 F</b>	<b>Low: 25-30 F</b>	<b>Low: 29-35 F</b>	<b>Low: 30-36 F</b>	<b>Low: 30-38 F</b>	<b>Low: 34-39 F</b>
	Normal Low: 39-45 F Normal High: 62-64 F	<b>High: 42-44 F</b>	<b>High: 50-52 F</b>	<b>High: 55-57 F</b>	<b>High: 56-59 F</b>	<b>High: 56-60 F</b>	High: 60-62 F	High: 62-65 F
<b>Color Codes For Temperatures</b>								
Yellow=5 F above normal								
Orange=10 F above normal								
Red=15 F above normal								
Vry Lt Blue=5 F below normal								
Lt Blue=10 F below normal								
Blue=15 F below normal								





- A very cold air mass will overspread the region today/tonight, bringing below average temperatures through the weekend into early next week.
- A few showers will linger this afternoon into early tomorrow, with dry weather expected thereafter through the end of the forecast period.

