



# Weekly Weather Update

2:30 PM CDT  
Thursday, March 24, 2022

Seth Warthen, *NWS Lake Charles*





## TOP STORY:

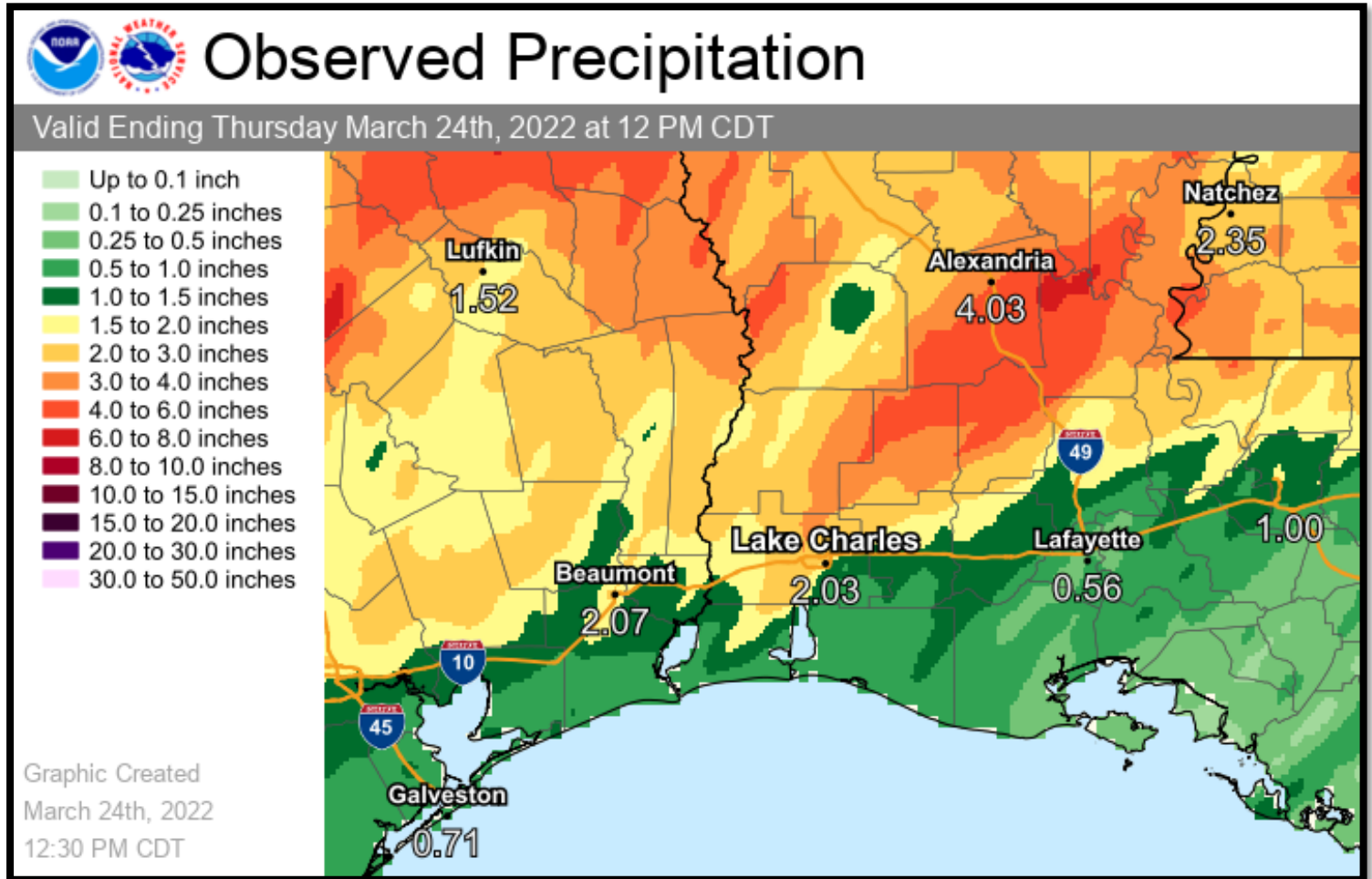
**A fairly benign weather pattern with gradual warmup into next week.**

**Next appreciable chance of rain not expected until Wednesday.**

	<b>Low Temperatures</b>	<b>High Temperatures</b>	<b>Chance For Rain</b>
Friday	41-46 F	72-78 F	<10%
Saturday	46-51 F	75-79 F	<10%
Sunday	47-54 F	78-81 F	<10%
Monday	54-60 F	79-84 F	<10%
Tuesday	60-63 F	81-84 F	<10%
Wednesday	61-64 F	76-82 F	50-70%
Thursday	52-59 F	73-79 F	15-25%
Normals This Time of Year	49-55 F	73-75 F	25%-35%

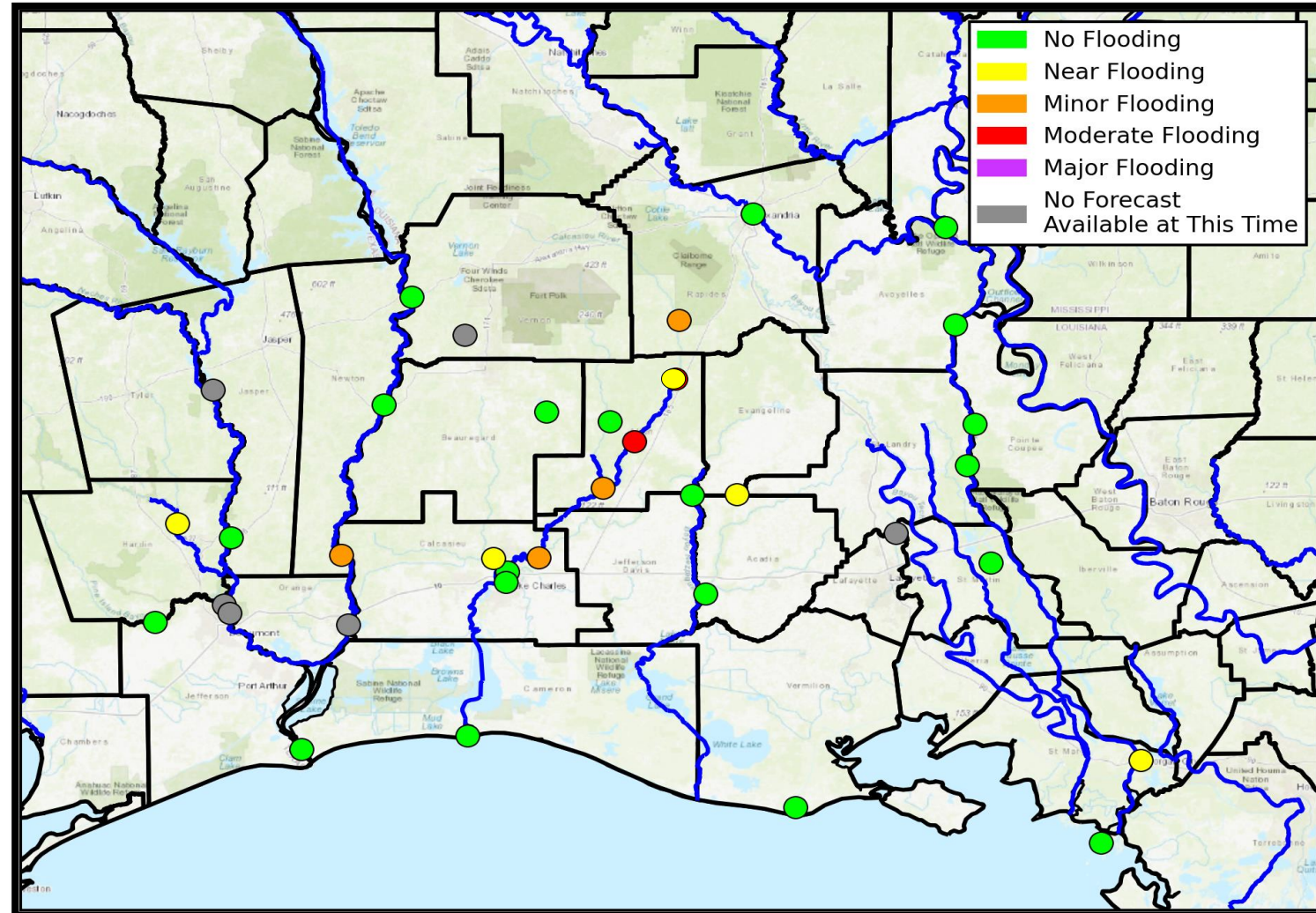
Widespread thunderstorms associated with Tuesday's system resulted in moderate rainfall across much of the region.

Some areas received upwards of 4" where rain was more prolonged.



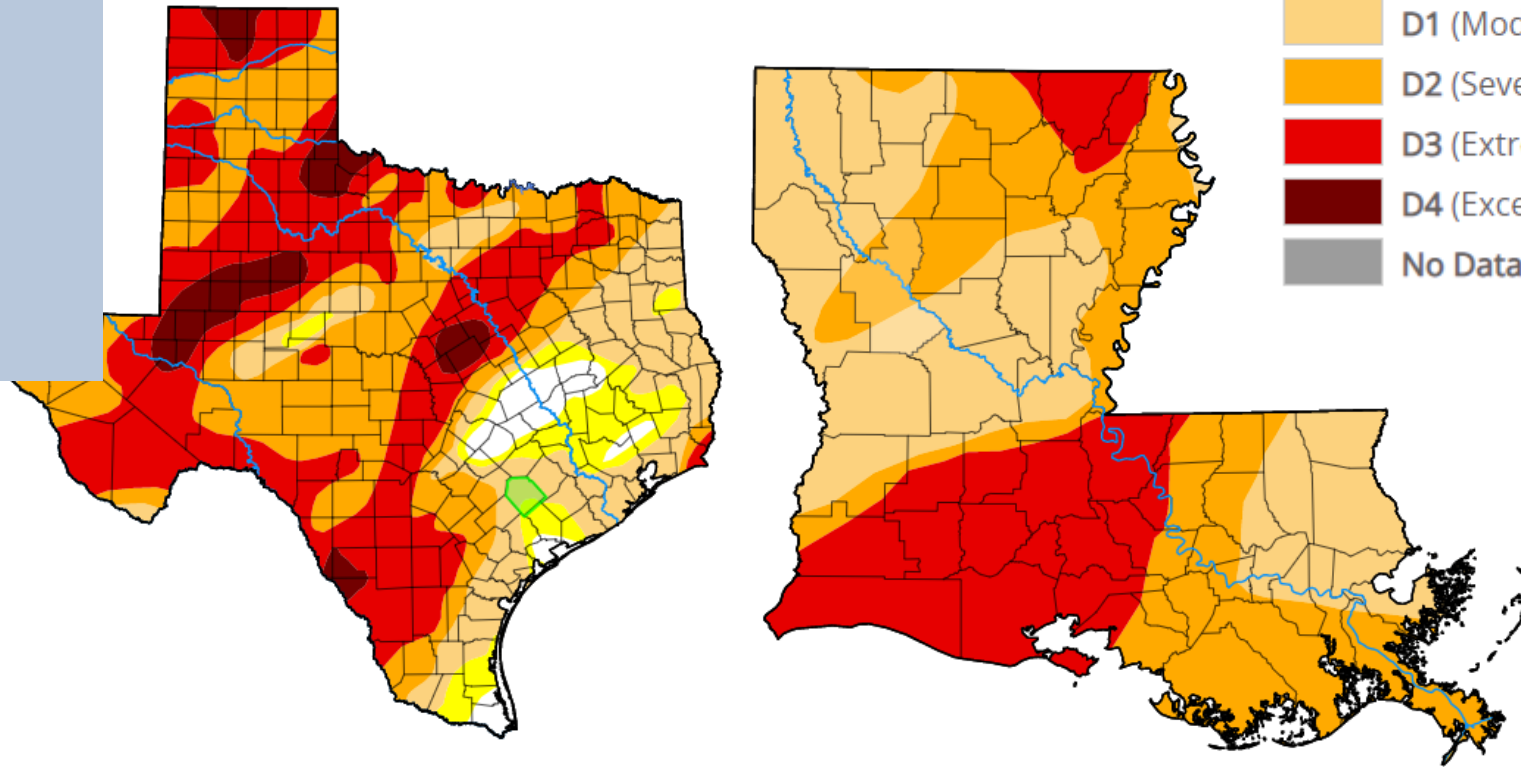
Due to the recent rainfall, many points along the Calcasieu River are at or forecast to rise to minor flood stage. Oberlin is forecast to rise to moderate w/ a crest near 15.5 ft Saturday.

The Sabine River near Deweyville is forecast to soon rise to minor flood stage as well.





Despite the recent rainfall, drought conditions persist across the vast majority of the forecast region.

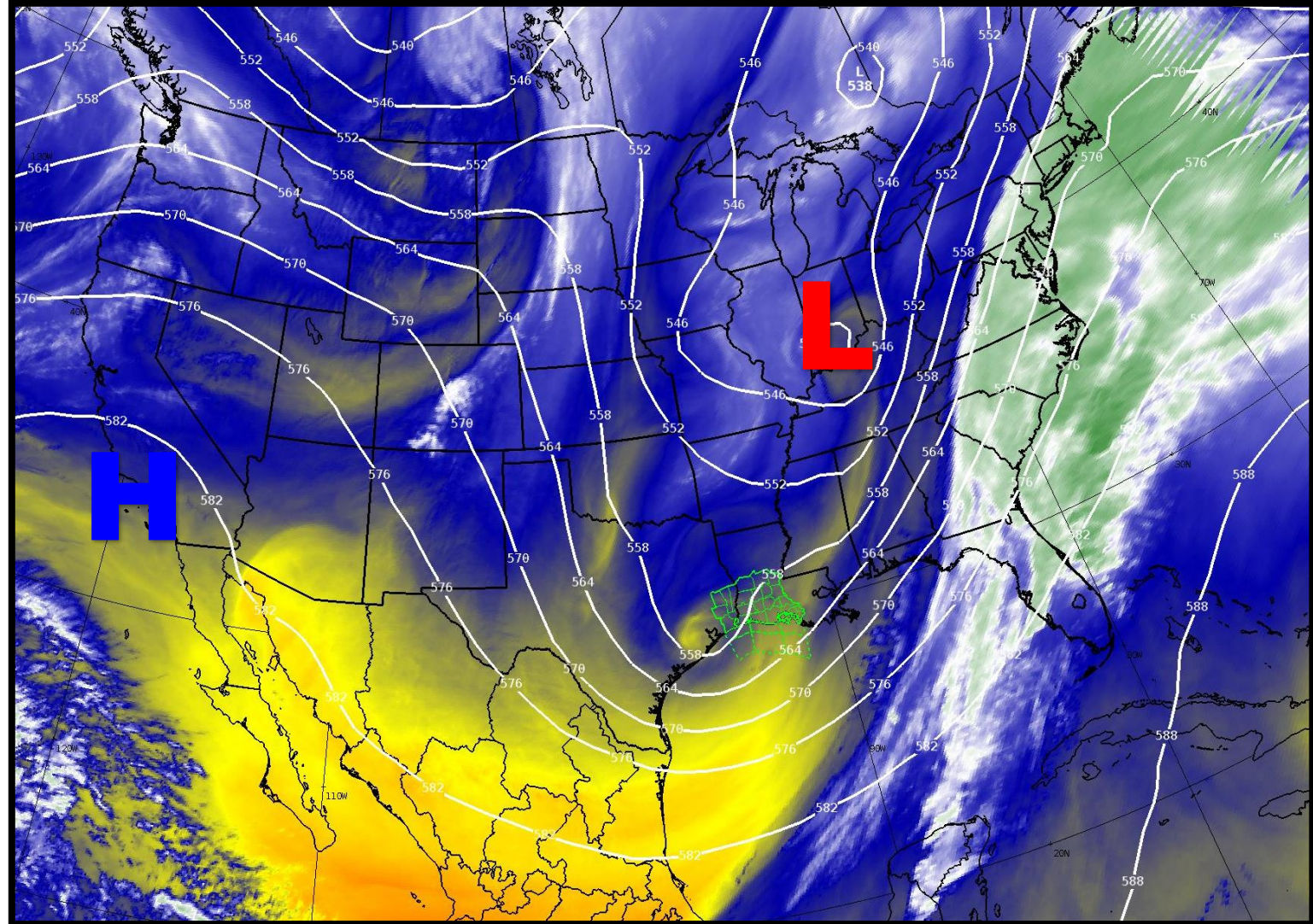


# Upper Level Steering Patterns



Lake Charles  
WEATHER FORECAST OFFICE

A broad upper level trough is situated over much of the eastern U.S. while broad surface ridging develops over the western U.S.



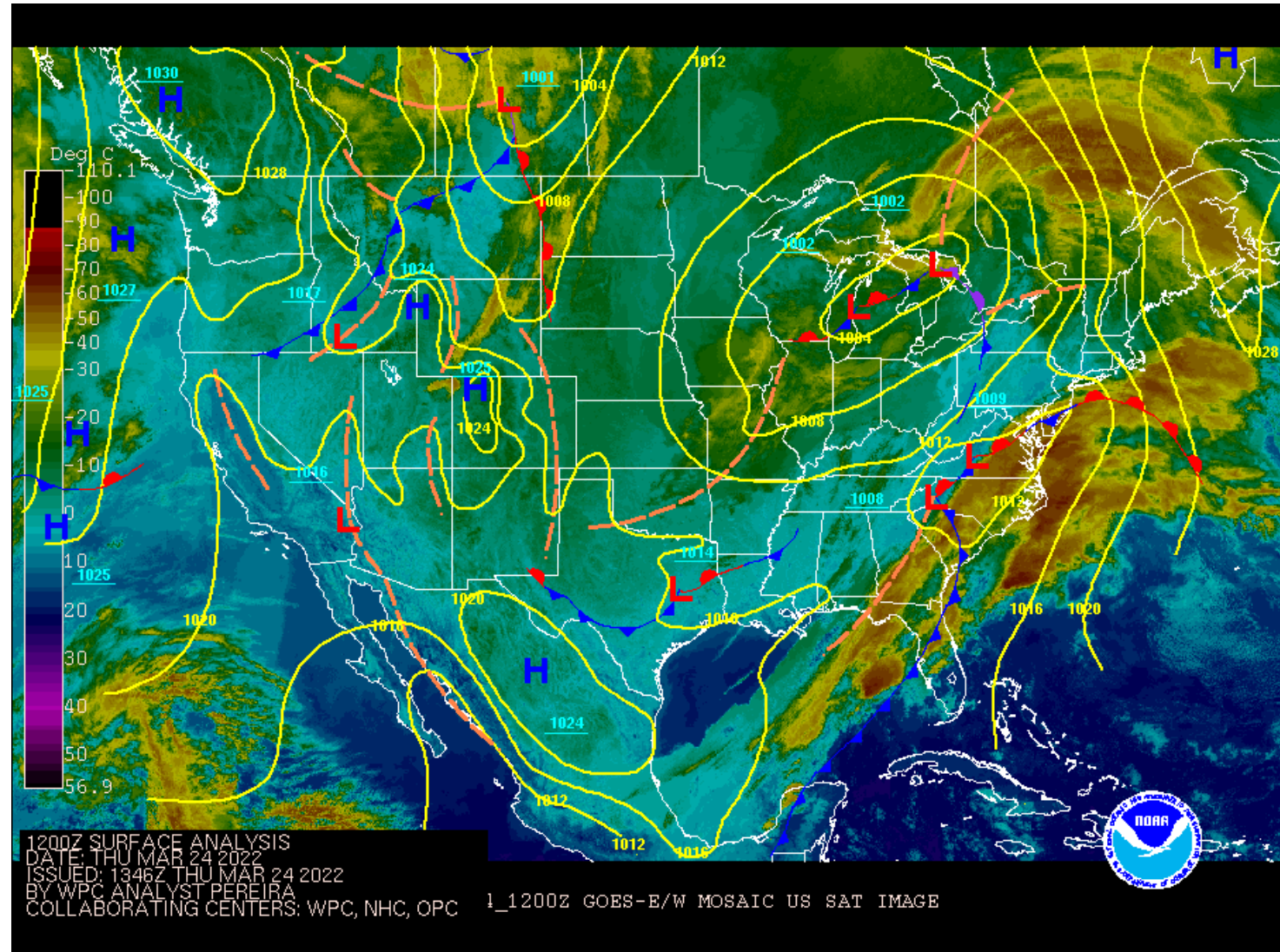
# Surface Weather Map with Fronts



Lake Charles  
WEATHER FORECAST OFFICE

A weak surface trough is moving through Louisiana today, with high pressure to build in behind it.

A more notable surface low and associated fronts are working into the NE U.S.

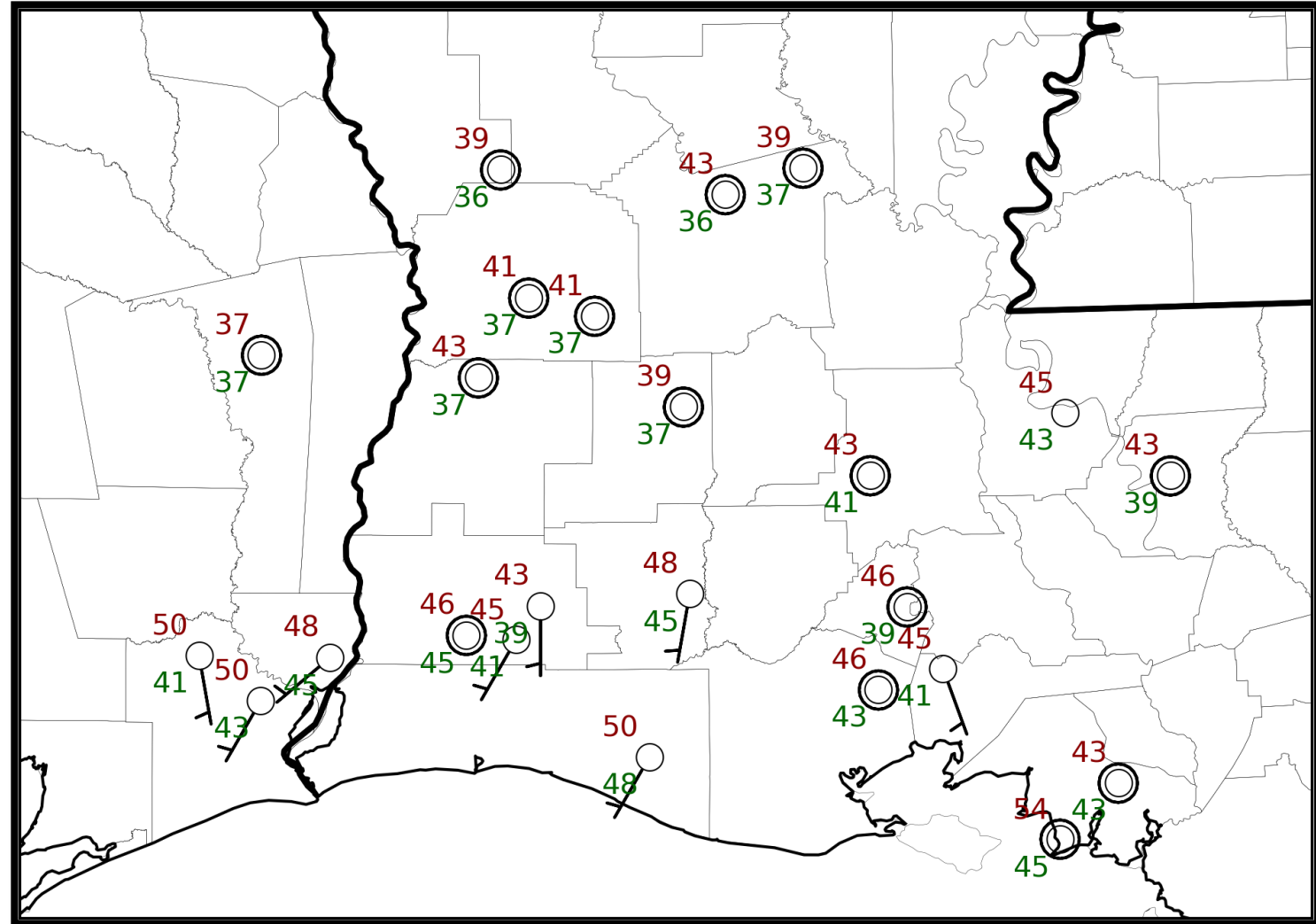


# 6 am Weather Observations



Lake Charles  
WEATHER FORECAST OFFICE

Cool and mostly calm conditions were observed this morning, along with clear skies.



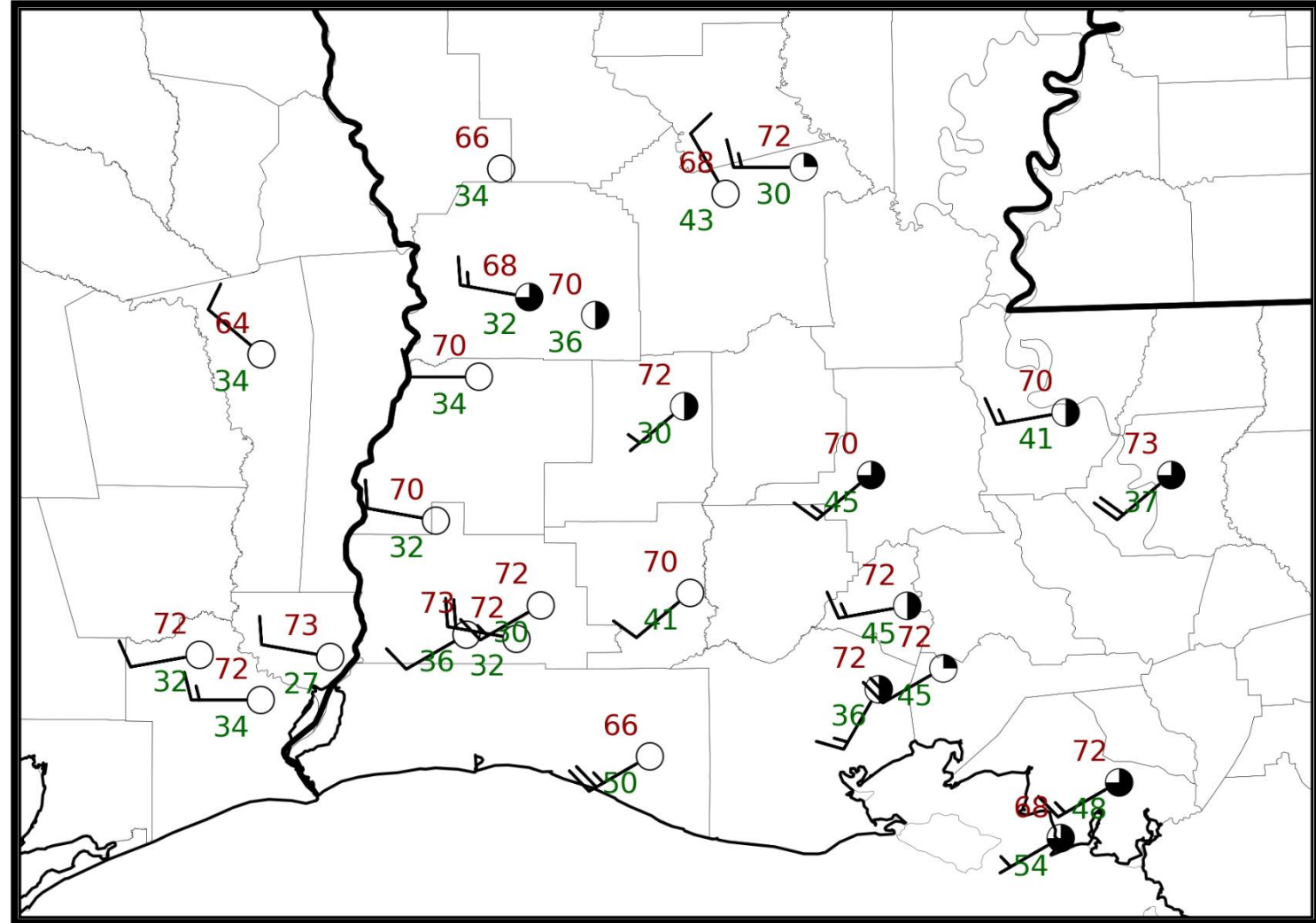


# 2 pm Weather Observations



Lake Charles  
WEATHER FORECAST OFFICE

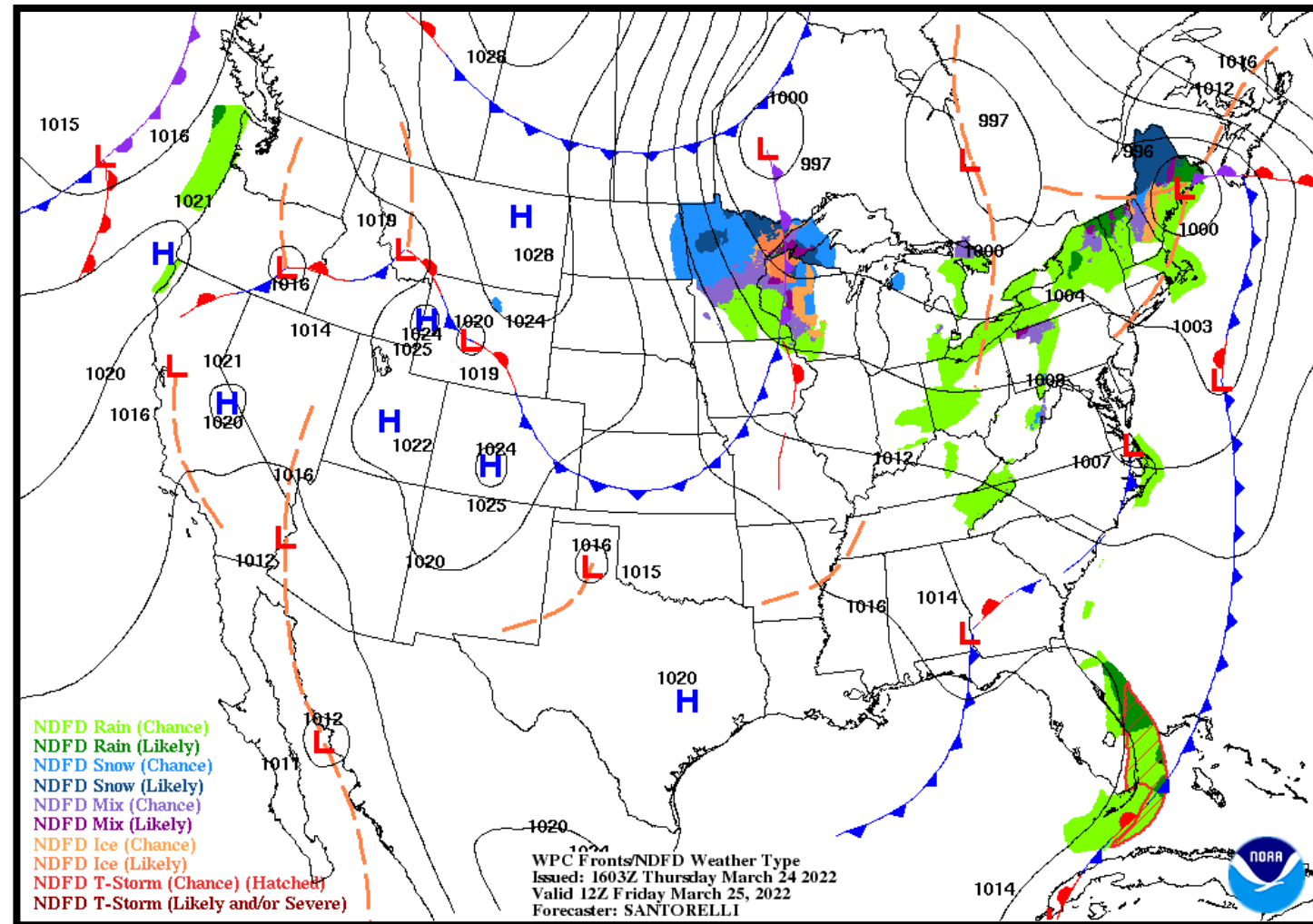
A dry surface trough is working through the region this afternoon. Scattered clouds have developed over Lower Acadiana as a result. Additionally, this has resulted in gusty winds out of the west/southwest. Temperatures remain slightly below seasonal normal.





### NWS LCH REGIONAL WEATHER

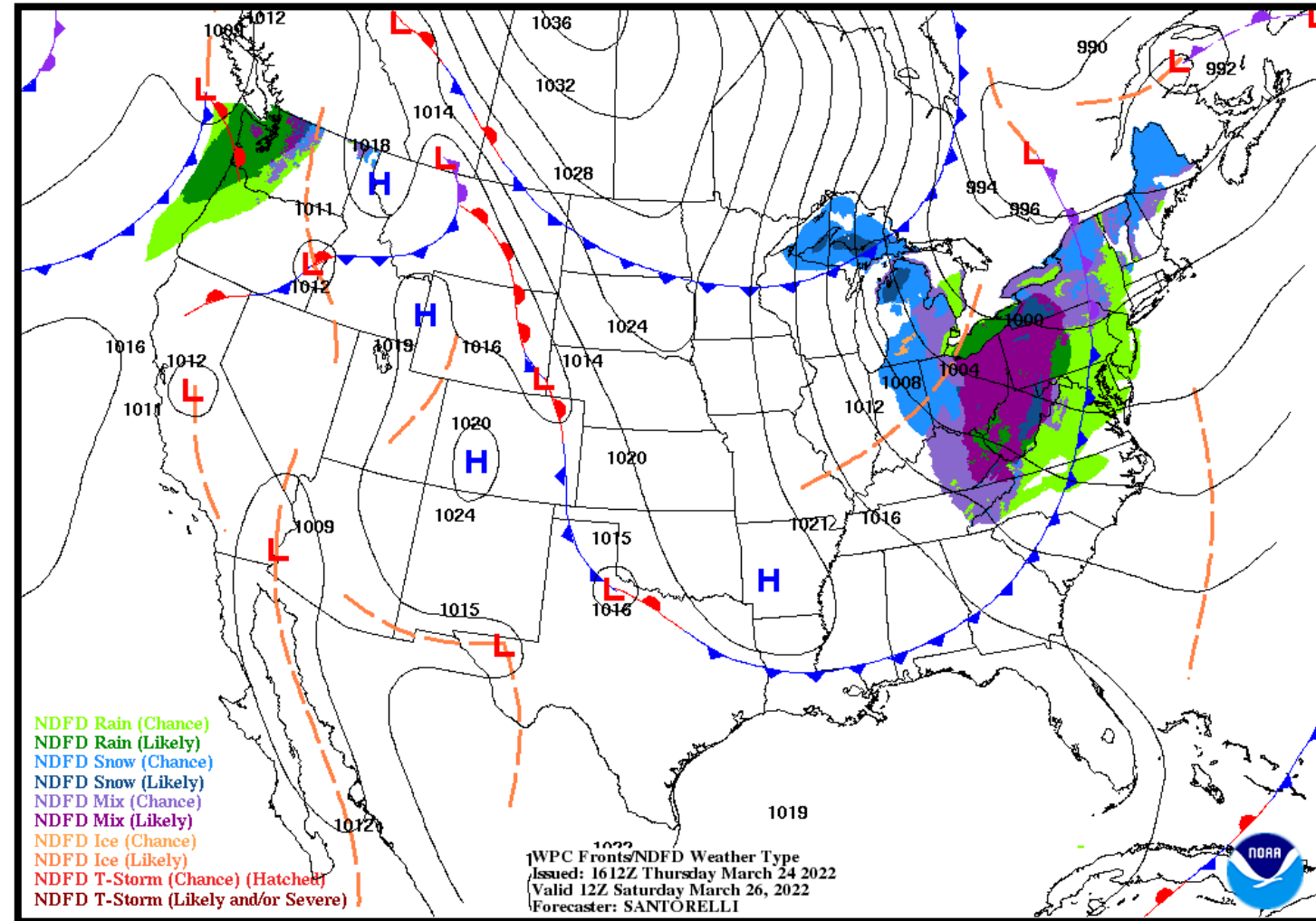
Low Temperature	41-46 F
High Temperature	72-78 F
Wind	NW 5-10 mph
Rain Chances	<10%
Weather Hazards	N/A





### NWS LCH REGIONAL WEATHER

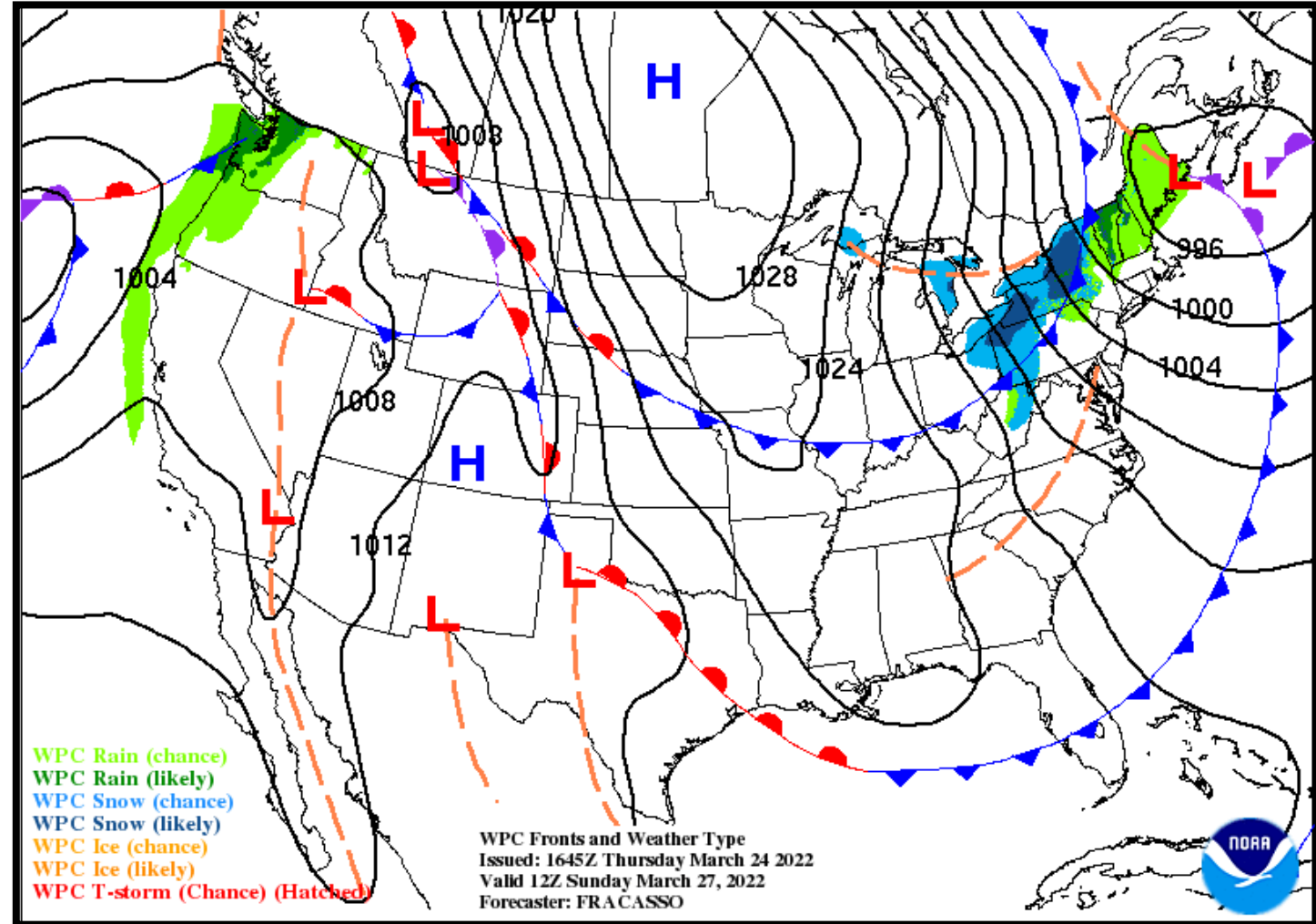
Low Temperature	46-51 F
High Temperature	75-79 F
Wind	VRB 5-10 mph
Rain Chances	<10%
Weather Hazards	N/A





### NWS LCH REGIONAL WEATHER

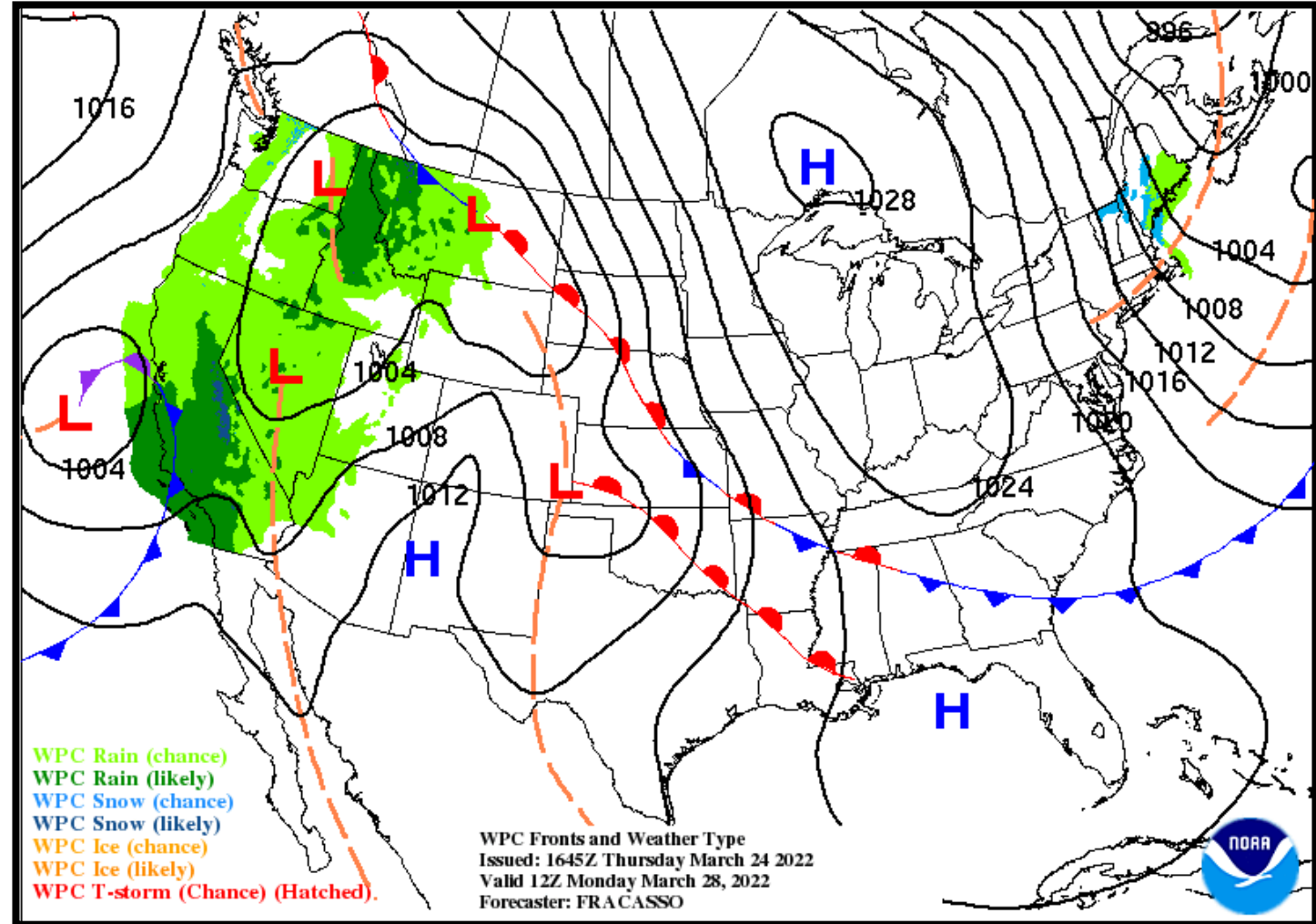
Low Temperature	47-54 F
High Temperature	78-81 F
Wind	S 10-15 mph
Rain Chances	<10%
Weather Hazards	N/A





### NWS LCH REGIONAL WEATHER

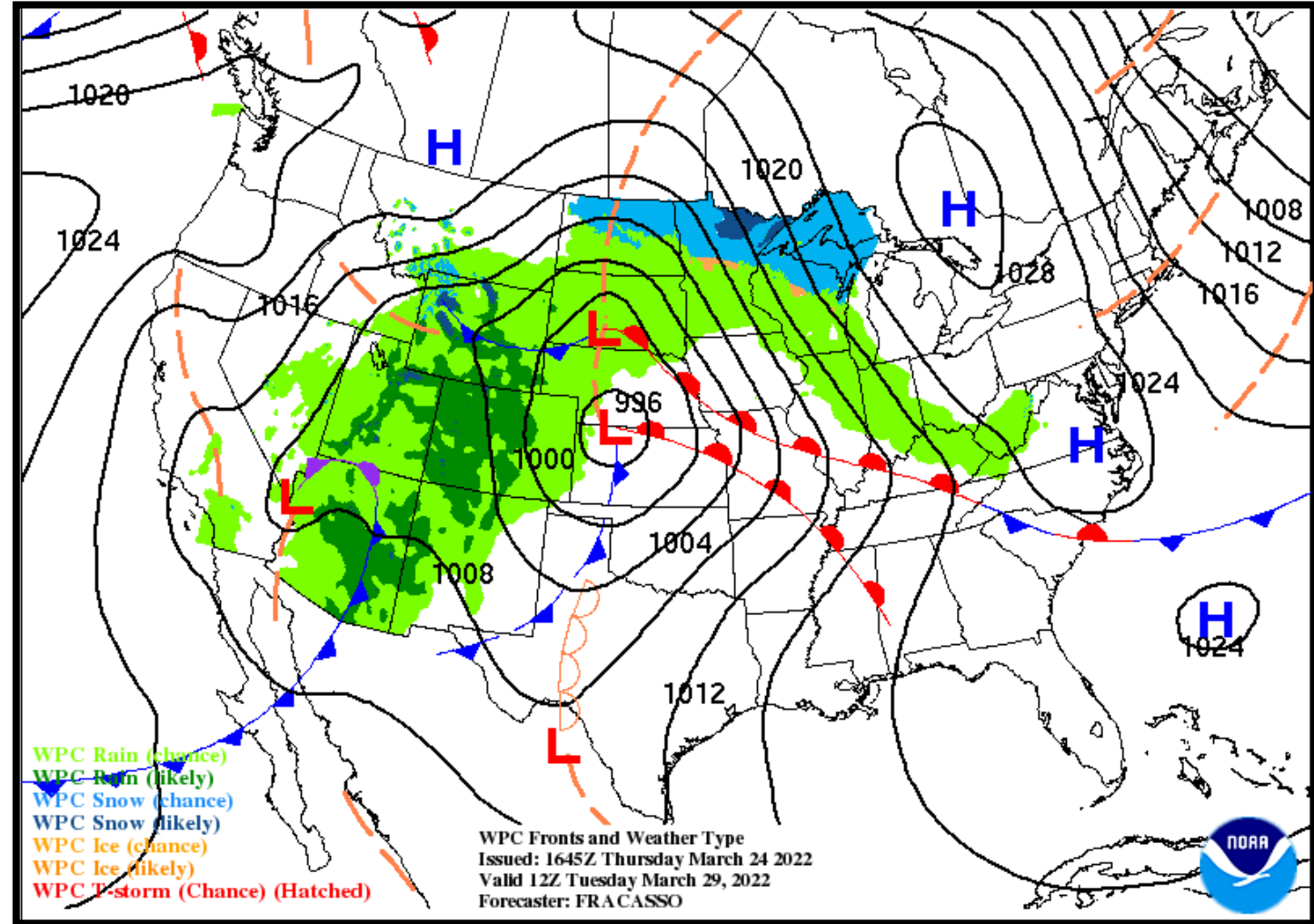
Low Temperature	54-60 F
High Temperature	79-84 F
Wind	S 10-20 mph Gusts 20-30 mph
Rain Chances	<10%
Weather Hazards	N/A





### NWS LCH REGIONAL WEATHER

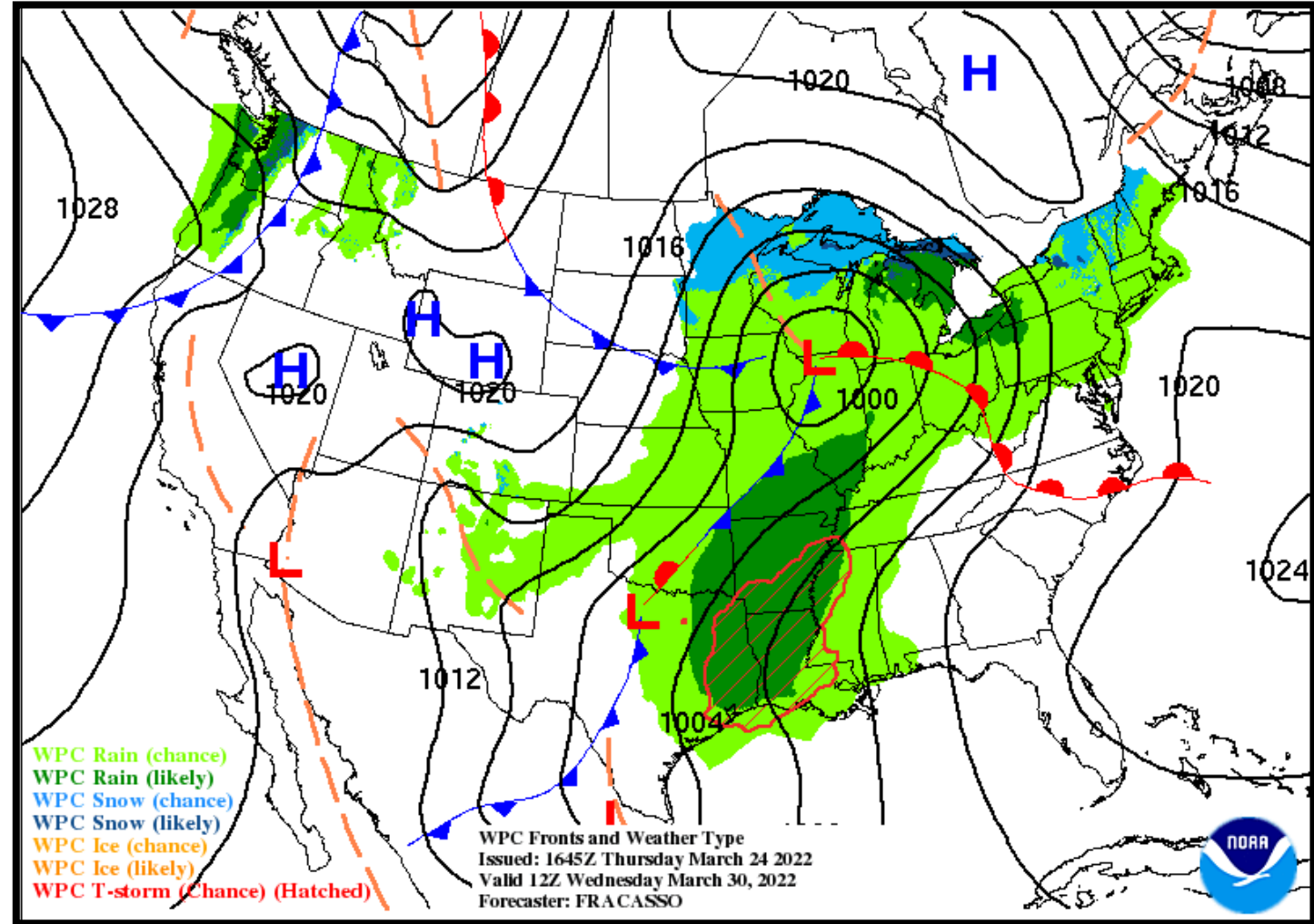
Low Temperature	60-63 F
High Temperature	81-84 F
Wind	S 15-20 mph Gusts 20-30 mph
Rain Chances	<10%
Weather Hazards	N/A





### NWS LCH REGIONAL WEATHER

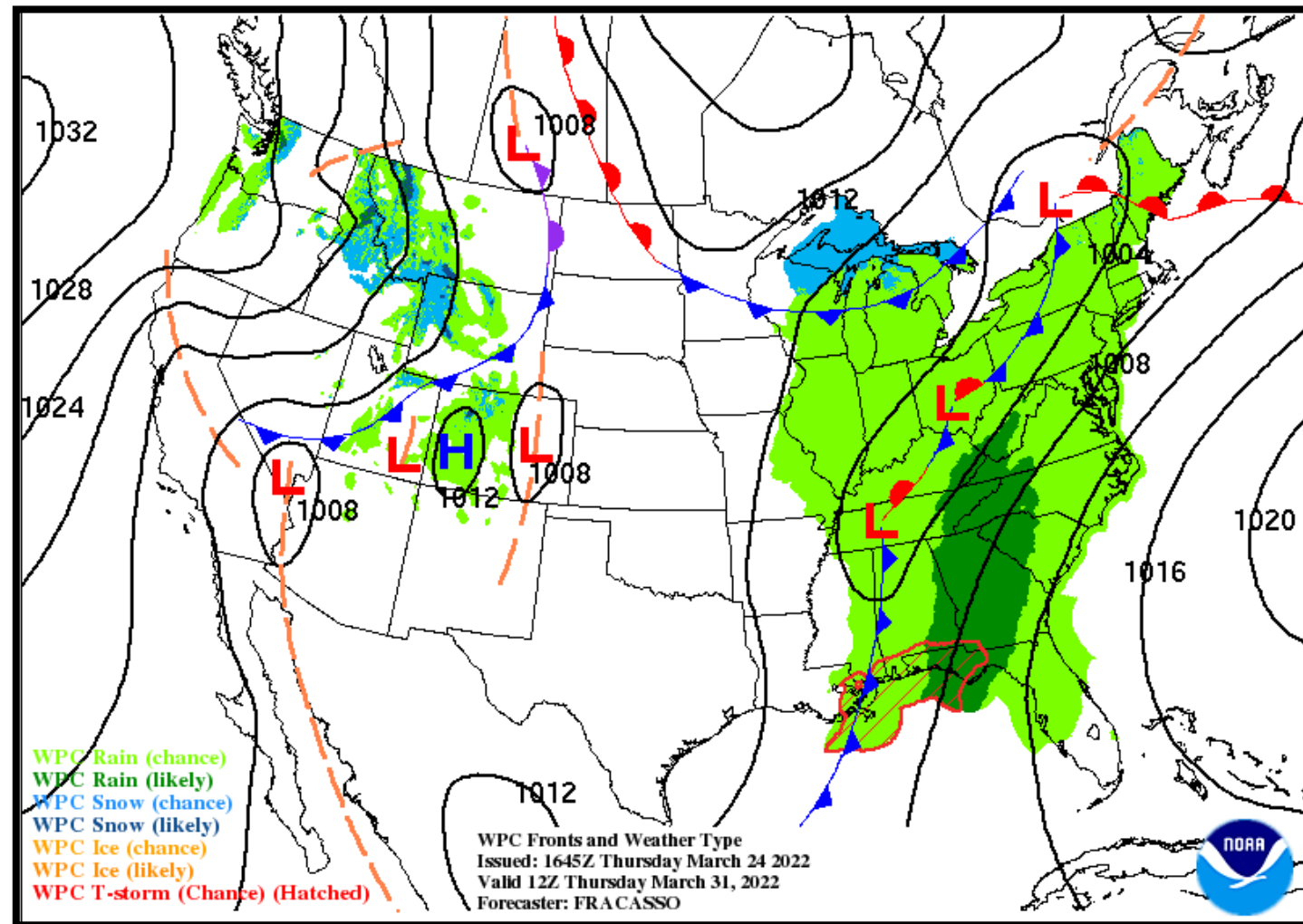
Low Temperature	61-64 F
High Temperature	76-82 F
Wind	S 15-20 mph Gusts 25-35 mph
Rain Chances	50-70%
Weather Hazards	Thunderstorms





### NWS LCH REGIONAL WEATHER

Low Temperature	52-59 F
High Temperature	73-79 F
Wind	WNW 10-15 mph
Rain Chances	15-25%
Weather Hazards	Thunderstorms





# Weekly Weather Summary Table



Lake Charles  
WEATHER FORECAST OFFICE

Color Codes Except for Temperatures	Weather	Friday 03/25/22	Saturday 03/26/22	Sunday 03/27/22	Monday 03/28/22	Tuesday 03/29/22	Wednesday 03/30/22	Thursday 03/31/22
Yellow = Low Threat	Rain Total	None	None	None	None	None	1.0-2.0"	None
Orange = Moderate Threat	T-Storm/Lightning						Fairly Widespread	
Red = High Threat	Tornado/Hail/Dmg Wind	None	None	None	None	None	None	None
	Wind	NW 5-10 mph	VRB 5-10 mph	S 10-15 mph	S 10-20 mph Gusts 20-30 mph	S 15-20 mph Gusts 20-30 mph	S 15-20 mph Gusts 25-35 mph	WNW 10-15 mph
	Tides	Above Normal	Near Normal	Near Normal	Near Normal	Above Normal	Above Normal	Above Normal
	Wave Height	Near: 1-4 ft Off: 4-5 ft	Near: 0-1 ft Off: 1-2 ft	Near: 1-2 ft Off: 2-3 ft	Near: 1-3 ft Off: 3-4 ft	Near: 1-5 ft Off: 6-7 ft	Near: 2-7 ft Off: 8-10 ft	Near: 2-7 ft Off: 8-10 ft
	Temperature	Low: 41-46 F High: 72-78 F	Low: 46-51 F High: 75-79 F	Low: 47-54 F High: 78-81 F	Low: 54-60 F High: 79-84 F	Low: 60-63 F High: 81-84 F	Low: 61-64 F High: 76-82 F	Low: 52-59 F High: 73-79 F
		Normal Low: 49-55 F Normal High: 73-75 F						

Color Codes For Temperatures
Yellow=5 F above normal
Orange=10 F above normal
Red=15 F above normal
Vry Lt Blue=5 F below normal
Lt Blue=10 F below normal
Blue=15 F below normal

