



# Weekly Weather Update

2:30 PM CDT  
Thursday, May 5, 2022

Stacey Denson, *NWS Lake Charles*





## TOP STORY:

**A frontal system to our north will bring a Slight Risk of severe weather this evening/tonight. Tomorrow through the rest of the period, we warm up significantly while rain chances fall to near 0.**

	Low Temperatures	High Temperatures	Chance For Rain
Friday	64-70 F	88-91 F	10-35%
Saturday	65-72 F	90-94 F	<10%
Sunday	69-73 F	90-94 F	<10%
Monday	70-75 F	90-95 F	<10%
Tuesday	71-75 F	90-94 F	<10%
Wednesday	70-72 F	91-95 F	<10%
Thursday	69-71 F	92-95 F	10-20%
Normals This Time of Year	60-64 F	82-84 F	25%-30%

# Severe Weather Outlook - Slight

Weather Forecast Office  
Lake Charles, LA  
Issued May 5, 2022 2:08 PM CDT

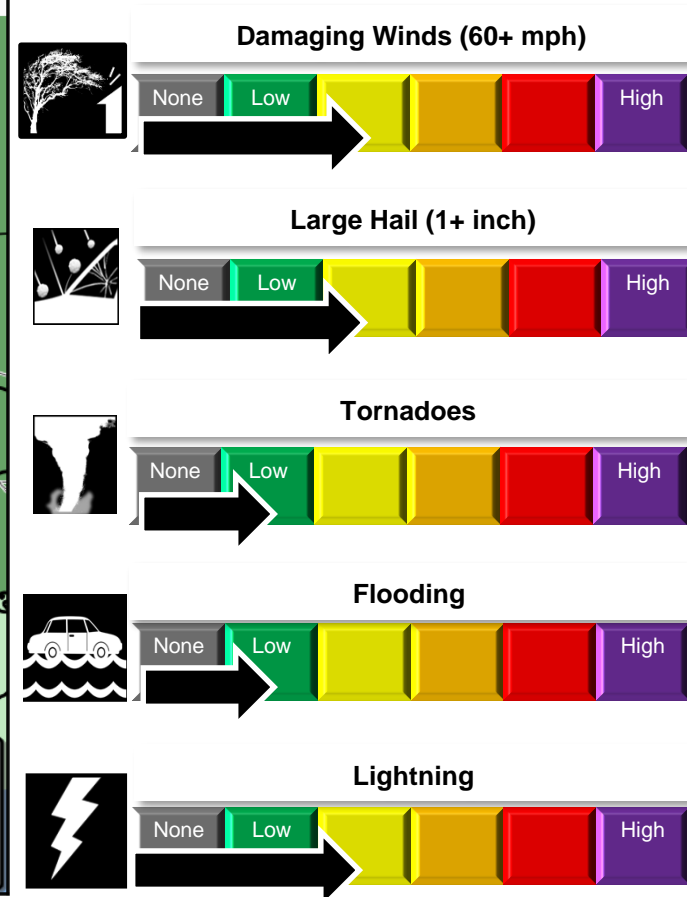
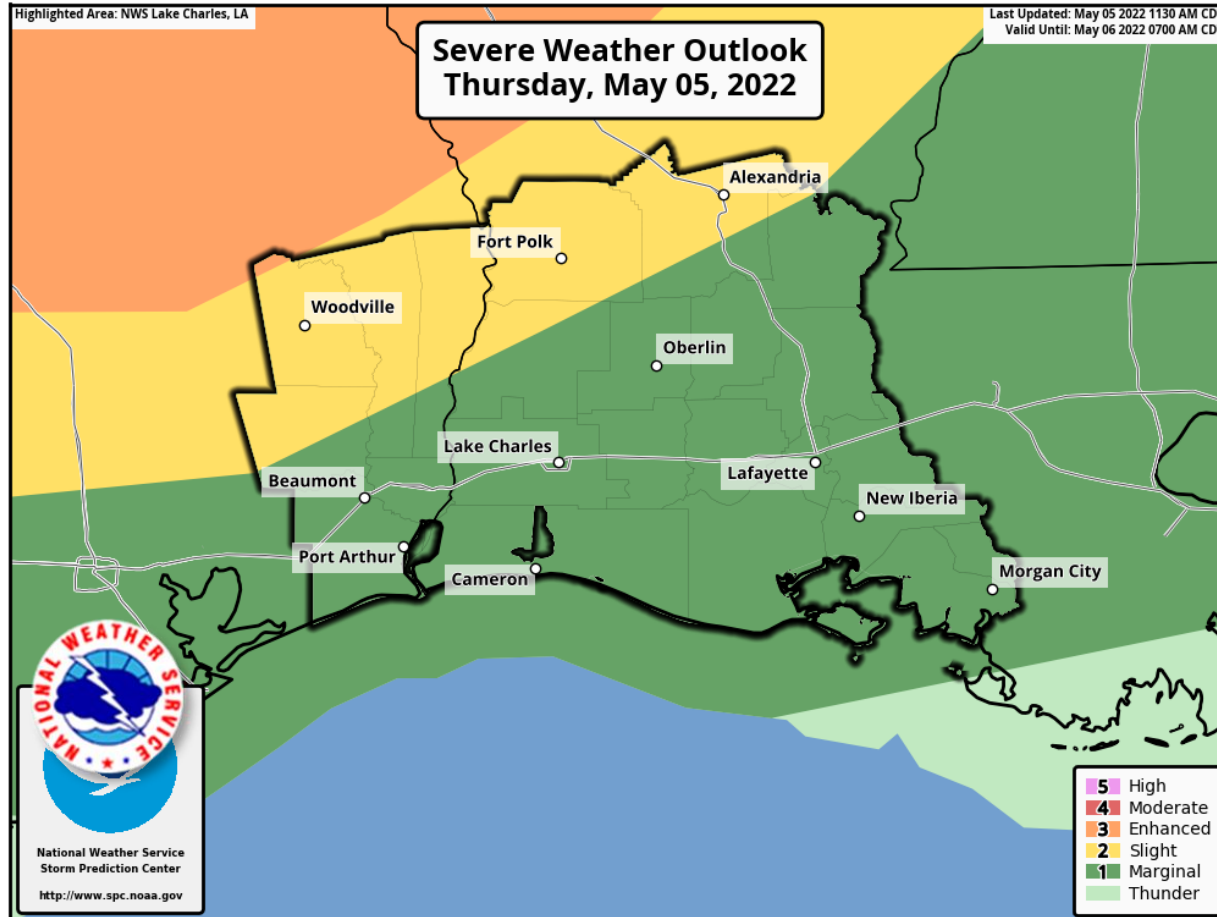


## Storm Prediction Center Day 1 Outlook

Potential Risk Level : 2 out of 5

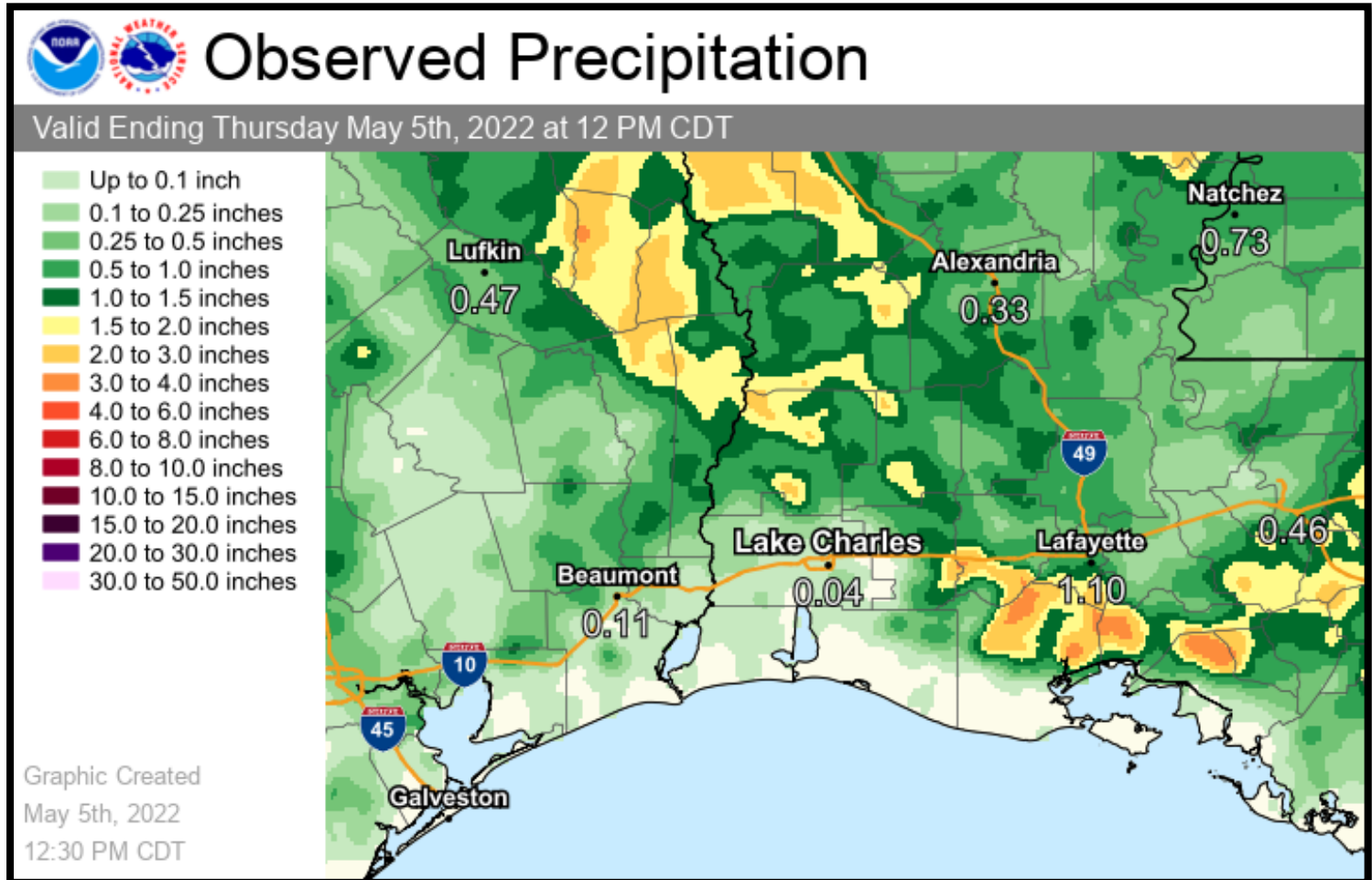
Timing : This evening and overnight

## Hazards



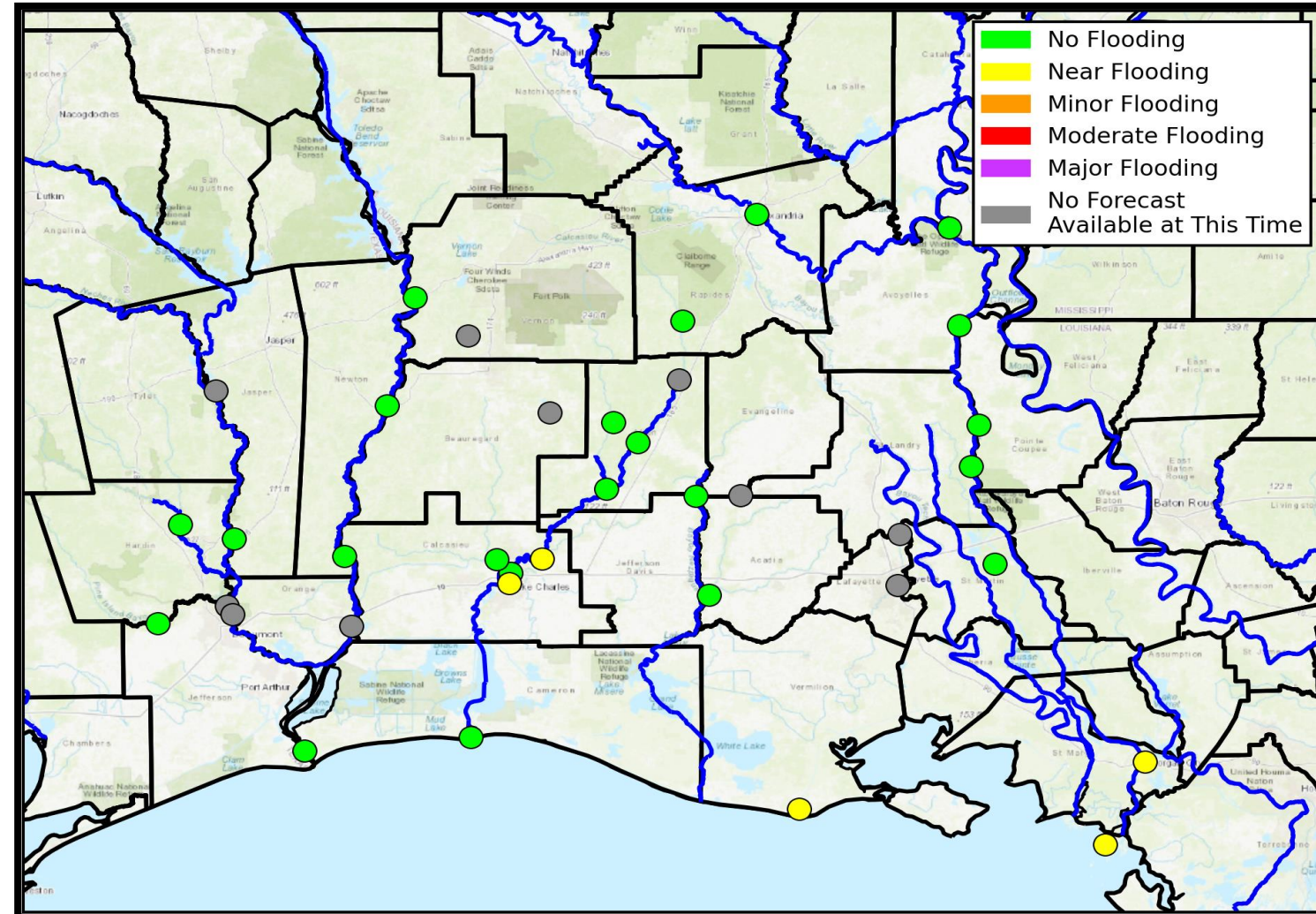


A nearby frontal boundary and upper level disturbance brought 1-3in of rain to parts of Acadiana last weekend. Elsewhere, less than an inch of rain fell at most locations.





Tides are running somewhat high along the coast due to increased southerly flow. A couple of points along the Calcasieu River near Lake Charles are also near flood, but flooding is not expected this week.

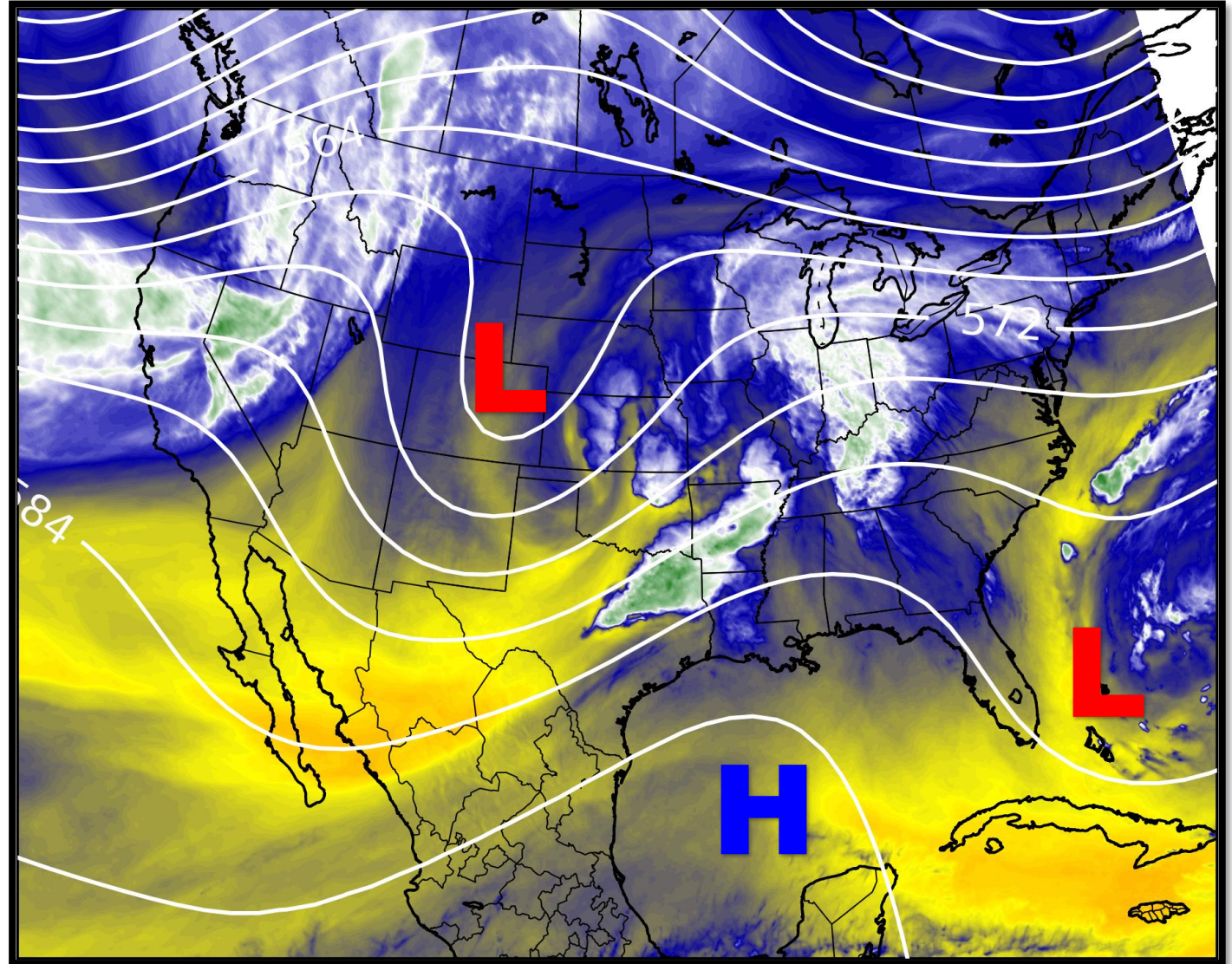


# Upper Level Steering Patterns



Lake Charles  
WEATHER FORECAST OFFICE

A deep upper level trough extends across the western half of the country from the upper Plains to the desert SW. High pressure is over the Gulf, and a shortwave trough is located in the Atlantic off the coast of FL.

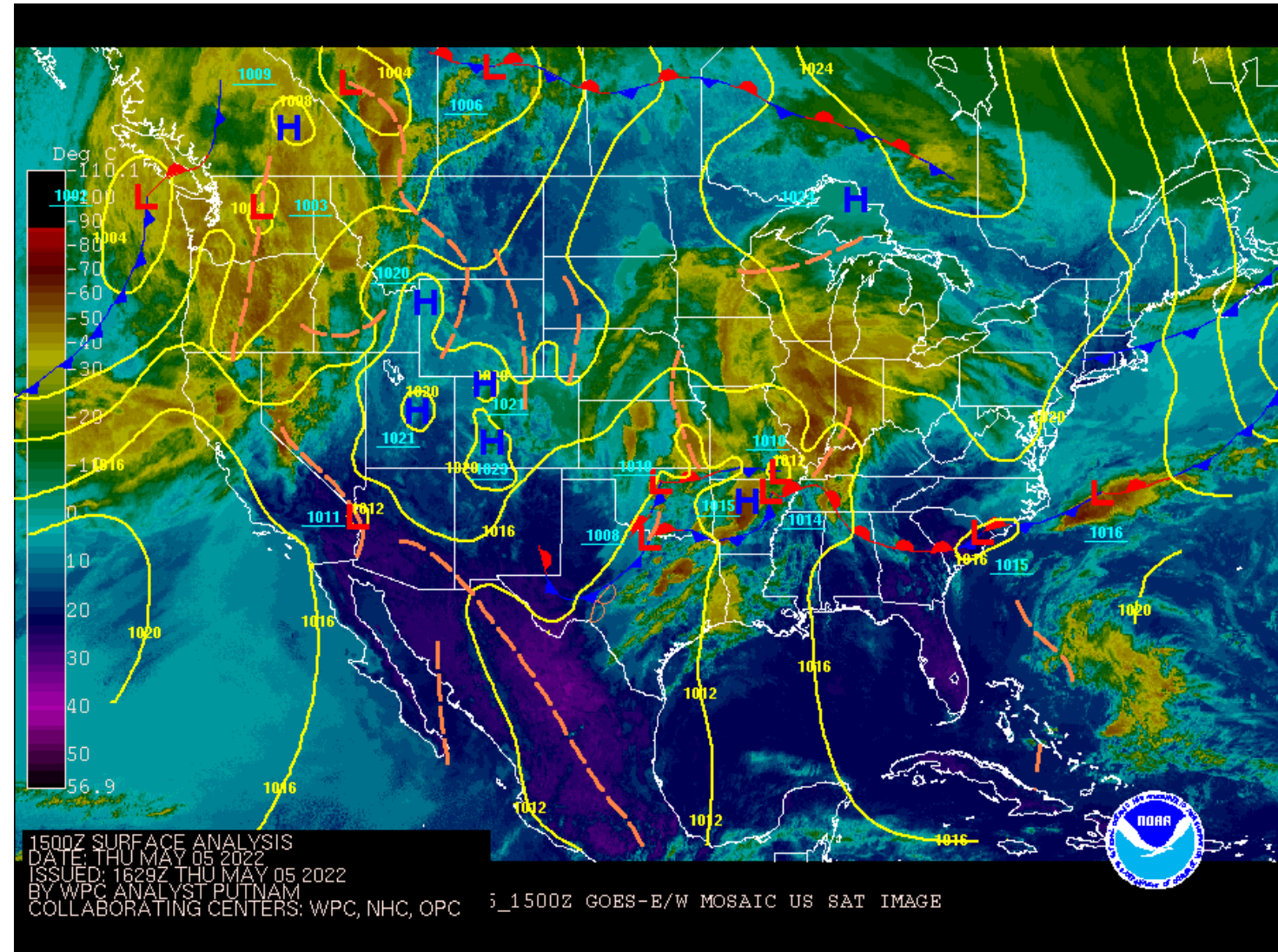


# Surface Weather Map with Fronts



Lake Charles  
WEATHER FORECAST OFFICE

A frontal system is located over the lower MS Valley, with a cold front near DFW and a warm front extending eastward across the southeastern US. Elsewhere, high pressure is in control.

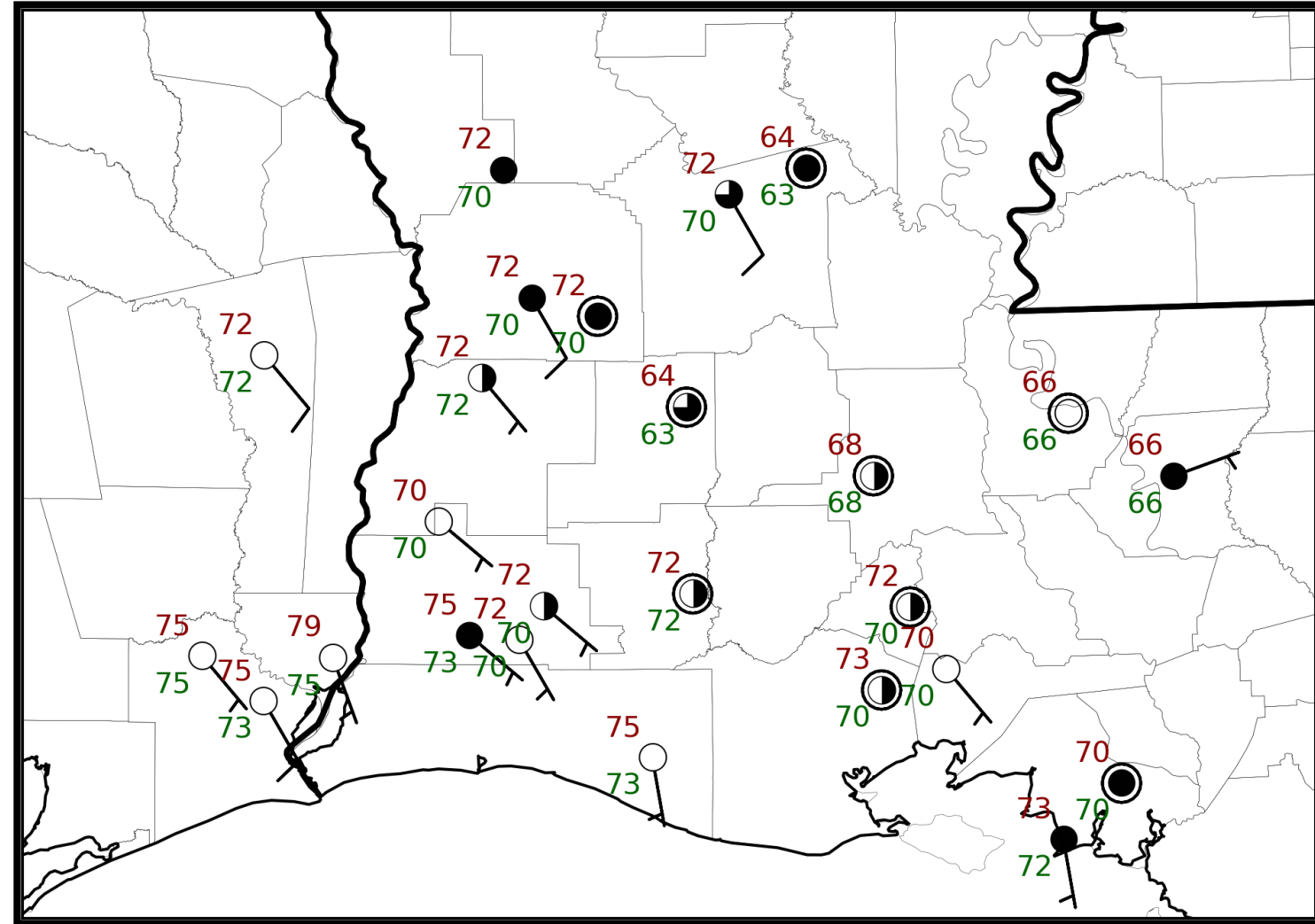


# 6 am Weather Observations



Lake Charles  
WEATHER FORECAST OFFICE

Temperatures were in the upper 60s to low 70s this morning, amid partly cloudy skies. Light southeasterly winds were ongoing as well.



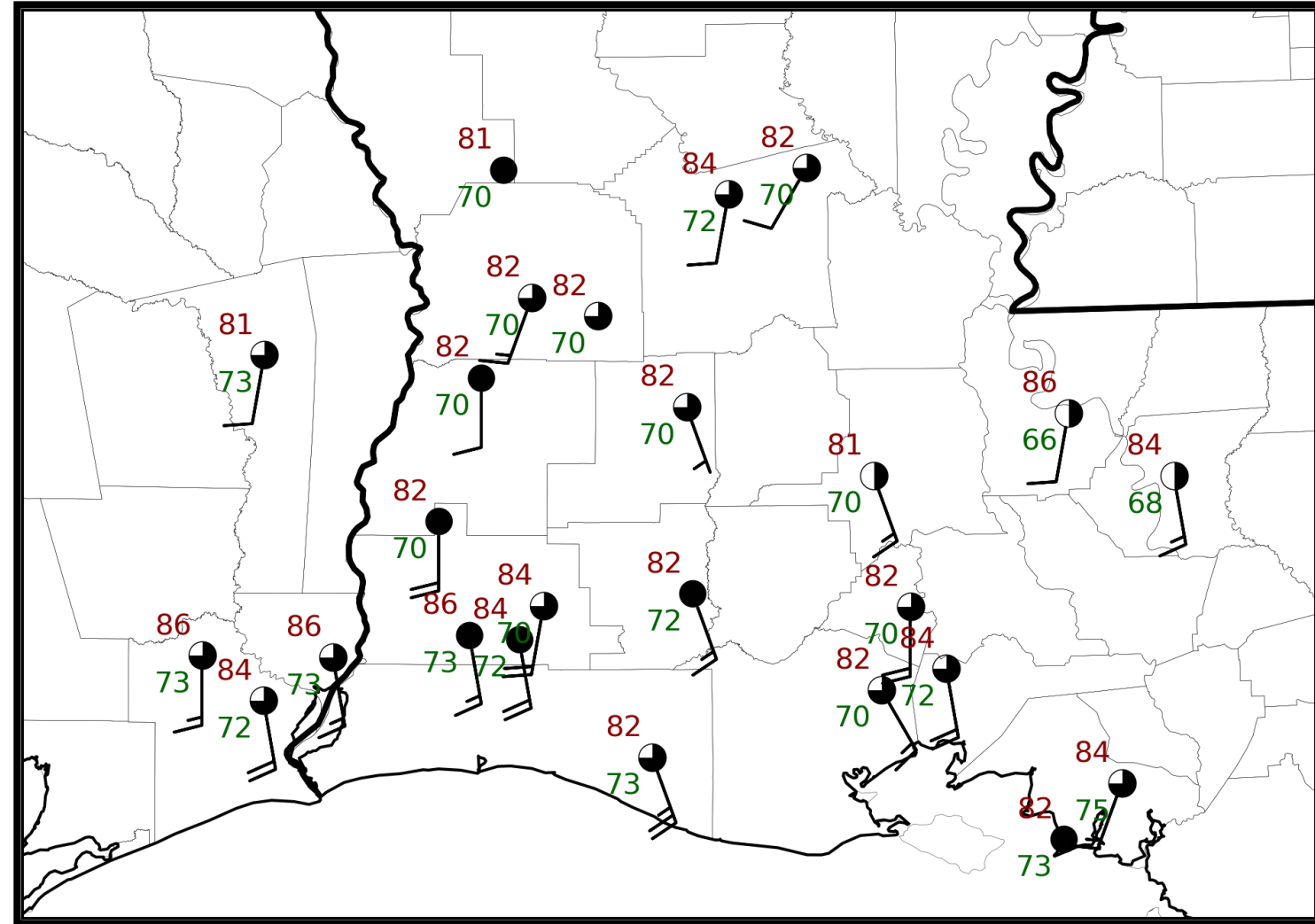


# 2 pm Weather Observations



Lake Charles  
WEATHER FORECAST OFFICE

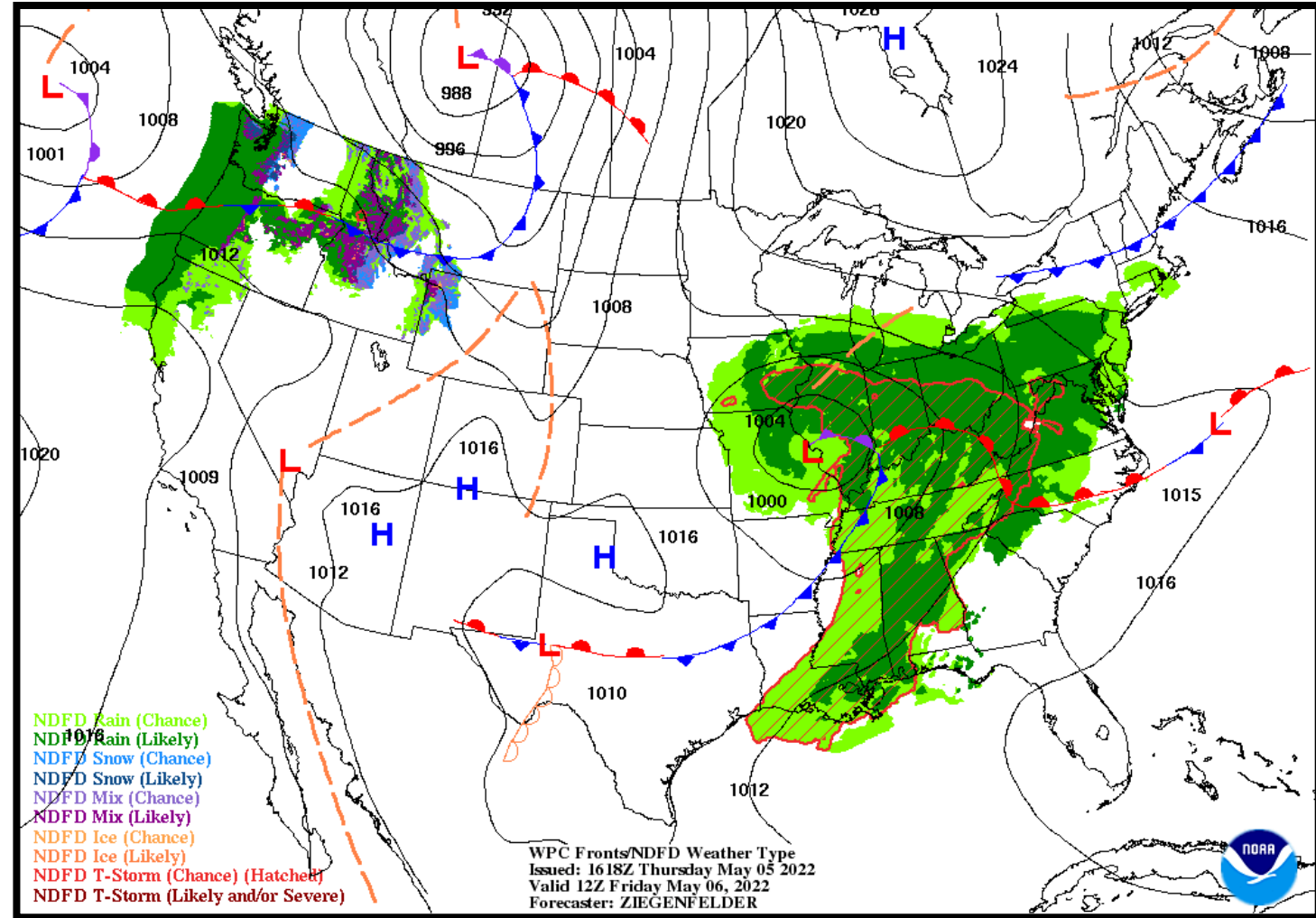
Temperatures have climbed into the low to mid 80s as of 2PM, while skies have become a bit more cloudy. Winds have increased significantly since this morning, with widespread gusts around 20-30mph ongoing.





### NWS LCH REGIONAL WEATHER

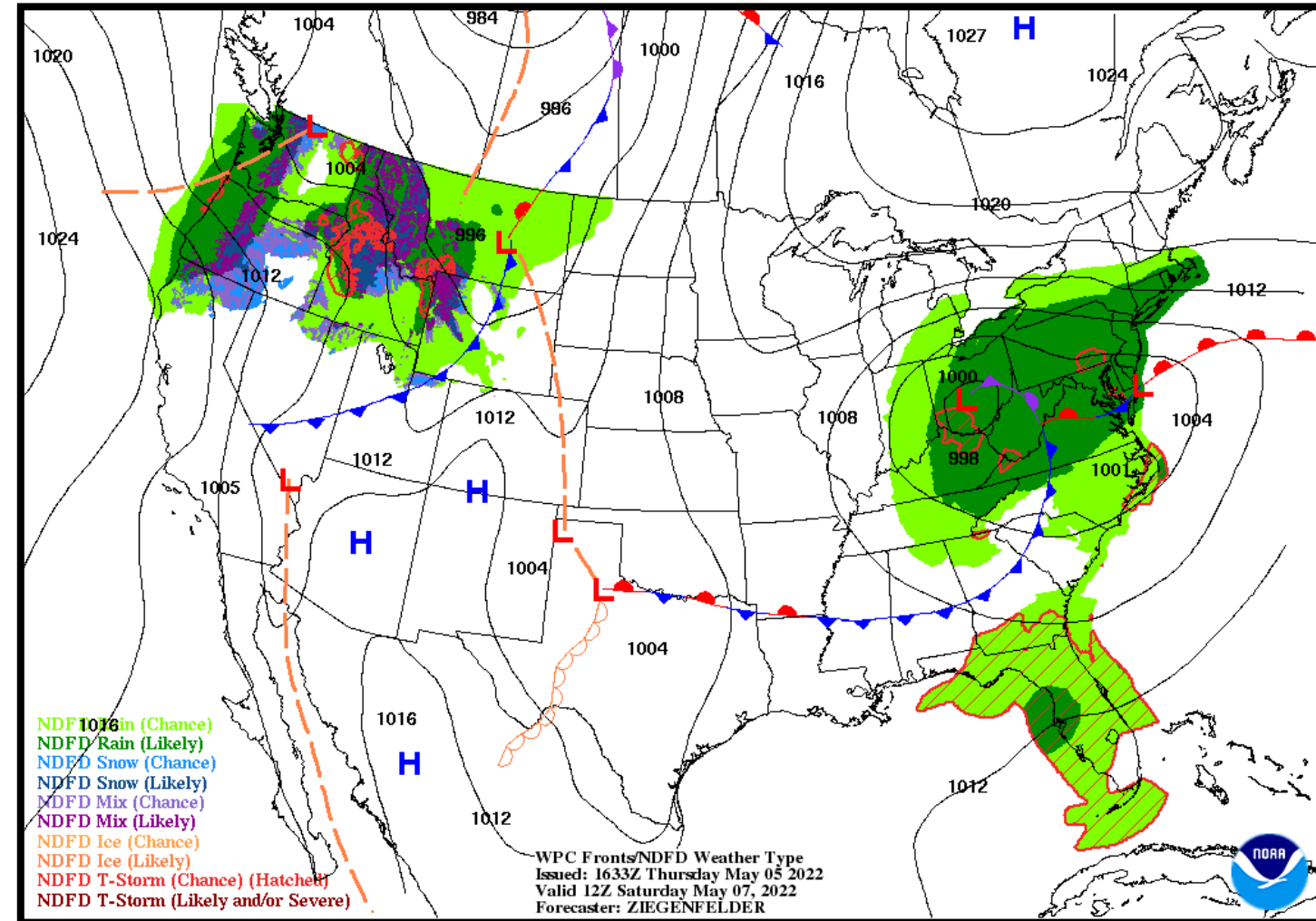
Low Temperature	64-70 F
High Temperature	88-91 F
Wind	W 5-10 mph
Rain Chances	10-35%
Weather Hazards	Thunderstorms





### NWS LCH REGIONAL WEATHER

Low Temperature	65-72 F
High Temperature	90-94 F
Wind	SSW 5-15 mph
Rain Chances	<10%
Weather Hazards	None



# Sunday, May 8, 2022

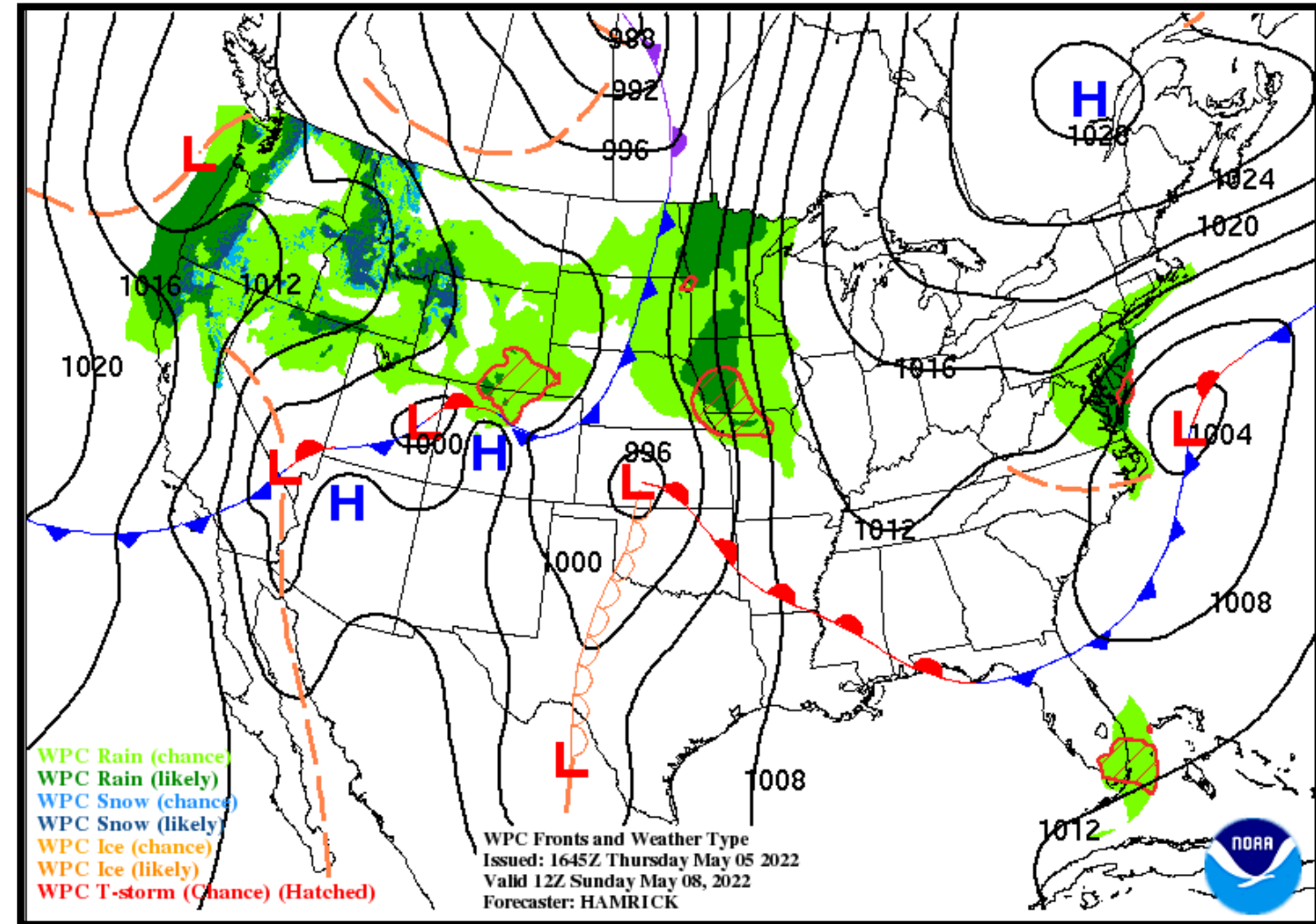


## Lake Charles

WEATHER FORECAST OFFICE

### NWS LCH REGIONAL WEATHER

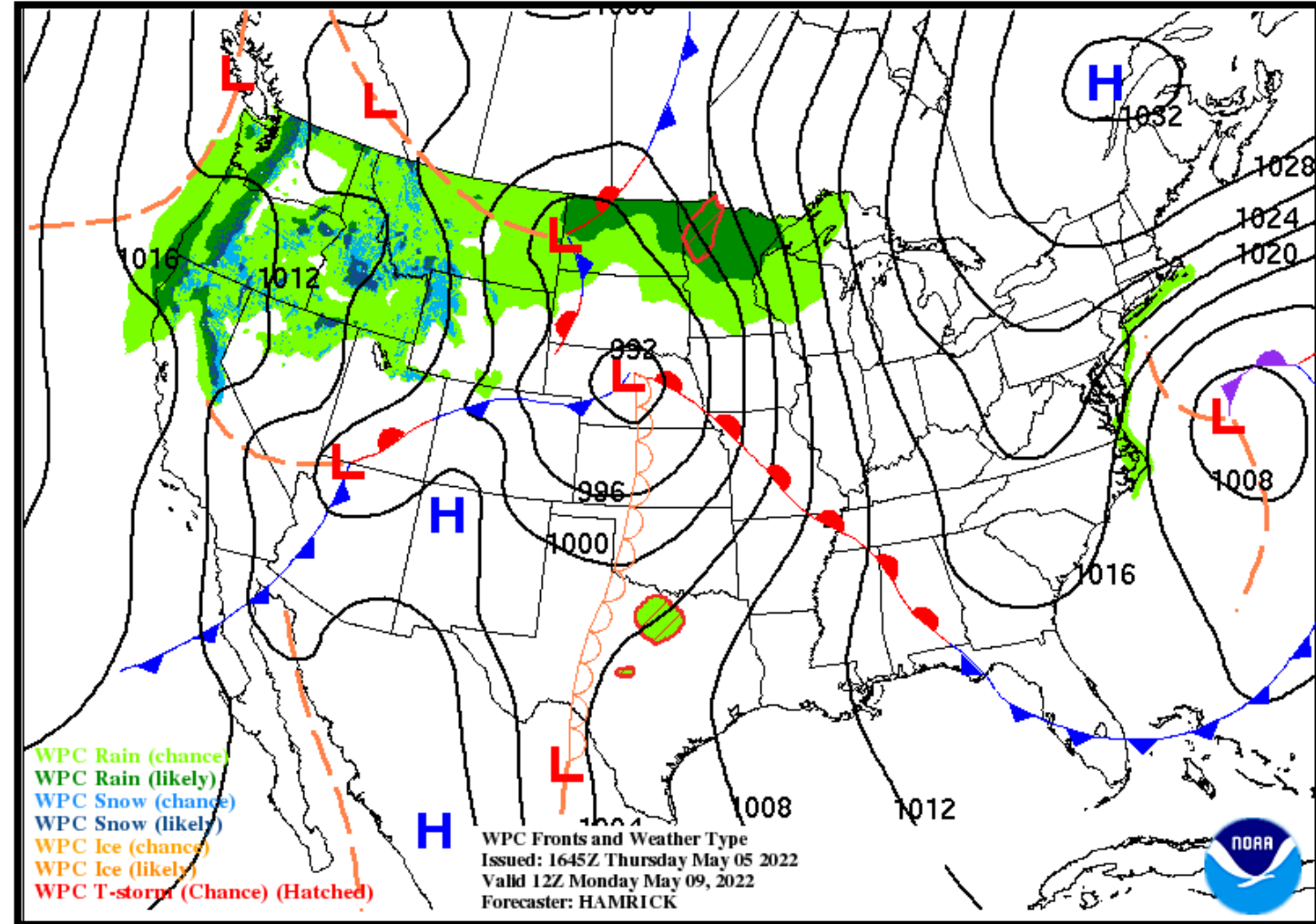
Low Temperature	69-73 F
High Temperature	90-94 F
Wind	S 10-15 mph
Rain Chances	<10%
Weather Hazards	None





### NWS LCH REGIONAL WEATHER

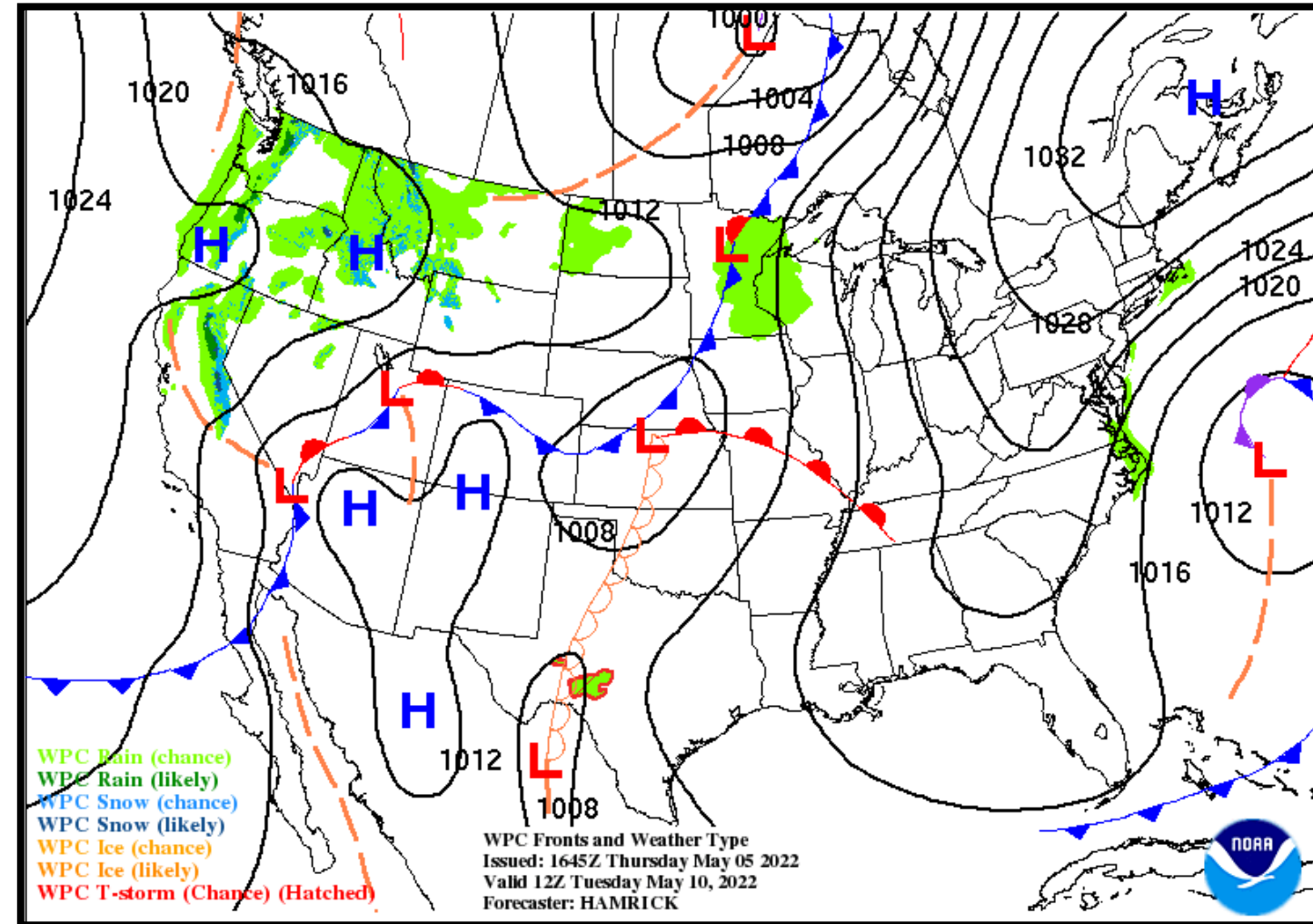
Low Temperature	70-75 F
High Temperature	90-95 F
Wind	S 10-15 mph
Rain Chances	<10%
Weather Hazards	None





### NWS LCH REGIONAL WEATHER

Low Temperature	71-75 F
High Temperature	90-94 F
Wind	SSE 10-15 mph
Rain Chances	<10%
Weather Hazards	None



# Wednesday, May 11, 2022

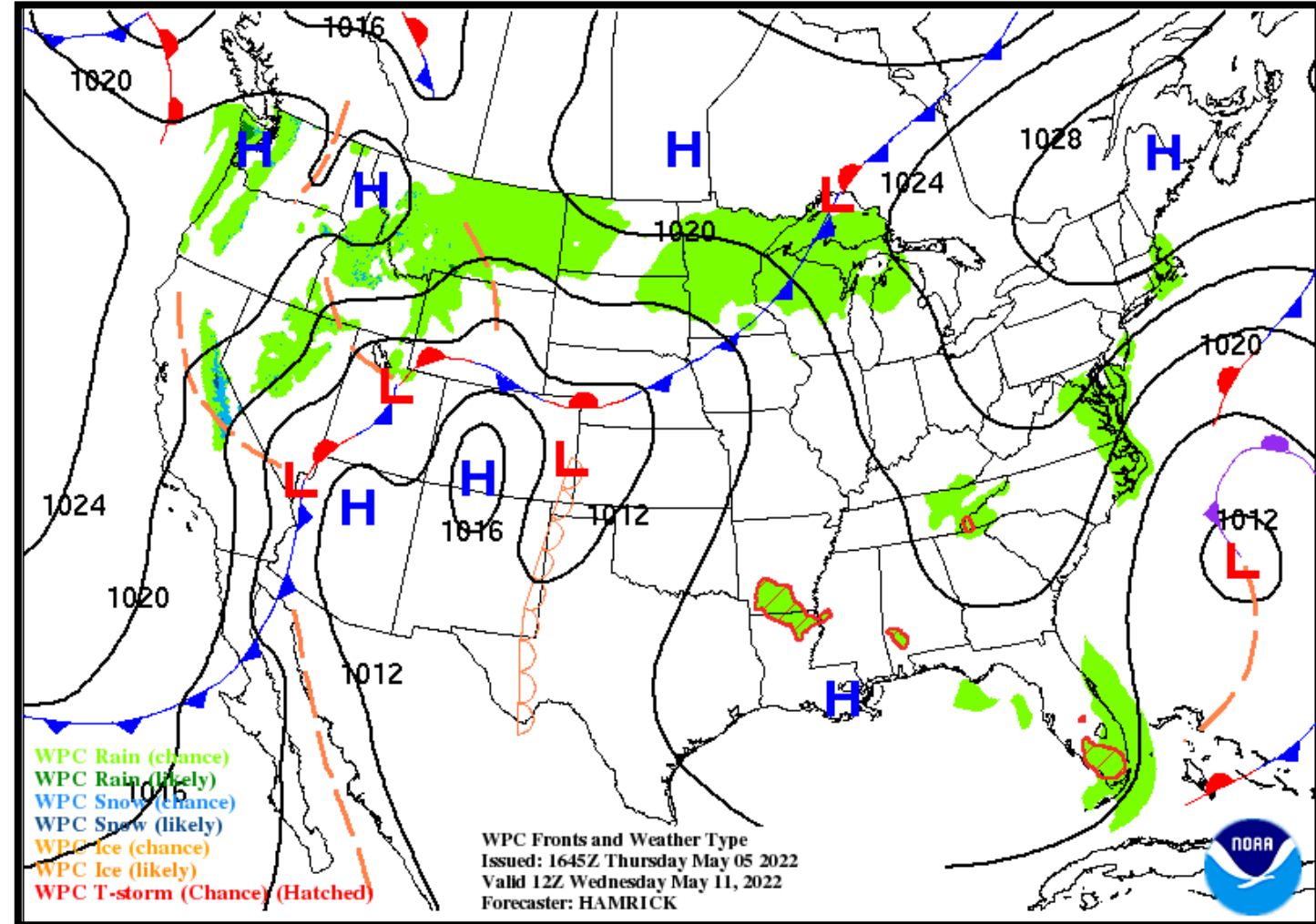


## Lake Charles

WEATHER FORECAST OFFICE

### NWS LCH REGIONAL WEATHER

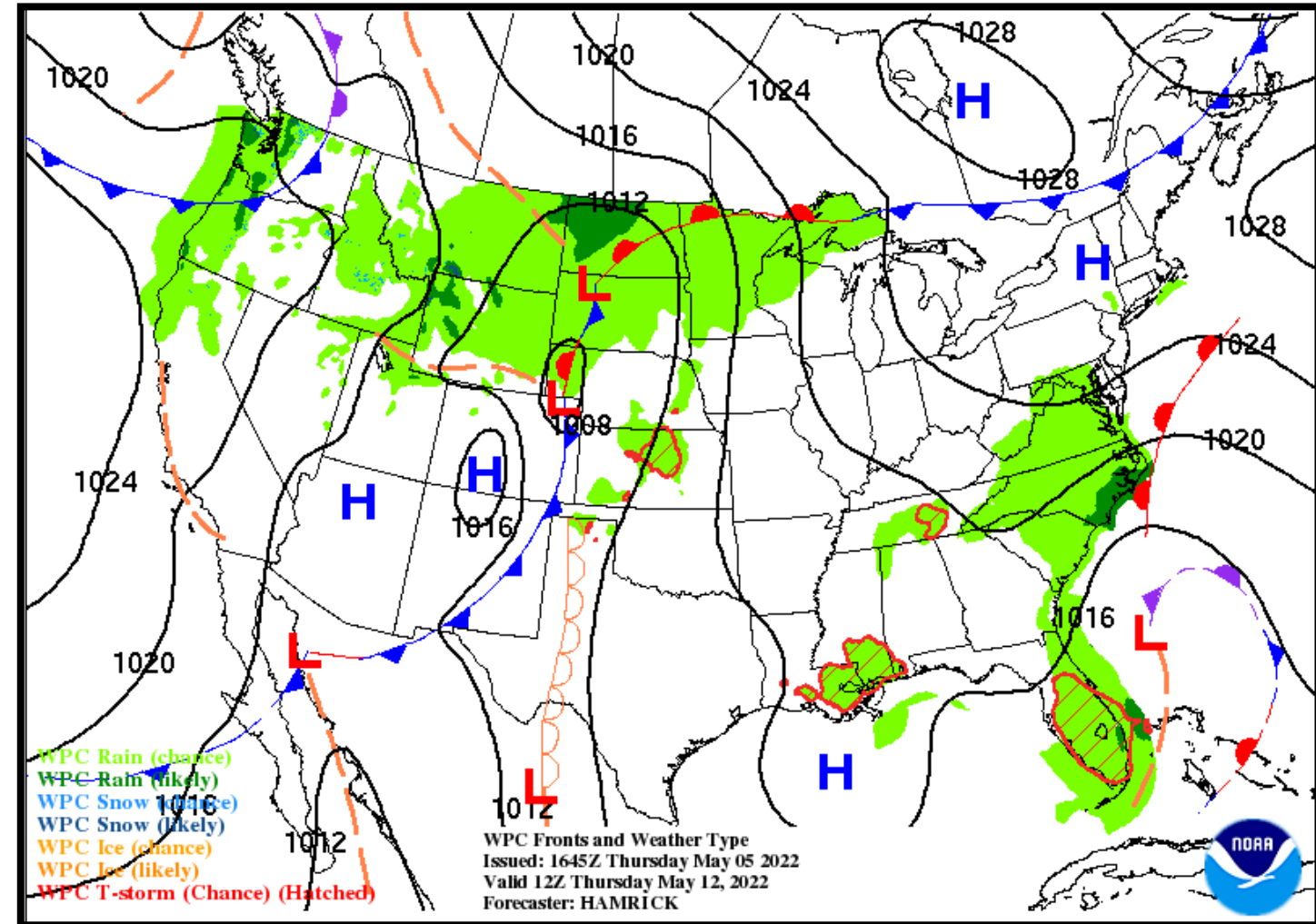
Low Temperature	70-72 F
High Temperature	91-95 F
Wind	S 5-10 mph
Rain Chances	<10%
Weather Hazards	None





### NWS LCH REGIONAL WEATHER

Low Temperature	69-71 F
High Temperature	92-95 F
Wind	W 5-10 mph
Rain Chances	10-20%
Weather Hazards	Showers





# Weekly Weather Summary Table



**Lake Charles**  
WEATHER FORECAST OFFICE

Color Codes Except for Temperatures	Weather	Friday 05/06/22	Saturday 05/07/22	Sunday 05/08/22	Monday 05/09/22	Tuesday 05/10/22	Wednesday 05/11/22	Thursday 05/12/22
Yellow = Low Threat	Rain Total	0.25-0.50"	None	None	None	None	None	0.25-0.50"
Orange = Moderate Threat	T-Storm/ Lightning							
Red = High Threat	Tornado/Hail/ Dmg Wind	Marginal	None	None	None	None	None	None
	Wind	W 5-10 mph	SSW 5-15 mph	S 10-15 mph	S 10-15 mph	SSE 10-15 mph	S 5-10 mph	W 5-10 mph
	Tides	Above Normal	Above Normal	Above Normal	Above Normal	Above Normal	Above Normal	Above Normal
	Wave Height	Near: 1-4 ft Off: 4-5 ft	Near: 1-3 ft Off: 3-4 ft	Near: 1-3 ft Off: 3-4 ft	Near: 1-4 ft Off: 4-5 ft	Near: 1-4 ft Off: 4-5 ft	Near: 1-4 ft Off: 4-5 ft	Near: 1-3 ft Off: 3-4 ft
	Temperature	Low: 64-70 F High: 88-91 F	Low: 65-72 F High: 90-94 F	Low: 69-73 F High: 90-94 F	Low: 70-75 F High: 90-95 F	Low: 71-75 F High: 90-94 F	Low: 70-72 F High: 91-95 F	Low: 69-71 F High: 92-95 F
Color Codes For Temperatures								
Yellow=5 F above normal								
Orange=10 F above normal								
Red=15 F above normal								
Vry Lt Blue=5 F below normal								
Lt Blue=10 F below normal								
Blue=15 F below normal								



- A Slight (2 of 5) risk of severe weather will be possible this evening for the northern counties/parishes. A Marginal (1 of 5) risk will be possible elsewhere. Damaging winds and hail will be the primary threats.
- An un-seasonable warming trend will begin tomorrow and continue through much of next week, with highs in the low to mid-90s expected.
- Some showers may linger tomorrow morning, otherwise dry weather is expected through the middle of next week.

